


FKP Architects

ARCHITECT OF RECORD

"Architect of Record signature line only: this drawing was not prepared under the direct supervision of the Architect of Record. The direct responsibility for preparation of this sheet lies with its corresponding professional stamp and signature. The signature of the Architect of Record in general responsible charge of the project is provided as required by Title 24, Part 1, Section 7-115 (a)." 

ARCHITECT - PAUL C. GLORIOD

CONSULTANT

 T.M.A.D. TAYLOR & GAINES

100 South Anaheim Boulevard, Suite 150
Anaheim, California 92805
Phone: 714.490.5555 Fax: 714.490.5560
Project No. 2305-163-07



REVISIONS

NO.	DATE	DESCRIPTION
1	02/05/2010	INFORMATION BULLETIN #5
2	05/28/2010	ASI #8

APPROVAL

PROJECT NAME

CHILDREN'S HOSPITAL
OF ORANGE COUNTY

455 S. Main St.
Orange, CA 92668-3874

TOWER II



PROJECT NUMBER

12011.00
Increment #7

OSHPD - PROJECT NUMBER

IL 072072-30

ISSUE

OSHPD PERMIT

DATE

01/27/2010

SCALE

1/4"=1'-0"

DRAWING TITLE

LOWER LEVEL MECHANICAL
PLAN AREA - A

DRAWING NUMBER

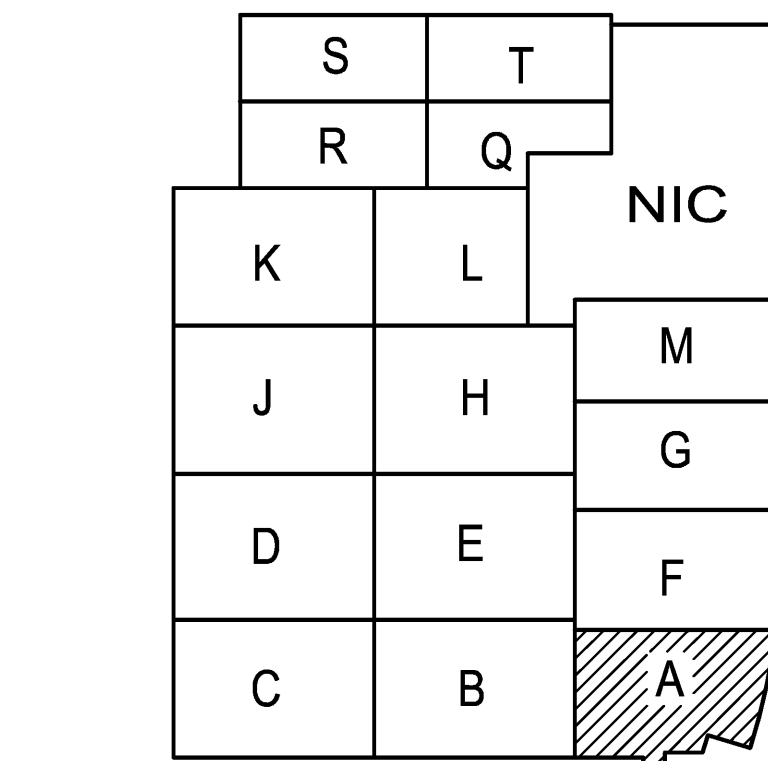
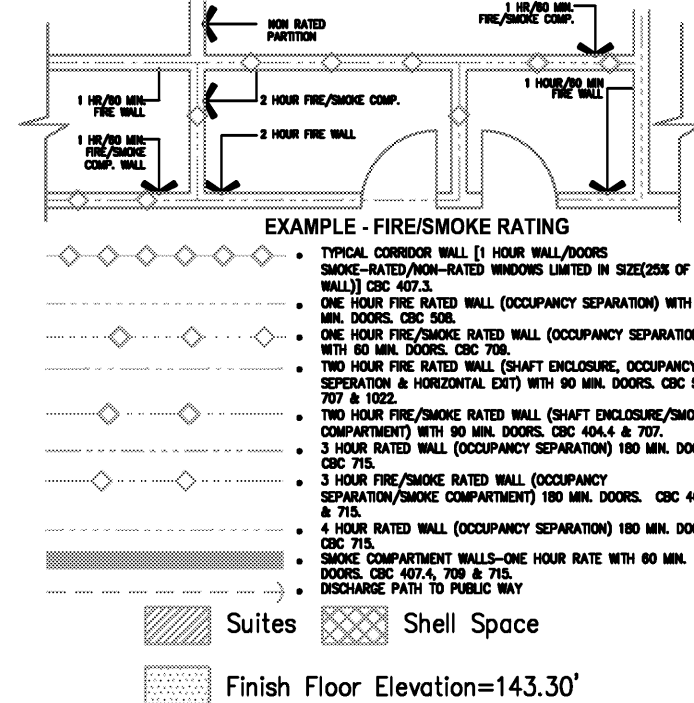
M3.0A

LOWER LEVEL MECHANICAL PLAN AREA - A

DESIGN KEY NOTES:

- 14" STAINLESS STEEL DUCT CONNECTED TO AUTOMATIC WASHER - EXHAUST 1000 CFM.
- STAINLESS STEEL METAL LINER ALL CEILING PLUS 2 FEET ON WALL ALL AROUND.
- 36x18 STAINLESS STEEL EXHAUST AIR GRILLE WITH 24x14 DUCT CONNECTION.
- 4" STAINLESS STEEL EXHAUST AIR DUCT CONNECTED TO DISINFECTED CLEANER.
- 20x20 STAINLESS STEEL EXHAUST AIR GRILLE WITH STAINLESS STEEL MANUAL DAMPER, RIGID STAINLESS STEEL 12" DUCT CONNECTION.
- 26"x3" STAINLESS STEEL CANOPY HOOD WITH (4) 24x12 OPENING FOR AIR TRANSFER.
- 14"x3" STAINLESS STEEL CANOPY HOOD WITH (2) EXHAUST STAINLESS STEEL GRILLE 24x16 FOR 1000 CFM.
- DDC CONTROL PANEL (PER CONTRACT & PROJECT REQUIREMENTS)
- THREE WAY CONTROL VALVE FOR HEAT COIL.
- MPS DRIP LEG STEAM TRAP CONNECT CONDENSATE RETURN TO SPARROW PIPE CONNECTION.
- MPR CONNECTED TO PUMPED PCR WITH SPARROW PIPE CONNECTION.
- 1" MPS WITH 3/4" MPR SERVING STERILIZER (TYP. FOR 2 & 2 FOR FUTURE UNITS)
- 1 1/2" MPS & 1" MPR SERVING AUTOMATIC WASHING MACHINE.
- 2 1/2" COPPER INSULATED CONDENSATE DRAIN TO FLOOR SINK.
- 1 1/2" COPPER INSULATED CONDENSATE DRAIN TO FLOOR SINK.
- 4" S.S. SECONDARY DRAIN PAN WITH 3/4" DRAIN LINE TO EXPOSE AREA TERMINATED @ 6" ABOVE FINISH FLOOR.
- PROVIDE 3 WAY CONTROL VALVE FOR CV BOX REHEAT COIL.
- OPPOSED BLADES MVD, HEAVY DUTY.
- CONNECT 14" S.S. WITH TRANSITION TO 10" TO AUTOMATIC CART WASH BLOWER.

- S.S. MOTORIZED DAMPER TO BE INTERLOCKED FOR OPERATION WITH CART WASH BLOWER.
- TRANSFERRING AIR TO CART WASH CEILING SPACE TO MAKE-UP AIR FOR CART WASH BLOWER.
- 14" UNDERGROUND EXHAUST AIR DUCT IN CONCRETE ENCASUREMENT WITH 4" STUB-OUT ABOVE FINISHED FLOOR (FOR AUTOPSY TABLE CONNECTION.)
- TWO 3-1/2"x14" S.S. EXHAUST AIR DUCT IN THE WALL DOWN TO UNDERGROUND AND CONNECT TO THE UNDERGROUND 4"x36" PLENUM. UNDERGROUND DUCT SHALL BE WRAPPED WITH MIN. TWO LAYER 10 MIL PROTECTION.
- 6" S.S. EXHAUST AIR DUCT CONNECTED TO THE VENTED CABINET.
- 4" S.S. EXHAUST AIR DUCT CONNECTED TO THE BACKSIDE OF THE LAB VENTED EQUIPMENT.
- PRESSURE MONITOR PANEL BETWEEN ANTE ROOM & AUTOPSY.
- PRESSURE MONITOR PANEL BETWEEN AUTOPSY ROOM AND BODY HOLDING.
- PRESSURE MONITOR PANEL BETWEEN MYCOLOGY AND MICROBIOLOGY.
- 1" MPS AND 3/4" MPR SERVING STEAM GUN.
- CSFD ACTUATOR TO BE LOCATED OUTSIDE OF ELECTRICAL ROOM.
- LPS(CS) & LPR(CS) SERVING THE NORTH ZONE OF PANCAKE 100' - 120 RUN BACK TO CRU.
- 2 HR FIRE RATED DUCTWRAP.
- 1" CHWS/R SERVING THE FCU-B11 W/ 3/4" CONDENSATE DRAIN TO THE HOUSE KEEPING SINK. PROVIDE SECONDARY DRAIN PAN AND SECONDARY CONDENSATE DRAIN TERMINATED @ CEILING LEVEL.
- 3" CHWS/R CONNECTED TO 6" CHWS/R W/ SHUT-OFF VALVES.
- 1" CHWS/R SERVING THE FCU-B10 W/ 3/4" CONDENSATE DRAIN TO TAILPIECE OF THE SINK WASTE LINE SINK IN TOILET STAFF FEMALE B.036.03. PROVIDE S.S. SECONDARY DRAIN PAN AND SECONDARY CONDENSATE DRAIN TERMINATED @ CEILING LEVEL.
- SEE INCREMENT 7 M3.5K FOR EXHAUST AIR FANS AND TERMINATION ON ROOF.
- 1" CHWS/R W/ CIRCUIT SETTER SERVING X-RAY IRRADIATOR.



A1 Key Plan
N.T.S.

DESIGN KEY NOTES

KEY PLAN

6

5

4

3

2

1