

50% DESIGN DEVELOPMENT SET	9/8/04
90% DESIGN DEVELOPMENT SET	9/24/04
100% DESIGN DEVELOPMENT SET	10/15/04
CIVIL PACKAGE, AFI	1/3/05
50% CONSTRUCTION DOCUMENTS	1/14/05
90% CONSTRUCTION DOCUMENTS	3/4/05
100% STRUCTURAL C.D.	4/12/05
100% CONSTRUCTION DOCUMENTS	4/15/05
100% CD, AFI	6/6/05

APPROVED FIRE AND PANIC ONLY
AUG 11 2005
STATE FIRE MARSHAL
SIERRA SOUTH

Director of Quality Assurance
UC Irvine Design & Construction Services
CJ Project Number: 4689.00

CAD File Name:
Drawn By: CJ
Reviewed By: CJ
Scale: 3/32"=1'-0"

Original drawing sheet is 30" x 42"
Scale Accordingly If Reduced

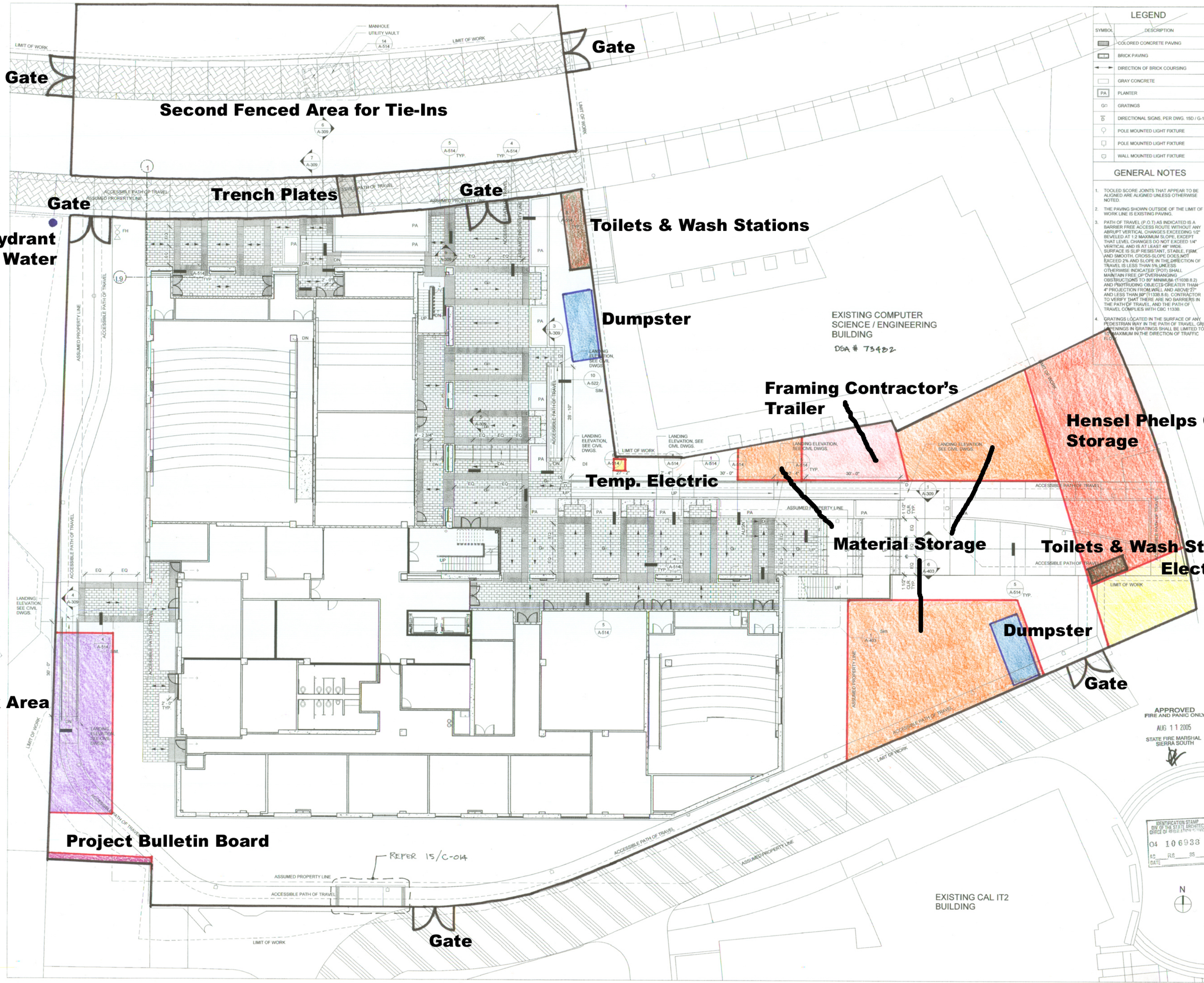
CONSTRUCTION DOCUMENTS

IDENTIFICATION STAMP
DIV OF THE STATE ARCHITECT
OFFICE OF REGISTRATION
04 106933
DATE

SITE PLAN

DRAWING NUMBER

A-100



LEGEND

SYMBOL	DESCRIPTION
[Pattern]	COLORLED CONCRETE PAVING
[Pattern]	BRICK PAVING
[Pattern]	DIRECTION OF BRICK COURSING
[Pattern]	GRAY CONCRETE
[Symbol]	PLANTER
[Symbol]	GRATINGS
[Symbol]	DIRECTIONAL SIGNS, PER DWG. 150 / G-106
[Symbol]	POLE MOUNTED LIGHT FIXTURE
[Symbol]	POLE MOUNTED LIGHT FIXTURE
[Symbol]	WALL MOUNTED LIGHT FIXTURE

GENERAL NOTES

- TOOLED SCORE JOINTS THAT APPEAR TO BE ALIGNED ARE ALIGNED UNLESS OTHERWISE NOTED.
- THE PAVING SHOWN OUTSIDE OF THE LIMIT OF WORK LINE IS EXISTING PAVING.
- PATH OF TRAVEL (P.O.T.) AS INDICATED IS A BARRIER FREE ACCESS ROUTE WITHOUT ANY ABRUPT VERTICAL CHANGES EXCEEDING 1/2" BEVELED AT 1:2 MAXIMUM SLOPE, EXCEPT THAT LEVEL CHANGES DO NOT EXCEED 1/4" VERTICAL AND IS AT LEAST 48" WIDE. SURFACE IS SLIP RESISTANT, STABLE, FIRM, AND SMOOTH. CROSS-SLOPE DOES NOT EXCEED 2% AND SLOPE IN THE DIRECTION OF TRAVEL IS LESS THAN 5% UNLESS OTHERWISE INDICATED (DOT) SHALL MAINTAIN FREE OF OVERHANGING OBSTRUCTIONS TO 8" MINIMUM (11038 B.2) AND PROTRUDING OBJECTS GREATER THAN 4" PROJECTION FROM WALL AND ABOVE 27" AND LESS THAN 8" (11338 B.6). CONTRACTOR TO VERIFY THAT THERE ARE NO BARRIERS IN THE PATH OF TRAVEL AND THE PATH OF TRAVEL COMPLETES WITH GRC 11338.
- GRATINGS LOCATED IN THE SURFACE OF ANY PEDESTRIAN WAY IN THE PATH OF TRAVEL, OR OPENINGS IN GRATINGS SHALL BE LIMITED TO 1/2" MAXIMUM IN THE DIRECTION OF TRAFFIC FLOW.