

Zone #3 Considerations:

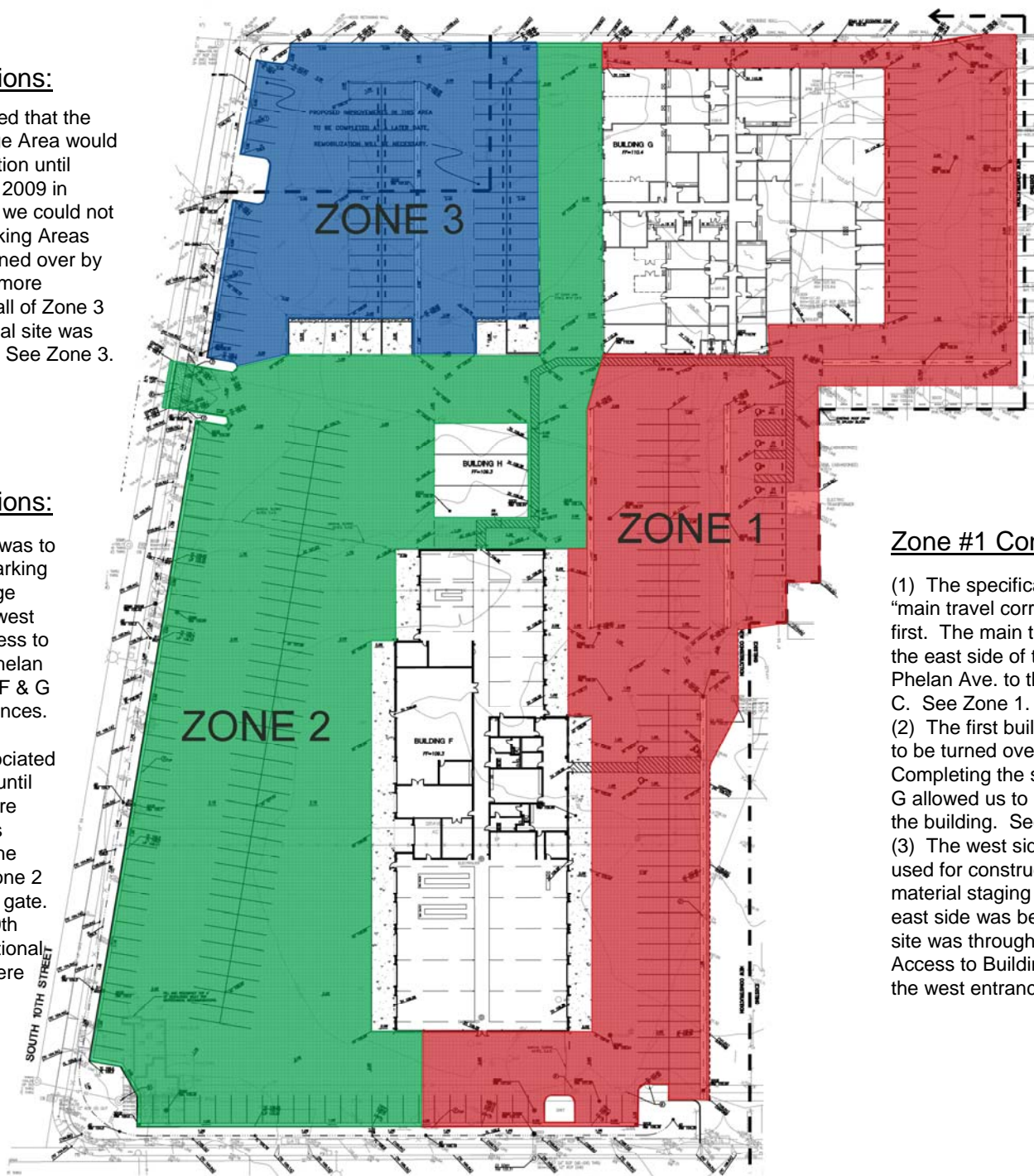
(7) The specifications stated that the Hazardous Material Storage Area would not be available for demolition until January 1, 2007 (March 2, 2009 in problem). This meant that we could not complete the Covered Parking Areas until after this area was turned over by the Owner. In order to be more efficient, we elected to do all of Zone 3 after the Hazardous Material site was turned over by the Owner. See Zone 3.

Zone #2 Considerations:

(4) The asphalt in Zone 1 was to be used for construction parking and material staging/storage while the site work on the west side was being done. Access to the site was through the Phelan gate. Access to Buildings F & G was through the east entrances. See Zone 2.

(5) Building H and its associated sitework was not required until after Buildings G and F were complete. However, it was required for us to include the Building H sitework with Zone 2 due to the new 10th Street gate.

(6) The entry gate from 10th Street needed to be operational when Buildings F and G were occupied. See Zone 2.



Zone #1 Considerations:

(1) The specifications require that the "main travel corridors" be turned over first. The main travel corridor runs thru the east side of the site from the gate on Phelan Ave. to the north side of Building C. See Zone 1.

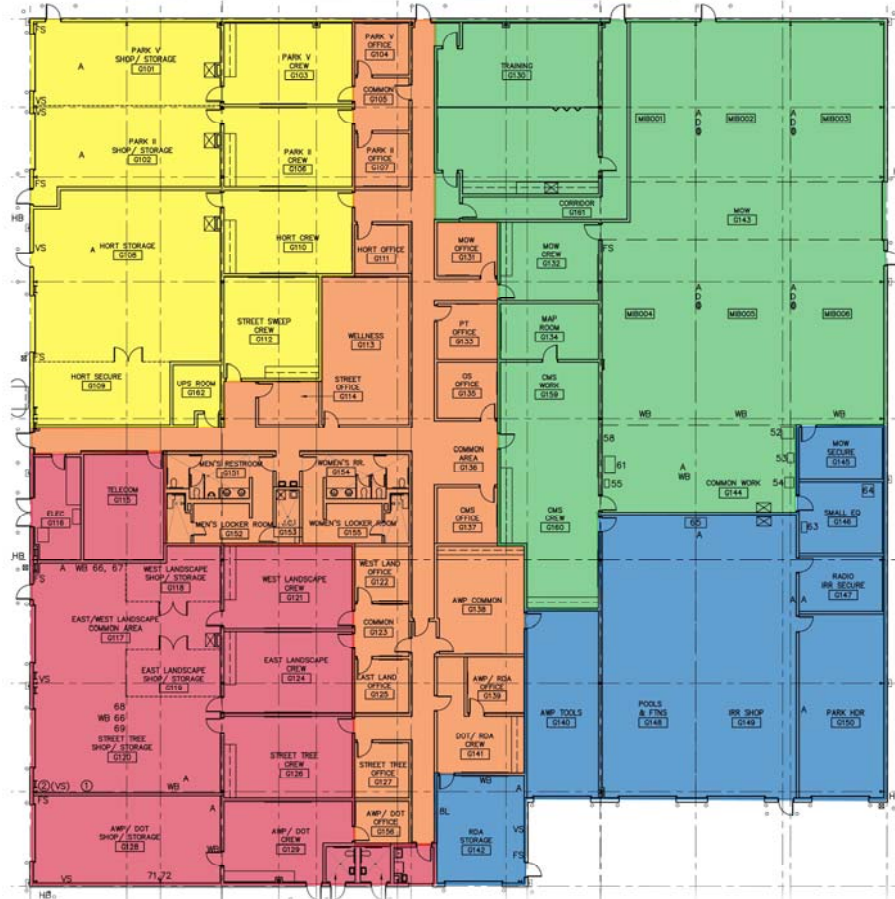
(2) The first building that was specified to be turned over was Building G. Completing the sitework around Building G allowed us to provide stable access to the building. See Zone 1.

(3) The west side of Building F was to be used for construction parking and material staging while the sitework on the east side was being done. Access to the site was through the 10th Street gate. Access to Buildings F & G was through the west entrances. See Zone 1.

<u>ZONE #1</u>				
Activity	Start		Finish	
	Scheduled	Actual	Scheduled	Actual
Frame	10/20/2008		10/24/2008	
Rough-In	10/27/2008		10/31/2008	
Electrical				
Plumbing				
Drywall	11/3/2008		11/7/2008	
Tape / Finish	11/10/2008		11/21/2008	
Paint	11/24/2008		11/28/2008	

ZONE #5				
Activity	Start		Finish	
	Scheduled	Actual	Scheduled	Actual
Frame	11/17/2008		11/21/2008	
Rough-In	11/24/2008		11/28/2008	
Electrical				
Plumbing				
Drywall	12/1/2008		12/5/2008	
Tape / Finish	12/8/2008		12/19/2008	
Paint	12/22/2008		12/26/2008	

ZONE #4				
Activity	Start		Finish	
	Scheduled	Actual	Scheduled	Actual
Frame	11/10/2008		11/14/2008	
Rough-In	11/17/2008		11/21/2008	
Electrical				
Plumbing				
Drywall	11/24/2008		11/28/2008	
Tape / Finish	12/1/2008		12/12/2008	
Paint	12/15/2008		12/19/2008	



ZONE #2				
Activity	Start		Finish	
	Scheduled	Actual	Scheduled	Actual
Frame	10/27/2008		10/31/2008	
Rough-In	11/3/2008		11/7/2008	
Electrical Plumbing				
Drywall	11/10/2008		11/14/2008	
Tape / Finish	11/17/2008		11/28/2008	
Paint	12/1/2008		12/5/2008	

ZONE #3				
Activity	Start		Finish	
	Scheduled	Actual	Scheduled	Actual
Frame	11/3/2008		11/7/2008	
Rough-In	11/10/2008		11/14/2008	
Electrical				
Plumbing				
Drywall	11/17/2008		11/21/2008	
Tape / Finish	11/24/2008		12/5/2008	
Paint	12/8/2008		12/12/2008	