

3/17/2011 3:17:44 PM  
C:\SRM\200725 SRM DDA local.rvt

Warning: It is a violation of the law for any person, unless acting under the direction of a licensed architect, to alter an item in any way. If an item in this document is altered, the altering architect, if other than the architect of record, shall affix to the item his seal and the notation "altered by" followed by his signature and the date of such alteration, and the specific description of the alteration.

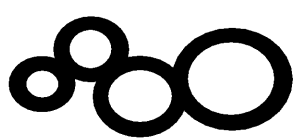
APPROVED  
FIRE AND PANIC ONLY

03-16-2011

STATE FIRE MARSHAL  
CONSTRUCTION SERVICES

COPYRIGHT © FENTRESS ARCHITECTS	
ISSUED FOR	DATE
BID PK #1 100 CD	10.06.08
50% PROGRESS	10.24.08
BID PK #1 80 CD	12.01.08
BID PK #1 100 CD	02.16.09
BID PK #2 100 CD	03.26.09
100% CD	05.08.09
CD-3	01.07.10
ASH-16-R1	03.16.11
ASH-16-R2	03.16.11

SANFORD CONSORTIUM FOR REGENERATIVE MEDICINE  
2880 TORREY PINES SCENIC DRIVE  
LA JOLLA, CALIFORNIA 92037



CONSULTANT

Larkford/Phelps Consortium LLC  
633 West 10th Street, Suite 100  
San Diego, CA 92101  
(619) 594-0000

FENTRESS ARCHITECTS

410 Broadway, Denver, CO 80202  
303.721.6800

DAVIS PERKINS  
2001 Fifth Avenue, San Diego, CA 92101

STAMP

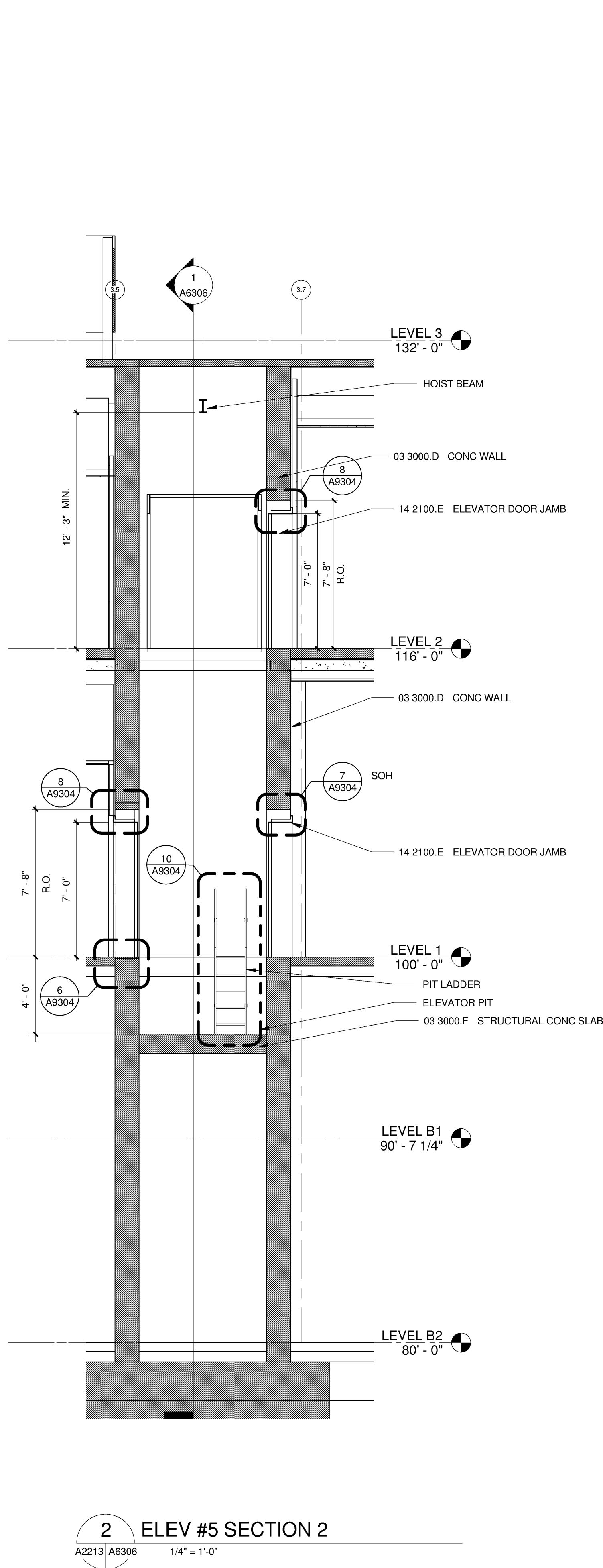
SHEET NAME  
ELEVATOR SECTIONS

DRAWN BY: Author

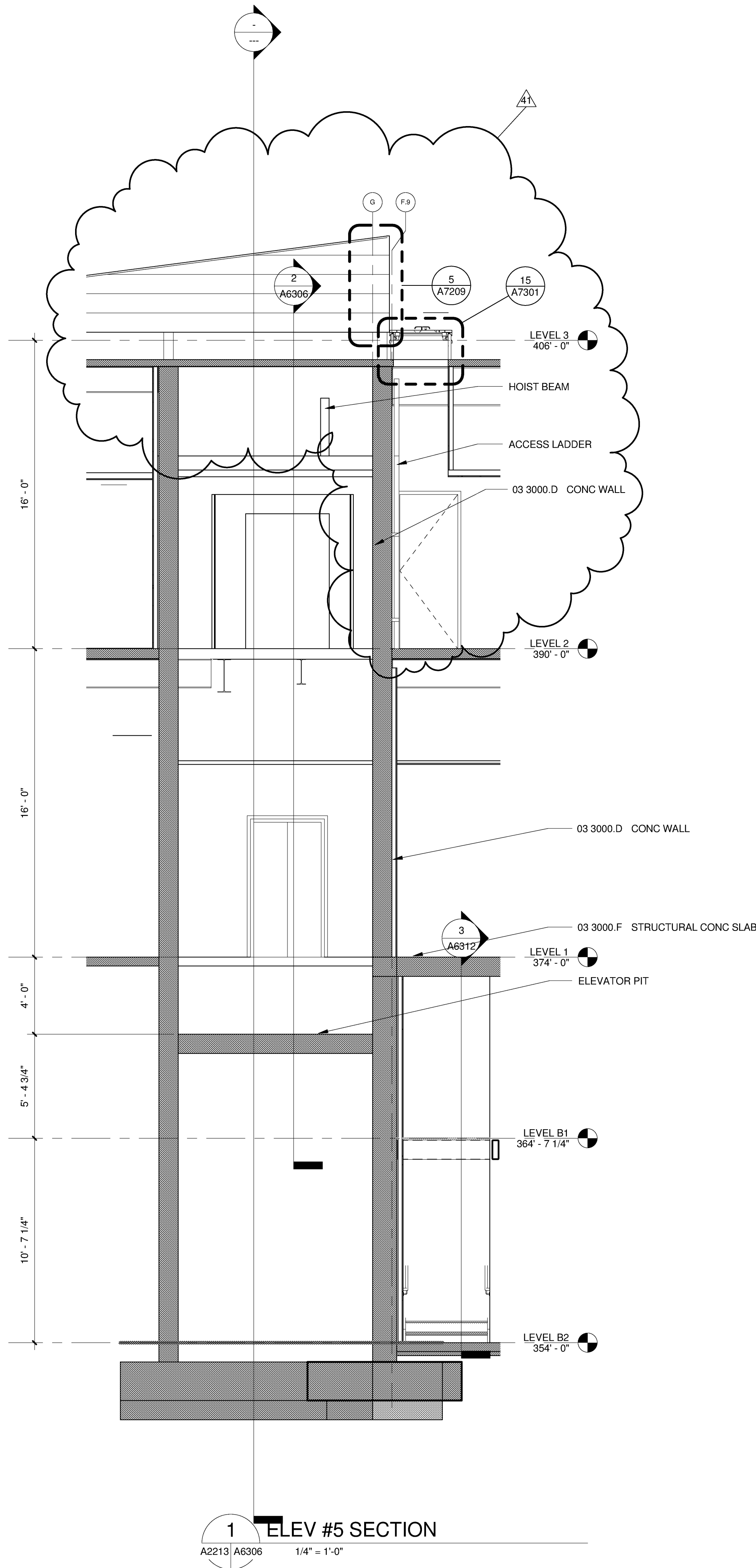
PROJECT # 200725.000

SHEET NUMBER

A6306



2 ELEV #5 SECTION 2  
A2213 A6306 1/4" = 1'-0"



1 ELEV #5 SECTION  
A2213 A6306 1/4" = 1'-0"