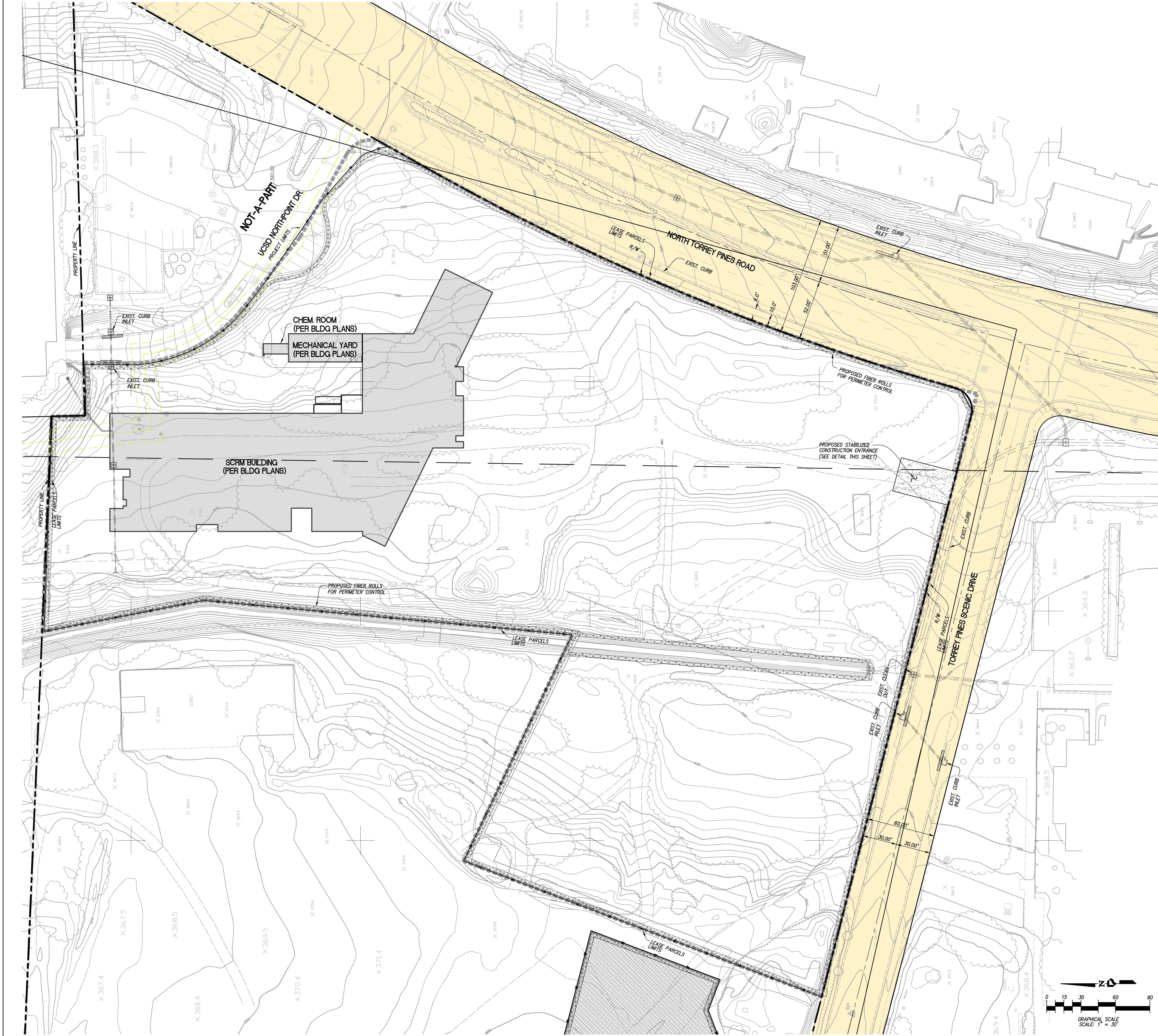
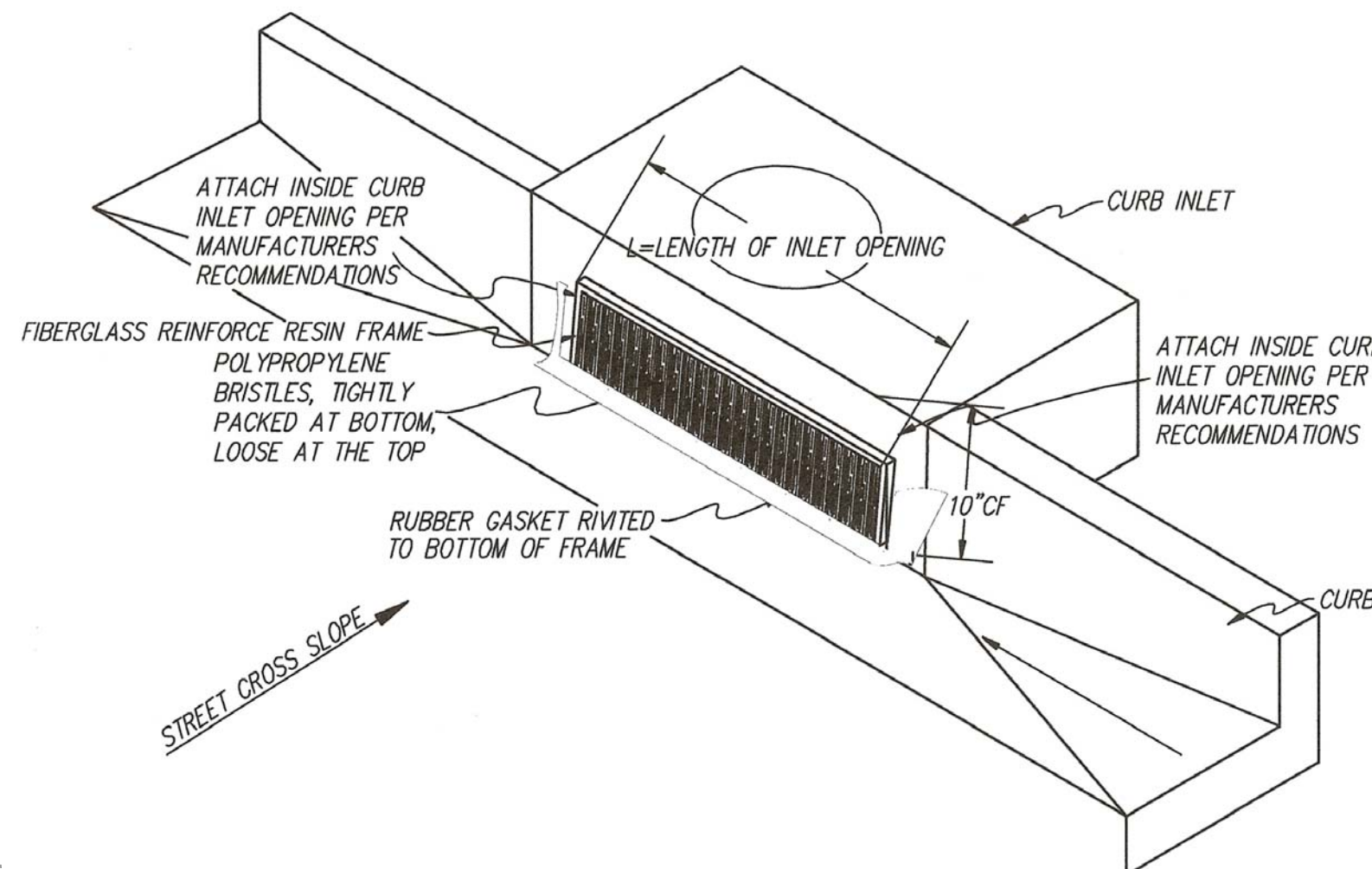


05/20/09 4:55:45 PM C:\3658\FINER\_PLANS\Grassden\_Planes\3658 C1009\_erosion.dwg 5/5/2009 4:48:16 PM

File location field



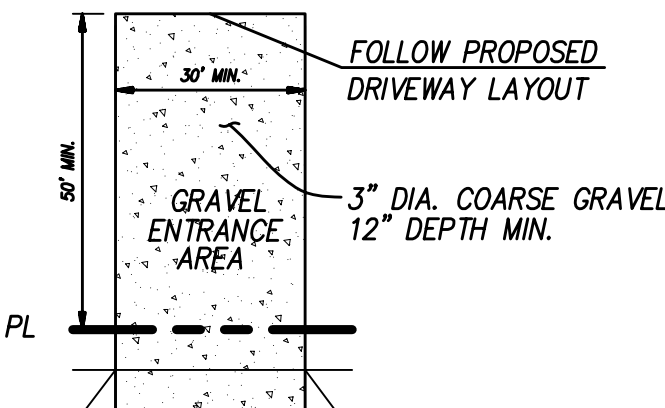
SEE SHEET C1008



### STREAMHAWK - STORM DRAIN INLET PROTECTION

NO SCALE

NOTE: STREAMHAWK IS ALLOWED AS ALTERNATIVE TO INSERT FILTER FABRIC OR EQUAL



### STABILIZED CONSTRUCTION DRIVEWAY ENTRANCE EROSION CONTROL DETAIL

#### LEGEND

- ..... PROPERTY LINE
- PROJECT LIMITS
- ..... PROPOSED BUILDING PER ARCHITECT
- ..... PROPOSED STABILIZED CONSTRUCTION ENTRANCE
- ..... PROPOSED FIBER ROLL
- ..... PROPOSED STREAMHAWK IS ALTERNATIVE TO INSERT FILTER FABRIC OR EQUAL
- ..... PROPOSED 6' HIGH CONSTRUCTION FENCE CHAIN LINK WITH GREEN SCREEN
- ..... PROPOSED CONTRACTOR'S STAGING AREA

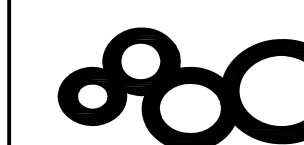
#### NOTE:

1. FOR ALL EROSION CONTROL MEASURES, SEE NOTES ON SHEET C1002 & SHPPP BY PDC DATE OF INITIAL PREPARATION: NOVEMBER 13, 2008.

ISSUED FOR DATE	
BID PK #1	10.06.08
50% PROGRESS	10.24.08
BD PK #1 80% CD	12.01.08
BD PK #1 100% CD	02.16.09
BD PK #2 100% CD	03.26.09
100% CD	05.08.09

## SANFORD CONSORTIUM FOR REGENERATIVE MEDICINE

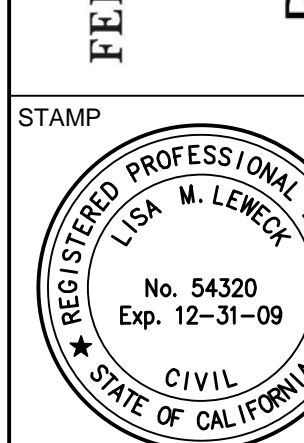
La Jolla, CA



CONSULTANT  
**PROJECT DESIGN CONSULTANTS**  
Planning Landscape Architecture Engineering Science  
P.L.A.E.S. Inc.  
1000 Camino del Rio South, Suite 100  
San Diego, CA 92108  
Tel: 619.594.8800  
Fax: 619.594.8801  
www.plaes.com

LanMordPhelps Consortium LLC  
1000 Camino del Rio South, Suite 100  
San Diego, CA 92108  
Tel: 619.594.8800  
Fax: 619.594.8801  
www.lanmordphelps.com

**FENTRESS ARCHITECTS**  
425 Broadway, Suite 200  
San Diego, CA 92101  
Tel: 619.594.8800  
Fax: 619.594.8801  
www.fentress.com



SHEET NAME  
STAGING AREA AND EROSION CONTROL PLAN

DRAWN BY:  
PROJECT #:  
SHEET NUMBER

C1009