

ISSUED FOR DATE	
Pre-Schematic Design	07/14/2008
Schematic Design	07/28/2008
BID PK #1	10/06/2008
50% PHOTOPHOS	10/24/2008
BID PK #1 80 CD	12/01/2008
BID PK #1 100 CD	02/15/2009
BID PK #2 100 CD	03/26/2009
100% CD	10/08/2009
CD 4	01/07/2010
COB 1	02/26/2010
COB 2	03/26/2010
CD 4	04/15/2010

GENERAL NOTES:  
1. ALL 277V LIGHT FIXTURES ON THE ROOF SHALL BE CIRCUITED TO PANEL 44A UNLESS OTHERWISE NOTED. CIRCUIT NUMBER INDICATED.  
2. ROUTE CONDUIT IN 4TH FLOOR CEILING.

KEYNOTES:  
1. PROVIDE CONNECTION TO EMERGENCY BATTERY PACK AHEAD OF LOCAL SWITCHING.  
2. MOUNT PHOTOCELL TO TOP OF SCREENED WALL. ORIENT FACING NORTH. CIRCUIT TO 44A-8.

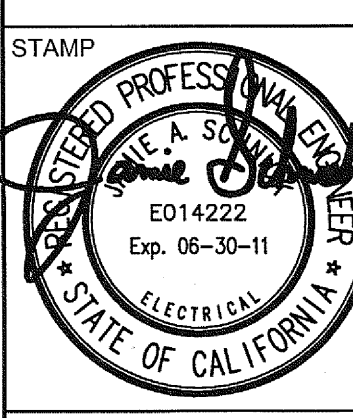
SANFORD CONSORTIUM FOR REGENERATIVE MEDICINE  
2880 TORREY PINES SCENIC DRIVE  
LA JOLLA, CALIFORNIA 92037



CONSULTANT  
**Xerith**  
Xerith Inc. 4000 La Jolla Village Drive, Suite 100  
San Diego, CA 92161  
(619) 594-1000  
www.xerith.com

LandfordPhelps Consortium LLC  
400 West Broadway, Suite 400, San Diego, CA 92101  
(619) 594-1000  
www.landfordphelps.com

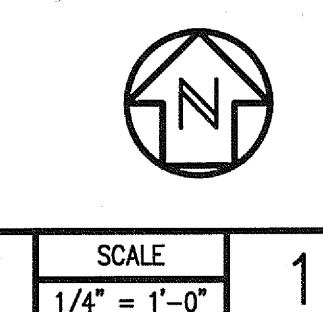
FENTRESS ARCHITECTS  
407 Broadway, Suite 200, San Diego, CA 92101  
(619) 594-1000  
www.fentress.com



SHEET NAME  
PARTIAL LIGHTING ROOF PLAN  
ZONE 2  
DRAWN BY: Author  
PROJECT #: 200725.000  
SHEET NUMBER

E2252

U.C.S.D.  
PRELIMINARY DRAWINGS  
PROGRESS DRAWINGS  
REVIEW DRAWINGS  
CONSTRUCTION DRAWINGS



PARTIAL LIGHTING ROOF PLAN - ZONE 2

1/22/2008 4:52:30 PM  
File Path  
C:\Users\Author\Documents\200725.000\Drawings\Roof\Partial Lighting Roof Plan - Zone 2.dwg

Warning: It is a violation of the law for any person, unless acting under the direction of a licensed architect, to alter an item in any way. If an item in this document is altered, the altering architect, if other than the architect of record, shall affix the item his seal and the notation "altered by" followed by his signature and the date of such alteration, and the specific description of the alteration.