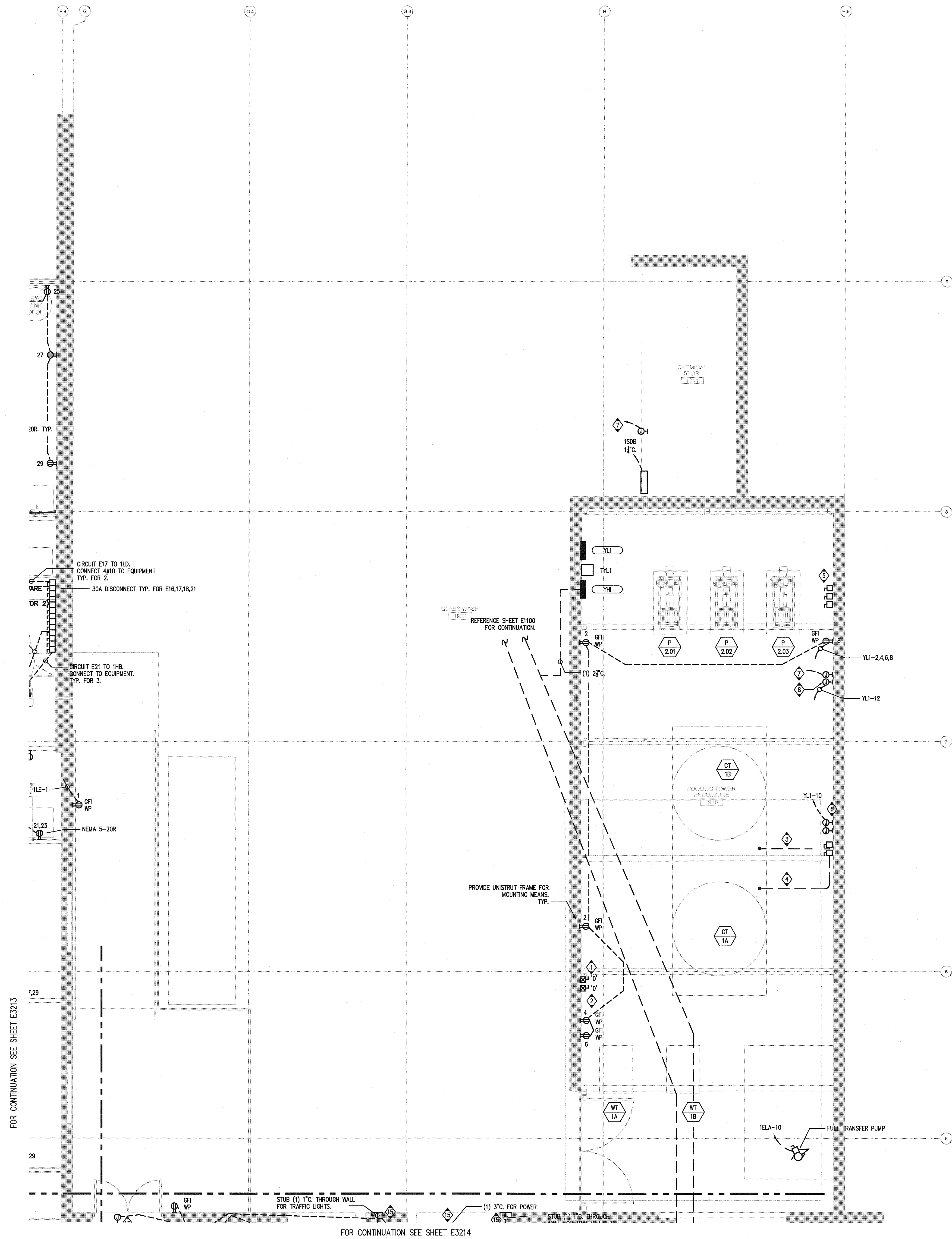
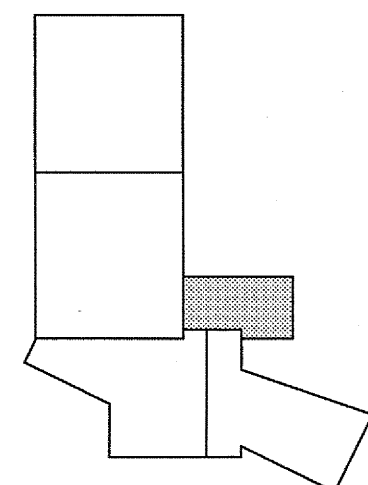
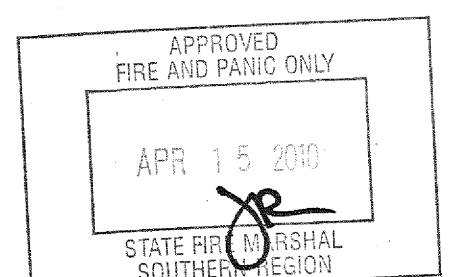


1/22/2008 4:55:10 PM
File Path



- KEY NOTES:
1. CONNECT TO WT-1A.
 2. CONNECT TO WT-1B.
 3. CONNECT TO CT-1A VIA VFD LOCATED IN CHILLER RM. PROVIDE AUXILIARY CONTACT IN DISCONNECT AND CIRCUIT TO VFD LOCATED IN CHILLER ROOM.
 4. CONNECT TO CT-1B VIA VFD LOCATED IN CHILLER RM. PROVIDE AUXILIARY CONTACT IN DISCONNECT AND CIRCUIT TO VFD.
 5. CONNECT TO PUMP. PROVIDE AUXILIARY CONTACT IN DISCONNECT AND CIRCUIT TO VFD LOCATED IN CHILLER ROOM. TYP. FOR 1.
 6. CONNECT TO COOLING TOWER CHEMICAL FEED CONTROLLER.
 7. STUB 1\"/>
 8. CONNECT TO SHOWER VISIBLE ALARM. REFER TO P6001 FOR FURTHER INFORMATION.

DATE	U.C.S.D.
1/21/10	
	PRELIMINARY DRAWINGS
	PROGRESS DRAWINGS
	REVIEW DRAWINGS
	CONSTRUCTION DRAWINGS



PARTIAL POWER FIRST FLOOR PLAN - ZONE 5

SCALE
1/4\"/>

COPYRIGHT ©
FENTRESS ARCHITECTS

ISSUED FOR	DATE
Pre-Schematic Design	07/14/2008
Schematic Design	07/28/2008
BID PK #1	10/06/2008
50% Progress	10/24/2008
BID PK #1 80 CD	12/01/2008
BID PK #1 100 CD	02/18/2009
BID PK #2 100 CD	03/25/2009
100% CD	05/09/2009
CD 4	01/07/2010
CD 1	02/26/2010
CD 2	02/26/2010
CD 4	04/15/2010

SANFORD CONSORTIUM FOR REGENERATIVE MEDICINE

2880 TORREY PINES SCENIC DRIVE
LA JOLLA, CALIFORNIA 92037

FENTRESS ARCHITECTS
447 Broadway, Suite 200
San Diego, CA 92101
619.594.8888
www.fentress.com

DAVIS DAVIS ARCHITECTS
200 First Avenue, Suite 200
San Diego, CA 92101
619.594.8888
www.davisdavis.com

STAMP
FENTRESS ARCHITECTS
APR 15 2010
STATE OF CALIFORNIA
PROFESSIONAL ENGINEER
ALEXANDER J. FENTRESS
Exp. 06-30-11

SHEET NAME
PARTIAL POWER FIRST FLOOR
PLAN - ZONE 5

DRAWN BY: Author

PROJECT #: 000725.000

SHEET NUMBER

E3215