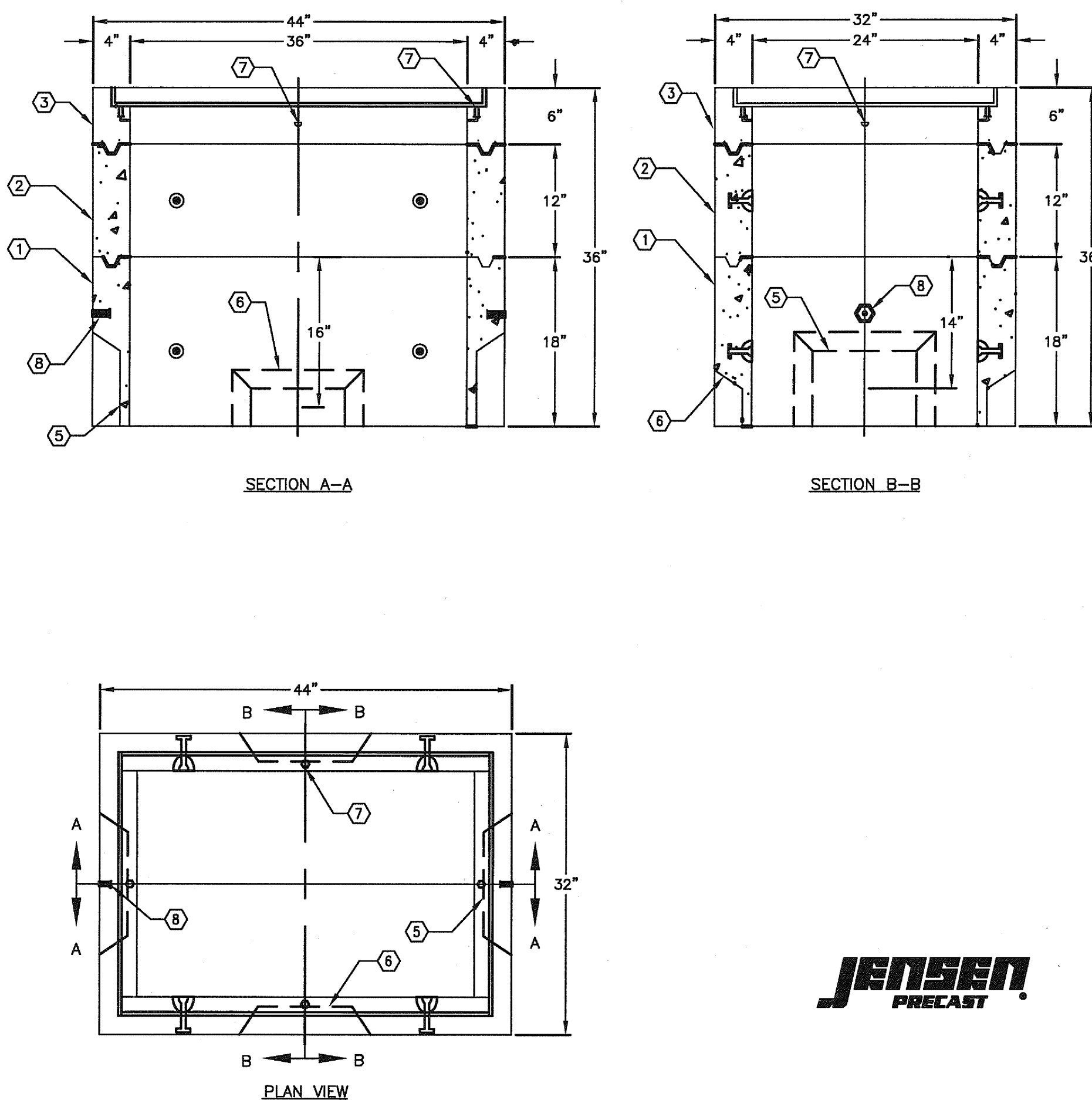


- 
- Figure 1 is an isometric view of a corner of a wall assembly. The diagram shows a corner with various components labeled 1 through 7. Dimensions are provided for the wall thickness (6 inches), height (12 inches and 18 inches), and width (32 inches and 44 inches). A cross-section view is shown in the center, indicating angles of 36 degrees and 24 degrees. A small inset shows a detail of a door or window frame.

K2436-FH36-21 FOR ASSEMBLY AS SHOWN.  
APPROVED FOR CITY OF RIVERSIDE PB-1 OR PB-2  
TOTAL WEIGHT OF ASSEMBLY SHOWN AS 1,740 lbs.

MINIMUM EXCAVATION SIZE:  
3'-2" x 4'-2" x DEPTH REQ'D.



3660A1-TRE, 555 LBS. (H-20 TRAFFIC)

\*NOTE: THIS COVER MEETS H-20 WHEEL LOADING, HOWEVER, IT IS NOT RECOMMENDED FOR IN STREET USE, BEST FOR USE IN OFF-STREET LOCATIONS OR OCCASIONAL TRAFFIC.

SAFETY LATCH

3"

DIAMOND PLATE SURFACE

IDENTIFICATION PLATE

A

OPTIONAL RISERS (EXTENSIONS)		
MODEL NO.	A	WEIGHT
35-R4	4"	270 LBS.
35-R6	6"	420 LBS.
35-R8	8"	540 LBS.
35-R12	12"	835 LBS.

3660 PULLBOX

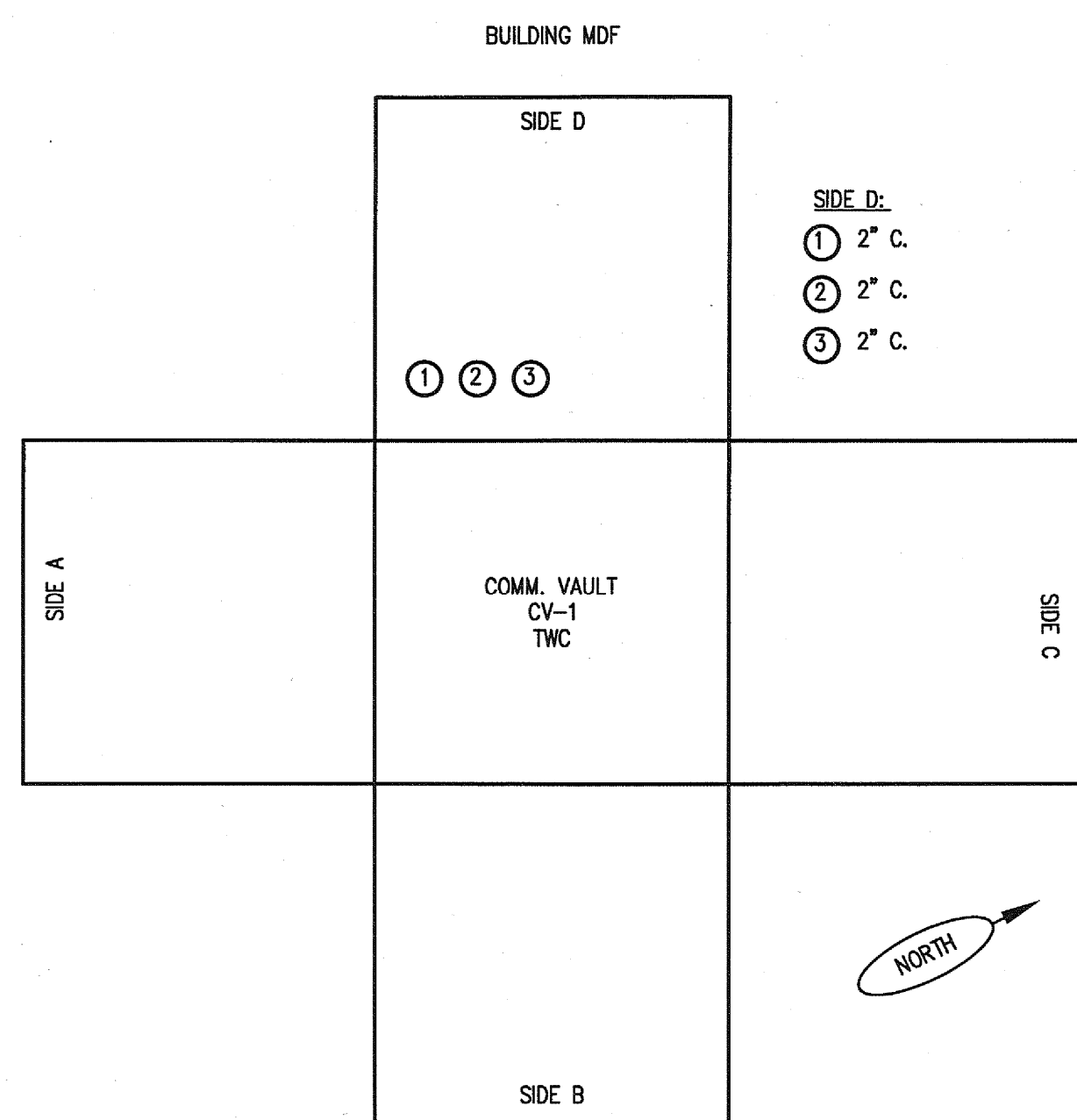
3'-0" x 5'-0" x 3'-0" I.D.

7/5/06  
PB3660\_FC\_A.dwg  
© 2006 Jensen Precast

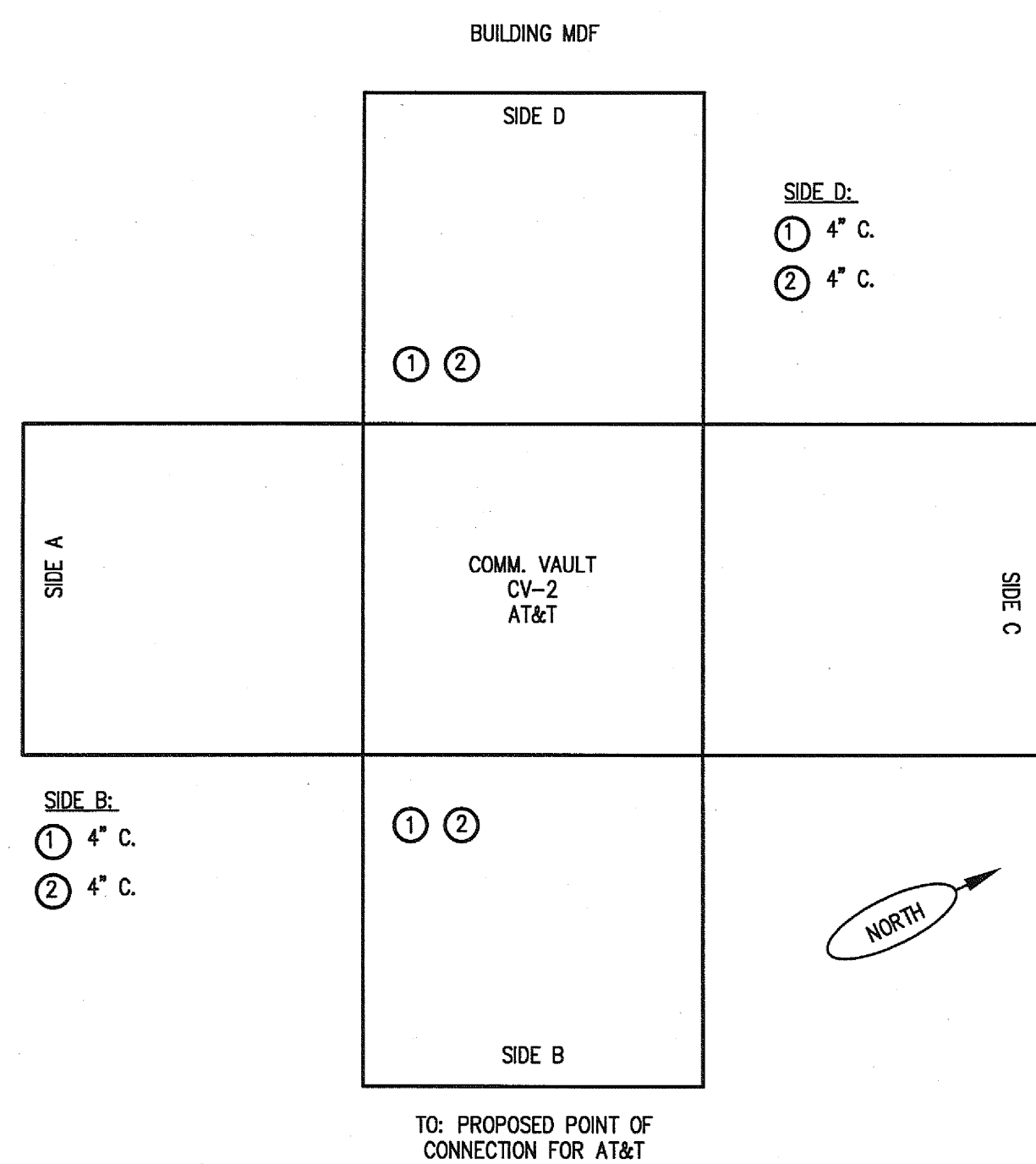
FOR COMPLETE DESIGN AND PRODUCT INFORMATION,  
CONTACT JENSEN PRECAST.

SCALE	4
NONE	

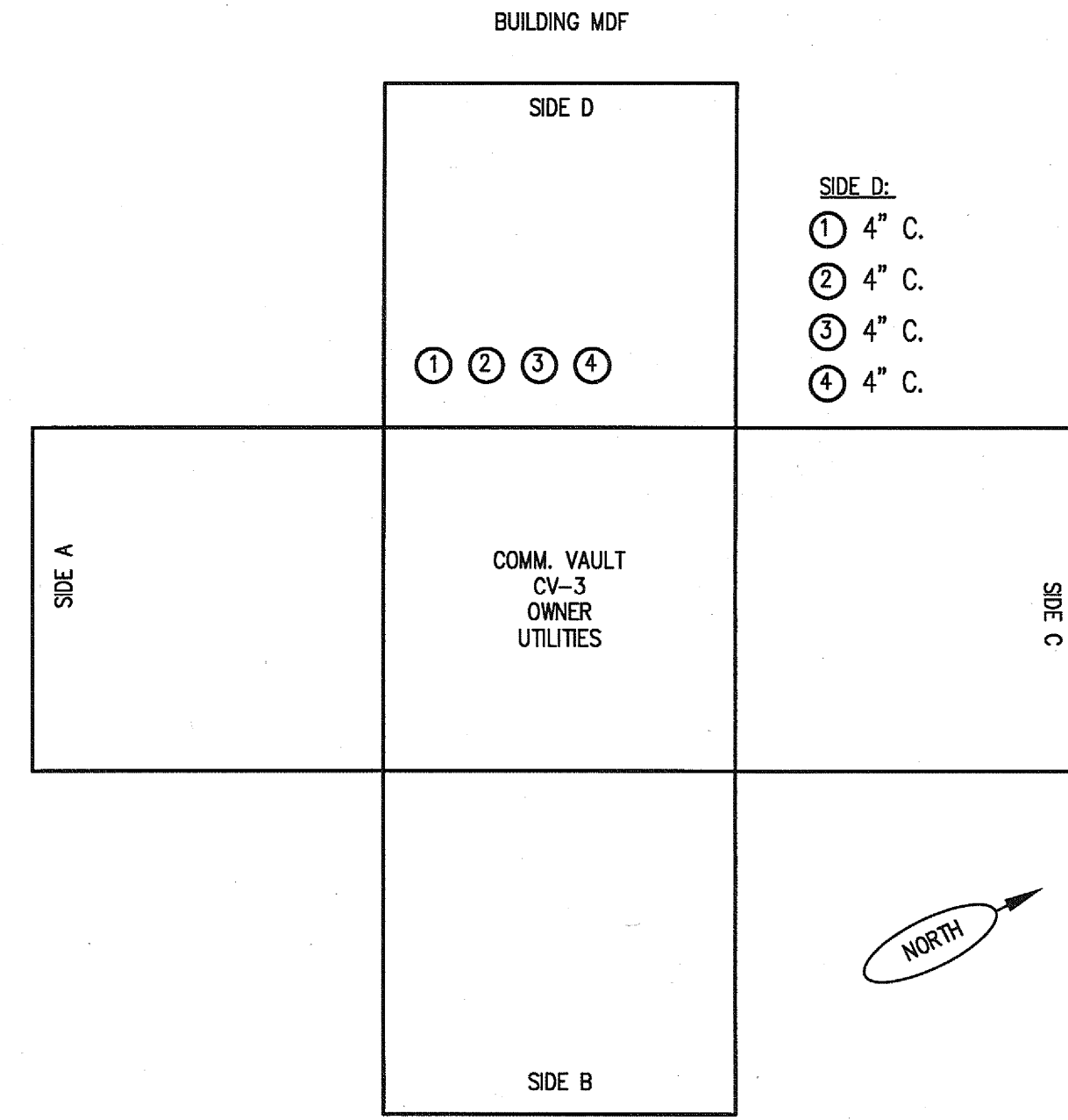
SCALE	1
NONE	



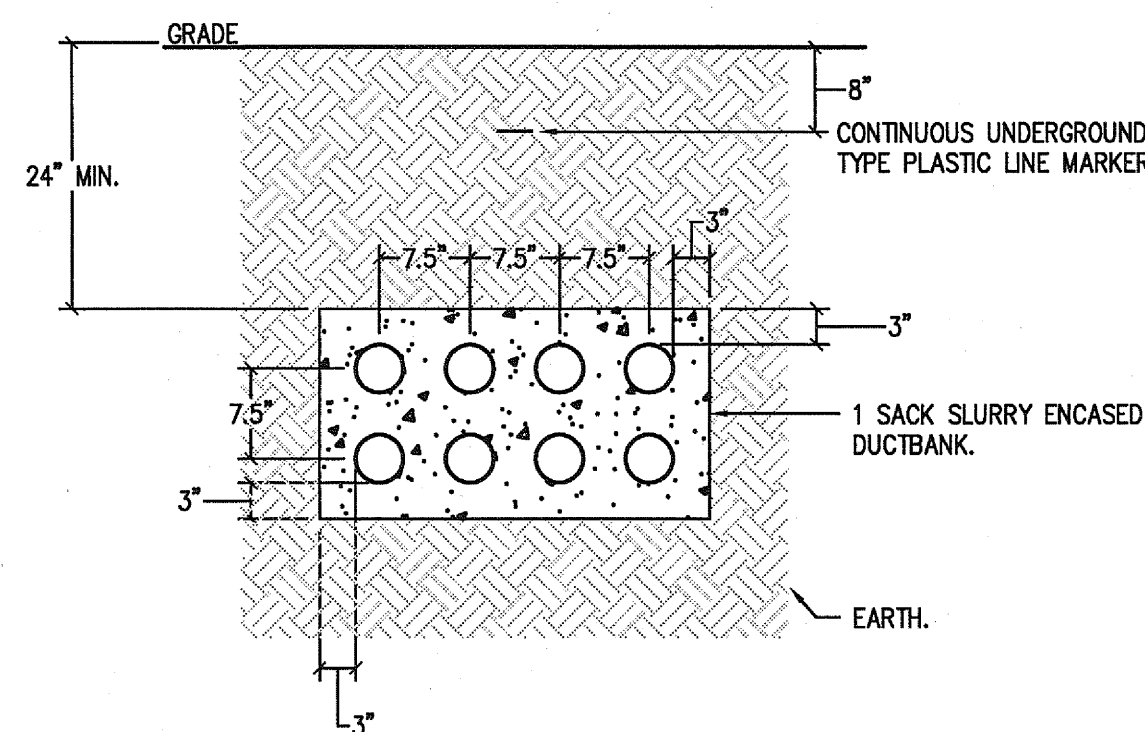
SCALE	7
-------	---



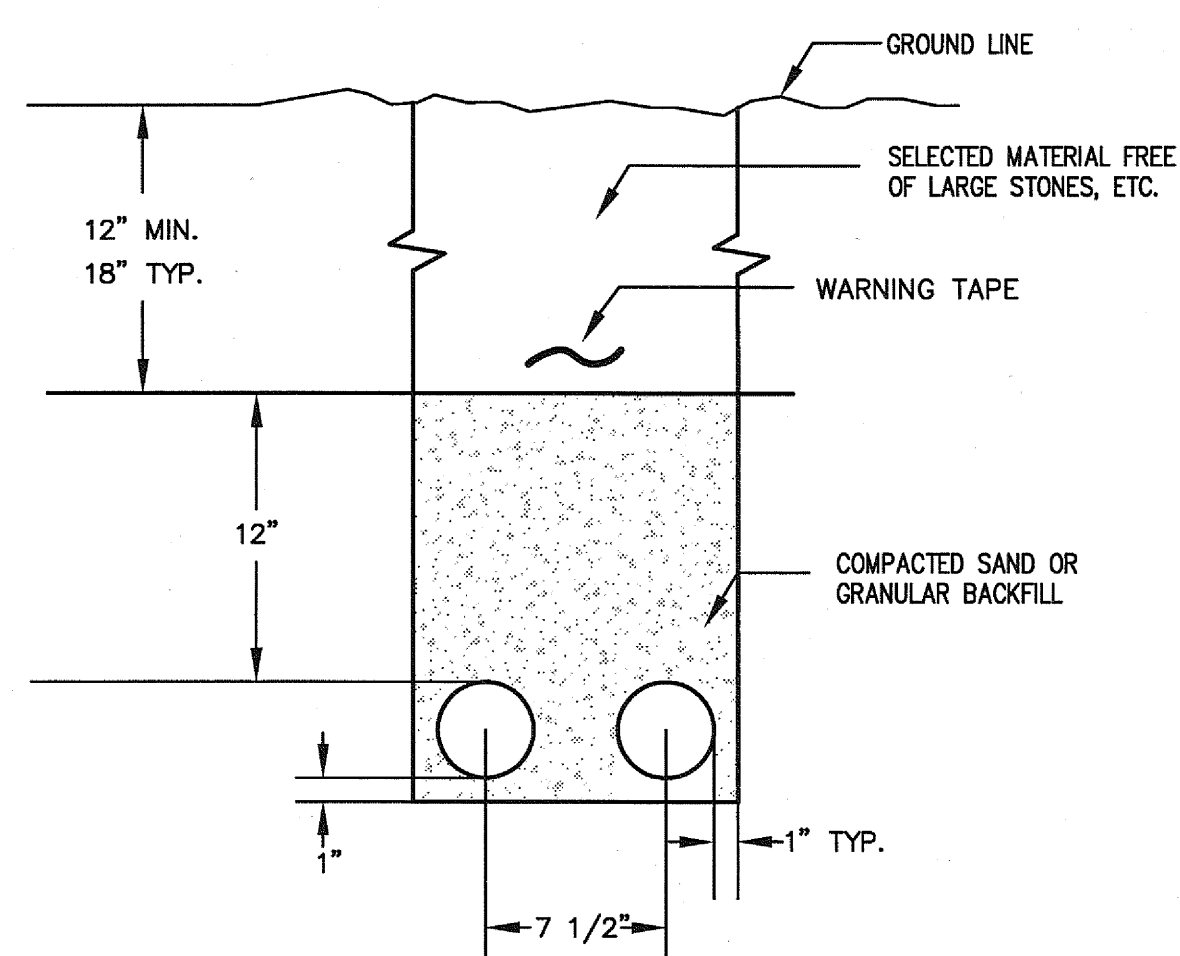
SCALE	5
-------	---



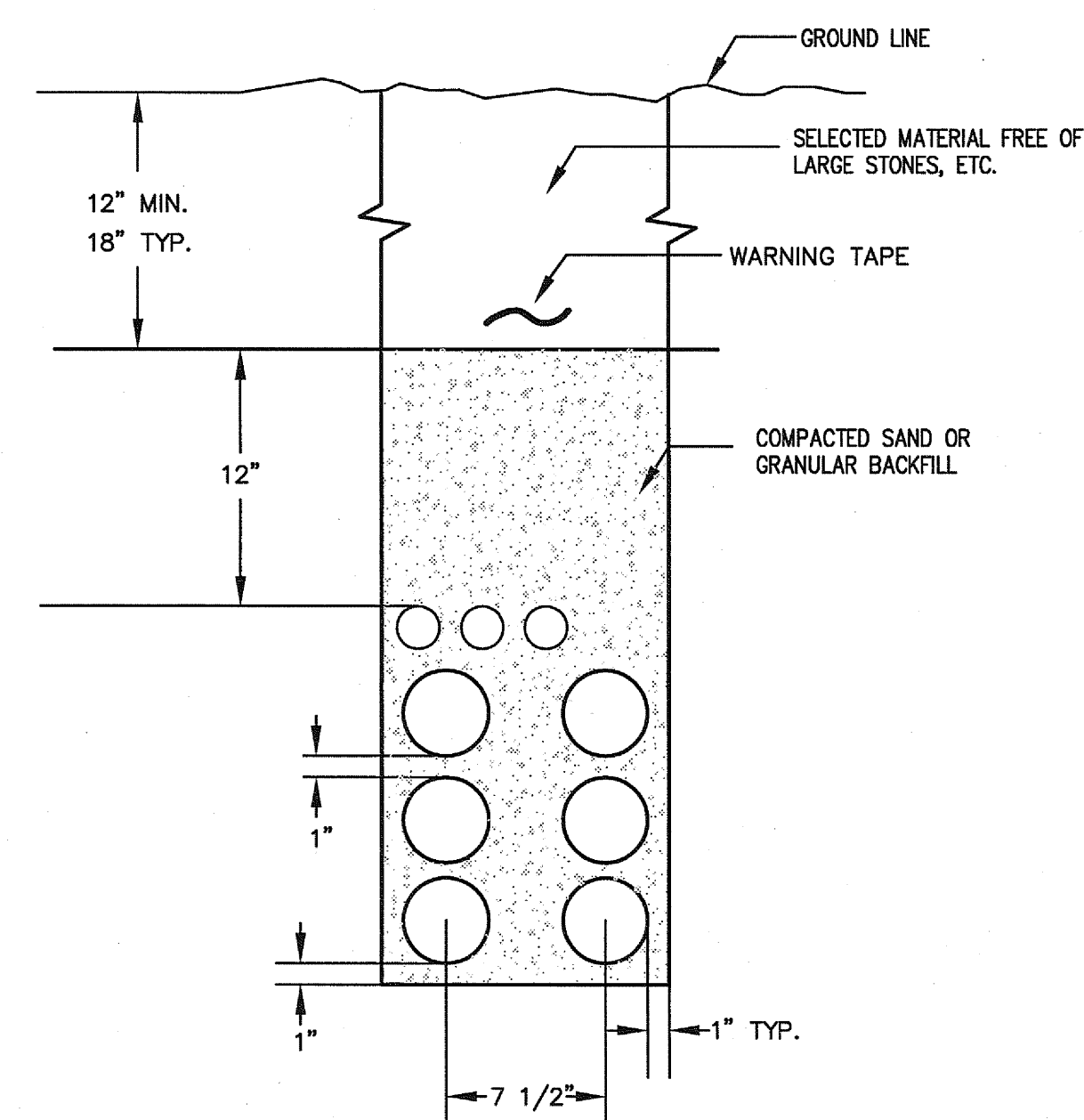
SCALE	2
-------	---



SCALE	8
NOTE	



SCALE	6
NONE	



SCALE	3
NAME	

<div style="display: flex; justify-content: space-between;"> <span><i>Cla</i></span> <span>U.C.S.D.</span> </div>	
<div style="border: 1px solid black; padding: 5px; width: 100px; text-align: center;"> 4/21/10  DATE </div>	PRELIMINARY DRAWINGS <input type="checkbox"/>
	PROGRESS DRAWINGS <input type="checkbox"/>
	REVIEW DRAWINGS <input type="checkbox"/>
	CONSTRUCTION DRAWINGS <input checked="" type="checkbox"/>

SANFORD CONSORTIUM FOR REGENERATIVE MEDICINE

2880 TORREY PINES SCENIC DRIVE  
LA JOLLA, CALIFORNIA 92037

**J San Diego - North**  
San Dr.  
CA 92121  
655 | fax 858.597.0585  
ext 444 2004104



**Xanth Inc.**  
5870 Otter  
San Diego  
658.937.01

nsortium LLC  
n Diego, CA 92101  
619-752-1552 Fax


**St. James/St. James**  
West Broadway, Suite 1450 St. James  
732-5525

TECTS

ESS | ARCHITECTS  
Woodway, Denver, CO 80202  
303.722.5000

FENTRI  
425 Br  
DAV  
A B C

STAMP  
REGISTERED PROFESSIONAL ENGINEER  
S.M.E. A. SCHMIDT  
E014222  
Exp. 08-30-11

 SHEET NAME  
ELECTRICAL DETAILS

DRAWN BY: Author
PROJECT #: 200725.000
SHEET NUMBER

E4001

---