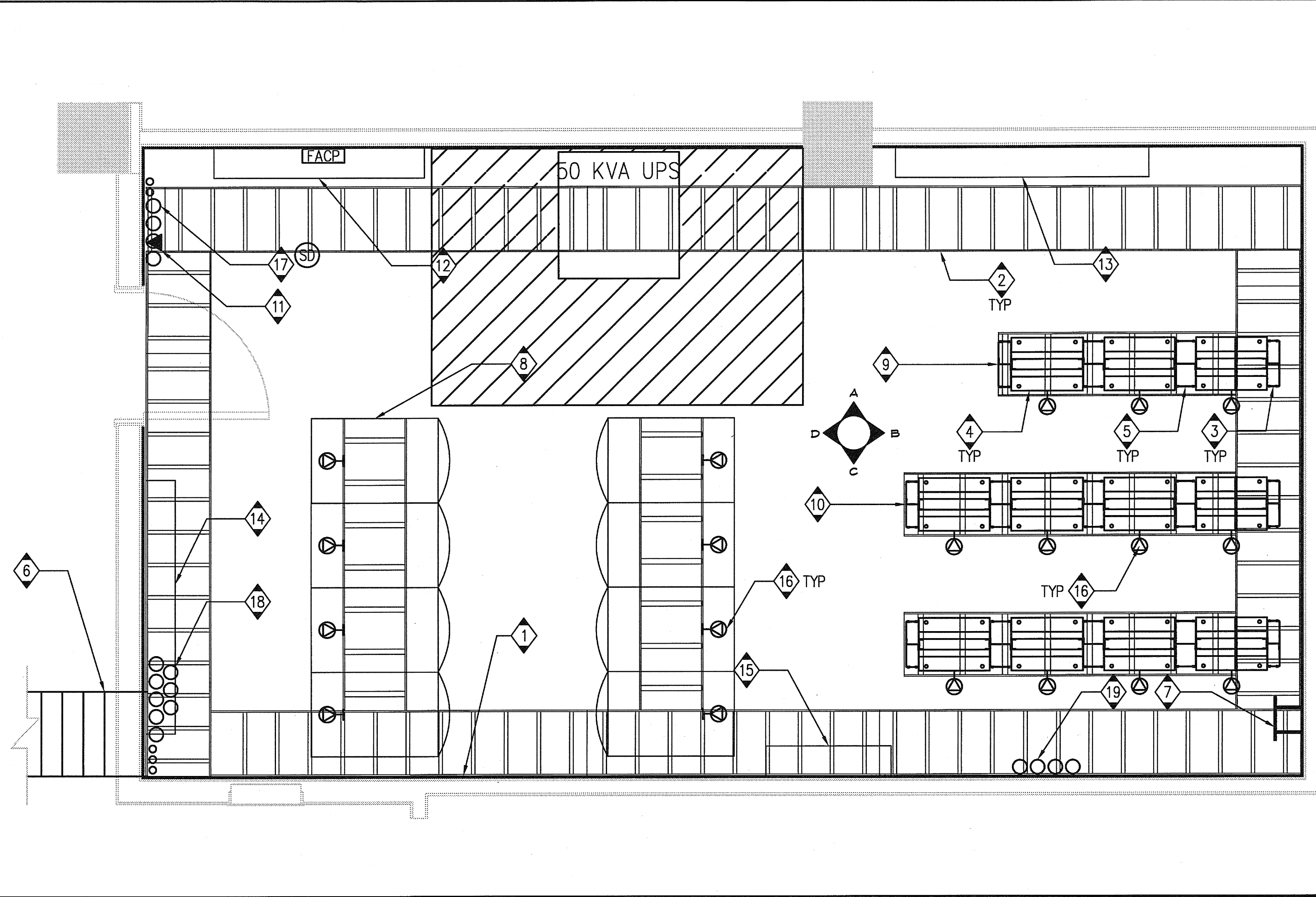


MDF 1.01 ELEVATION 'A'

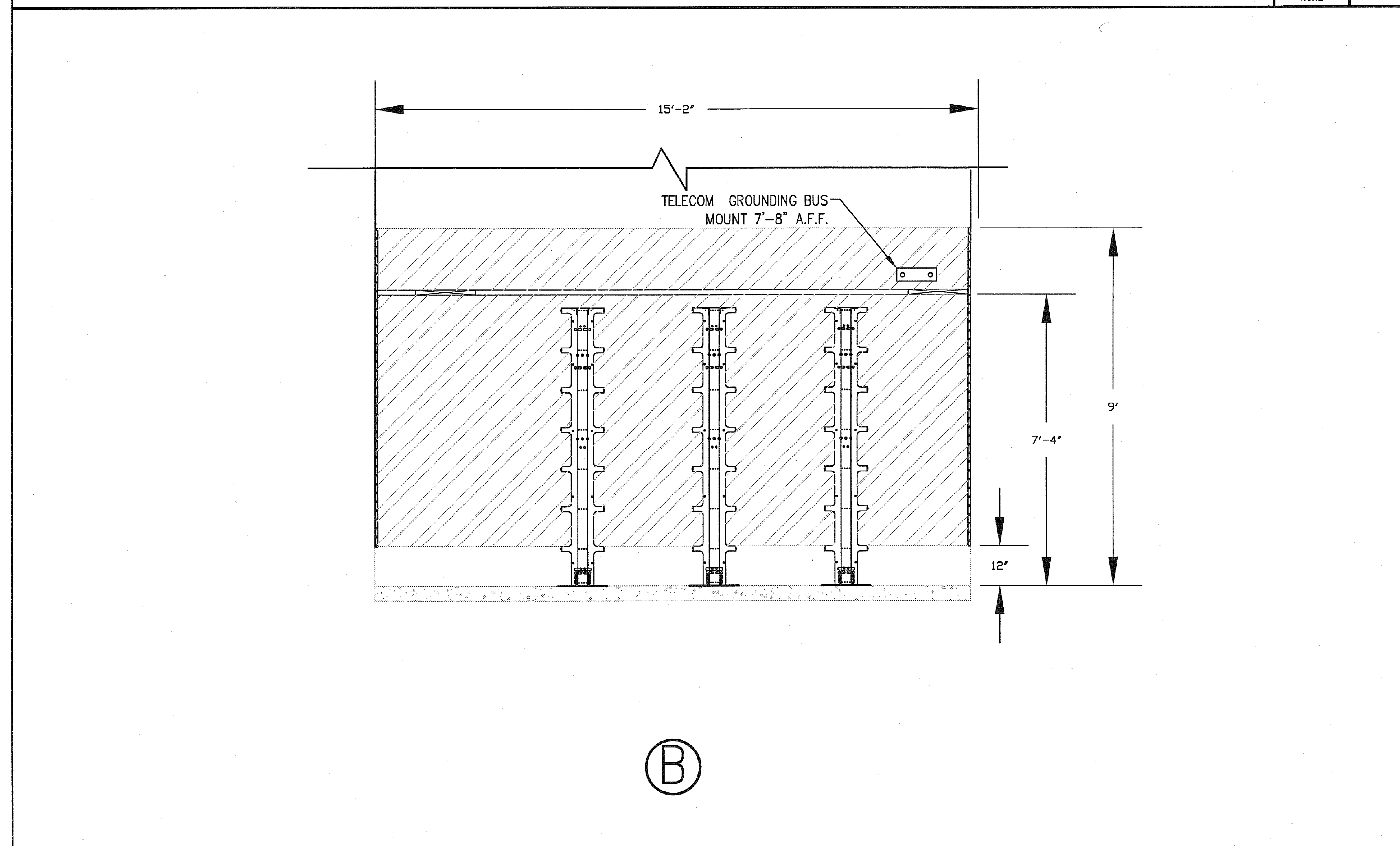
SCALE
NONE 4



MDF 1.01 ENLARGED ROOM

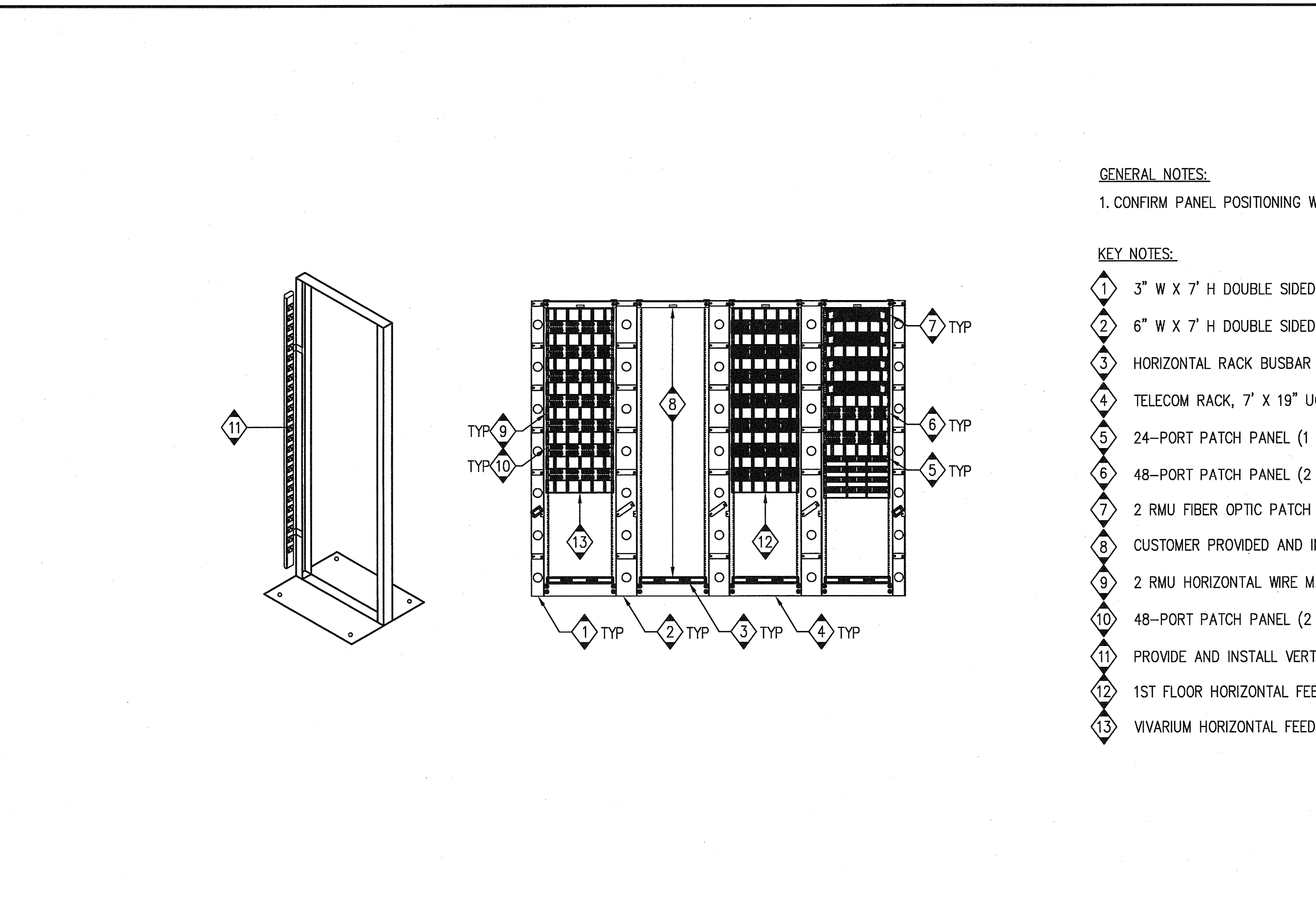
SCALE
NONE 1

- GENERAL NOTES:**
- FLOORING SHALL BE VCT.
- KEY NOTES:**
- 8' H, 3/4" FIRE RATED PLYWOOD WITH STAMP VISIBLE (TYPICAL).
 - 18" LADDER RACK, 7'-4" AFF, UON (TYPICAL).
 - 3" W X 7' H DOUBLE SIDED VERTICAL WIRE MANAGER (TYPICAL).
 - TELECOM RACK, 7'-0" AFF. UON (TYPICAL).
 - 6" W X 7' H DOUBLE SIDED VERTICAL WIRE MANAGER.
 - 24" W X 4" D CABLE TRAY. FOR VOICE AND DATA STATION CABLING FROM FLOOR.
 - GROUNDING BUS BAR, 7'-8" AFF. UON.
 - SERVER CABINET EQUIPMENT ROW.
 - CCTV EQUIPMENT ROW.
 - VOIP PBX EQUIPMENT ROW.
 - WALL PHONE, 48" A.F.F.
 - SPACE RESERVED FOR FIRE EQUIPMENT.
 - SPACE RESERVED FOR SECURITY EQUIPMENT.
 - SPACE RESERVED FOR AT&T ENTRANCE FACILITIES.
 - SPACE RESERVED FOR CATV EQUIPMENT.
 - NEMA L5-30R DEDICATED UPS CIRCUIT, MOUNTED TO "C" CHANNEL (EQUAL TO UNSTRUT) 1/2" ABOVE LADDER RACK (TYPICAL).
 - (4) 4" & (2) 2" C. SLEEVES TO 2ND FLOOR IDF 2.01.
 - (8) 4" & (3) 2" C. VAULTS.
 - (4) 4" C. SLEEVES TO VIVARIUM.



MDF 1.01 ELEVATION 'B'

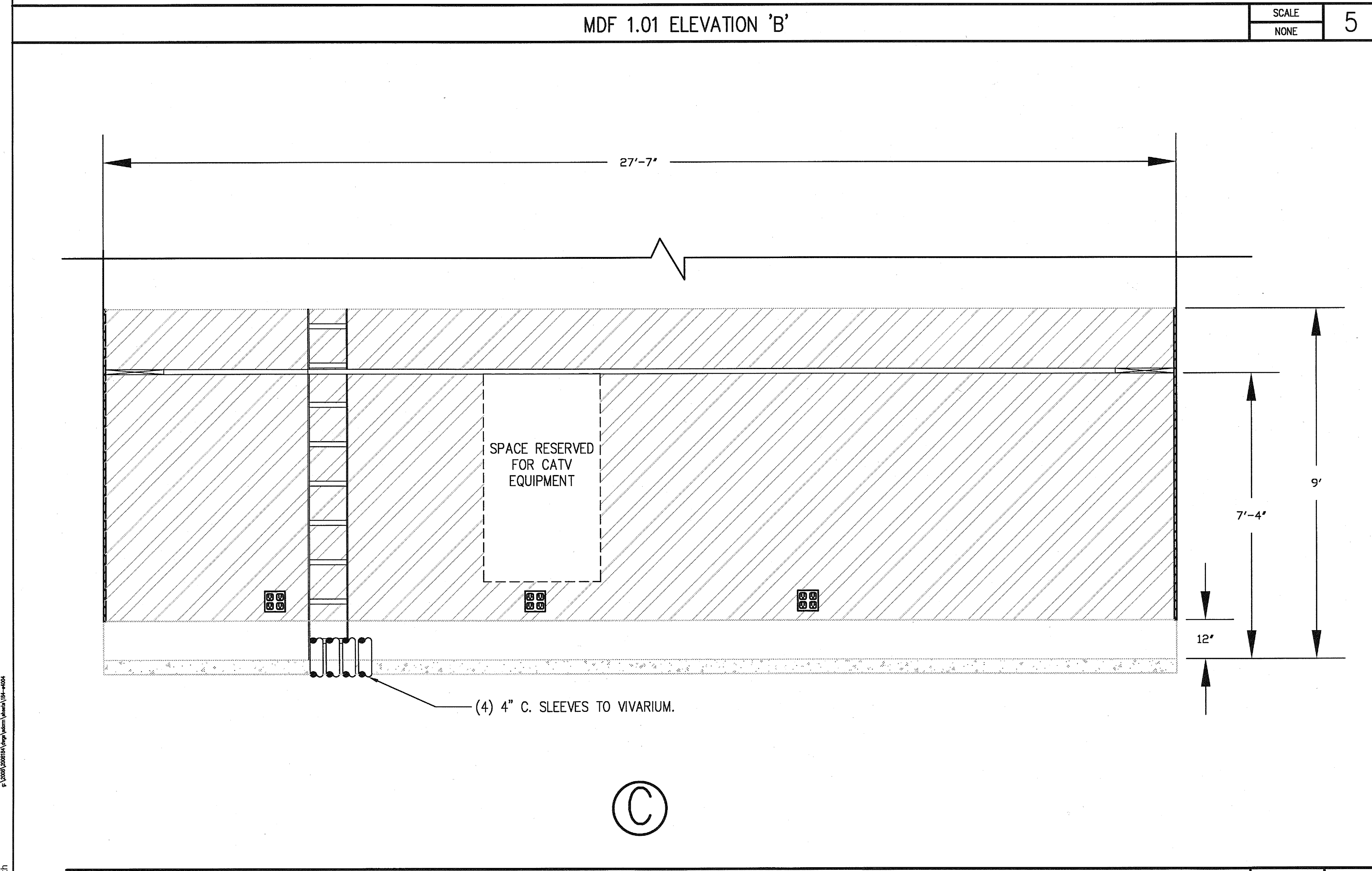
SCALE
NONE 5



EQUIPMENT ROW RACK ELEVATION

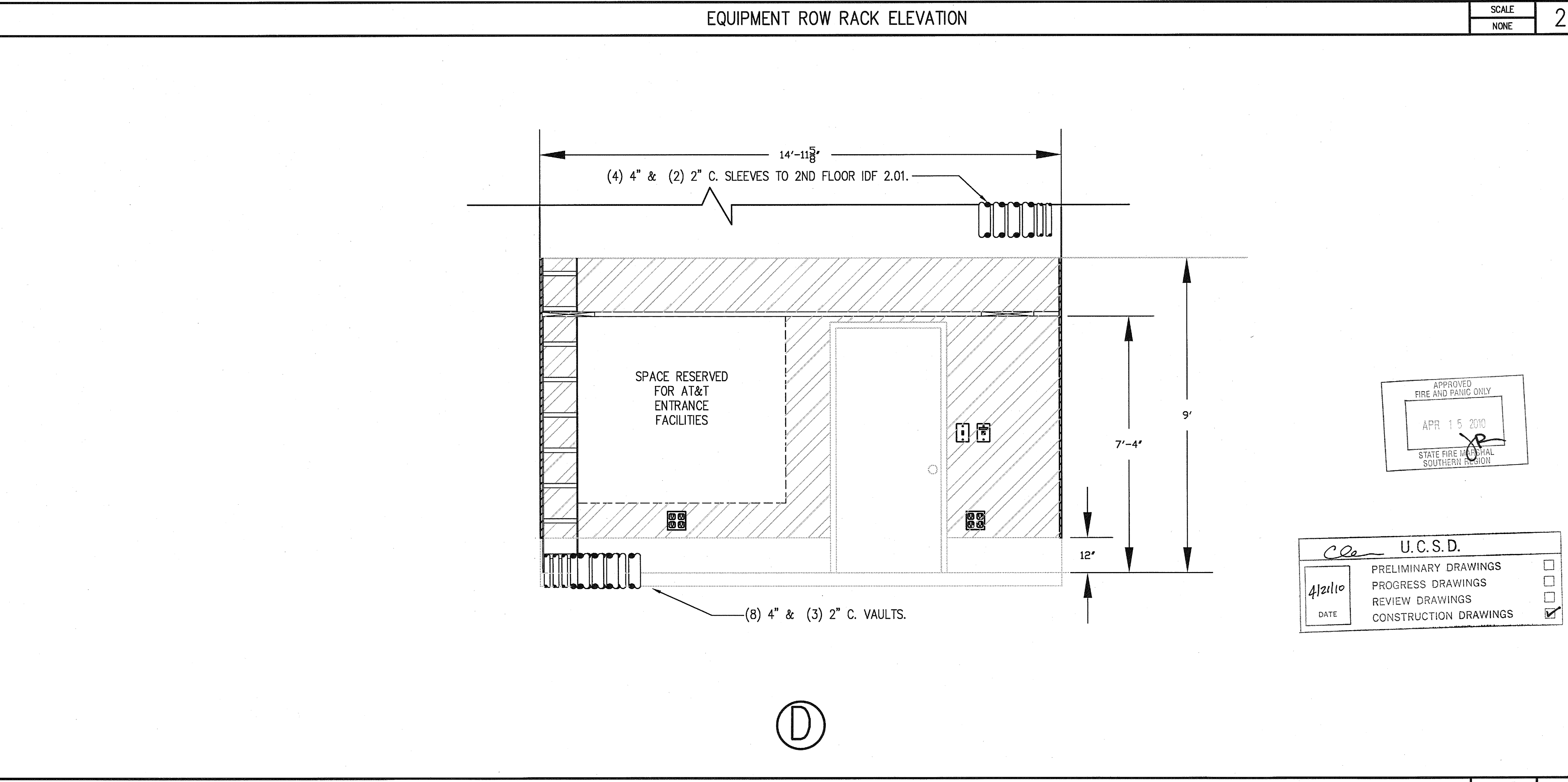
SCALE
NONE 2

- GENERAL NOTES:**
- CONFIRM PANEL POSITIONING WITH OWNER PRIOR TO INSTALLATION.
- KEY NOTES:**
- 3" W X 7' H DOUBLE SIDED VERTICAL WIRE MANAGER.
 - 6" W X 7' H DOUBLE SIDED VERTICAL WIRE MANAGER.
 - HORIZONTAL RACK BUSBAR (TYPICAL).
 - TELECOM RACK, 7' X 19" UON (TYPICAL).
 - 24-PORT PATCH PANEL (1 RMU) FOR COPPER BACKBONE CABLES.
 - 48-PORT PATCH PANEL (2 RMU) TO BACKBOARD CROSSCONNECT.
 - 2 RMU FIBER OPTIC PATCH PANEL FOR FIBER BACKBONE CABLE.
 - CUSTOMER PROVIDED AND INSTALLED EQUIPMENT.
 - 2 RMU HORIZONTAL WIRE MANAGER (TYPICAL).
 - 48-PORT PATCH PANEL (2 RMU'S) FOR STATION CABLE (TYPICAL).
 - PROVIDE AND INSTALL VERTICAL POWER STRIPS (1) PER RACK.
 - 1ST FLOOR HORIZONTAL FEEDS.
 - VIVARIUM HORIZONTAL FEEDS.



MDF 1.01 ELEVATION 'C'

SCALE
NONE 6



MDF 1.01 ELEVATION 'D'

SCALE
NONE 3