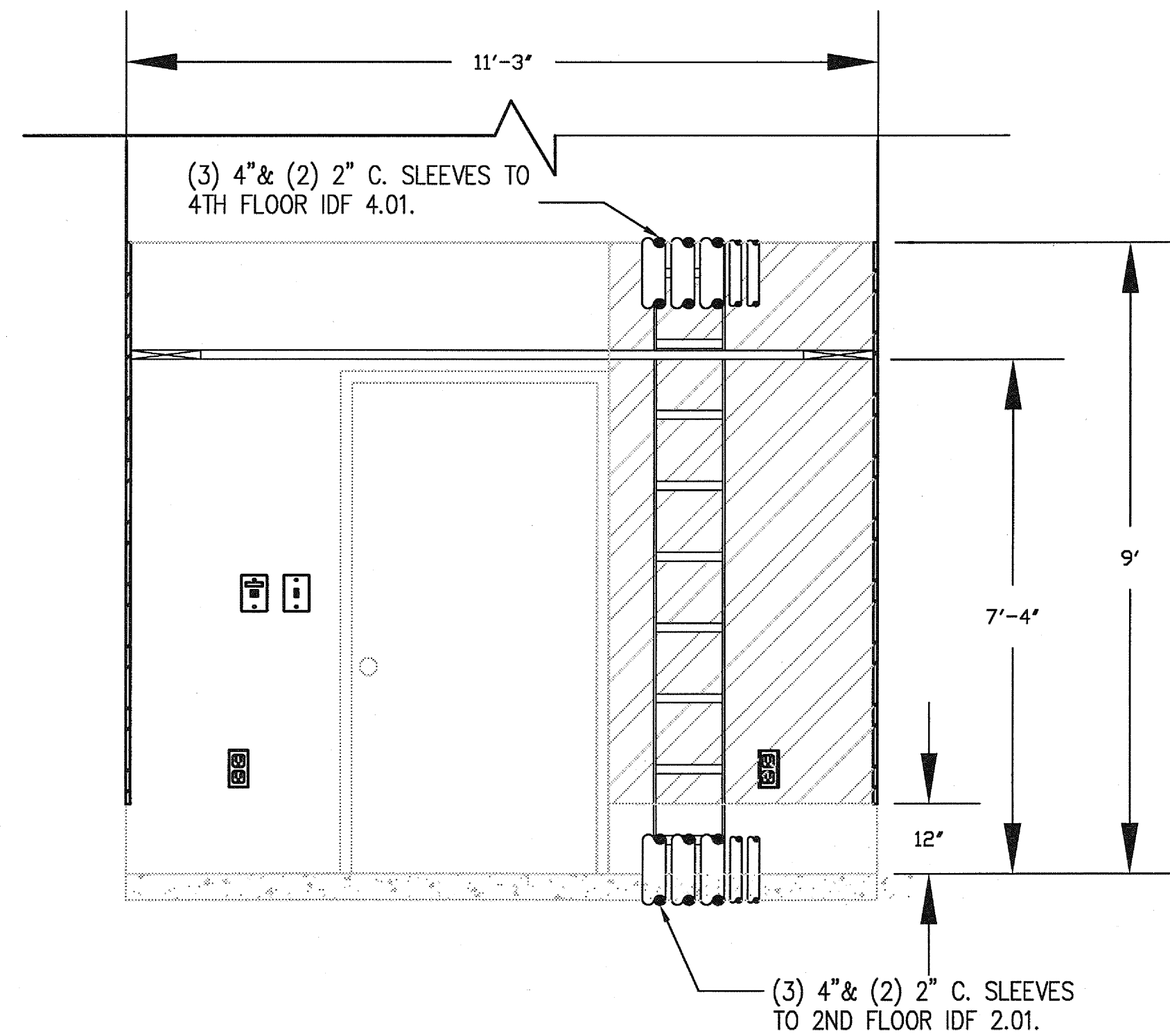


A

IDF 3.01 ELEVATION 'A'

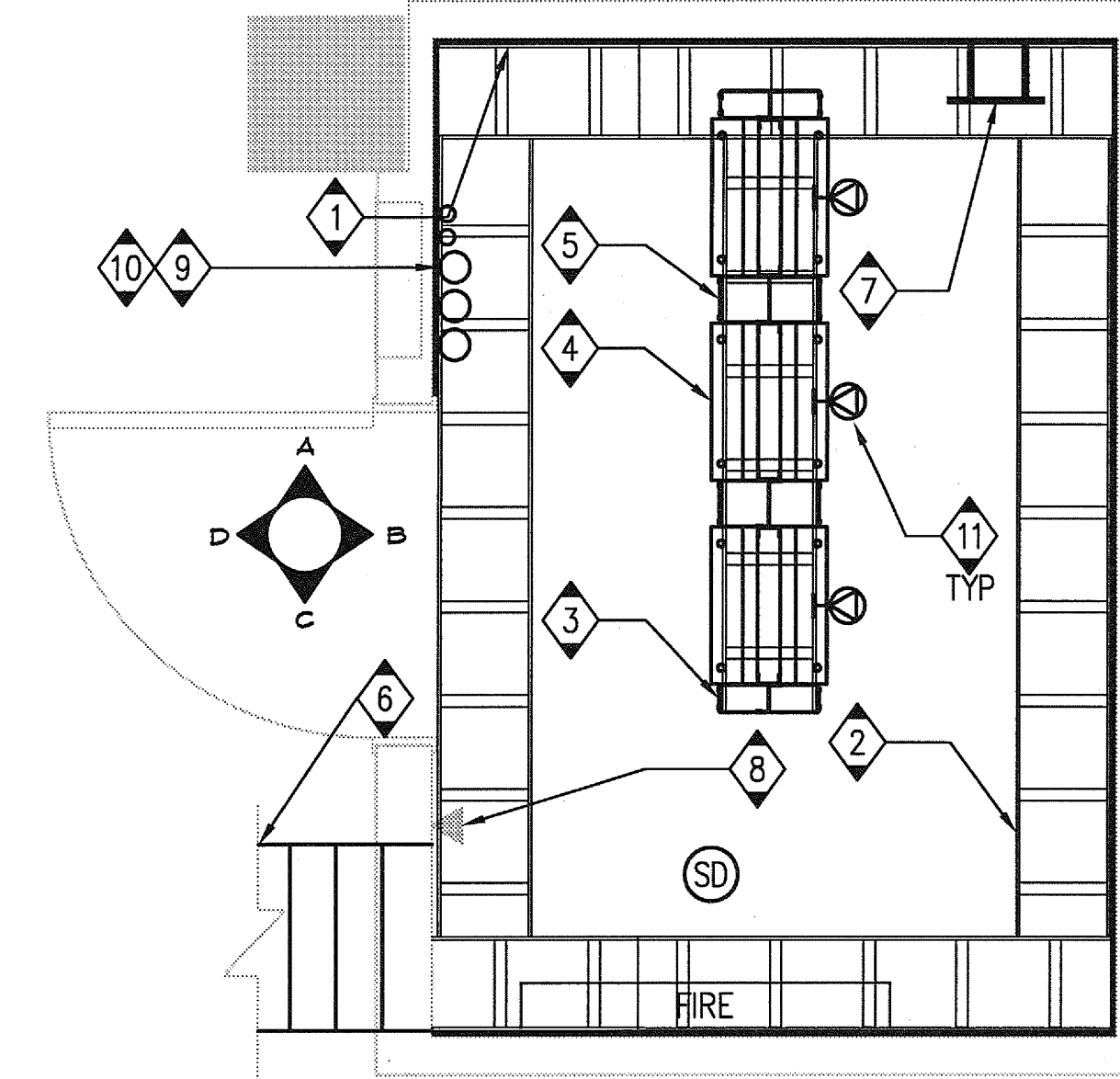
SCALE
NONE 6



D

IDF 3.01 ELEVATION 'D'

SCALE
NONE 4

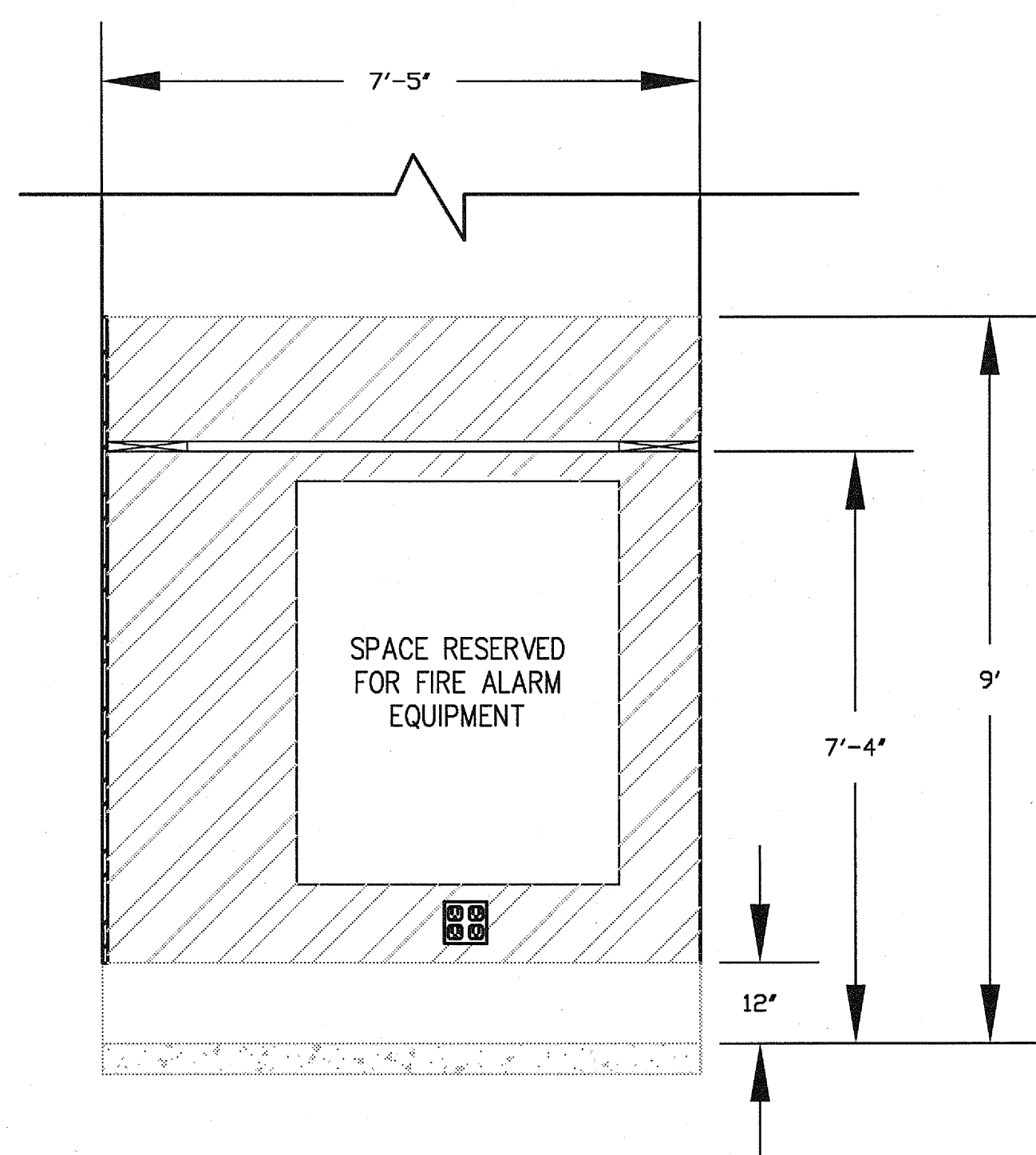


GENERAL NOTES:

- FLOORING SHALL BE VCT.

KEY NOTES:

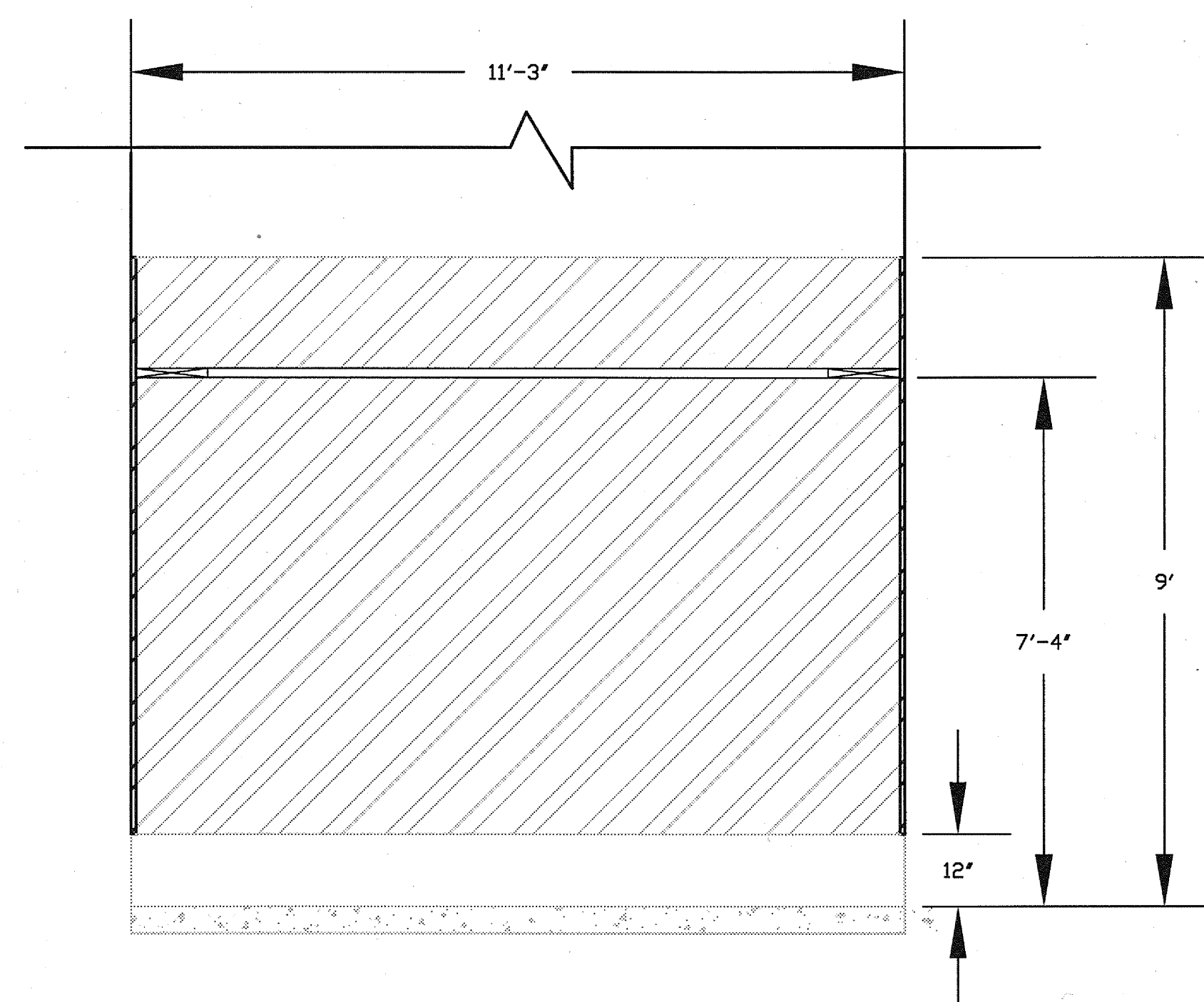
- 8' H, 3/4" FIRE RATED PLYWOOD WITH STAMP VISIBLE (TYPICAL).
- 12" LADDER RACK, 7'-4" AFF, UON (TYPICAL).
- 3" W X 7' H DOUBLE SIDED VERTICAL WIRE MANAGER.
- TELECOM RACK, 7' X 19" UON (TYPICAL).
- 6" W X 7' H DOUBLE SIDED VERTICAL WIRE MANAGER.
- 24" W X 4" D CABLE TRAY. FOR VOICE AND DATA STATION CABLING FROM FLOOR.
- GROUNDING BUS BAR, 7'-8" AFF. UON.
- WALL PHONE, 48" A.F.F.
- (3) 4" & (2) 2" C. SLEEVES TO 2ND FLOOR IDF 2.01.
- (3) 4" & (2) 2" C. SLEEVES TO 4TH FLOOR IDF 4.01.
- NEMA L5-30R DEDICATED UPS CIRCUIT, MOUNTED TO "C" CHANNEL (EQUAL TO UNISTRUIT) 1/2" ABOVE LADDER RACK (TYPICAL).



C

IDF 3.01 ELEVATION 'C'

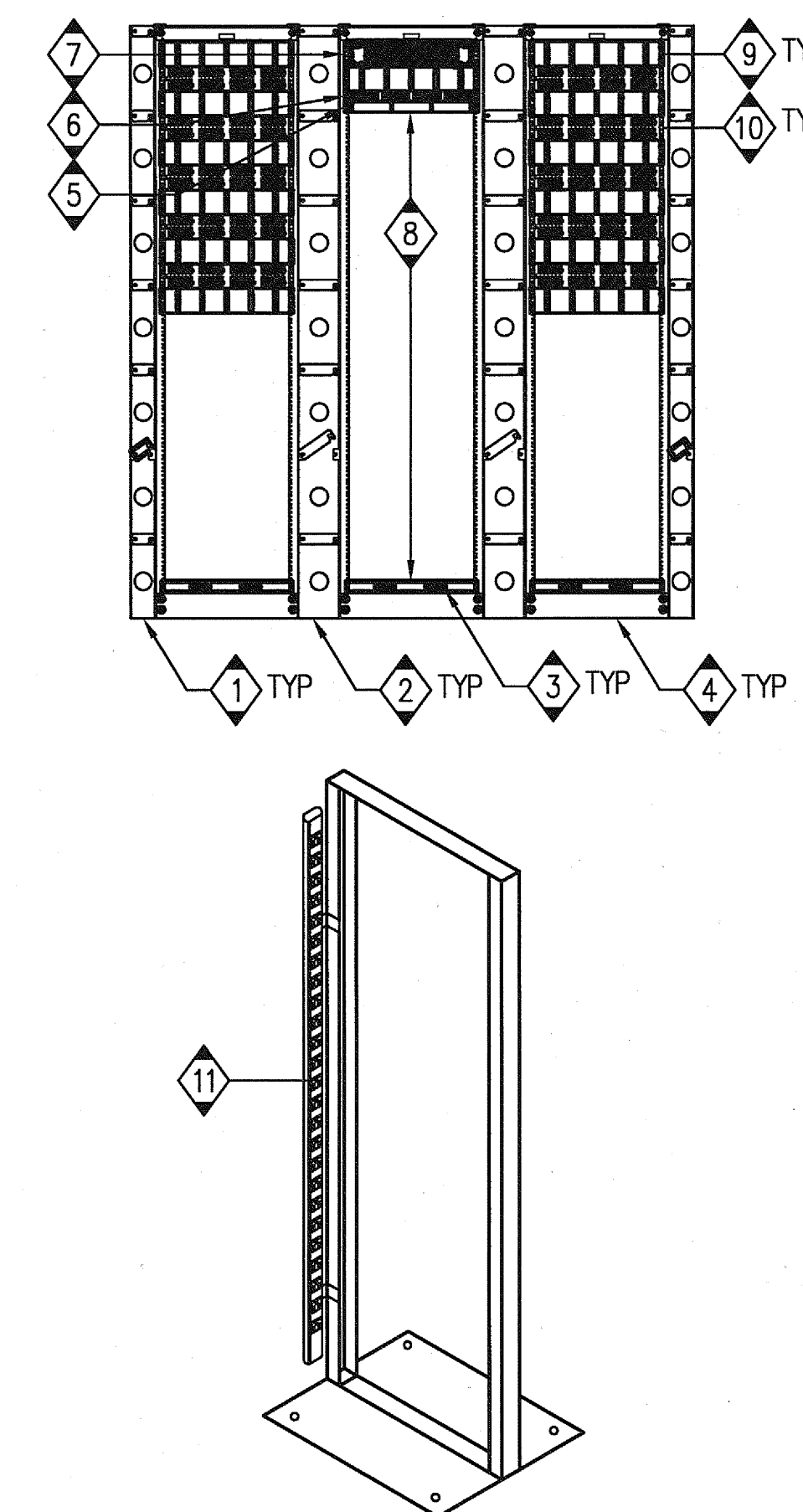
SCALE
NONE 6



B

IDF 3.01 ELEVATION 'B'

SCALE
NONE 4

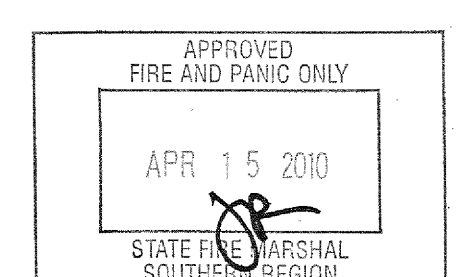


GENERAL NOTES:

- CONFIRM PANEL POSITIONING WITH OWNER PRIOR TO INSTALLATION.

KEY NOTES:

- 3" W X 7' H DOUBLE SIDED VERTICAL WIRE MANAGER.
- 6" W X 7' H DOUBLE SIDED VERTICAL WIRE MANAGER.
- HORIZONTAL RACK BUSBAR (TYPICAL).
- TELECOM RACK, 7' X 19" UON (TYPICAL).
- 1 RMU HORIZONTAL WIRE MANAGER (TYPICAL).
- 24-PORT PATCH PANEL (1 RMU) FOR COPPER BACKBONE CABLE.
- 2 RMU FIBER OPTIC PATCH PANEL FOR FIBER BACKBONE CABLE.
- CUSTOMER PROVIDED AND INSTALLED EQUIPMENT (TYPICAL).
- 2 RMU HORIZONTAL WIRE MANAGER (TYPICAL).
- 48-PORT PATCH PANEL (2 RMU'S) FOR STATION CABLE (TYPICAL).
- PROVIDE AND INSTALL VERTICAL POWER STRIPS (1) PER RACK.



U.C.S.D.	
PRELIMINARY DRAWINGS	<input type="checkbox"/>
PROGRESS DRAWINGS	<input type="checkbox"/>
REVIEW DRAWINGS	<input type="checkbox"/>
CONSTRUCTION DRAWINGS	<input checked="" type="checkbox"/>

3RD FLOOR IDF (3.01) RACK ELEVATION

SCALE
NONE 2

