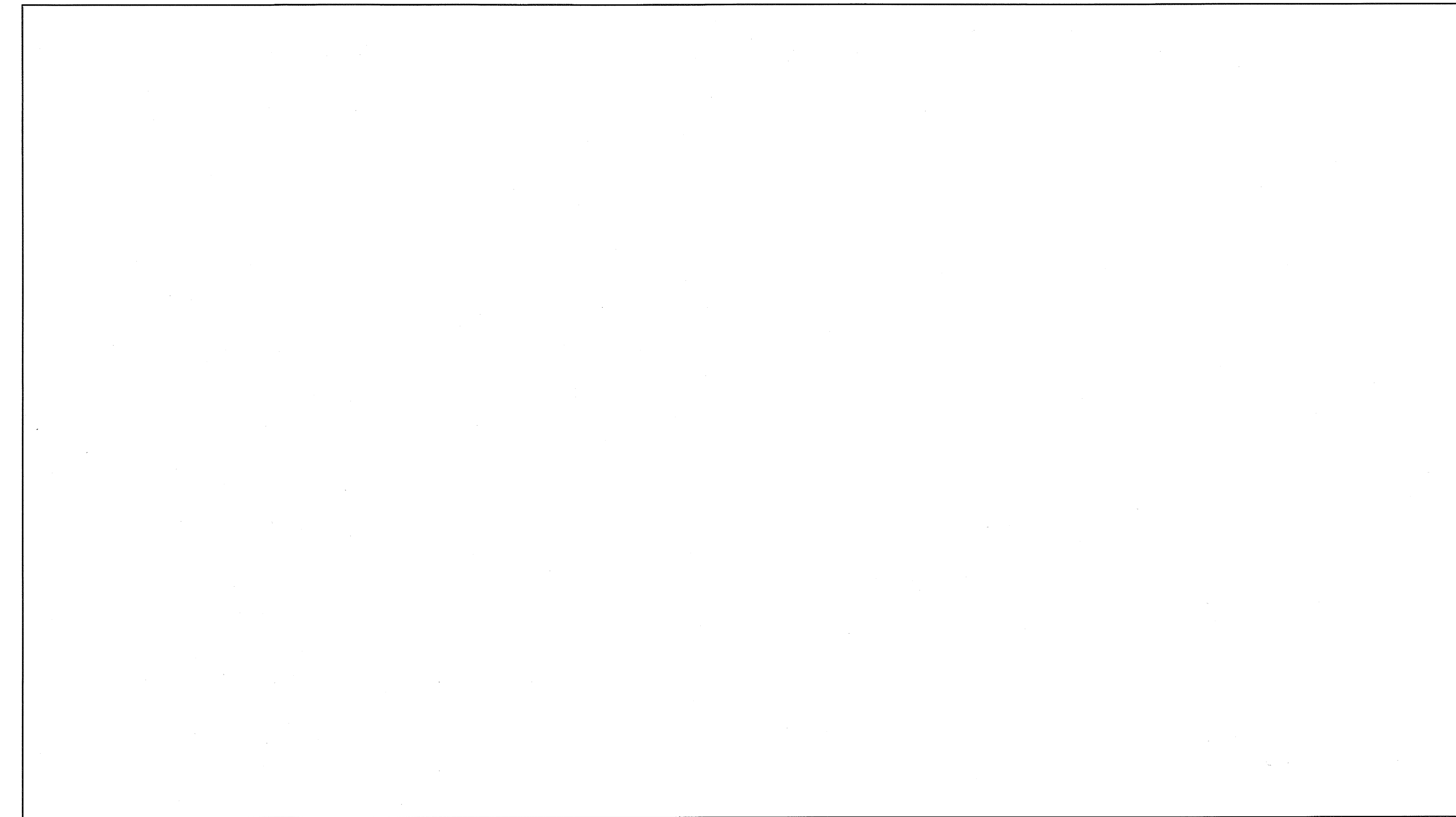


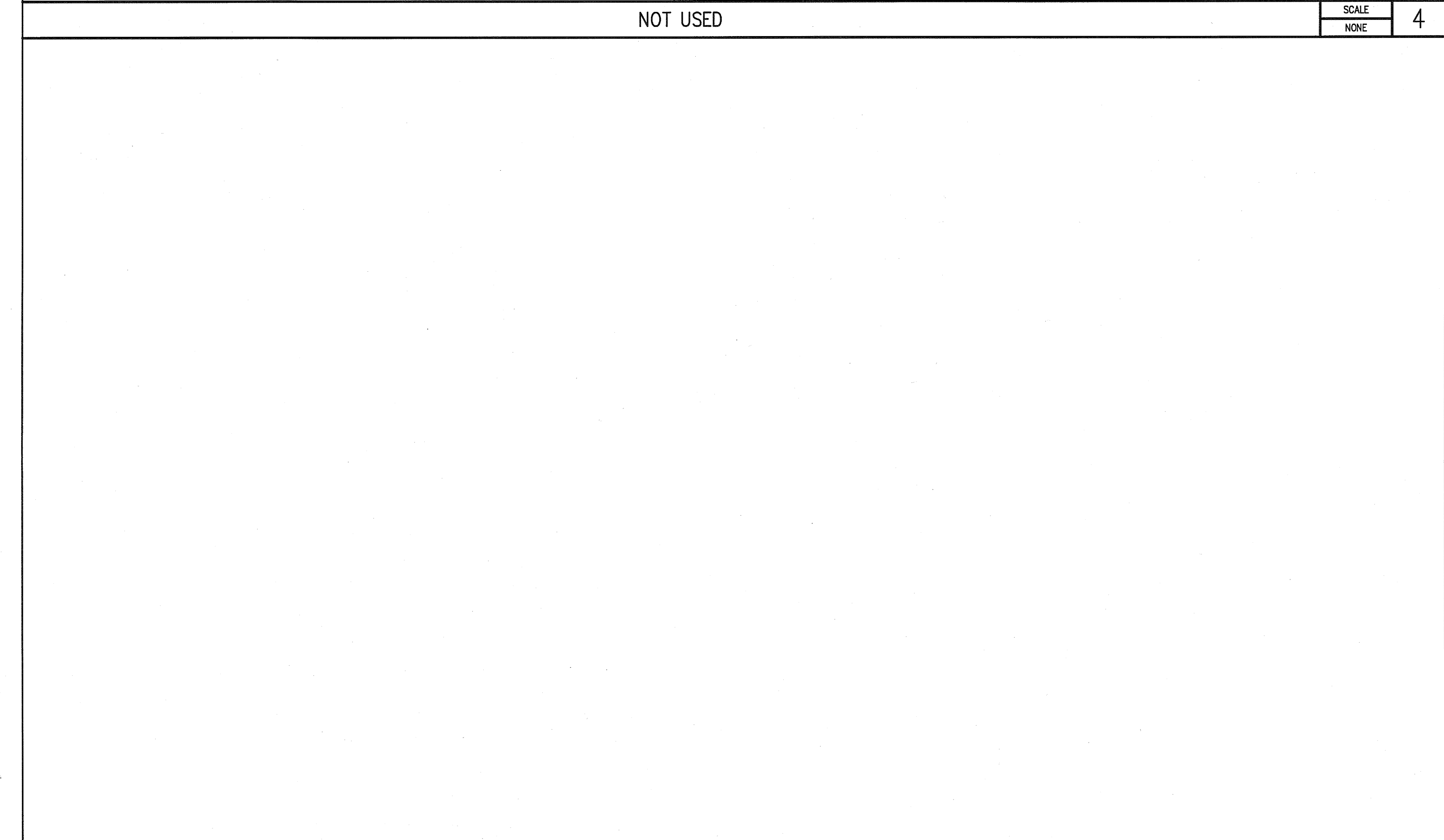
1/22/2008 4:52:10 PM
File Path:



NOT USED

SCALE
NONE

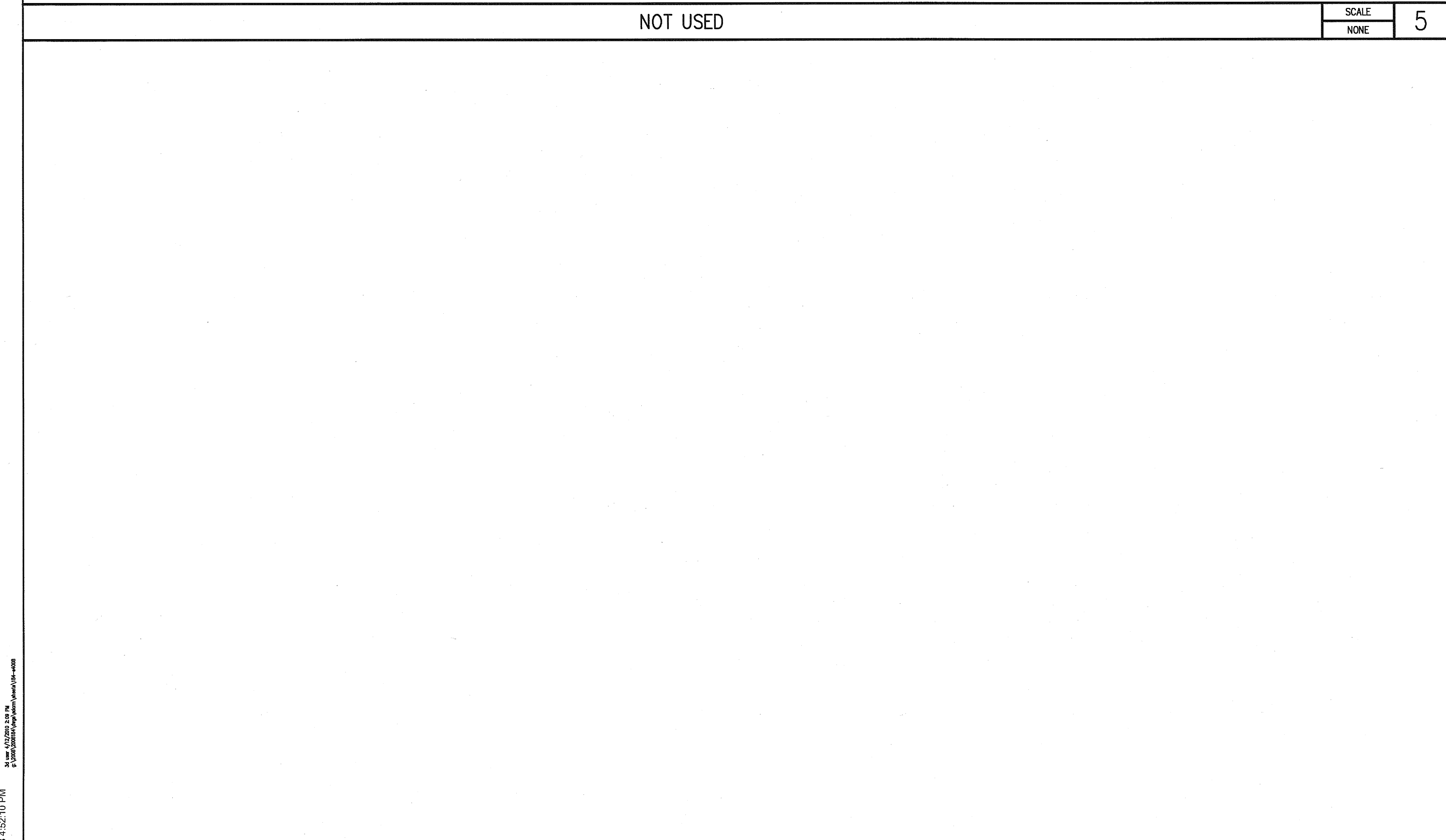
4



NOT USED

SCALE
NONE

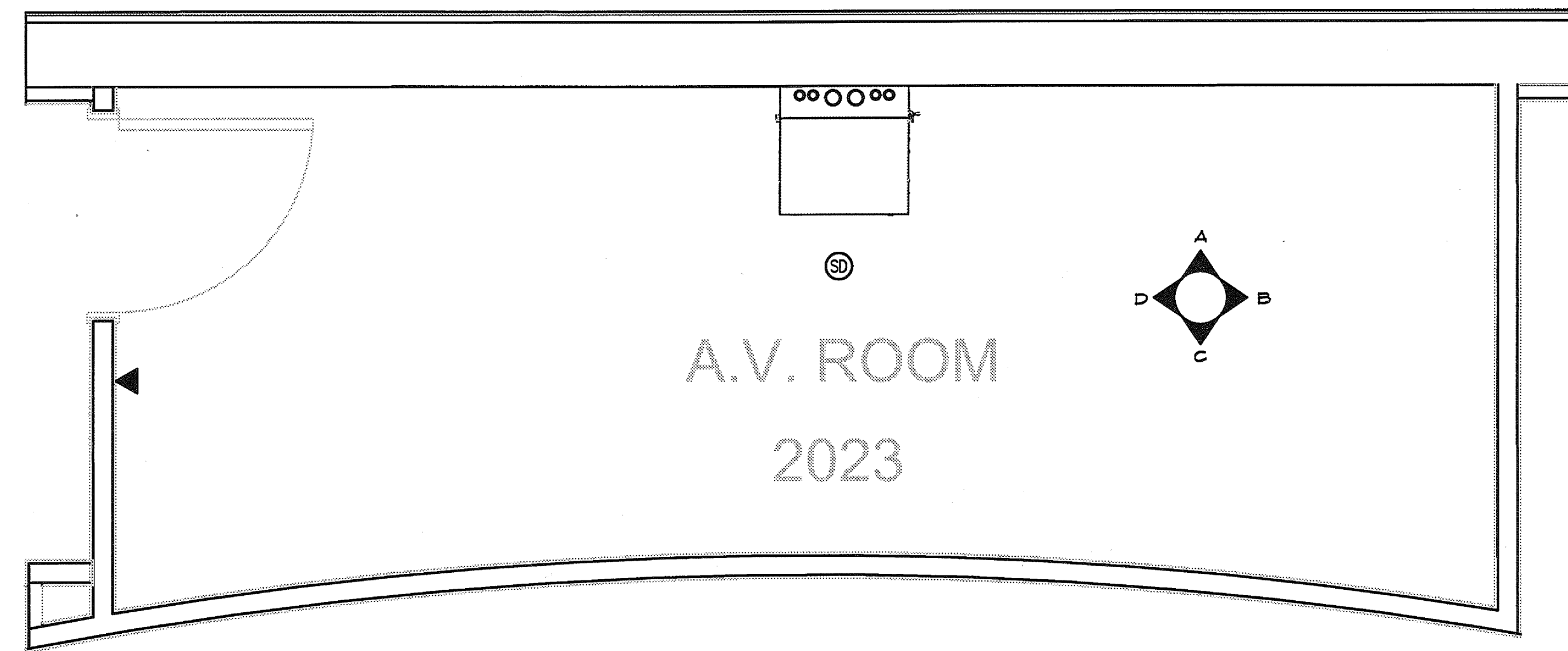
5



NOT USED

SCALE
NONE

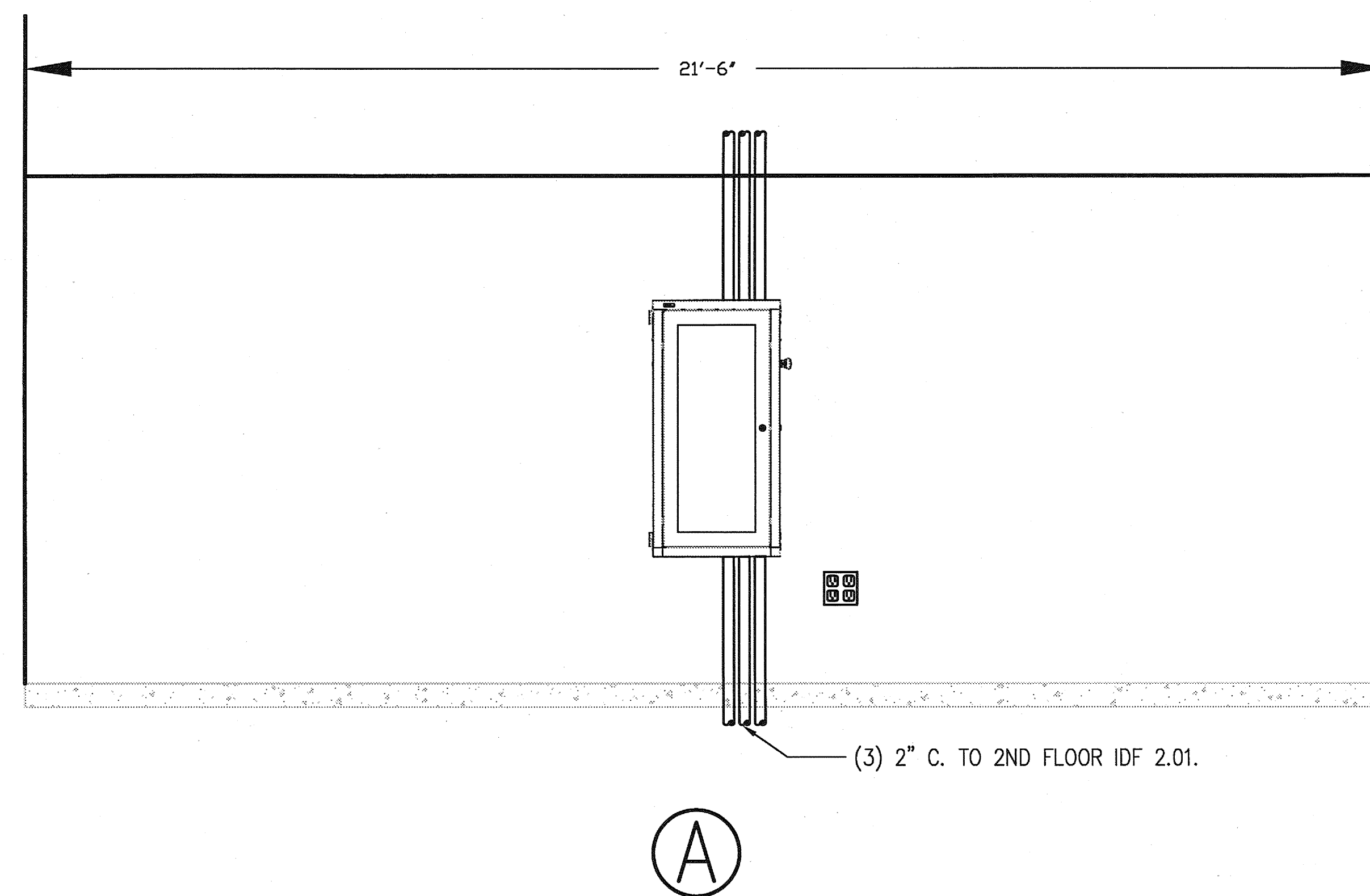
6



IDF 2.02 ENLARGED ROOM

SCALE
NONE

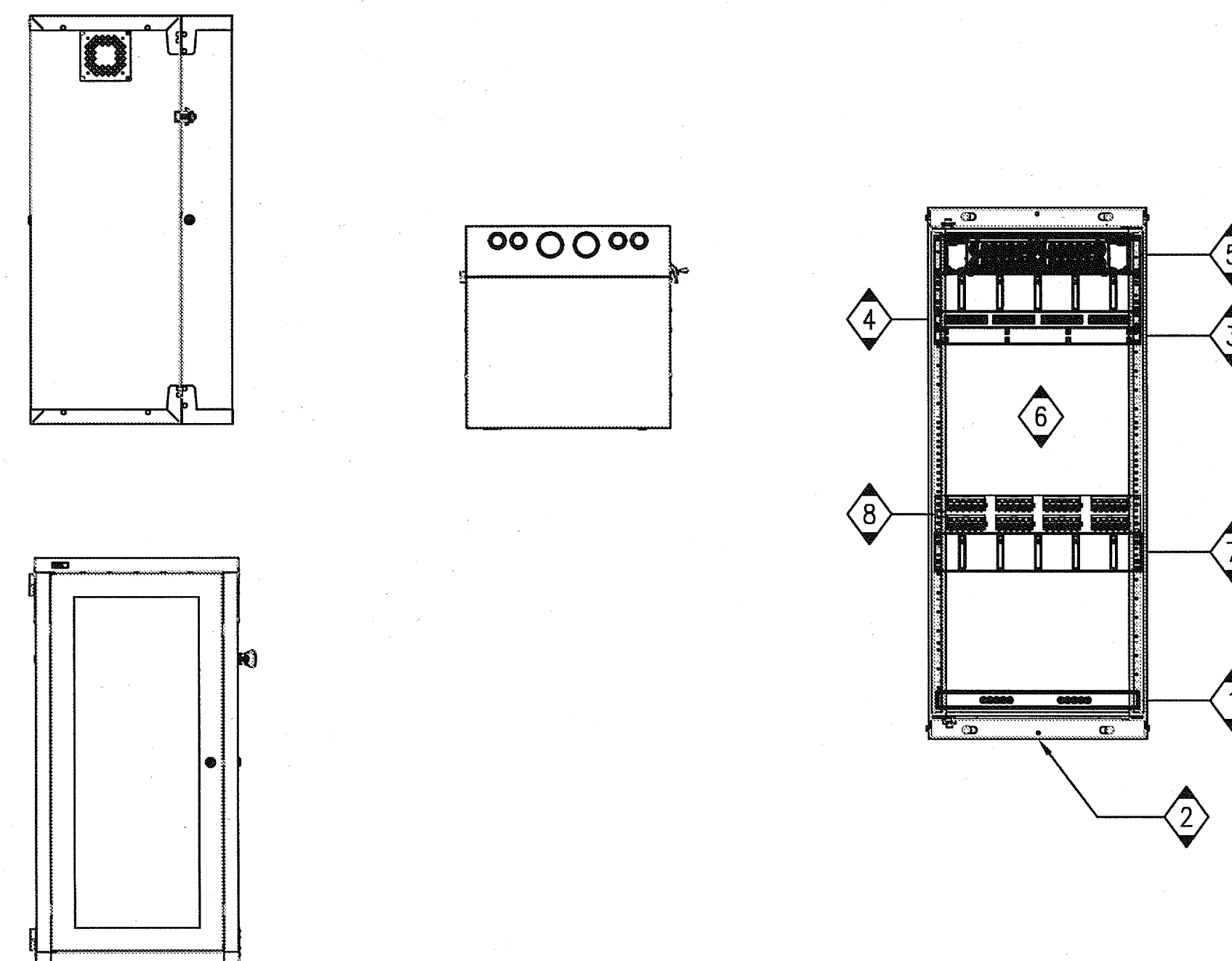
1



IDF 2.02 ELEVATION A'

SCALE
NONE

2



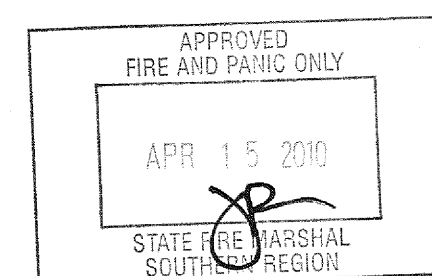
IDF 2.02 RACK ELEVATION

SCALE
NONE

3

GENERAL NOTES:
1. CONFIRM PANEL POSITIONING WITH OWNER PRIOR TO INSTALLATION.

- KEY NOTES:
- 1. HORIZONTAL RACK BUSBAR.
 - 2. TELECOM CABINET, 48" X 19" UON.
 - 3. 1 RMU HORIZONTAL WIRE MANAGER.
 - 4. 24-PORT PATCH PANEL (1 RMU) FOR COPPER BACKBONE CABLE.
 - 5. 2 RMU FIBER OPTIC PATCH PANEL FOR FIBER BACKBONE CABLE.
 - 6. CUSTOMER PROVIDED AND INSTALLED EQUIPMENT (TYPICAL).
 - 7. 2 RMU HORIZONTAL WIRE MANAGER (TYPICAL).
 - 8. 48-PORT PATCH PANEL (2 RMU'S) FOR STATION CABLE (TYPICAL).

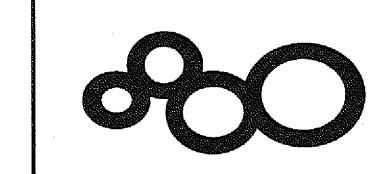


U.C.S.D.	
PRELIMINARY DRAWINGS	<input type="checkbox"/>
PROGRESS DRAWINGS	<input type="checkbox"/>
REVIEW DRAWINGS	<input type="checkbox"/>
CONSTRUCTION DRAWINGS	<input checked="" type="checkbox"/>

ISSUED FOR DATE	
Pre-Schematic Design	07/14/2008
Schematic Design	07/28/2008
BID PK #1	10/08/2008
50% Progress	10/24/2008
BID PK #1 80 CD	12/01/2008
BID PK #1 100 CD	02/16/2009
BID PK #2 100 CD	03/26/2009
100% CD	05/06/2009
CD 4	01/07/2010
COB 1	02/26/2010
COB 2	02/26/2010
CD 4	04/15/2010

SANFORD CONSORTIUM FOR REGENERATIVE MEDICINE

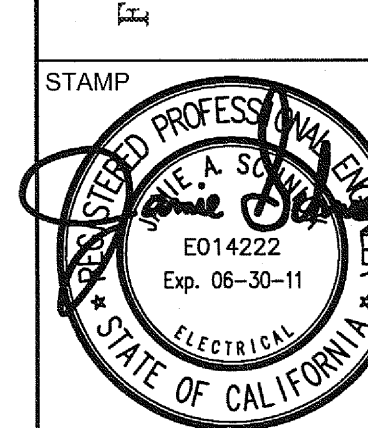
2880 TORREY PINES SCENIC DRIVE
LA JOLLA, CALIFORNIA 92037



CONSULTANT
Davis Davis Architects
2880 Torrey Pines Scenic Drive
La Jolla, CA 92037
Tel: 858.597.1655
Fax: 858.597.1656
www.davisdavis.com

Sanford/Pharmas Consortium LLC
4444 Camino del Rio South
San Diego, CA 92108
Tel: 619.594.1111
Fax: 619.594.1112

FENTRESS ARCHITECTS
401 Broadway, Suite 200
San Diego, CA 92101
Tel: 619.594.1111
Fax: 619.594.1112
www.fentress.com



SHEET NAME
ELECTRICAL TELECOM IDF
ENLARGED PLANS
DRAWN BY: Author
PROJECT #: 200725.000
SHEET NUMBER

E4008