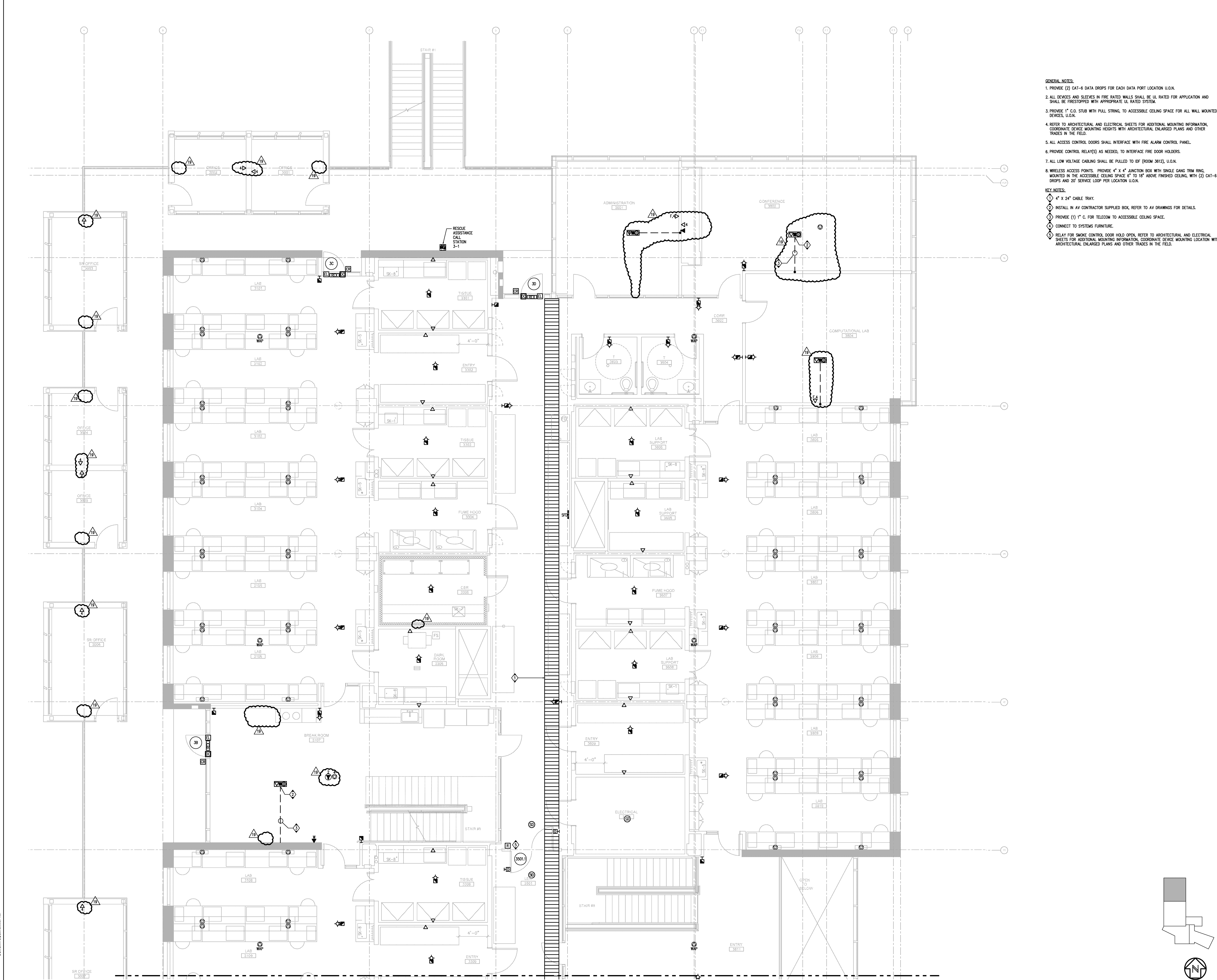


1/22/2008 4:42:10 PM
F:\Projects\200725\000\Drawings\01\01-01-01.dwg
File Path



FOR CONTINUATION SEE SHEET E4232

PARTIAL SIGNAL THIRD FLOOR PLAN - ZONE 1

Warning: It is a violation of the law for any person, unless acting under the direction of a licensed architect, to alter an item in any way. If an item in this document is altered, the altering architect, if other than the architect of record, shall affix the item his seal and the notation "altered by" followed by his signature and the date of such alteration, and the specific description of the alteration.

- GENERAL NOTES:**
1. PROVIDE (2) CAT-6 DATA DROPS FOR EACH DATA PORT LOCATION U.O.N.
 2. ALL DEVICES AND SLEEVES IN FIRE RATED WALLS SHALL BE UL RATED FOR APPLICATION AND SHALL BE FIRESTOPPED WITH APPROPRIATE UL RATED SYSTEM.
 3. PROVIDE 1" C.O. STUB WITH PULL STRING, TO ACCESSIBLE CEILING SPACE FOR ALL WALL MOUNTED DEVICES U.O.N.
 4. REFER TO ARCHITECTURAL AND ELECTRICAL SHEETS FOR ADDITIONAL MOUNTING INFORMATION, COORDINATE DEVICE MOUNTING HEIGHTS WITH ARCHITECTURAL ENLARGED PLANS AND OTHER TRADES IN THE FIELD.
 5. ALL ACCESS CONTROL DOORS SHALL INTERFACE WITH FIRE ALARM CONTROL PANEL.
 6. PROVIDE CONTROL RELAY(S) AS NEEDED, TO INTERFACE FIRE DOOR HOLDERS.
 7. ALL LOW VOLTAGE CABLING SHALL BE PULLED TO IDF (ROOM 3612), U.O.N.
 8. WIRELESS ACCESS POINTS: PROVIDE 4" x 4" JUNCTION BOX WITH SINGLE GANG TBM RING, MOUNTED IN THE ACCESSIBLE CEILING SPACE 6" TO 18" ABOVE FINISHED CEILING, WITH (2) CAT-6 DROPS AND 20' SERVICE LOOP PER LOCATION U.O.N.
- KEY NOTES:**
- ① 4" x 24" CABLE TRAY.
 - ② INSTALL IN AV CONTRACTOR SUPPLIED BOX, REFER TO AV DRAWINGS FOR DETAILS.
 - ③ PROVIDE (1) 1" C. FOR TELECOM TO ACCESSIBLE CEILING SPACE.
 - ④ CONNECT TO SYSTEMS FURNITURE.
 - ⑤ RELAY FOR SMOKE CONTROL DOOR HOLD OPEN, REFER TO ARCHITECTURAL AND ELECTRICAL SHEETS FOR ADDITIONAL MOUNTING INFORMATION, COORDINATE DEVICE MOUNTING LOCATION WITH ARCHITECTURAL ENLARGED PLANS AND OTHER TRADES IN THE FIELD.

COPYRIGHT ©
FENTRESS ARCHITECTS

ISSUED FOR	DATE
Pre-Schematic Design	07/14/2008
Schematic Design	07/28/2008
BID PK #1	10/08/2008
50% Progress	10/24/2008
BID PK #1 80 CD	12/01/2008
BID PK #1 100 CD	02/16/2009
BID PK #2 100 CD	03/26/2009
100% CD	05/08/2009
ADD REVIEW	08/08/2009
COB 1	02/26/2010
COB 2	02/26/2010
CD 4	04/15/2010
RVP PERMIT	05/05/2010
ASIM008 R	07/01/2010
ASIM009	07/06/2010
ASIM015	07/09/2010
ASIM004	07/12/2010
ASIM005	07/19/2010
ASIM010	08/13/2010

SANFORD CONSORTIUM FOR REGENERATIVE MEDICINE
2880 TORREY PINES SCENIC DRIVE
LA JOLLA, CALIFORNIA 92037

CONSULTANT
Architect
Architect
3070 Torrey Pines Drive, Suite 100
La Jolla, CA 92037
Tel: 858.592.1234
Fax: 858.592.1235
www.sanforcreg.org

CONSULTANT
Lanford/Phelps Consortium LLC
415 Broadway, Denver, CO 80202
Tel: 303.733.1234
Fax: 303.733.1235
www.lanfordphelps.com

ARCHITECTS
FENTRESS ARCHITECTS
415 Broadway, Denver, CO 80202
Tel: 303.733.1234
Fax: 303.733.1235
www.fentressarchitects.com

ARCHITECTS
DAVIS ARCHITECTS
301 First Avenue, San Mateo, CA 94401
Tel: 650.593.1234
Fax: 650.593.1235
www.davisarchitects.com

STAMP
REGISTERED PROFESSIONAL ARCHITECT
No. 12345
Exp. 06-30-11
STATE OF CALIFORNIA

SHEET NAME
PARTIAL SIGNAL THIRD FLOOR
PLAN - ZONE 1

DRAWN BY: Author
PROJECT # 200725.000
SHEET NUMBER

E4231

SCALE
1/4" = 1'-0"

1