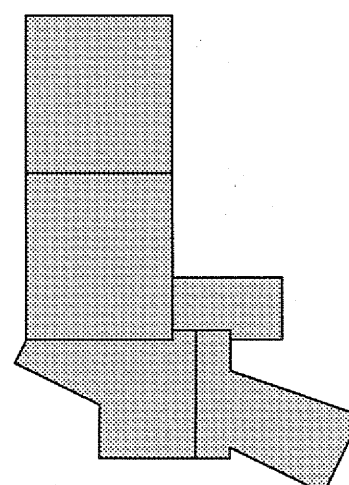


- GENERAL NOTES:
1. PROVIDE (2) CAT-6 DATA DROPS FOR EACH DATA PORT LOCATION U.O.N.
 2. ALL DEVICES AND SLEEVES IN FIRE RATED WALLS SHALL BE UL RATED FOR APPLICATION AND SHALL BE FIRESTOPPED WITH APPROPRIATE UL RATED SYSTEM.
 3. PROVIDE 1" C.O. STUB WITH PULL STRING, TO ACCESSIBLE CEILING SPACE FOR ALL WALL MOUNTED DEVICES, U.O.N.
 4. REFER TO ARCHITECTURAL AND ELECTRICAL SHEETS FOR ADDITIONAL MOUNTING INFORMATION, COORDINATE DEVICE MOUNTING HEIGHTS WITH ARCHITECTURAL ENLARGED PLANS AND OTHER TRADES IN THE FIELD.
 5. ALL ACCESS CONTROL DOORS SHALL INTERFACE WITH FIRE ALARM CONTROL PANEL.
 6. PROVIDE CONTROL RELAY(S) AS NEEDED, TO INTERFACE FIRE DOOR HOLDERS.
 7. ALL LOW VOLTAGE CABLING SHALL BE PULLED TO IDF (ROOM 4612), U.O.N.
 8. WIRELESS ACCESS POINTS: PROVIDE 4" x 4" JUNCTION BOX WITH SINGLE GANG TRIM RING, MOUNTED IN THE ACCESSIBLE CEILING SPACE 6" TO 18" ABOVE FINISHED CEILING, WITH (2) CAT-6 DROPS AND 20' SERVICE LOOP PER LOCATION U.O.N.

U.C.S.D.	
PRELIMINARY DRAWINGS	<input type="checkbox"/>
PROGRESS DRAWINGS	<input type="checkbox"/>
REVIEW DRAWINGS	<input type="checkbox"/>
CONSTRUCTION DRAWINGS	<input checked="" type="checkbox"/>



FOR CONTINUATION SEE SHEET E4252

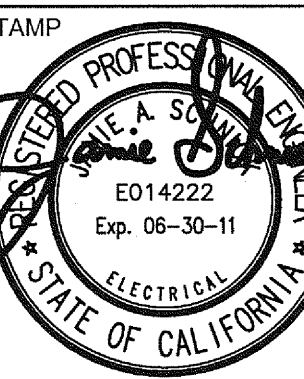
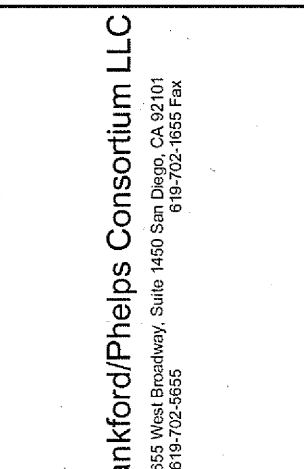
SIGNAL PARTIAL ROOF PLAN - ZONE 1

SCALE
1/4" = 1'-0"

1

SANFORD CONSORTIUM FOR REGENERATIVE MEDICINE

2880 TORREY PINES SCENIC DRIVE
LA JOLLA, CALIFORNIA 92037



SHEET NAME
SIGNAL PARTIAL ROOF PLAN -
ZONE 1

DRAWN BY: Author
PROJECT #: 200725.000
SHEET NUMBER

E4251