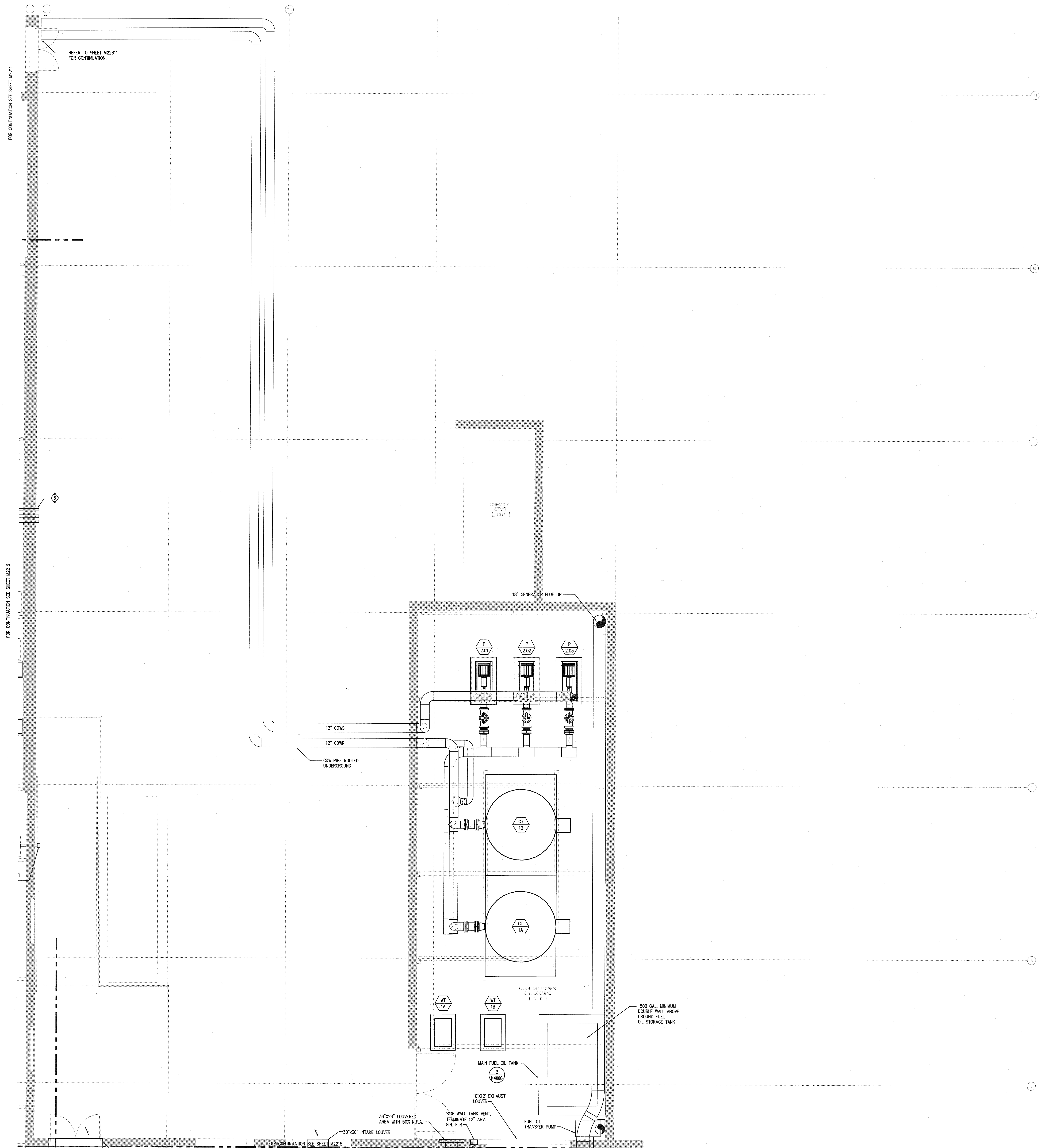


11/27/2008 4:52:10 PM
C:\Users\jphillips\Documents\Sanford\Sanford.mxd



REFER TO SHEET M22011
FOR CONTINUATION.

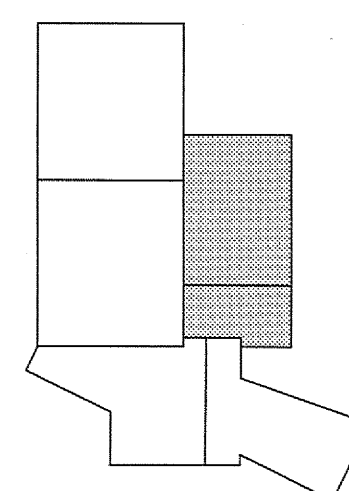
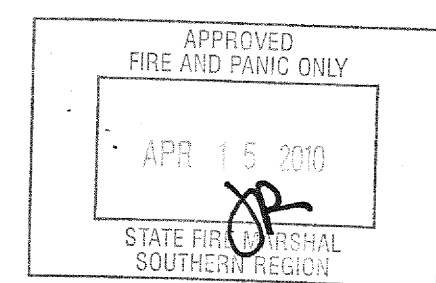
FOR CONTINUATION SEE SHEET M221

FOR CONTINUATION SEE SHEET M222

FOR CONTINUATION SEE SHEET M2210

PARTIAL MECHANICAL FIRST FLOOR PLAN - ZONE 5

U.C.S.D.	
PRELIMINARY DRAWINGS	<input type="checkbox"/>
PROGRESS DRAWINGS	<input type="checkbox"/>
REVIEW DRAWINGS	<input type="checkbox"/>
CONSTRUCTION DRAWINGS	<input checked="" type="checkbox"/>



SCALE
1/4" = 1'-0"

1

ISSUED FOR DATE	
Pre-Schematic Design	07/14/2008
Schematic Design	07/28/2008
BID PK #1	10/06/2008
50% Progress	10/24/2008
BID PK #1 80 CD	12/01/2008
BID PK #1 100 CD	02/18/2009
BID PK #2 100 CD	03/26/2009
100% CD	05/08/2009
CD 4	01/07/2010
CD 1	02/26/2010
CD 2	02/26/2010
CD 4	04/15/2010

SANFORD CONSORTIUM FOR REGENERATIVE MEDICINE

2880 TORREY PINES SCENIC DRIVE
LA JOLLA, CALIFORNIA 92037



CONSULTANT
Xerth
Xerth Inc. San Diego, CA 92161
3030 La Jolla Village Drive, Suite 200
San Diego, CA 92161
619.594.8888
www.xerth.com

Sanford/Phelps Consortium LLC
423 Broadway, Suite 200
San Diego, CA 92101
619.594.8888
www.sanfordphelps.com

FENTRESS ARCHITECTS
423 Broadway, Suite 200
San Diego, CA 92101
619.594.8888
www.fentress.com



SHEET NAME
PARTIAL MECHANICAL FIRST
FLOOR PLAN - ZONE 5
DRAWN BY: Author
PROJECT #: 200725-000
SHEET NUMBER

M2215