

SANFORD CONSORTIUM FOR REGENERATIVE MEDICINE

2880 TORREY PINES SCENIC DRIVE
LA JOLLA, CALIFORNIA 92037

CONSULTANT

Xmth

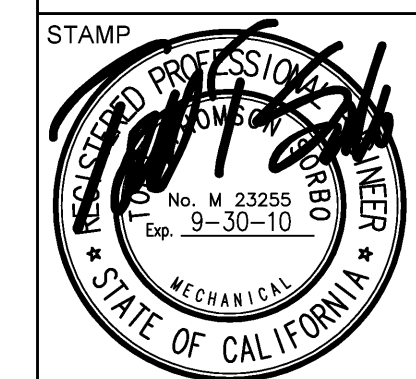
X-mth Inc./ San Diego - North
5670 Oberlin Dr.
San Diego, CA 92121
658.597.0555 | fax 658.597.0565

Xmth # 02081094

Lankford/Phelps Consortium LLC
600 West Broadway, Suite 1450 San Diego, CA 92101
619-732-6665 619-732-7665 Fax

DAVIS DAVIS
 ARCHITECTS
 3601 Fifth Avenue San Diego, CA 92103
 301/721-0000

DAVIS DAVIS
 ARCHITECTS
 421 Broadway, Denver, CO 80202
 301/721-0000



SHEET NAME
PARTIAL MECHANICAL
SECOND FLOOR PLAN - ZONE 1
DRAWN BY: Author
PROJECT #: 200725.000
SHEET NUMBER

M2221

--	--