

1/22/2025 4:22:10 PM  
P:\2025\250725\250725-000\250725-000.dwg  
File Path:

Warning: It is a violation of the law for any person, unless acting under the direction of a licensed architect, to alter an item in any way. If an item in this document is altered, the altering architect, if other than the architect of record, shall affix the item his seal and the notation "altered" followed by his signature and the date of such alteration, and the specific description of the alteration.

PARTIAL PLUMBING VIVARIUM PLAN - ZONE 3

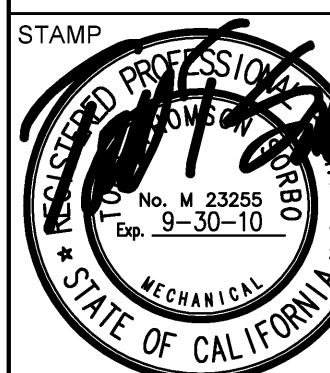
SCALE  
1/4" = 1'-0"

1

SHEET NAME  
PARTIAL PLUMBING VIVARIUM  
PLAN - ZONE 3

DRAWN BY: Author  
PROJECT # 200725.000  
SHEET NUMBER

P22B23

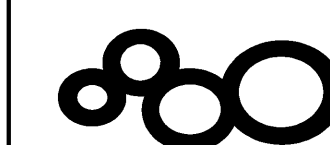


FENTRESS ARCHITECTS  
415 Broadway, Denver, CO 80202  
(303) 733-0888  
www.fentressarchitects.com

DAVIS ARCHITECTS  
2001 Fifth Avenue, San Diego, CA 92101  
(619) 594-1100  
www.davisarchitects.com

Lankford/Phelps Consortium LLC  
1000 Broadway, Suite 1000, San Diego, CA 92101  
(619) 594-1100  
www.lankfordphelps.com

CONSULTANT  
Xanthus  
Xanthus Engineering, Inc.  
3070 Decatur Rd.  
San Diego, CA 92108  
(619) 594-1100  
www.xanthuseng.com



SANFORD CONSORTIUM FOR REGENERATIVE MEDICINE  
2880 TORREY PINES SCENIC DRIVE  
LA JOLLA, CALIFORNIA 92037

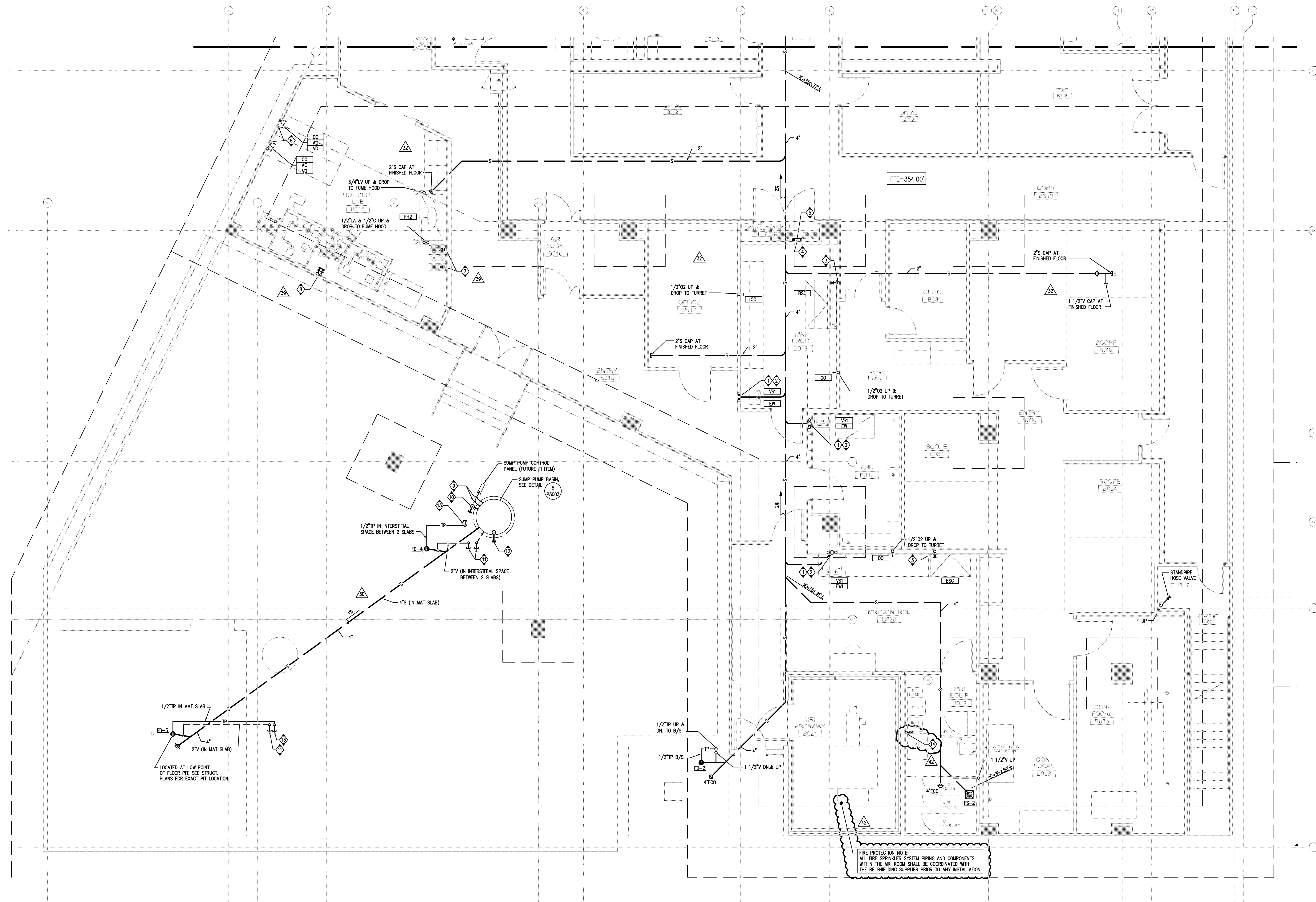
WORK ORDER NO. 431587

**RW 2909**

ISSUED FOR DATE	
BID PK #1	10/09/2008
20% Progress	10/24/2008
BID PK #1 80 CD	12/01/2008
BID PK #1 100 CD	02/16/2009
BID PK #2 100 CD	03/26/2009
100% CD	05/08/2009
CD 4	01/07/2010
CD 5	02/26/2010
CD 6	02/26/2010
CD 7	04/15/2010
CD 8	05/05/2010
CD 9	07/01/2010
CD 10	07/08/2010
CD 11	07/08/2010
CD 12	07/12/2010
CD 13	07/19/2010
CD 14	08/13/2010
CD 15	08/27/2010
CD 16	09/20/2010
CD 17	11/17/2010
CD 18	12/15/2010
CD 19	01/14/2011
CD 20	01/21/2011
CD 21	01/28/2011
CD 22	02/16/2011
CD 23	02/16/2011
CD 24	05/10/2011

KEY NOTES:

- 2" DOWN, 1 1/2" V UP.
- 1/2" CW AND 1/2" HW UP AND DROP TO SINK.
- 3/4" V UP AND DROP AT 96" AFF WITH SOV TO BIOSAFETY CABINET.
- 3/4" V UP AND DROP WITH SOV AND ON WALL AT 96" AFF FOR BOTTLED GASES VENDOR CONNECTION TO MANIFOLD, 1" ORV UP.
- 02 AUTOMATIC SWITCH OVER MANIFOLD, OWNER LEASED FROM BOTTLED GASES VENDOR. 120/1PH/60HZ, MANIFOLD SHALL HAVE 2 02 BOTTLES CONNECTED ON EACH SIDE OF MANIFOLD.
- 3/4" V, 1/2" L/A, AND 1/2" V UP AND DROP TO OUTLETS.
- 1/2" V AND ARGON UP AND DROP TO SOV ON WALL AT 96" AFF FOR BOTTLED GAS VENDOR CONNECTION TO MANIFOLD, MANIFOLD SHALL BE OWNER LEASED FROM BOTTLED GAS VENDOR.
- 1/2" V AND ARGON UP AND DROP EXPOSED ON WALL TO SOV AT 96" AFF. FINAL CONNECTIONS TO EQUIPMENT SHALL BE BY EQUIPMENT INSTALLER.
- (1) 3/4" CONDUIT (POWER) AND (1) 1" CONDUIT (CONTROLS) CAPPED AT 6" ABOVE FUTURE FINISHED FLOOR SLAB FOR FUTURE T.L. CONNECTIONS.
- 3" V CAPPED AT 6" ABOVE FUTURE FINISHED FLOOR SLAB FOR FUTURE T.L. CONNECTION.
- 2" V CAPPED AT 6" ABOVE FUTURE FINISHED FLOOR SLAB FOR FUTURE T.L. CONNECTION.
- 4" S CAPPED IN HORIZONTAL POSITION WITH BOTTOM OF PIPE AT 1" ABOVE TOP OF MAT SLAB.
- 1/2" TP CAPPED AT 6" ABOVE FUTURE FINISHED FLOOR SLAB FOR FUTURE T.L. CONNECTION.
- 1/2" L/A UP AND DROP ON WALL TO SOV WITH THREADED OUTLET AT 48" AFF FOR EQUIPMENT INSTALLER CONNECTION.



FIRE PROTECTION NOTE:  
ALL FIRE SPRINKLER SYSTEM PIPING AND COMPONENTS  
WITHIN THE MRI ROOM SHALL BE COORDINATED WITH  
THE RF SHIELDING SUPPLIER PRIOR TO ANY INSTALLATION.