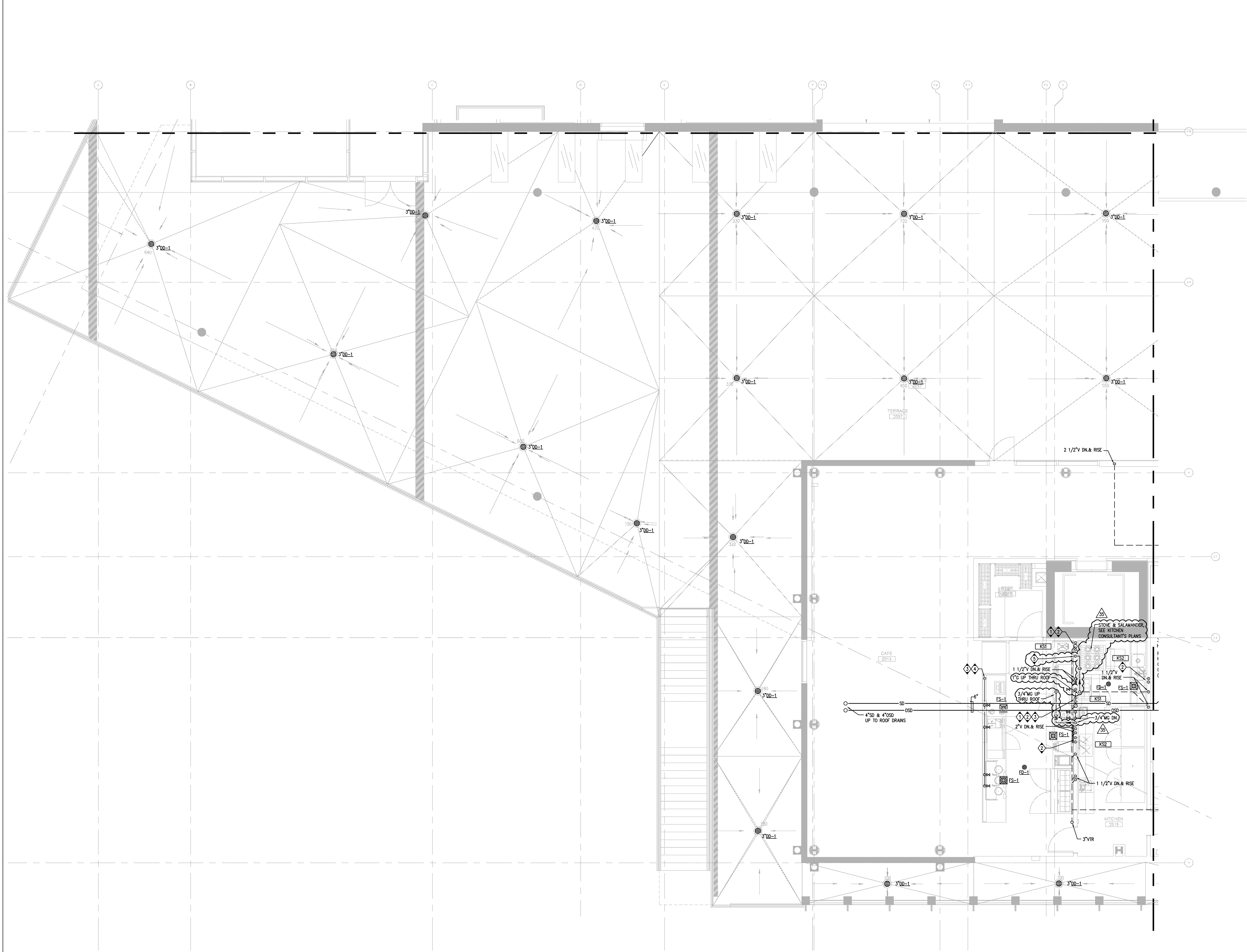


1/22/2016 4:22:10 PM  
P:\2012\2012\_03\_16\2012\_03\_16.dwg  
File Path:



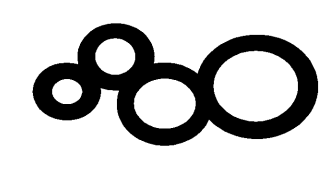
- KEY NOTES:
- 1 2\"/>

**RW 2909**

WORK ORDER NO. 431587

SANFORD CONSORTIUM FOR REGENERATIVE MEDICINE

2880 TORREY PINES SCENIC DRIVE  
LA JOLLA, CALIFORNIA 92037



CONSULTANT  
**xyth**  
x-yth Inc. for design team  
3071 Torrey Pines Rd.  
La Jolla, CA 92037  
Tel: 858.592.1234  
Fax: 858.592.1235  
www.xyth.com

Sanford/Phelps Consortium LLC  
10000 Sanford Drive, Suite 100  
San Diego, CA 92121  
Tel: 619.592.1234  
Fax: 619.592.1235  
www.sanfordphelps.com

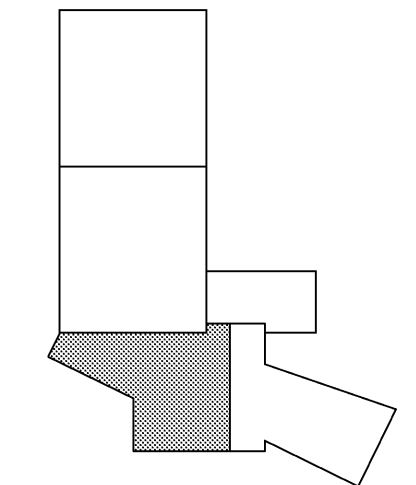
FENTRESS ARCHITECTS  
415 Broadway, Denver, CO 80202  
(303) 733-0000  
www.fentressarchitects.com



SHEET NAME  
PARTIAL PLUMBING SECOND  
FLOOR PLAN - ZONE 3  
DRAWN BY: Author  
PROJECT #: 200725.000  
SHEET NUMBER

P2223

APPROVED  
FLOOR PLAN ONLY  
03 16 2011  
DATE  
FENTRESS ARCHITECTS  
CONSTRUCTION SERVICES



SCALE  
1/4" = 1'-0"

1

PARTIAL PLUMBING SECOND FLOOR PLAN - ZONE 3

Warning: It is a violation of the law for any person, unless acting under the direction of a licensed architect, to alter an item in any way. If an item in this document is altered, the altering architect, if other than the architect of record, shall affix the item his seal and the notation "altered by" followed by his signature and the date of such alteration, and the specific description of the alteration.