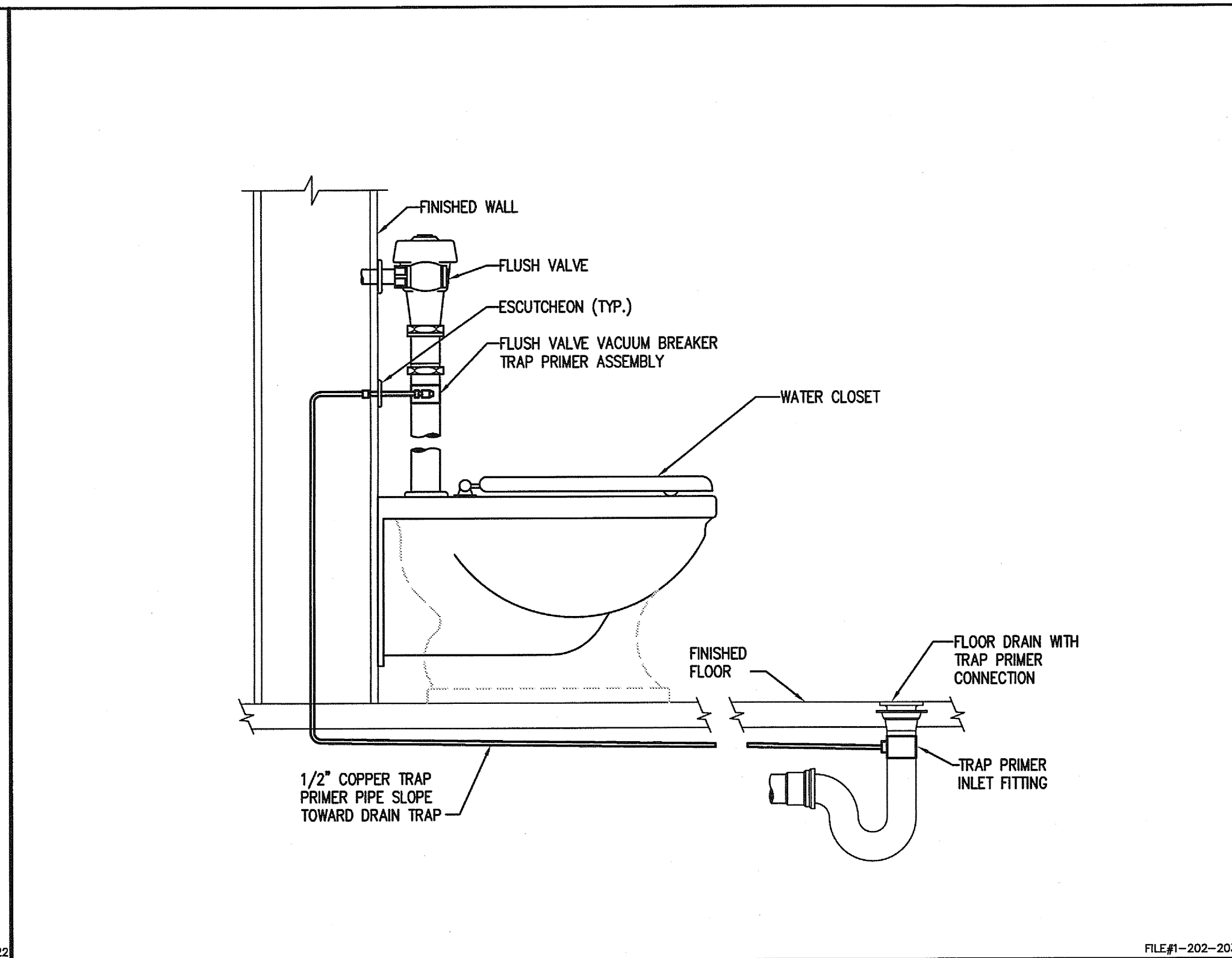
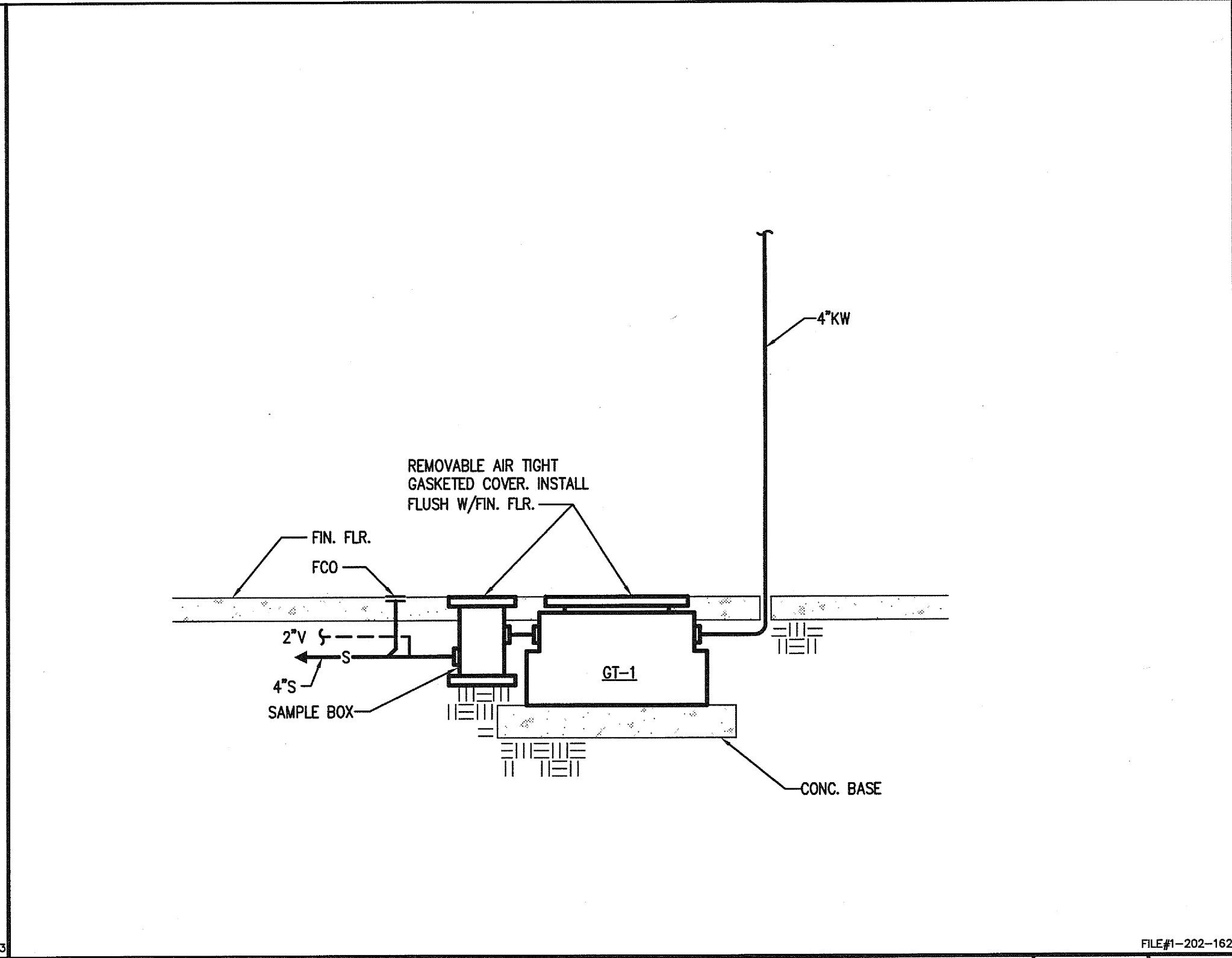


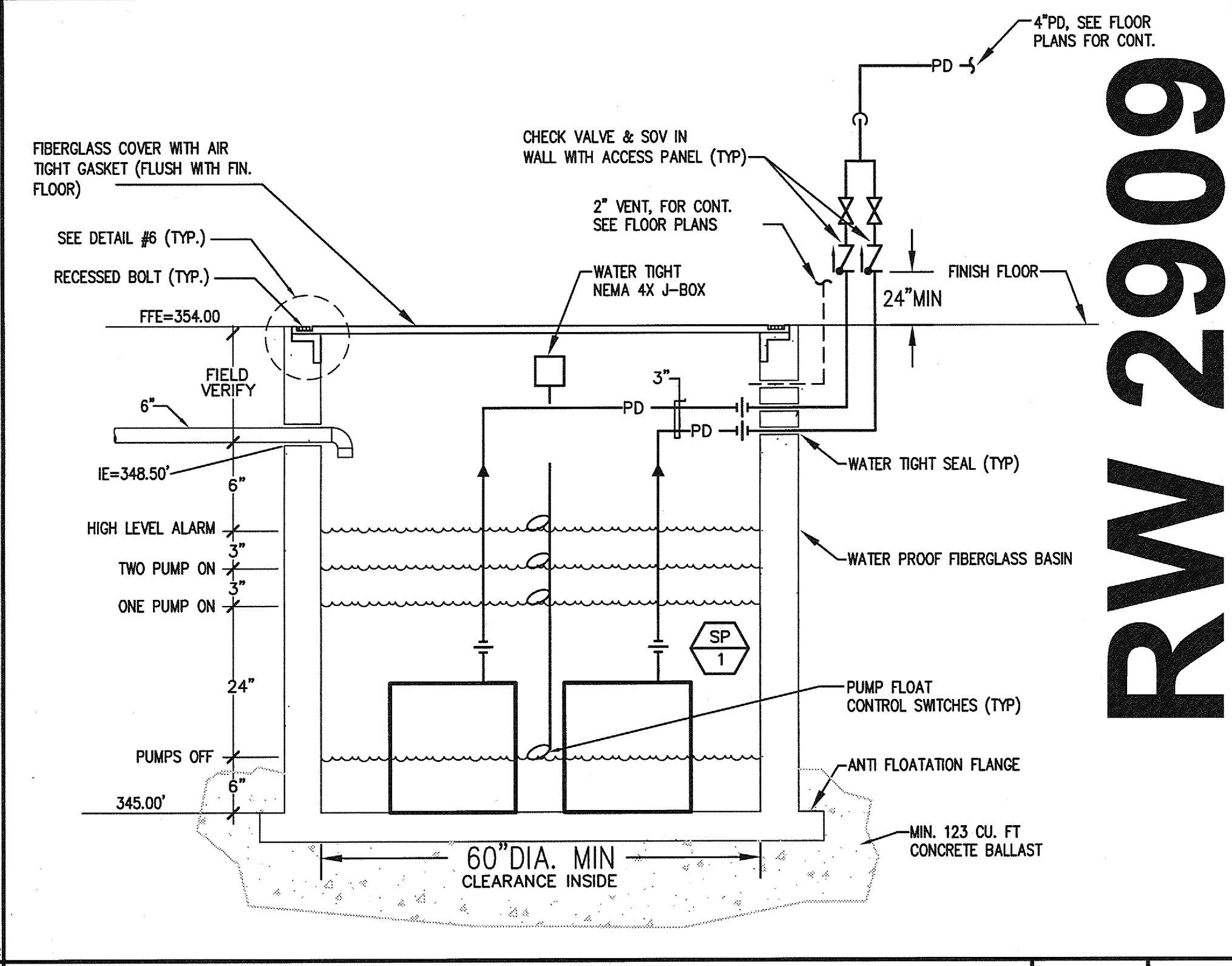
CLOTHES WASHER PIPING (WITH BOX)



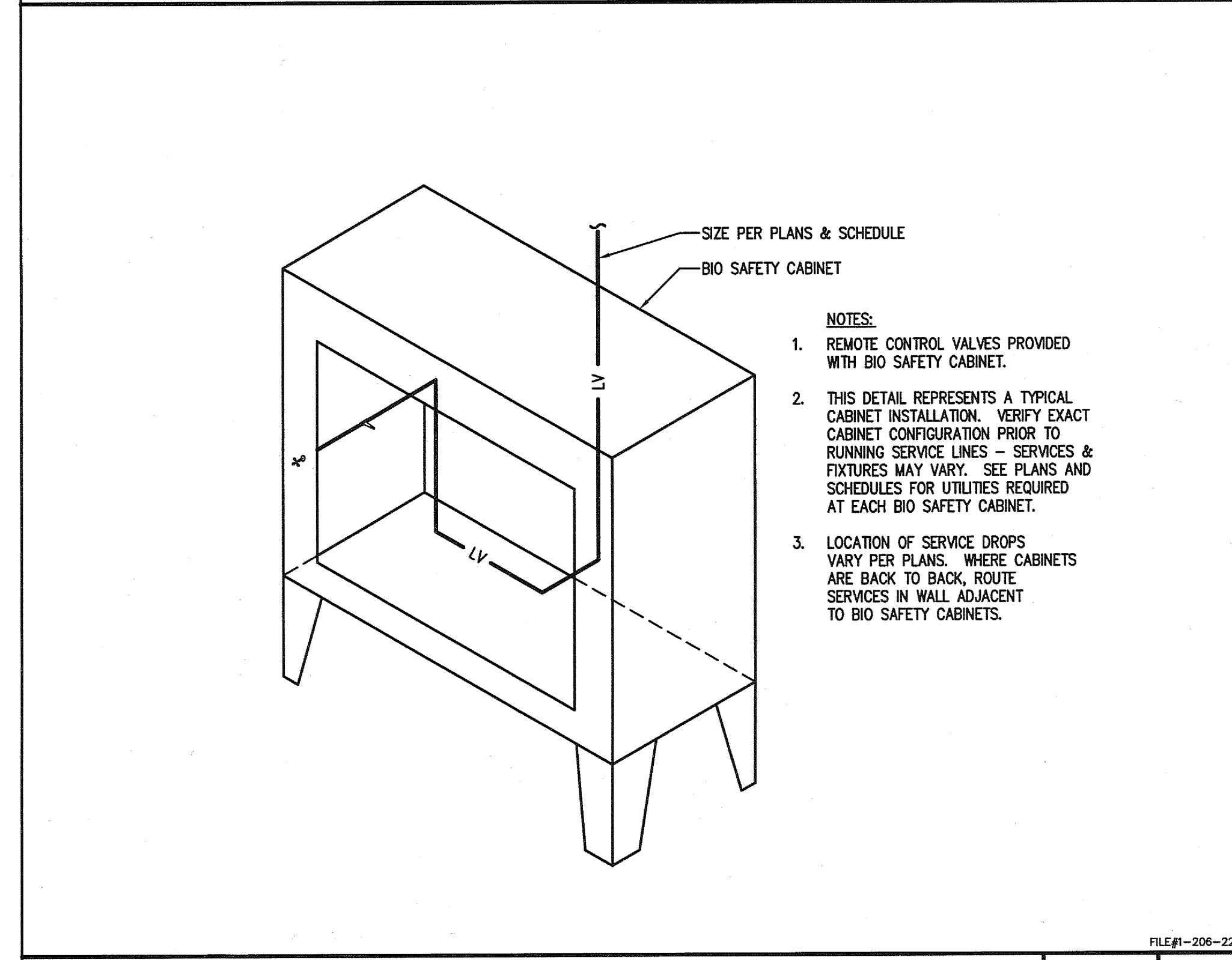
FLUSH VALVE TRAP PRIMER



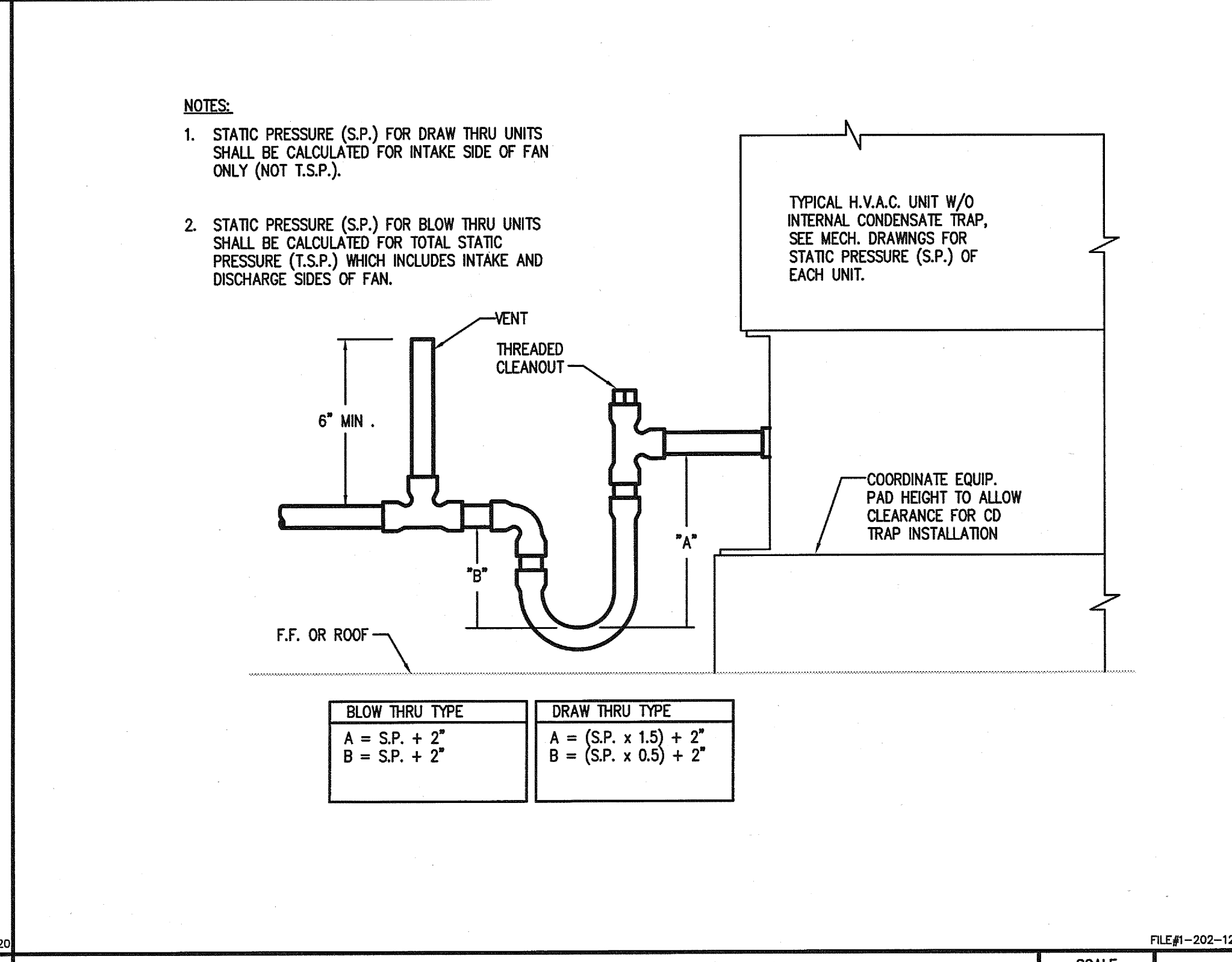
GREASE TRAP



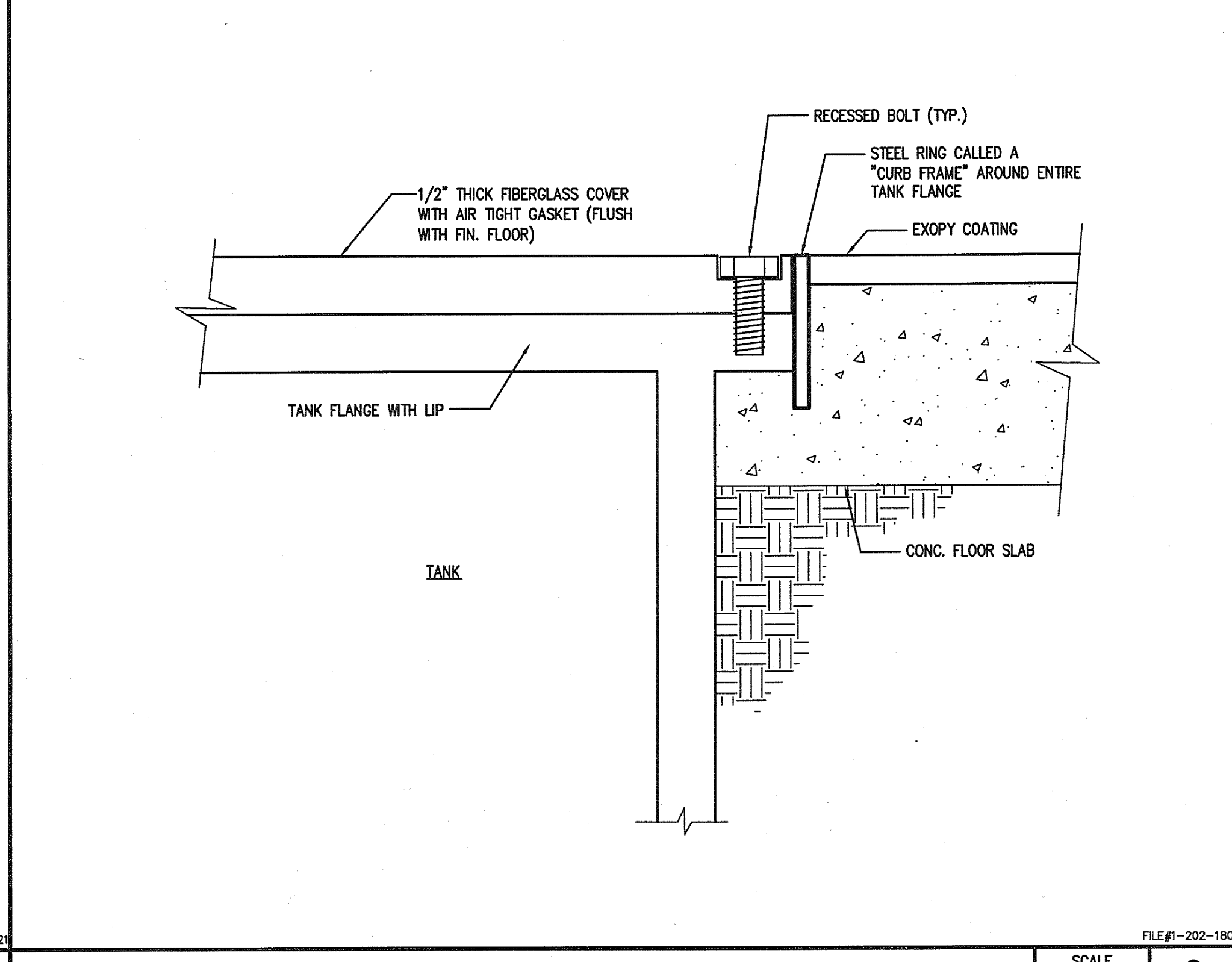
SEWER SUMP PUMP DETAIL



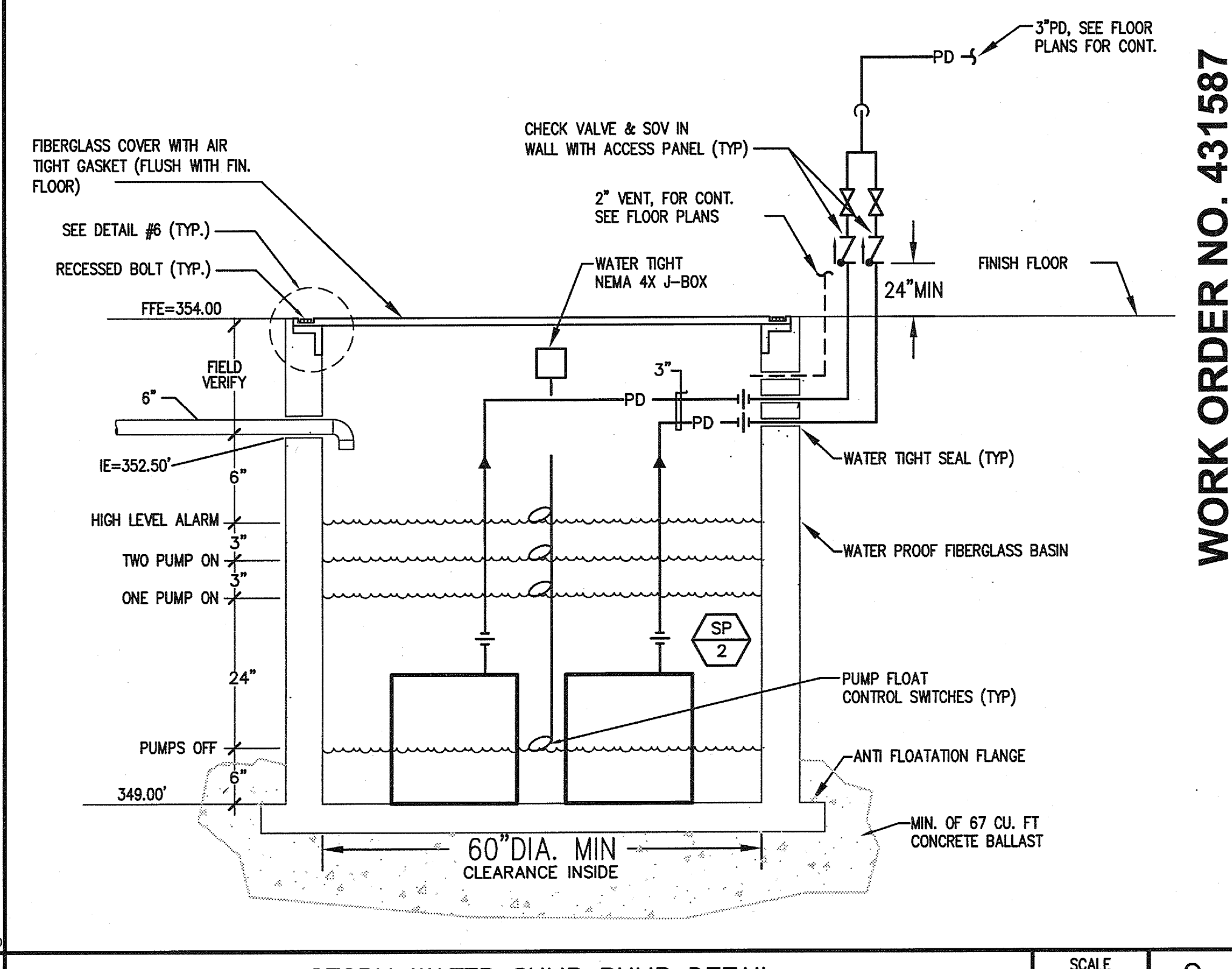
BIO SAFETY CABINET CONNECTIONS



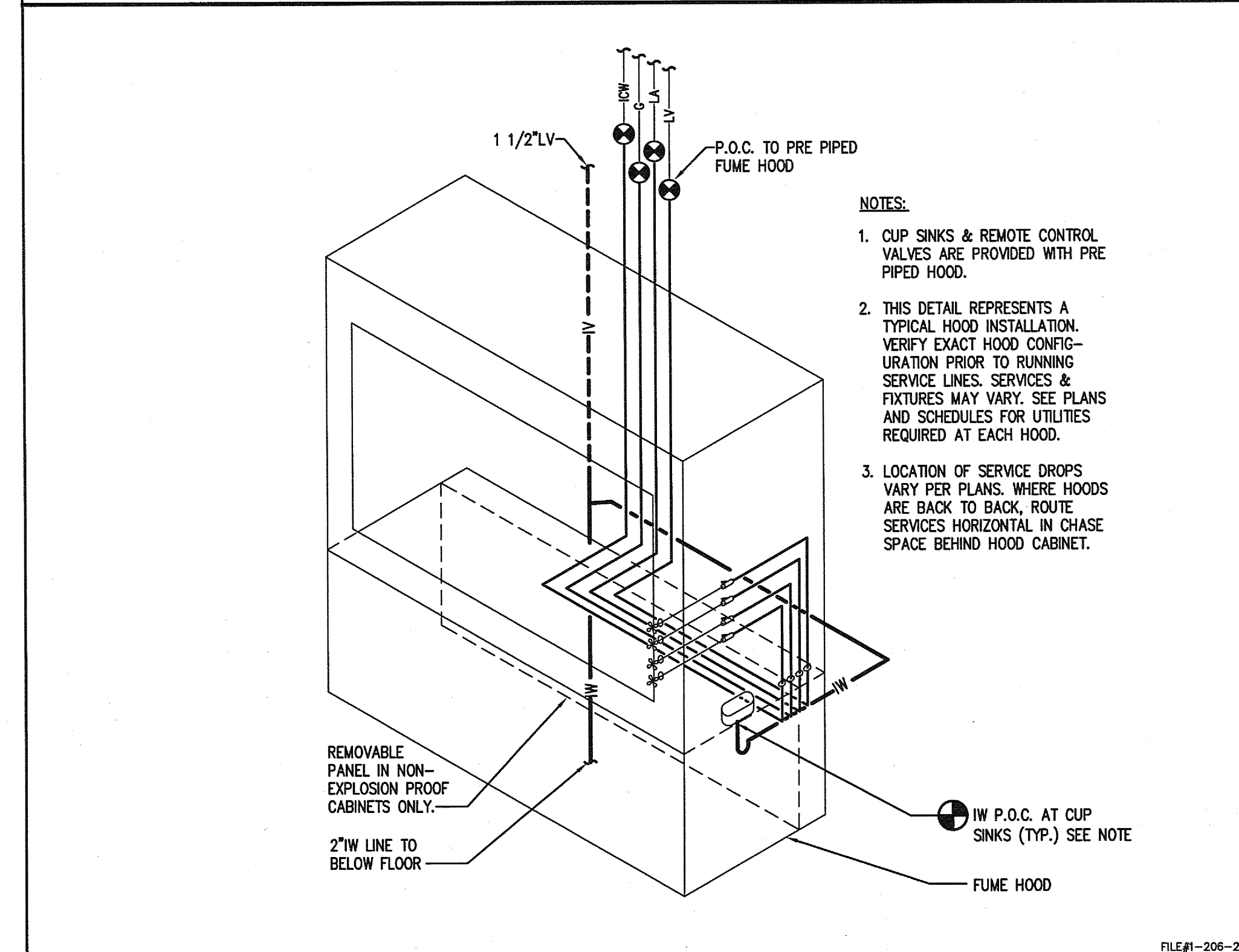
CONDENSATE DRAIN W/VENT AT AIR HANDLER



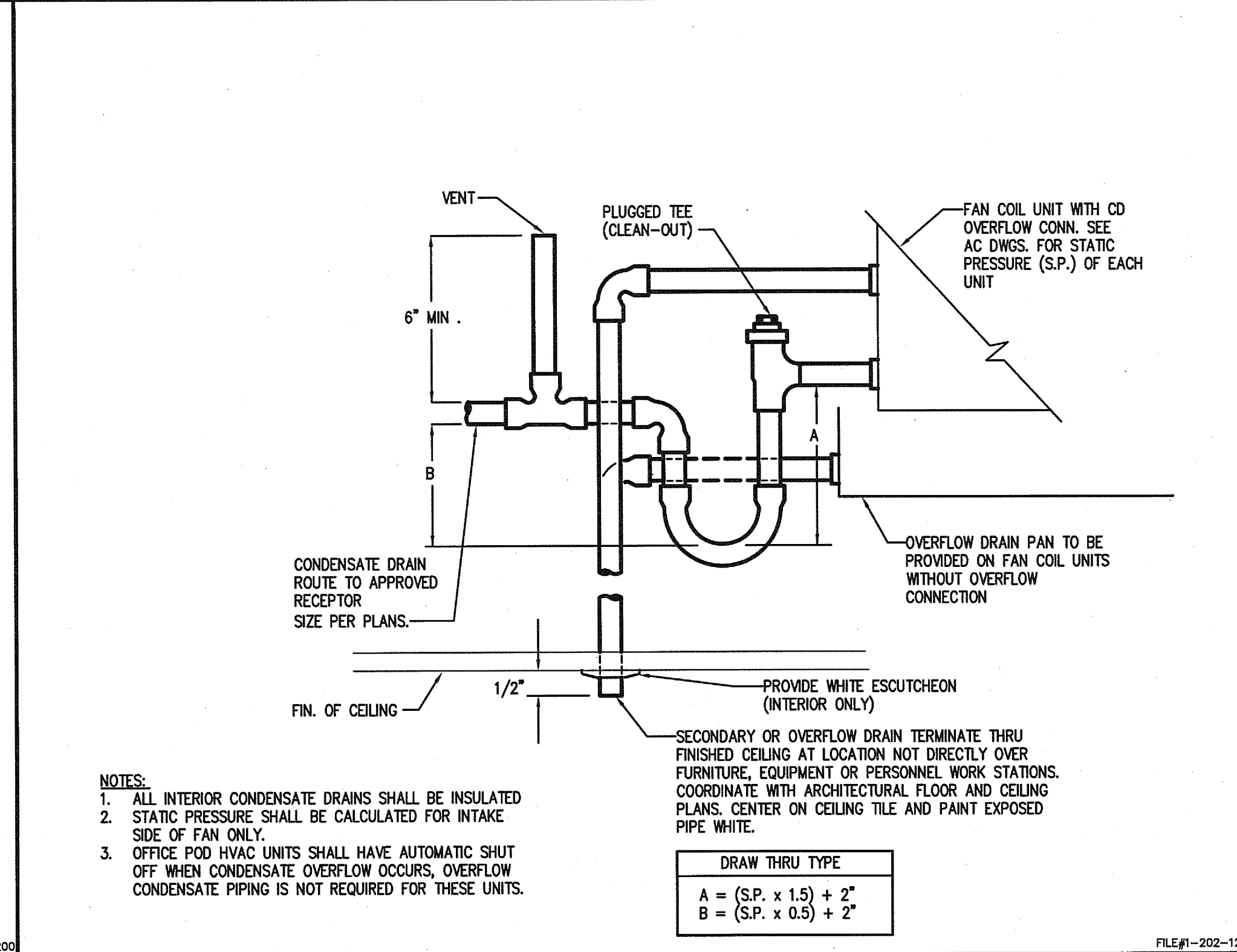
SUMP PUMP BASIN



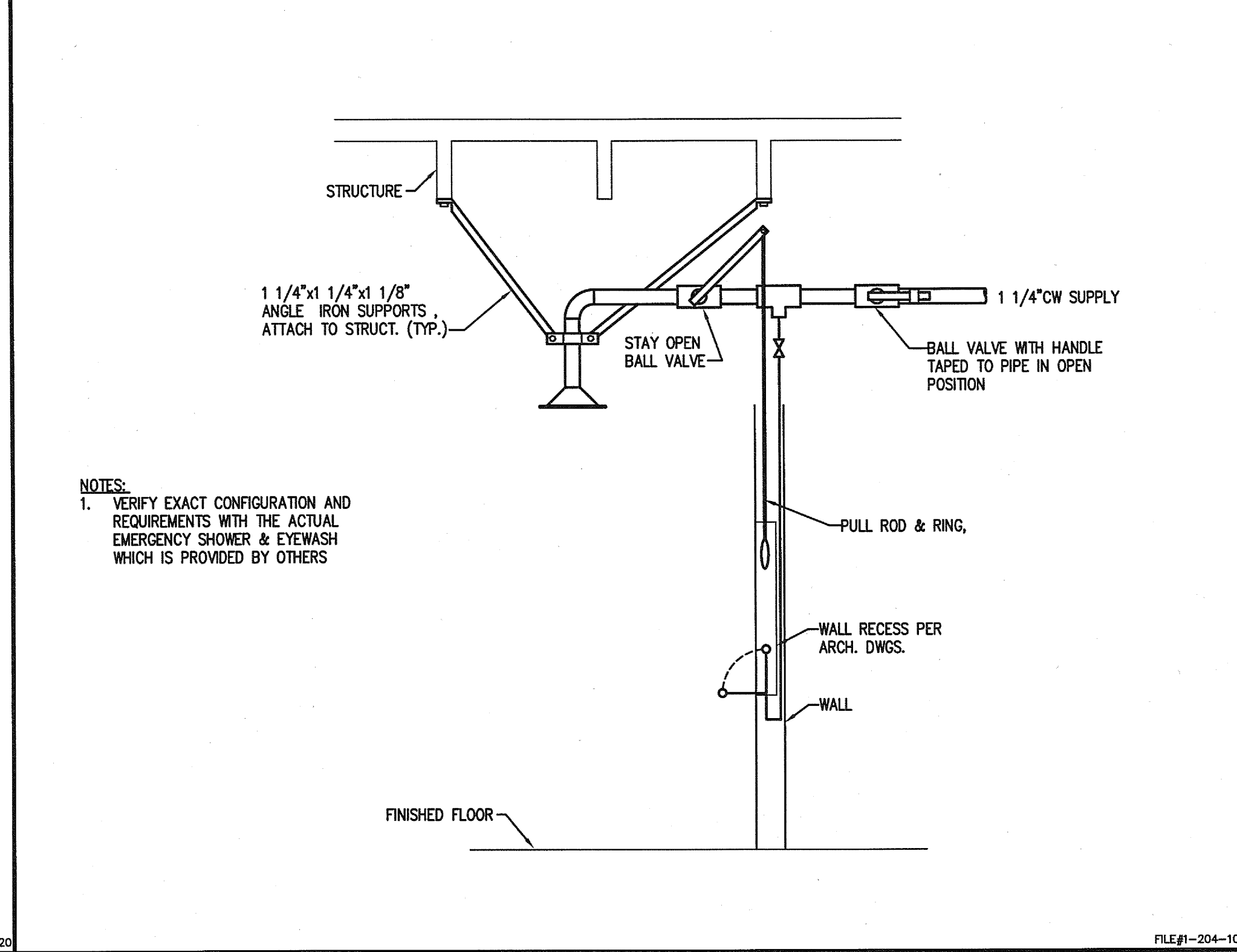
STORM WATER SUMP PUMP DETAIL



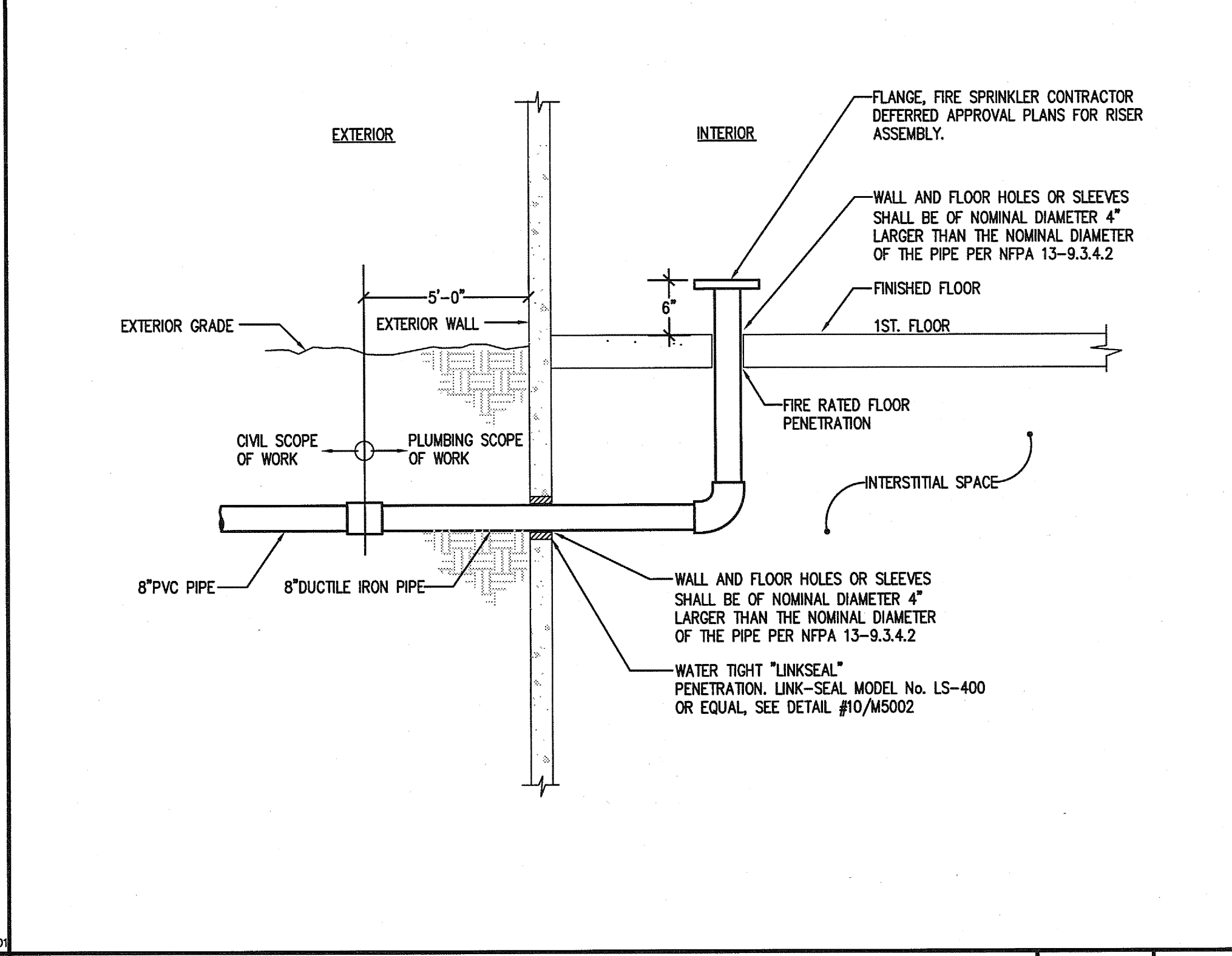
FUME HOOD CONNECTIONS



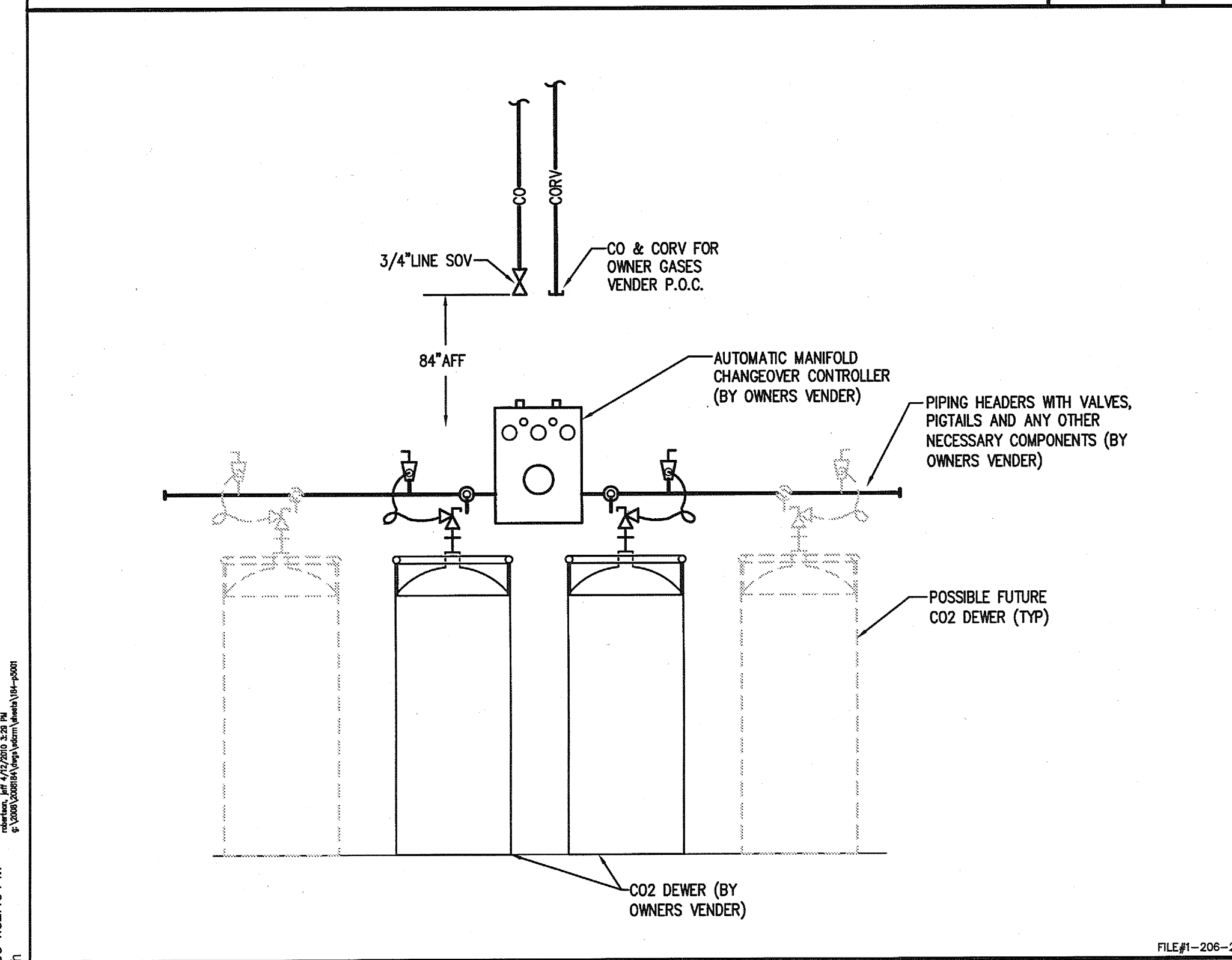
CONDENSATE DRAIN AT F.C.U.



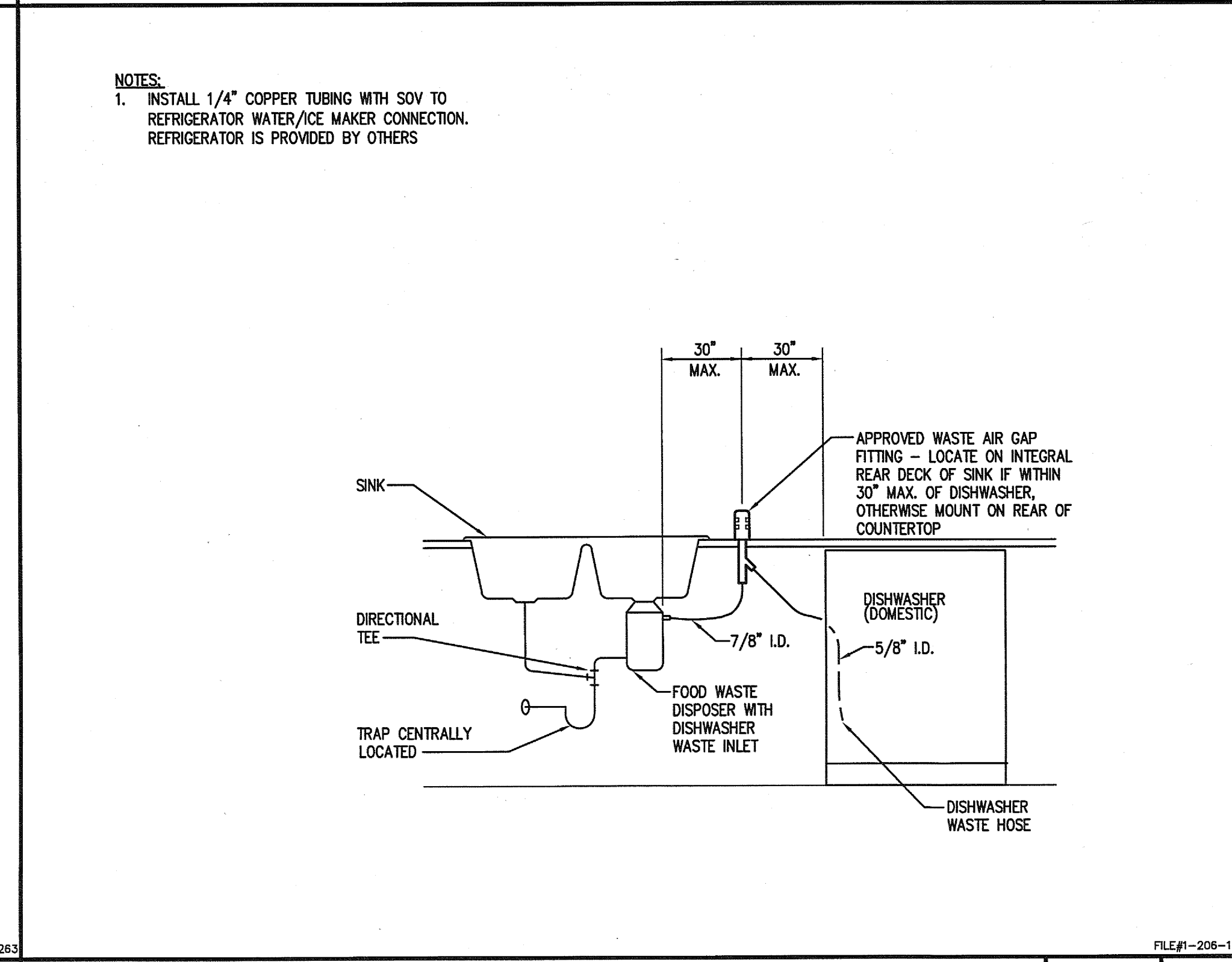
EMERGENCY SHOWER & EYEWASH



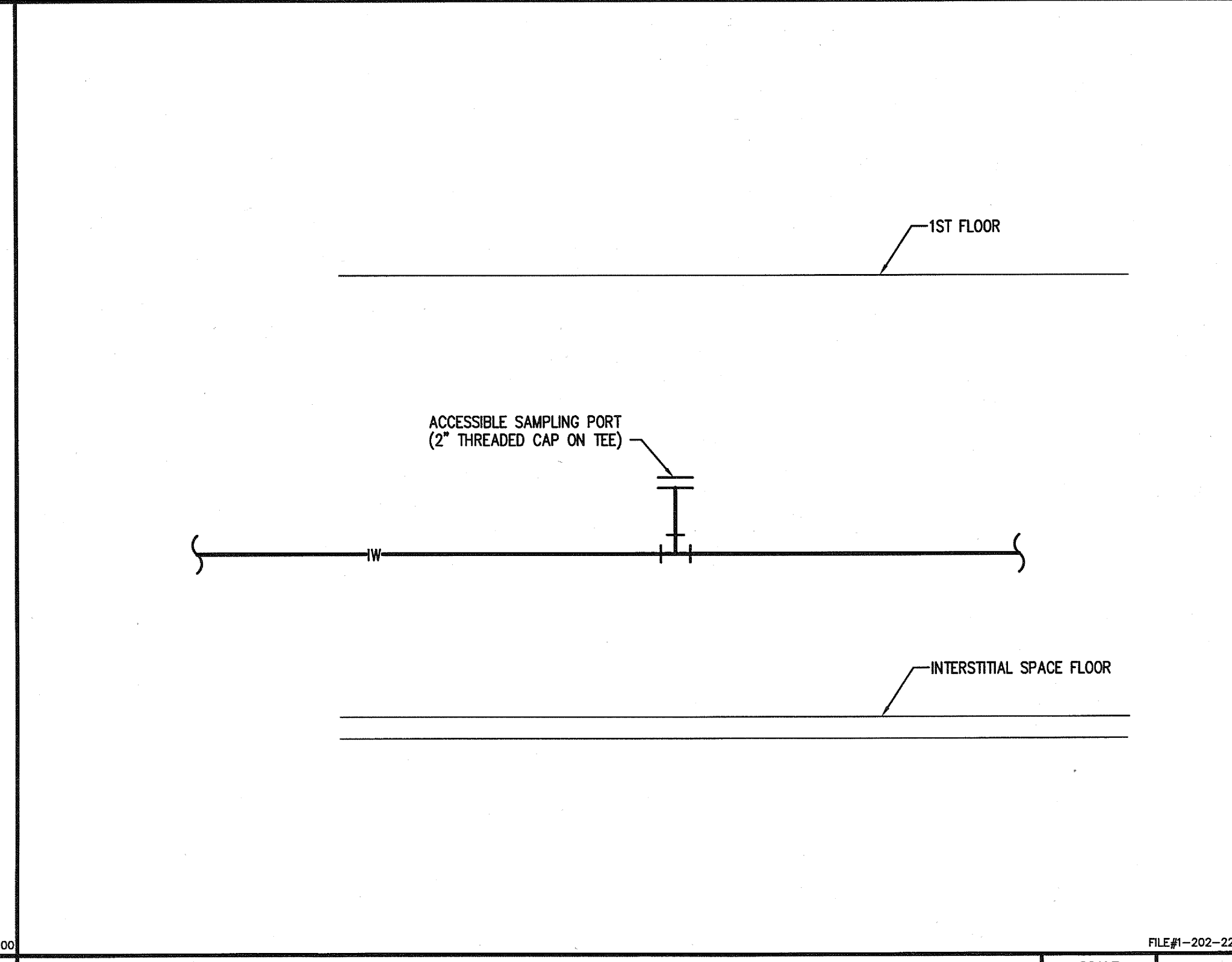
UNDERGROUND FIRE SERVICE DETAIL



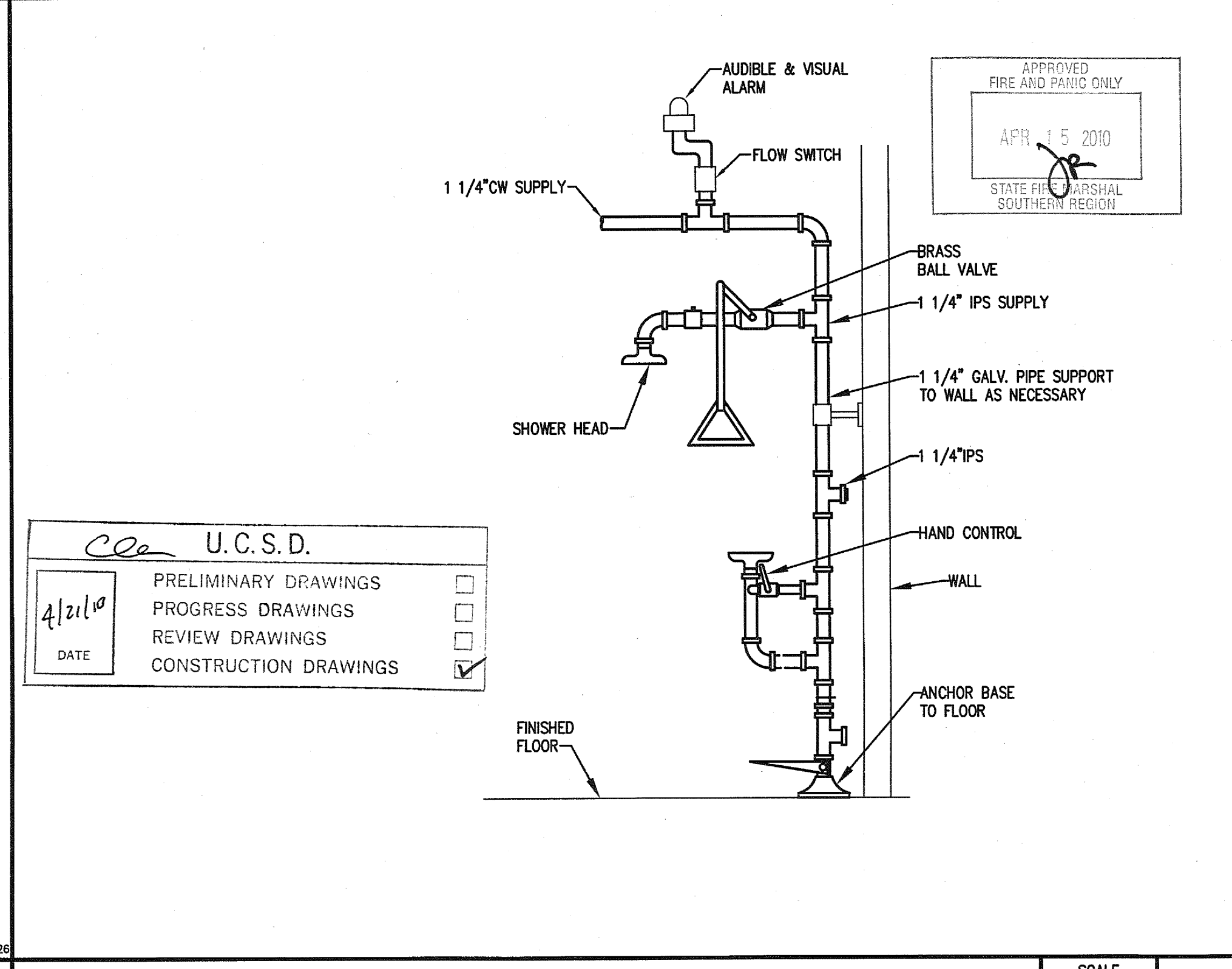
CO2 GAS BOTTLE MANIFOLD PIPING



DISHWASHER HOOK-UP



IW SAMPLING PORT



EMERGENCY SHOWER / EYEWASH ESE-1

RW 2909

WORK ORDER NO. 431587  
SANFORD CONSORTIUM FOR REGENERATIVE MEDICINE  
2880 TORREY PINES SCENIC DRIVE  
LA JOLLA, CALIFORNIA 92037

Copyright © Fentress Architects  
ISSUED FOR DATE  
Pre-Schematic Design 07/14/2008  
Schematic Design 07/28/2008  
BID PK #1 10/05/2008  
50% Progress 10/24/2008  
BID PK #1 80 CD 12/01/2008  
BID PK #1 100 CD 02/16/2009  
BID PK #2 100 CD 03/26/2009  
100% CD 06/08/2009  
CD 4 01/07/2010  
CD 1 02/26/2010  
CD 2 02/26/2010  
CD 4 04/15/2010

CONSULTANT  
Xanthus Engineering & Design  
San Diego, CA 92101  
619.597.0555 Fax 619.597.0555  
www.xanthus.com

STAMP  
FENTRESS ARCHITECTS  
DAVID DAVIS  
ARCHITECTS  
STATE OF CALIFORNIA  
SHEET NAME  
PLUMBING DETAILS  
DRAWN BY: Author  
PROJECT #: 200725.000  
SHEET NUMBER  
P5001