



ASSOCIATED SCHOOLS OF CONSTRUCTION

ROCKY MOUNTAIN REGION
REGION VI
AK, AZ, CO, ID, MT, NV, NM, UT, WY

FAR WEST REGION
REGION VII
CA, HI, OR, WA

Region VII Commercial Building Division PROBLEM AUTHOR AND ADMINISTRATOR BIOGRAPHIES

February 6-9, 2013



**Hensel Phelps
Construction Co.**

The intent of this document is to help you get acquainted with the people that have authored and are administering this year's competition. We hope that you will feel free to call us by our first names as we interact with you in the competition room, your workroom, and in social settings. Besides those listed, other Hensel Phelps Construction Co. employees will be attending the competition to help out with the Career Fair and other tasks; we hope that you will introduce yourselves to them too. Be assured that even though many of these people look like highly paid models, they are, in fact, Hensel Phelps Construction Co. employees!

Please feel free to contact us after the competition at the email and telephone contacts provided if we can be of assistance with your school work, career planning or other.

During the competition we won't be checking emails. Please limit phone calls to EMERGENCIES (major melt-downs) only. Eun Kim should be your first contact for emergencies and can be reached at (408) 690-2521 when cell phone reception is available. Cell phone text messages are acceptable as well if limited to emergencies.



Hensel Phelps Construction Co.

Northern California District
226 Airport Parkway, Suite 150
San Jose, CA 95110
(408) 452-1800

Southern California District
18850 Von Karman Ave., Suite 100
Irvine, CA 92612
(949) 852-0111

Western District
4129 East Van Buren, Suite 100
Phoenix, Arizona 85008
(520) 624-2216

Plains District/ Corporate Offices
420 Sixth Ave., PO Box O
Greeley, CO 80632
(970) 352-6565

Southwest District
8322 Cross Park Drive, PO Box 140107
Austin, TX 78714
(512) 834-9848
(512) 834-9844 fax

Southeast District
6280 Hazeltine National Drive
Orlando, FL 32822
(407) 856-2400
(407) 856-6111 fax

Pacific District
841 Bishop Street, Suite 2001
Honolulu, HI 96813
(808) 535-9500

Mid-Atlantic District
4437 Brookfield Corporate Drive, Suite 207
Chantilly, VA 20151
(703) 828-3200

www.henselphelps.com

BRYAN AMAREL

Recruiting Support



Bryan is an Operations Manager for Hensel Phelps Construction Co. in the Western District. He joined Hensel Phelps in 1995 after receiving a degree in Construction Management from the University of Washington. He began his career in the Northern California District but has since moved to our Western District.

Email: bamarel@henselphelps.com

Phone: (480) 383-8480 Office

The following are a few project highlights while working for Hensel Phelps:

City North Phoenix	Operations Manager	\$148 M
Twentynine Palms - North Mainside Expansion	Operations Manager	\$143 M
Sacramento City Hall	Project Manager	\$55 M
San Joaquin County Administration Building	Project Manager	\$93 M
621 Capitol Mall	Project Manager	\$75 M

BRETT AYOOB, PSP

Section Author



Brett is a Project Scheduler for Hensel Phelps Construction Co. in the Northern California District, currently working on multiple projects at San Francisco International Airport. Brett joined Hensel Phelps in 2011 as a Project Scheduler after providing Hensel Phelps with Schedule Consulting services for over two years on various projects.

Brett competed in the ASC Student Competition in 1997 and 1998 while attending Chico State University. In his spare time, Brett enjoys coaching football, golfing and working on art projects with his two daughters.

Email: bayoob@henselphelps.com

Phone: (408) 307-7277 Cell

The following are a few project highlights while working for Hensel Phelps:

SFO Replacement Air Traffic Control Tower and Integrated Facility	Scheduling Manager	\$84 M
Santa Clara Medical Center Receiving and Support Center	Project Scheduler	\$53 M
Vantage Data Center V2	Project Scheduler	\$80 M
Vantage Data Center V1	Project Scheduler	\$29 M
San Jose International Airport TAIP Terminal A	Project Scheduler	\$97 M



Hensel Phelps Construction Co.

SUE BHATTACHARJEE

Section Author



Sue is an Office Engineer for Hensel Phelps Construction Co. in the Northern California District. She received her bachelor's degree in Civil Engineering at Mumbai University. She then attended Texas A&M University to obtain her master's degree in Construction Management.

While attending Texas A&M, Sue competed as a student in the 2006 ASC Student Competition. This will be her first year to participate as a problem author and to experience the behind-the-scene action.

Email: sbhattacharjee@henselphelps.com

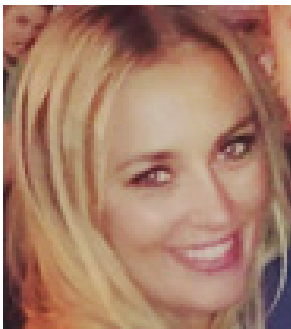
Phone: (650) 821-9353 Jobsite

The following are a few project highlights while working for Hensel Phelps:

SFO Replacement Air Traffic Control Tower and Integrated Facility	Office Engineer	\$84 M
Salinas Valley Memorial Hospital Renovation	Field Engineer	\$27 M

JULIA BUCKI

Section Author



Julia is an Office Engineer for Hensel Phelps Construction Co. in the Western District. She joined Hensel Phelps Construction Co. in 2008 after receiving a degree in Mechanical Engineering from the Colorado School of Mines.

This is Julia's first time working at the ASC Reno competition as a Section Author. In her spare time, Julia enjoys softball, sports, and playing with her two dogs.

Email: jbucki@henselphelps.com

Phone: (970) 396-1057 Jobsite

The following are a few project highlights while working for Hensel Phelps:

University of Arizona Cancer Center	Office Engineer	\$74 M
Twentynine Palms - Northside Main Expansion	Office Engineer	\$143 M
PHX Sky Train - Sky Harbor International Airport	Field Engineer	\$343 M
City North Phoenix	Field Engineer	\$148 M



Hensel Phelps Construction Co.

MONICA CARL ASHLEY

Section Author, Judge



Monica is an Area Superintendent for Hensel Phelps Construction Co. in the Northern California District. After her first internship, she decided to join the team full time after graduating from Chico State in 2005. Monica has helped complete five projects and is now working in Estimating to help with procurement activities.

Monica has not only assisted with the preparation, grading and judging of previous problems, but she competed in the ASC Student Competition as a student as well. She also takes an active role in recruiting new hires and interns from Chico State and schools in the Bay Area.

Email: mcarl@henselphelps.com

Phone: (650) 863-1413 Cell

The following are a few project highlights while working for Hensel Phelps:

Vantage Data Center V2	Project Engineer	\$80 M
San Jose International Airport TAIP ConRAC Garage	Project Engineer	\$220 M
Central Service Yard Phase II	Field Engineer	\$25 M
UCSF Mission Bay 21A and 21B	Office Engineer	\$60 M
Thomas Berkley Sqaure	Office Engineer	\$31 M

SEAN CAROLAN, DBIA, LEED AP

Recruiting Support



Sean is an Operations Manager for Hensel Phelps Construction Co. in the Northern California District. He joined Hensel Phelps Construction Co. in 1996 after receiving a degree in Construction Management from Cal Poly San Luis Obispo.

Sean has been active with the ASC Reno competition since 2004 and also competed as a student on Cal Poly's commercial team. In addition, he is very active in recruiting university students for graduate and intern positions.

Email: scarolan@henselphelps.com

Phone: (925) 354-1830 Cell

The following are a few project highlights while working for Hensel Phelps:

San Quentin Central Health Services	Project Manager	\$110 M
Alameda County Juvenile Justice Center	Project Manager	\$142 M
Coalingua State Hospital Secure Treatment	Area Superintendent	\$303 M
Renaissance Club Sport Hotel	Area Superintendent	\$31 M
Oakland Administration Buildings	Office/Field Engineer	\$ 95 M



Hensel Phelps Construction Co.

CHRIS CHACON

Recruiting Support



Chris is an Operations Manager for Hensel Phelps Construction Co. in the Western District. He joined Hensel Phelps Construction Co. in 1995 after receiving a degree in Civil Engineering from Cal Poly San Luis Obispo. He began his career in the Southern California District, but was later transferred to HP International and now resides in Tucson as part of our Western District.

Email: cchacon@henselphelps.com

Phone: (520) 631-0735 Cell

The following are a few project highlights while working for Hensel Phelps:

Mariposa LPOE - Modernization & Expansion	Operations Manager	\$20 M
U of A McClelland Park	Project Manager	\$27 M
U of A Chemistry Expansion	Area Superintendent	\$36 M
FDA Laboratory at Irvine	Project Engineer	\$42 M
Disney's California Adventure	Project Engineer	\$84 M

WADE CHANCE

Section Author, Judge



Wade is an Area Superintendent for Hensel Phelps Construction Co. in the Western District. He joined Hensel Phelps in 2006 after receiving a degree in Construction Management from Northern Arizona University

Wade competed in three ASC Student Competitions from 2004 to 2006 and this is his fourth year on the committee to help administer the competition. He has been involved in recruiting since 2007. In his spare time, Wade enjoys wake boarding, snowboarding and off road motor sports.

Email: wchance@henselphelps.com

Phone: (520) 604-8365

The following are a few project highlights while working for Hensel Phelps:

Mariposa Land Port Entry	Project Engineer	\$143 M
PHX Sky Train - Sky Harbor International Airport	Project Engineer	\$330 M
Foreign Security Forces TT Mission	Office Engineer	\$94 M
BCT-H Barracks	Field Engineer	\$130 M
City North Phoenix	Field Engineer	\$148 M



Hensel Phelps Construction Co.

BRADY CHURCH

Section Author



Brady is an Area Superintendent for Hensel Phelps Construction Co. in the Southern California District. Brady joined Hensel Phelps in 2006 after receiving a degree in Civil Engineering from San Diego State University.

When he gets a free moment, he heads to the mountains to go skiing or rock climbing.

Email: bchurch@henselphelps.com

Phone: (619) 437-4082 Jobsite

The following are a few project highlights while working for Hensel Phelps:

P750 Helicopter Maintenance Facility Coronado	Project Engineer	\$58 M
MCAS Miramar Hangars	Project Engineer	\$103 M
Sanford Consortium for Regenerative Medicine	Field Engineer	\$85 M
LAUSD Edward R Roybal Learning Center	Field Engineer	\$157 M
Hilton San Diego	Field Engineer	\$242 M

RYAN DE LIRA, LEED AP

Judge



Ryan is a Project Manager for Hensel Phelps Construction Co. in the Southern California District. He joined Hensel Phelps Construction Co. in 2001 after receiving a degree in Construction Management from Illinois State University.

This will be Ryan's first time judging the ASC Student Competition. He is eager to see how each team will manage the real life situations presented to them during the competition.

Email: rdelira@henselphelps.com

Phone: (619) 437-4082 Jobsite

The following are a few project highlights while working for Hensel Phelps:

P750 Helicopter Maintenance Facility Coronado	Project Manager	\$58 M
Sanford Consortium for Regenerative Medicine	Area Superintendent	\$85 M
Hotel Indigo	Project Engineer	\$40 M
Hilton San Diego Bayfront	Project Engineer	\$242 M
Plaza at Scripps Northridge Office & Parking Structure	Project Engineer	\$13 M



Hensel Phelps Construction Co.

JOEL DOUGLASS, DBIA

Recruiting Support



Joel is an Operations Manager for Hensel Phelps Construction Co. in the Western District. He joined Hensel Phelps Construction Co. in 1990 after receiving a degree in Construction Engineering & Management at Purdue University. He has travelled the county building projects in Washington D.C., Texas, Colorado, Maryland and Virginia.

Chris plays an active role in recruiting for the Western District and is excited to meet the students at this year's ASC Student Competition.

Email: jdouglass@henselphelps.com

Phone: (703) 828-3200 Office

The following are a few project highlights while working for Hensel Phelps:

Social Security Administration National Support Center	Operations Manager	\$192 M
SOF Hangar Aircraft Maintenance Unit Cannon AFB	Operations Manager	\$28 M
Marriot Marquis Washington DC	Project Manager	\$378 M
Equinix Data Center 6	Project Manager	\$39 M
Equinix Data Center 5	Project Manager	\$48 M

MIKE GULOTTA

Section Author, Judge



Mike is a Project Engineer for Hensel Phelps Construction Co. in the Southern California District. He joined Hensel Phelps Construction Co. in 2008 after receiving a degree in Civil Engineering from the University of Central Florida.

This is Mike's second year as a section author for the ASC Student Competition and first year judging the competition.

Email: mgulotta@henselphelps.com

Phone: (562) 912-6500

The following are a few project highlights while working for Hensel Phelps:

LBUSD HS#2 Preconstruction	Project Engineer	\$38 M
Central Region Elementary School #22	Project Engineer	\$28 M
Central LA Learning Center #1 Phase 2	Office Engineer	\$335
Central LA Learning Center #1 Phase 1	Field Engineer	\$85 M



Hensel Phelps Construction Co.

ROD HAMMETT, DBIA

Resource



Rod is a Project Manager for Hensel Phelps Construction Co. in the Southern California District. He joined Hensel Phelps Construction Co. in 1991 after receiving a degree in Construction Management from Cal Poly San Luis Obispo.

Rod has been active with the ASC Reno competition since 2002 and chairs HPCC's committee to administer the competition. He is very active in recruiting university students for graduate and intern positions. He is supported at home by his wife and three children.

Email: rhammett@henselphelps.com

Phone: (949) 300-8527 Cell

The following are a few project highlights while working for Hensel Phelps:

MLK Medical Center Inpatient Tower	Project Manager	\$175 M
UCI Medical Center Hospital Phase 2	Project Manager	\$100 M
UC Irvine Medical Center New Hospital	Project Manager	\$281 M
The Mark Condominiums	Project Manager	\$91 M
Aliso Village Phase I	Project Manager	\$27 M

JIM HICKERNELL

Section Author, Judge



Jim is currently a Project Engineer for Hensel Phelps Construction Co. in the Northern California District. He joined Hensel Phelps in 2008 after receiving a degree in Construction Science from Texas A&M University. This is Jim's second year working on the ASC Reno Competition.

Email: jhickernell@henselphelps.com

Phone: (408) 855-6700 Jobsite

The following are a few project highlights while working for Hensel Phelps:

Santa Clara Valley Medical Center Receiving and Support Center	Project Engineer	\$55 M
Samaritan Medical Office Building and Parking Structure	Office Engineer	\$19 M
San Jose International Airport TAIP Terminal B	Field Engineer	\$108 M



Hensel Phelps Construction Co.

EUN KIM

Executive Judge



Eun is a Project Manager for Hensel Phelps Construction Co. in the Northern California District. She joined Hensel Phelps Construction Co. in 2007. She is a proud graduate of the University of Texas at Austin and received her degree in Architectural Engineering in 2000.

After having a great time at the 2012 ASC Student Competition, she is returning to administer the competition for Hensel Phelps.

Email: ekim@henselphelps.com

Phone: (408) 690-2521 Cell

The following are a few project highlights while working for Hensel Phelps:

Samaritan Medical Office Building and Parking Structure	Project Manager	\$19 M
San Jose International Airport TAIP Terminal A	Project Engineer	\$97 M

KEVIN LANKFORD

Section Author



Kevin is a Project Engineer for Hensel Phelps Construction Co. in the Northern California District. He joined Hensel Phelps Construction Co. in 2008 after receiving a degree in Construction Science from Texas A&M University. This is Kevin's first year participating in the ASC Student Competition.

Email: klankford@henselphelps.com

Phone: (209) 507-7800 Jobsite

The following are a few project highlights while working for Hensel Phelps:

Dewitt Nelson Correctional Annex	Office Engineer	\$120 M
Vantage Data Center V1	Office Engineer	\$30 M
Unaccompanied Enlisted Personnel Housing (UEPH)	Office Engineer	\$335 M
Tactical Equipment Maintenance Facility (TEMF)	Field Engineer	\$47 M
Samsung Fab A2	Field Engineer	Confidential



Hensel Phelps Construction Co.

RON MITCHELL

Recruiting Resource



Ron is a General Superintendent for Hensel Phelps Construction Co. in the Northern California District. He joined Hensel Phelps Construction Co. in 1993 after receiving a degree in Engineering Technology/Construction Management from California State University, Sacramento.

He has participated numerous times in administrating the ASC Student Competition and plays an active role in recruiting for new hire and intern positions.

Email: rmittchell@henselphelps.com

Phone: (916) 825-2233 Cell

The following are a few project highlights while working for Hensel Phelps:

DeWitt Nelson Conversion Annex	General Superintendent	\$123 M
CHCF Package 1 Site and Unsecured Facilities	General Superintendent	\$129 M
SFO Boading Area E Improvements (Terminal 3)	General Superintendent	\$102 M
Veterans Home of California - Fresno	General Superintendent	\$124 M
Yolo Superior Courthouse	General Superintendent	\$103 M

JIM PAPPAS

Recruiting Support



Jim is currently an Operations Manager for Hensel Phelps Construction Co. in the Northern California District. He joined Hensel Phelps in 1989 after receiving a degree in Architectural Engineering from the University of Texas at Austin. He began his career in the Southwest District and has recently joined the Northern California District.

This will be Jim's first ASC Student Competition. He plays an active role in recruiting new hires and interns for Hensel Phelps.

Email: jpappas@henselphelps.com

Phone: (408) 452-1800 Office

The following are a few project highlights while working for Hensel Phelps:

UAS Maintenance Hangar - Holloman AFB	Operations Manager	\$20 M
City of San Antonio Public Safety Headquarters	Operations Manager	\$19 M
University of Texas at Austin Dell Pediatric Research Institute	Operations Manager	\$68 M
Hard Rock Park	Operations Manager	\$112 M
Combat Aviation Bridgade Hangars, Task Order 1	Operations Manager	\$57 M



Hensel Phelps Construction Co.

RYAN PIPER, LEED AP, STS

Section Author, Judge



Ryan is a Project Manager for Hensel Phelps Construction Co. in the Northern California District. He joined Hensel Phelps in 2003 after receiving a degree in Civil Engineering from Cal Poly San Luis Obispo.

Ryan has been active with the ASC Reno competition since 2007. In addition, he is active in recruiting for graduate and intern positions.

Email: rcpiper@henselphelps.com

Phone: (209) 507-7800 Jobsite

The following are a few project highlights while working for Hensel Phelps:

DeWitt Nelson Correctional Annex	Project Manager	\$123 M
San Quentin State Prison - CHSB	Area Superintendent	\$110 M
Kaweah Delta District Hospital	Project Engineer	\$99 M
Alameda County Juvenile Justice Center	Project Engineer	\$ 142 M
USCF Mission Bay 21A and 21B	Field Engineer	\$60 M

TIM QUEELY

Section Author



Timothy is a Project Engineer for Hensel Phelps Construction Co. in the Western District. He joined Hensel Phelps Construction Co. in 2007 after receiving a degree in Construction Engineering Technology from the Florida A&M University. This is Tim's first year participating in the ASC Student Competition.

Tim has been involved in recruiting since 2009. In his spare time, Tim enjoys playing basketball, crafting model homes and spending time with his wife and 9 month old son.

Email: tqueely@henselphelps.com

Phone: (928) 328-1852 Jobsite

The following are a few project highlights while working for Hensel Phelps:

P573 Intermediate Maintenance Activity Facility	Project Engineer	\$15 M
Tinker AFB Med/Dental Clinic	Office Engineer	\$335 M
Fort Polk Foreign Security Forces	Field Engineer	\$94 M
City North Phoenix	Field Engineer	\$148 M



Hensel Phelps Construction Co.

FAWN-LEA SHEFFIELD

Recruiting Resource



Fawn is a Project Engineer for Hensel Phelps Construction Co. in the Southern California District. She joined Hensel Phelps Construction Co. in 2006 after receiving her master's degree in Construction Engineering Management from Lawrence Technological University.

Email: fsheffield@henselphelps.com

Phone: (313) 418-3585 Cell

The following are a few project highlights while working for Hensel Phelps:

Kaiser Permanente Moreno Valley IRIS MOB II	BIM Coordinator	\$32 M
Kaiser Permanente Anaheim Medical Center Hospital	Project Engineer	\$353 M
Kaiser Permanente Anaheim Medical Center Central Utility Plant	Office Engineer	\$43 M
LAUSD Edward R Roybal Learning Center	Field Engineer	\$157M

JON RICKETTS, LEED AP

Section Author, Judge



Jon is currently an Project Engineer for Hensel Phelps Construction Co. in the Southern California District. He joined Hensel Phelps in 2005 after receiving a degree in Civil Engineering from San Diego State University.

This is Jon's second year to author and first year to judge the ASC Student Competition.

Email: jricketts@henselphelps.com

Phone: (619) 549-1242 Cell

The following are a few project highlights while working for Hensel Phelps:

P750 Helicopter Maintenance Facility Coronado	Project Engineer	\$58M
Sanford Consortium for Regenerative Medicine	Office Engineer	\$53 M
University of Arizona Law Commons	Field Engineer	\$13 M
New Commissary Facility Navsta, San Diego	Field Engineer	\$29 M
Commissary Tinker AFB	Quantity Surveyor	\$14 M



Hensel Phelps Construction Co.

DAVID SHELLMAN

Section Author, Judge



David is an Office Engineer for Hensel Phelps Construction Co. in the Southern California District. He joined Hensel Phelps Construction Co. in 2008 after receiving a degree in Construction Engineering Technology, Emphasis in Construction Engineering from Cal Poly Pomona.

David participated in the ASC Student Competition as a student in 2007 and this is his first year on the committee as a section author. He has been involved in recruiting since 2009 at his Alma Mater.

Email: dshellman@henselphelps.com

Phone: (949) 255-3870 Jobsite

The following are a few project highlights while working for Hensel Phelps:

Alaska Airlines LAX T6 Renovation	Office Engineer	\$205 M
Barstow Machine Shop Task Order #1	Office Engineer	\$6 M
CLALC #1 Phase 1	Field Engineer	\$85 M

JEFF WELLENSTEIN

Recruiting Coordinator



Jeff is a Project Manager for Hensel Phelps Construction Co. in the Northern California District. He joined Hensel Phelps Construction Co. in 1998 after receiving a degree in Construction from the University of Wisconsin Stout.

Jeff has been active with the ASC Reno competition since 2000. In addition, he is very active in recruiting university students for graduate and intern positions.

Email: jwellenstein@henselphelps.com

Phone: (916) 417-2959 Cell

The following are a few project highlights while working for Hensel Phelps:

San Ysidro US Land Port of Entry PH 1B	Project Manager	\$160 M
1000 K Street	Superintendent	\$9 M
Capitol Area East End, Block 225	Superintendent	\$93 M
Sacramento City Hall	Project Engineer	\$55 M
Sheraton Grand Sacramento	Office Engineer	\$55 M



Hensel Phelps Construction Co.