

# SITE PLAN LEGEND

- ACCESSIBLE ROUTE PATH OF TRAVEL
- LEED BOUNDARY
- PROPERTY LINE

## ACCESSIBILITY NOTES:

- MAXIMUM SLOPE OF ALL WALKWAYS = 1:33
- MINIMUM CLEAR WIDTH OF WALKWAYS = 5'-0"
- MINIMUM GRADIENT OF WALKWAYS REQUIRING REST AREAS EVERY 200'-0". MAX. = 1:50
- A1.00 SHALL GOVERN OVERALL SITE
- SEE A1.11 FOR FIRE/LIFE SAFETY INFORMATION AND ACCESSIBLE PATH OF TRAVEL TO EXTERIOR AREAS OF ASSISTED RESCUE

## SHEET NOTES:

- GARDEN GATES AT BUILDING 1 (SNF MEMORY) AND BUILDING 2 (RCFE MEMORY) TO BE EQUIPPED WITH HARDWARE SET 44
- SEE A10.56 OPENING SCHEDULE SITE GATES FOR GATE HARDWARE, SPECIFICATIONS SECTION 08 71 10
- PROJECT EXEMPT FROM LOCAL PLANNING DEPARTMENT SETBACK REQUIREMENTS. SETBACK DIMENSIONS AS SHOWN ON THIS SHEET, A1.00 SHALL GOVERN
- SEE C2.00 FOR PAVING AND STRIPING
- SEE C3.01-C3.06 FOR LOCATIONS OF DETECTABLE WARNING DEVICES
- SEE SPECIFICATIONS VOLUME 3 FOR ACCESSIBLE SIGNAGE

## PARKING COUNT:

STANDARD PARKING = 393  
VAN ACCESSIBLE PARKING = 8  
STANDARD ACCESSIBLE PARKING = 38  
LOW EMISSION VEHICLE (LEV) PARKING = 24  
TOTAL PARKING = 463

NO.	DESCRIPTION	DATE
G	DSA PLAN REVIEW - BC #1	11/19/10
H	DSA PLAN REVIEW - BC #2	01/25/11
I	CSFM PLAN REVIEW - 100% MS / BC	01/25/11

## Approvals:

OFFICE OF STATE FIRE MARSHAL  
APPROVED  
CSFM APPLICATION # 01-10-42-0082  
Approval of this plan does not authorize or approve any omission or deviation from applicable regulations. Final approval is subject to field inspection. One set of approved plans shall be available on the project site at all times.

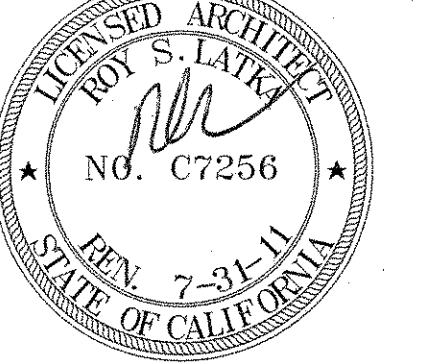
By: *[Signature]* Date: 1/10/2011

IDENTIFICATION STAMP  
DIVISION OF THE STATE ARCHITECT  
DSA APPLICATION # 111582-02

APPROVED FOR ACCESS COMPLIANCE

By: *[Signature]* Date: 1/25/11

## Stamp:

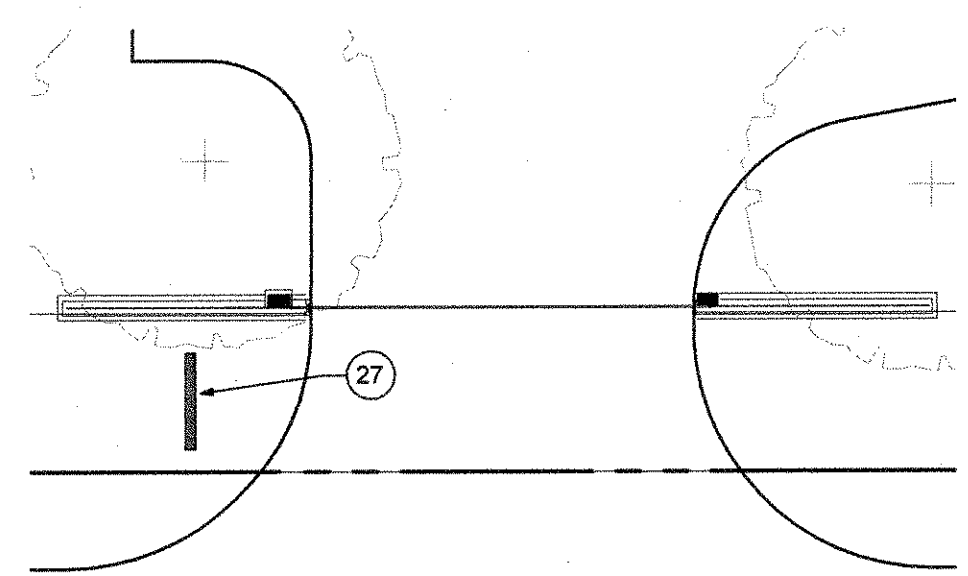


## CONSTRUCTION DOCUMENTS

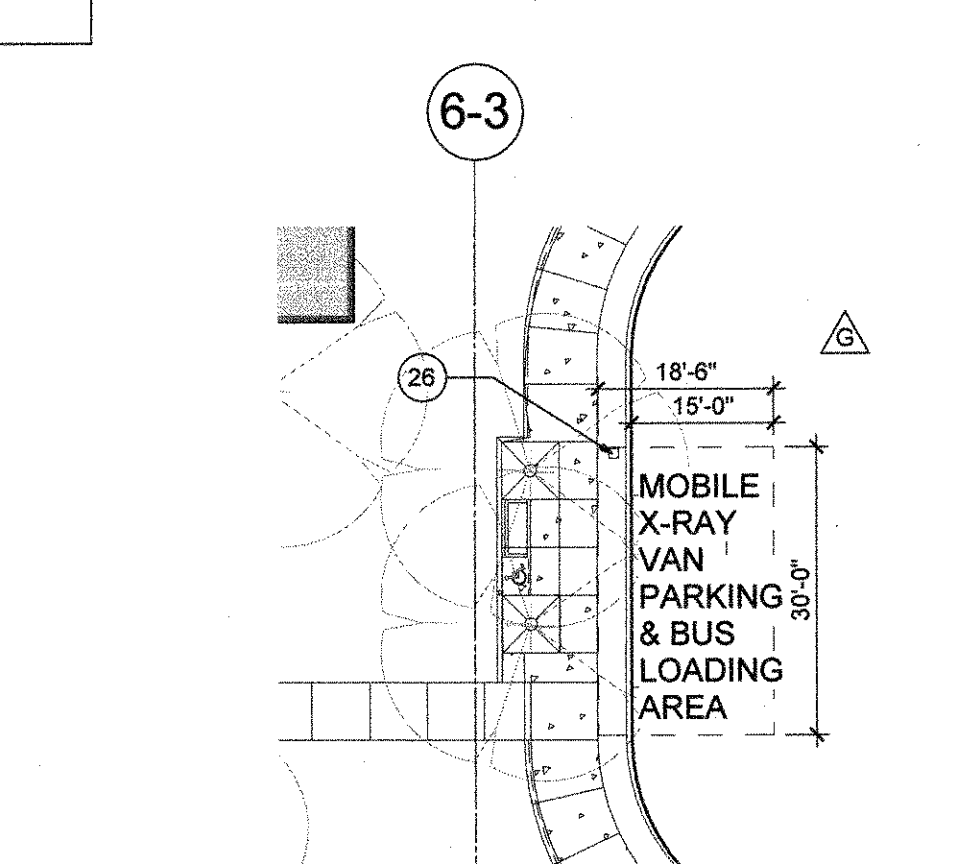
SUBMITTAL	PROJECT NO. 893-801			
	DRAWN BY		CHKD BY	DATE
	DATE		01/25/11	
	SCALE		As indicated	
	TITLE		OVERALL SITE PLAN & SITE ACCESSIBILITY	
	NUMBER		A1.00	
	DRAWING			

## KEY NOTES:

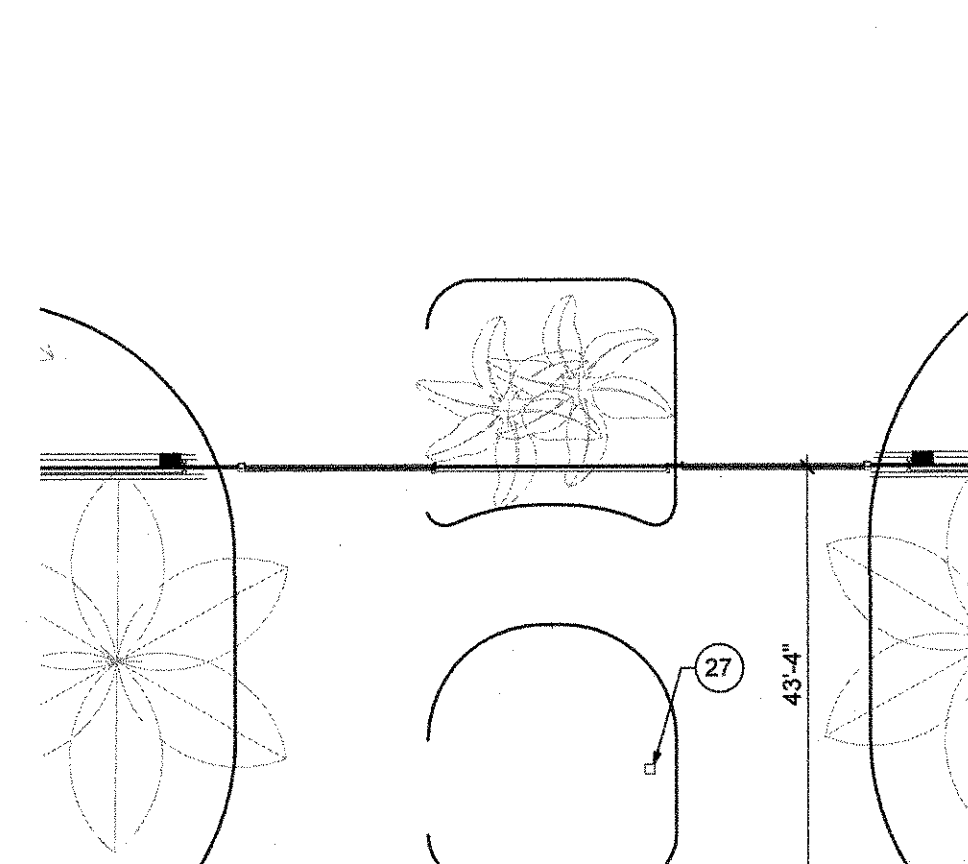
- PROPERTY LINE / LIMIT OF WORK / PERIMETER FENCE
- PERIMETER FENCE, SEE LANDSCAPE SITE DETAILS, L2.06
- MOTORIZED ACCESS GATE, SEE LANDSCAPE SITE DETAILS, L2.06
- ACCESSIBLE PATH OF TRAVEL TO EXTERIOR AREAS OF ASSISTED RESCUE, SEE A1.11 FOR CONTINUITY
- NOT USED
- NOT USED
- FIRE TRUCK ACCESS
- PEDESTRIAN CROSSING, SEE C2.00
- ENCLOSED WALKWAY
- COVERED WALKWAY
- BUS STOP (BY OTHERS)
- PARADE GROUND
- X-RAY VAN PARKING
- NOT USED
- SITE MONUMENT SIGN, SEE PROJECT MANUAL VOL. 3
- LOADING DOCK
- NOT USED
- DROP-OFF WITH BUS ACCESS
- SERVICE MAN GATE, SEE LANDSCAPE SITE DETAILS, L2.06
- PORT COCHERE
- FLAG POLES
- NOT USED
- NOT USED
- EXTERIOR STANDPIPE, SEE A1.11, C6.01-C6.06
- NOT USED
- W.P. POWER RECEPTACLE, PEDESTAL MOUNTED FOR X-RAY VAN, SEE E1.00
- W.P. INTERCOM, PEDESTAL MOUNTED
- LIFT STATION, (S.C.D.)



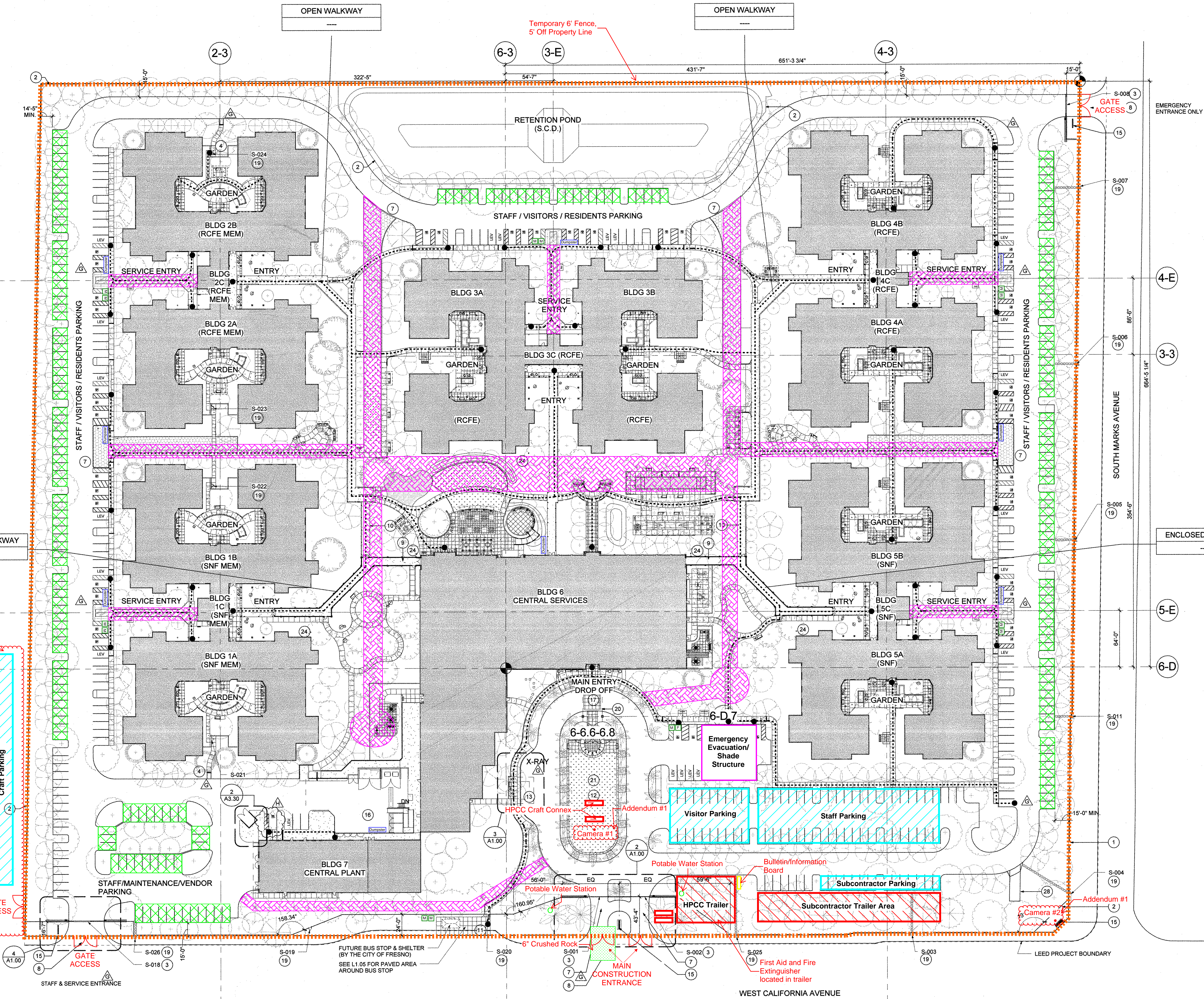
4 SERVICE ENTRY  
SCALE 1" = 20'-0"



3 X-RAY VAN PARKING  
SCALE 1" = 20'-0"



2 MAIN ENTRANCE  
SCALE 1" = 20'-0"



1 SITE PLAN  
SCALE 1" = 50'-0"

- Restroom
- Laydown Area
- Material/Emergency Access