

TILT-UP CONCRETE PANEL NOTES:

1. PANEL ELEVATIONS ARE BY TYPE REFERENCE OF REINFORCING REQUIRED AND SHOWING ONLY. PARTIAL LISTING OF EMBEDMENTS AND EXTREME CAUTION SHALL BE EXERCISED BY THE CONTRACTOR TO LAY OUT PANELS TO PROPER DIMENSIONS WITH REQUIRED REINFORCING. OPENINGS AND EMBEDMENTS REQUIRED FOR EACH PANEL.
2. ALL PANEL ELEVATIONS ARE AS VIEWED FROM THE INTERIOR SIDE OF THE BUILDING EXCEPT WHERE NOTED OTHERWISE. REFERENCE ARCHITECTURAL EXTERIOR ELEVATIONS FOR LOCATIONS AND TYPES OF TEXTURES AND REVEALS.
3. DO NOT SCALE ANY PANEL ELEVATIONS SHOWN HEREIN. REFER TO PLANS AND ARCHITECTURAL DRAWINGS FOR ALL DIMENSIONS. WHERE DIMENSIONS ARE SHOWN, IT IS INTENDED ONLY AS AN AID TO THE CONTRACTOR IN PROVIDING SHOP DRAWINGS. CONTRACTOR SHALL BE RESPONSIBLE FOR VERIFICATION OF ALL DIMENSIONS WITH ARCHITECTURAL DRAWINGS PRIOR TO START OF CONSTRUCTION. RESOLVE ANY DISCREPANCY WITH ARCHITECT.
4. DIMENSIONS FROM BUILDING FINISHED FLOORS TO BOTTOM OF PANEL TO BE GOVERNED BY THE APPROPRIATELY FLAGGED FOUNDATION DETAIL FOR EACH PARTICULAR LOCATION, USED IN CONJUNCTION WITH FINISHED GRADES ADJACENT TO BUILDING SHOWN ON CIVIL ENGINEERING DRAWINGS. VERIFY WITH FLAGGED DETAILS ON ARCHITECTURAL DRAWINGS.
5. ALL PANEL OPENINGS MAY NOT BE SHOWN ON THE ELEVATIONS. FOR EXACT SIZE, NUMBER AND LOCATION OF OPENINGS, REFERENCE ARCHITECTURAL, MECHANICAL, PLUMBING AND ELECTRICAL DRAWINGS. RESOLVE ANY DISCREPANCY THRU THE ARCHITECT.
6. REFERENCE PLANS, ELEVATIONS, SECTIONS, NOTES AND/OR DETAILS FOR ALL HEIGHTS, OPENINGS, EMBEDDED ITEMS, ETC.
7. PROVIDE 1/2"x1/2" CHAMFERS AT ALL EXPOSED PANEL EDGES AND CORNERS, UNLESS NOTED OTHERWISE.
8. REINFORCING SHOWN IS FOR IN-PLACE CONDITION. CONTRACTOR SHALL BE RESPONSIBLE FOR PICK UP POINT INSERTS AND LOCATIONS. SPECIAL PICK UP REINFORCING AND STRONG BACKS, AND ALL PICK UP PLACING OPERATIONS.
9. ALL "TYPICAL REINFORCING" SHALL BE TYPICAL THRU-OUT PANEL WITH OTHER REINFORCING SHOWN IN ADDITION TO TYPICAL REINFORCING, UNLESS OTHERWISE NOTED.
10. ALL REINFORCING TO BE CENTERED IN DESIGN PANEL THICKNESS. ALL PERIMETER REINFORCING AND REINFORCING AT PERIMETERS OF OPENINGS IN PANELS TO BE 1 1/2" FROM EDGE. DOUBLE REINFORCING TO BE CENTERED IN PANEL WITH 1" CLEAR SPACE BETWEEN BARS, BUT NOT LESS THAN ONE BAR DIAMETER, UNLESS OTHERWISE SHOWN OR NOTED.
11. ALL TOP AND BOTTOM PERIMETER BARS TO HAVE 18" HOOK AT EACH END. ALL OPENINGS SIDE PERIMETER BARS TO HAVE 6" HOOK AT BOTTOM. ALL HORIZONTAL REINFORCING AT TOP OF OPENINGS TO EXTEND 2'-0" BEYOND EACH OPENING, UNLESS OTHERWISE SHOWN. REFERENCE TYPICAL OPENING IN PRECAST CONCRETE PANEL DETAIL FOR ADDITIONAL INFORMATION.
12. FOR WELDING OF ASTM A615-GRADE 60 REINFORCING BARS, USE E90 SERIES LOW HYDROGEN RODS.
13. ALL PANEL JOINTS TO BE 3/4" AND SEALED WITH BUTYL ROD AND CAULKING ON INTERIOR AND EXTERIOR FACES.

TYPICAL REINFORCING U.N.O.

INSULATED CONCRETE PANELS		
	OVERALL THICKNESS	13 1/2"
	DESIGN THICKNESS	8"
	VERTICAL BARS, CENTERED IN 8" LAYER	#5 AT 12" O.C.
	HORIZONTAL BARS, CENTERED IN 8" LAYER	#4 AT 12" O.C.
12"	THICK PANELS	
	OVERALL THICKNESS	12"
	DESIGN THICKNESS	11 1/4"
	VERTICAL BARS, EACH FACE	#5 AT 12" O.C.
	HORIZONTAL BARS, EACH FACE	#4 AT 12" O.C.
10"	THICK PANELS	
	OVERALL THICKNESS	10"
	DESIGN THICKNESS	9 1/4"
	VERTICAL BARS, EACH FACE	#5 AT 12" O.C.
	HORIZONTAL BARS, EACH FACE	#4 AT 12" O.C.
8"	THICK PANELS	
	OVERALL THICKNESS	8"
	DESIGN THICKNESS	7 1/4"
	VERTICAL BARS, CENTERED	#5 AT 12" O.C.
	HORIZONTAL BARS, CENTERED	#4 AT 12" O.C.
ALL	PANEL PERIMETER BARS	
	OPENING PERIMETER BARS	2 - #5
	MAXIMUM REVEAL DEPTH	3/4"

CERTIFICATIONS

KEY PLAN

REVISION NOTES

ADDENDUM DELTA TYPES

- △ ISSUED BY ADDNM. SKETCH OR BY RE-ISSUED SHEET
△ ISSUED BY ADDNM. NARRATIVE (TEXT) ONLY
△ ISSUED BY ADDNM. RESPONSE TO BIDDER QUESTION ONLY

GRAPHIC SCALE

CONTRACTORS

BUILDING

PROJECT

DRAWING

DRAWING NO.

DRAWING NO.

DRAWING NO.

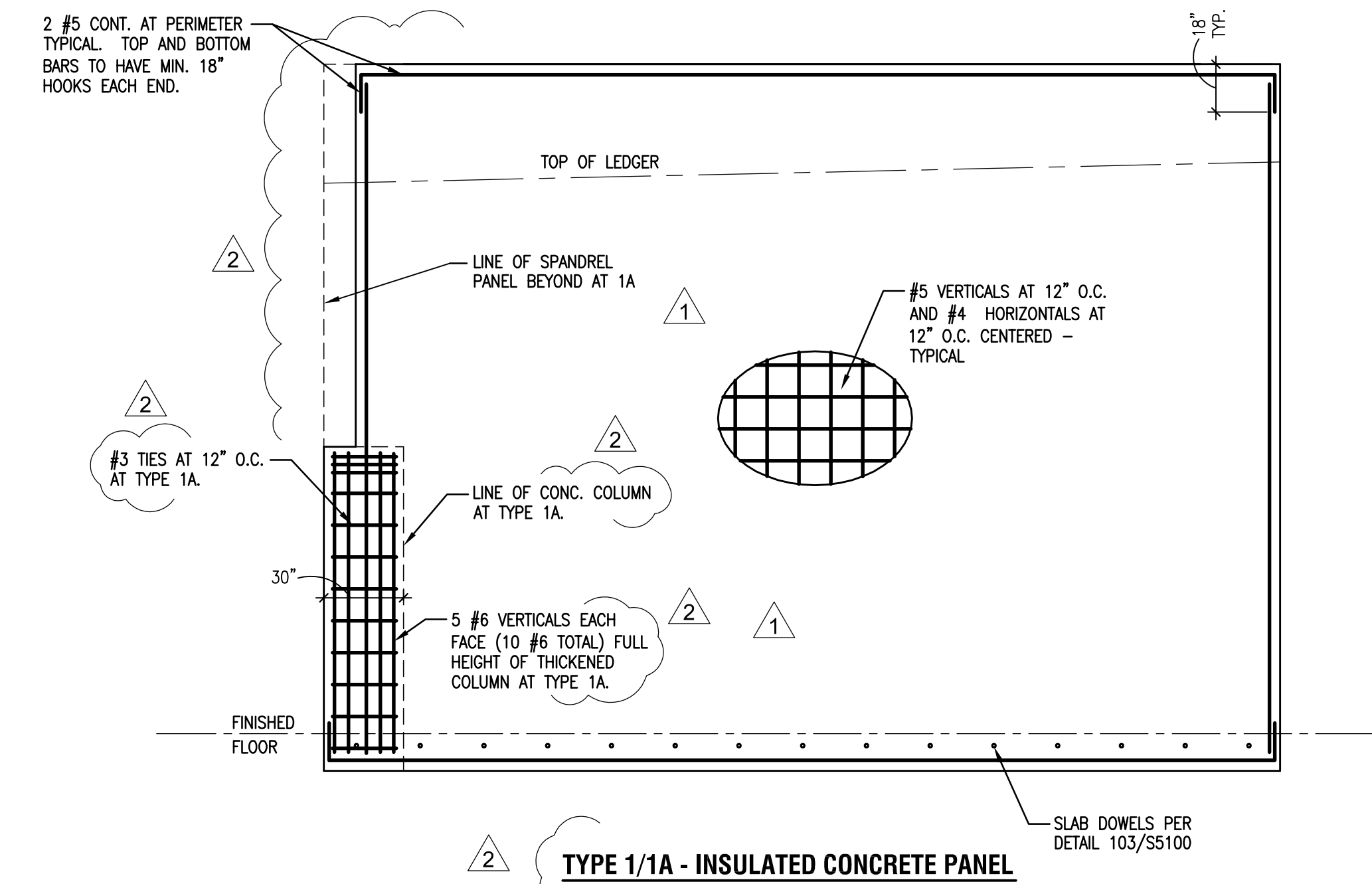
DRAWING NO.

DRAWING NO.

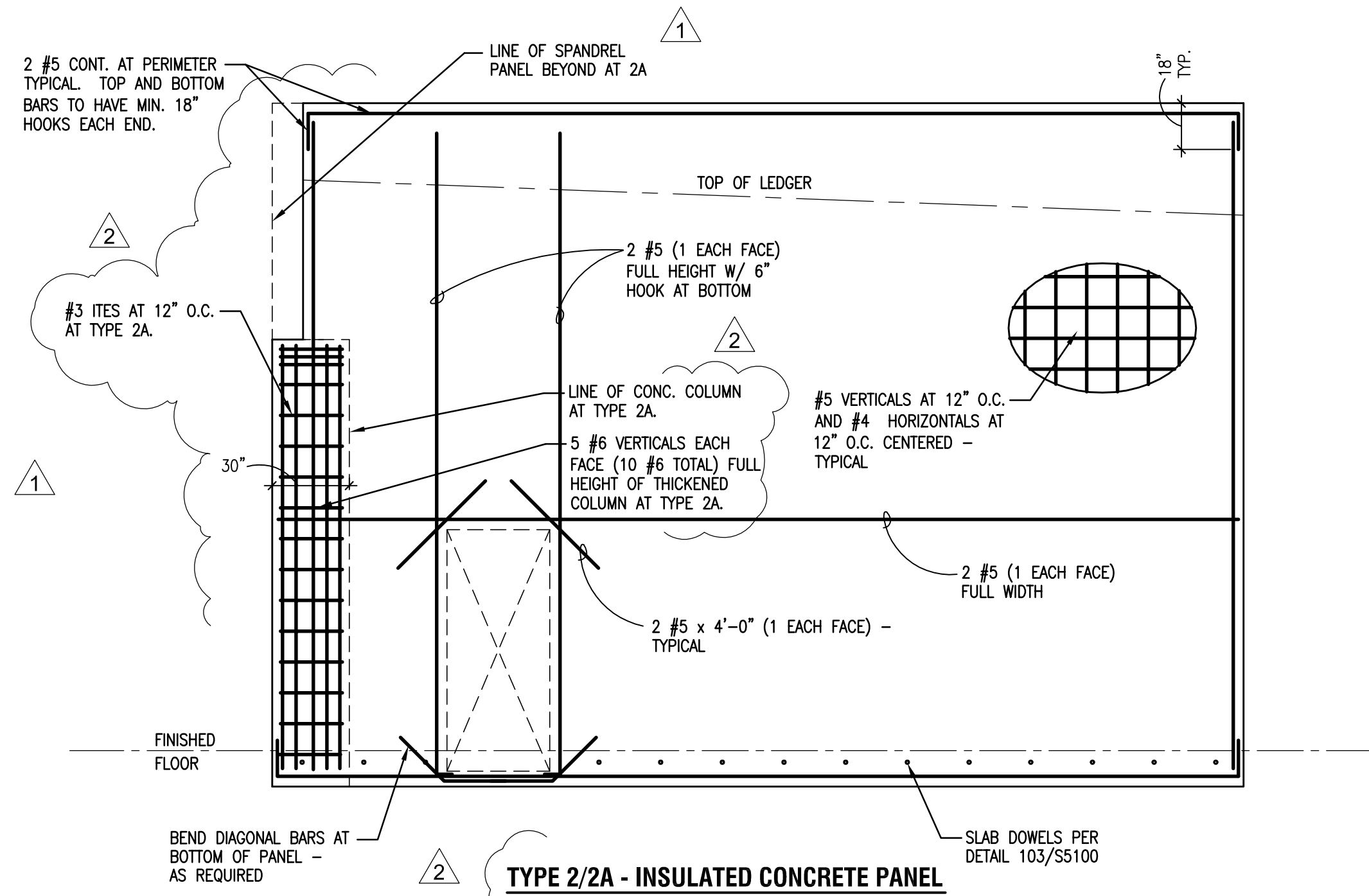
DRAWING NO.

DRAWING TITLE	A. MAIN PANEL TYPES
FILE NAME	A-S4000-NA200001.DWG
FLOOR NO.	01
DRAWN BY	DTR
CHECKED BY	FJN
DATE DRAFTED	1/3/2010
SHEET SIZE	30 X 42
PACKAGE	DISC. TYPE. SHEET NO.

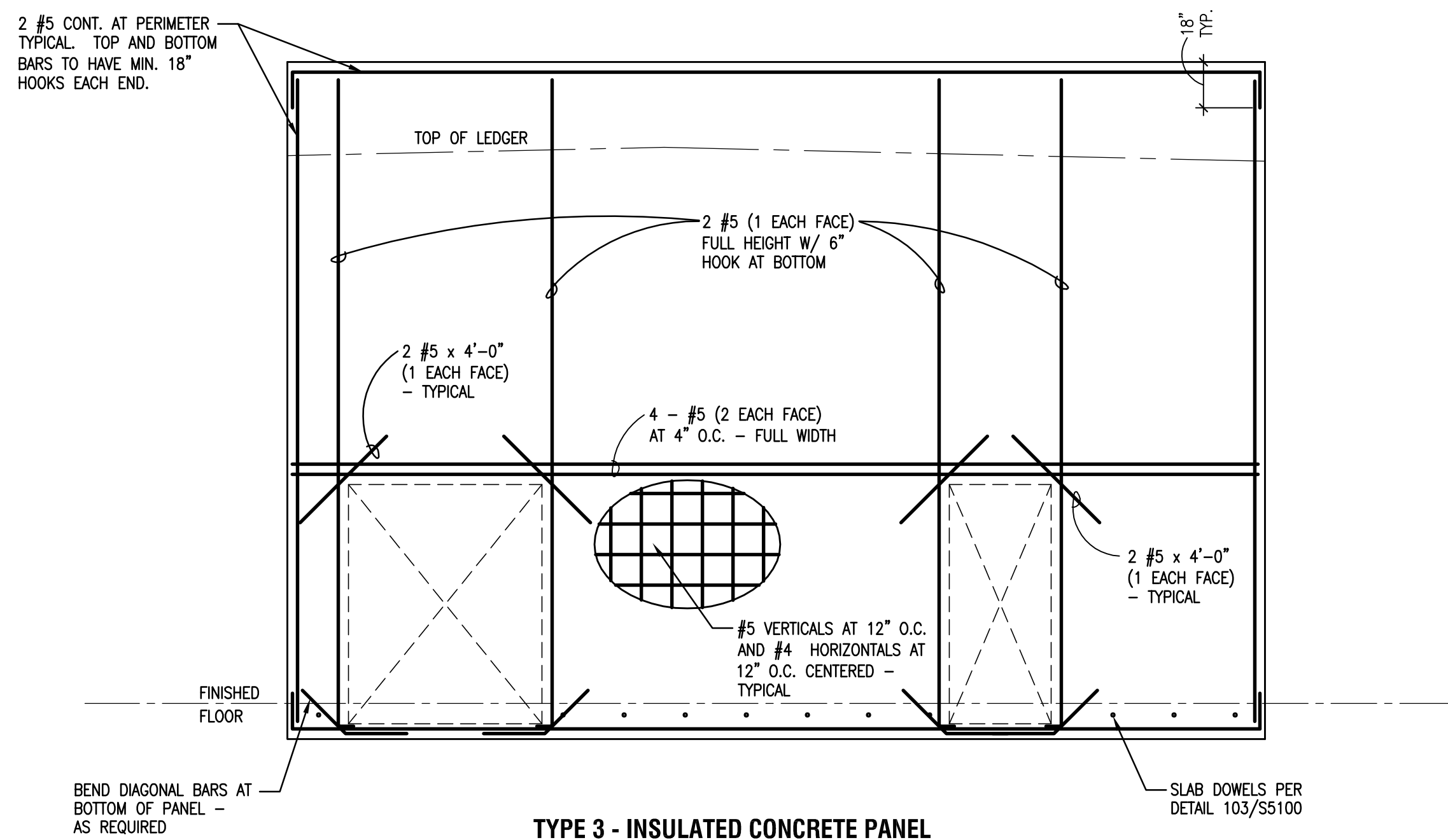
DRAWING NO.	A S 4000
-------------	----------



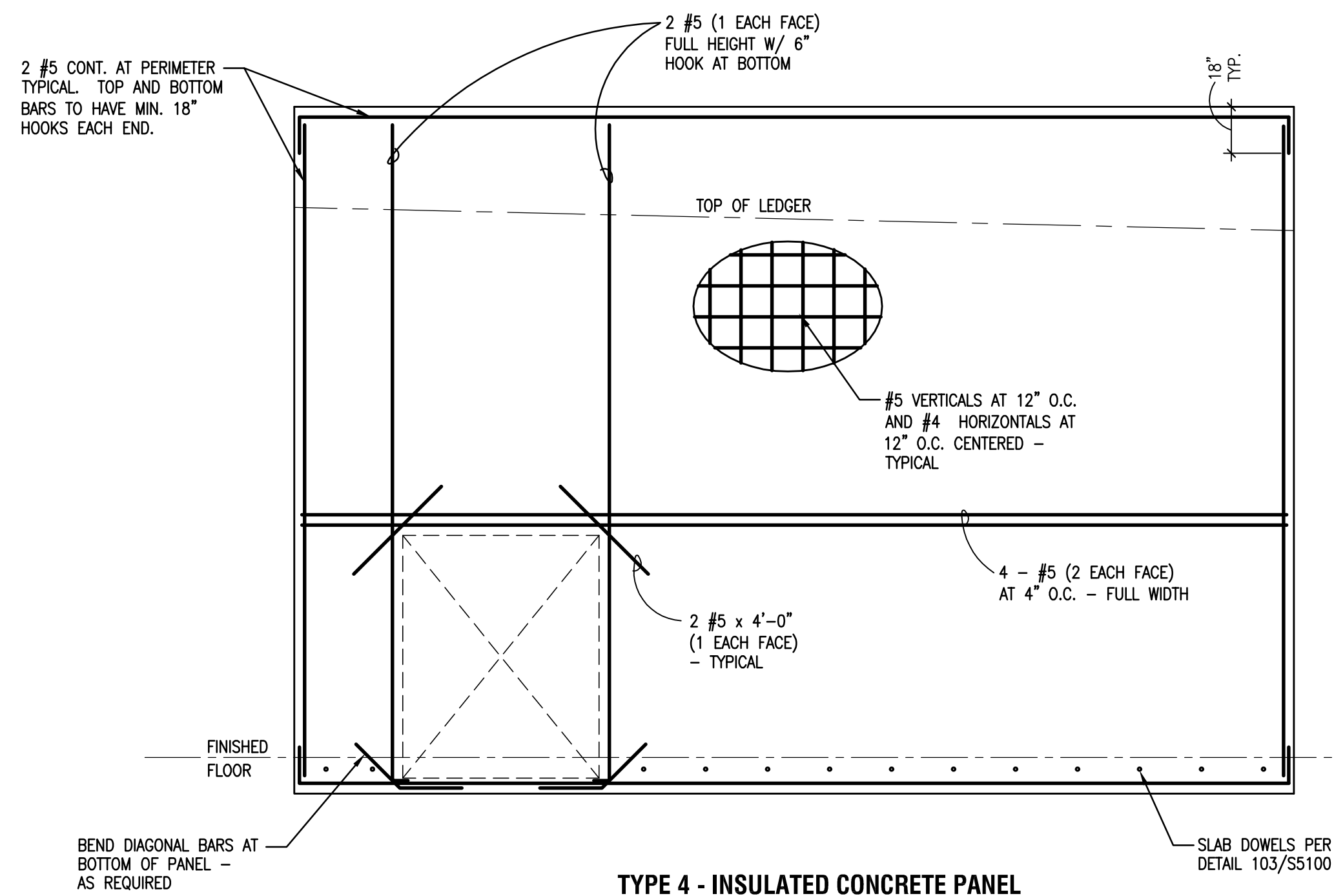
TYPE 1/1A - INSULATED CONCRETE PANEL



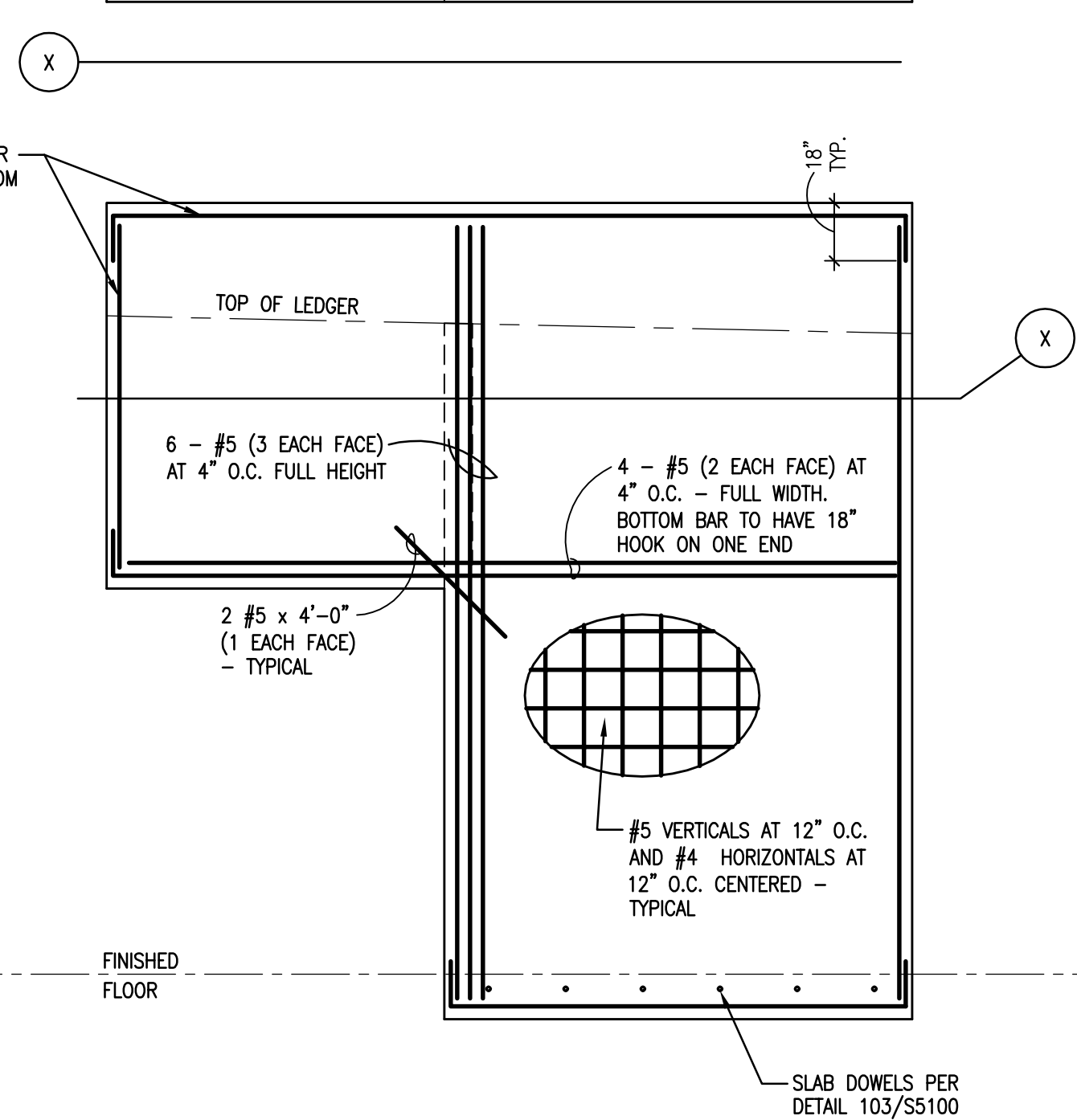
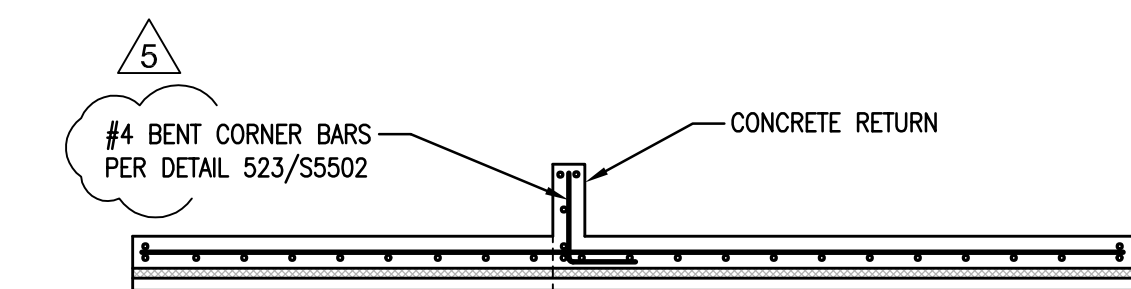
TYPE 2/2A - INSULATED CONCRETE PANEL



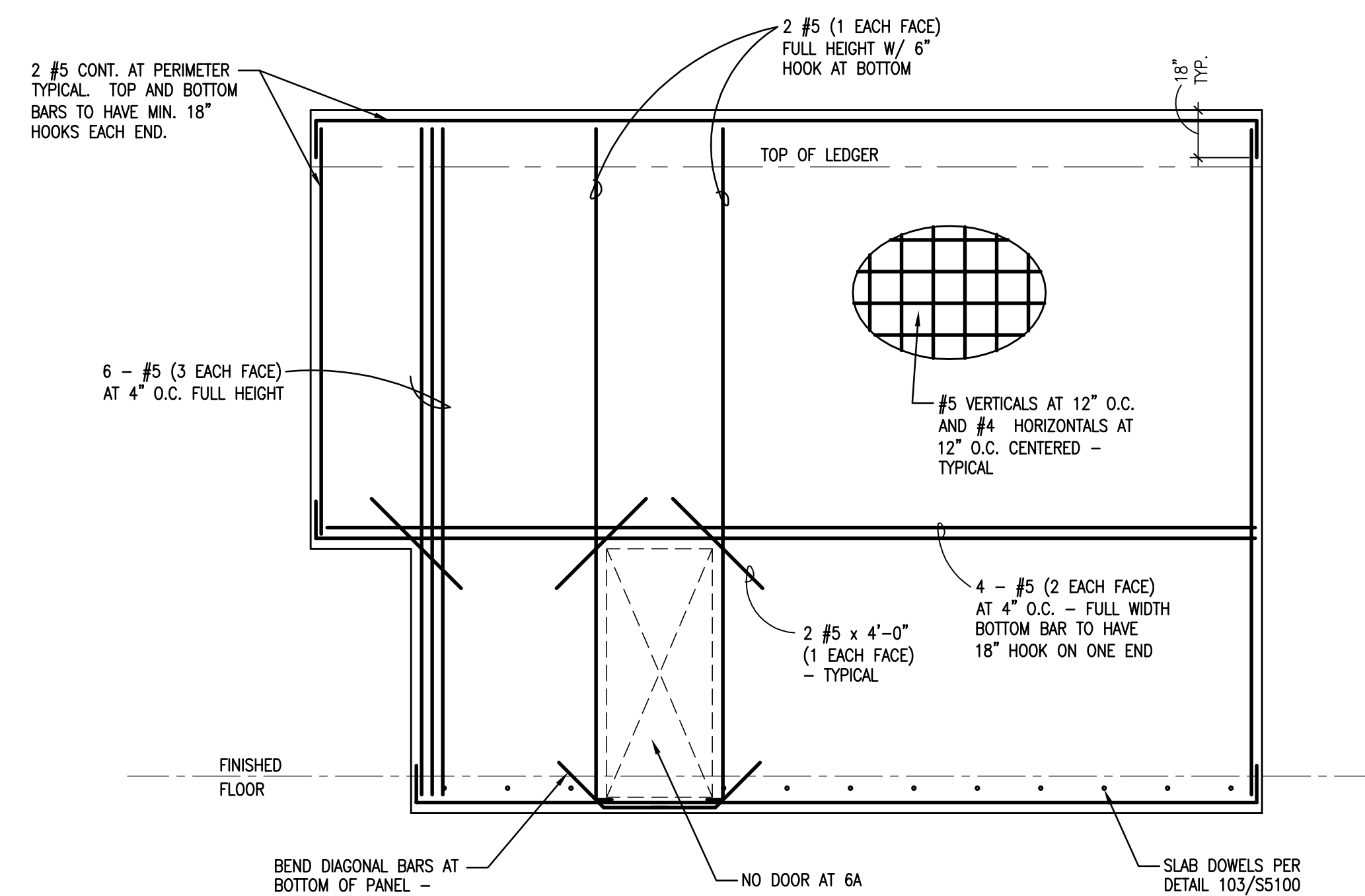
TYPE 3 - INSULATED CONCRETE PANEL



TYPE 4 - INSULATED CONCRETE PANEL



TYPE 5 - INSULATED CONCRETE PANEL



TYPE 6/6A - INSULATED CONCRETE PANEL