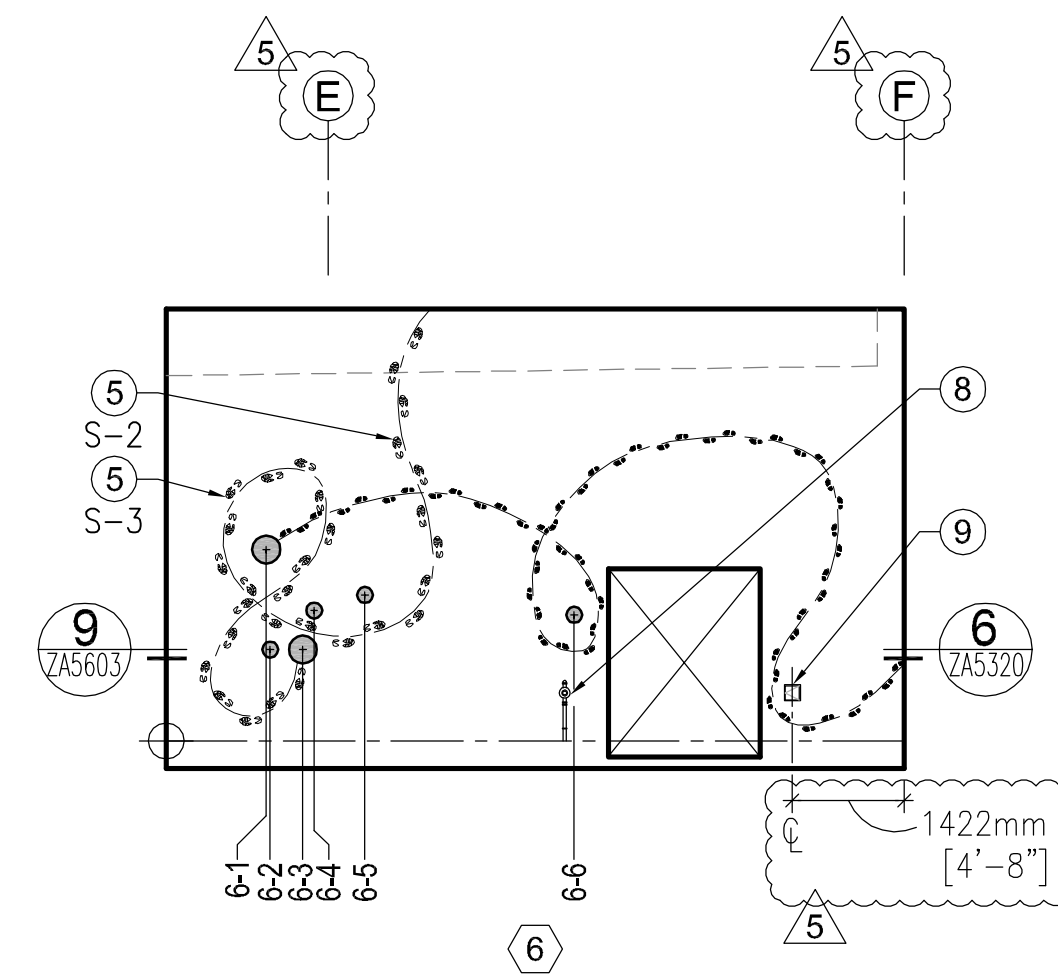
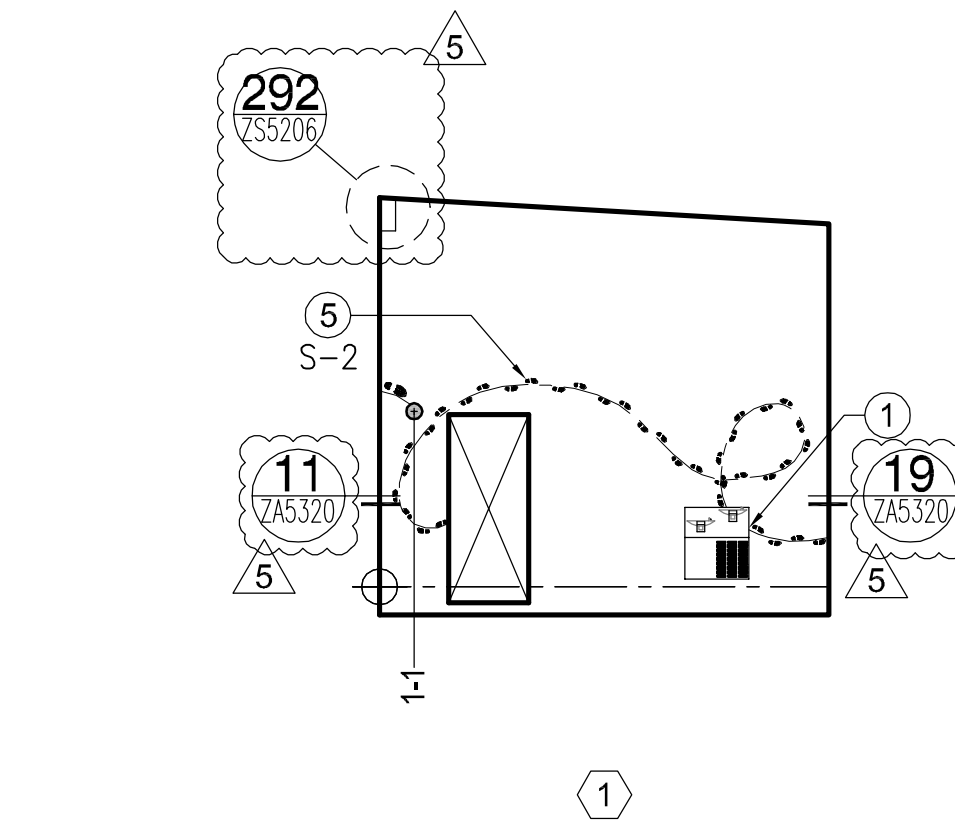


J. OUTBOUND INSPECTION BUILDING SOUTH PANEL ELEVATION 2
1/8" = 1'-0"



J. OUTBOUND INSPECTION BUILDING NORTH PANEL ELEVATION 4
1/8" = 1'-0"

J. OUTBOUND INSPECTION BUILDING EAST PANEL ELEVATION 1
1/8" = 1'-0"



GENERAL NOTES

1. ALL ARCHITECTURAL PANEL ELEVATIONS SHOW EXTERIOR FACE OF WALL. STRUCTURAL PANEL ELEVATIONS SHOW INTERIOR FACE OF WALL. COORDINATE WITH STRUCTURAL.
2. REFER TO PROJECT MANUAL FOR SCHEDULE OF CIRCULAR OPENINGS. EACH CIRCULAR OPENING IS LOCATED AT ITS CENTERPOINT FROM THE 0.0 POINT LOCATED AT THE BOTTOM LEFT CORNER ON THE EXTERIOR FACE OF EACH PANEL.
3. OVERALL PANEL DIMENSION SHOWS Q. OF JOINTS.
4. REFER TO STRUCTURAL PANEL ELEVATIONS FOR DIMENSIONS OF OVERALL PANEL.
5. QUANTITY OF SANDBLASTED SHOE PRINT PATTERNS IS AS SHOWN ON DRAWINGS.
6. 0.0 MARK IS LOCATED AT THE INTERIOR FINISH FLOOR ELEVATION.

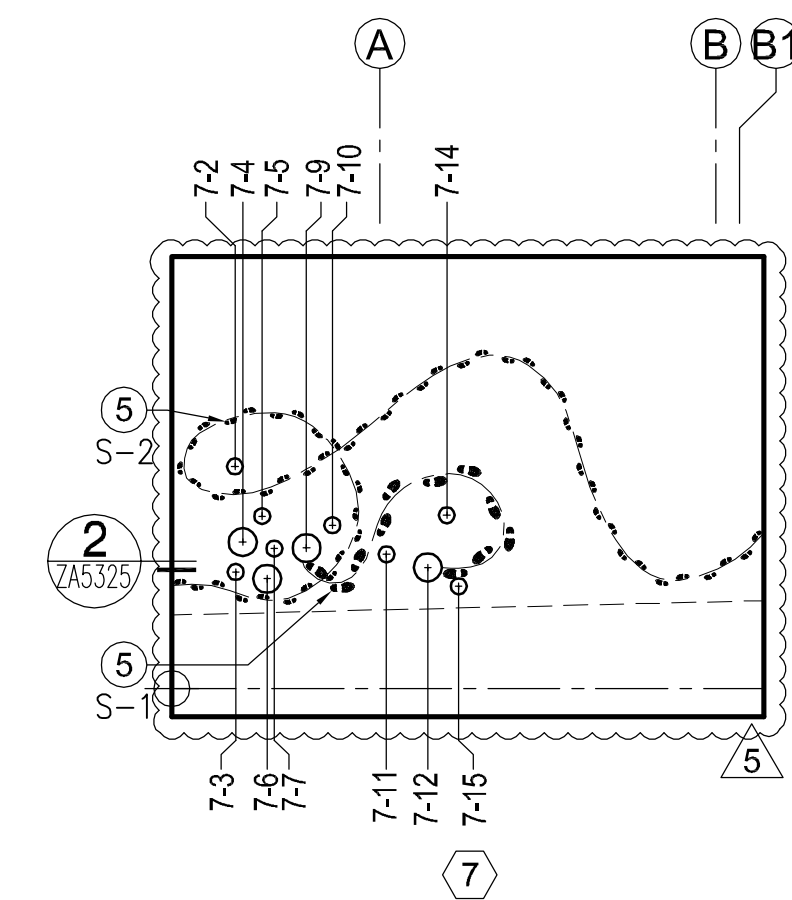
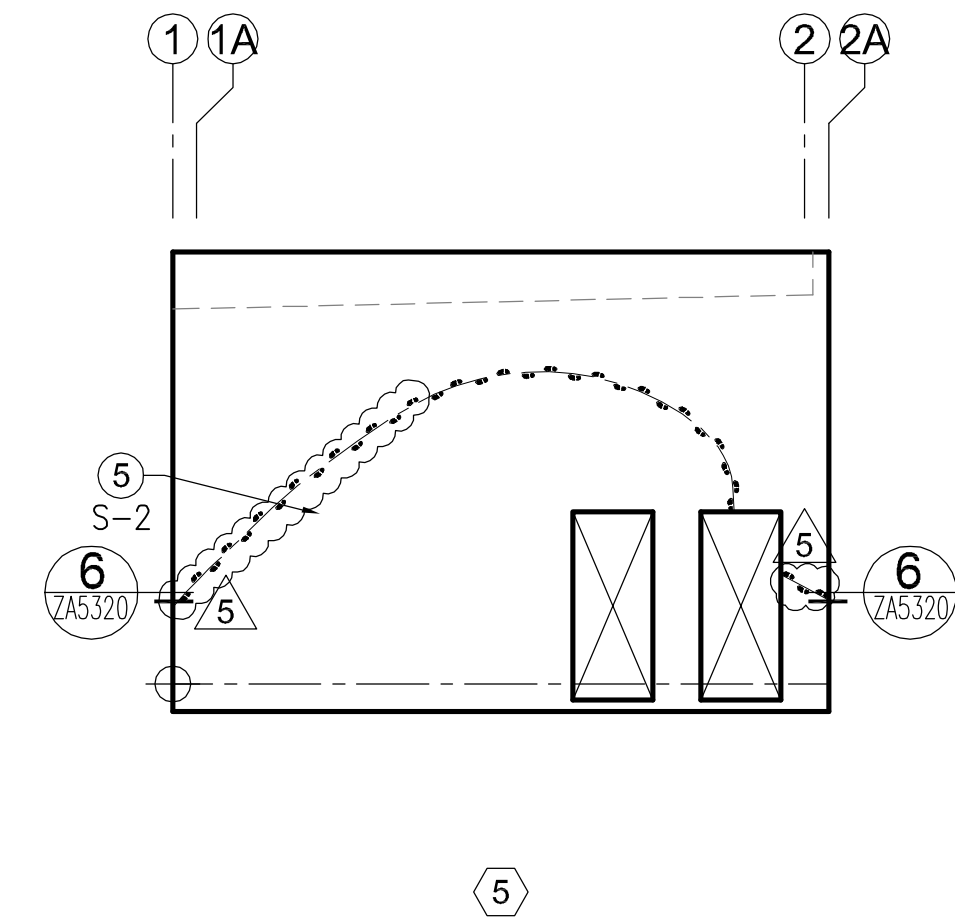
PANEL LEGEND

- CIRCULAR OPENING WITH GLAZING - REFER TO CIRCULAR OPENING SCHEDULE IN PROJECT MANUAL FOR SIZE, LOCATION AND GLAZING TYPE.
- CIRCULAR OPENING - REFER TO CIRCULAR OPENING SCHEDULE IN PROJECT MANUAL FOR SIZE AND LOCATION.
- 0.0 MARK INDICATES STARTING POINT TO LOCATE CENTERPOINT OF CIRCULAR OPENINGS ON THE EXTERIOR FACE.
- + CENTERPOINT OF OPENING.
- INTERIOR FINISH FLOOR ELEVATION.
- EXTERIOR FINISH GRADE.
- ROOF LEDGER LINE.

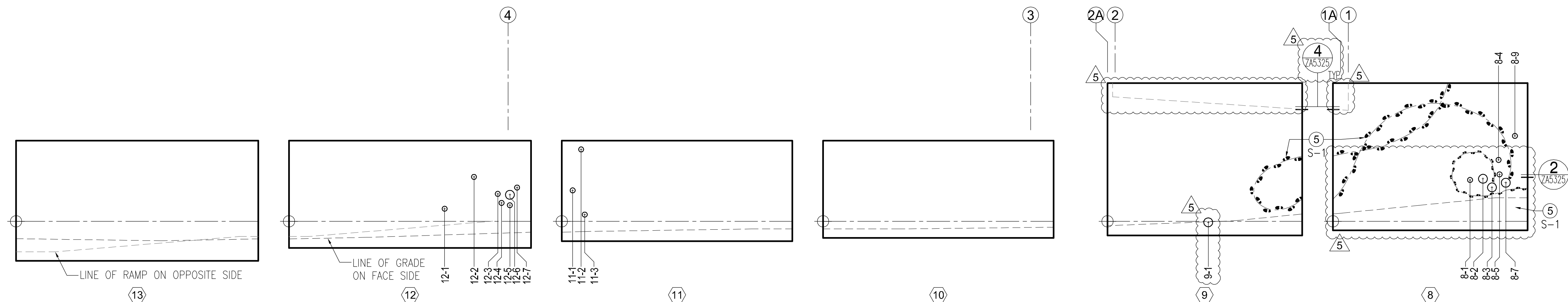
KEY NOTES

1. DRINKING FOUNTAIN, VERIFY OPENING SIZE AND HEIGHT ABOVE FINISHED EXTERIOR GRADE PRIOR TO START OF CONSTRUCTION.
2. BROKER BOXES, VERIFY OPENING SIZE AND LOCATION PRIOR TO CASTING.
3. DEAL TRAYS, VERIFY OPENING SIZE AND LOCATION PRIOR TO CASTING.
4. EMBED PLATE, REFER TO STRUCTURAL FOR LOCATION AND COORDINATE WITH JOISTS AT ELEVATIONS.
5. SANDBLASTED SHOE PRINT PATTERN, REF. 3/ZAS320.
6. SCUPPER OPENING, VERIFY DECK HEIGHT PRIOR TO CASTING.
7. FIRE PROTECTION EQUIPMENT, REF. FIRE PROTECTION.
8. GAS REGULATOR, REF. PLUMBING.
9. HOSE BIBB CABINET, REF. 18/ZAS320 & PLUMBING.
10. MECHANICAL OPENING, VERIFY OPENING SIZE AND LOCATION PRIOR TO CASTING.
11. CONCRETE RETURN, REF. STRUCTURAL.
12. STEEL ANGLE CORNER GUARD - CAST INTO WALL, EA. SIDE.
13. RECESSED LIGHT FIXTURE, REF. 5/ZAS325 & ELECTRICAL.

J. OUTBOUND INSPECTION BUILDING WEST PANEL ELEVATION 3
1/8" = 1'-0"



J. OUTBOUND INSPECTION BUILDING NORTH SITE WALL PANEL ELEVATION 5
1/8" = 1'-0"



J. OUTBOUND INSPECTION BUILDING EAST SITE WALL PANEL ELEVATION 6
1/8" = 1'-0"

SENSITIVE BUT UNCLASSIFIED (SBU) PROPERTY OF THE UNITED STATES GOVERNMENT. COPYING, DISSEMINATION, OR DISTRIBUTION OF THIS DOCUMENT TO UNAUTHORIZED RECIPIENTS IS PROHIBITED. DO NOT REMOVE THIS NOTICE. PROPERLY DESTROY OR RETURN DOCUMENTS WHEN NO LONGER NEEDED.

CERTIFICATIONS		
KEY PLAN		
REVISION NOTES		
MARK	DATE	DESCRIPTION
Δ	02/12/10	ADDENDUM #2
Δ	06/28/10	DESIGN CLARIFICATIONS
ADDENDUM DELTA TYPES		
Δ	ISSUED BY ADDNM. SKETCH OR BY RE-ISSUED SHEET	
Δh	ISSUED BY ADDNM. NARRATIVE (TEXT) ONLY	
Δb	ISSUED BY ADDNM. RESPONSE TO BIDDER QUESTION ONLY	
GRAPHIC SCALE		
<div>04'16'</div> <div>2'8'20'</div>		
CONTRACTORS		
BUILDING		
PROJECT		
DRAWING		
DRAWING TITLE	J. OUTBOUND INSPECTION ELEVATIONS	
FILE NAME	J-A2100-NAZ00001.DWG	
FLOOR NO.	01	
DRAWN BY	DATE DRAFTED: 01/03/2010	
CHECKED BY	SHEET SIZE: 30 X 42	
DRAWING NO.	J A 2100	
	PACKAGE	DISC. TYPE SHEET NO.

FOR CONSTRUCTION