



**Hensel Phelps
Construction Co.**

Mariposa Land Port of Entry Expansion and Modernization- Phase 2-4

HPCC Jobsite Office
346 N Mariposa Road
Nogales, AZ 85621

Phone: 520.287.8922
Fax: 520.287.8926

Submittal Transmittal Notice

Subject: Mock-up Steel Storefront Shop Drawings

Date: 03/14/11

Submittal Number: 084123-02-00

Status: Reviewed as Noted

To: Subcontractor – Contact

<input type="checkbox"/> SH Steel – JARED@shsteelaz.com	<input checked="" type="checkbox"/> HPCC-MLPOE Staff
<input type="checkbox"/> S Diamond Steel – Bsantana@sdiamondsteel.com	<input type="checkbox"/> CMC Rebar – jesse.marquez@cmc.com
<input type="checkbox"/> Midstate Mechanical- tcecchin@midstatemechanical.com	<input type="checkbox"/> CMC Rebar – Edwin.lacy@cmc.com
<input type="checkbox"/> Gaylor Electric- rwhite@gaylor.com	<input type="checkbox"/> ACS Services – drew@acs-servicesllc.com
<input type="checkbox"/> W. J. Maloney – swilson@wjmaloney.com	<input type="checkbox"/> Dowl HKM – myork@dowlhkm.com
<input type="checkbox"/> Kazal Fire Protection- jim@kazalfire.com	<input type="checkbox"/> Maveric Masonry – elmirage@maverickmasonry.com
<input type="checkbox"/> Durrant- bblack@durrant.com	<input type="checkbox"/> GRG Construction – ggreer@grgconcrete.com
<input type="checkbox"/> Sprayfoam Southwest- craigb@sprayfoamsouthwest.com	<input type="checkbox"/> Par Kut – shaune@parkut.com
<input type="checkbox"/> Applied Rite Doors & Docks, Inc. – bgertsch@appliedrite.com	<input checked="" type="checkbox"/> Border Glass – Lisabanner@borderglass.com
<input type="checkbox"/> Cookson Door Sales of Arizona – mconsalvi@cooksonaz.com	<input type="checkbox"/>
<input type="checkbox"/> Larson Systems, Inc. – brucehill@larsonsystems.com	<input type="checkbox"/>
<input type="checkbox"/> Sierra Detention Systems – jerbes@sierradetentions.com	<input type="checkbox"/>
<input type="checkbox"/> CADCon Drafting – jocadcon@cox.net	<input type="checkbox"/>

Please carefully review the attached Submittal and assess for cost and/or schedule impacts. If required, submit a detailed cost estimate including quantity survey and unit costs for labor, fringe benefits, schedule accommodations, material, taxes, equipment rental, bonds, overhead, profit and all other costs to complete the change in your scope of work in accordance with the Contract Documents and the terms of your Agreement with Hensel Phelps Construction Co. If markups and/or unit prices have been specified in your Agreement, please follow them when completing your pricing.

☐ Proceed immediately with the attached change(s) and notify our jobsite office of any cost and/or schedule impacts within three (3) days of the above date.

☐ Do not proceed with the attached change(s). Provide a complete price breakdown and schedule impact analysis within three (3) days of the above date.

☒ Proceed immediately with the information contained in the attached Document(s). No cost or schedule impact is anticipated. Please confirm within three (3) days of the above date.

Please respond whether or not there is an impact to your cost or schedule. **If no response is received by the requested date, Hensel Phelps Construction Co. will conclude that there are no cost or schedule impacts associated with the item(s) listed above.**

Should you have any questions regarding the above, please contact the undersigned.

Sincerely,

HENSEL PHELPS CONSTRUCTION CO.

Glen Gleason
Office Engineer

SUBMITTAL REVIEW # 084123-02-00

HEERY

Heery International, Inc.

Project Mariposa LPOE Expansion and Modernization: Phase 2-4
Contract No. GS-09P-10-KT-C-0005
Spec. Section 084123-02-00 Mock Up Store Front Shops
Reviewer TD
Submittal Date 2011-2-28
Received Date 2011-2-28
Review Date 2011-3-01
A/E Due Date 2011-3-17 (reference ePM)
Sheet 1 of 1

THIS REVIEW IS SOLELY FOR GENERAL CONFORMANCE WITH THE GSA CONTRACT DOCUMENTS. CONTRACTOR IS RESPONSIBLE FOR: QUANTITIES AND DIMENSIONAL ACCURACY, TO BE CONFIRMED AND CORRELATED AT THE JOBSITE; INFORMATION THAT PERTAINS SOLELY TO THE FABRICATION PROCESSES OR TO THE MEANS, METHODS, TECHNIQUES, SEQUENCES, AND PROCEDURES OF CONSTRUCTION; COORDINATION OF THE WORK OF ALL TRADES; AND FOR PERFORMING ALL WORK IN A SAFE AND SATISFACTORY MANNER.

RECEIVED

03.01.2011

Jones Studio, Inc. - Architecture

RECEIVED

Mar 14, 2011



Hensel Phelps Construction Co.

☒ Reviewed ☐ Reviewed with Comments ☐ Rejected ☐ Revise and Resubmit ☐ Not reviewed

CM Description/ Comments:

1. No comments.
- 2.
- 3.
- 4.
- 5.
- 6.
- 7.
- 8.
- 9.
- 10.
- 11.
- 12.
- 13.
- 14.

☐ Additional sheets are attached

General Services Administration

☐ Reviewed ☐ Reviewed with Comments ☐ Rejected ☐ Revise and Resubmit ☒ Not reviewed

GSA & Tenant Description/Comment :

JSI Comments:

- 1) Reference comments throughout this submittal.

REVIEWED ☐

REVIEWED AS NOTED ☒

NOT REVIEWED ☐

If checked above, fabrication MAY be undertaken. Review does not authorize changes to the Contract Sum and or Contract Schedule.

If checked below, fabrication MAY NOT be undertaken. Resubmit noted copies for final review. Indicate clearly any modifications to the Contract Documents beyond those requested.

REVISE AND RESUBMIT ☐

SUBMITTAL NOT ACCEPTABLE ☐

Review of submittals is only for conformance with design concepts and compliance with information given in the Contract Documents. Review shall not relieve the Contractor of his responsibility to comply with the Contract Documents. Contractor is responsible for dimensions to be confirmed and correlated at site; for information that pertains solely to the fabrication process or to the means, methods, techniques, sequences and procedures of construction, and coordination of the work of all trades.

JONES STUDIO, INC. - ARCHITECTURE

Date 03.11.2011 By BF



**Hensel Phelps
Construction Co.**

Submittal Package Information

Submission Date: **28-Feb-2011** Anticipated Return: **16-Mar-2011**

Owner: **GSA - Contract #GS09P10KTC0005**

Project: **Mariposa LPOE Expansion & Modernization - Phase 2-4**

General Contractor: **Hensel Phelps Construction Co.**
346 N. Mariposa Rd
Nogales, AZ 85621

Subcontractor: **Border Glass and Aluminum**

Supplier: **CAID Industries**

Specification: **08 41 23**

Description: **Mock-up Steel Storefront Shop Drawings**

Submittal #: **084123-02-00** ☒ **HOT**

Comments:

08 41 23 1.04.A.1 Mock-up Shop Drawings

Submittal Stamp

HENSEL PHELPS CONSTRUCTION CO.

<input checked="" type="checkbox"/> Reviewed	<input type="checkbox"/> No Exceptions Taken
<input type="checkbox"/> Revise & Resubmit	<input type="checkbox"/> Make Corrections Noted
	<input type="checkbox"/> Rejected

THIS SUBMITTAL HAS BEEN REVIEWED FOR GENERAL COMPLIANCE WITH THE CONTRACT DOCUMENTS. APPROVAL DOES NOT RELIEVE THE SUBCONTRACTOR/SUPPLIER OF THE RESPONSIBILITY FOR CONFORMANCE TO THE QUALITY STANDARDS AS SET FORTH IN THE CONTRACT DOCUMENTS NOR DOES IT RELIEVE RESPONSIBILITY FOR FIELD VERIFICATION OF ALL CONDITIONS RELATING TO THE WORK OF SUBCONTRACTOR/SUPPLIER. SUBCONTRACTOR/SUPPLIER IS RESPONSIBLE FOR DIMENSIONS AND QUANTITIES OF MATERIALS RELATING TO THIS CONTRACT.

Checked By: Glen Gleason Date: 28-Feb-11

Submittal #: 084123-02-00

This Stamp Applies to All Pages
In This Submittal.

Sensitive but Unclassified (SBU)

Property of the United States Government
Copying, dissemination, or distribution of this
document to unauthorized recipients is prohibited.
Please properly destroy or return documents when
no longer needed.



Site Operations Office
346 Nogales Road
Nogales, AZ 85621

Corporate Office
1166 E. Warner Road Ste. 210
Gilbert, Arizona 85234

Mariposa LPOE

Transmittal

Number	S-026
Date	2/21/2011

TO: **Hensel Phelps Construction**
346 Nogales Road, Nogales, AZ 85621

Reference to: ☒ Mariposa LPOE

ATTENTION: Glenn Gleason

FROM: Jason Lennox

Border Glass & Aluminum is sending the following ,

☒ ATTACHED ☐ UNDER SEPARATE COVER

VIA ☒ EMAIL AND SCAN

☒ Shop Drawings

☐ FAX

☐ Samples

☐ Hand Delivered

☐ Technical Data or other Product Information and Documents

☐ Other

COPIES	DESCRIPTION
Spec Section 84123.13 - Bullet-Resistant Steel Entrances and Storefronts	
1	PDF File - Mock-up Shop Drawings. Sheets EMU1, EMU2, E1, E2, E3

☒ FOR REVIEW AND COMMENT

☒ APPROVAL

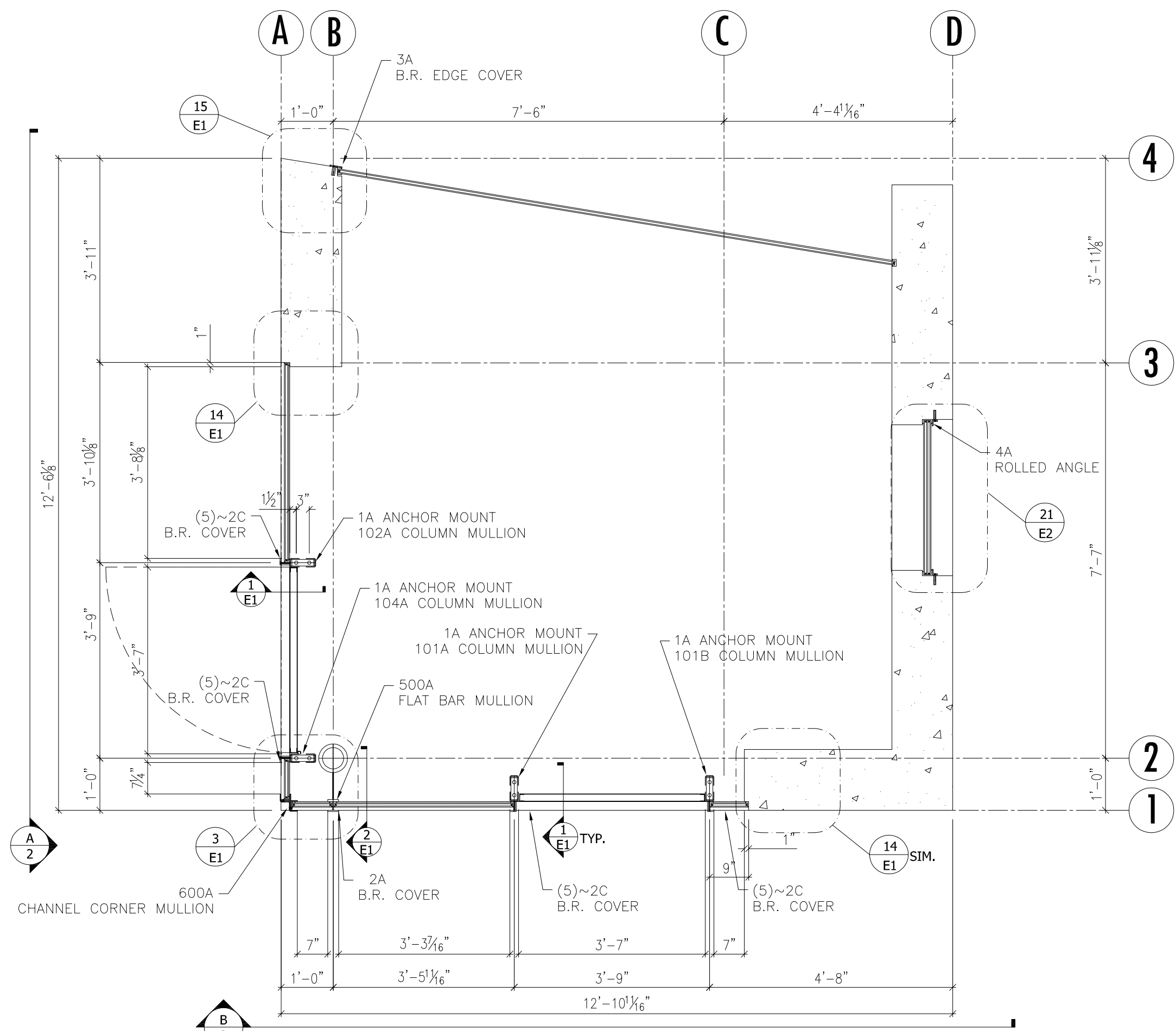
AS ☒ REQUIRED BY CONTRACT

FOR INFORMATION ☐

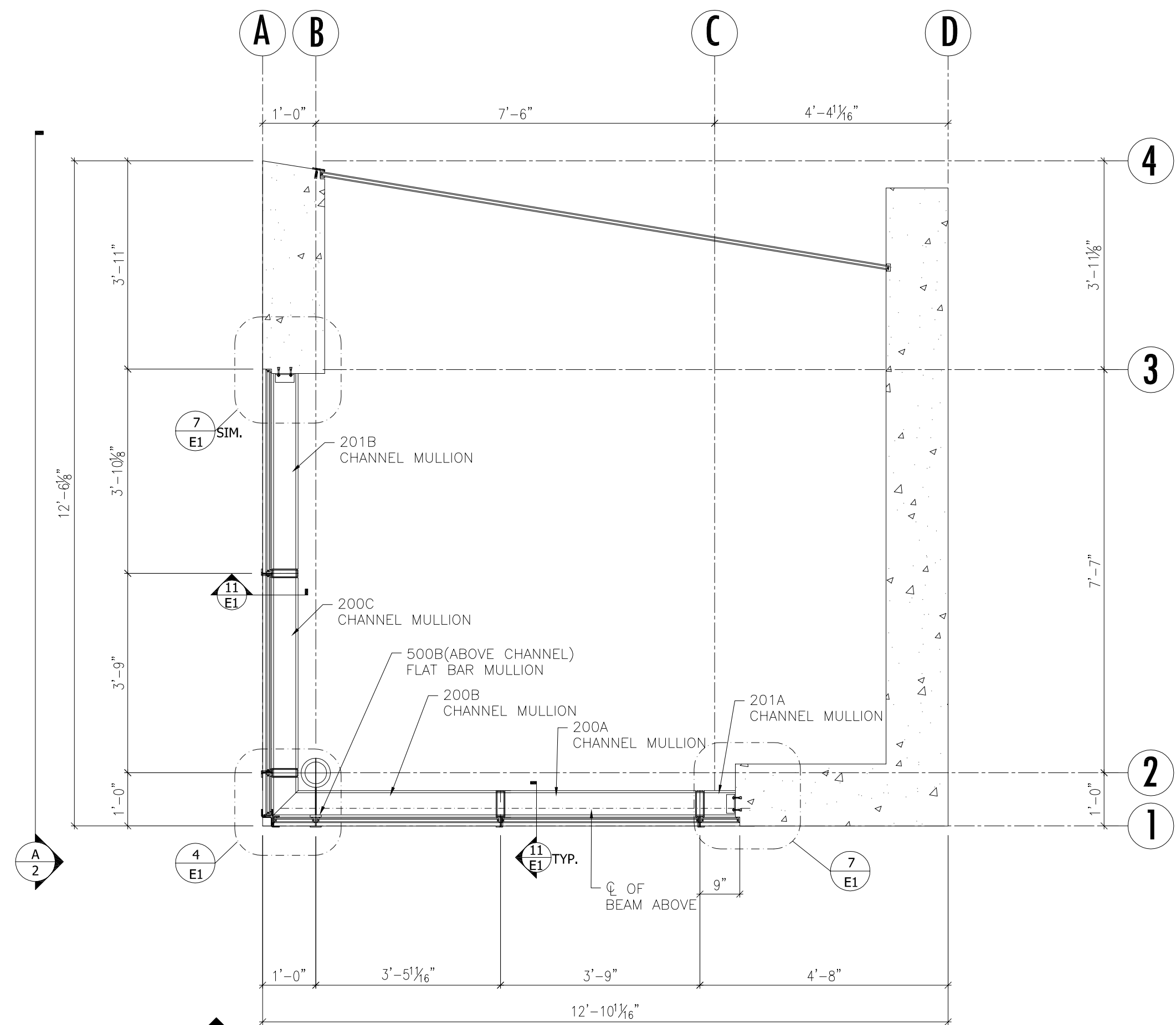
REMARKS:

SIGNED: Jason Lennox
Border Glass & Aluminum, Inc.

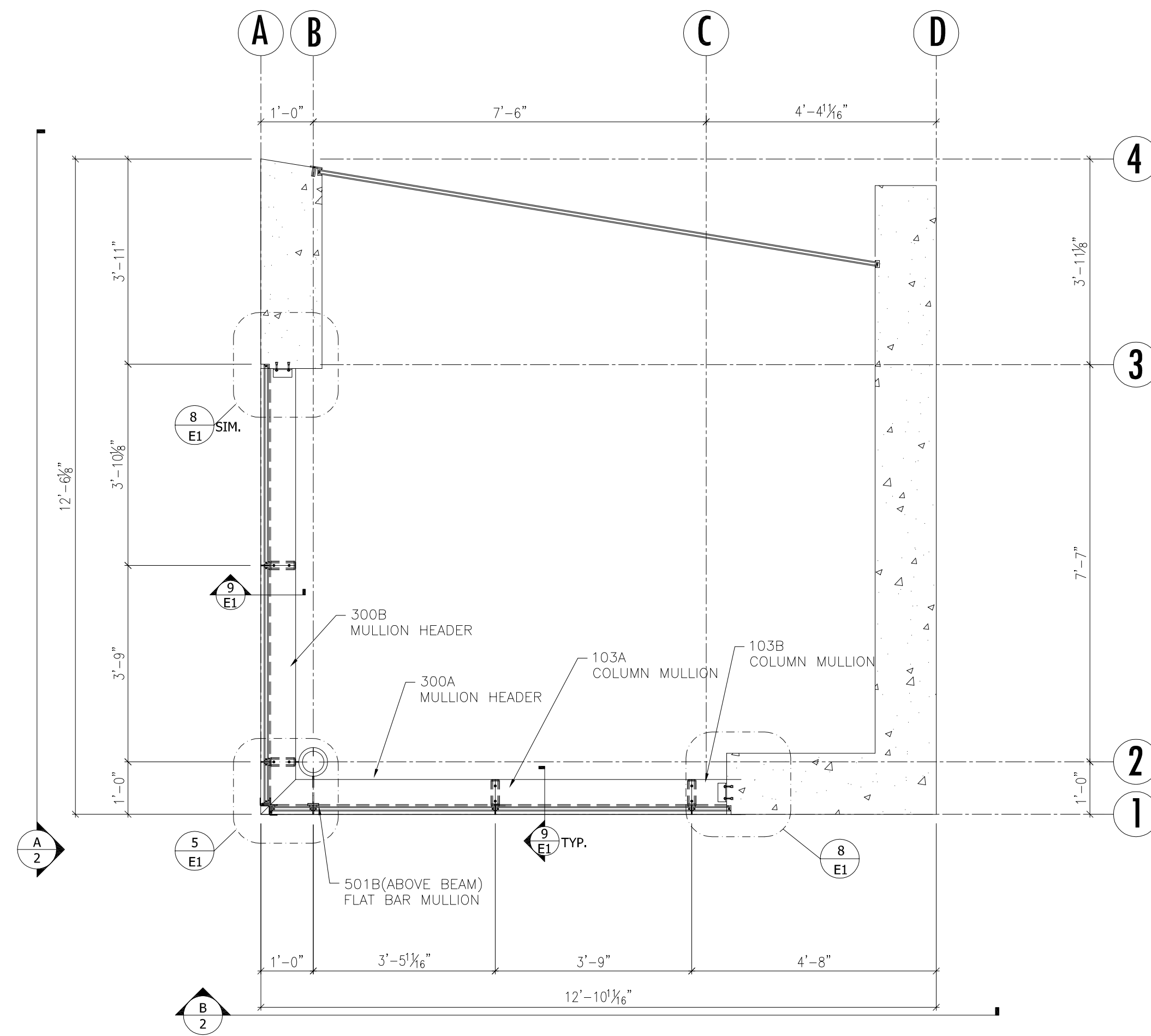
SIGNED: _____
Hensel Phelps



A MOCK-UP ANCHOR BOLT PLAN
Scale 1/2" = 1'-0"



B MOCK-UP PLAN @ ELEV. 7' - 0
Scale 1/2" = 1'-0"



C MOCK-UP PLAN @ HEADER
Scale 1/2" = 1'-0"

MK	Qty	Description	Total Wts
1A	4	ANCHOR PLATES	5
2A	1	BR COVER PL	45
2C	20	BR COVER PL	20
3A	1	BR EDGE COVER PL	15
4A	1	ROLLED ANGLE STOP	9
100B	3	MULLION COLUMN	306
102A	1	MULLION COLUMN	198
103A	1	MULLION COLUMN	50
103B	1	MULLION COLUMN	51
104A	1	MULLION COLUMN	198
200A	1	MULLION CHANNEL	49
200B	1	MULLION CHANNEL	62
200C	1	MULLION CHANNEL	62
201B	1	MULLION CHANNEL	50
300A	2	MULLION HEADER	64
300B	1	MULLION HEADER	33
400A	2	ANGLE STOP	20
400B	1	ANGLE STOP	10
400C	2	ANGLE STOP	5
500A	1	FLAT BAR MULLION	49
500B	1	FLAT BAR MULLION	8
501B	1	FLAT BAR MULLION	15
600A	1	FORMED CORNER COVER MULLION	118
TOTAL WT			1442

Glazing Schedule

Glaz-1A: 1/4" Clear FT
 Glaz-1B: 3/8" Clear FT
 Glaz-1C: 1/2" Clear FT
 Glaz-1D: 1/2" Clear FT
 Glaz-2: 1/2" Guardian Crystal Gray FT
 Glaz-3A: 1/2" Clear Laminated: 1/8" Clear FT - .030 PVB clear - 1/8" FT
 Glaz-3B: 1/2" Frosted Laminated: 1/8" Clear FT - .030 frosted PVB - 1/8" Clear FT
 Glaz-3C: 1/2" Crystal Gray Laminated: 1/2" Clear FT - .030 clear PVB - 1/2" Crystal Gray FT
 Glaz-3D: 1/2" Frosted Crystal Gray Laminated: 1/2" Clear FT - .030 - frosted PVB - 1/2" Crystal Gray FT
 Glaz-4: 1" OA IG: 1/2" Crystal Gray FT - 1/2" Air Space Clear - 1/2" Guardian Sunguard SM68 FT
 Glaz-5: 13/16" Clear NIJ Bullet Resistant
 Glaz-6A: 13/16" Crystal Gray NIJ Bullet Resistant
 Glaz-6B: 13/16" Crystal Gray NIJ Bullet Resistant with Frosted PVB
 Glaz-7: 1-9/16" OA IG: 13/16" Crystal Gray BR - 1/2" Air space - 1/2" Clear FT
 Glaz-8: 13/16" Crystal Gray Laminated w/ SM68: 3/8" Crystal Gray FT - .060 Clear PVB - 3/8" SM68 FT
 Glaz-9: 1-1/16" Crystal Gray Laminated: 1/2" Crystal Gray FT 0 .060 Clear PVB - 1/2" SM68 FT
 Glaz-10: 1-5/8" OA IG Crystal Gray Laminated SM68: Outboard of 3/8" SM68 FT - 1/2" Air Space Clear- Inboard of 3/8" SM68 - .060 Clear - PVB - 3/8" Crystal Gray FT
 Glaz-11: 1-11/16" Laminated, Tinted Obscure, Insulated Bullet Resistant

- Notes:**
- Dimensions are in Feet/Inches
 - Shop tolerances after welding to be $\pm 1/16"$
 - All welds to be in accordance with AWS D1.1.
 - Materials are A36 for Angle and Plate U.N.O.. TS to be A500 GrB, MC Channel to be A572 Gr50.
 - All parts shall be smooth and free of burrs & spatter
 - All dimensions to be field verified by others.
 - All clouded dimensions and request for verifications will be assumed correct U.N.O.
 - All parts will be shipped blasted and painted single coat of primer with Gal-Alum 43-7 Metal gray Primer.Touch up and finish to be done in field by others.
 - Refer to Erection Details(E1-E2) for all standard sections and plan details.

- Notes BY BG:**
- System Designed By Border Glass to 1/2" Deflection at Head.
 - Concrete Floor Tolerance = 3/8" in 10 feet.
 - Edge Clearance at Glass Pockets to be $\pm 1/4"$ Min.

FOR APPROVAL 2/18/11



6201 294-4125 (PH)
 6207 294-4886 (FW)
 2275 E. GALEY ROAD
 TULSA, OK 74106
 WWW.SAID.COM

ALL DIMENSIONS UNLESS NOTED ARE IN INCHES. DIMENSIONS SHOWN ON THIS DRAWING ARE THE RESULT OF A DESIGN ANALYSIS. IT IS NOT TO BE USED FOR CONSTRUCTION WITHOUT THE APPROVAL OF A LICENSED PROFESSIONAL ENGINEER. NO PART OF THIS DRAWING IS TO BE REPRODUCED OR TRANSMITTED IN ANY FORM OR BY ANY MEANS, ELECTRONIC OR MECHANICAL, WITHOUT PERMISSION IN WRITING FROM SAID & COMPANY.

BORDER GLASS & ALUMINUM INC.

MARIPOSA LPOE EXPANSION

MOCK-UP E-PLANS

REF: ZA5433 ZA5434 REV5

Drawing

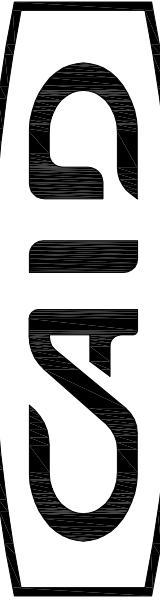
E-MU1

Sheet

1 of 1

Rev

A



6200 294-4325 (PH)
6200 294-4380 (FW)
2275 E. GALEY ROAD
TAMPA, FL 33613
WWW.SAID.COM

ALL DIMENSIONS UNLESS NOTED OTHERWISE. MANUFACTURING TOLERANCES: 1/8" FOR ANGLES, 1/16" FOR
CHANNELS, 1/32" FOR BOLTS. ALL DIMENSIONS TO CENTER UNLESS NOTED OTHERWISE. MATERIALS TO BE USED AS NOTED OR
EQUIVALENT. SEE ERECTION DETAILS (E1-E2) FOR ALL STANDARD SECTIONS AND PLAN DETAILS.

MK	Qty	Description	Total Wts
1A	3	ANCHOR PLATES	3
2A	5	BR COVER PL	45
3A	1	BR EDGE COVER PL	15
4A	1	ROLLED ANGLE STOP	9
5A	1	B.R. METAL PANEL	200
100B	3	MULLION COLUMN	306
102A	1	MULLION COLUMN	196
103A	1	MULLION COLUMN	50
103B	1	MULLION COLUMN	51
200A	1	MULLION CHANNEL	49
200B	1	MULLION CHANNEL	62
200C	1	MULLION CHANNEL	62
201A	1	MULLION CHANNEL	8
201B	1	MULLION CHANNEL	50
300A	2	MULLION HEADER	64
300B	1	MULLION HEADER	33
300C	1	MULLION HEADER	7
301A	1	MULLION HEADER	40
301B	1	MULLION HEADER	40
400A	4	ANGLE STOP	20
400B	2	ANGLE STOP	1
400C	4	ANGLE STOP	1
500A	2	FLAT BAR MULLION	98
500B	1	FLAT BAR MULLION	8
501A	1	FLAT BAR MULLION	29
501B	1	FLAT BAR MULLION	15
600A	1	FLAT BAR CHANNEL MULLION	118
		TOTAL WT	1580

Glazing Schedule

Glaz-1A: 1/4" Clear FT
Glaz-1B: 3/8" Clear FT
Glaz-1C: 1/4" Clear FT
Glaz-1D: 1/4" Clear FT
Glaz-2: 1/4" Guardian Crystal Gray FT
Glaz-3A: 1/4" Clear Laminated: 1/8" Clear FT - .030 PVB clear -
1/8" Clear FT
Glaz-3B: 1/4" Frosted Laminated: 1/8" Clear FT - .030 frosted PVB -
1/8" Clear FT
Glaz-3C: 1/4" Crystal Gray Laminated: 1/4" Clear FT - .030 clear PVB -
1/4" Crystal Gray FT
Glaz-3D: 1/4" Frosted Crystal Gray Laminated: 1/4" Clear FT - .030 -
frosted PVB - 1/4" Crystal Gray FT
Glaz-4: 1" OA IG: 1/4" Crystal Gray FT - 1/4" Air Space Clear - - -
1/4" Guardian Sunguard S668 FT
Glaz-5: 13/16" Clear NIJ Bullet Resistant
Glaz-6A: 13/16" Crystal Gray NIJ Bullet Resistant
Glaz-6B: 13/16" Crystal Gray NIJ Bullet Resistant with Frosted PVB
Glaz-7: 1-9/16" OA IG: 13/16" Crystal Gray BR - 1/4" Air Space - 1/4" -
Clear FT
Glaz-8: 13/16" Crystal Gray Laminated w/ S668: 3/8" Crystal Gray FT -
.060 Clear PVB - 3/8" S668 FT
Glaz-9: 1-1/16" Crystal Gray Laminated: 1/2" Crystal Gray FT 0 .060
Clear PVB - 1/2" S668 FT
Glaz-10: 1-5/8" OA IG Crystal Gray Laminated S668: Outboard of 3/8"
S668 FT - 1/2" Air Space Clear- Inboard of 3/8" S668 - -
060 Clear - PVB - 3/8" Crystal Gray FT
Glaz-11: 1-11/16" Laminated, Tinted Obscure, Insulated Bullet - -
Resistant

Notes:

- Dimensions are in Feet/Inches
- Shop tolerances after welding to be $\pm \frac{1}{16}$ "
- All welds to be in accordance with AWS D1.1
- Materials are A36 for Angle and Plate U.N.O..
TS to be A500 GrB. MC Channel to be A572 Gr50.
- All parts shall be smooth and free of burrs & spatter
- All dimensions to be field verified by others.
- All clouded dimensions and request for verifications will be assumed correct U.N.O.
- All parts will be shipped blasted and painted single coat of primer with Gal-Alum 43-7 Metal gray Primer.Touch up and finish to be done in field by others.
- Refer to Erection Details(E1-E2) for all standard sections and plan details.

Notes BY BG:

- System Designed By Border Glass to $\frac{1}{2}$ " Deflection at Head.
- Concrete Floor Tolerance = $\frac{3}{8}$ " in 10 feet.
- Edge Clearance at Glass Pockets to be $\pm \frac{1}{4}$ " Min.

FOR APPROVAL 2/18/11

BORDER GLASS & ALUMINUM INC.
MARIPOSA LPOE EXPANSION
MOCK-UP E-PLANS

REF: ZAS433 ZAS434 REV5

Drawing

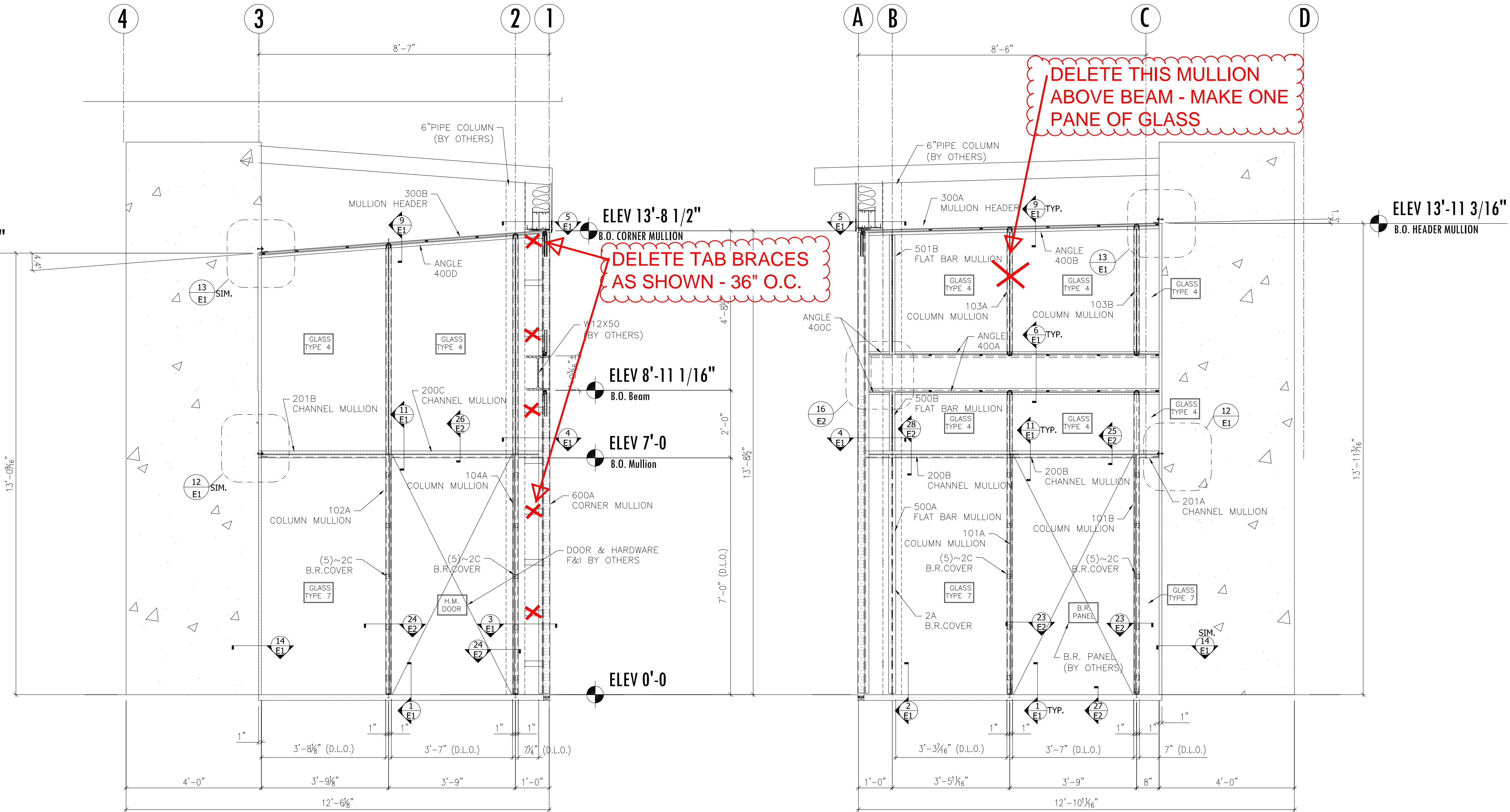
E-MU2

Sheet

1 of 1

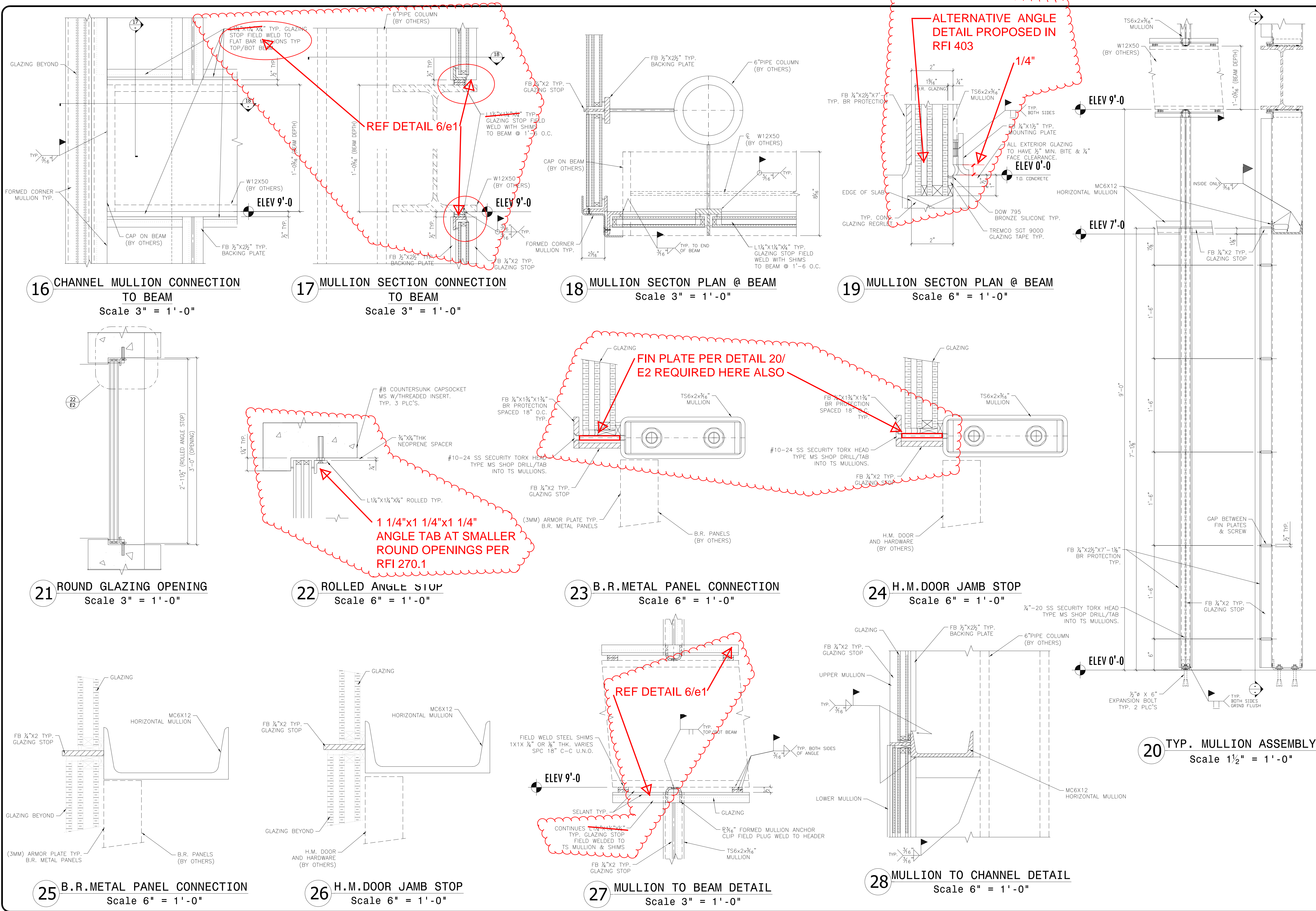
Rev

A

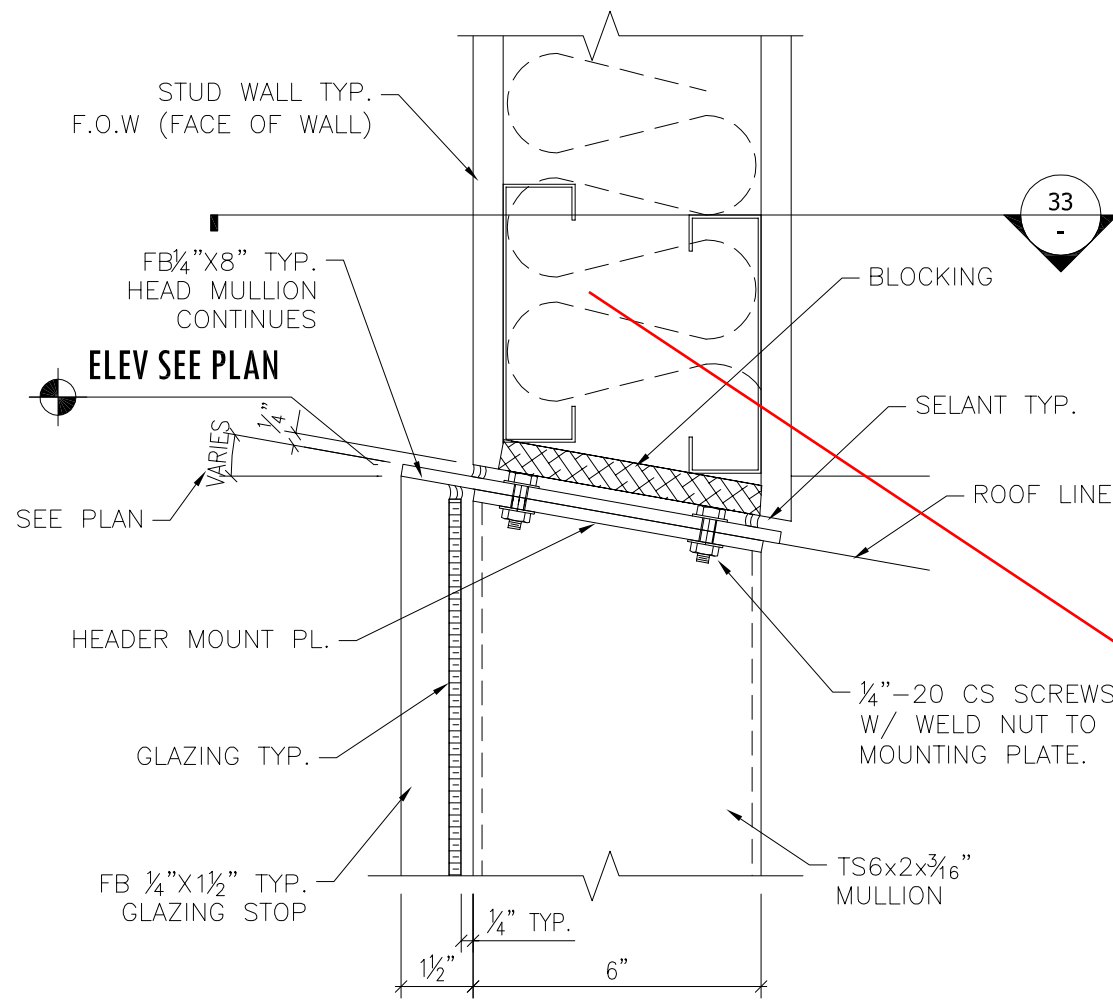


A MOCK-UP ELEVATION
Scale 1/2" = 1'-0"

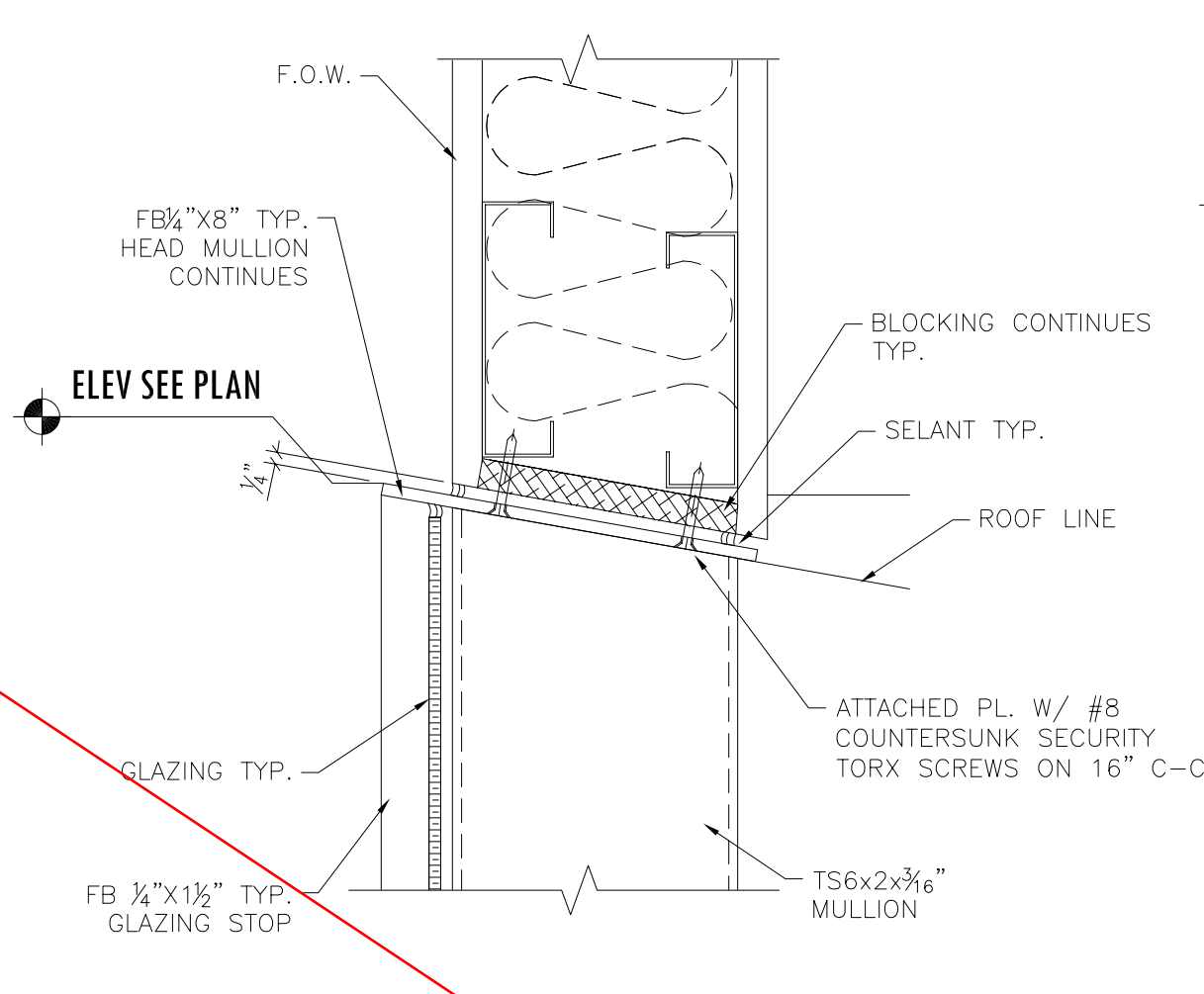
B MOCK-UP ELEVATION
Scale 1/2" = 1'-0"



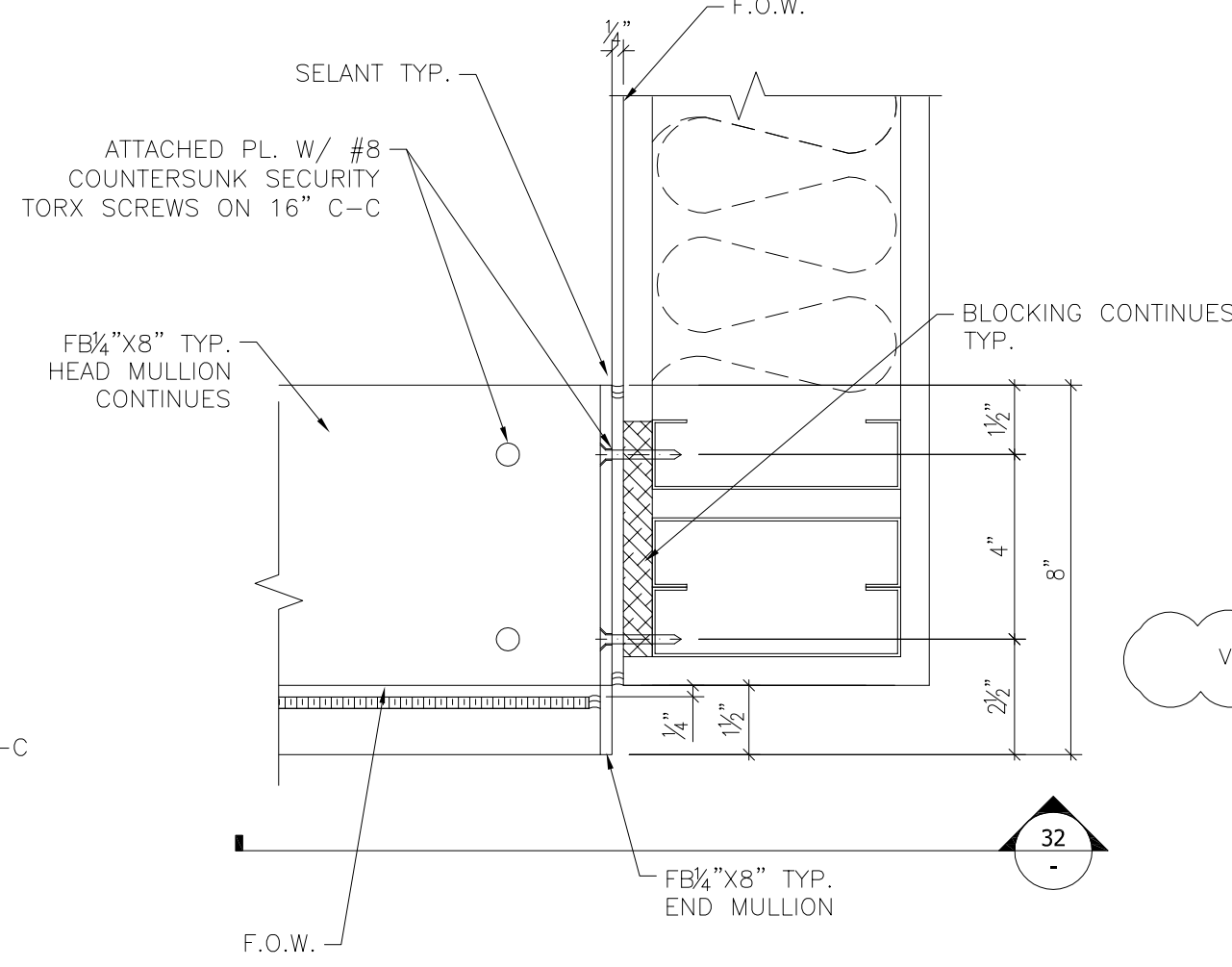
NO.	DATE	FOR APPROVAL	DESCRIPTION
1		SW	
2		DR	
3		NO	
4		NO	
5		NO	
6		NO	
7		NO	
8		NO	
9		NO	
10		NO	
11		NO	
12		NO	
13		NO	
14		NO	
15		NO	
16		NO	
17		NO	
18		NO	
19		NO	
20		NO	
21		NO	
22		NO	
23		NO	
24		NO	
25		NO	
26		NO	
27		NO	
28		NO	



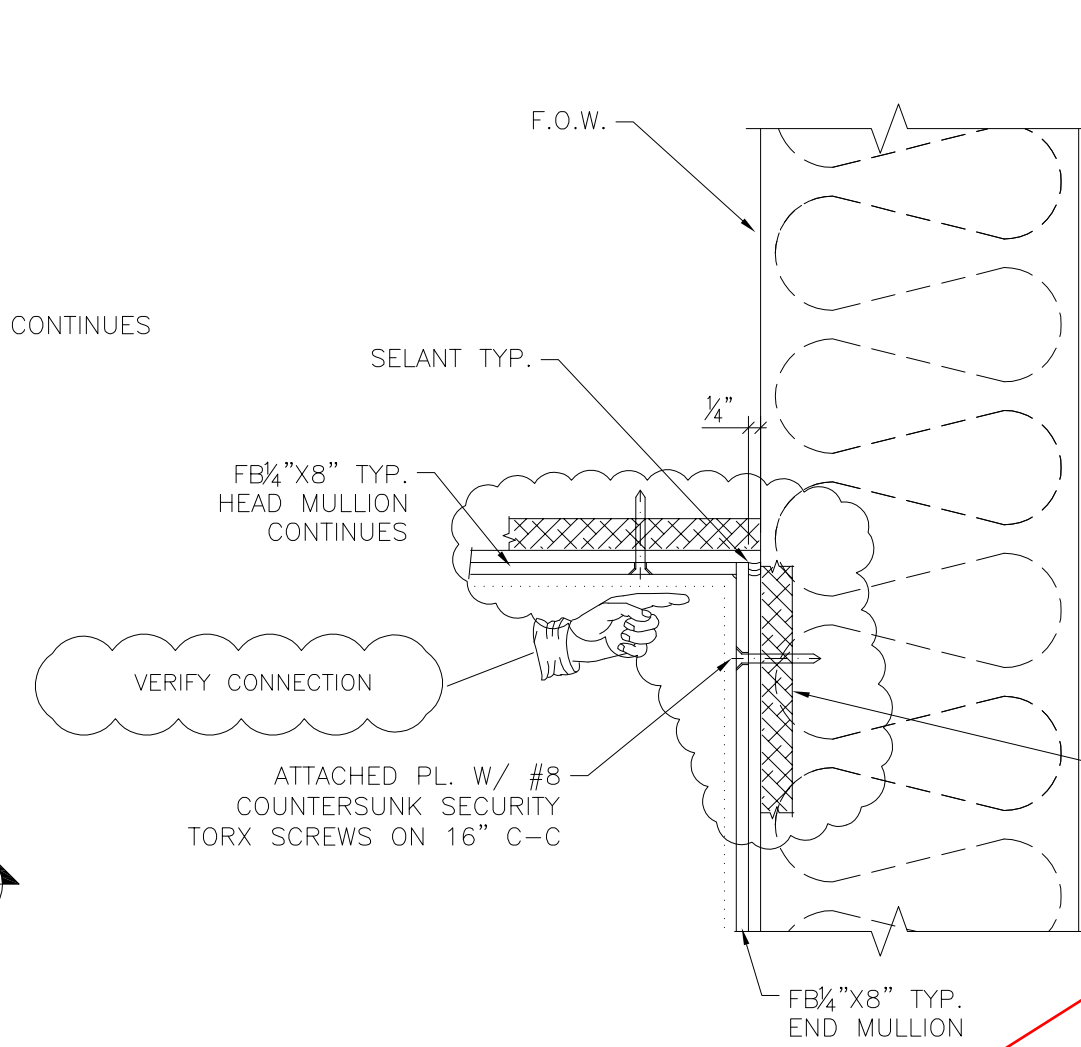
29 HEAD MULLION CONNECTION
Scale 3" = 1'-0"



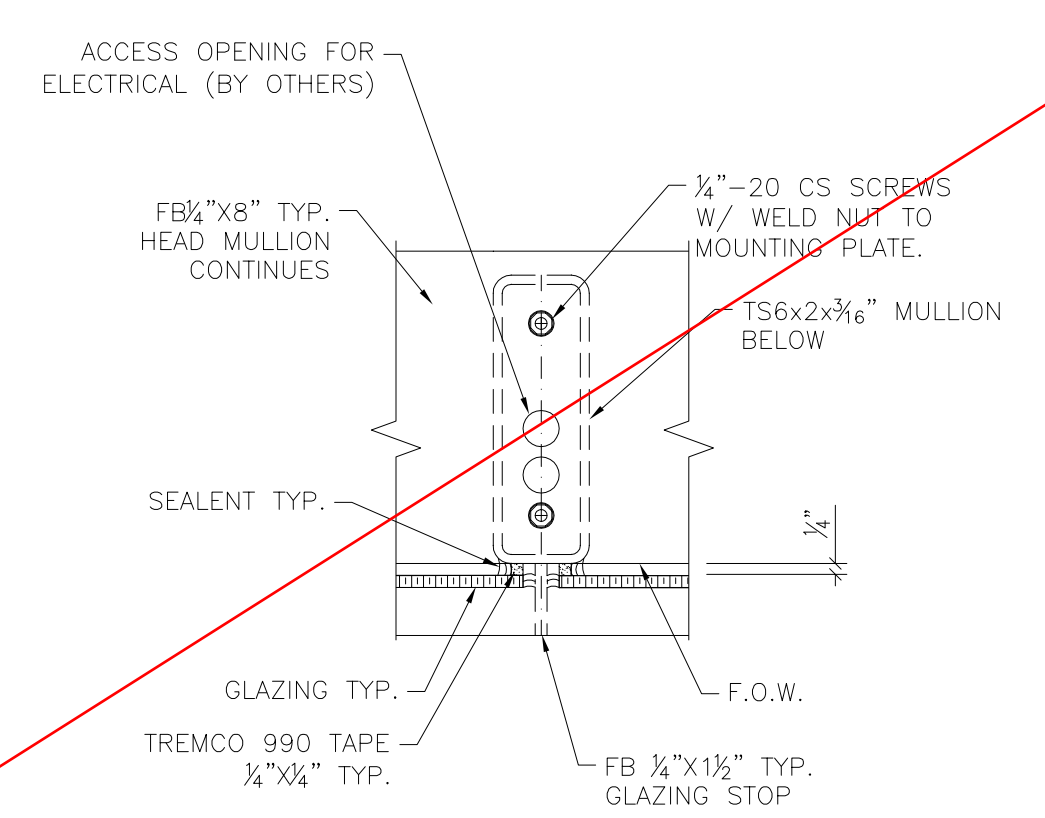
30 HEAD MULLION CONNECTION
Scale 3" = 1'-0"



31 END MULLION CONNECTION
Scale 3" = 1'-0"

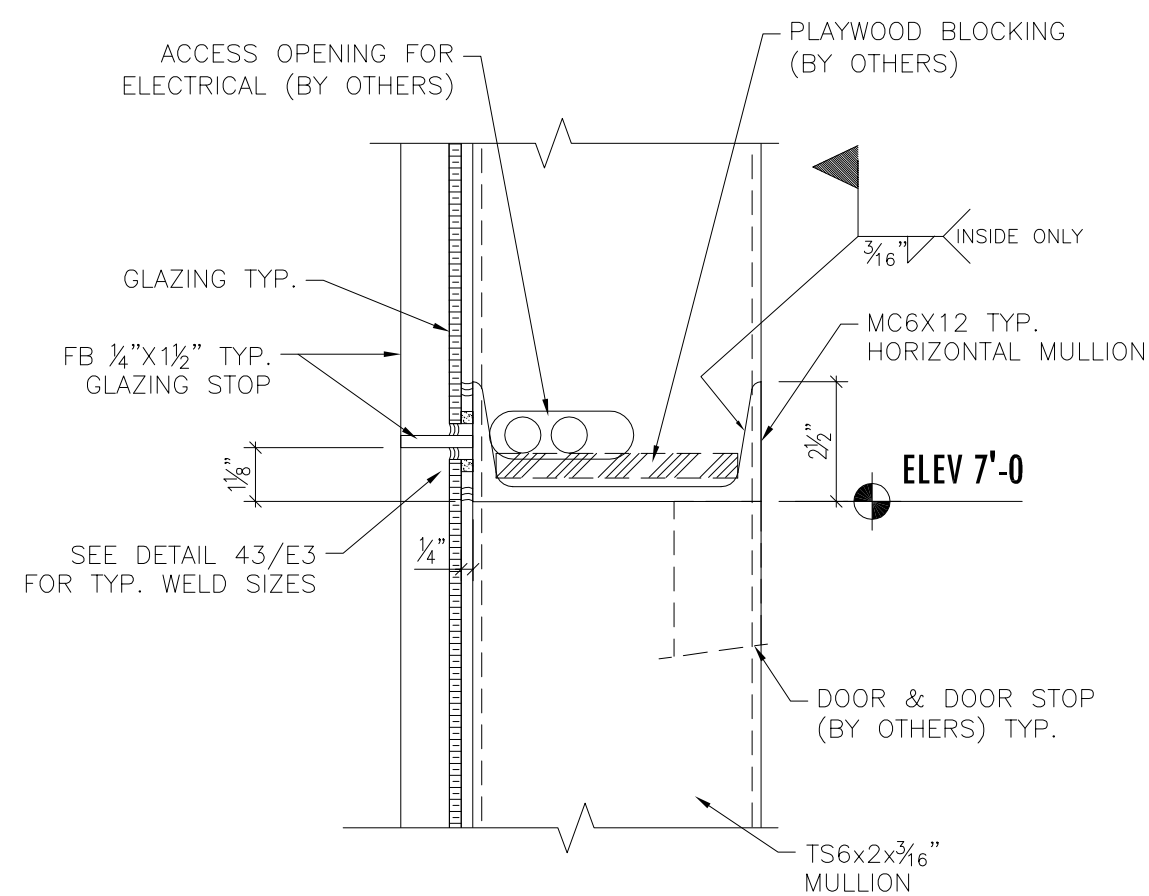


32 END MULLION CONNECTION
Scale 3" = 1'-0"

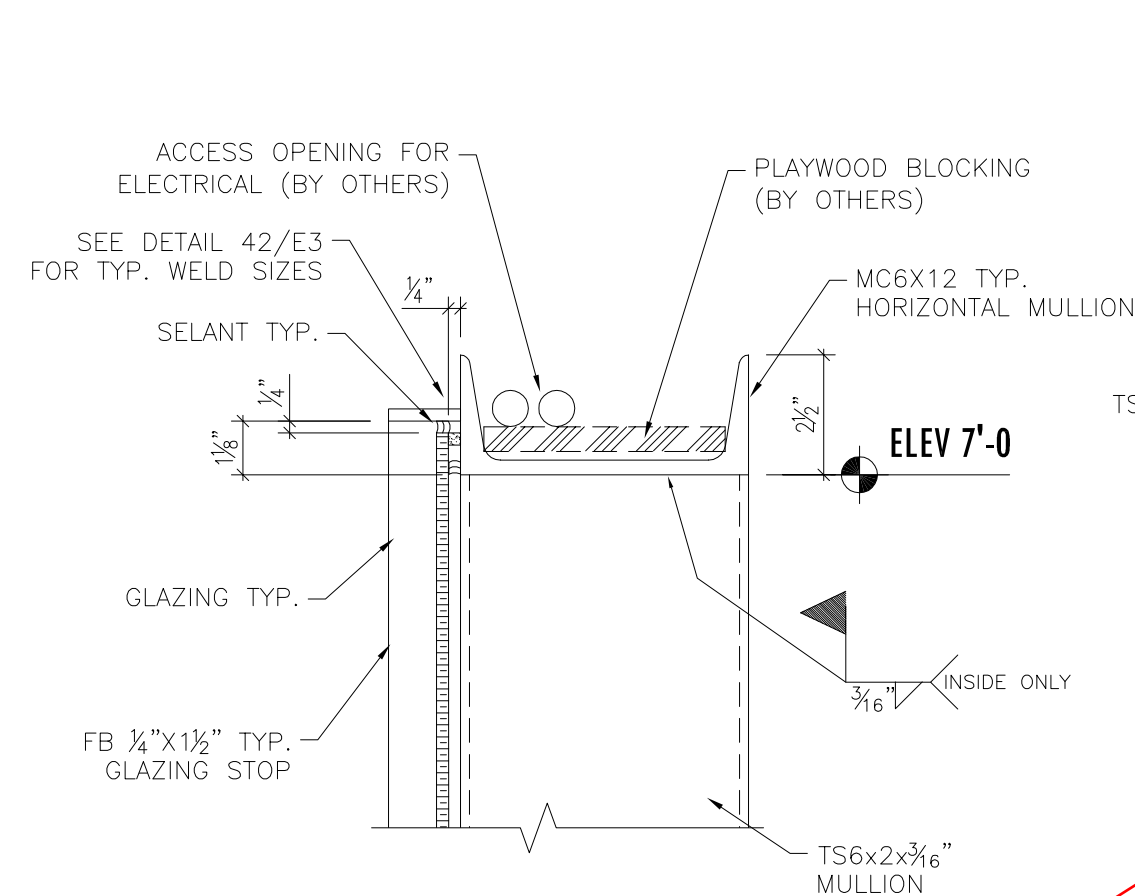


33 HEAD TO COLUMN CONNECTION
Scale 3" = 1'-0"

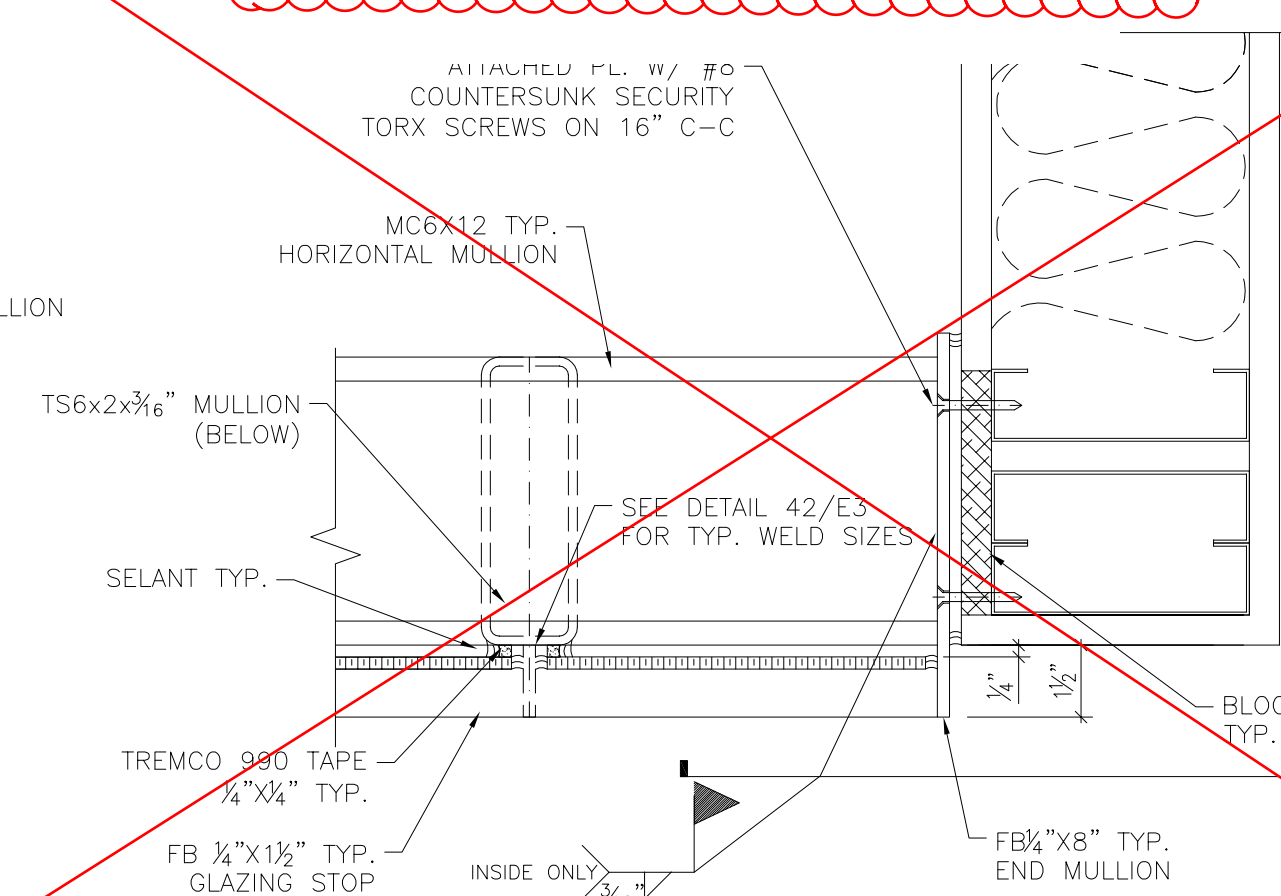
REVIEWED THIS SHEET IN
SEPARATE SUBMITTAL



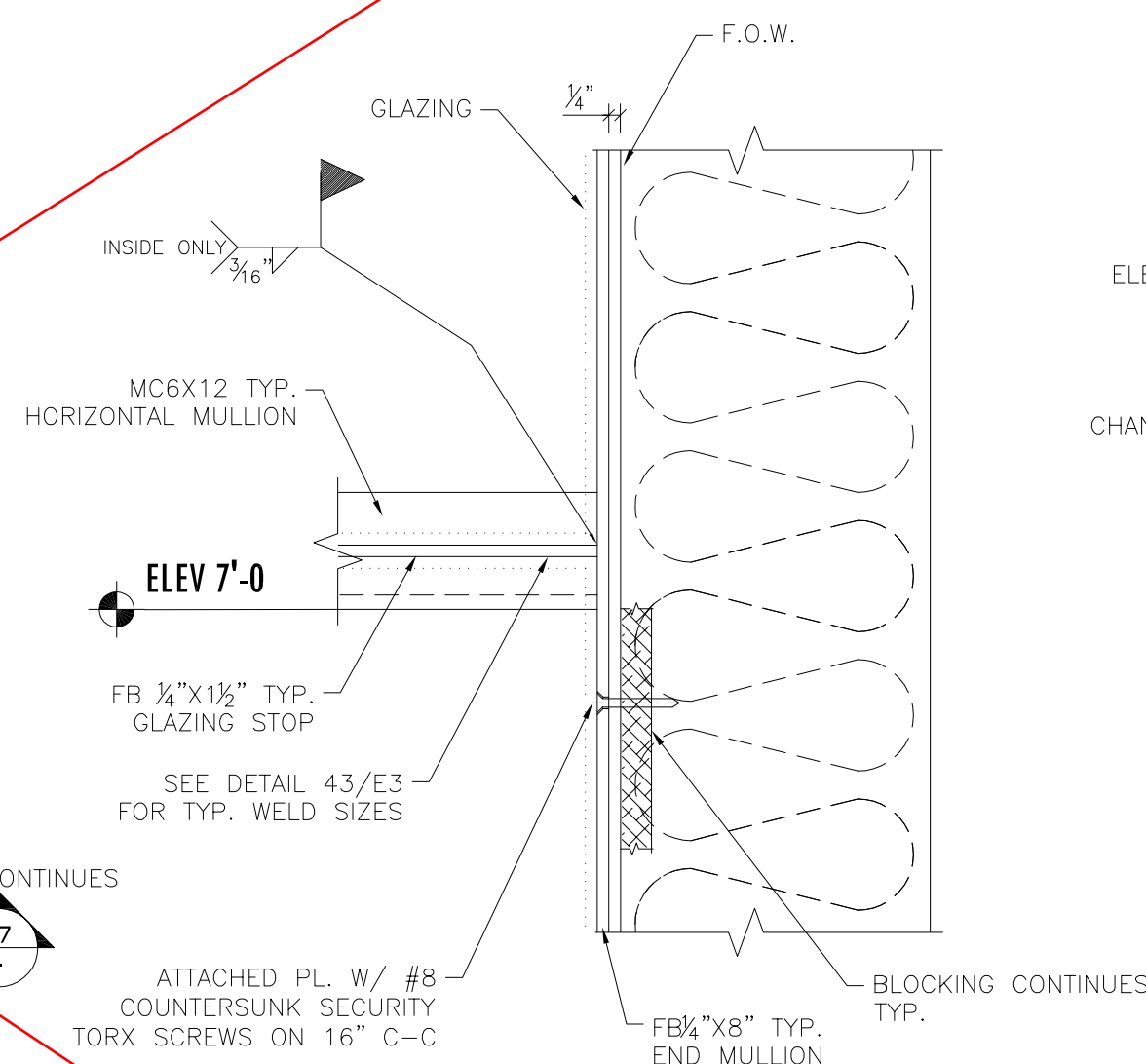
34 MULLION CHANNEL CONNECTION
Scale 3" = 1'-0"



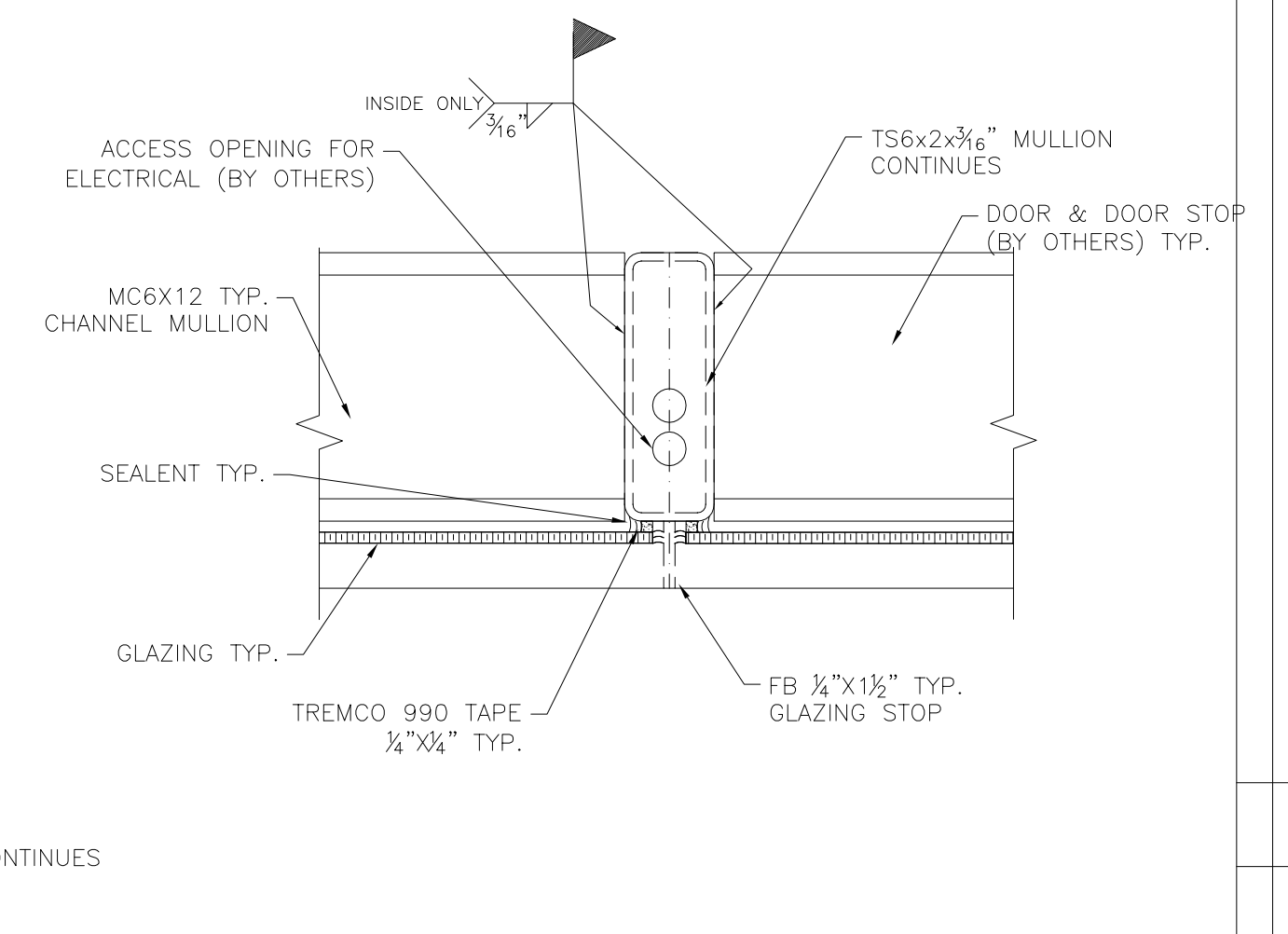
35 MULLION CHANNEL CONNECTION
Scale 3" = 1'-0"



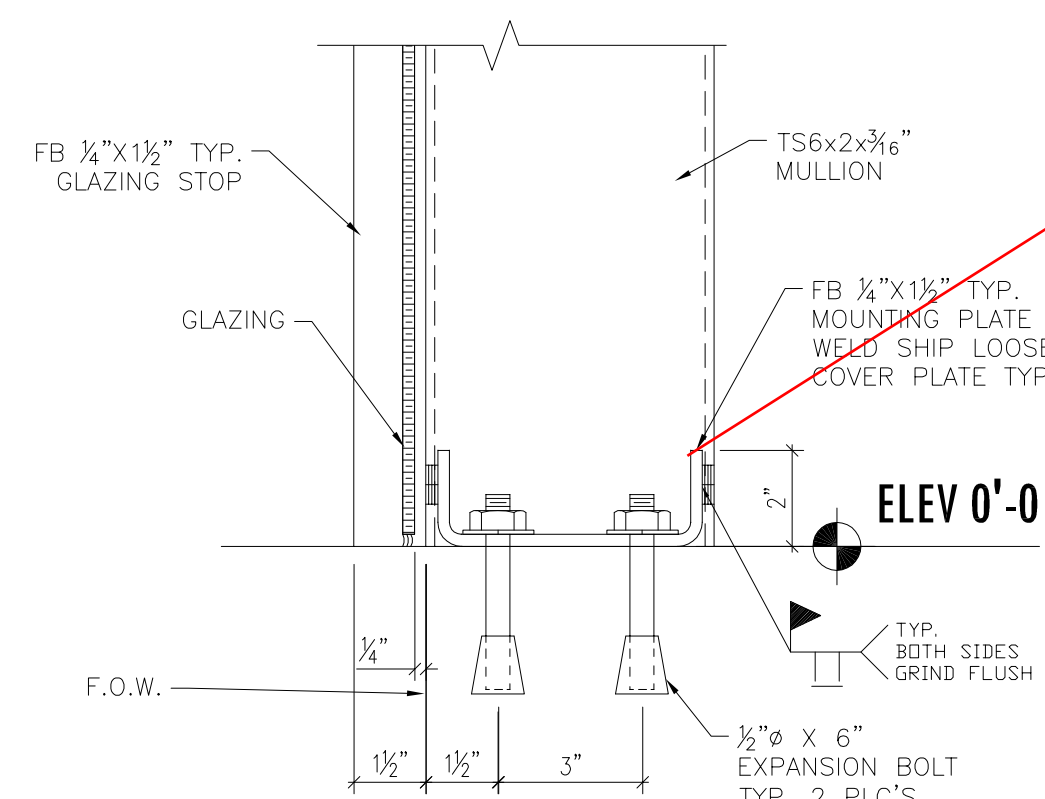
36 MULLION CHANNEL CONNECTION
Scale 3" = 1'-0"



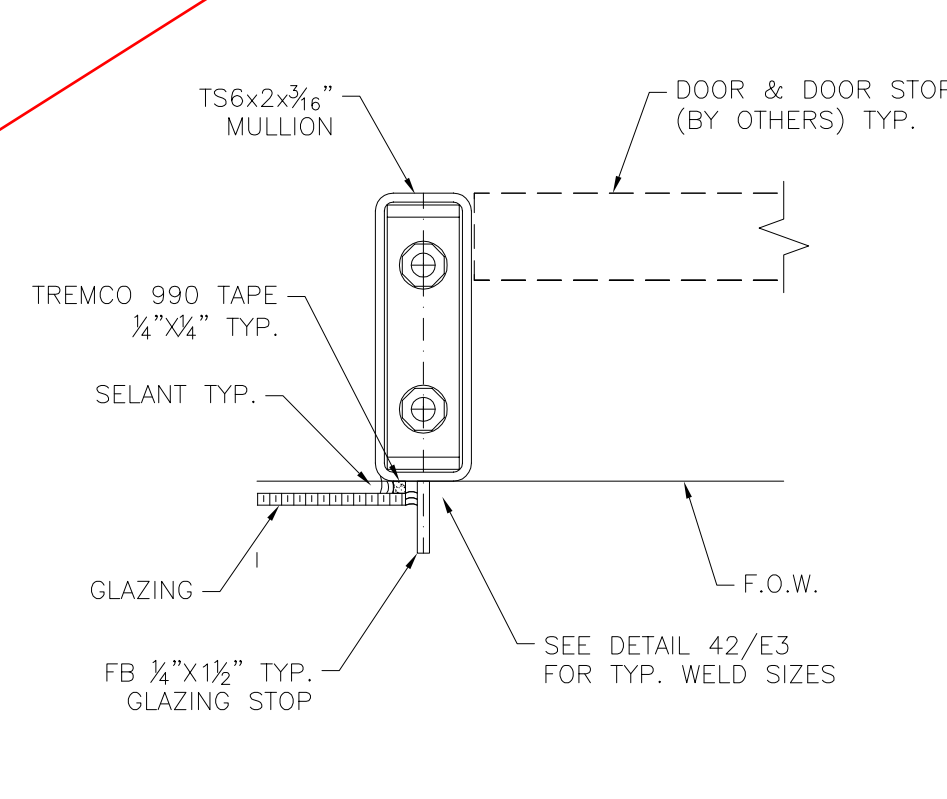
37 MULLION CHANNEL CONNECTION
Scale 3" = 1'-0"



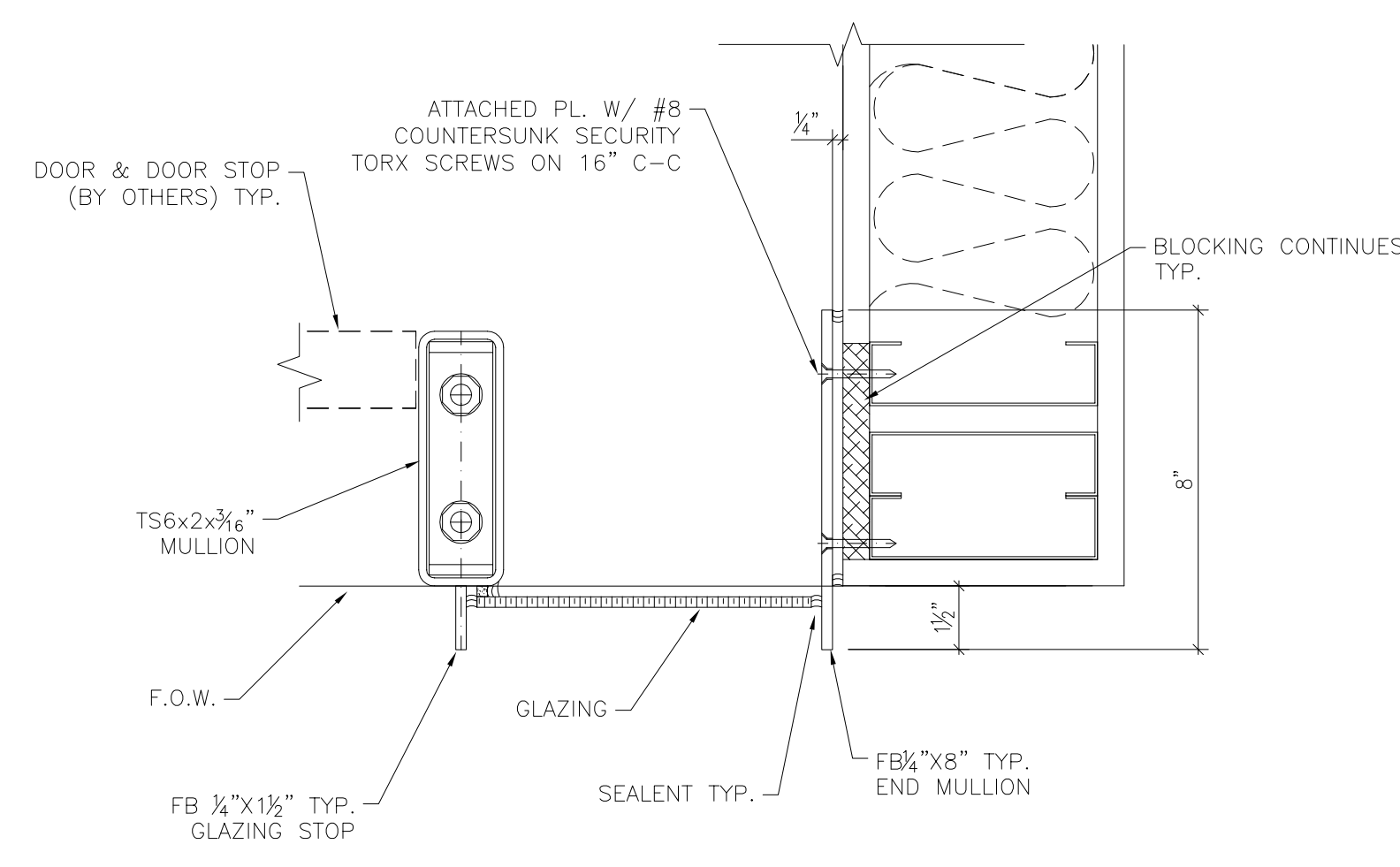
38 CHANNEL TO COLUMN CONNECTION
Scale 3" = 1'-0"



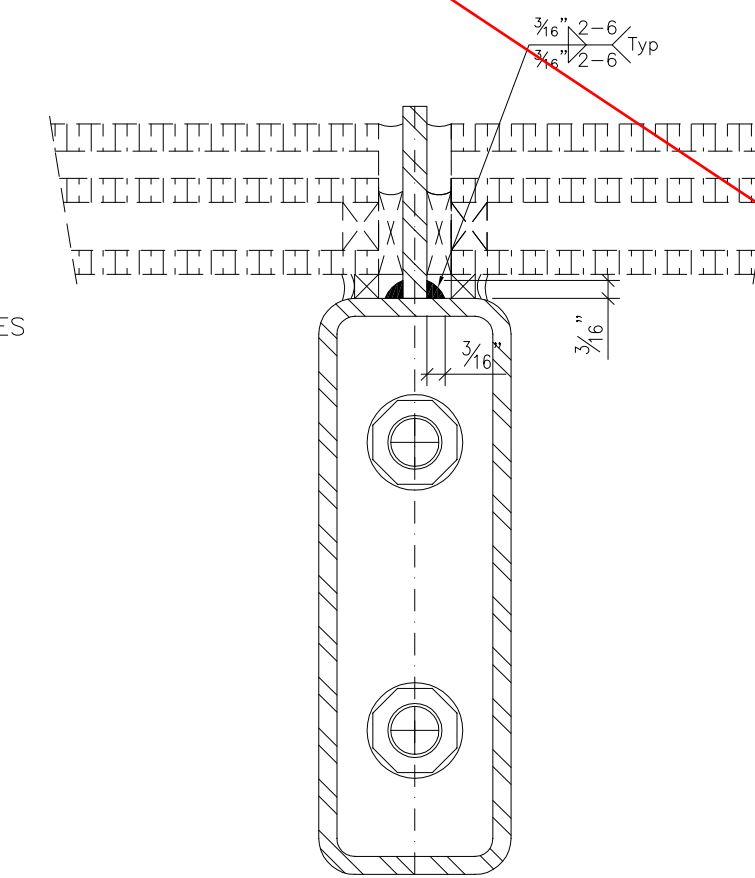
39 COLUMN MULLION ANCHORS
Scale 3" = 1'-0"



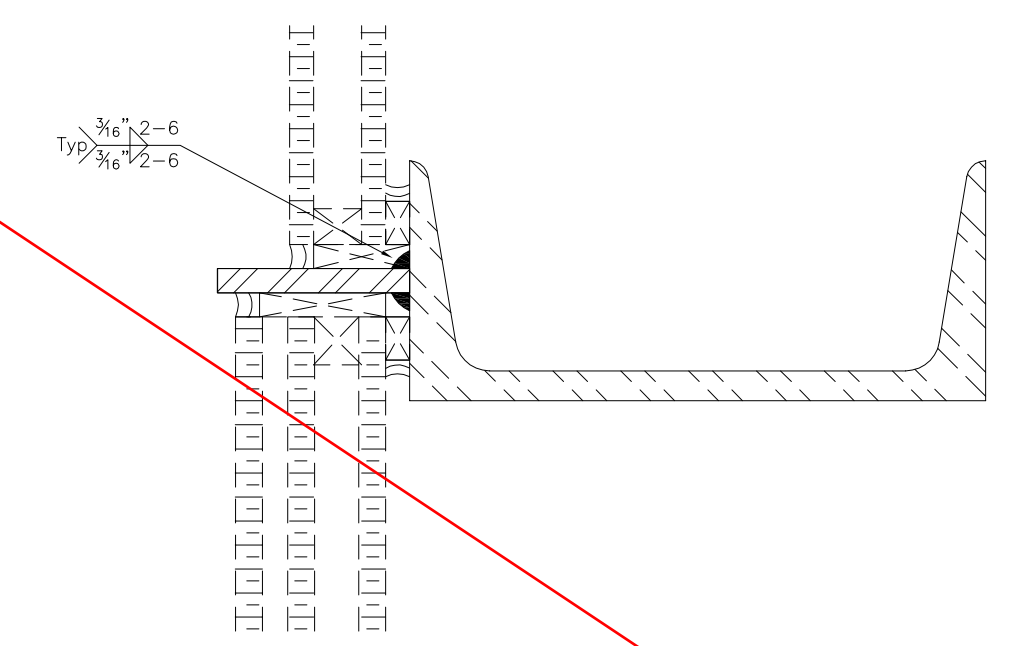
40 MULLION ANCHORS
Scale 3" = 1'-0"



41 MULLION ANCHORS
Scale 3" = 1'-0"



42 TYP. FIN PL WELD DETAIL
Scale 6" = 1'-0"



43 TYP. FIN PL WELD DETAIL
Scale 6" = 1'-0"



15200 294-1125-0111
15200 294-1125-0111
15200 294-1125-0111
15200 294-1125-0111

15200 294-1125-0111

15200 294-1125-0111

15200 294-1125-0111

15200 294-1125-0111

15200 294-1125-0111

15200 294-1125-0111

15200 294-1125-0111

15200 294-1125-0111

15200 294-1125-0111

15200 294-1125-0111

15200 294-1125-0111

15200 294-1125-0111

15200 294-1125-0111

15200 294-1125-0111

15200 294-1125-0111

15200 294-1125-0111

15200 294-1125-0111

15200 294-1125-0111

15200 294-1125-0111

15200 294-1125-0111

15200 294-1125-0111

15200 294-1125-0111

15200 294-1125-0111

15200 294-1125-0111

15200 294-1125-0111

15200 294-1125-0111

15200 294-1125-0111

15200 294-1125-0111

15200 294-1125-0111

15200 294-1125-0111

15200 294-1125-0111

15200 294-1125-0111

15200 294-1125-0111

15200 294-1125-0111

15200 294-1125-0111

15200 294-1125-0111

15200 294-1125-0111

15200 294-1125-0111