

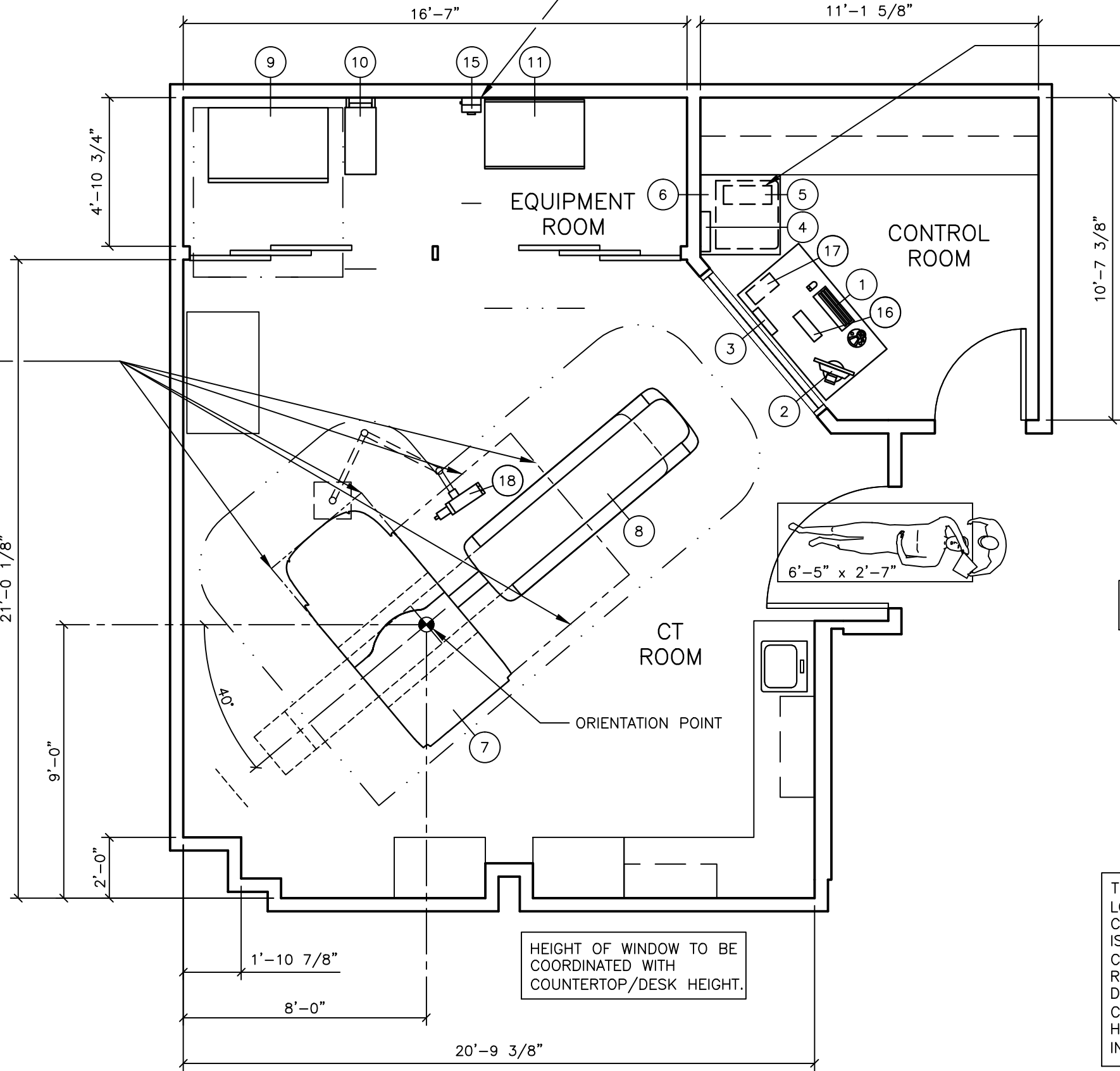
THIS SET OF FINAL DRAWINGS IS REFLECTIVE OF THE LATEST SALES CONFIGURATION. ANY CHANGES TO THIS SALES CONFIGURATION MAY REQUIRE A REVISION TO THIS PROJECT PLAN. IF REQUESTED, SIEMENS WILL PRODUCE A REVISED SET OF FINAL DRAWINGS TO REFLECT THE CHANGES, HOWEVER SIEMENS IS NOT RESPONSIBLE FOR ANY CONSTRUCTION COSTS ASSOCIATED WITH THE CHANGES THAT OCCUR FROM THIS PLAN MODIFICATION.

SURGE SUPPRESSOR TO BE SUPPLIED BY SIEMENS, LOCATED AND INSTALLED BY CUSTOMER/CONTRACTOR. IF IT IS TO BE RELOCATED, IT MUST BE DEINSTALLED, RELOCATED AND REINSTALLED BY THE CUSTOMER/CONTRACTOR, IF NECESSARY. IT MUST BE LOCATED WITHIN 3'-0" OF THE CIRCUIT BREAKER.

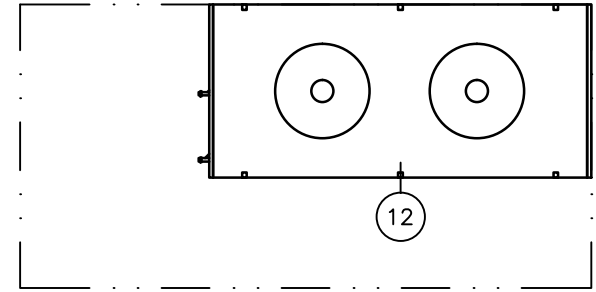
IT IS THE RESPONSIBILITY OF THE CUSTOMER/CONTRACTOR TO PROVIDE A MEANS OF MOUNTING THE PC TOWER(S) OFF FINISHED FLOOR FOR DAMAGE PROTECTION AGAINST TIP-OVER, FLUIDS, IMPACT, ETC. ADDITIONAL MOUNTING IS NOT NECESSARY IF SIEMENS CONTAINER IS UTILIZED.

CONTROL ROOM CASEWORK WILL NEED TO BE REDESIGNED TO ACCOMMODATE QUOTE EQUIPMENT.

NO OBSTRUCTION ZONE - THERE SHOULD BE NO CEILING MOUNTED ITEMS THAT HANG BELOW 8'-0" AFF IN THIS AREA TO ALLOW FOR THE COVER OF THE GANTRY TO OPEN UP.



HEIGHT DIFFERENCE BETWEEN HEAT EXCHANGER AND OUTDOOR UNIT MUST NOT EXCEED ±65"-7".



THE OUTDOOR COOLING UNIT IS SUPPLIED BY SIEMENS, LOCATED AND INSTALLED BY THE CUSTOMER/CONTRACTOR. THE INDOOR HEAT EXCHANGER CABINET IS SUPPLIED BY SIEMENS, INSTALLED BY THE CUSTOMER/CONTRACTOR. IF THE SYSTEM IS TO BE RELOCATED, THE OUTDOOR COOLING UNIT IS TO BE DEINSTALLED, RELOCATED AND REINSTALLED BY THE CUSTOMER/CONTRACTOR, IF NECESSARY. THE INDOOR HEAT EXCHANGER CABINET IS RELOCATED BY SIEMENS, INSTALLED BY THE CUSTOMER/CONTRACTOR.

HEIGHT OF WINDOW TO BE COORDINATED WITH COUNTERTOP/DESK HEIGHT.

## ARCHITECTURAL EQUIPMENT PLAN

SCALE: 1/4" = 1'-0"

### ROOM MEASUREMENTS

ALL ROOM MEASUREMENTS AND ROOM DETAIL SPECIFICATIONS MUST BE VERIFIED ON SITE PRIOR TO BEGINNING ANY CONSTRUCTION WORK.

### ENVIRONMENTAL/POWER AUDIT

AS AN INDICATION OF OUR COMMITMENT TO QUALITY, SIEMENS MAY, AT NO COST TO YOUR FACILITY, CHECK THE OPERATING ENVIRONMENT AFTER SYSTEM TURNOVER TO DETERMINE IF THE REQUIREMENTS FOR TEMPERATURE, HUMIDITY, POWER, AND GROUNDING ARE MET AS PER SIEMENS' PUBLISHED SPECIFICATIONS. SIEMENS WILL GENERATE A WRITTEN REPORT DETAILING THE ENVIRONMENTAL AND ELECTRICAL CONDITION OF THE SITE AFTER TURNOVER AND WILL SHARE THE REPORT WITH YOU. IN THE EVENT WE IDENTIFY ANY ENVIRONMENTAL/POWER DEFICIENCIES AT THE SITE, YOUR FACILITY WILL BE REQUESTED TO CORRECT DEFICIENCIES WITHIN THIRTY (30) DAYS, SHOULD ANY CORRECTIVE ACTIONS BE NECESSARY, AND UPON REQUEST, SIEMENS WILL PROVIDE GUIDANCE IN AN EFFORT TO FACILITATE RESOLUTION. PLEASE BE ADVISED THAT AFTER 30 DAYS NOTICE ANY REPAIR OR MAINTENANCE SERVICES NECESSITATED BY SEVERE DEFICIENCIES WILL FALL OUTSIDE YOUR WARRANTY COVERAGE.

### PLANNING REQUIREMENTS

EMERGENCY POWER OFF (EPO) BUTTONS REQUIRED IN CONTROL AREA, EXAMINATION ROOM AND EQUIPMENT AREA.

DOOR (SAFETY) SWITCH REQUIRED ON ALL DOORS ACCESSING THE EXAMINATION ROOM IN ACCORDANCE WITH LOCAL CODES.

### STATE AGENCY REVIEW

PRIOR TO SIEMENS EQUIPMENT INSTALLATION, APPROVAL OF CONSTRUCTION OR STRUCTURAL MODIFICATIONS UTILIZING X-RAY FOR DIAGNOSTIC OR THERAPEUTIC PURPOSES, MUST BE OBTAINED BY THE CUSTOMER FROM THE APPROPRIATE STATE AGENCY, IF APPLICABLE.

### FINISHED ROOM HEIGHT

FOR CT GANTRY ONLY	MINIMUM 7'-6 9/16"
CAREVISION MONITOR/CEILING MOUNT	MIN. 9'-2 5/8" MAX. 11'-2 5/8"

### NOISE LEVEL

SYSTEM COMPONENT	DECIBEL LEVEL (AT 3'-3" DISTANCE)
GANTRY	<70
PATIENT TABLE	<64
PDC CABINET	≤55
IRS TOWER	≤55
HEAT EXCHANGER - WATER/AIR SPLIT	<60

### CASEWORK & ACCESSORY NOTES

- ALL CASEWORK IS EITHER EXISTING OR IS TO BE DESIGNED, DETAILED, FURNISHED AND INSTALLED BY THE CUSTOMER AND/OR CONTRACTOR. FOLLOW DESIGN RECOMMENDATIONS INCLUDED HEREWITH, AS THEY ARE ESSENTIAL FOR THE SUCCESSFUL INSTALLATION & OPERATION OF THE SIEMENS EQUIPMENT.
- ALL FURNITURE (CHAIRS, ETC.) FOR THE CONTROL ROOM ARE TO BE PROVIDED BY THE CUSTOMER.

### EQUIPMENT LEGEND

NO	DESCRIPTION	SMS SYM	WEIGHT (LBS)	BTU/HR TO AIR	DIMENSIONS (INCHES)			REMARKS
					W	D	H	
1	OPERATING CONSOLE W/KEYBOARD AND CONTROL BOX	⊖	154	---	54 1/4	31 1/2	28-43 1/4	ON CONSOLE/COUNTER
2	19" FLAT SCREEN DUAL CONTROL MONITORS	⊖	40	512	---	---	---	WALL MOUNTED
3	POWER CONNECTION TERMINAL - ICS	⊖	---	---	---	---	---	WALL MOUNTED
4	DVI SPLITTER - ICS	⊖	---	---	15 3/4	3 15/16	11 13/16	MOUNTED ON THE CONSOLE/CONTAINER
5	SYNGO ACQUISITION WORKPLACE	⊖	<55	1,707	7 5/16	19	17	OFF FLOOR/IN CONTAINER
6	CONTAINER FOR ICS/IES	⊖	77	---	31 1/2	31 1/2	29 1/4	HOUSING FOR ICS/IES
7	SOMATOM FORCE GANTRY	⊖	5,842	3,412*	94 1/2	47 1/2	78 3/8	*ADDITIONAL HEAT DISSIPATED TO WATER
8	PATIENT TABLE	⊖	1,102	*	30 7/16	100 3/8	40 3/16	*INCLUDED IN THE GANTRY BTU FIGURE
9	POWER DISTRIBUTION CABINET	⊖	2,425	11,950	47 1/4	29 1/2	75 3/16	UPS LOCATED INSIDE OF PDC
10	IMAGE RECONSTRUCTION SYSTEM	⊖	88	4,780	12 1/4	30 5/16	19 5/8	
11	HEAT EXCHANGER CABINET - WATER/AIR SPLIT	⊖	910	3,412	39 3/8	27 1/4	77	
12	OUTDOOR UNIT - WATER/AIR SPLIT	⊖	397	119,425	95 1/2	43 1/4	40 3/16	
15	EATON SURGE PROTECTIVE DEVICE PANEL	⊖	13.5	---	7 1/2	6 11/16	12	WALL MOUNTED
16	EMPOWER REMOTE CONTROL CONSOLE	⊖	10	---	13	4	11	SEE MFG REQUIREMENTS
17	EMPOWER POWER SUPPLY	⊖	5	---	6	12 1/4	4	SEE MFG REQUIREMENTS
18	EMPOWER CEILING MOUNTED INJECTOR	⊖	75	---	---	---	---	SEE MFG REQUIREMENTS

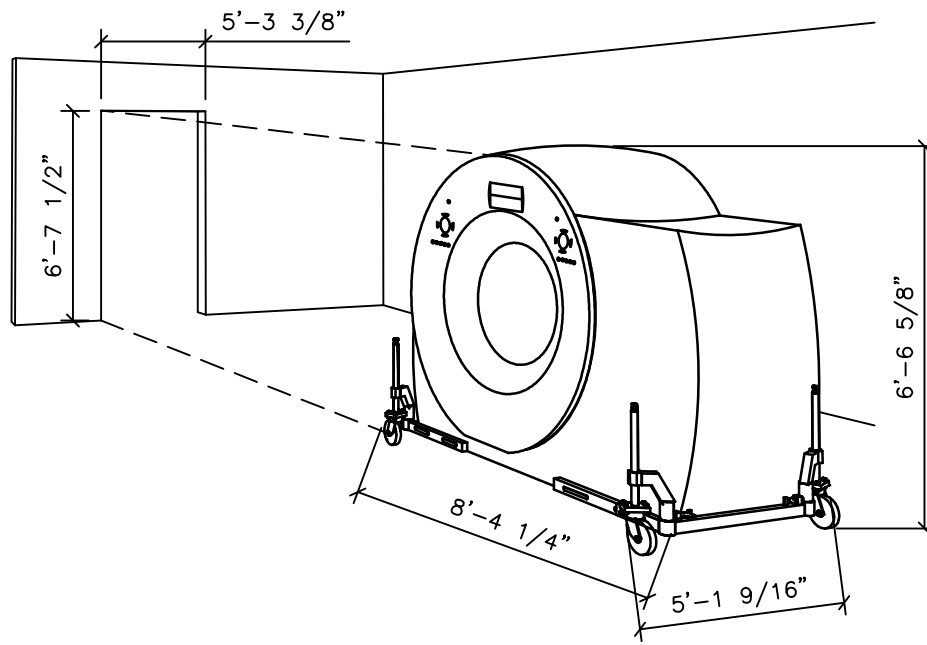
### TRANSPORT AND DELIVERY NOTES

TOTAL GANTRY TRANSPORT WEIGHT: 6,448 LBS.

GANTRY WITHOUT TRANSPORT DEVICE: 5,842 LBS.  
TRANSPORT DEVICE: 606 LBS.

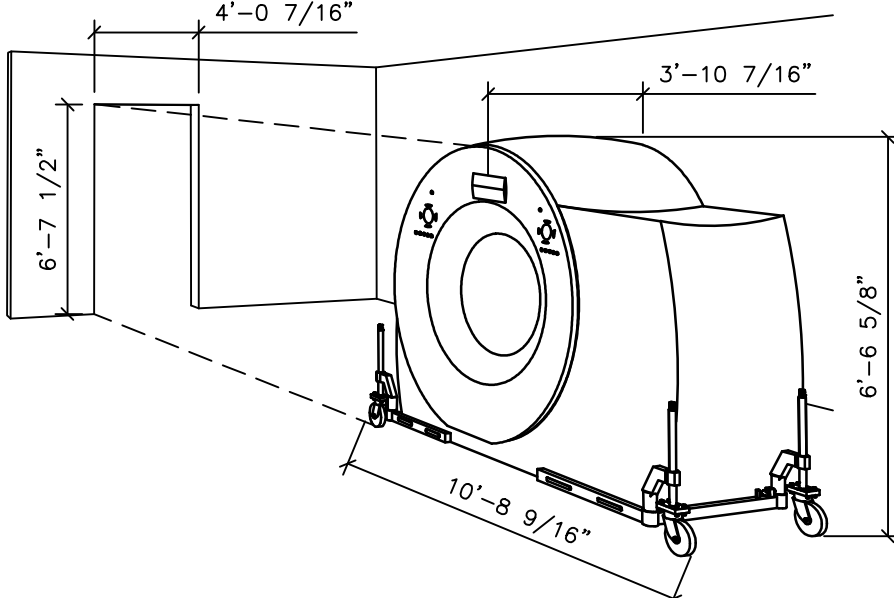
#### NORMAL TRANSPORT REQUIREMENTS:

DURING THE MOVEMENT OF THE GANTRY THROUGH CORRIDORS THE TRANSPORT CASTERS ARE SWIVELED OUT FOR STABILITY AS SHOWN BELOW. THE MAXIMUM WIDTH IS 5'-1 9/16" AND THE MAX. LENGTH IS 8'-4 1/4" WHEN CASTERS ARE SWIVELED OUT.



#### NARROW SPACE TRANSPORT REQUIREMENTS:

WHEN TRANSPORTING THE GANTRY THROUGH A NARROW SPACE OR DOORWAY, THE TRANSPORT CASTERS ARE SWIVELED IN AS SHOWN BELOW. THE MAXIMUM WIDTH IS 3'-10 7/16" AND MAXIMUM LENGTH 10'-8 9/16".



### ARCHITECTURAL NOTES

- ALL PRELIMINARY EQUIPMENT LAYOUTS SUBMITTED BY SIEMENS MEDICAL SOLUTIONS, INC. (SMS HEREFTER) ARE BASED ON THE RECOMMENDED SPACE NECESSARY FOR THE OPERATION AND SERVICEABILITY OF THE EQUIPMENT BEING PROPOSED. SMS WILL NOT SUBMIT AN EQUIPMENT LAYOUT THAT IS NOT IN THE BEST INTEREST OF BOTH THE CUSTOMER AND SMS. ALL EQUIPMENT LAYOUTS ARE BASED EITHER ON AN ACTUAL SITE LOCATION SURVEY OR ARCHITECTURAL DRAWINGS SUPPLIED TO SMS. SMS WILL NOT BE RESPONSIBLE FOR ANY ALTERATIONS THAT ENCRDACH WITHIN DESIGNATED SAFETY AND SERVICE CLEARANCE ZONES AS INDICATED ON DRAWINGS (I.E. PIPE CHASES, VENTILATION DUCTS, CASEWORK, AND SOFFITS, ETC.) MADE BY THE CUSTOMER OR REQUIRED BY A CUSTOMER'S ARCHITECTURAL FIRM ONCE PRELIMINARY DRAWINGS HAVE BEEN SUBMITTED AND APPROVED. DO NOT ALTER ANY SPECIFICATIONS AND/OR DIMENSIONS WITHOUT CONTACTING AND RECEIVING WRITTEN CONFIRMATION FROM SMS PROJECT MANAGER.
- SMS IS NOT AN ARCHITECTURAL OR ENGINEERING FIRM. DRAWINGS SUPPLIED BY SMS ARE NOT CONSTRUCTION DRAWINGS. THEREFORE, THESE DRAWINGS ARE TO BE USED ONLY FOR INFORMATION TO COMPLEMENT ACTUAL CONSTRUCTION DRAWINGS AVAILABLE FROM A CUSTOMER APPOINTED ARCHITECTURAL REPRESENTATIVE OR A CUSTOMER'S ENGINEERING DESIGN GROUP. THE CUSTOMER'S ARCHITECT AND GENERAL CONTRACTOR SHALL BE ULTIMATELY RESPONSIBLE FOR COMPLIANCE WITH ALL APPLICABLE CODES AND PROFESSIONAL DESIGN REQUIREMENTS.
- THE CUSTOMER IS RESPONSIBLE FOR ALL ROOM AND AREA PREPARATION COSTS, PROFESSIONAL FEES, PERMITS, REPORTS, AND INSPECTION FEES.
- EQUIPMENT WARRANTIES, EXPRESSED OR IMPLIED ON THE PART OF SMS SHALL BE CONTINGENT UPON STRICT COMPLIANCE WITH THE ARCHITECTURAL, STRUCTURAL, ELECTRICAL, MECHANICAL AND RECOMMENDATIONS AND REQUIREMENTS CONTAINED IN THESE DRAWINGS, UNLESS SPECIFIED OTHERWISE.
- ALL DIMENSIONS SHOWN ARE TAKEN FROM FINISHED SURFACES UNLESS SPECIFIED OTHERWISE.
- THIS DRAWING DOES NOT PROVIDE RADIATION SHIELDING REQUIREMENTS FOR X-RAY AND ASSOCIATED EQUIPMENT. THE CUSTOMER IS RESPONSIBLE FOR CONSULTING WITH A REGISTERED RADIATION PHYSICIST. ACTUAL PROTECTION REQUIREMENTS SHALL BE SPECIFIED BY A REGISTERED RADIATION PHYSICIST AT CUSTOMER'S ENGAGEMENT AND EXPENSE. RESPONSIBILITY FOR ALL INFORMATION AS TO THE ROOM LOCATION, USE, AND NUMBER OF ANTICIPATED EXAMINATIONS TO BE PERFORMED PER TIME PERIOD SHALL BE PROVIDED TO THE PHYSICIST BY THE CUSTOMER. THE CUSTOMER SHALL FURTHER TAKE ALL RESPONSIBILITY IN THE COMMUNICATION AND COORDINATION OF ACTIVITIES OF THE RADIATION PHYSICIST AND THE ARCHITECTURAL REPRESENTATIVE.
- SMS SHALL BE RESPONSIBLE FOR SMS EQUIPMENT INSTALLATION AND CALIBRATION, CONNECTION AND INSTALLATION OF SMS PROVIDED CABLES, AND CONNECTION OF CONTRACTOR PROVIDED WIRES TO SMS EQUIPMENT. IN THE EVENT THAT SPECIFIC TRADE RULES OR LICENSE REQUIREMENTS PROHIBIT THIS, THE CUSTOMER SHALL INITIATE THE SERVICES OF APPROVED OTHER CONTRACTORS AND PAY FOR SELECTED, APPROVED PARTIES TO PERFORM THIS WORK WITH JOB SUPERVISION TO BE PROVIDED BY SMS. CALIBRATION WHEN ACCOMPLISHED OUTSIDE OF NORMAL INSTALLATION SEQUENCES DUE TO CONTRACTOR OR TRADE RULE ACTIONS OR REQUIREMENTS SHALL BE SUPPORTED BY, CHARGED TO, AND ACCEPTED BY THE CUSTOMER AS AN ADDITIONAL INSTALLATION EXPENSE.
- THE CUSTOMER SHALL VERIFY WITH SMS PROJECT MANAGER FINAL INSTALLATION DRAWINGS THE LOCATIONS AND TRAVEL OF ALL ANCILLARY EQUIPMENT TO BE CEILING OR WALL MOUNTED (I.E. O.R. LIGHTS, MEDICAL GAS COLUMNS, PHYSIOLOGICAL MONITORING INJECTORS, CRT PLATFORMS, SPRINKLER HEADS, SMOKE DETECTORS, ELECTRICAL OUTLETS, HVAC GRILLES, SPEAKERS, AND GENERAL ROOM LIGHTING, ETC.).
- THE GENERAL CONTRACTOR/CUSTOMER SHALL BE RESPONSIBLE FOR ALL FINAL PAINT, TOUCH-UP AND ANY COSMETIC OR TRIM WORK WHICH NEEDS TO BE OR IS REQUIRED TO BE COMPLETED AFTER THE INSTALLATION OF THE SMS EQUIPMENT AND ANY ASSOCIATED SUPPORT APPARATUS.

### SITE READINESS GUIDELINES

- THE FOLLOWING GENERAL CONDITIONS ARE NECESSARY TO HAVE THE STATUS OF "READY SITE":
- PROPER POWER AVAILABLE AT SIEMENS EQUIPMENT POWER CABINET LOCATION AND ALL POWER OUTLETS FUNCTIONING.
  - AIR CONDITIONING/HUMIDIFICATION SYSTEMS COMPLETE, TESTED, AND FUNCTIONING PROPERLY ACCORDING TO SIEMENS SPECIFICATIONS.
  - PROPER LIGHTING INSTALLED AND FUNCTIONING.
  - PLUMBING COMPLETE EXCEPT FOR ANY FINAL CONNECTIONS TO SIEMENS EQUIPMENT.
  - ALL CABLE TRAYS/DUCTS/CONDUITS CORRECTLY SIZED, LOCATED, AND INSTALLED ACCORDING TO THE SIEMENS DRAWINGS.
  - ALL REINFORCEMENT PLATES/UNISTRUT INSTALLED AS REQUIRED.
  - ROOM FOR EQUIPMENT INSTALLATION AND IMMEDIATE VICINITY IS DUST-FREE AND IS TO REMAIN SO FOR THE DURATION OF THE INSTALLATION.
  - A SECURE AREA (APPROXIMATELY 10' x 10') IS AVAILABLE AT EQUIPMENT DELIVERY FOR PARTS AND INSTALLATION TOOLS.
  - CUSTOMER SUPPLIED CAMERAS AND PROCESSORS INSTALLED.
  - CUSTOMER APPROVAL FOR SIEMENS REMOTE SERVICES (SRS) CONNECTION, AND CUSTOMER'S I.T. CONTACT INFORMATION AND IP ADDRESSES ESTABLISHED.
  - WALLS TO BE PRIMED AND PAINTED, FLOORS TO BE TILED EXCEPT IN AREAS OF THE EQUIPMENT BASE PLATES.
- IF THESE CONDITIONS ARE NOT MET, THE SIEMENS PROJECT MANAGER AND THE DESIGNATED SIEMENS INSTALLATION SUPERVISOR SHALL RESCHEDULE THE INSTALLATION START DATE. NOTE: ADDITIONAL COST MAY BE INCURRED BY THE CUSTOMER/CONTRACTOR AND DELIVERY DATES MAY NEED TO BE RESCHEDULED, WHEN THE SIEMENS SITE READINESS GUIDELINES ARE NOT MET.

### RESOURCE LIST (SMS USE ONLY)

DESIGNATION	PG NUMBER	DATE
SOMATOM FORCE	C2-058.891.01.04.02	10.14
COMMON CT	CT00-000.891.04.03.02	10.13
COMMON OPTIONS CT	CT00-000.891.03.24.02	06.14

FORCE  
REV 2

**SIEMENS**  
**HEALTH CARE**

300 PASTEUR DR., STANFORD, CA 94305  
CT ROOM - SOMATOM FORCE

PROJECT #:

**1502692**

SHEET 1 OF 9  
DRAWN BY: J. DRAMS

DATE: 12/28/15

SHEET:  
**A-101**

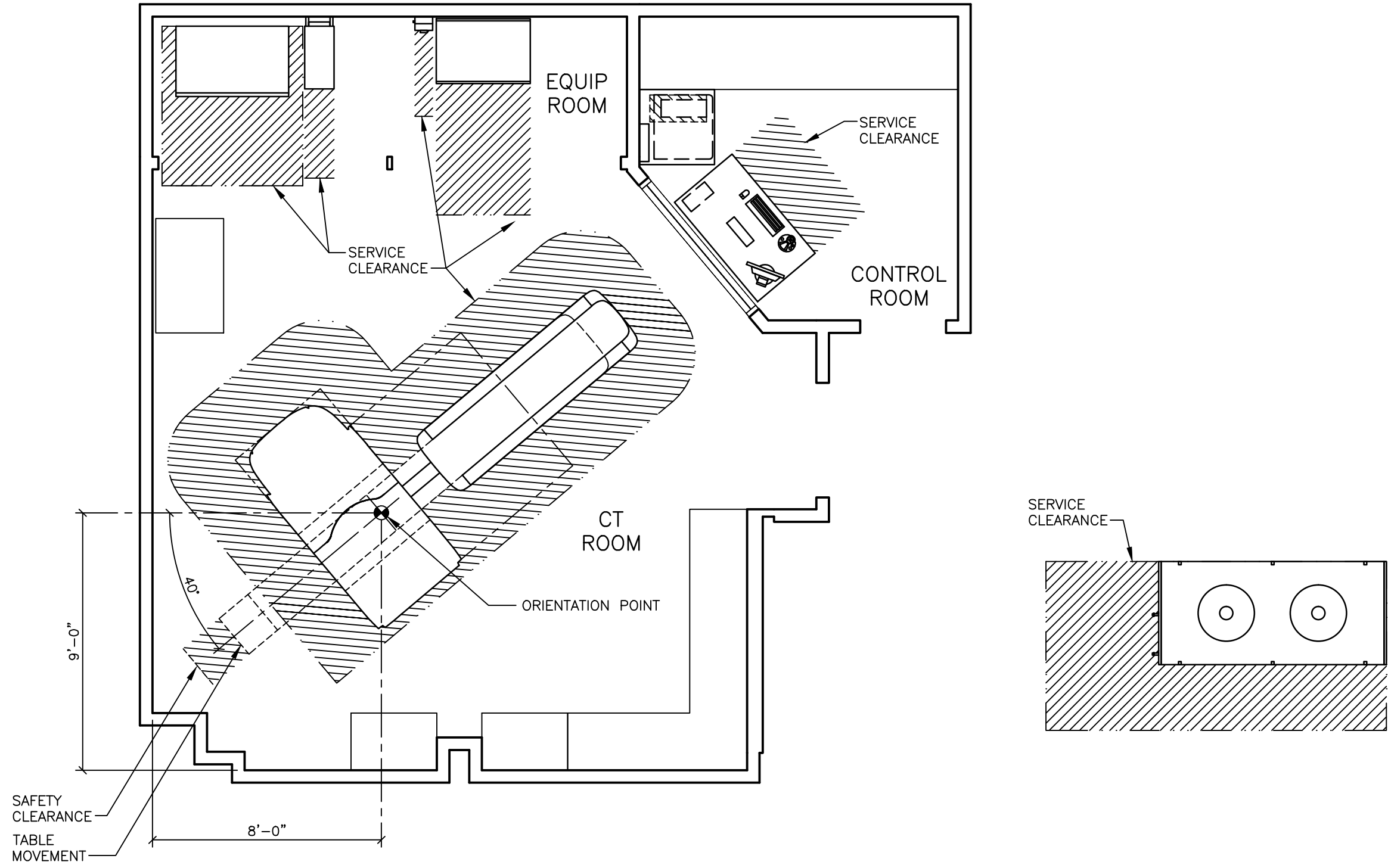
**ATTENTION:**

- THIS DRAWING IS DESIGNED TO CONFORM TO FEATURES AND EQUIPMENT REQUIREMENTS PRESENTED AT THE TIME OF THEIR PREPARATION.  
- THIS DRAWING DOES NOT PROVIDE RADIATION SHIELDING REQUIREMENTS FOR X-RAY AND ASSOCIATED EQUIPMENT. THE CUSTOMER IS RESPONSIBLE FOR CONSULTING WITH A REGISTERED RADIATION PHYSICIST TO SPECIFY RADIATION PROTECTION.  
- THIS SET OF PLANS REPRESENTS A COMPLETE SET OF DETAILS AND SHOULD NOT BE SEPARATED.

- IT IS RECOMMENDED THAT THE SIEMENS DRAWINGS BE INCORPORATED WITH THE CONSTRUCTION DOCUMENTS FOR REFERENCE.

- ALL DIMENSIONS SHOWN ON THIS DRAWING ARE FROM FINISHED SURFACES.  
- THIS DRAWING DOES NOT PROVIDE RADIATION SHIELDING REQUIREMENTS FOR X-RAY AND ASSOCIATED EQUIPMENT. THE CUSTOMER IS RESPONSIBLE FOR CONSULTING WITH A REGISTERED RADIATION PHYSICIST TO SPECIFY RADIATION PROTECTION.

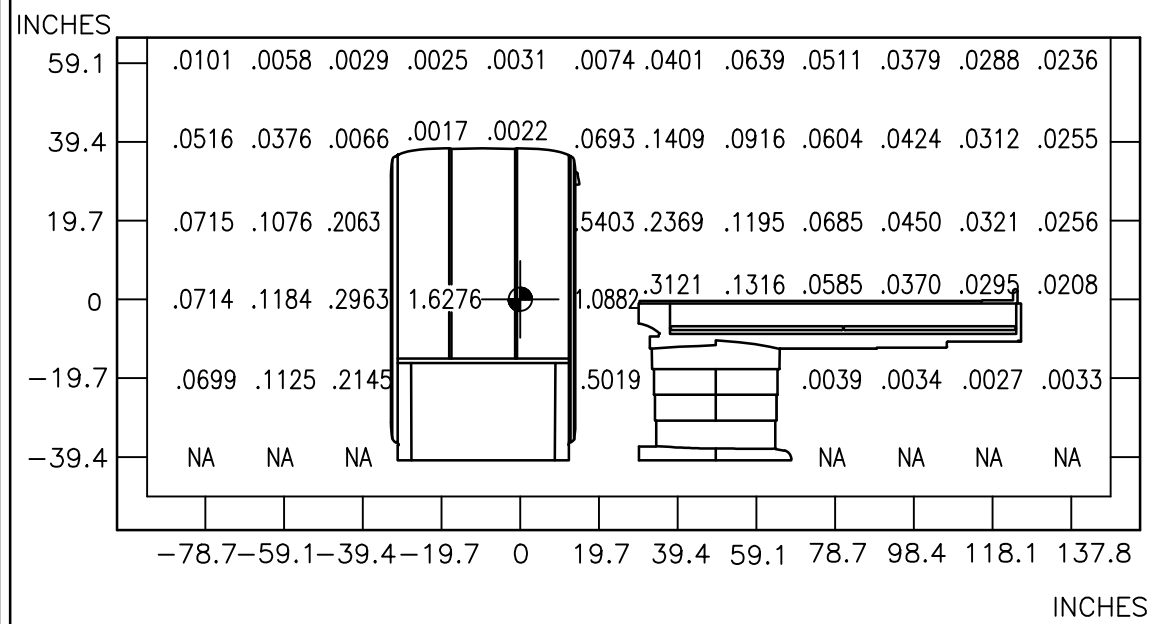
PROJECT MANAGER: JIM STANCIL TEL: (415) 278-1915 FAX: EXT: EMAIL: JIM.STANCIL@SIEMENS.COM	
THE USE OR REPRODUCTION OF THIS TITLE BLOCK WITHOUT SIEMENS' AUTHORIZATION WILL CONSTITUTE VIOLATION UNDER FEDERAL AND STATE LAWS.	
ALL RIGHTS ARE RESERVED.	
SCALE: AS NOTED	REF. # 30187558
-ISSUE BLOCK-	



SAFETY/SERVICE CLEARANCE PLAN

SCALE: 1/4" = 1'-0"

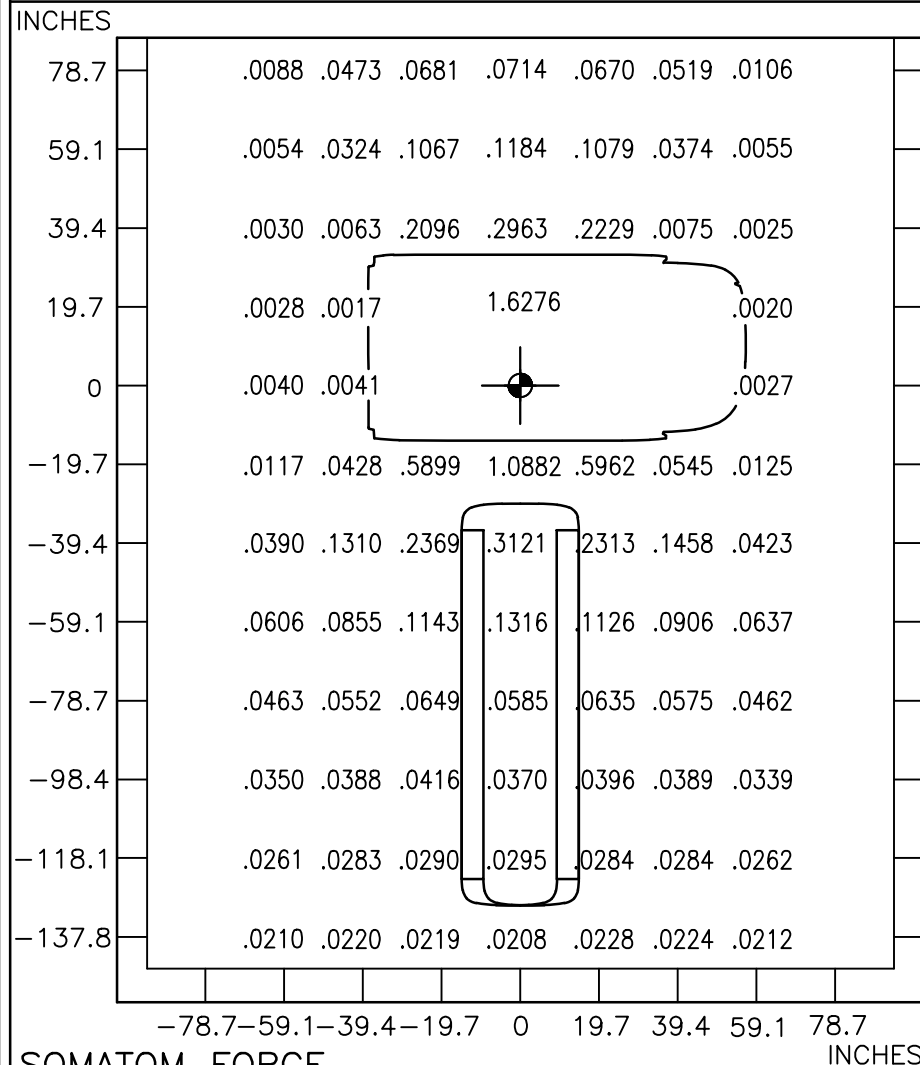
RADIATION SCATTER



**SOMATOM FORCE**  
VERTICAL LOCAL DOSE DISTRIBUTION  
MEASUREMENT IN uGy/mAs  
SCALE 1/4"=1'-0"

SCANNING WAS PERFORMED USING A MAXIMUM SLICE THICKNESS OF 96 x 0.6 mm (57.6 mm) AT 150 kV THROUGH THE SYSTEM AXIS IN THE VERTICAL PLANE. PHANTOM USED: CYLINDRICAL PMMA PHANTOM, 32 CM IN DIAMETER, 15 CM LONG. THE PHANTOM WAS CENTERED IN THE TOMOGRAPHIC PLANE.

RADIATION SCATTER



**SOMATOM FORCE**  
HORIZONTAL LOCAL DOSE DISTRIBUTION  
MEASUREMENT IN uGy/mAs  
SCALE 1/4"=1'-0"

SCANNING WAS PERFORMED USING A MAXIMUM SLICE THICKNESS OF 96 x 0.6 mm (57.6 mm) AT 150 kV THROUGH THE SYSTEM AXIS IN THE HORIZONTAL PLANE. PHANTOM USED: CYLINDRICAL PMMA PHANTOM, 32 CM IN DIAMETER, 15 CM LONG. THE PHANTOM WAS CENTERED IN THE TOMOGRAPHIC PLANE.

SIEMENS REMOTE SERVICES (SRS)

TO ENSURE THE UPTIME OF YOUR SYSTEM DURING THE WARRANTY PERIOD (AND BEYOND WITH A SERVICE AGREEMENT), SIEMENS REMOTE SERVICES (SRS) REQUIRES REMOTE LOCAL AREA NETWORK ACCESS TO SIEMENS SYSTEMS.

SRS REQUIRES ONE OF THE FOLLOWING CONNECTION METHODS:

(PREFERRED) VPN CONNECTION

THE PREFERRED CONNECTION METHOD IS (VPN) VIRTUAL PRIVATE NETWORK (WHERE THE CUSTOMER HAS AVAILABLE A VPN CAPABLE FIREWALL OR OTHER VPN APPLIANCE). THIS METHOD PROVIDES THE POSSIBILITY FOR REMOTE SYSTEM DIAGNOSTICS WITHOUT ADDITIONAL HARDWARE. PLEASE CONTACT SIEMENS REMOTE SERVICES (800-888-SIEM) TO DETERMINE IF THIS METHOD IS SUITABLE FOR YOUR SITE.

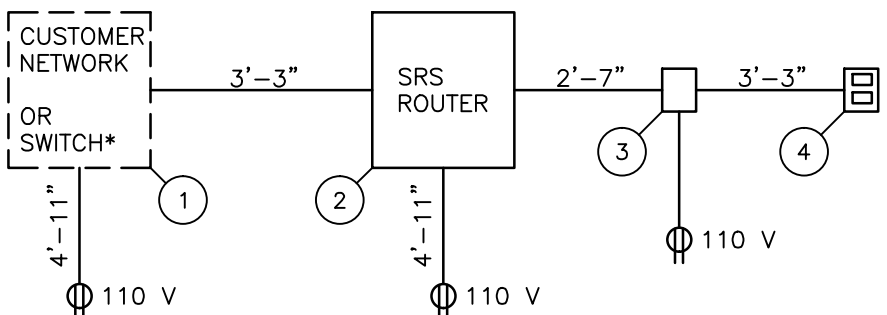
(OPTIONAL) SRS ROUTER CONNECTION

— THE SRS ROUTER IS SUPPLIED BY SIEMENS AND INSTALLED AT THE CUSTOMER'S SITE, WHILE STILL REMAINING THE PROPERTY OF SIEMENS. THE CUSTOMER'S NETWORK ADMINISTRATOR AND SIEMENS REMOTE SERVICES SHALL DETERMINE THE TYPE AND LOCATION OF THE SRS ROUTER REQUIRED.

— THE SRS ROUTER IS CONNECTED TO AN ANALOG MODEM THAT IS SUPPLIED BY SIEMENS, WHICH THEN IN TURN IS CONNECTED TO AN ANALOG PHONE LINE THAT IS SUPPLIED BY THE CUSTOMER. ONE SRS ROUTER ALLOWS REMOTE DIAGNOSTICS TO MULTIPLE MEDICAL SYSTEMS.

— THE SRS ROUTER SHOULD BE INSTALLED IN A SECURE LOCATION (CUSTOMER'S NETWORK COMPUTER ROOM) THAT HAS LIMITED ACCESS. IT CAN BE LOCATED ON A SHELF, TABLE, OR IN A CABINET. THE CONNECTION CABLES (WITH INDICATED LENGTHS BELOW) ARE INCLUDED WITH DELIVERY.

SRS ROUTER CONNECTION DIAGRAM



NOTE: ALL POWER OUTLETS ARE SUPPLIED/INSTALLED BY CUSTOMER.

- ① ETHERNET SWITCH OR HUB, SUPPLIED BY CUSTOMER
- ② SRS ROUTER, SUPPLIED BY SIEMENS (SIZE: 11.2"W X 8.7"D X 5.5"H, WEIGHT: 2 LBS.)
- ③ ANALOG MODEM, SUPPLIED BY SIEMENS
- ④ ANALOG PHONE LINE, SUPPLIED BY CUSTOMER

\* OPTIONAL SWITCH AND CABLES ARE NOT INCLUDED, BUT CAN BE ORDERED FROM SIEMENS.

SIEMENS REMOTE SERVICE

SCALE: NONE

SAFETY CLEARANCE NOTE

IF THE SAFETY DISTANCES ARE NOT OBSERVED, SAFETY MEASURES IN ACCORDANCE WITH LOCAL CODES SHOULD BE UTILIZED (FOR EXAMPLE BARRIERS, WARNING SIGNS, AND SAFETY MATS).

FINISHED ROOM HEIGHT

FOR CT GANTRY ONLY	MINIMUM 7'-6 9/16"
CAREVISION MONITOR/CEILING MOUNT	MIN. 9'-2 5/8" MAX. 11'-2 5/8"

PROJECT MANAGER: JIM STANCIL  
TELL (415) 278-1915 EXT:  
VMAIL: EXT:  
FAX:  
EMAIL: JIM.STANCIL@SIEMENS.COM

**SIEMENS**  
**HEALTH CARE**

300 PASTEUR DR., STANFORD, CA 94305  
CT ROOM — SOMATOM FORCE

PROJECT #:

**1502692**

SHEET 2 OF 9  
DRAWN BY: J. DRAMS

DATE: 12/28/15

SHEET:

**A-102**

ATTENTION:

— THIS DRAWING IS DESIGNED TO CONFORM TO FEATURES AND EQUIPMENT REQUIREMENTS PRESENTED AT THE TIME OF THEIR PREPARATION.  
MODIFICATION, THEY ARE NOT TO BE USED FOR CONSTRUCTION PURPOSES.  
— THIS SET OF PLANS REPRESENTS A COMPLETE SET OF DETAILS AND SHOULD NOT BE SEPARATED.

— IT IS RECOMMENDED THAT THE SIEMENS DRAWINGS BE INCORPORATED WITH THE CONSTRUCTION DOCUMENTS FOR REFERENCE.

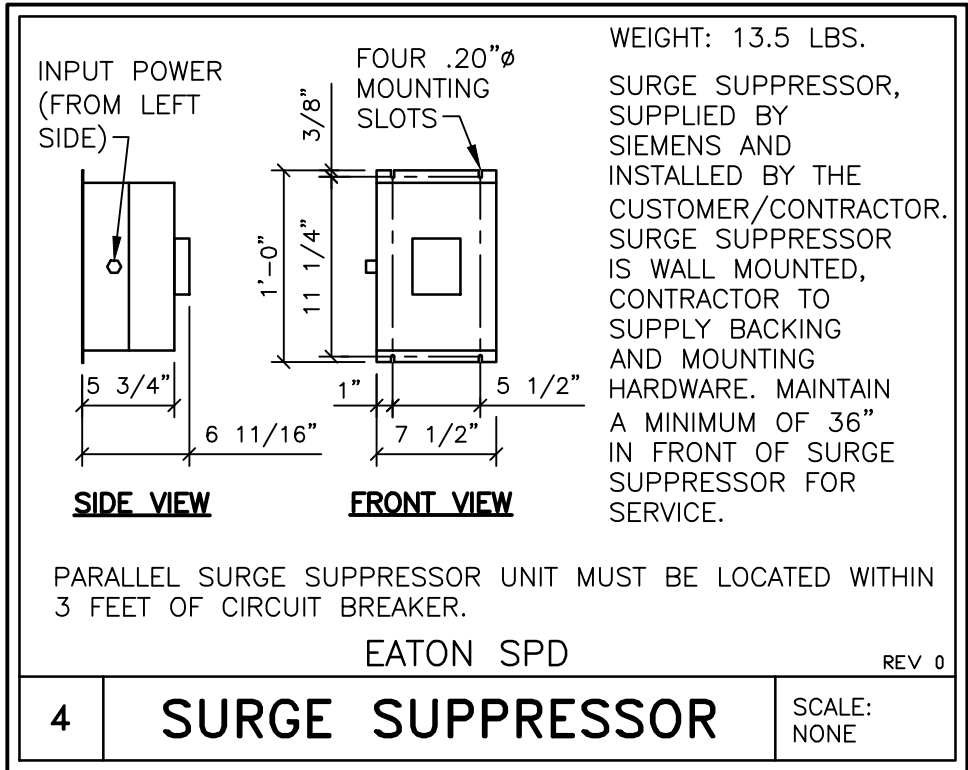
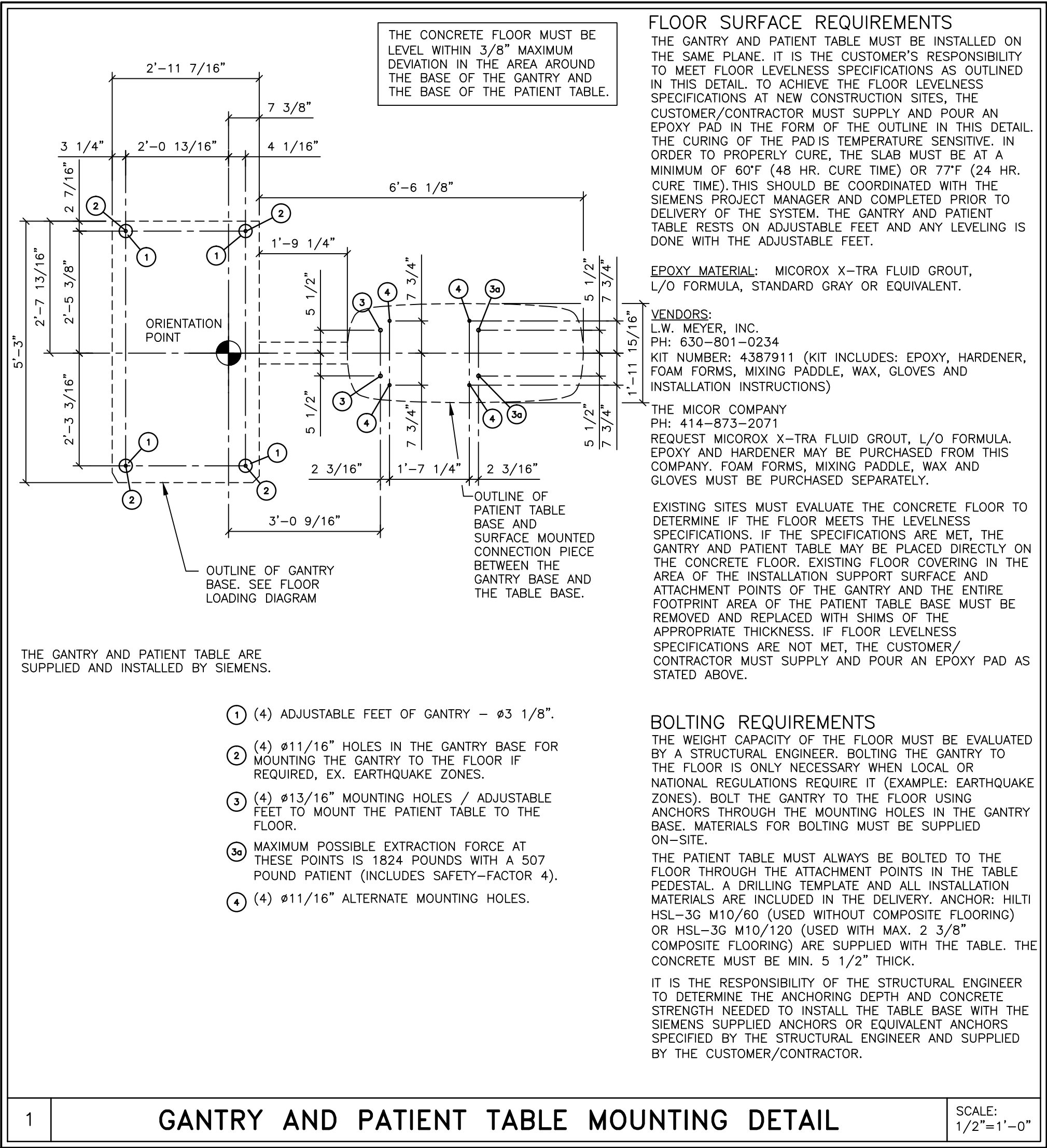
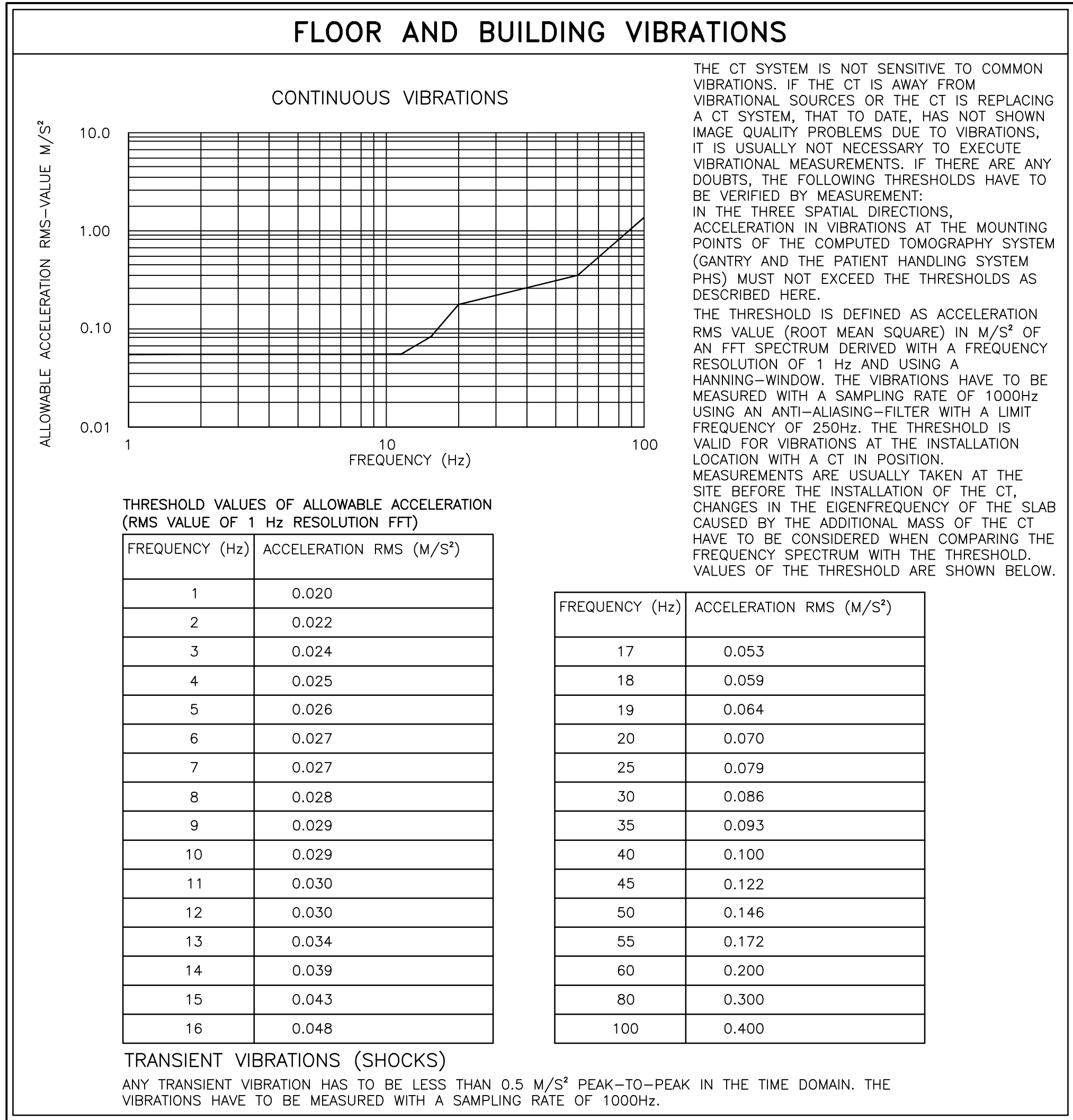
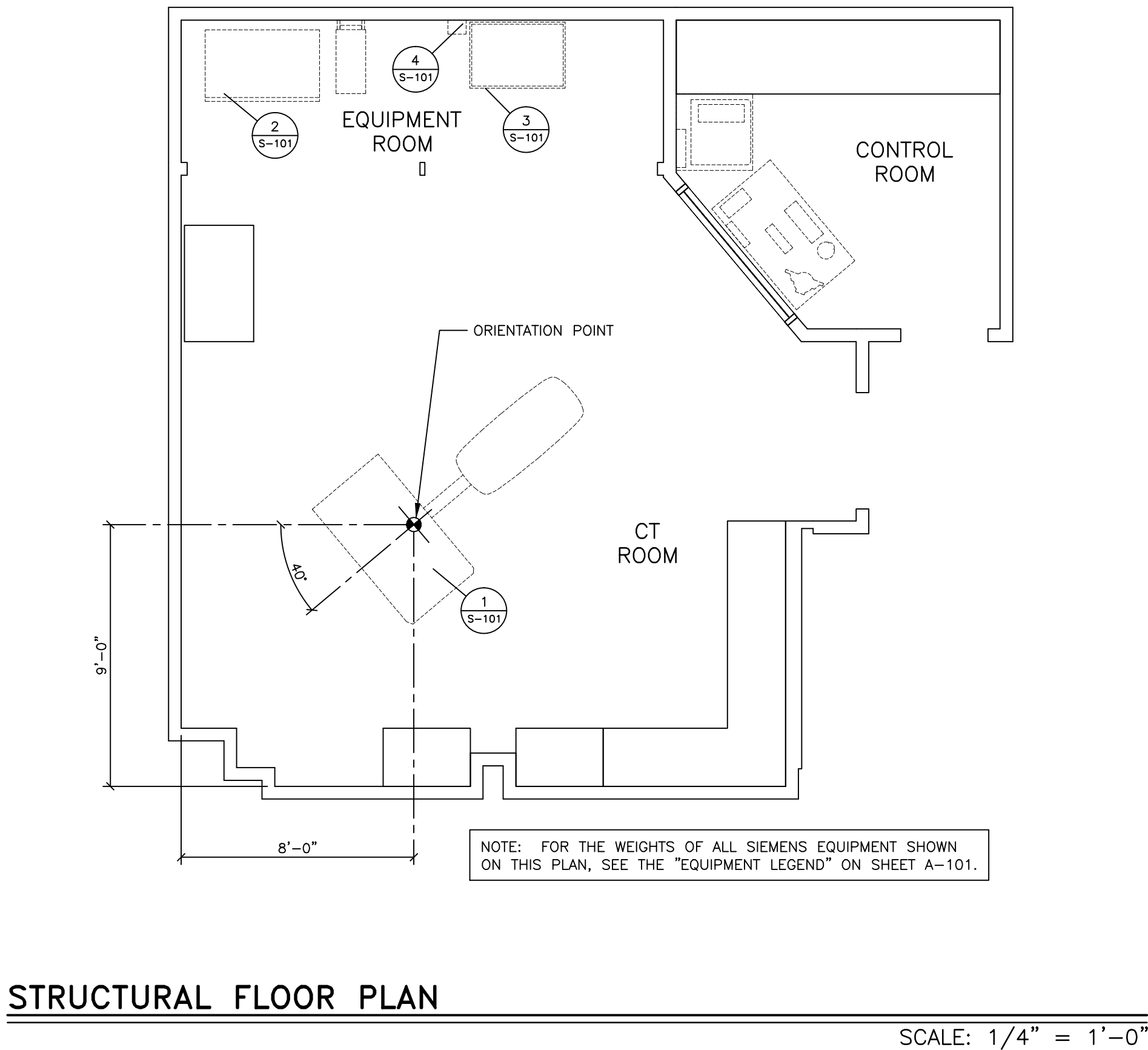
— ALL DIMENSIONS SHOWN ON THIS DRAWING ARE FROM FINISHED SURFACES.  
— THIS DRAWING DOES NOT PROVIDE RADIATION SHIELDING REQUIREMENTS FOR X-RAY AND ASSOCIATED EQUIPMENT. THE CUSTOMER IS RESPONSIBLE FOR CONSULTING WITH A REGISTERED RADIATION PHYSICIST TO SPECIFY RADIATION PROTECTION.

		</

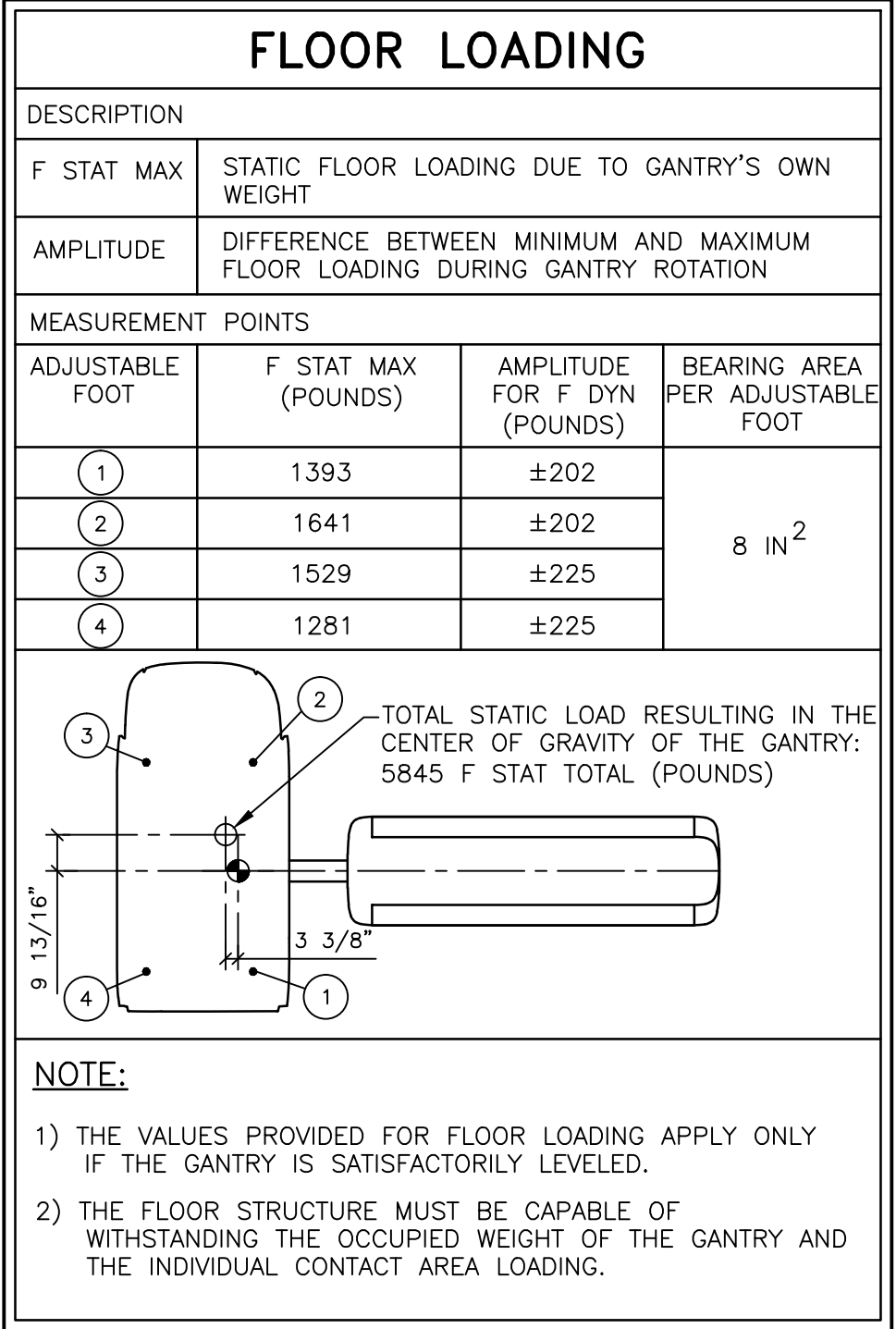
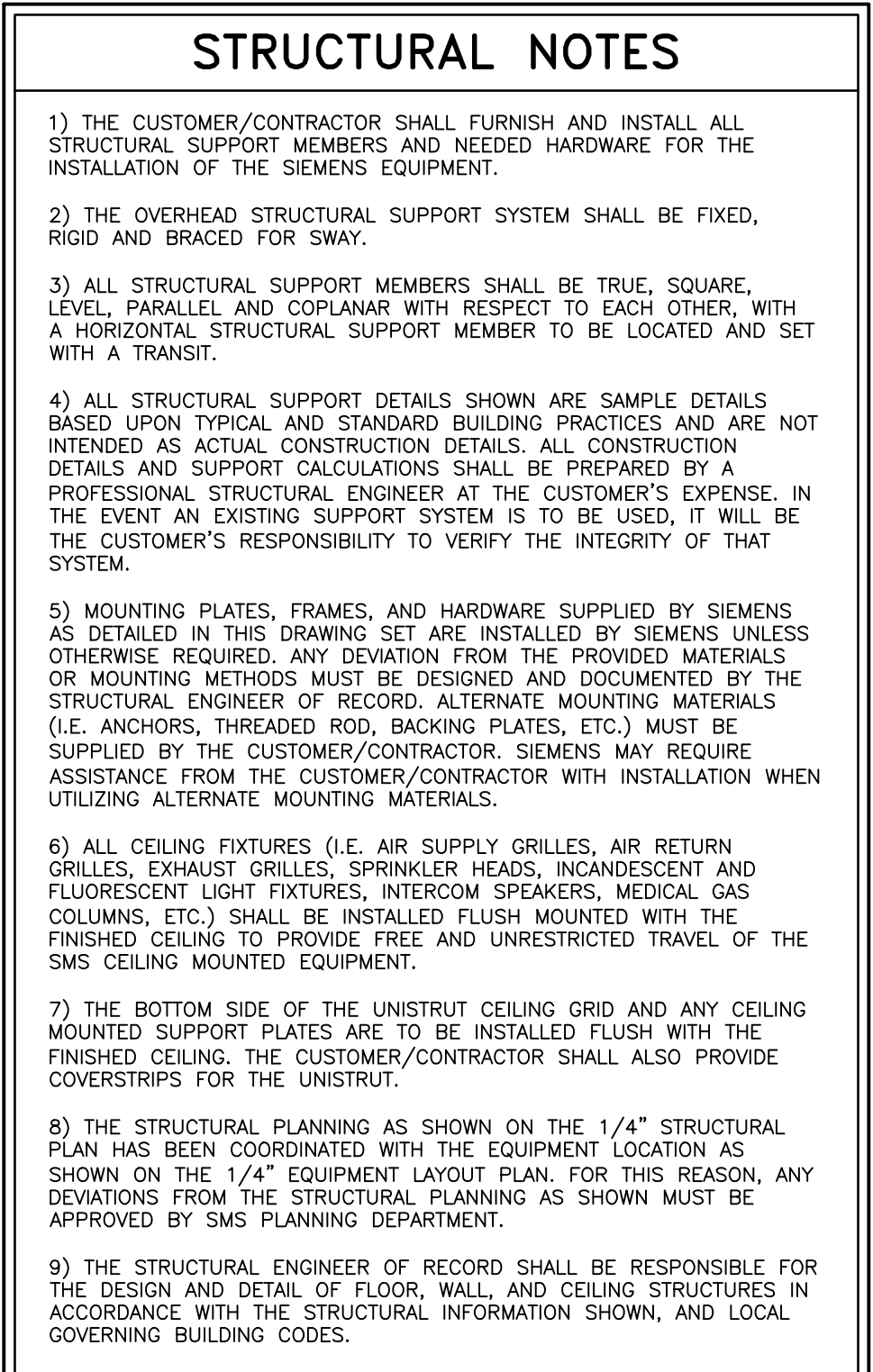
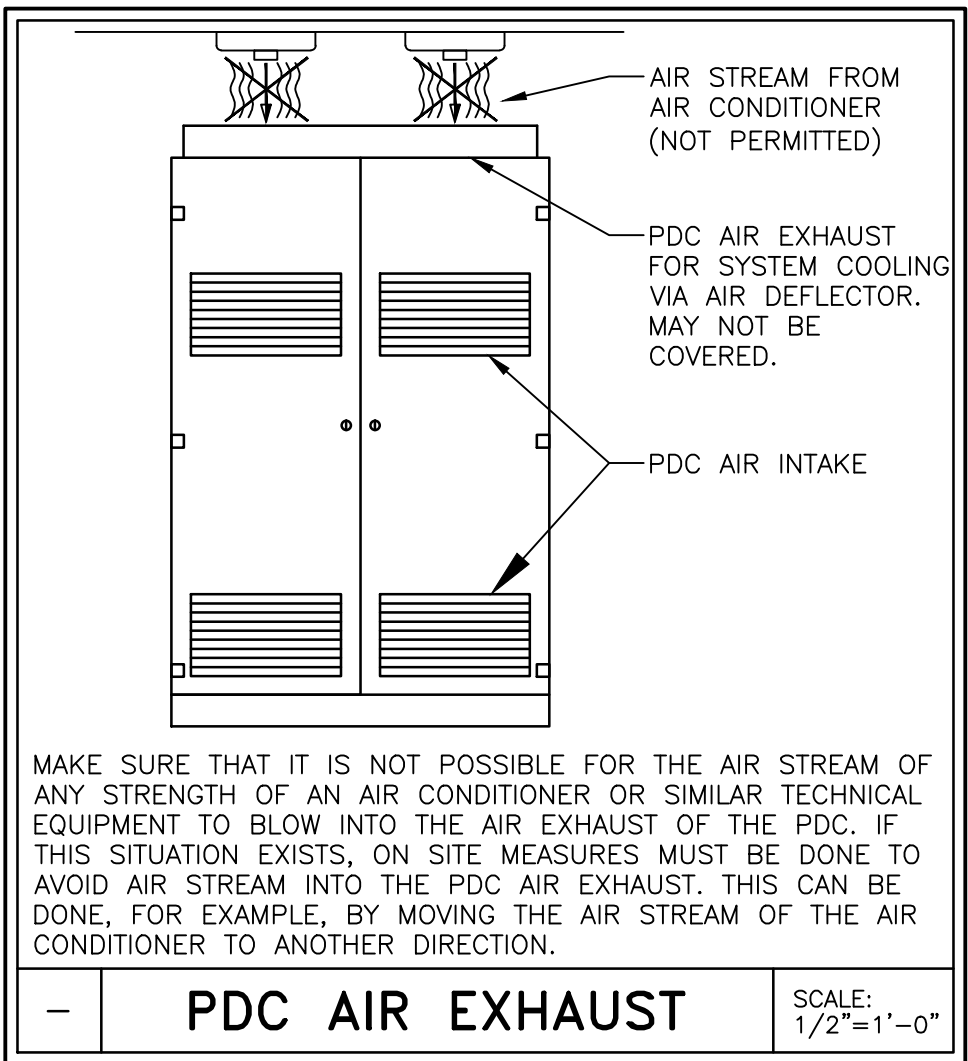
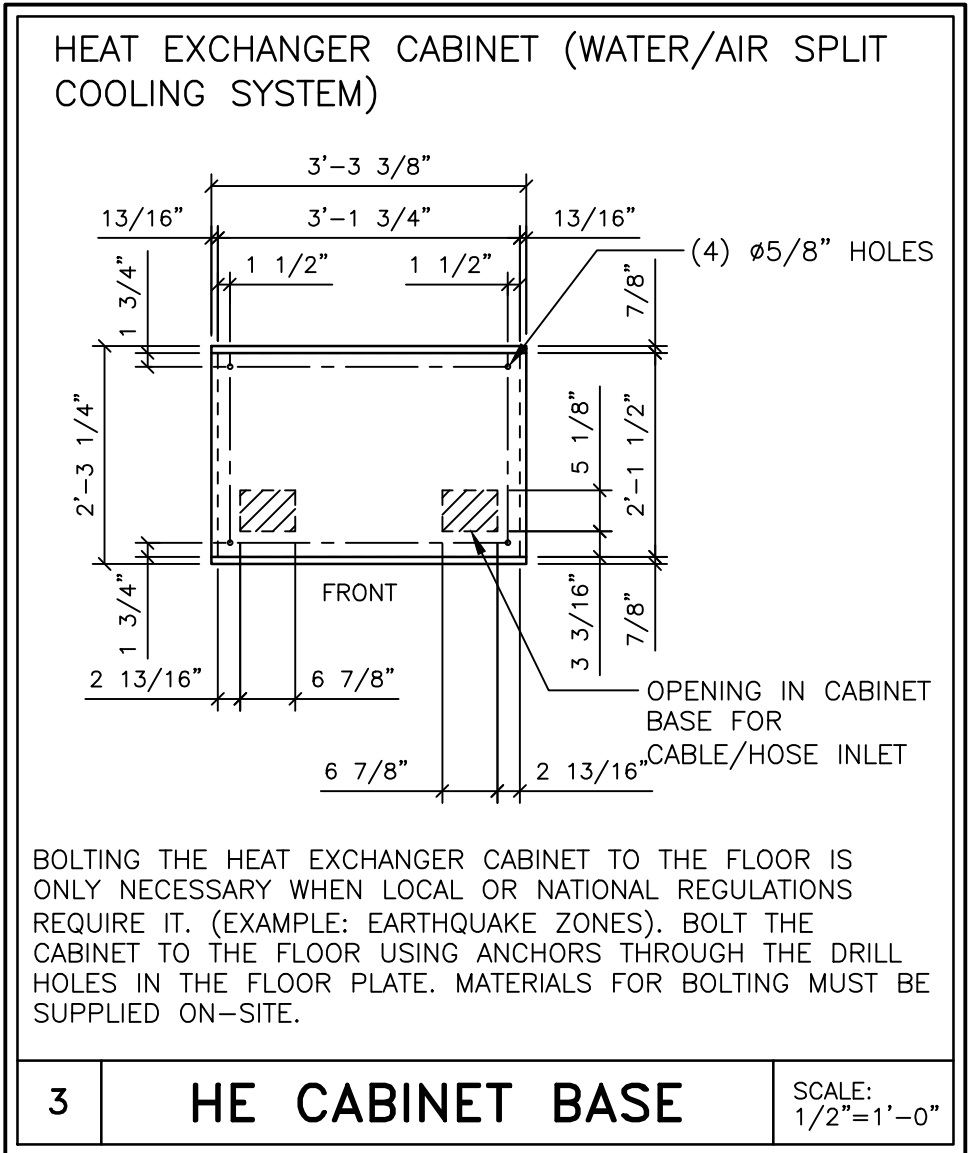
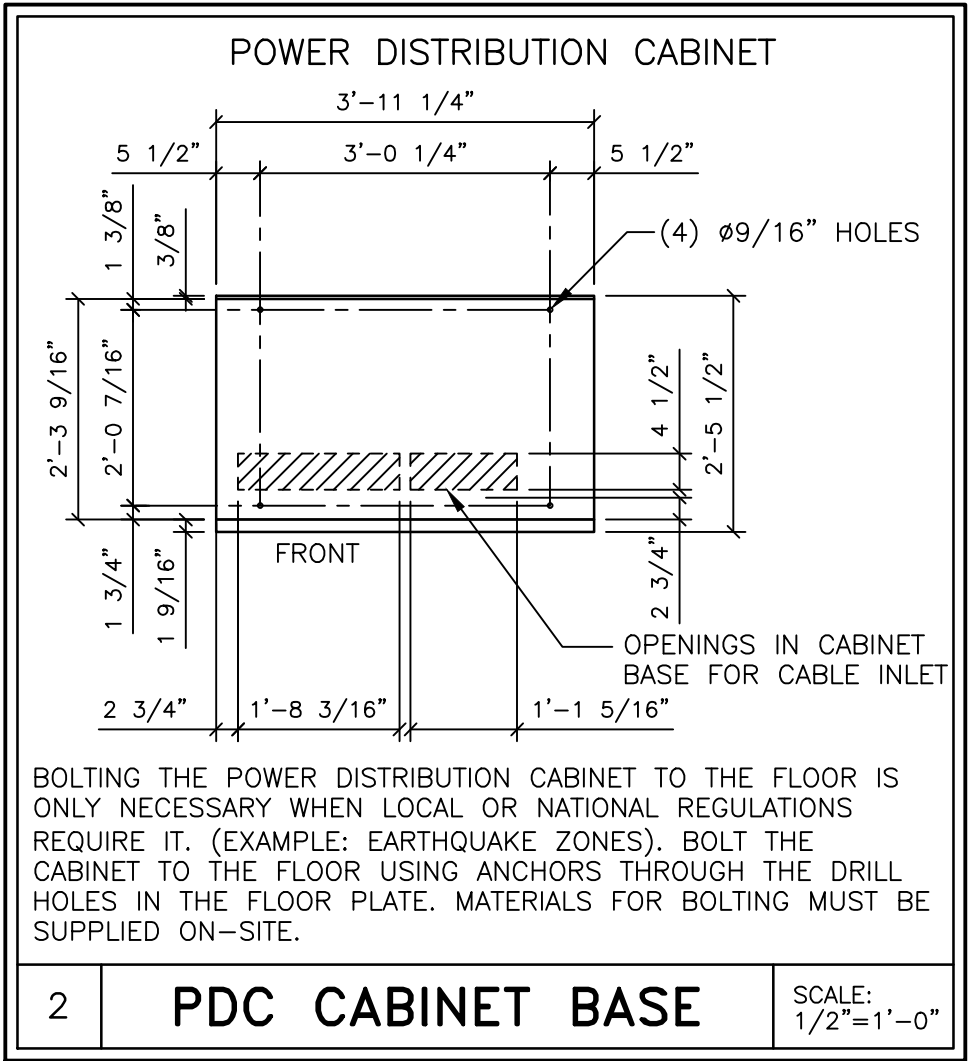
SCALE: AS NOTED  
REF. # 50187558

FORCE  
REV 2





FINISHED ROOM HEIGHT			
FOR CT GANTRY ONLY		MINIMUM 7'-6 9/16"	
CAREVISION MONITOR/CEILING MOUNT		MIN. 9'-2 5/8" MAX. 11'-2 5/8"	



ATTENTION:

THIS DRAWING IS DESIGNED TO CONFORM TO FEATURES AND EQUIPMENT REQUIREMENTS PRESENTED AT THE TIME OF THEIR PREPARATION. MODIFICATION, THEY ARE NOT TO BE USED FOR CONSTRUCTION PURPOSES. THIS SET OF PLANS REPRESENTS A COMPLETE SET OF DETAILS AND SHOULD NOT BE SEPARATED.

IT IS RECOMMENDED THAT THE SIEMENS DRAWINGS BE INCORPORATED WITH THE CONSTRUCTION DOCUMENTS FOR REFERENCE.

ALL DIMENSIONS SHOWN ON THIS DRAWING ARE FROM FINISHED SURFACES. THIS DRAWING DOES NOT PROVIDE RADIATION SHIELDING REQUIREMENTS FOR X-RAY AND ASSOCIATED EQUIPMENT. THE CUSTOMER IS RESPONSIBLE FOR CONSULTING WITH A REGISTERED RADIATION PHYSICIST TO SPECIFY RADIATION PROTECTION.

12/28/15

DATE

R-101RB VERSION DATED 10/19/15 APPROVED BY CUSTOMER FOR FINALS

SYM

12/28/15

DATE

DESCRIPTION

—ISSUE BLOCK—

PROJECT MANAGER: JIM STANCIL  
TEL: (415) 278-1915  
FAX:  
EMAIL: JIM.STANCIL@SIEMENS.COM

EXT:

SIEMENS

HEALTH CARE

300 PASTEUR DR., STANFORD, CA 94305  
CT ROOM - SOMATOM FORCE

THE USE OR REPRODUCTION OF THIS TITLE, BLOCK, WITHOUT SIEMENS AUTHORIZATION, WILL RESULT IN PROSECUTION UNDER FULL EXTENT OF THE LAW.

ALL RIGHTS ARE RESERVED.

SCALE: AS NOTED

REF. #0187558

PROJECT #:

1502692

SHEET: 3 OF 9

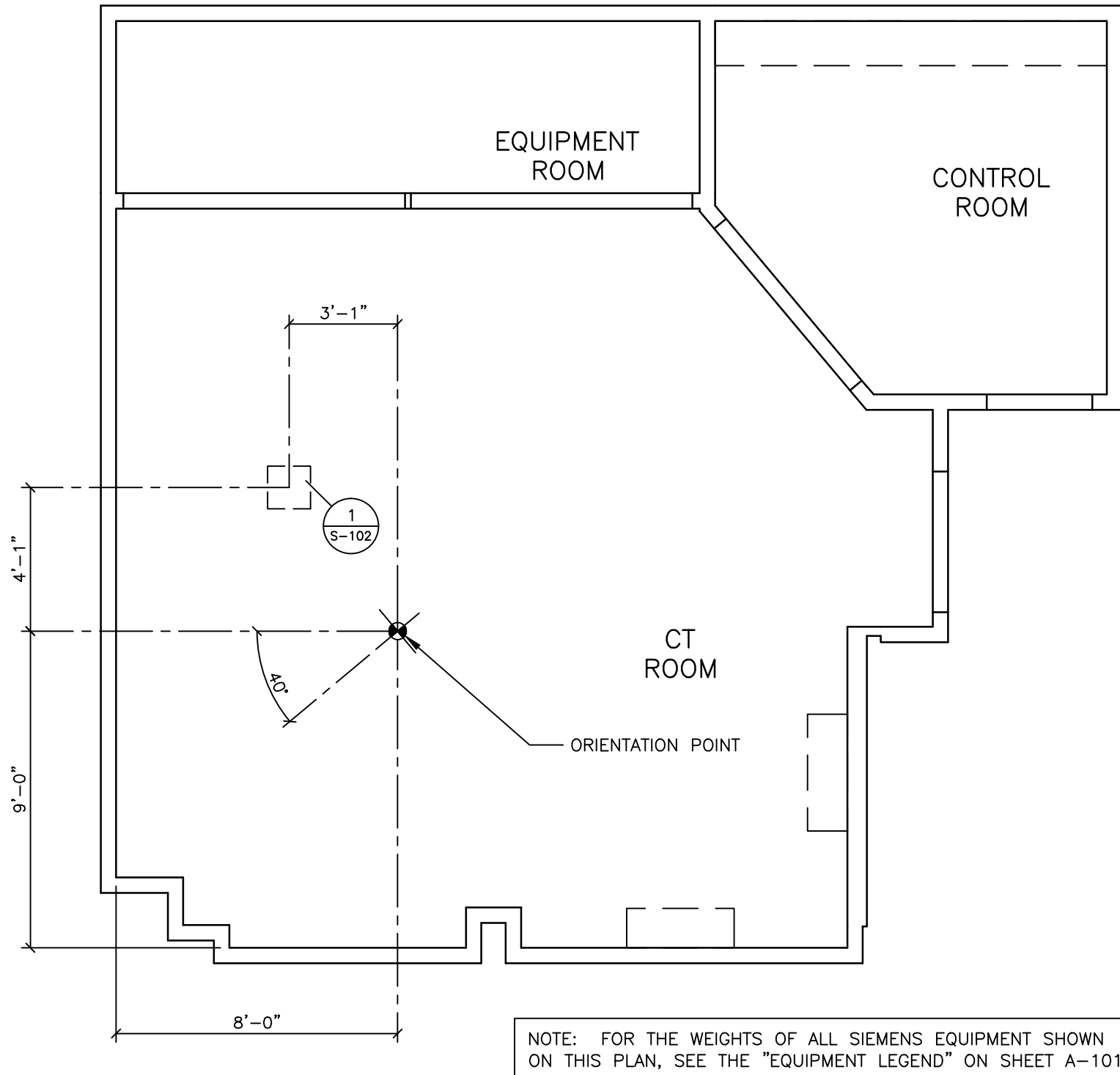
DRAWN BY: J. DRAMIS

DATE: 12/28/15

SHEET: S-101

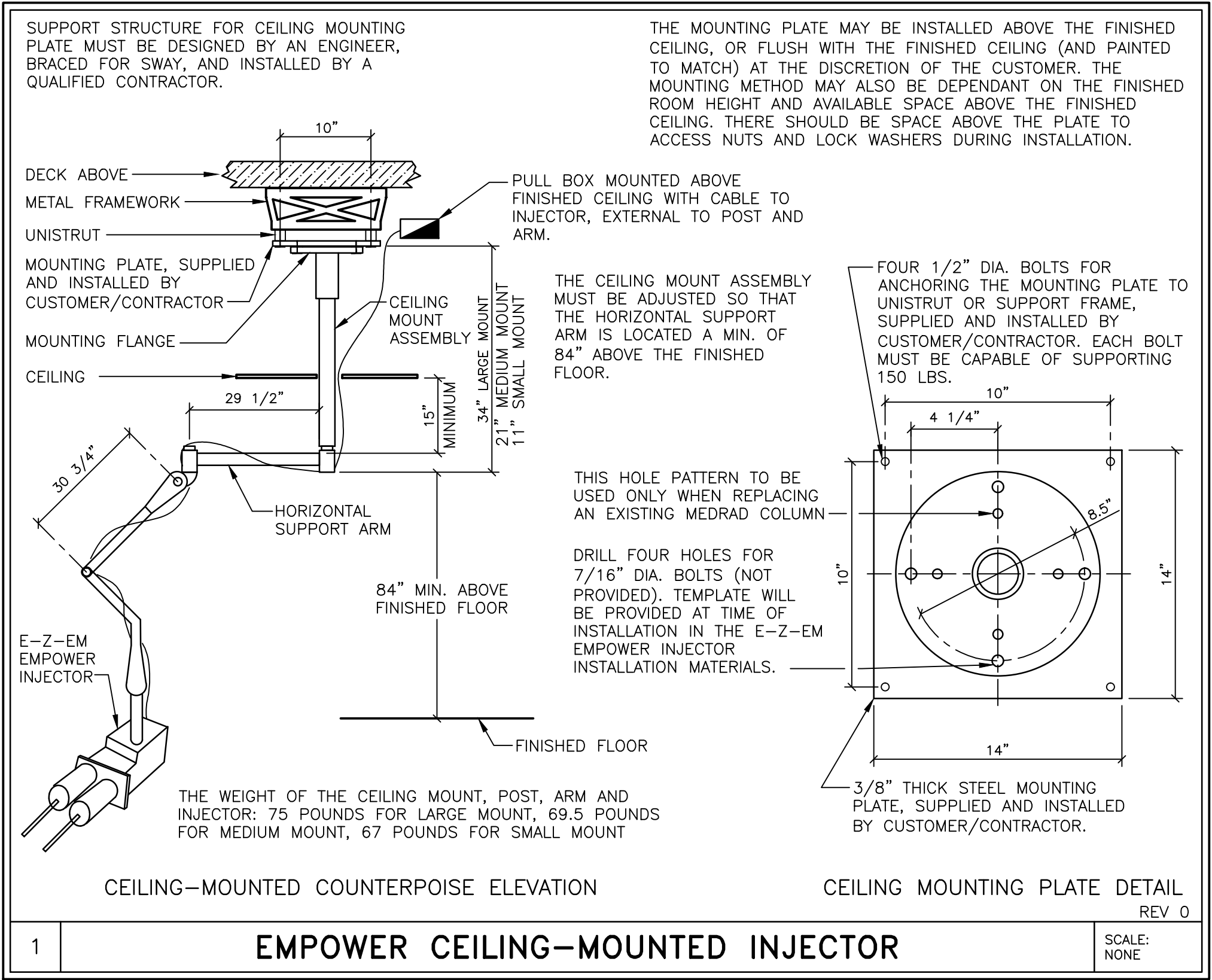
FORCE

REV 2



STRUCTURAL CEILING PLAN

SCALE: 1/4" = 1'-0"



FINISHED ROOM HEIGHT	
FOR CT GANTRY ONLY	MINIMUM 7'-6 9/16"
CAREVISION MONITOR/CEILING MOUNT	MIN. 9'-2 5/8" MAX. 11'-2 5/8"

ATTENTION:

—THIS DRAWING IS DESIGNED TO CONFORM TO FEATURES AND EQUIPMENT REQUIREMENTS PRESENTED AT THE TIME OF THEIR PREPARATION.  
MODIFICATION, THEY ARE NOT TO BE USED FOR CONSTRUCTION PURPOSES.  
—THIS SET OF PLANS REPRESENTS A COMPLETE SET OF DETAILS AND SHOULD NOT BE SEPARATED.

—IT IS RECOMMENDED THAT THE SIEMENS DRAWINGS BE INCORPORATED WITH THE CONSTRUCTION DOCUMENTS FOR REFERENCE.

—ALL DIMENSIONS SHOWN ON THIS DRAWING ARE FROM FINISHED SURFACES.  
—THIS DRAWING DOES NOT PROVIDE RADIATION SHIELDING REQUIREMENTS FOR X-RAY AND ASSOCIATED EQUIPMENT. THE CUSTOMER IS RESPONSIBLE FOR CONSULTING WITH A REGISTERED RADIATION PHYSICIST TO SPECIFY RADIATION PROTECTION.

			PROJECT MANAGER: JIM STANCIL TEL: (415) 278-1915 EXT: VMAIL: FAX: EMAIL: JIM.STANCIL@SIEMENS.COM	
			<b>SIEMENS</b>	
			<b>HEALTH CARE</b>	
			300 PASTEUR DR., STANFORD, CA 94305 CT ROOM — SOMATOM FORCE	
			PROJECT #: <b>1502692</b>	
			SHEET 4 OF 9 DRAWN BY: J. DRAMS	
			DATE: 12/28/15	
			ALL RIGHTS ARE RESERVED.	
			SCALE: AS NOTED REF. # 0187558	
			THE USE OR REPRODUCTION OF THIS TITLE BLOCK WITHOUT SIEMENS AUTHORIZATION WILL RESULT IN PROSECUTION UNDER FULL EXTENT OF THE LAW.	
			R-101RB VERSION DATED 10/19/15 APPROVED BY CUSTOMER FOR FINALS	
			SYM DATE DESCRIPTION	
			—ISSUE BLOCK—	

FORCE  
REV 2

**SIEMENS**

**HEALTH CARE**

300 PASTEUR DR., STANFORD, CA 94305  
CT ROOM — SOMATOM FORCE

PROJECT #:  
**1502692**

SHEET 4 OF 9  
DRAWN BY: J. DRAMS

DATE: 12/28/15

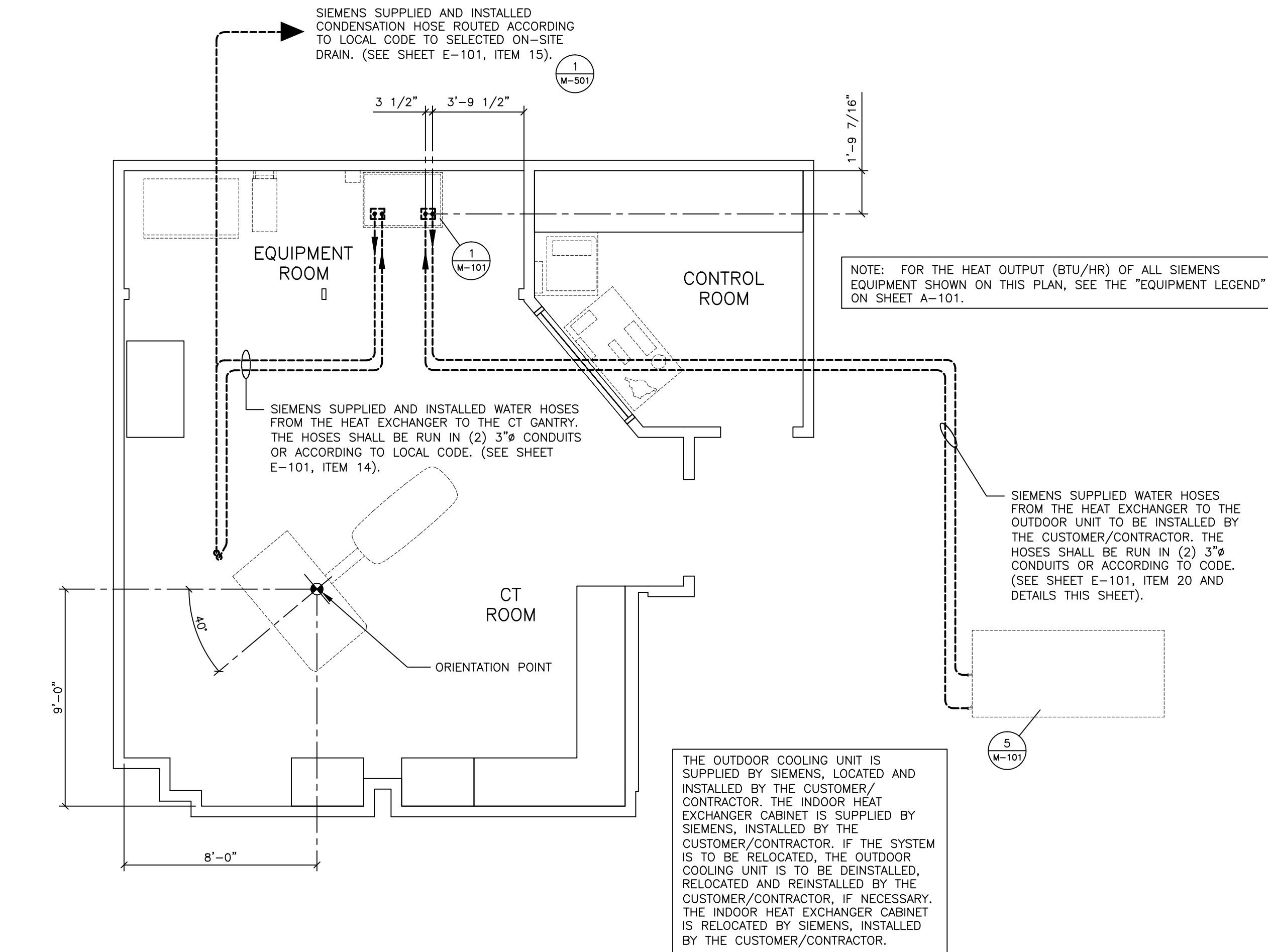
SHEET:  
**S-102**





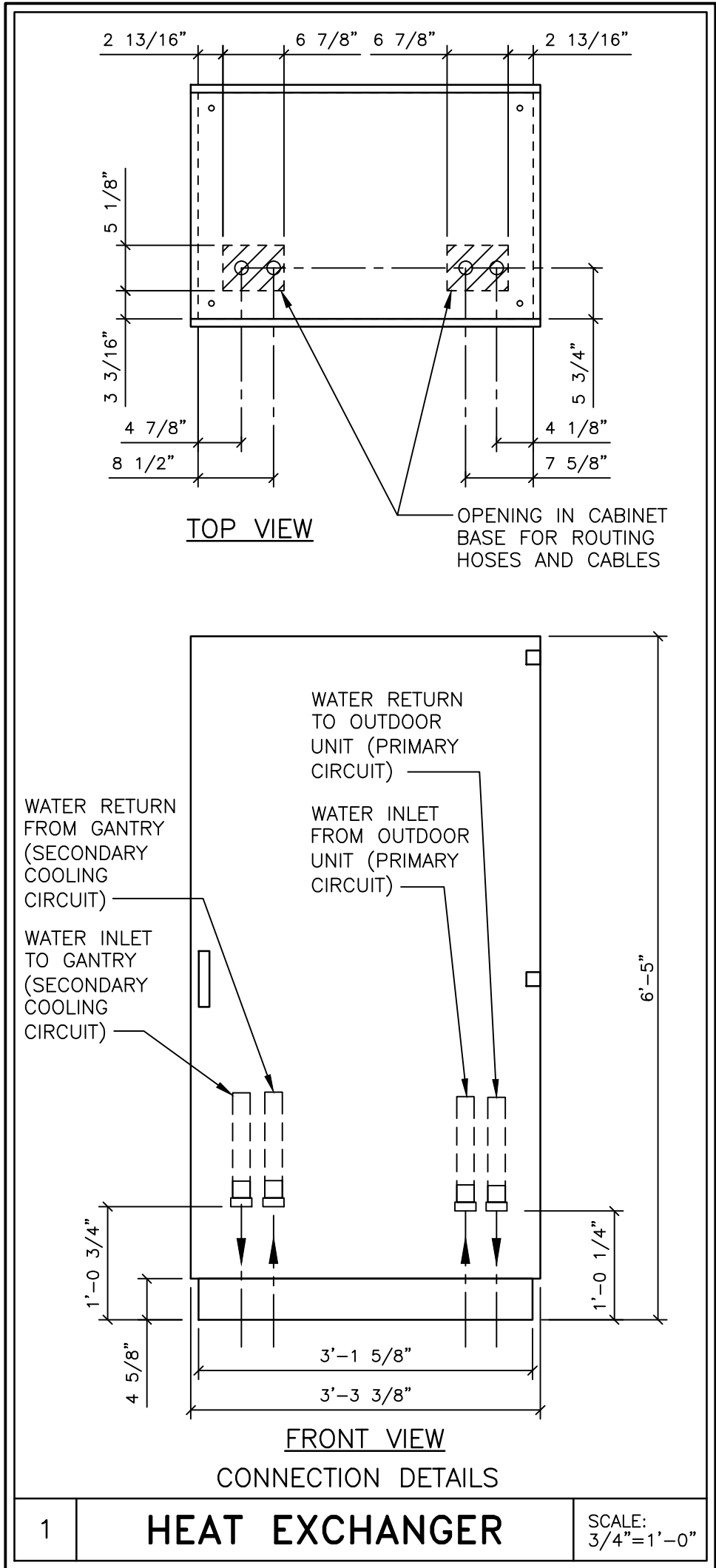
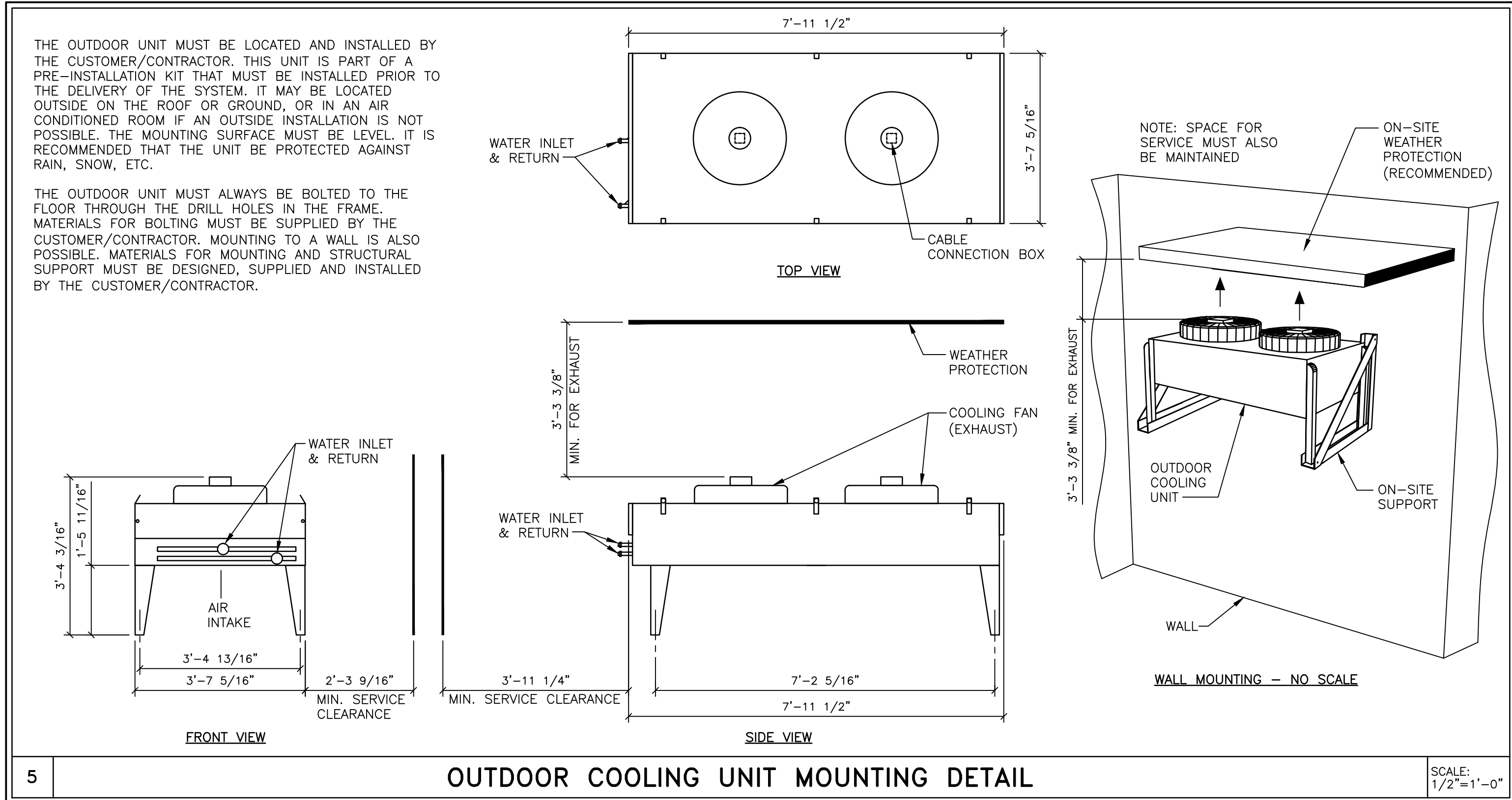




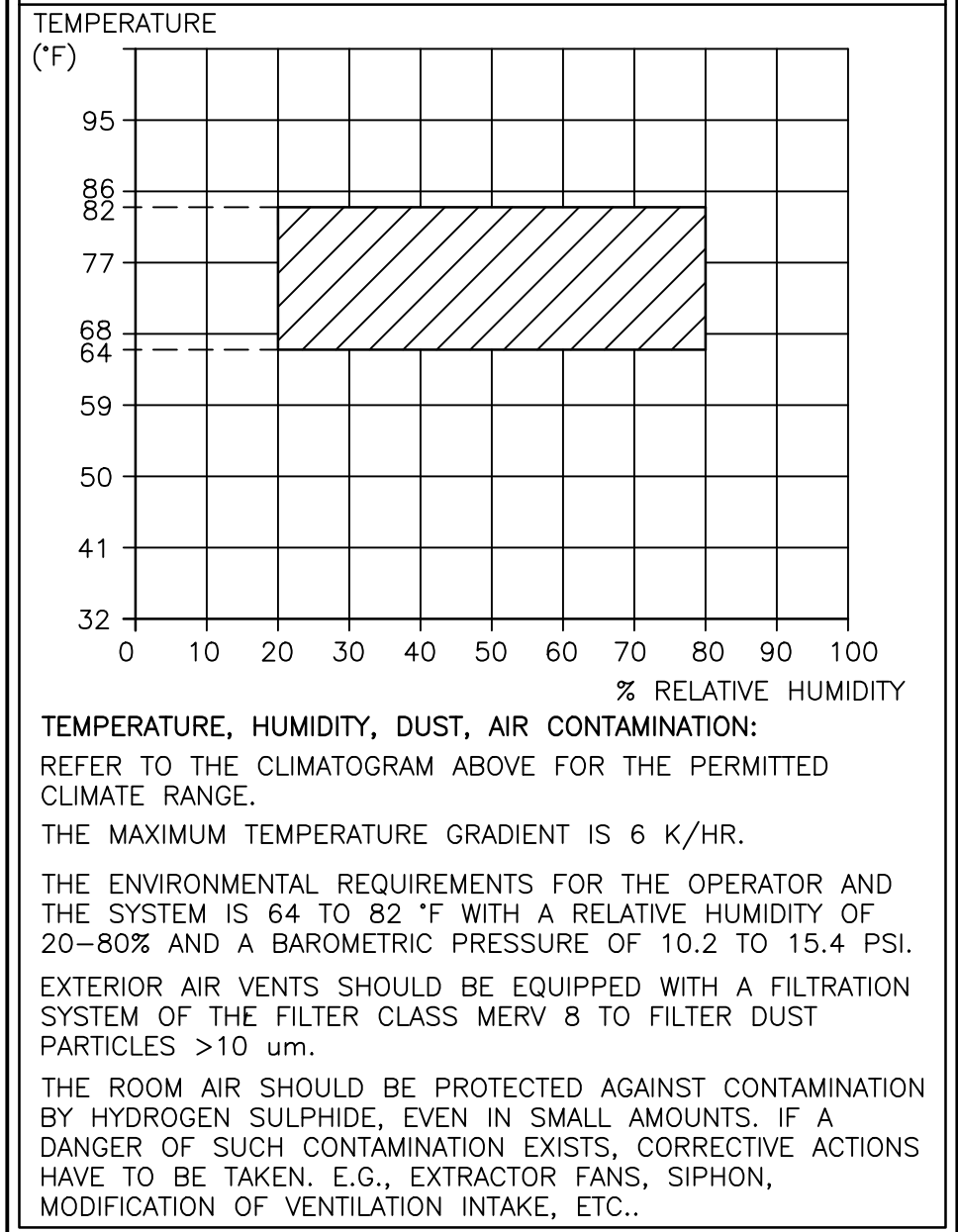


MECHANICAL PLAN

SCALE: 1/4" = 1'-0"

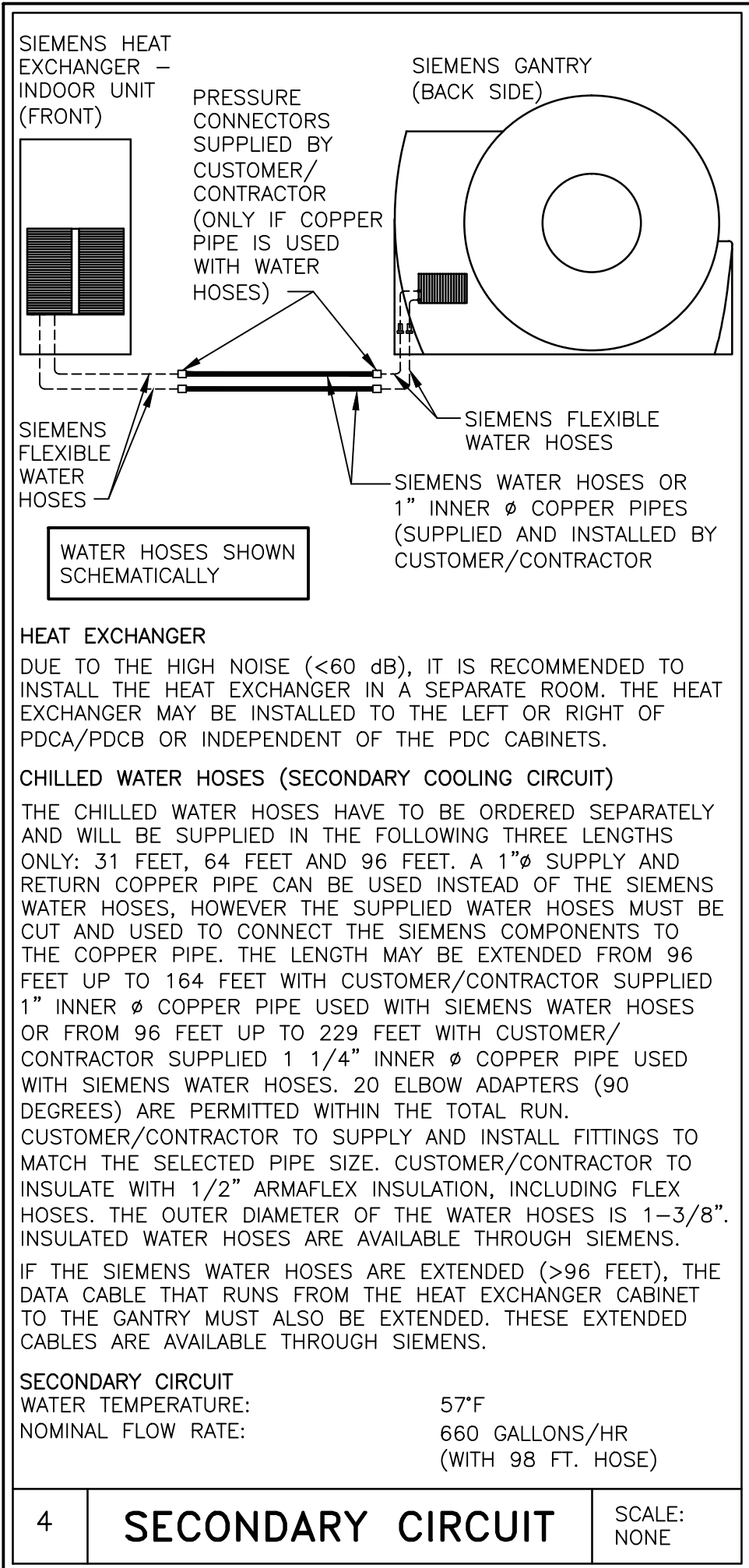
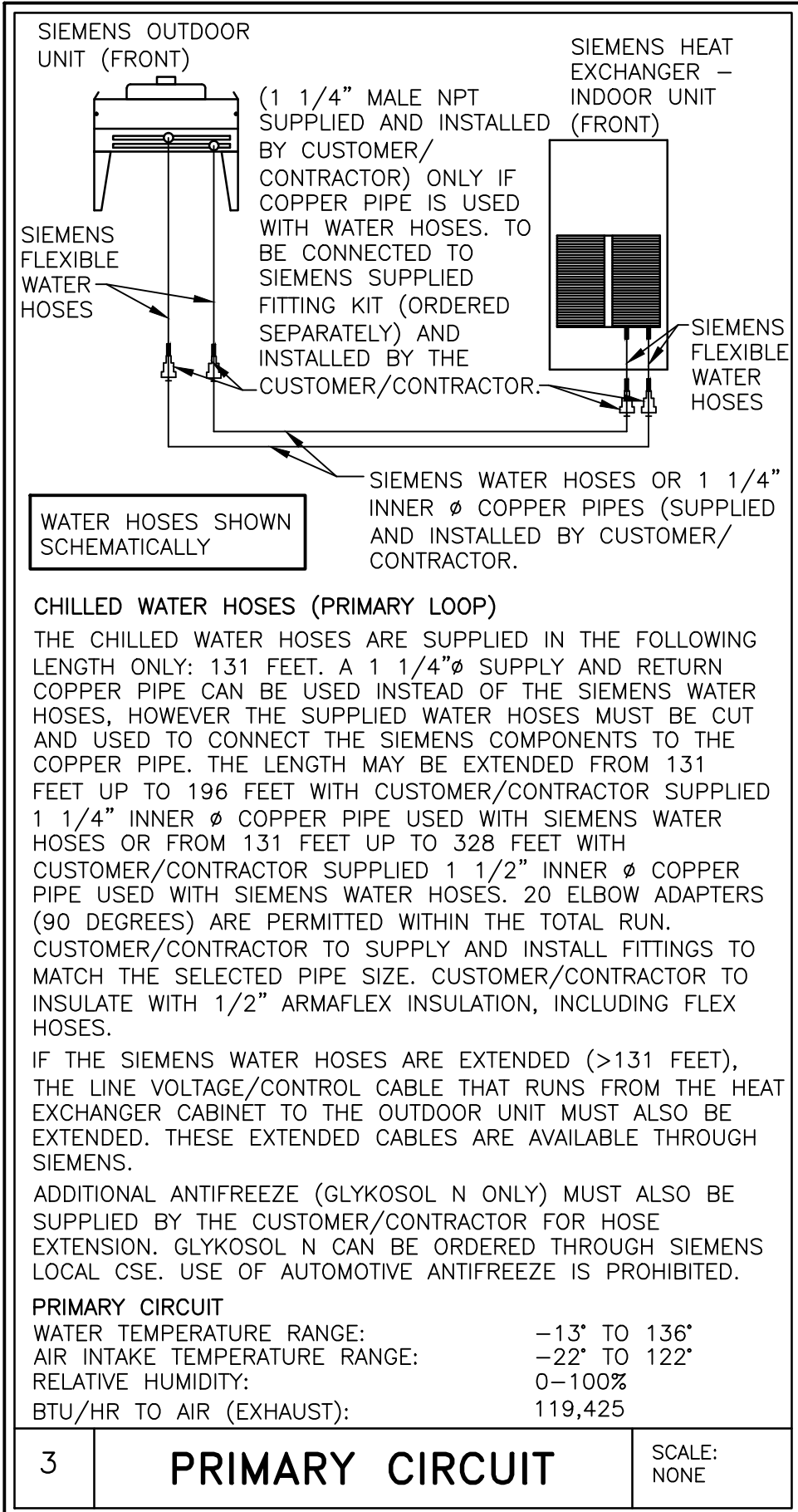
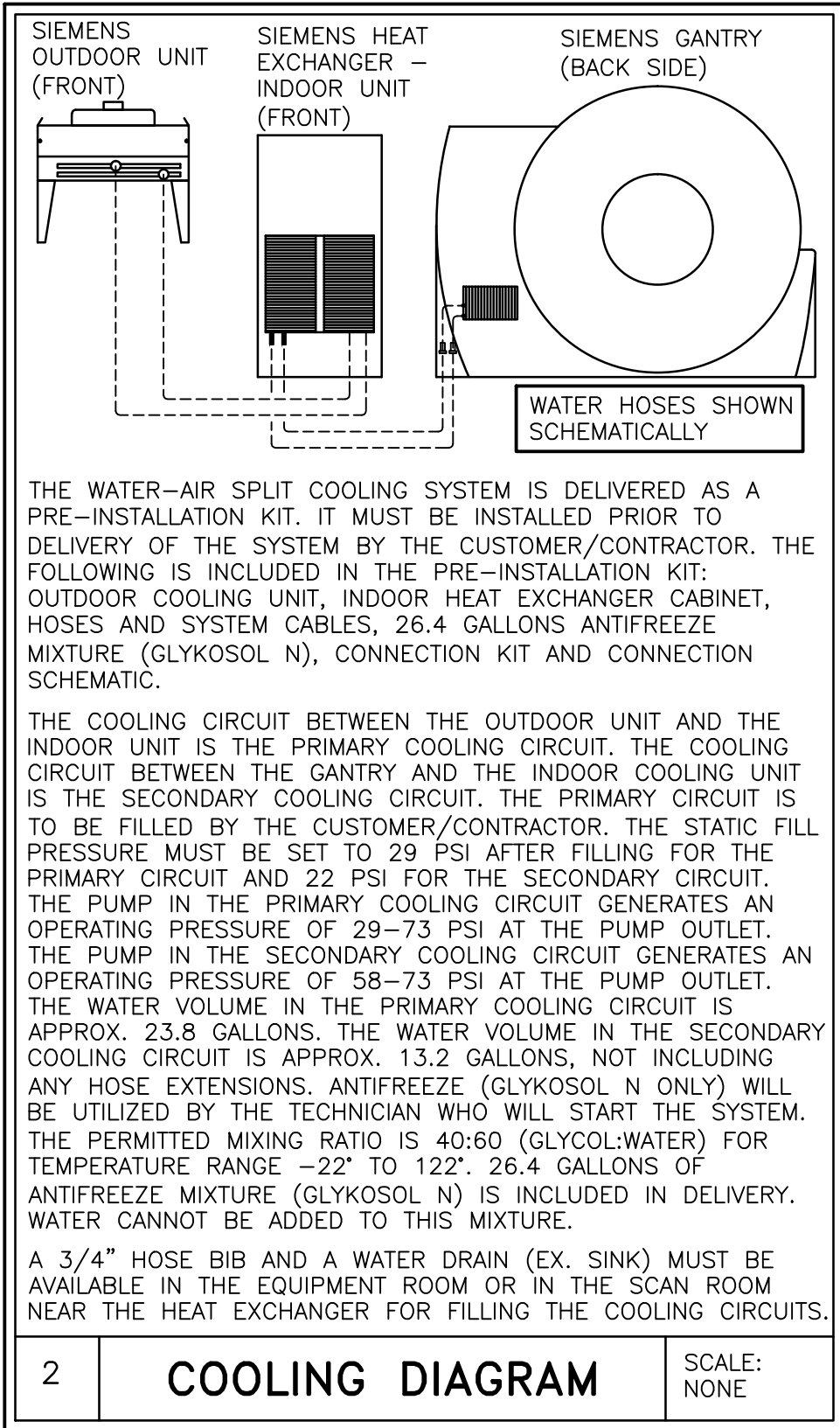


ENVIRONMENTAL REQUIREMENTS



FINISHED ROOM HEIGHT

FOR CT GENTRY ONLY	MINIMUM 7'-6 9/16"
CAREVISION MONITOR/CEILING MOUNT	MIN. 9'-2 5/8" MAX. 11'-2 5/8"



TECHNICAL DATA

TEMPERATURE RANGE OF WATER	-13°F TO 136°F MAXIMUM (PRIMARY COOLING CIRCUIT)
AMBIENT AIR TEMPERATURE RANGE (AIR INTAKE)	-22°F TO 122°F MAXIMUM 50°F (SECONDARY COOLING CIRCUIT)
FILTRATION	200 MICRONS
BTU/HR TO AIR (EXHAUST)	119,425

WATER QUALITY
THE WATER MUST BE OF DRINKABLE QUALITY. IF THE WATER IS OF LESSER QUALITY A FILTER WITH A MESH OF 200 MICRONS IS REQUIRED IN THE PRIMARY INLET SUPPLIED BY THE CUSTOMER/ CONTRACTOR.
ANTIFREEZE
ANTIFREEZE (GLYKOSOL N ONLY) MAY BE ADDED TO THE PRIMARY COOLING CIRCUIT ONLY, BY THE TECHNICIAN WHO WILL START THE SYSTEM. THE PERMITTED MIXING RATIO IS 40:60 (GLYCOL:WATER) FOR TEMPERATURE RANGE -22° TO 122°F. 26.4 GALLONS OF ANTIFREEZE MIXTURE (GLYKOSOL N) IS INCLUDED IN DELIVERY. WATER CANNOT BE ADDED TO THIS MIXTURE. USE OF AUTOMOTIVE ANTIFREEZE IS PROHIBITED.

ATTENTION:

- THIS DRAWING IS DESIGNED TO CONFORM TO FEATURES AND EQUIPMENT REQUIREMENTS PRESENTED  
AT THE TIME OF THEIR PREPARATION.  
MODIFICATION, THEY ARE NOT TO BE USED FOR CONSTRUCTION PURPOSES.  
- THIS SET OF PLANS REPRESENTS A COMPLETE SET OF DETAILS AND SHOULD NOT BE SEPARATED.

- IT IS RECOMMENDED THAT THE SIEMENS DRAWINGS BE INCORPORATED WITH THE CONSTRUCTION  
DOCUMENTS FOR REFERENCE.

- ALL DIMENSIONS SHOWN ON THIS DRAWING ARE FROM FINISHED SURFACES.  
- THIS DRAWING DOES NOT PROVIDE RADIATION SHIELDING REQUIREMENTS FOR X-RAY AND ASSOCIATED  
EQUIPMENT. THE CUSTOMER IS RESPONSIBLE FOR CONSULTING WITH A REGISTERED RADIATION  
PHYSICIST TO SPECIFY RADIATION PROTECTION.

			PROJECT MANAGER: JIM STANCIL TEL: (415) 278-1915 EXT: FAX: EMAIL: JIM.STANCIL@SIEMENS.COM	
			<b>SIEMENS</b>	
			<b>HEALTH CARE</b>	
			300 PASTEUR DR., STANFORD, CA 94305 CT ROOM - SOMATOM FORCE	
			PROJECT #: <b>1502692</b>	
			SHEET: <b>M-101</b>	
			SHEET 8 OF 9 DRAWN BY: J. DRAMS	
			DATE: 12/28/15	
			SCALE: AS NOTED REF. # 0187558	
THE USE OR REPRODUCTION OF THIS TITLE BLOCK, WITHOUT SIEMENS AUTHORIZATION, WILL RESULT IN PROSECUTION UNDER FULL EXTENT OF THE LAW.				
ALL RIGHTS ARE RESERVED.				
-ISSUE BLOCK-				



A WATER DRAIN IS REQUIRED TO BE SUPPLIED AND INSTALLED BY THE CUSTOMER/CONTRACTOR TO DRAIN CONDENSED WATER FROM THE GANTRY. THE DRAIN MUST BE WITHIN 32"-9" OF THE GANTRY (TO USE THE DELIVERED WATER HOSE) AND CANNOT EXCEED 13'-1 1/2" ABOVE THE FINISHED FLOOR. THE DISTANCE FROM THE GANTRY TO THE DRAIN MAY BE EXTENDED UP TO 65'-7" WITH EXTENSION MATERIAL PROVIDED BY THE CUSTOMER/CONTRACTOR. BELOW ARE SOME EXAMPLES OF POSSIBLE WATER DRAINS. THE MECHANICAL CONTRACTOR IS RESPONSIBLE FOR DETERMINING THE DRAIN TYPE TO USE AND FOR SPECIFYING, SUPPLYING AND INSTALLING THE PLUMBING FIXTURES NECESSARY TO CONNECT THE SIEMENS WATER HOSE TO THE SELECTED DRAIN.

SINK DRAIN

WALL

GENTRY (BACK SIDE)

SINK

WATER DRAIN

HOSE OUTLET

MAX. HEIGHT 13'-1 1/2"

SIEMENS CONDENSATION WATER HOSE  
(LENGTH: 32'-9", OUTSIDE DIA. 3/8").  
MAX. BENDING RADIUS 1 3/16".

The diagram illustrates the connection of a sink drain to a Siemens condensation water hose. On the left, a cross-section of a wall is shown with a sink and its drain. A vertical dimension line indicates a maximum height of 13'-1 1/2" from the floor to the top of the sink. The drain pipe leads down to a 'HOSE OUTLET' which has an arrow pointing left towards the hose. The hose is shown in profile, connected to the outlet and extending to the right towards a large circular component labeled 'GENTRY (BACK SIDE)'. Below the hose, text specifies it is a 'SIEMENS CONDENSATION WATER HOSE' with a length of 32'-9", an outside diameter of 3/8", and a maximum bending radius of 1 3/16".

GANTRY (TOP VIEW)

3'-9"

2'-9"

MIN. 4" FLOOR DRAIN AS REQUIRED PER LOCAL CODE. PROVIDE SURFACE MOUNTED PULL BOX OR SURFACE DUCT AS REQUIRED.

The diagram shows a top-down view of a rectangular gantry structure. The overall width is dimensioned as 3'-9" and the depth as 2'-9". A floor drain is indicated by a circle with a crosshair in the center of the structure. A callout line points to the floor drain with the text: "MIN. 4" FLOOR DRAIN AS REQUIRED PER LOCAL CODE. PROVIDE SURFACE MOUNTED PULL BOX OR SURFACE DUCT AS REQUIRED."

## ATTENTION:

- ALL DIMENSIONS SHOWN ON THIS DRAWING ARE FROM FINISHED SURFACES.  
- THIS DRAWING DOES NOT PROVIDE RADIATION SHIELDING REQUIREMENTS FOR X-RAY AND ASSOCIATED EQUIPMENT. THE CUSTOMER IS RESPONSIBLE FOR CONSULTING WITH A REGISTERED RADIATION PHYSICIST TO SPECIFY RADIATION PROTECTION.

FORCE  
REV 2

**SIEMENS**

## HEALTH CARE

300 PASTEUR DR., STANFORD, CA 94305  
CT ROOM - SOMATOM FORCE

PROJECT #:
------------

**1502692**

SHEET 9 OF 9	DRAWN BY: J. DRAM
--------------	----------------------

58	DATE: 12/28/15	
----	----------------	--

SHEET:

M-501