

SUPPORT PLATFORM

PROJECT ADDRESS

SB1022 FAIRFIELD
2500 CLAY BANK RD.
FAIRFIELD, CA 94533

CODE COMPLIANCE

- THIS PROJECT SHALL COMPLY WITH CALIFORNIA BUILDING CODE 2016.
- BASED ON SBMF (SPECIAL BOLTED MOMENT FRAME - AISI) IN BOTH DIRECTIONS, PINNED BASE, UNLESS OTHERWISE CALLED OUT.
- STAIRS COMPLY WITH ADA, AMERICANS WITH DISABILITIES ACT/CALIFORNIA 2016 EDITION.

DEFERRED SUBMITTALS

- SPRINKLER PERMITS BY OTHERS.
- ELECTRICAL PERMITS BY OTHERS.

GENERAL NOTES

- SPECIAL INSPECTION REQUIRED FOR ANCHOR BOLTS.
- NO FIELD WELDING REQUIRED.
- SITE PLAN PROVIDED BY OTHERS.

SPECIFIC USE DATA

OCCUPANCY LOAD: 1-2 PEOPLE (PER TABLE 1004.1.2)
OCCUPANCY CLASS: GROUP S-2
SPECIFIC USE: LIGHT STORAGE

SEISMIC DATA

Ss 1.93
S1 0.66
SITE CLASS D
IMPORTANCE FACTOR 1.0
Fa 1.0
Fv 1.5
LATITUDE 38.27 LONGITUDE -122.00

DESIGN DATA

1 1/8" COMP-DECK 5.2 PSF
STEEL DECK 1.9 PSF
STEEL JOISTS 3.9 PSF
STEEL BEAMS/COLS 3.9 PSF
MISCELLANEOUS 2.2 PSF
DEAD LOAD 17.1 PSF
LIVE LOAD 125.0 PSF
TOTAL LOAD 142.1 PSF

EXISTING BUILDING DATA

- DESIGN PRESSURE IS 1500 PSF SOIL
- 6" SLAB
- 2500 PSI CONCRETE
- BUILDING TYPE:
- PROJECT SQUARE FOOTAGE 1610
- FULLY SPRINKLED: YES/NO

STEEL NOTES

- GRADE AND FABRICATION:**
ALL STRUCTURAL STEEL SECTIONS AND WELDED PLATE MEMBERS SHALL CONFORM TO ASTM A36 UNLESS NOTED AS GR.50 ON THE PLANS, IN WHICH CASE THEY SHALL CONFORM TO ASTM A572. STRUCTURAL STEEL TUBING SHALL CONFORM TO ASTM A-500 GRADE "C". STEEL PIPE COLUMNS SHALL BE GRADE "B" CONFORMING TO ASTM A53. ALL PRIMARY AND SECONDARY FRAMING MEMBERS ARE FABRICATED FROM ASTM A653 GRADE 55 (Fy-55 KSI. MIN.) AND ARE G60 GALVANIZED.
- BOLTS:**
ALL BOLTS SHALL CONFORM TO ASTM A307 AND SAE GRADE 5 UNLESS OTHERWISE NOTED ON PLANS.
- WELDS:**
ALL SHOP WELDING SHALL BE DONE USING E70 ELECTRODES w/ A MIN. CHARPY V-NOTCH VALUE OF 20 FT.-LBS @ 20F°. ALL WELDERS SHALL BE PROPERLY QUALIFIED AND BE PRE-APPROVED. ALL WELDING SHALL COMPLY WITH THE LATEST A.W.S. SPECIFICATIONS. NO BUZZ BOXES SHALL BE USED. WHEN WELDING A36 STEEL MORE THAN 1" THICK, USE LOW HYDROGEN ELECTRODES.
- GENERAL NOTES:**
WELDING BY FCP INC. SHALL CONFORM TO THE LA CITY FABRICATORS LICENSE REQUIREMENTS. THE CITY OF LOS ANGELES HAS ISSUED FABRICATORS LICENSE #1697 (FB01697) TO FCP INC. (EXPIRATION DATE OCT. 1, 2017).
- SPECIAL INSPECTION:**
A SPECIAL INSPECTOR NEED NOT BE PRESENT DURING WELDING OF THE FOLLOWING ITEMS, PROVIDED THE MATERIALS, QUALIFICATIONS OF WELDING PROCEDURES AND WELDERS ARE VERIFIED PRIOR TO THE START OF WORK IN PROGRESS, AND A VISUAL INSPECTION OF ALL WELDS ARE MADE PRIOR TO COMPLETION OR PRIOR TO SHIPMENT OF SHOP WELDING:
A. SINGLE-PASS FILLET WELDS NOT EXCEEDING 5/16" IN SIZE. (REQUIRES PERIODIC INSPECTION.)
B. FLOOR AND ROOF DECK.
C. WELDED STUDS WHEN USED FOR STRUCTURAL DIAPHRAGM OR COMPOSITE SYSTEM.
D. WELDED SHEET STEEL FOR COLD-FORMED STEEL FRAMING MEMBERS I.E. STUDS, JOIST.
E. WELDING OF STAIRS AND RAILING SYSTEMS.

- REINFORCING RODS:**
WELDED IN COLD-FORMED STRUCTURAL MEMBERS ARE HOT ROLLED. A307, A706 GRADE 60 OR A572.
- METAL DECK:**
METAL DECK ASC STEEL DECK (ES REPORT ESR#1414)

BOLT TIGHTENING CONDITIONS

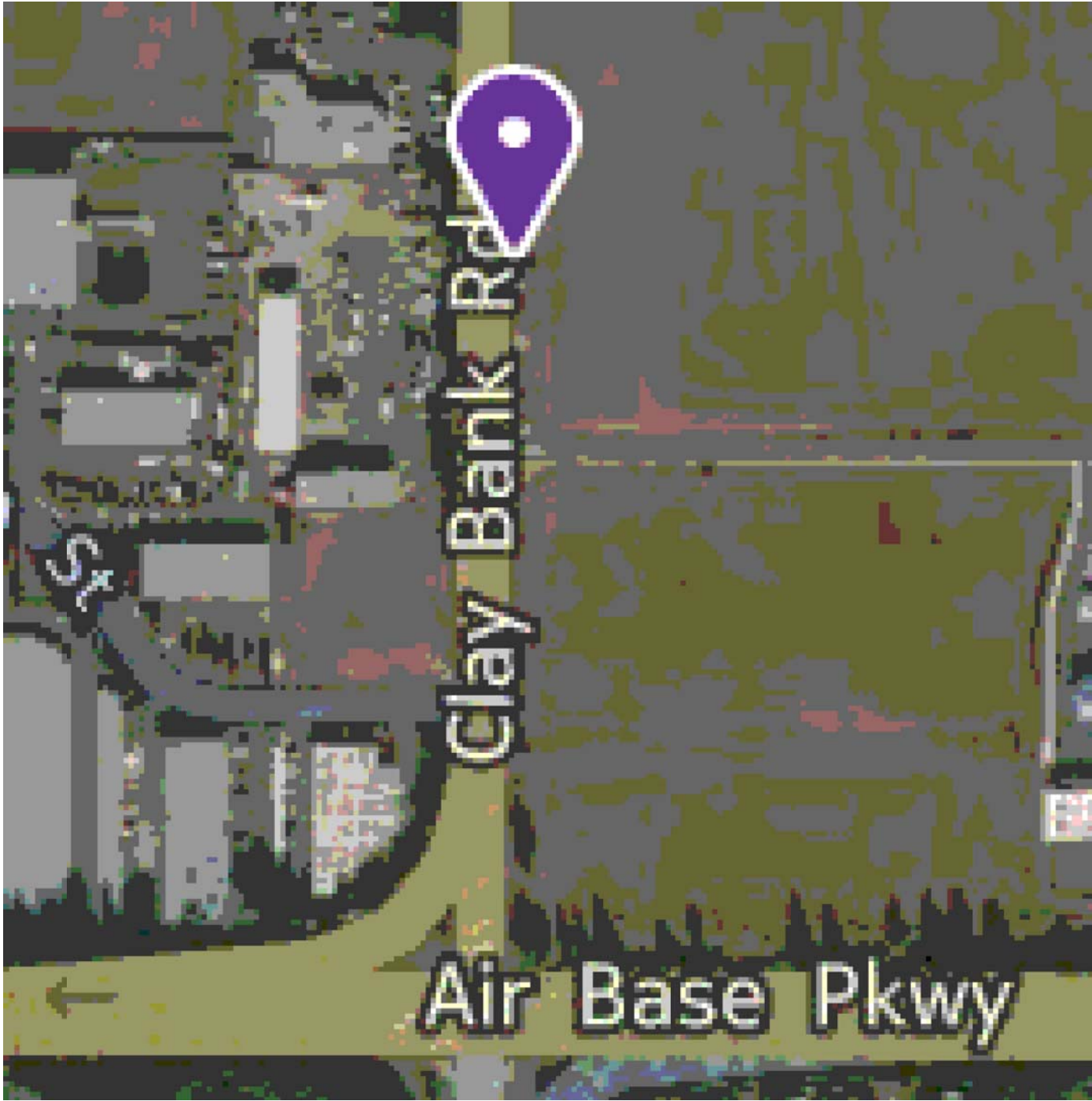
- ALL MACHINE BOLTS TO BE BEARING TYPE CONNECTIONS AND SHALL BE TIGHTENED TO A SNUG TIGHT CONDITION. THE SNUG TIGHT CONDITION IS DEFINED AS THE TIGHTNESS THAT EXISTS WHEN ALL PLIES IN A JOINT ARE IN FIRM CONTACT. THIS MAY BE ATTAINED BY A FEW IMPACTS OF AN IMPACT WRENCH OR THE TIGHTENING A PERSON CAN ACHIEVE WITH FULL STRENGTH WITH AN ORDINARY SPUD WRENCH.
- ALL CONNECTIONS USE SHEAR VALUES ONLY, NO FRICTION VALUES REQUIRED FOR CONNECTION STRENGTH. ALL CONNECTIONS SHALL BE TIGHTENED BY THE TURN-OF-NUT METHOD. BOLTS SHAL BE INSTALLED IN ALL HOLES OF THE CONNECTION AND BROUGHT TO A SNUG TIGHT CONDITION. SNUG TIGHTENING SHALL PROGRESS SYSTEMATICALLY FROM THE MOST RIGID PART OF THE CONNECTION TO THE FREE EDGES, AND AS NECESSARY UNTIL ALL BOLTS ARE SIMULTANEOUSLY SNUG TIGHT. THE CONNECTION SHALL THEN BE TIGHTENED FURTHER BY THE APPLICABLE AMOUNT OF ROTATION SPECIFIED IN THE TABLE BELOW:

TABLE 22-IV-E NUT ROTATION FROM SNUG TIGHT CONDITION

DISPOSITION OF OUTER FACE OF BOLTED PARTS			
BOLT LENGTH (UNDERSIDE OF HEAD TO END OF BOLT)	BOTH FACES NORMAL TO BOLT AXIS	ONE FACE NORMAL TO BOLT AXIS, OTHER SLOPED NOT MORE THAN 1:20 (BEVELED WASHER NOT USED)	BOTH FACES SLOPED NOT MORE THAN 1:20 FROM NORMAL TO THE BOLT AXIS (BEVELED WASHER NOT USED)
NOT MORE THAN 4d	½ TURN	½ TURN	½ TURN
MORE THAN 4d BUT NOT EXCEEDING 8d	½ TURN	¾ TURN	¾ TURN
MORE THAN 8d BUT NOT EXCEEDING 12d	¾ TURN	¾ TURN	1 TURN

ANCHOR BOLT

- GRADE AND FABRICATION:**
FOR ANCHORAGE IN CONCRETE USE ONE OF THE FOLLOWING:
SIMPSON STRONG-BOLT 2 WEDGE ANCHOR (ESR-3037, LARR #25891) (SUPPLIED BY INSTALLER). SEE SHEET S1.1 FOR SIZE & EMBEDMENT.
HILTI KWIK BOLT TZ WEDGE ANCHOR (ESR-1917, LARR #25701) (SUPPLIED BY INSTALLER). SEE SHEET S1.1 FOR SIZE & EMBEDMENT.
POWERS POWER STUD SD1 EXPANSION ANCHOR (ESR-2818, LARR # 25787) (SUPPLIED BY INSTALLER). SEE SHEET S1.1 FOR SIZE & EMBEDMENT.
- INSTALLATION:**
 - DRILL A HOLE IN THE CONCRETE USING A BIT THE SAME DIAMETER AS THE NOMINAL DIAMETER OF THE ANCHOR. DRILL THE HOLE TO THE SPECIFIED EMBEDMENT DEPTH PLUS ONE ANCHOR DIAMETER. CLEAR THE HOLE OF ALL EXCESS DEBRIS AND CONCRETE DUST.
 - ASSEMBLE THE ANCHOR WITH NUT AND WASHER SO THE TOP OF THE NUT IS FLUSH WITH THE TOP OF THE ANCHOR. PLACE THE ANCHORS THRU THE HOLES OF THE BASE PLATE AND DRIVE INTO THE HOLES UNTIL THE WASHER AND NUT ARE TIGHT AGAINST THE BASEPLATE.
 - TIGHTEN THE NUT TO THE REQUIRED INSTALLATION TORQUE. REFER TO ESR-3037, TABLE 1 OR ESR-1917 TABLE 1.



SHEET INDEX

G1.1 - S5.5

G1.1 GENERAL NOTES	S5.1 STANDARD DETAILS
S1.1 FOUNDATION PLAN	S5.2 DECKING CONNECTION DETAILS
S1.2 DECK FRAMING PLAN	S5.3 GUARDRAIL CONNECTION DETAILS
	S5.4 LANDING DETAILS
	S5.5 STAIR DETAILS

ABBREVIATIONS

A.B.	ANCHOR BOLT	(E)	EXISTING	L.W.	LIGHTWEIGHT	S.S.	STAINLESS STEEL
ARCH	ARCHITECT	EA	EACH			SHTG	SHEATHING
		EQ	EQUAL	M.B.	MACHINE BOLT	SIM	SIMILAR
BOT	BOTTOM	E.W.	EACH WAY	MAX.	MAXIMUM	SQ	SQUARE
BLDG	BUILDING	EX	EXTERIOR	MECH	MECHANICAL	ST	STEEL
BM	BEAM			MIN	MINIMUM		
B.O.B	BOTTOM OF BEAM	F.F.	FINISHED FLOOR	MISC	MISCELLANEOUS	T	TOP
		F.J.	FLOOR JOIST			T&B	TOP & BOTTOM
CL	CENTER LINE	FDTN	FOUNDATION	(N)	NEW	T.O.B.	TOP OF BEAM
CMU	CONCRETE MASONRY	FLR	FLOOR	N.T.S.	NOT TO SCALE	T.O.D.	TOP OF DECK
		FT.	FOOT or FEET			T.O.S.	TOP OF SLAB
CLR	CLEAR	FTG.	FOOTING	O.C.	ON CENTER	T.S.	TUBULAR STEEL
COL	COLUMN			O.D.	OUTSIDE DIAMETER	TYP	TYPICAL
CONC	CONCRETE	GA.	GAUGE			U.N.O.	UNLESS NOTED OTHERWISE
CONT	CONTINUOUS	GALV	GALVANIZED	PL	PLATE		
		GYP	GYPSUM				
Ø	DIAMETER	HORIZ.	HORIZONTAL	R	RADIUS	VERT.	VERTICAL
DBL	DOUBLE	H.S.B.	HIGH STRENGTH BOLT	REINF	REINFORCE(D)(ING)	X.S.	EXTRA STRONG
DET	DETAIL	HSS	HOLLOW STRUCTURAL SECTION	REQD	REQUIRED(ING)		
DIM	DIMENSION			REV	REVISED		
DN	DOWN	I.D.	INSIDE DIAMETER				
		INT	INTERIOR				

LEGEND

	CONCRETE WALL		COLUMN GRID REFERENCE		MEMBER SIZE (CALL OUT)
	GYPSON BOARD WALL		VIEW/SECTION		ACCESS HOLE LOCATOR
	SHEET (METAL)		DETAIL NUMBER		JOIST BRIDGING
	BLOCK WALL		DETAIL CALLOUT/SECTION		CAUTION AREA
	UNKNOWN WALL		SHEET NUMBER		
	(E) STRUCTURAL COLUMN				
	(E) ROUND COLUMN				
	(E) SQUARE COLUMN				
	(E) FOOTING				
	(E) GRADE BEAM				
	ELEVATION CHANGE				



ATTENTION: DEALER/RECTOR/END USER
THIS DRAWING AND ALL INFORMATION HEREON, REMAINS THE SOLE PROPERTY OF FCP INC. (FCP). IT IS TO BE USED ONLY FOR THE PROJECT AND NOT TO BE REPRODUCED, COPIED, OR USED FOR ANY OTHER PURPOSE THAN THAT STATED IN OUR AGREEMENT WITHOUT PRIOR WRITTEN APPROVAL BY FCP.
PERSONS CONSTRUCTING THE SYSTEM ARE HELD RESPONSIBLE FOR ADHERING TO THE DRAWING DETAILS, AND MUST COMPLY TO WORKMANSHIP AND SAFETY REQUIREMENTS SET FORTH BY FCP AND INDUSTRY.
IT IS THE SOLE RESPONSIBILITY OF THE DEALER/RECTOR/END USER TO INVENTORY MATERIALS APPEARING AT THE JOB SITE AGAINST ITS PACKING LIST. IF A SHORTAGE EXISTS IT SHOULD BE NOTED ON THE PACKING LIST ALONG WITH NOTIFICATION TO FCP BEFORE CONSTRUCTION COMMENCES.
UPON NOTIFYING FCP OF THE MISSING COMPONENTS, FCP WILL MAKE EVERY EFFORT TO GET PARTS TO THE JOB SITE IN A TIMELY MANNER. FCP WILL NOT INCUR ANY COST DUE TO ANY DELAY CAUSED BY MISSING COMPONENTS.
IF A COMPONENT HAS BEEN FABRICATED IN ERROR, FCP MUST BE NOTIFIED IN WRITING TO THE DESIGN CONSULTANT AND FCP WILL BE FINANCIALLY RESPONSIBLE OR LIABLE FOR MATERIALS FABRICATED TO DATE. INFORMATION SUPPLIED BY THE CUSTOMER (AND/OR DEALER) AFTER A MUTUALLY AGREED UPON COST FOR CORRECTING ANY FABRICATION ERRORS. FCP WILL COMMENCE WITH FABRICATION.

DWG. HISTORY/REVISIONS	BY	DATE
ENGINEERING PKG. COMPLETED	B.F.	04.13.17
ADDED FOOTINGS TO DRAWING SHEET S1.1	B.F.	04.17.17
MOVED 2 COLUMNS & CHANGED T.O.D. TO 14'	B.F.	04.17.17
REVISED ENGINEERING PKG.	J.M.	07.11.17
REVISED ENGINEERING PKG.	J.M.	08.11.17

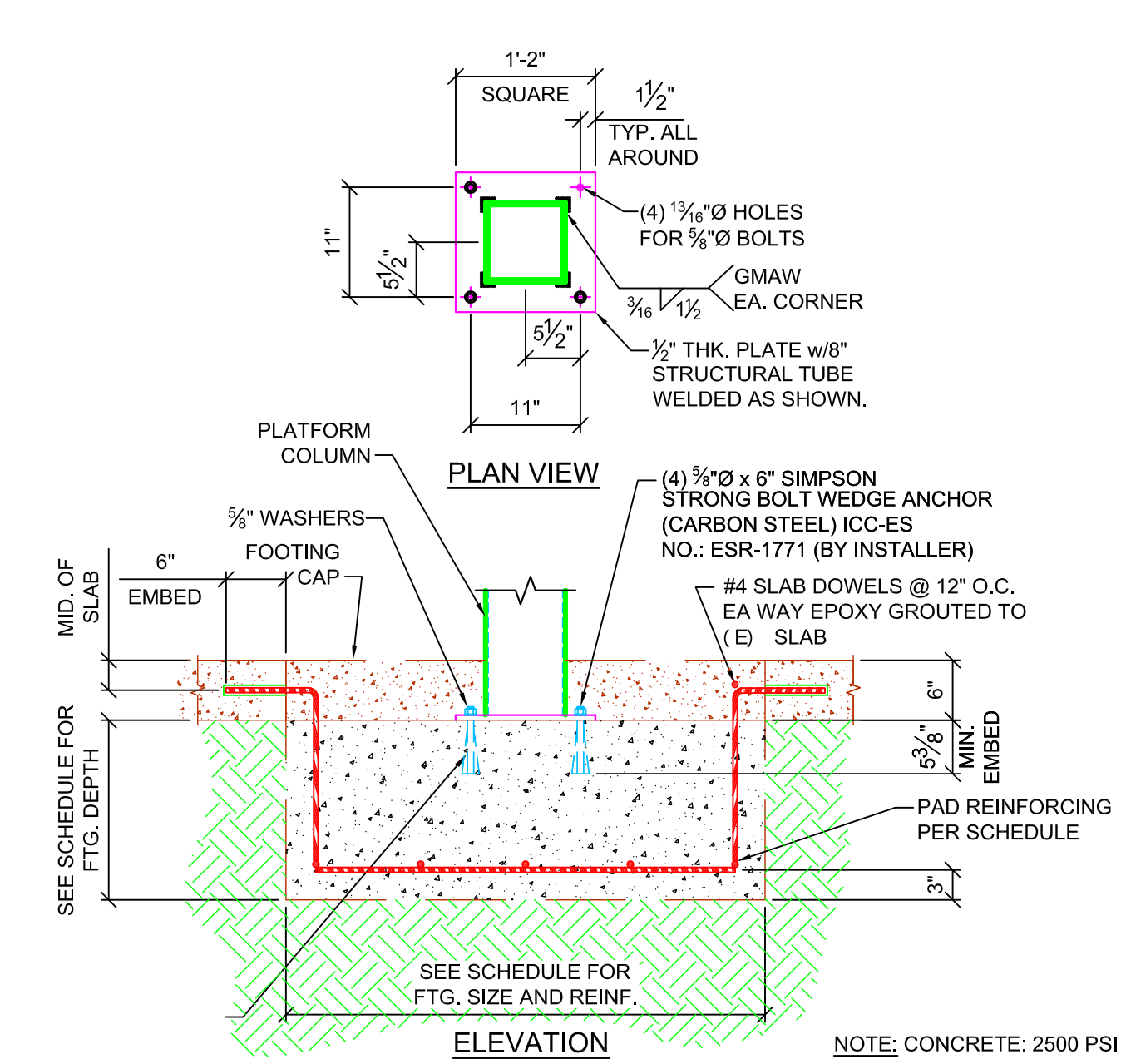
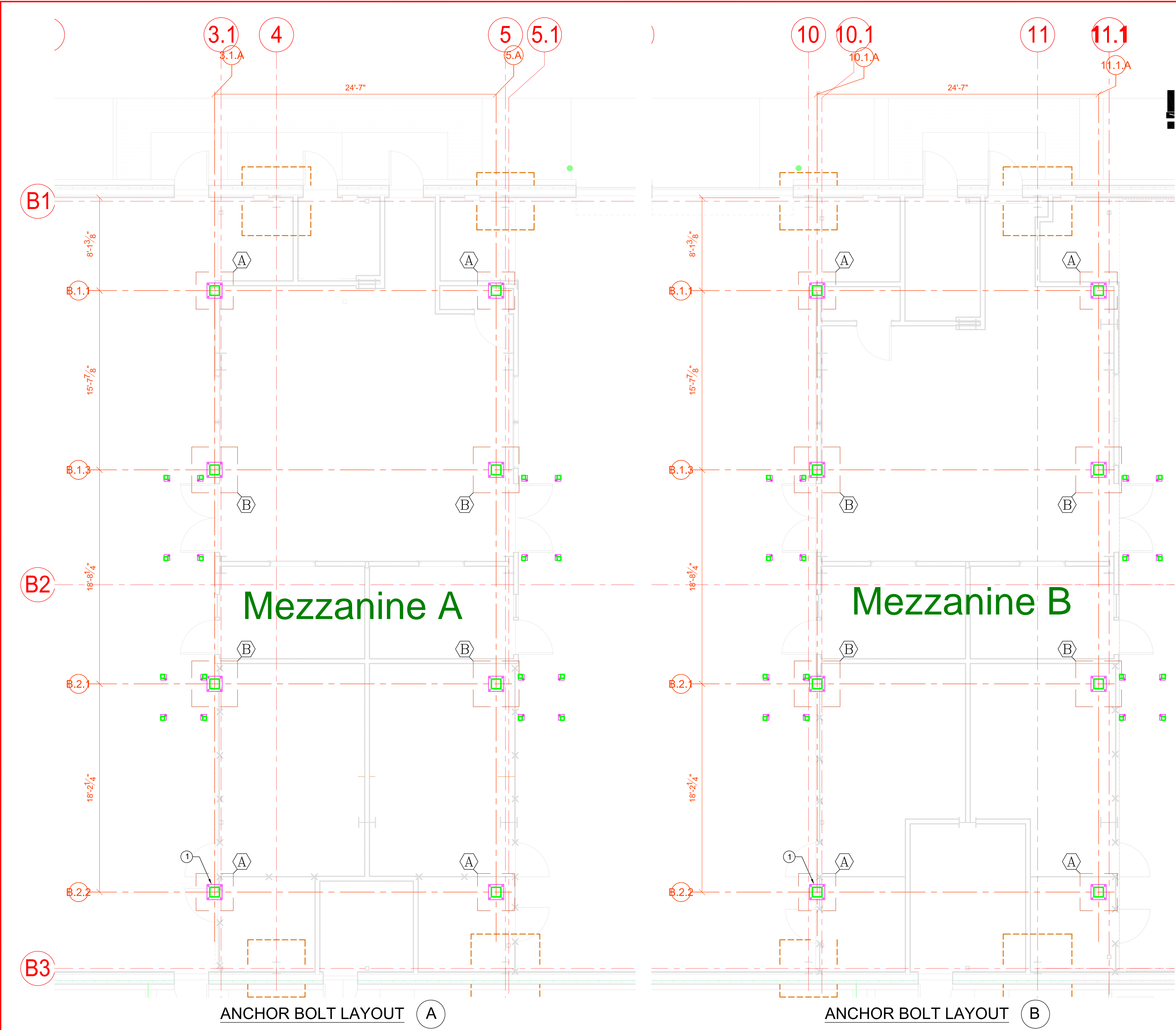
GENERAL NOTES

FILE NAME: Fairfield M17022_08.11.17_HP.dwg
SCALE: NONE
DRAWN BY: J. MARTINEZ
PROJECT: SB1022 FAIRFIELD
2500 CLAY BANK RD.
FAIRFIELD, CA 94533
HENSEL PHELPS
5600 WEST CENTURY BLVD.
LOS ANGELES, CA 90045



PERMIT/PC NUMBER:
...

SHEET NUMBER:
G1.1
SHEET 1 OF 10



① COLUMN @ BASE CONNECTION
SCALE: 3/4"=1'-0"

FOOTING SCHEDULE		
SYM.	QUAN.	SIZE
A	16	3'-3" x 3'-3" x 18" DEEP
B	16	4'-0" x 4'-0" x 18" DEEP

- FOOTING NOTES:
- ALL PADS SHALL BE REINFORCED WITH #4 @ 12" o.c. EACH WAY 3" CLEAR FROM THE BOTTOM OF THE PAD. TYPICAL UNLESS NOTED OTHERWISE
 - CONTRACTOR TO VERIFY ALL PRE-TREATMENT AND/OR RECOMPACTION OF THE SOIL HAS TAKEN PLCE PRIOR TO CASTING THE PAD FOOTINGS.

ANCHOR BOLT LAYOUT A

DATUM POINT IS THE STARTING POINT OF ALL LAYOUT AND ASSEMBLY. DATUM POINT LOCATION IS THE INTERSECTION OF GRIDS B.1.1 & 3.1.A
TO ENSURE SQUARENESS OF THE PROJECT USE THE 6, 8, 10 METHOD TO SQUARE THE GRID LINES PRIOR TO STARTING THE LAYOUT.

ANCHOR BOLT LAYOUT B

DATUM POINT IS THE STARTING POINT OF ALL LAYOUT AND ASSEMBLY. DATUM POINT LOCATION IS THE INTERSECTION OF GRIDS B.1.1 & 10.1.A
TO ENSURE SQUARENESS OF THE PROJECT USE THE 6, 8, 10 METHOD TO SQUARE THE GRID LINES PRIOR TO STARTING THE LAYOUT.



ATTENTION: DEALER/ENGINEER/USER:
THIS DRAWING, AND ALL INFORMATION HEREON, REMAINS THE SOLE PROPERTY OF FCP, INC. (FCP). ITS USE IS PROVIDED FOR CONTRACTING THE SYSTEM DESCRIBED IN THE FCP PROPOSAL AND IS NOT IN ANY WAY TO BE REPLICATED, ADAPTED, OR USED FOR ANY OTHER PURPOSE THAN THAT STATED IN OUR AGREEMENT WITHOUT PRIOR WRITTEN APPROVAL BY FCP.
BY/BEFORE CONSTRUCTING THE SYSTEM ARE HELD RESPONSIBLE FOR ADHERING TO THE DRAWING DETAILS, AND MUST COMPLY TO PROGRAMS AND SAFETY STANDARDS SET FORTH BY FCP AND INDUSTRY.
IT IS THE SOLE RESPONSIBILITY OF THE DEALER/ENGINEER/USER TO INVENTORY MATERIALS AND WORK AT THE JOB SITE IN A TIMELY MANNER. FCP WILL NOT INCUR ANY COST DUE TO ANY DELAY NOTIFIED TO FCP BEFORE CONSTRUCTION COMMENCES.
UPON NOTIFYING FCP OF THE MISSING COMPONENTS, FCP WILL MAKE EVERY EFFORT TO GET PARTS TO THE JOB SITE IN A TIMELY MANNER. FCP WILL NOT INCUR ANY COST DUE TO ANY DELAY NOTIFIED TO FCP BEFORE CONSTRUCTION COMMENCES.
IF A COMPONENT HAS BEEN FABRICATED IN ERROR, FCP MUST BE NOTIFIED IN ORDER TO DETERMINE CORRECTIVE ACTION. FCP WILL NOT BE HELD FINANCIALLY RESPONSIBLE OR LIABLE FOR MANUFACTURED DEFECTS OR FABRICATION ERRORS. INFORMATION SUPPLIED BY THE CUSTOMER AND/OR DEALER, AFTER AN INSTANTLY ADVISED UPON, DOES NOT CORRECT ANY FABRICATION ERRORS. FCP WILL COMMENCE WITH FABRICATION.

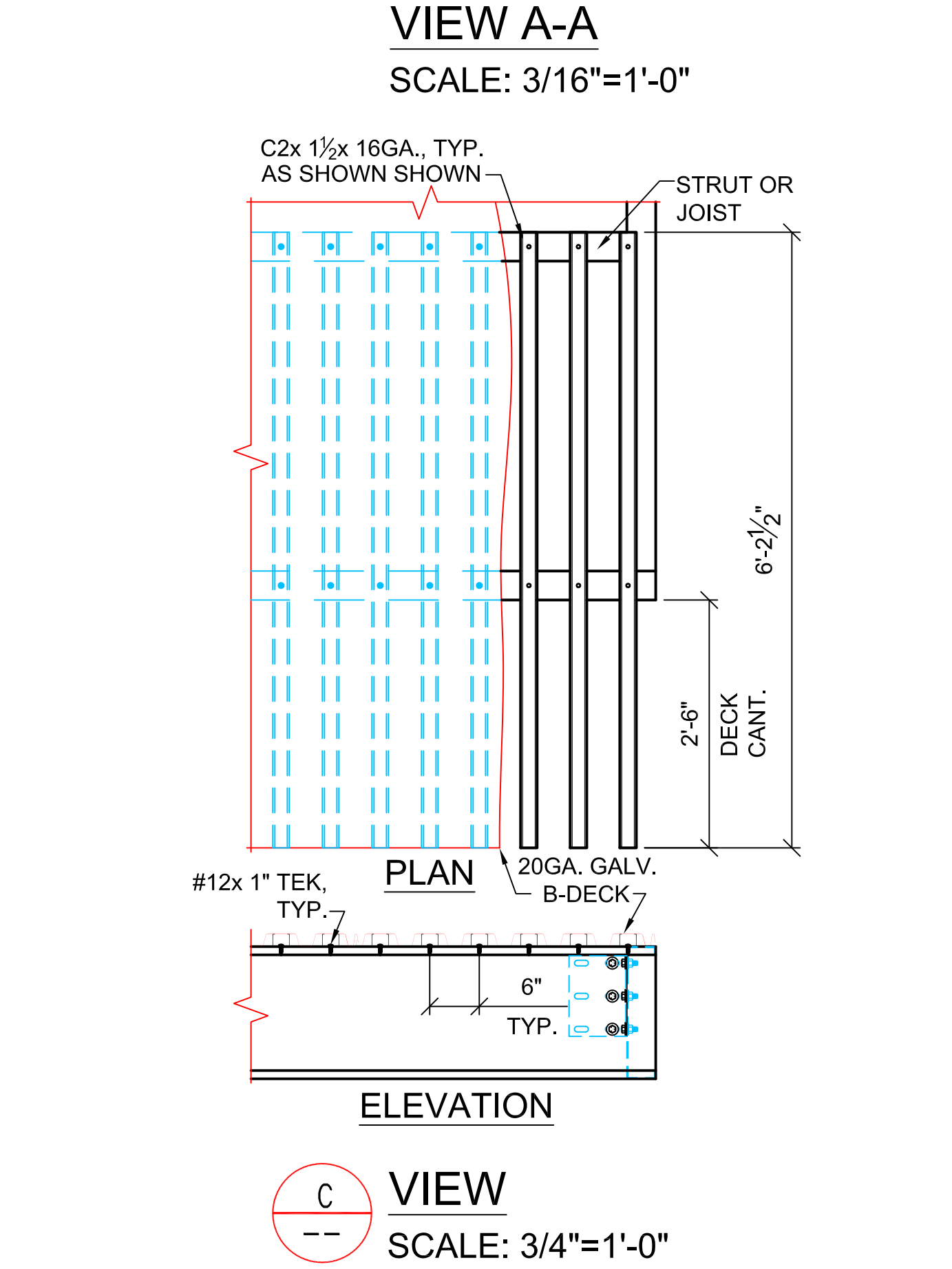
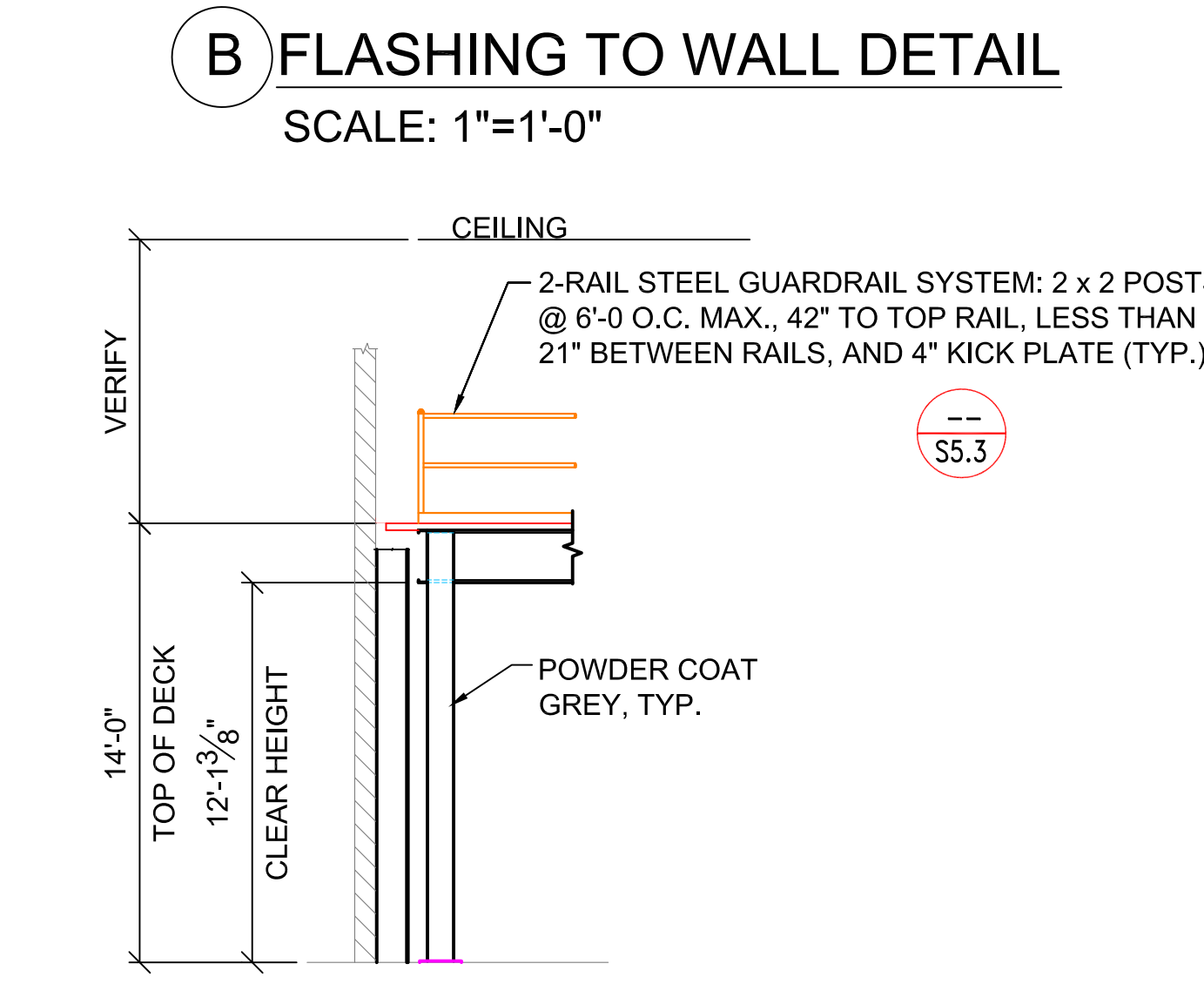
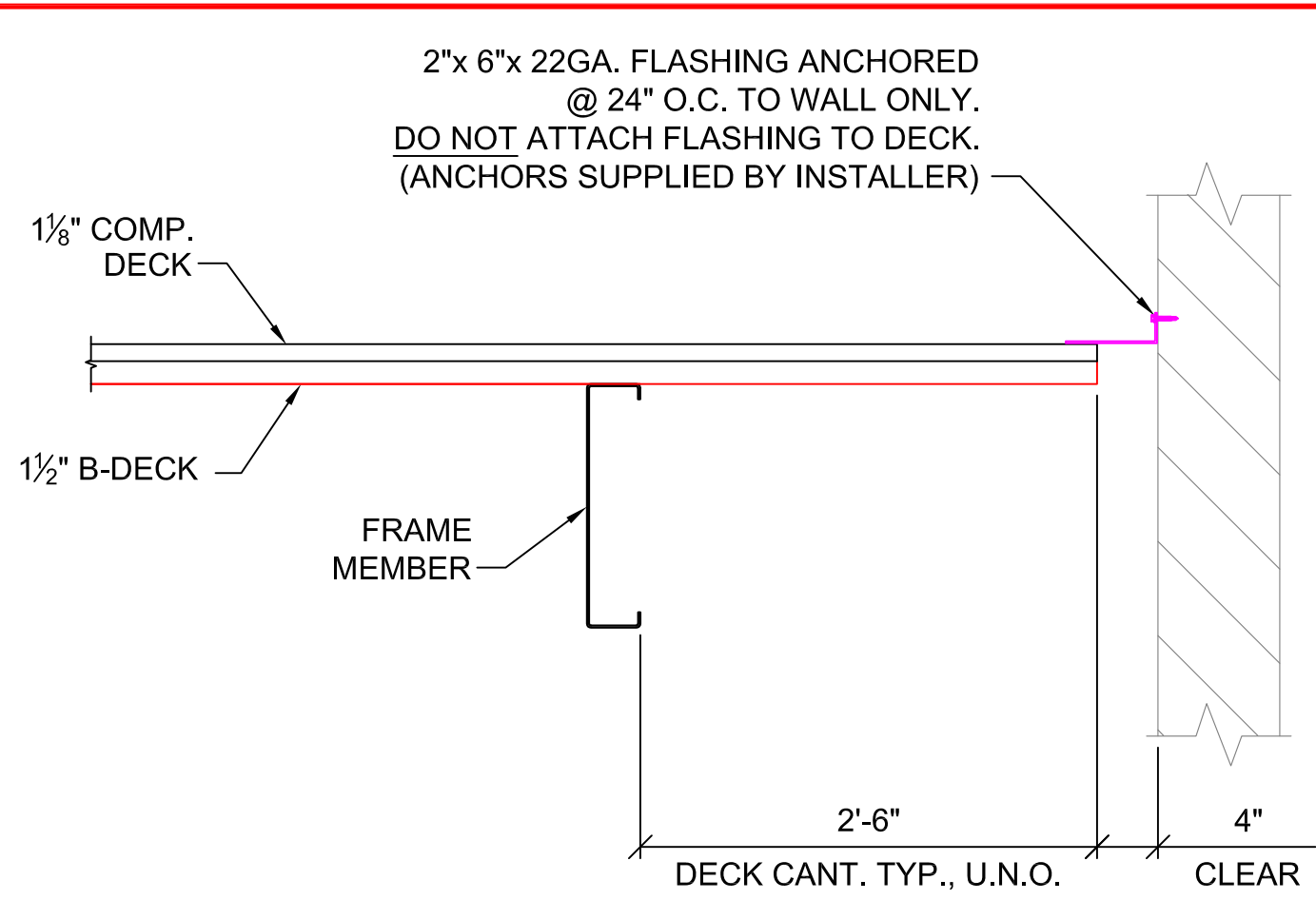
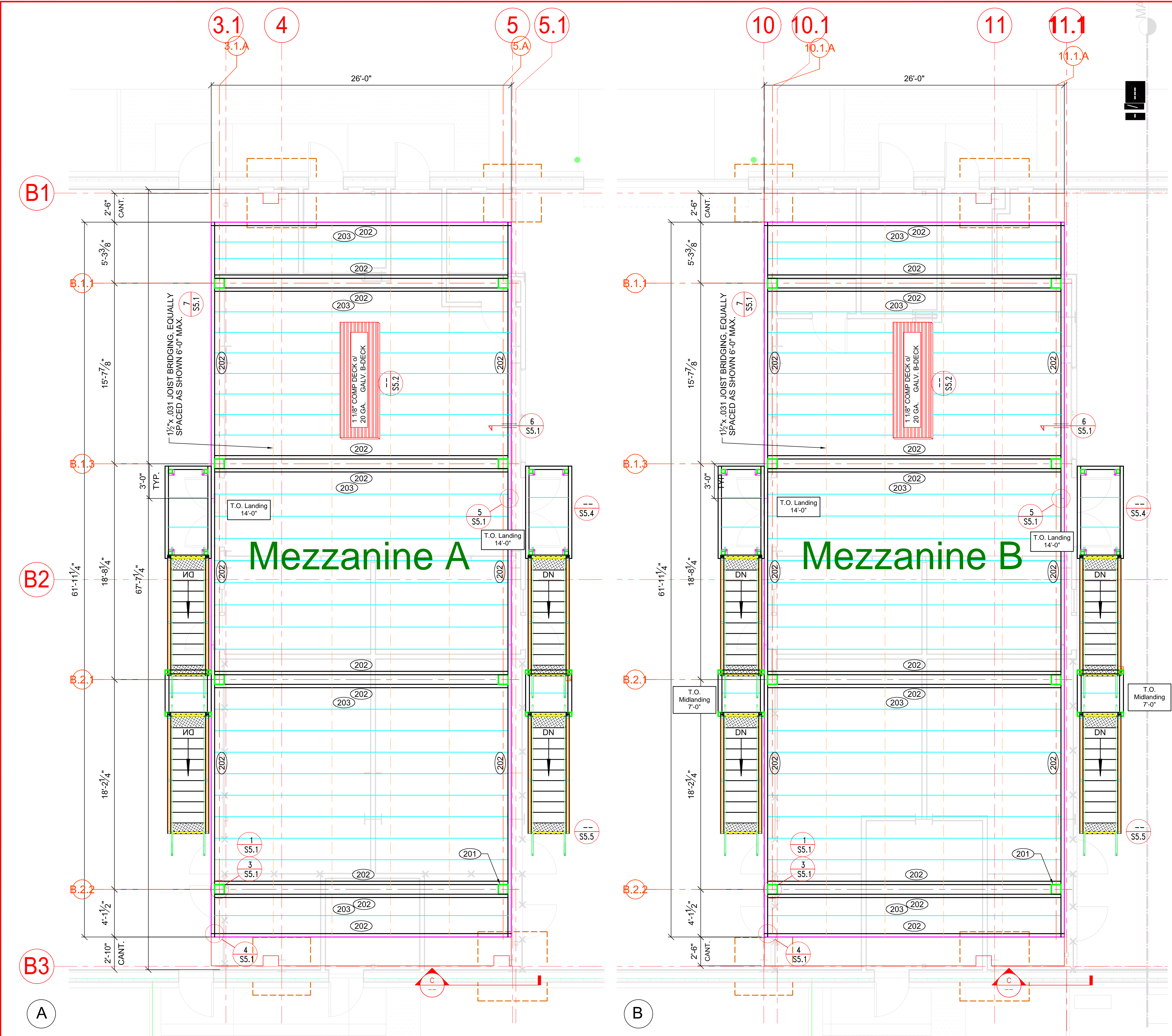
DWG. HISTORY/REVISIONS	BY	DATE
ENGINEERING PKG. COMPLETED	B.F.	04.13.17
ADDED FOOTINGS TO DRAWING SHEET S1.1	B.F.	04.17.17
MOVED 2 COLUMNS & CHANGED T.O.D. TO 14'	B.F.	04.17.17
REVISED ENGINEERING PKG.	J.M.	07.11.17
REVISED ENGINEERING PKG.	J.M.	08.11.17

FOUNDATION PLAN

FAIRFIELD M17023_08.11.17 HP.dwg
SCALE: 1/2" = 1'-0"
DRAWN BY: J. MARTINEZ
PRODUCT: SB1022 FAIRFIELD
2500 CLAY BANK RD.
FAIRFIELD, CA 94533
HENSEL PHELPS
5600 WEST CENTURY BLVD.
LOS ANGELES, CA 90045



SHEET NUMBER:
S1.1
SHEET 2 OF 10



DECK FRAMING PLAN

(201) HSS 10" x 10" x 5/16" COL. TYP.
(202) 20" x 3 1/2" x 10 GA. TYP.
(203) 16" x 3 1/2" x 12 GA. JOIST TYP.

ATTENTION: DEALER/ENGINEERING USER
THIS DRAWING, AND ALL INFORMATION HEREON, REMAINS THE SOLE PROPERTY OF FCP, INC. (FCP). ITS USE IS PROVIDED FOR CONSTRUCTION OF THE SYSTEM DESCRIBED IN THE FCP PROSPECTUS AND IS NOT IN ANY WAY TO BE REPLICATED, PARAPHRASED OR USED FOR ANY OTHER PURPOSE THAN THAT STATED IN OUR AGREEMENT WITHOUT PRIOR WRITTEN APPROVAL BY FCP.
BY USING CONSTRUCTION OF THE SYSTEM ARE HELD RESPONSIBLE FOR ADHERING TO THE DRAWING DETAILS, AND MUST COMPLY TO WORKMANSHIP AND SAFETY STANDARDS SET FORTH BY FCP AND INDUSTRY.
IT IS THE SOLE RESPONSIBILITY OF THE DEALER/ENGINEERING USER TO INVENTORY MATERIALS, AND AT THE JOB SITE, AGAINST ITS PROVISIONS, AND IN THE EVENT OF ANY DELAY, NOTED ON THE PACKING LIST, IT SHALL BE THE RESPONSIBILITY OF THE DEALER/ENGINEERING USER TO NOTIFY FCP BEFORE CONSTRUCTION COMMENCES.
UPON NOTICING FCP OF THE MISSING COMPONENTS, FCP WILL MAKE EVERY EFFORT TO GET PARTS TO THE JOB SITE BY A TIMELY MANNER. FCP WILL NOT INCUR ANY COST DUE TO ANY DELAY CAUSED BY MISSING MATERIALS.
IF A COMPONENT HAS BEEN FABRICATED BY FCP, FCP MUST BE NOTIFIED IN ORDER TO DETERMINE CORRECTING ACTION. FCP WILL NOT BE HELD FINANCIALLY RESPONSIBLE OR LIABLE FOR MATERIALS FABRICATED PRIOR TO THE DATE OF NOTIFICATION SUPPLIED BY THE CUSTOMER. ANY OTHER DEALER, AFTER AN AFFIRMATION UPON ORDER FOR CORRECTING ANY FABRICATION ERRORS, FCP WILL COMMENCE WITH FABRICATION.

DWG. HISTORY/REVISIONS	BY	DATE
ENGINEERING PKG. COMPLETED	B.F.	04.13.17
ADDED FOOTINGS TO DRAWING SHEET S1.1	B.F.	04.17.17
MOVED 2 COLUMNS & CHANGED T.O.D. TO 14'	B.F.	04.17.17
REVISED ENGINEERING PKG.	J.M.	07.11.17
REVISED ENGINEERING PKG.	J.M.	08.11.17

DECK FRAMING PLAN

PROJECT: SB1022 FAIRFIELD
5600 WEST CENTURY BLVD.
LOS ANGELES, CA 90045

SCALE: 3/4" = 1'-0"

DATE: 8.14.17

DESIGNED BY: M. MEJIA

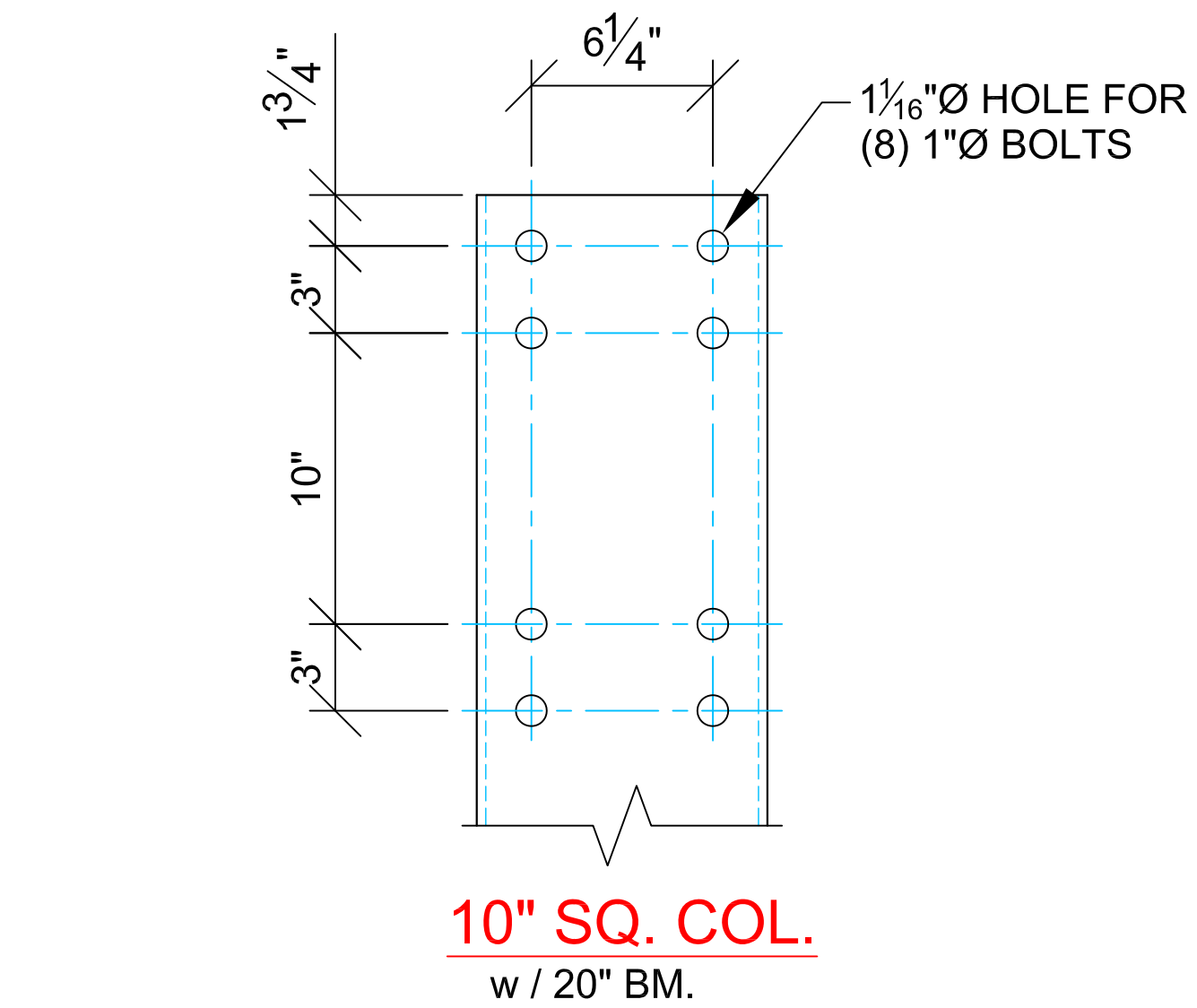
CHECK BY: M. MEJIA

FCP, Inc.
Freospace Mezzanines
23100 BAXTER ROAD
WILDOMAR, CA 92595
(800) 807-2276
(805) 684-3188 FAX
SALES@FCPMEZZANINE.COM

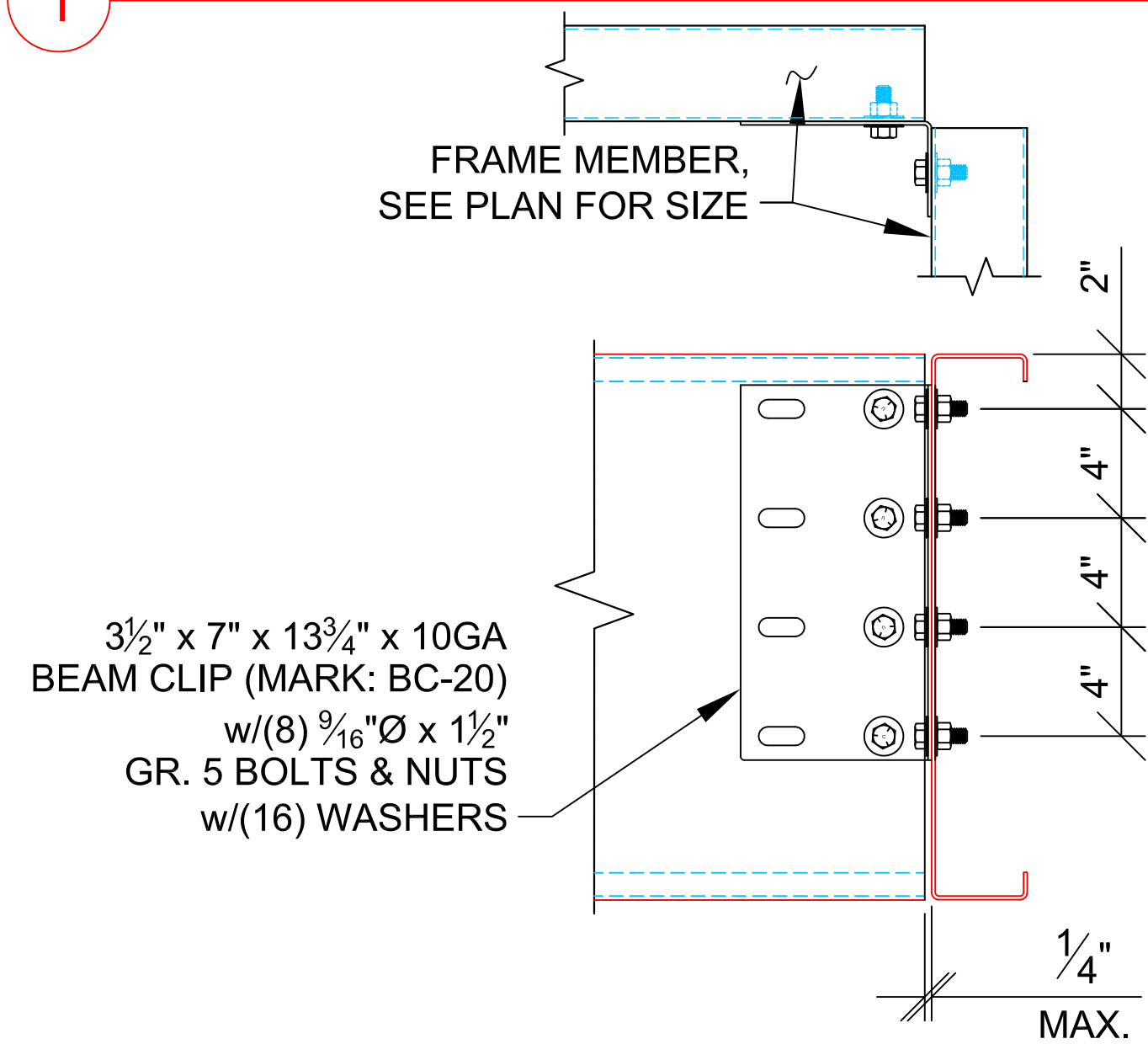
SHEET NUMBER:

S1.2

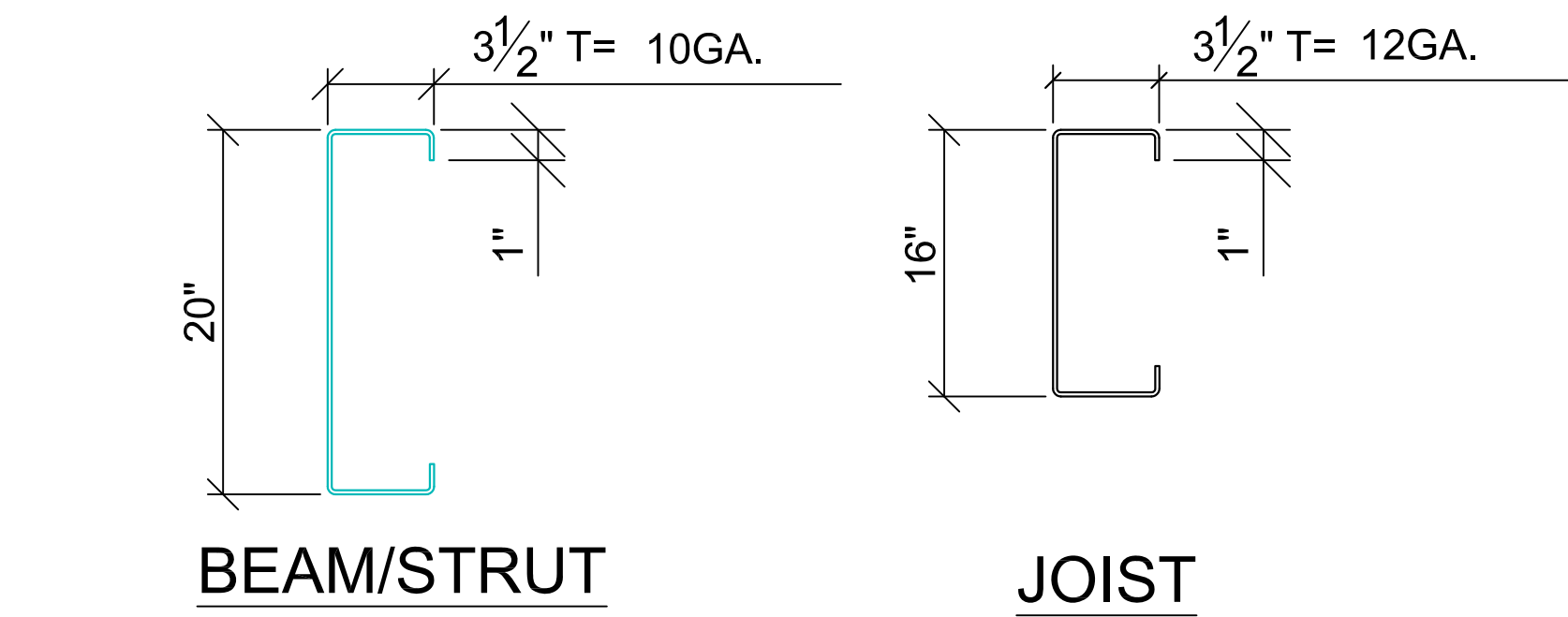
SHEET 4 OF 10



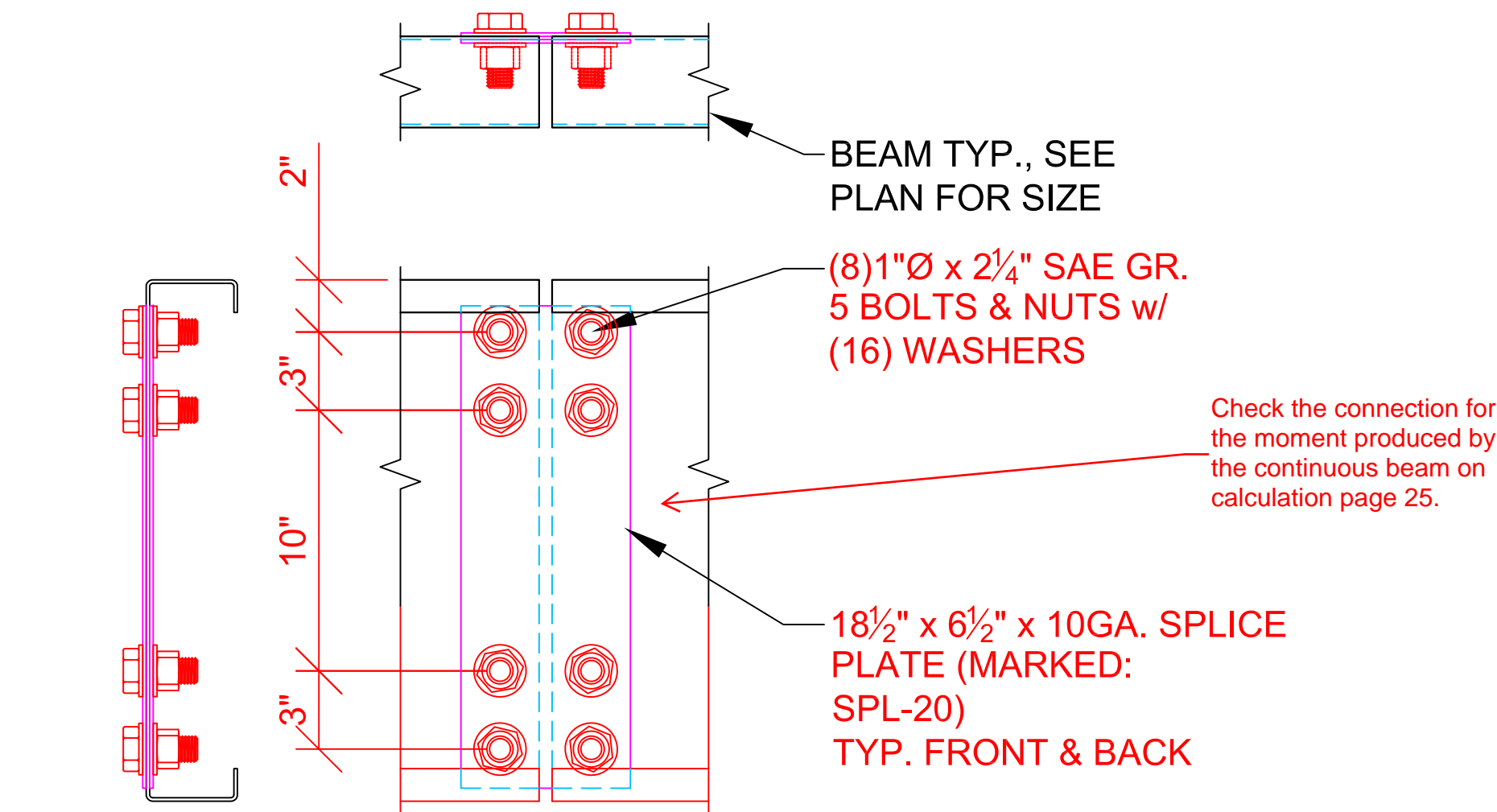
1 BOLT PATTERN DETAIL



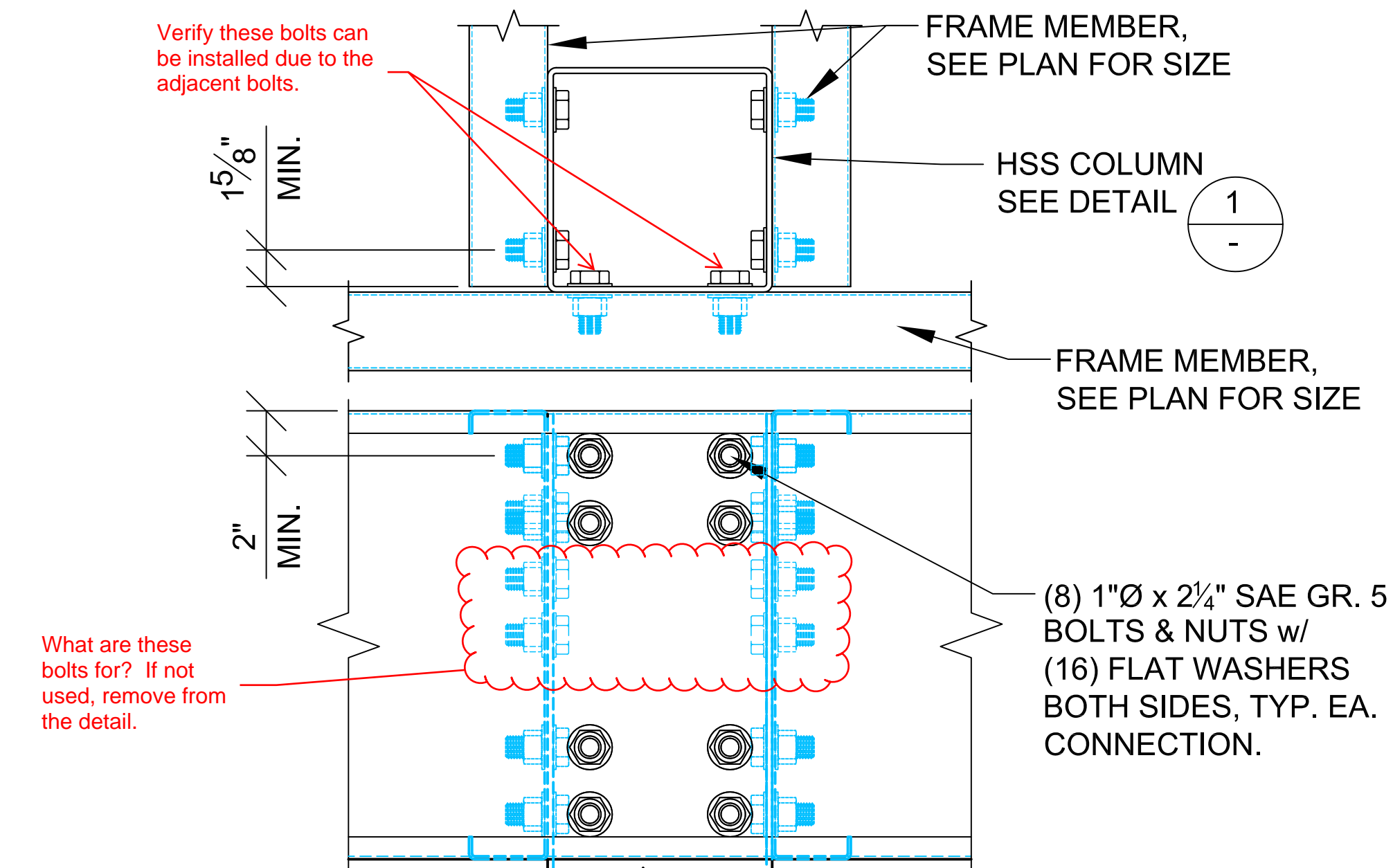
4 BEAM CLIP @ CORNER CONNECTION



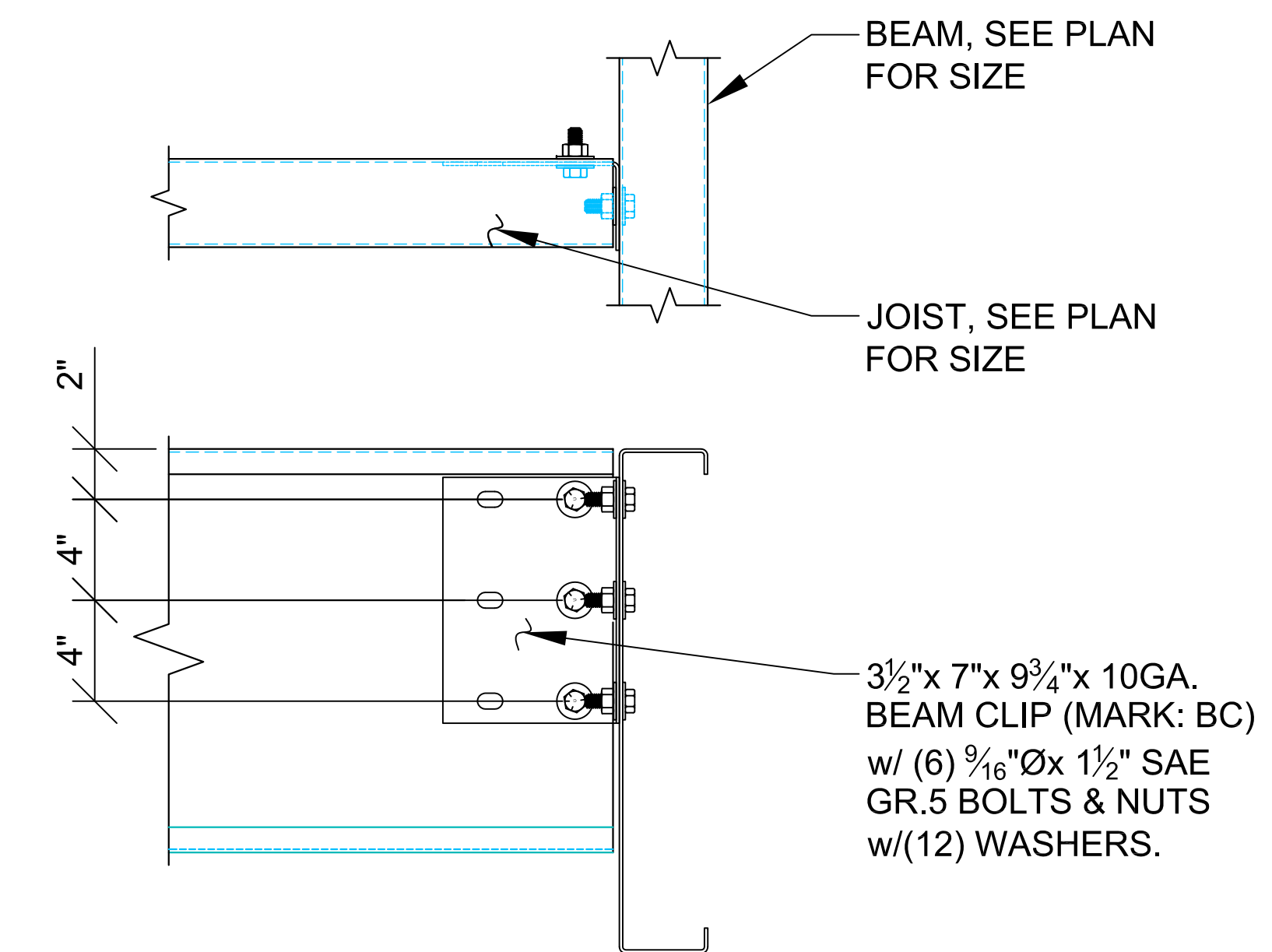
2 TYPICAL STRUCTURAL MEMBERS



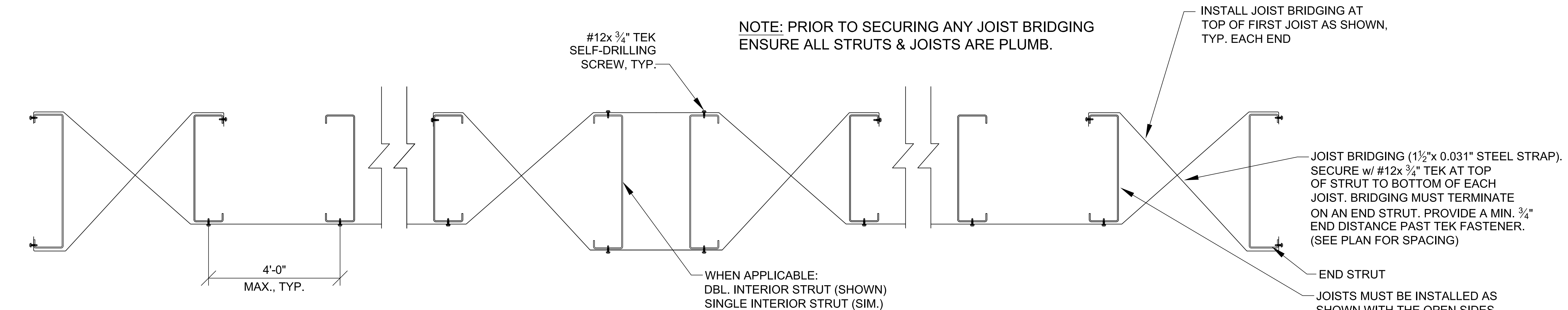
5 FIELD SPLICE PLATE CONNECTION



3 COL. CONNECTION @ PERIMETER



6 JOIST TO SINGLE BEAM CONNECTION



7 JOIST BRIDGING DETAIL



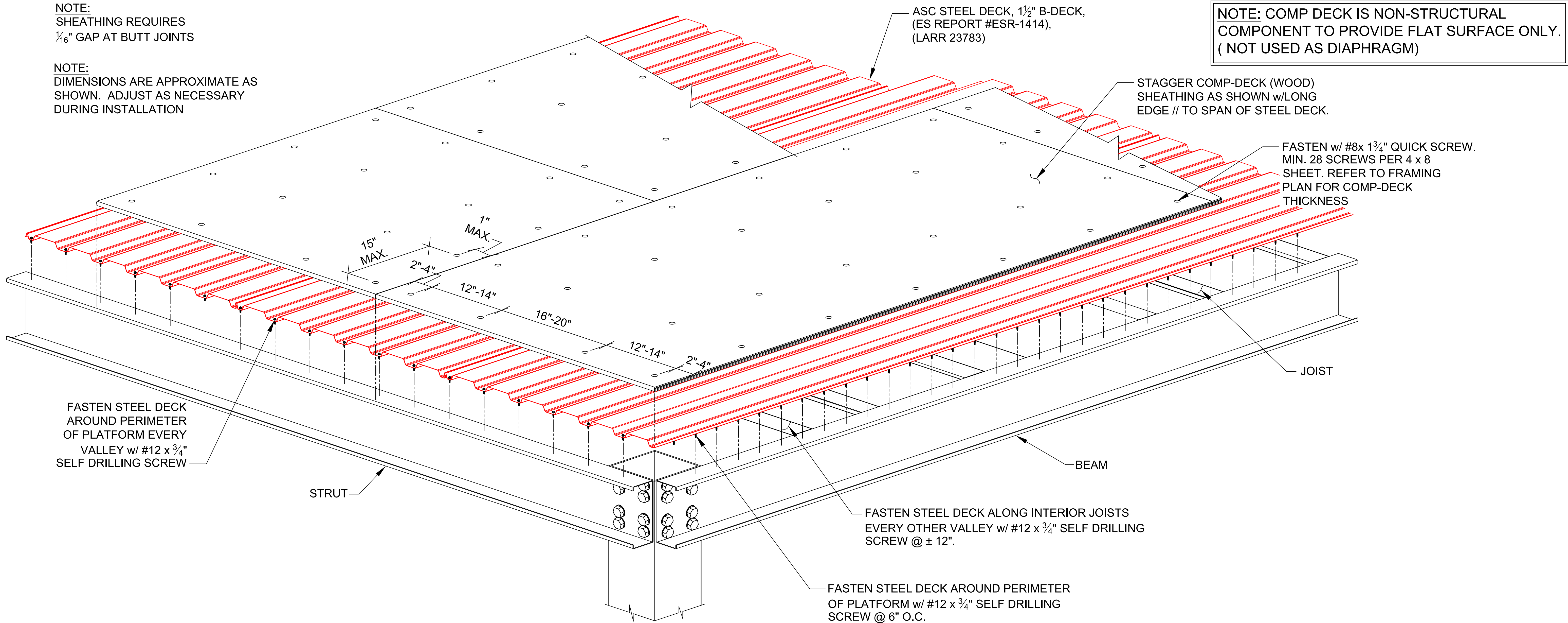
ATTENTION: DEALER/RECTOR/END USER:
THIS DRAWING AND ALL INFORMATION HEREON, REMAINS THE SOLE PROPERTY OF FCP INC. FCP'S ITS USE IS PROVIDED FOR CONSTRUCTING THE SYSTEM DESCRIBED IN THE FCP PROPOSAL AND IS NOT IN ANY WAY TO BE REPLICATED, FABRICATED, OR USED FOR ANY OTHER PURPOSE THAN THAT STATED IN OUR AGREEMENT WITHOUT PRIOR WRITTEN APPROVAL BY FCP.
PERSONS CONSTRUCTING THE SYSTEM ARE HELD RESPONSIBLE FOR ADHERING TO THE DRAWING DETAILS, AND MUST COMPLY TO WORKMANSHIP AND SAFETY STANDARDS SET FORTH BY FCP AND INDUSTRY.
IT IS THE SOLE RESPONSIBILITY OF THE DEALER/RECTOR/END USER TO INQUIRE MATERIAL AVAILABILITY AT THE JOB SITE AGAINST ITS PROPOSAL. IF A SHORTAGE EXISTS, IT SHOULD BE NOTED ON THE DRAWING AND ALLOW WITH NOTIFICATION TO FCP BEFORE CONSTRUCTION COMMENCES.
UPON NOTIFYING FCP OF THE MISSING COMPONENTS, FCP WILL MAKE EVERY EFFORT TO GET PARTS TO THE JOB SITE VIA TRUCK. FCP WILL NOT INCUR ANY COST DUE TO ANY DELAY CAUSED BY MISSING COMPONENTS.
IF A COMPONENT HAS BEEN FABRICATED IN ERROR, FCP MUST BE NOTIFIED IN ORDER TO DETERMINE CORRECTIVE ACTION. FCP WILL NOT BE HELD FINANCIALLY RESPONSIBLE FOR DAMAGES OR MISTAKENLY FABRICATED PARTS DUE TO MISINTERPRETATION SUPPLIED BY THE CUSTOMER. AND/OR DEALER, AFTER A MUTUALLY AGREED UPON COST FOR CORRECTING ANY FABRICATION ERRORS. FCP WILL COMMENCE WITH FABRICATION.

DWG. HISTORY/REVISIONS		DATE
BY	B.F.	04.13.17
ENGINEERING PKG. COMPLETED		
ADDED FOOTINGS TO DRAWING SHEET S1.1	B.F.	04.17.17
MOVED 2 COLUMNS & CHANGED T.O.D. TO 14"	B.F.	04.17.17
REVISED ENGINEERING PKG.	J.M.	07.11.17
REVISED ENGINEERING PKG.	J.M.	08.11.17

STANDARD DETAILS		DATE
REVISIONS	FAIRFIELD M17023_08.11.17_JHP.dwg	8.14.17
SCALE	N.T.S.	
DRAWN BY	B. FROMAN	
PROJECT	SB1022 FAIRFIELD 2500 CLAY BANK RD. FAIRFIELD, CA 94533	



SHEET NUMBER:
S5.1
SHEET 6 OF 10



DECKING CONNECTION DETAIL



ATTENTION: DEALER/ENGINEERING USER
THIS DRAWING AND ALL INFORMATION HEREON, REMAINS THE SOLE PROPERTY OF FCP INC. FCP'S USE IS PROVIDED FOR CONSTRUCTING THE SYSTEM DESCRIBED IN THE FCP PROPOSAL AND IS NOT IN ANY WAY TO BE REPLICATED, FABRICATED, OR USED FOR ANY OTHER PURPOSE THAN THAT STATED IN OUR AGREEMENT WITHOUT PRIOR WRITTEN APPROVAL BY FCP.
PERSONS CONSTRUCTING THE SYSTEM ARE HELD RESPONSIBLE FOR ADHERING TO THE DRAWING DETAILS, AND MUST COMPLY TO WORKMANSHIP AND SAFETY STANDARDS SET FORTH BY FCP AND INDUSTRY.
IT IS THE SOLE RESPONSIBILITY OF THE DEALER/ENGINEERING USER TO INQUIRE OF MATERIAL SUPPLIERS AT THE JOB SITE AGAINST ITS PACKAGING LIST. IF A SHORTAGE EXISTS IT SHOULD BE NOTED ON THE PACKING LIST ALONG WITH NOTIFICATION TO FCP BEFORE CONSTRUCTION COMMENCES.
UPON NOTIFYING FCP OF THE MISSING COMPONENT(S), FCP WILL MAKE EVERY EFFORT TO GET PARTS TO THE JOB SITE VIA TRUCK. FCP WILL NOT INCUR ANY COST DUE TO ANY DELAY CAUSED BY MISSING COMPONENTS.
IF A COMPONENT HAS BEEN FABRICATED IN ERROR, FCP MUST BE NOTIFIED IN ORDER TO DETERMINE CORRECTIVE ACTION. FCP WILL NOT BE HELD FINANCIALLY RESPONSIBLE FOR DAMAGES FOR MISTAKENLY FABRICATED PARTS DUE TO MISINTERPRETATION SUPPLIED BY THE CUSTOMER. AND/OR DEALER, AFTER A MUTUALLY AGREED UPON COST FOR CORRECTING ANY FABRICATION ERRORS, FCP WILL COMMENCE WITH FABRICATION.

DECKING CONNECTION DETAILS			
FILE/DWG#	FAIRFIELD MT7023_08-11-17_4HP.dwg		
SCALE:	N.T.S.	PLOT DATE: 8.14.17	DRAWN BY: B.FROMAN CHK. BY:
PROJECT: HENSEL PHELPS 5600 WEST CENTURY BLVD. LOS ANGELES, CA 90045		PROJECT: SB1022 FAIRFIELD 5600 CLAY BANK RD. FAIRFIELD, CA 94533	
		DWG. HISTORY/REVISIONS	BY DATE
		ENGINEERING PKG. COMPLETED	B.F. 04.13.17
		ADDED FOOTINGS TO DRAWING SHEET S1.1	B.F. 04.17.17
		MOVED 2 COLUMNS & CHANGED T.O.D. TO 14"	B.F. 04.17.17
		REVISED ENGINEERING PKG.	J.M. 07.11.17
		REVISED ENGINEERING PKG.	J.M. 08.11.17



SHEET NUMBER:
S5.2
SHEET 7 OF 10



ATTENTION DEALER/RECTOR/END USER:
THIS DRAWING AND ALL INFORMATION HEREON, REMAINS THE SOLE PROPERTY OF FCP INC. FCP'S USE IS PROVIDED FOR CONSTRUCTING THE SYSTEM DESCRIBED IN THE FCP PROPOSAL AND IS NOT IN ANY WAY TO BE REPLICATED, FABRICATED, OR USED FOR ANY OTHER PURPOSE THAN THAT STATED IN OUR AGREEMENT WITHOUT PRIOR WRITTEN APPROVAL BY FCP.
PERSONS CONSTRUCTING THE SYSTEM ARE HELD RESPONSIBLE FOR ADHERING TO THE DRAWING DETAILS, AND MUST COMPLY TO WORKMANSHIP AND SAFETY STANDARDS SET FORTH BY FCP AND INDUSTRY.
IT IS THE SOLE RESPONSIBILITY OF THE DEALER/RECTOR/END USER TO INQUIRE MATERIAL ARRIVING AT THE JOB SITE AGAINST ITS PROHIBITION. IF A SUBSTANTIAL ERROR IS IDENTIFIED, NOTED ON THE DRAWING SET, FCP SHALL BE NOTIFIED OF THE PROBLEM AND FCP SHALL BE NOTIFIED OF THE PROBLEM AND FCP SHALL BE NOTIFIED OF THE PROBLEM AND FCP SHALL BE NOTIFIED OF THE PROBLEM.
UPON NOTIFYING FCP OF THE MISSING COMPONENT(S), FCP WILL MAKE EVERY EFFORT TO GET PARTS TO THE JOB SITE VIA TRUCK. FCP WILL NOT INCUR ANY COST DUE TO ANY DELAY CAUSED BY MISSING COMPONENTS.
IF A COMPONENT HAS BEEN FABRICATED IN ERROR, FCP MUST BE NOTIFIED IN ORDER TO DETERMINE CORRECTIVE ACTION. FCP WILL NOT BE HELD FINANCIALLY RESPONSIBLE OR LIABLE FOR METASTABLY FABRICATED PARTS DUE TO MISIDENTIFICATION SUPPLIED BY THE CUSTOMER. AND/OR DEALER, AFTER A MUTUALLY AGREED UPON COST FOR CORRECTING ANY FABRICATION ERRORS, FCP WILL COMMENCE WITH FABRICATION.

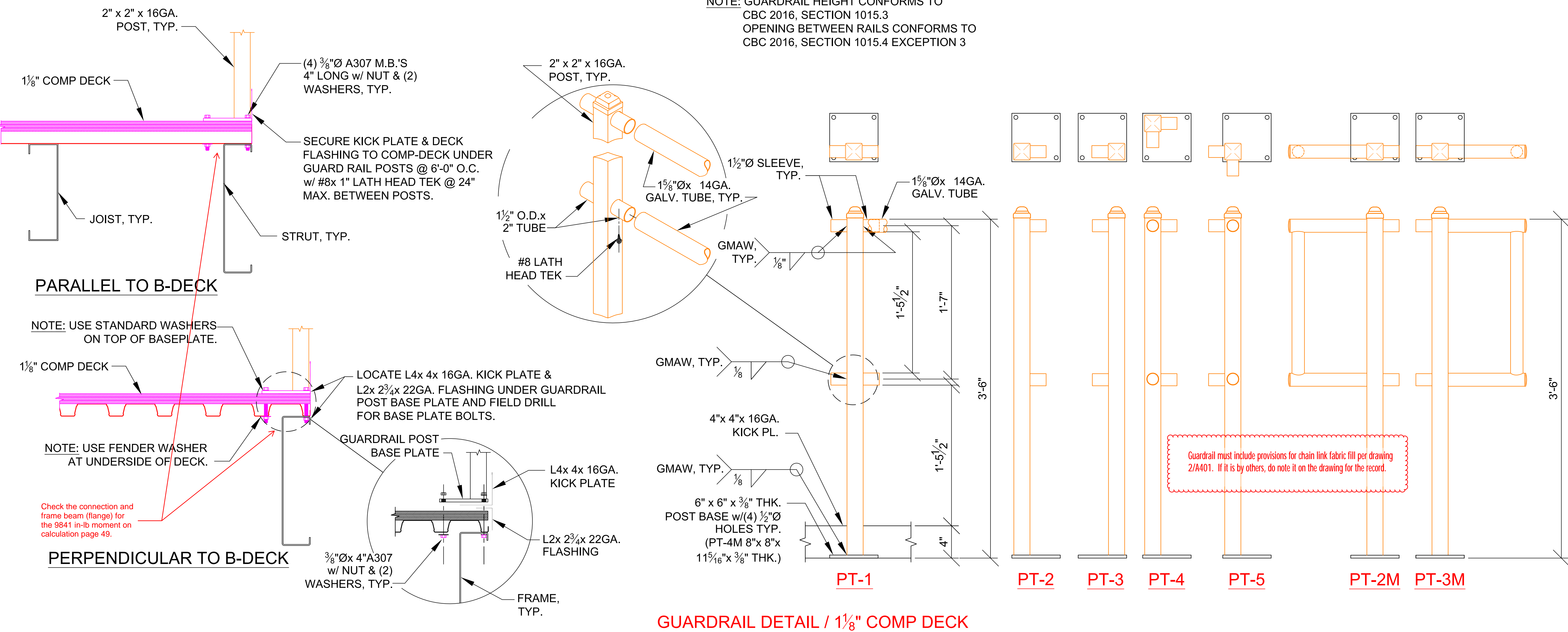
DWG. HISTORY/REVISIONS		DATE	BY
ENGINEERING PKG. COMPLETED	ENGINEERING PKG. COMPLETED	04.13.17	B.F.
	ADDED FOOTINGS TO DRAWING SHEET S1.1	04.17.17	B.F.
	MOVED 2 COLUMNS & CHANGED T.O.D. TO 14'	04.17.17	B.F.
	REVISED ENGINEERING PKG.	07.11.17	J.M.
	REVISED ENGINEERING PKG.	08.11.17	J.M.
GUARDRAIL CONNECTION DETAILS		DATE	BY
REVISIONS	FAIRFIELD M17023_08.11.17_JP.dwg	8.14.17	J. MARTINEZ
SCALE	N.T.S.		
DEALER	HENSEL PHELPS 5600 WEST CENTURY BLVD. LOS ANGELES, CA 90045		
PROJECT	SB1022 FAIRFIELD 2500 CLAY BANK RD. FAIRFIELD, CA 94533		

FCP, Inc.
FREESPACE MEZZANINES
23100 BAXTER ROAD
WILDOMAR, CA 92595
(800) 807-2276
(805) 684-3188 FAX
SALES@FCPMEZZANINE.COM

SHEET NUMBER:
S5.3
SHEET 8 OF 10

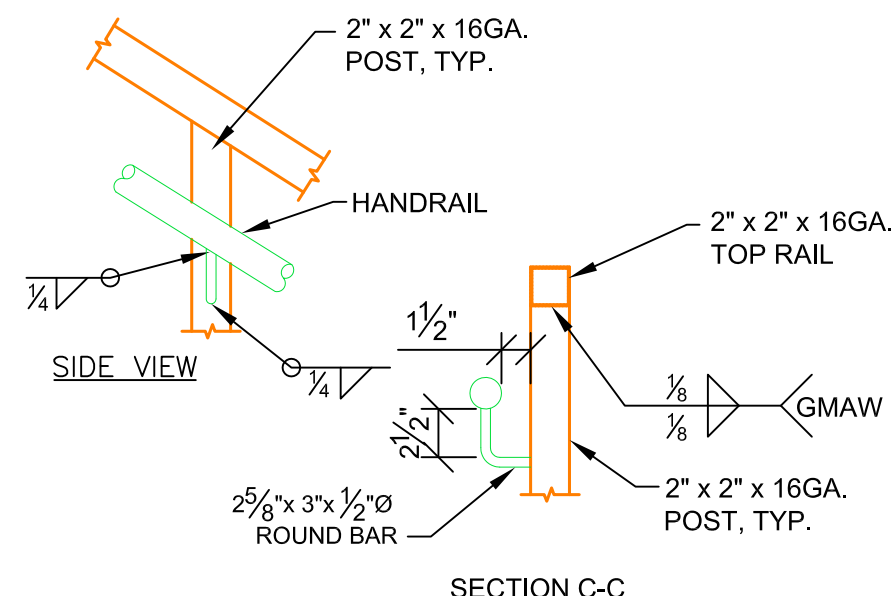
FILE LOCATION: J:\Projects 2017\Div 2\Fairfield M17023\CAD\

NOTE: GUARDRAIL HEIGHT CONFORMS TO
CBC 2016, SECTION 1015.3
OPENING BETWEEN RAILS CONFORMS TO
CBC 2016, SECTION 1015.4 EXCEPTION 3

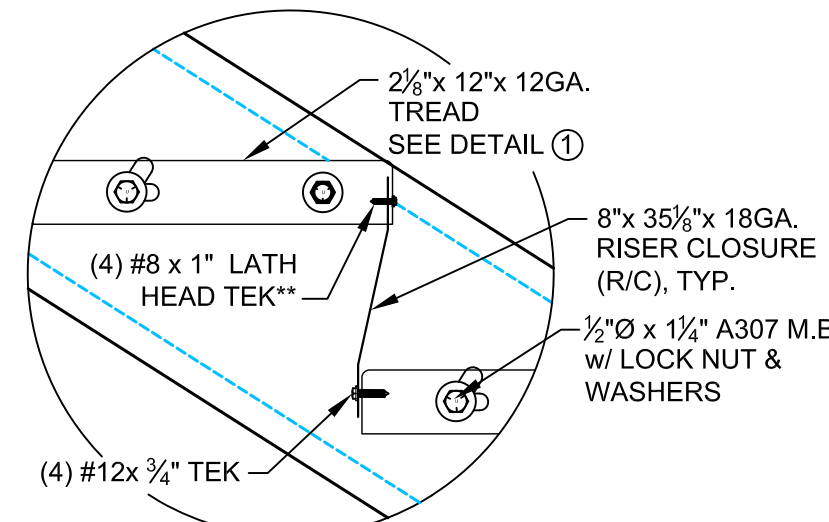


GUARDRAIL DETAIL / 1/8" COMP DECK

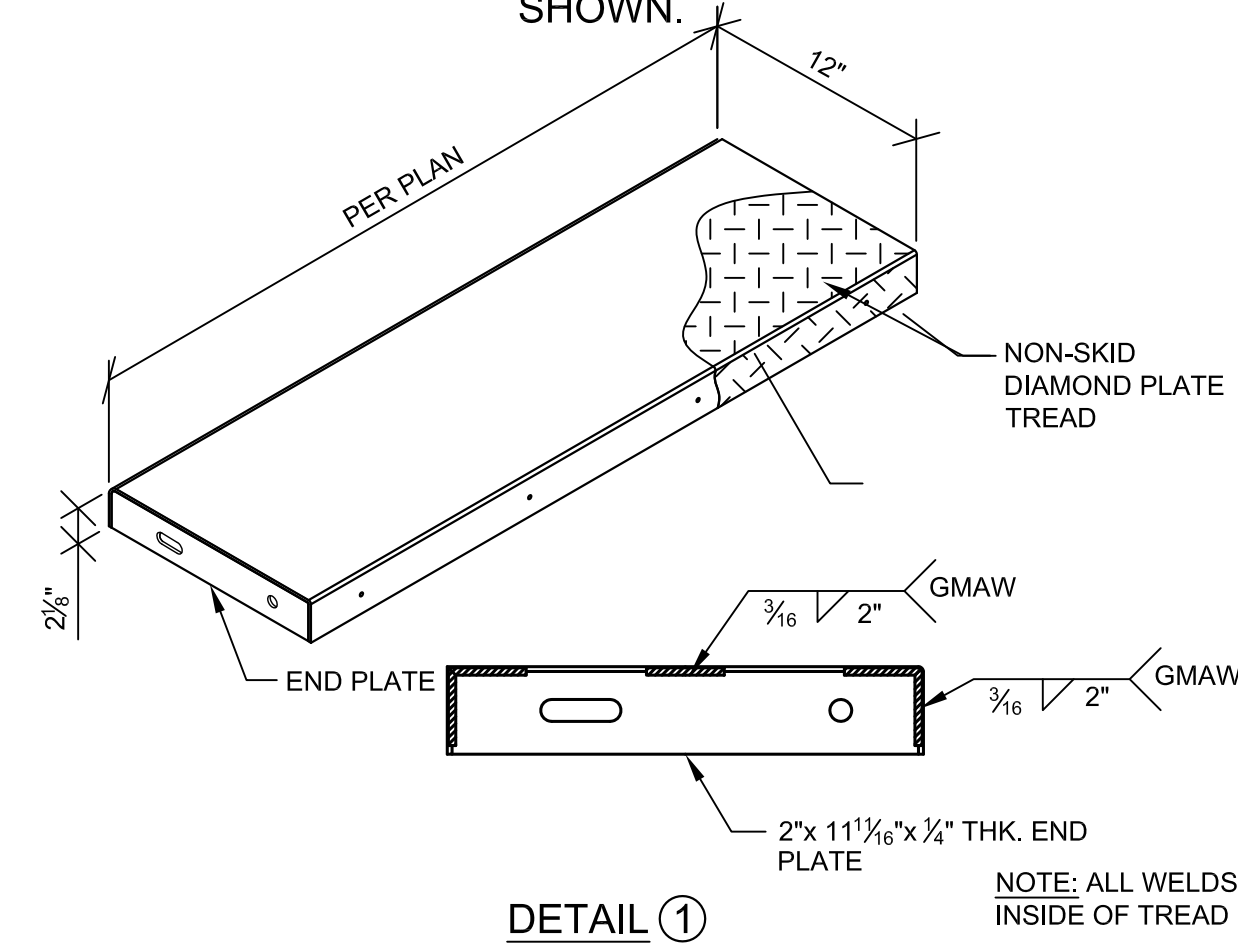
FILE LOCATION:



HANDRAIL TO POST DETAIL

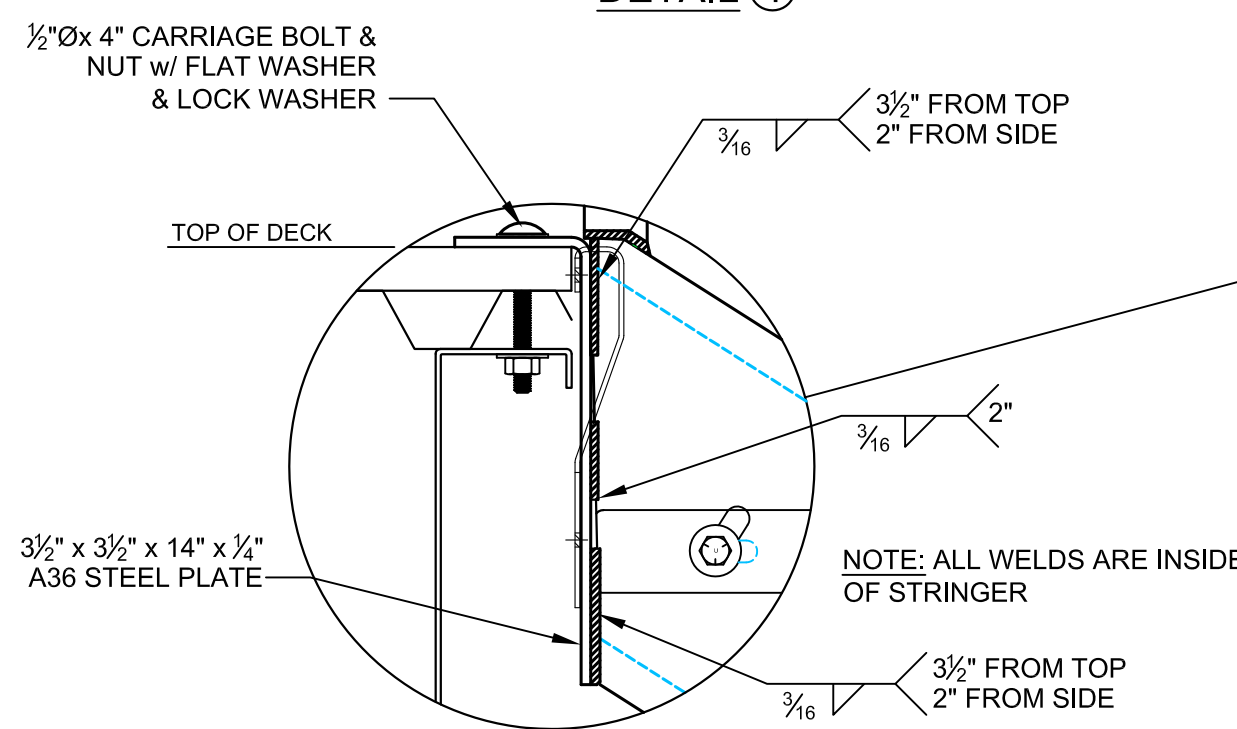


VIEW A-A **NOTE: FASTEN THE TOP OF R/C INSIDE THE FRONT LIP OF THE UPPER TREAD THRU THE (4) PILOT HOLES & OUTSIDE OF THE BACK LIP OF THE LOWER TREAD AS SHOWN.

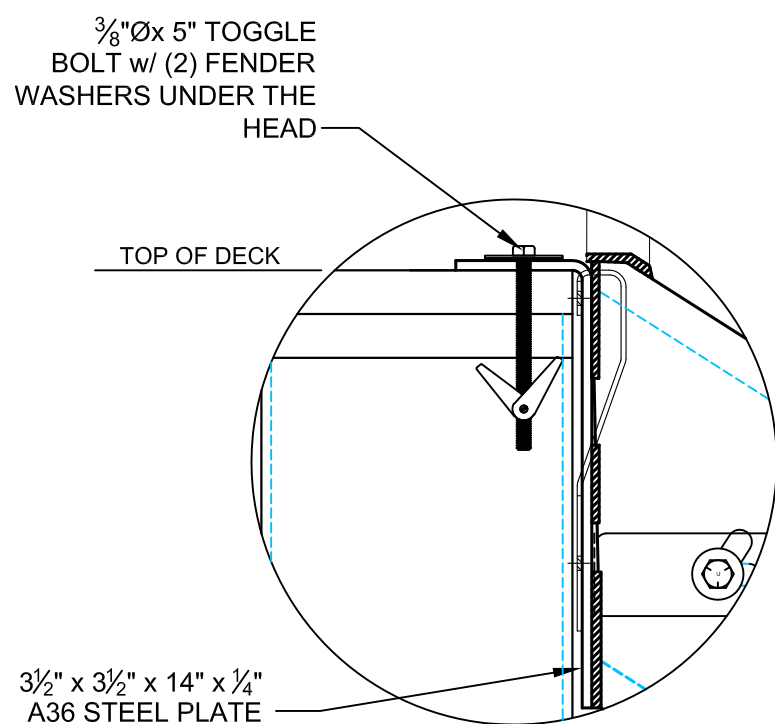


DETAIL 1

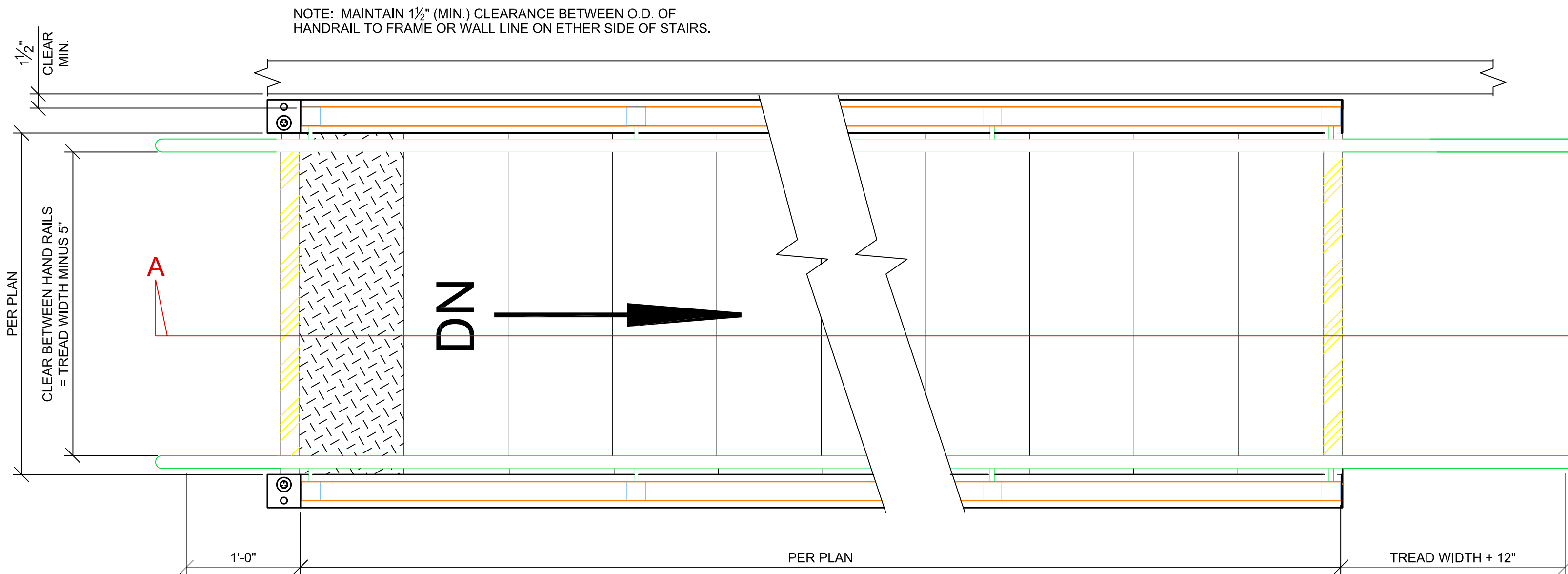
NOTE: ALL WELDS ARE INSIDE OF TREAD



TOP CONNECTION @ FRAMING



STAIR TOP CONNECTION OVER COLUMN

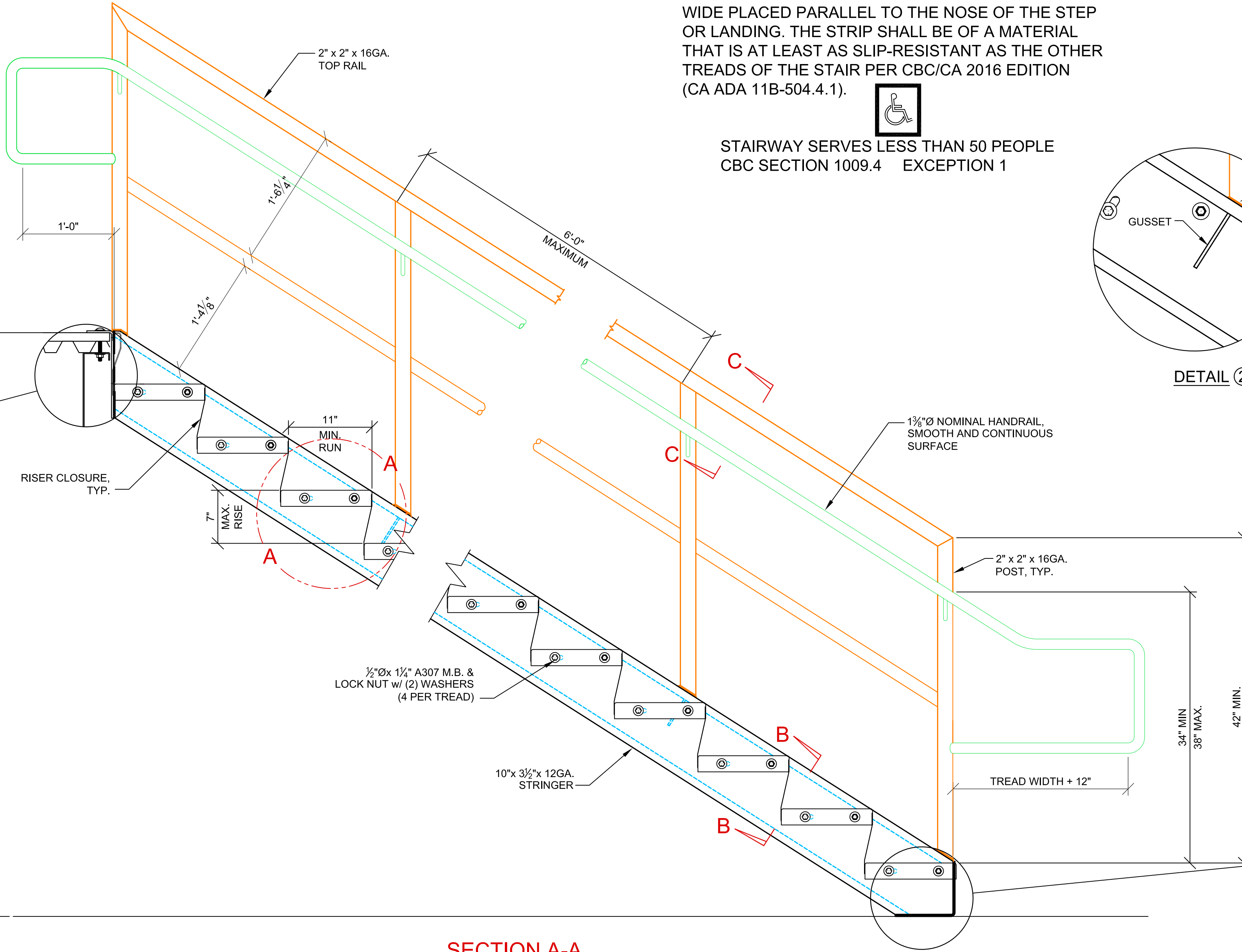


PLAN

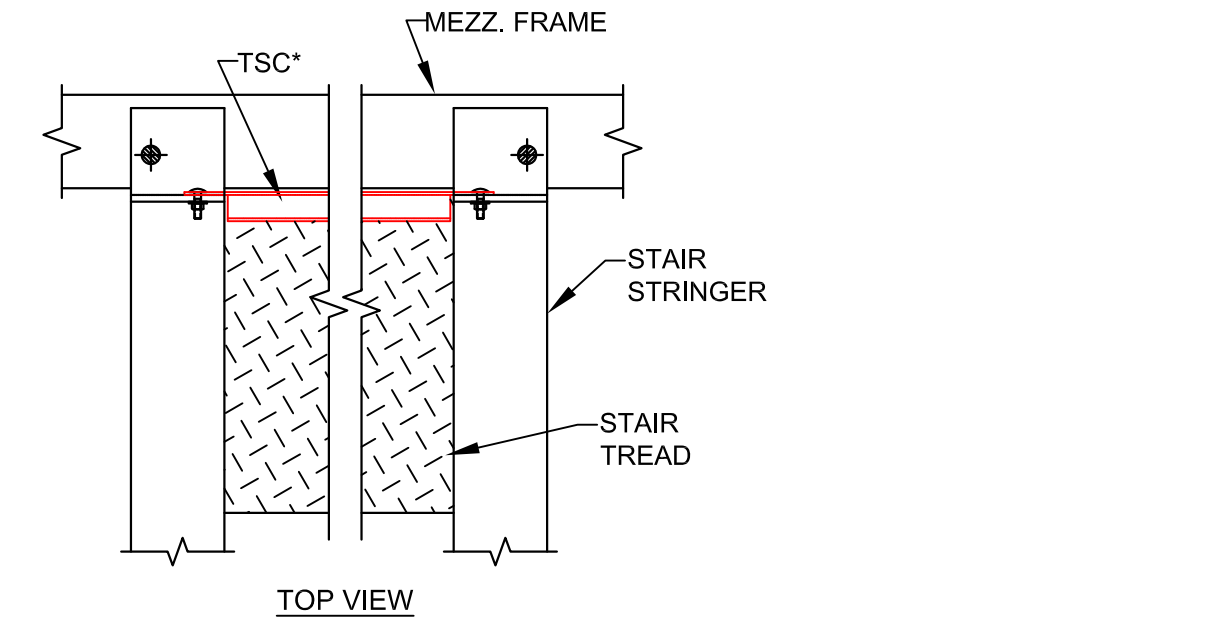
NOTE: THE UPPER APPROACH AND THE LOWER TREAD OF EACH STAIR SHALL BE MARKED BY A STRIP OF CLEARLY CONTRASTING COLOR AT LEAST 2 INCHES WIDE PLACED PARALLEL TO THE NOSE OF THE STEP OR LANDING. THE STRIP SHALL BE OF A MATERIAL THAT IS AT LEAST AS SLIP-RESISTANT AS THE OTHER TREADS OF THE STAIR PER CBC/CA 2016 EDITION (CA ADA 11B-504.4.1).



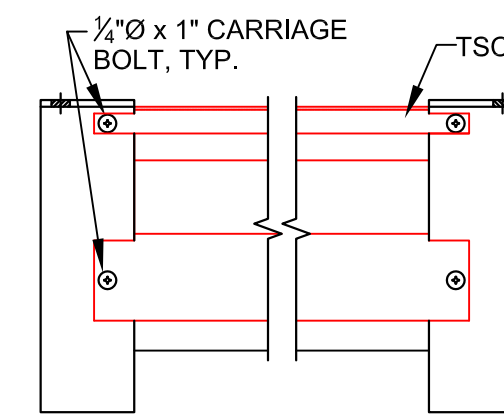
STAIRWAY SERVES LESS THAN 50 PEOPLE
CBC SECTION 1009.4 EXCEPTION 1



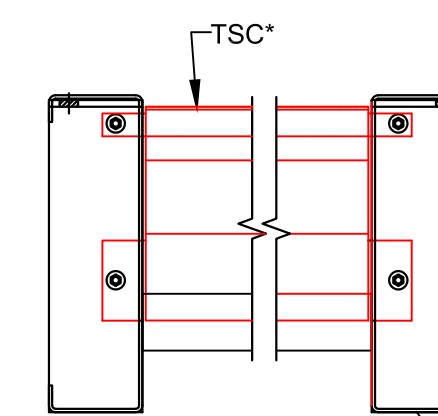
SECTION A-A



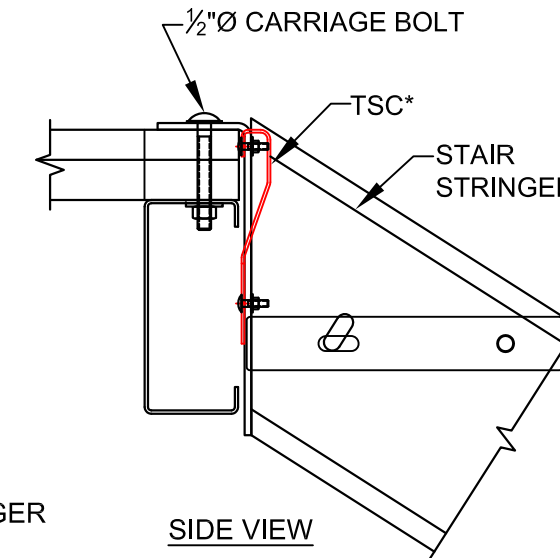
TOP VIEW



REAR VIEW



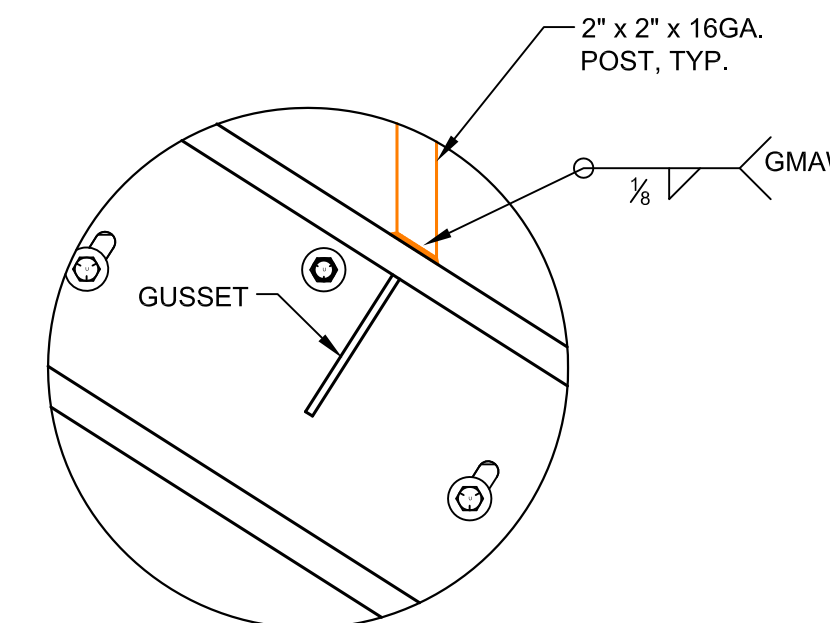
FRONT VIEW



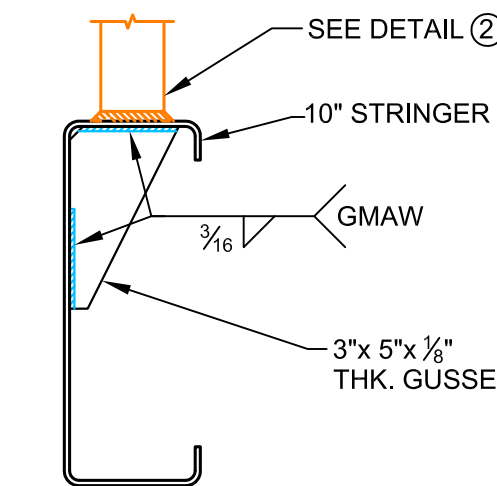
SIDE VIEW

TOP STAIR CLOSURE DETAIL

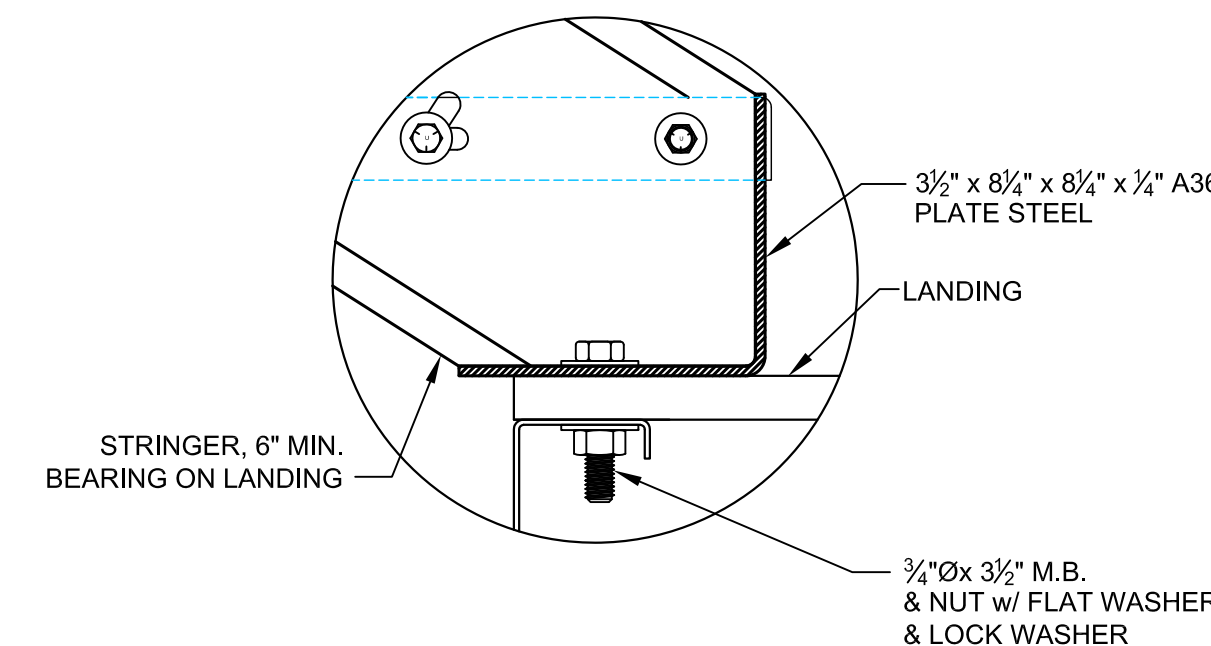
NOTE: INSTALL TOP STAIR CLOSURE (TSC*) AND TOP AND BOTTOM TREADS BEFORE RAISING STRINGERS TO DECK.



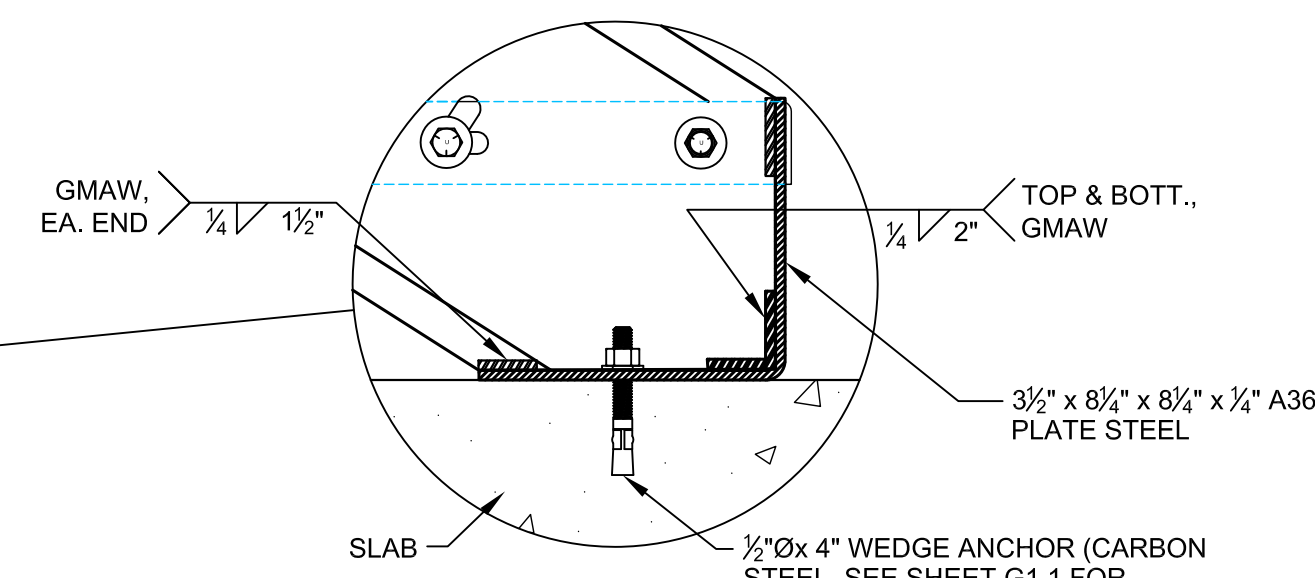
DETAIL 2



SECTION B-B
GUSSET WELDING DETAIL



STAIR CONNECTION @ LANDING



STAIR CONNECTION @ SLAB



ATTENTION DEALER/RENDERING USER:
THIS DRAWING AND ALL INFORMATION HEREON, INCLUDING THE SCALE, PROPERTY OF FCP, INC. ("FCP"). ITS USE IS PROVIDED FOR CONSTRUCTING THE SYSTEM DESCRIBED IN THE TOP PROPOSAL AND IS NOT IN ANY WAY TO BE REPLICATED, FABRICATED, OR USED FOR ANY OTHER PURPOSE THAN THAT STATED IN OUR AGREEMENT WITHOUT PRIOR WRITTEN APPROVAL BY FCP.
PERSONS CONSTRUCTING THE SYSTEM ARE HELD RESPONSIBLE FOR ADHERING TO THE DRAWING DETAILS, AND MUST COMPLY TO WORKMANSHIP AND SAFETY STANDARDS SET FORTH BY FCP AND INDUSTRY.
IT IS THE SOLE RESPONSIBILITY OF THE DEALER/RENDERING USER TO INQUIRE OF MATERIAL ARRIVING AT THE JOB SITE AGAINST ITS PROHIBITION. IF A SHORTAGE EXISTS, IT SHALL BE NOTED ON THE DRAWING AND THE USER SHALL BE NOTIFIED BY FCP BEFORE CONSTRUCTION COMMENCES.
UPON NOTIFYING FCP OF THE MISSING COMPONENTS, FCP WILL MAKE EVERY EFFORT TO GET PARTS TO THE JOB SITE VIA TRUCK. FCP WILL NOT INCUR ANY COST DUE TO ANY DELAY CAUSED BY MISSING COMPONENTS.
IF A COMPONENT HAS BEEN FABRICATED IN ERROR, FCP SHALL BE WITHIN 10 BUSINESS DAYS TO DETERMINE CORRECTIVE ACTION. FCP WILL NOT BE HELD FINANCIALLY RESPONSIBLE FOR MATERIALS OR METASTABLY FABRICATED PARTS DUE TO MISSING OR SHORT SUPPLY. THE CUSTOMER AND/OR DEALER, AFTER A MUTUALLY AGREED UPON COST FOR CORRECTING ANY FABRICATION ERRORS, FCP WILL COMMENCE WITH FABRICATION.

DWG. HISTORY/REVISIONS	DATE	BY
ENGINEERING PKG. COMPLETED	04.13.17	B.F.
ADDED FOOTINGS TO DRAWING SHEET S1.1	04.17.17	B.F.
MOVED 2 COLUMNS & CHANGED T.O.D. TO 14'	04.17.17	B.F.
REVISED ENGINEERING PKG.	07.11.17	J.M.
REVISED ENGINEERING PKG.	08.11.17	J.M.

STAIR DETAILS	CHK. BY: B. FROMAN	DATE: 8.14.17
PROJECT: SB1022 FAIRFIELD 2500 CLAY BANK RD. FAIRFIELD, CA 94533	DRAWN BY: N.T.S.	DATE: 8.14.17
SCALE: Fairfield 1/16" = 1'-0"	DATE: 8.14.17	HP-dwg
DEALER: HENSEL PHELPS 5600 WEST CENTURY BLVD. LOS ANGELES, CA 90045	DATE: 8.14.17	HP-dwg



SHEET NUMBER:
S5.5
SHEET 10 OF 10

FILE LOCATION: