

PHX **AVT BYB**  
CITY OF PHOENIX AVIATION DEPARTMENT

PHX SKY TRAIN  
STAGE 2 DESIGN  
500 S. 24TH STREET  
PHOENIX, AZ 85034

PER CITY OF PHOENIX ORDINANCE G-4386, THESE PLANS ARE FOR OFFICIAL USE ONLY AND MAY NOT BE SHARED WITH OTHERS EXCEPT AS REQUIRED TO FULFILL THE OBLIGATIONS OF YOUR CONTRACT WITH THE CITY OF PHOENIX.

Designed by:	R&R
Drawn by:	R&R
Checked by:	R&R
Date:	09/07/2018
Dwg scale:	As indicated
CIP No.:	AV10000011
KIVA No.:	07-5204

STAGE 2 - B04 DESIGN SUBMISSION

RCC STATION  
ART WALL  
LOCATION PLAN

Package:

Sheet Reference No:

B04-RBAT0001

V6 - 171A OF 260

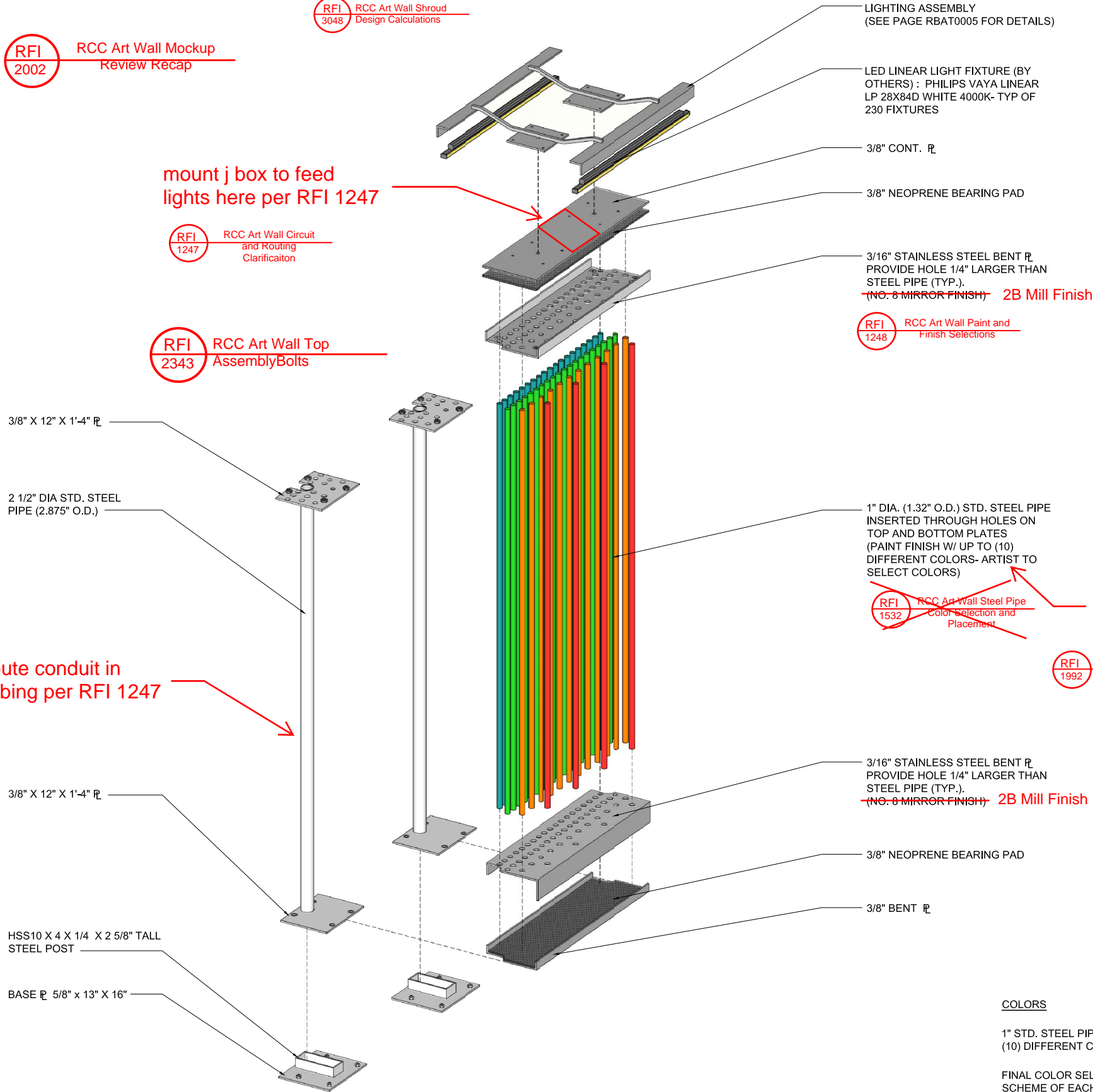
Design Sub-Consultant

R & R STUDIOS

Design Consultant

Gannett Fleming

1	BULLETIN 0018	REVISIONS / SUBMISSIONS	09/07/18
NO.			



1  
RBAT0002

**EXPLODED VIEW OF TYPICAL ART WALL SECTION**  
N.T.S.

**COLORS**

1" STD. STEEL PIPES SHALL BE PAINTED WITH (10) DIFFERENT COLORS.

FINAL COLOR SELECTION AND COLOR SCHEME OF EACH SECTION OF ART WALL SHALL BE PROVIDED BY THE ARTIST.

PAINTED SAMPLES OF ALL COLORS SHALL BE SUBMITTED FOR ARTIST APPROVAL PRIOR TO FABRICATION.

**PROJECT DESCRIPTION:**

THE ART WALL IS LOCATED ALONG THE EDGES OF THE DE-BOARDING PLATFORMS ON BOTH SIDES OF THE PHOENIX SKY TRAIN RENTAL CAR STATION AND IS APPROXIMATELY 460 FEET LONG. THE ART WALL IS 14 INCH THICK AND CONSISTS OF (4) LAYERS OF MULTICOLORED STEEL PIPES WITHIN A STEEL FRAME.

**GENERAL NOTES:**

THE ART FABRICATOR SHALL VERIFY ALL DIMENSIONS AND SITE CONDITIONS AT THE JOB SITE PRIOR TO STARTING WORK AND SHALL PROMPTLY NOTIFY THE ARTIST OF ANY DISCREPANCIES.

ALL WORKMANSHIP AND MATERIALS SHALL CONFIRM TO LOCAL CODES.

ART INSTALLER SHALL TAKE ALL NECESSARY PRECAUTIONARY MEASURES TO PROTECT THE PUBLIC AND ADJACENT PROPERTIES FROM DAMAGE THROUGHOUT CONSTRUCTION.

WRITTEN DIMENSIONS AND NOTES ARE TYPICAL FOR SIMILAR CONDITIONS, UNLESS OTHERWISE NOTED IN THE CONSTRUCTION DOCUMENTS. DO NOT SCALE DRAWINGS. IF REQUIRED DIMENSIONS OR NOTES ARE NOT INDICATED, THE CONTRACTOR SHALL NOTIFY THE ARTIST FOR RESOLUTION.

THE ART FABRICATOR SHALL PROVIDE PRODUCT APPROVALS, SHOP DRAWINGS AND/OR SAMPLES OF ALL CUSTOM-FABRICATED ITEMS TO ARTIST FOR REVIEW AND APPROVAL PRIOR TO INSTALLATION. SUBSTITUTIONS FOR SPECIFIED PRODUCTS SHALL BE APPROVED BY ARTIST PRIOR TO ORDERING.

THE ART INSTALLER SHALL RESTORE ALL PROPERTY THAT ARE DISTURBED DURING CONSTRUCTION AND INSTALLATION TO THEIR ORIGINAL CONDITION.

THE ART FABRICATOR SHALL GUARANTEE ALL WORK AGAINST IMPERFECT WORKMANSHIP, FAILURE, MALFUNCTION OF MATERIALS DUE TO FAULTY OR IMPERFECT WORKMANSHIP.

ALL EDGES, & CORNERS SHALL BE DEVOID OF SHARP EDGES & SANDED SMOOTH FINISH

ALL EXPOSED WELDED CORNERS, EDGES, & SURFACES SHALL BE SANDED SMOOTH FINISH

EXPOSED SCREW HEADS AND BOLTS SHALL BE PAINTED SAME COLOR AS THE SURFACE IT IS ATTACHED TO.

**PAINT**

ALL PARTS SHALL BE PAINTED WITH TENEMEC COATING SYSTEM BELOW OR ARTIST APPROVED EQUAL(UNLESS OTHERWISE NOTED)

PRIME COAT: BARE STEEL: APPLY (1) COAT OF TNEMEC SERIES 90-97 TNEME-ZINC AROMATIC URETHANE ZINC RICH PRIMER AT 2.5 - 3.5 MILS DFT.

INTERMEDIATE COAT: APPLY OVERALL (1) COAT OF TNEMEC SERIES 66HS EPOXOLINE HIGH BUILD EPOXY APPLIED AT THE RATE OF 4.0 - 6.0 MILS DFT.

FINISH COAT: APPLY OVERALL (1) COAT OF TNEMEC SERIES 740UVX GLOSSY POLYCARBAMIDE APPLIED AT THE RATE OF 3.0 - 5.0 MILS DFT.

SURFACE PREPARATION:  
REMOVE ANY OIL OR GREASE BEFORE BLASTING IN ACCORDANCE WITH SSPC- SP1 SOLVENT CLEANING. ABRASIVE BLAST ALL STEEL SURFACES TO A MINIMUM SSPC- SP6 / NACE NO.3 COMMERCIAL GRADE METHOD PROVIDING A 1.5 - 2.0 MIL BLAST PROFILE. APPLY COATINGS BEFORE ANY RUST BLOOM FORMS. DAILY, ALL SURFACES MUST BE CLEAN IN ACCORDANCE WITH AN SSPC-SP1 AND DRY PRIOR TO THE APPLICATION OF ANY COATINGS. PAY PARTICULAR ATTENTION TO EDGES, BOLTS AND CORNERS.

PER CITY OF PHOENIX ORDINANCE G-4386, THESE PLANS ARE FOR OFFICIAL USE ONLY AND MAY NOT BE SHARED WITH OTHERS EXCEPT AS REQUIRED TO FULFILL THE OBLIGATIONS OF YOUR CONTRACT WITH THE CITY OF PHOENIX.

**PHX** CITY OF PHOENIX AVIATION DEPARTMENT

Designed by: R&R

Drawn by: R&R

Checked by: R&R

Date: 09/07/2018

Dwg scal As Indicated

CJP No.: AV10000011

KIVA No.: 07-6204

STAGE 2 - B04 DESIGN SUBMISSION

Package: Sheet Reference No:  
**B04-RBAT0002**  
V6 - 171B OF 260

**RCC STATION  
ART WALL  
EXPLODED VIEW OF  
ART WALL COMPONENTS**

Design Sub-Consultant

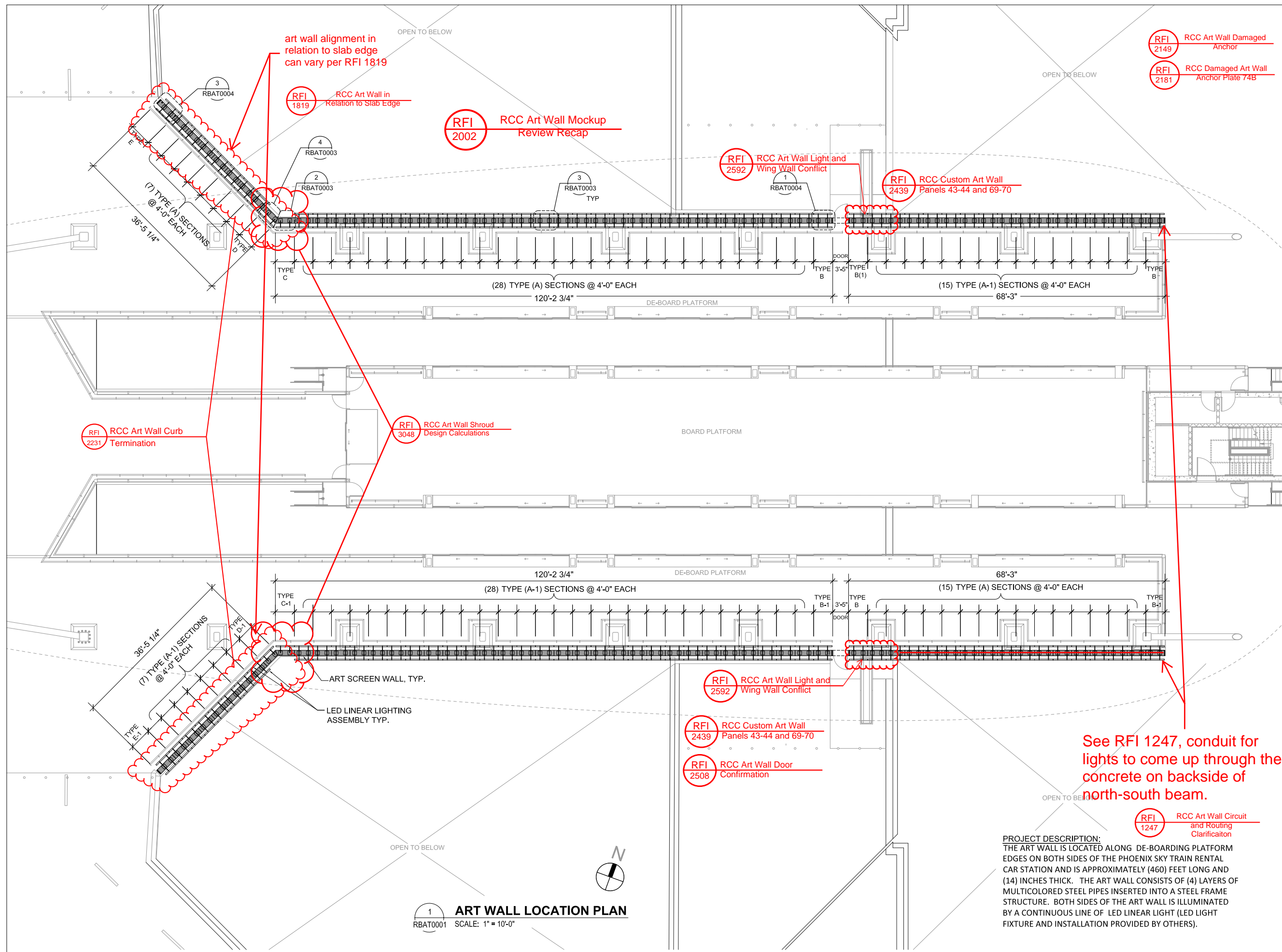
**R & R STUDIOS**

Design Consultant

**Gannett Fleming**

09/07/18

1 BULLETIN 0018  
NO. REVISIONS / SUBMISSIONS



PER CITY OF PHOENIX ORDINANCE G-4396, THESE PLANS ARE FOR OFFICIAL USE ONLY AND MAY NOT BE SHARED WITH OTHERS EXCEPT AS REQUIRED TO FULFILL THE OBLIGATIONS OF YOUR CONTRACT WITH THE CITY OF PHOENIX.

**PHX** **AVT** **EVZ**  
CITY OF PHOENIX AVIATION DEPARTMENT

**PHX SKY TRAIN  
STAGE 2 DESIGN  
500 S. 24TH STREET  
PHOENIX, AZ 85034**

## STAGE 2 - B04 DESIGN SUBMISSION

**RCC STATION  
ART WALL  
LOCATION PLAN**

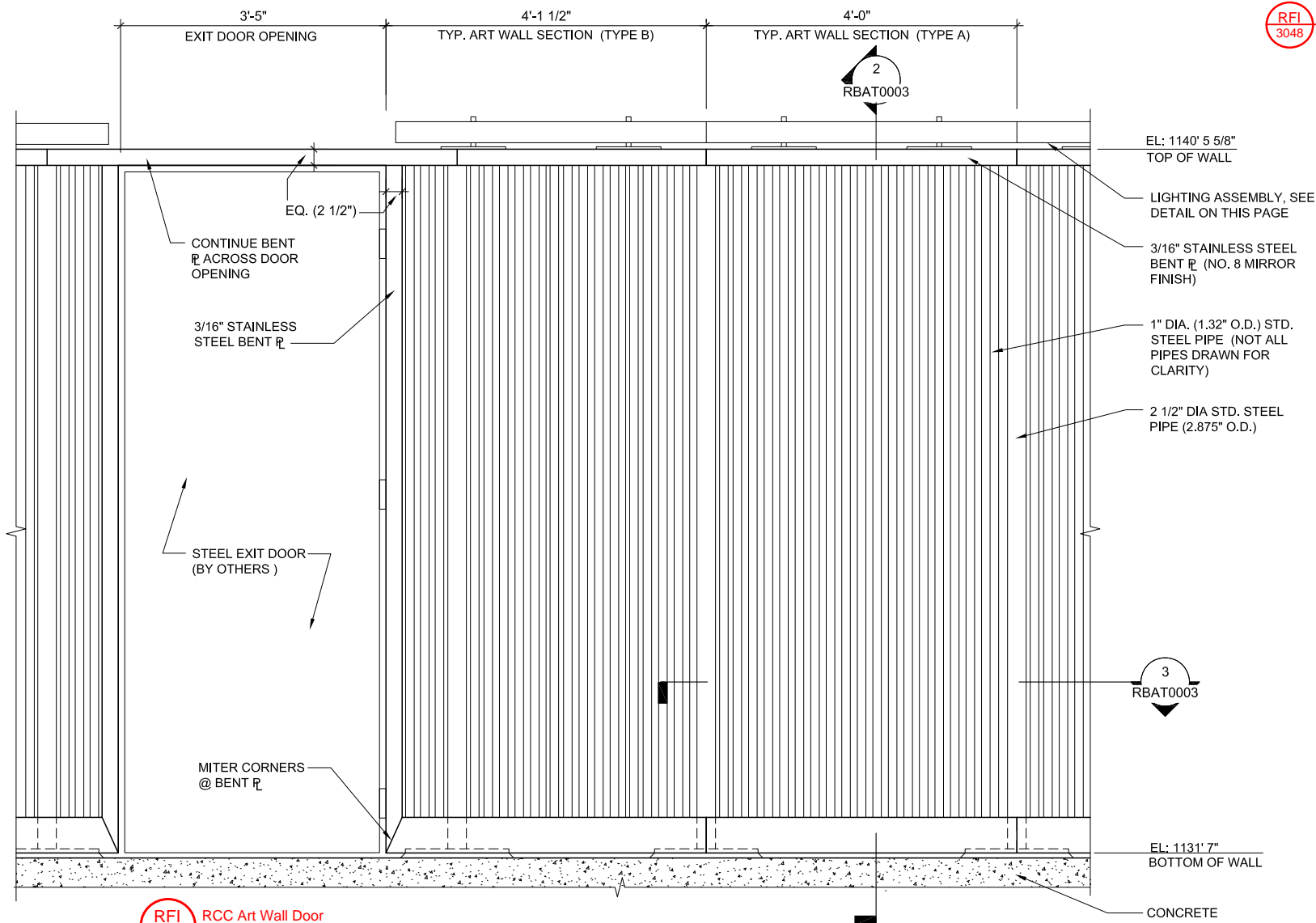
Package: **B04 - RBAT0001**  
 Sheet Reference No: **V6 - 171A OF 260**

Design Sub-Consultant

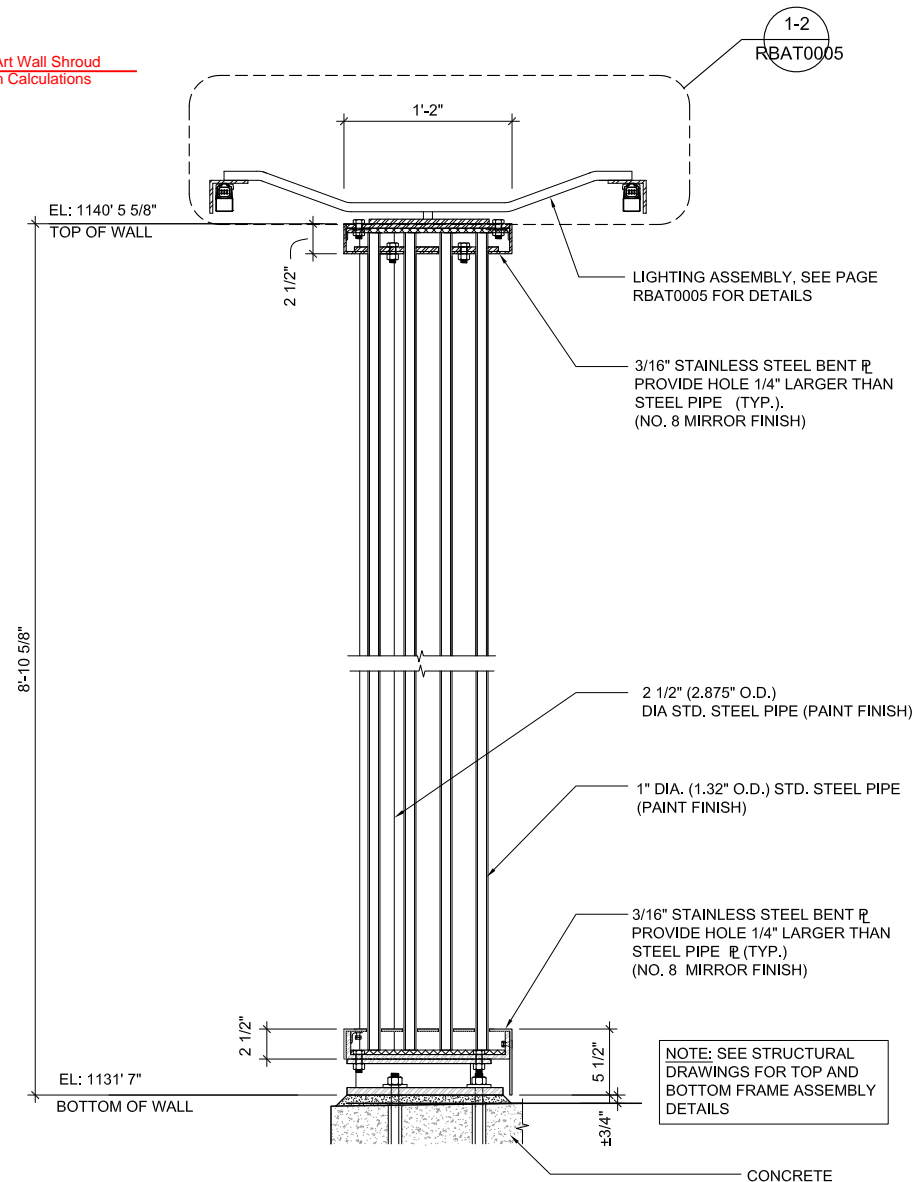
## R & R STUDIOS



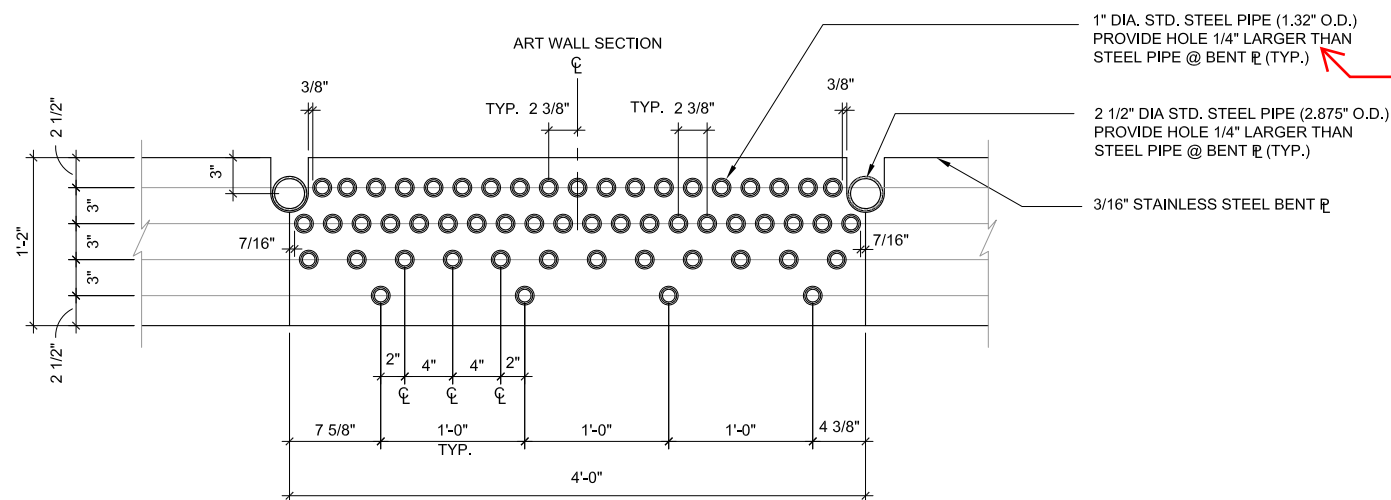
**Gannett Fleming**  
Design Consultant



1 TYP. ELEVATION AT ART SCREEN WALL  
RBAT0003 SCALE: 1"=1'-0"



2 TYP. SECTION AT ART SCREEN WALL  
RBAT0003 SCALE: 1 1/2"=1'-0"



3 PLAN @ TYPICAL PANEL TYPE (A)  
RBAT0003 SCALE: 1 1/2"=1'-0"

RFI 2002 RCC Art Wall Mockup Review Recap

RFI 2343 RCC Art Wall Top AssemblyBolts

PER CITY OF PHOENIX ORDINANCE G-4386, THESE PLANS ARE FOR OFFICIAL USE ONLY AND MAY NOT BE SHARED WITH OTHERS EXCEPT AS REQUIRED TO FULFILL THE OBLIGATIONS OF YOUR CONTRACT WITH THE CITY OF PHOENIX.

PHX AVIATION DEPARTMENT  
CITY OF PHOENIX

PHX SKY TRAIN  
STAGE 2 DESIGN  
500 S. 24TH STREET  
PHOENIX, AZ 85034

Designed by:	R&R
Drawn by:	R&R
Checked by:	R&R
Date:	09/07/2018
Dwg scal	As Indicated
CJP No.:	AV10000011
KIVA No.:	07-5204

STAGE 2 - B04 DESIGN SUBMISSION

RCC STATION  
ART WALL  
TYPICAL SECTION

Package: Sheet Reference No:  
**B04-RBAT0003**  
V6 - 171C OF 260

Design Sub-Consultant

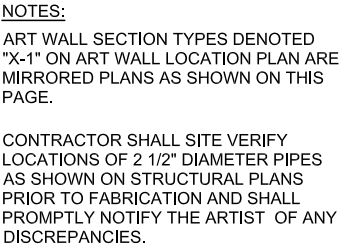
R & R STUDIOS

Design Consultant

**Gannett Fleming**

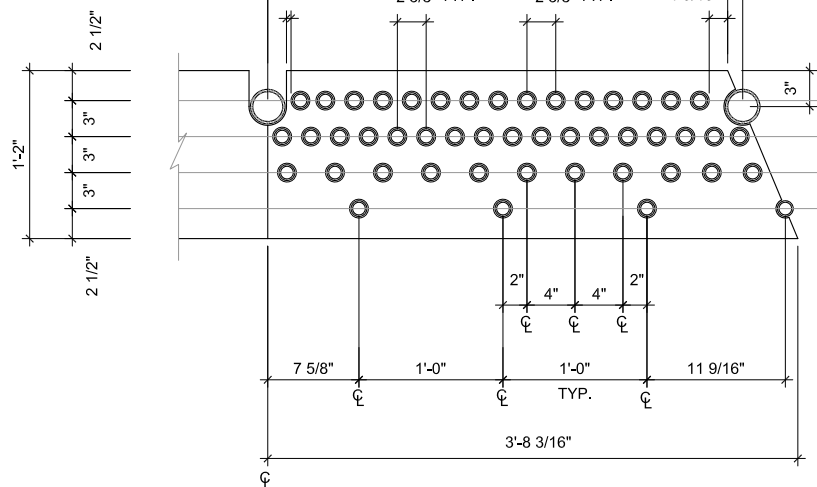
1	BULLETIN 0018	REVISIONS / SUBMISSIONS	09/07/18
---	---------------	-------------------------	----------





3  
RBAT0004

**PLAN @ ART WALL SECTION TYPE (E)**  
SCALE: 1 1/2" = 1'-0"



4  
RBAT0004

**PLAN @ ART WALL SECTION TYPE (D)**  
SCALE: 1 1/2" = 1'-0"

STAGE 2 - B04 DESIGN SUBMISSION		RCC STATION ART WALL PIPE LAYOUT PLANS		Designed by: R&R	 CITY OF PHOENIX AVIATION DEPARTMENT		PER CITY OF PHOENIX ORDINANCE G-4386, THESE PLANS ARE FOR OFFICIAL USE ONLY AND MAY NOT BE SHARED WITH OTHERS EXCEPT AS REQUIRED TO FULFILL THE OBLIGATIONS OF YOUR CONTRACT WITH THE CITY OF PHOENIX.			
				Drawn by: R&R						
				Checked by: R&R						
				Date: 09/07/2018						
				Dwg. scal As indicated						
				GIP No.: AV10000011						
				KIVA No.: 07-5204						



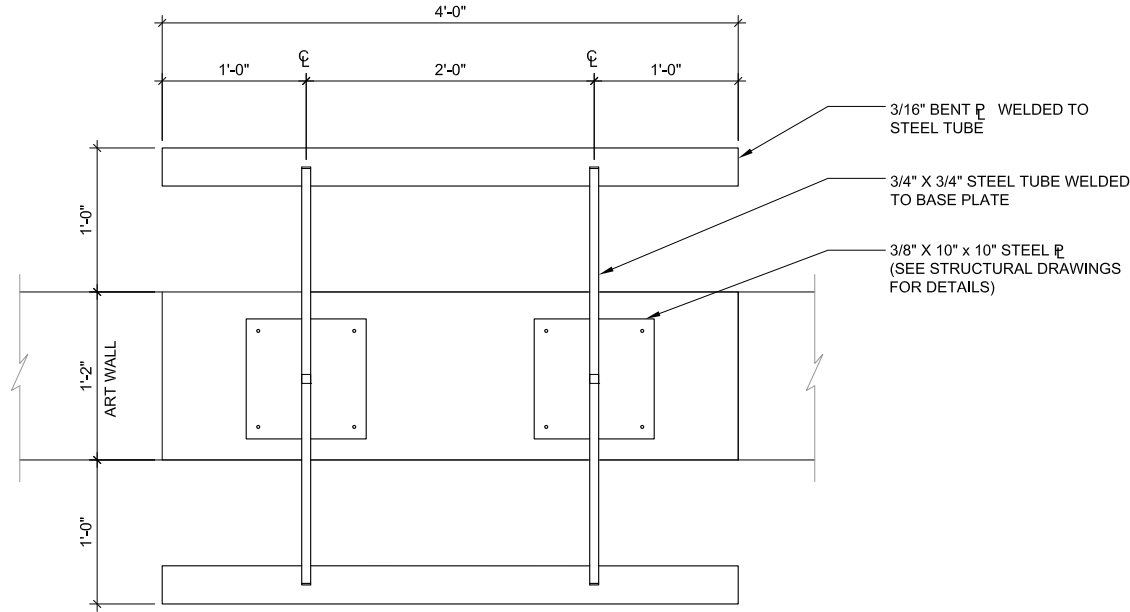
## RCC Art Wall Mockup

---

### Review Recap

RFI  
3048

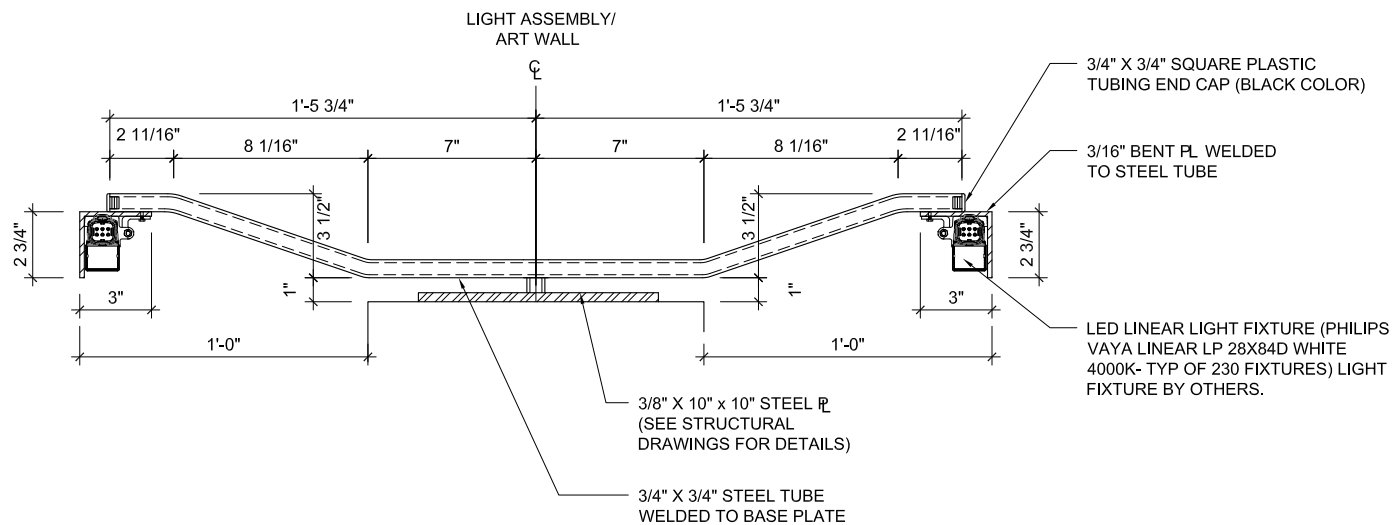
## RCC Art Wall Shroud Design Calculations



 **TYP PLAN @ LIGHTING ASSEMBLY**  
RBAT0005 SCALE: 1 1/2" = 1'-0"

RFI  
2931

### RCC Art Wall Light Corner Condition



2  
RBAT0005

**TYP. SECTION @ LIGHTING ASSEMBLY**

SCALE: 3"=1'-0"

NOTES:

LIGHT ASSEMBLY SHALL BE PAINT  
FINISHED (COLOR: TBD BY ARTIST)

LOCATE ALL CONDUITS, ELECTRICAL WIRES, JUNCTION BOXES OUT OF SIGHT. LED LIGHT INSTALLER SHALL SUBMIT CONDUIT AND WIRING PLAN FOR ARTIST APPROVAL PRIOR TO INSTALLATION.

A PROTOTYPE OF ONE TYPICAL SECTION OF ART WALL INCLUDING LED LINEAR LIGHT SHALL BE FABRICATED FOR ARTIST APPROVAL PRIOR TO FABRICATING THE REMAINDER OF WALL SECTIONS.

LED LIGHTS SHALL NOT BE ORDERED  
PRIOR TO ARTIST APPROVAL OF THE  
ART WALL PROTOTYPE SECTION.

[illegible]

**PHX SKY TRAIN  
STAGE 2 DESIGN  
500 S. 24TH STREET  
PHOENIX, AZ 85034**

Designed by: R&amp;R

Drawn by: R&R

Checked by: R&amp;R

Date: 09/07/2018

Dwg	scal	As indicated
-----	------	--------------

CIP No.: AV10000011

KIVA No.: 07-5204

## STAGE 2 - B04 DESIGN SUBMISSION

**RCC STATION  
ART WALL  
LIGHTING ASSEMBLY**

Package: Sheet Reference No:  
**B04- RBAT0005**  
V6 - 171E OF 260