

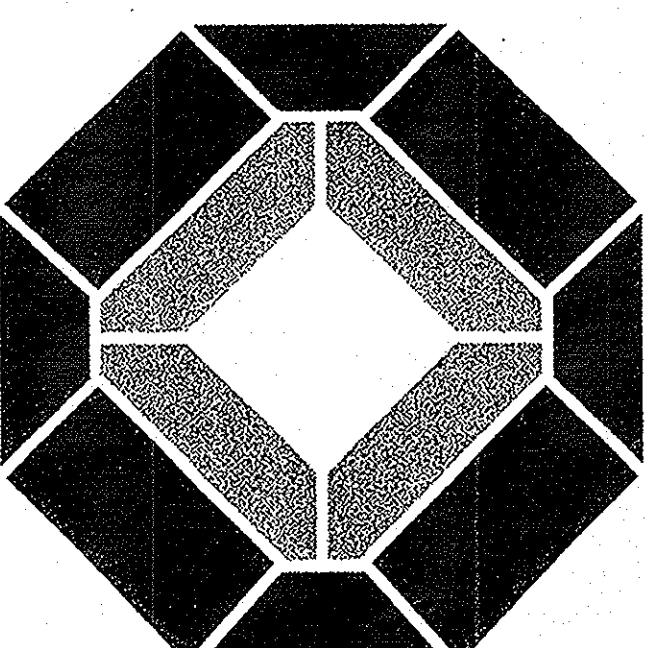
[illegible]

Consultant

Project

UCI - EAST CAMPUS
STUDENT APTS.
PHASE 1
IRVINE
CALIFORNIA

2001077



KTGY GROUP, INC.

17992 MITCHELL, SO
IRVINE, CA 92614
(949) 851-2133
(949) 851-5156 FAX

License Stamp

Stamp: CONTRACT SEE

Principal in Charge ,	D. McALLISTER
Project Director ,	D. McALLISTER
Project Manager ,	W. WONG
Project Designer ,	D. TATNANN
Checked By ,	
Sheet Title ,	
BUILDING TYPE C	
COMPOSITE	
1ST AND 2ND	
FLOOR PLANS	

Sheet No.

ACT

SUMMARY

FLOOR AREA SUMMARY (FIRST FLOOR)	
BLDG OCCUPANCY	
A. CONVENTED DWELLING	3846 SF
B. CONVERTED RESIDENTIAL SERVICE	557 SF
C. CONVERTED UNCONVENTED COMMON BLDG	687 SF
TOTAL	5090 SF
FLOOR AREA SUMMARY (SECOND FLOOR)	
BLDG OCCUPANCY	
A. CONVENTED DWELLING	3946 SF
B. CONVERTED RESIDENTIAL SERVICE	720 SF
C. CONVERTED UNCONVENTED COMMON BLDG	577 SF
TOTAL	5243 SF
BUILDING AREA TOTALS	
BLDG OCCUPANCY	5534 SF

NOTES

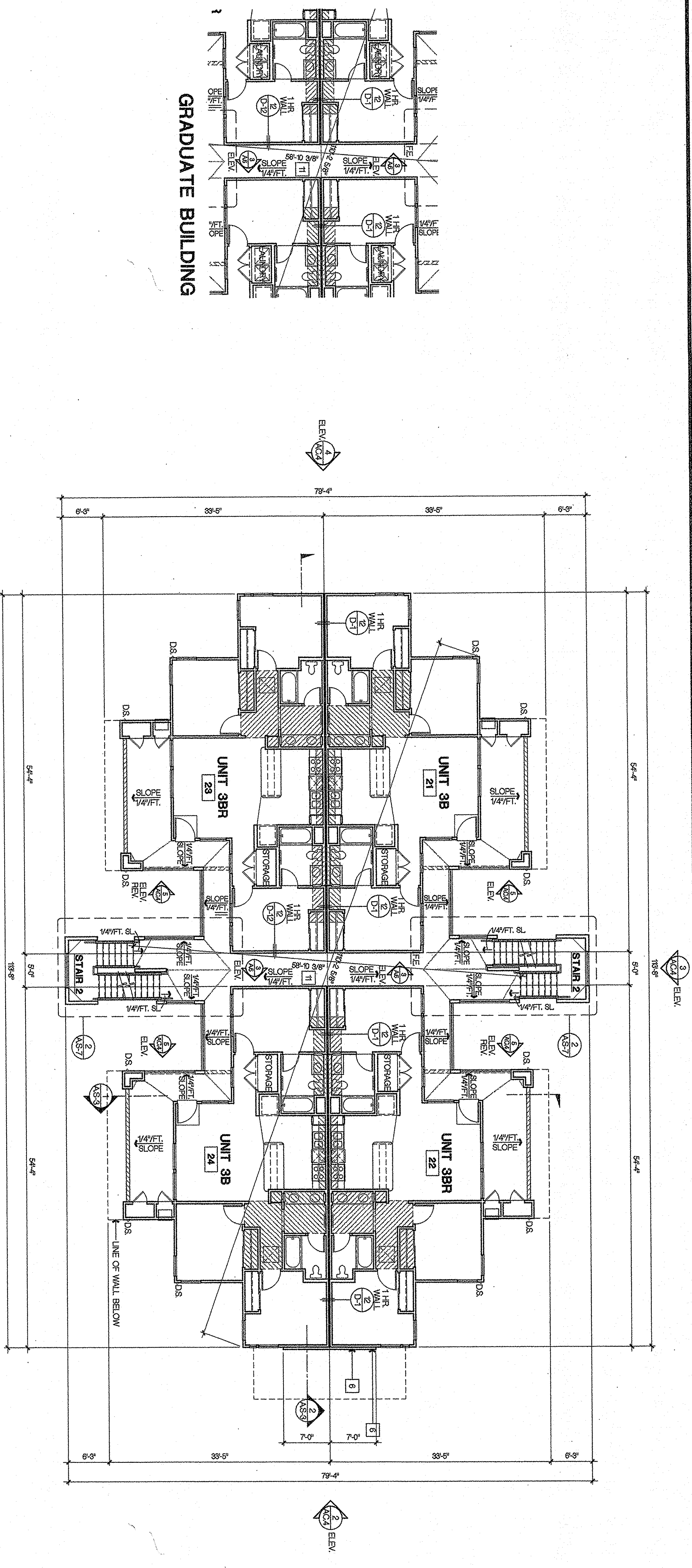
- [illegible]

SYMBOLS

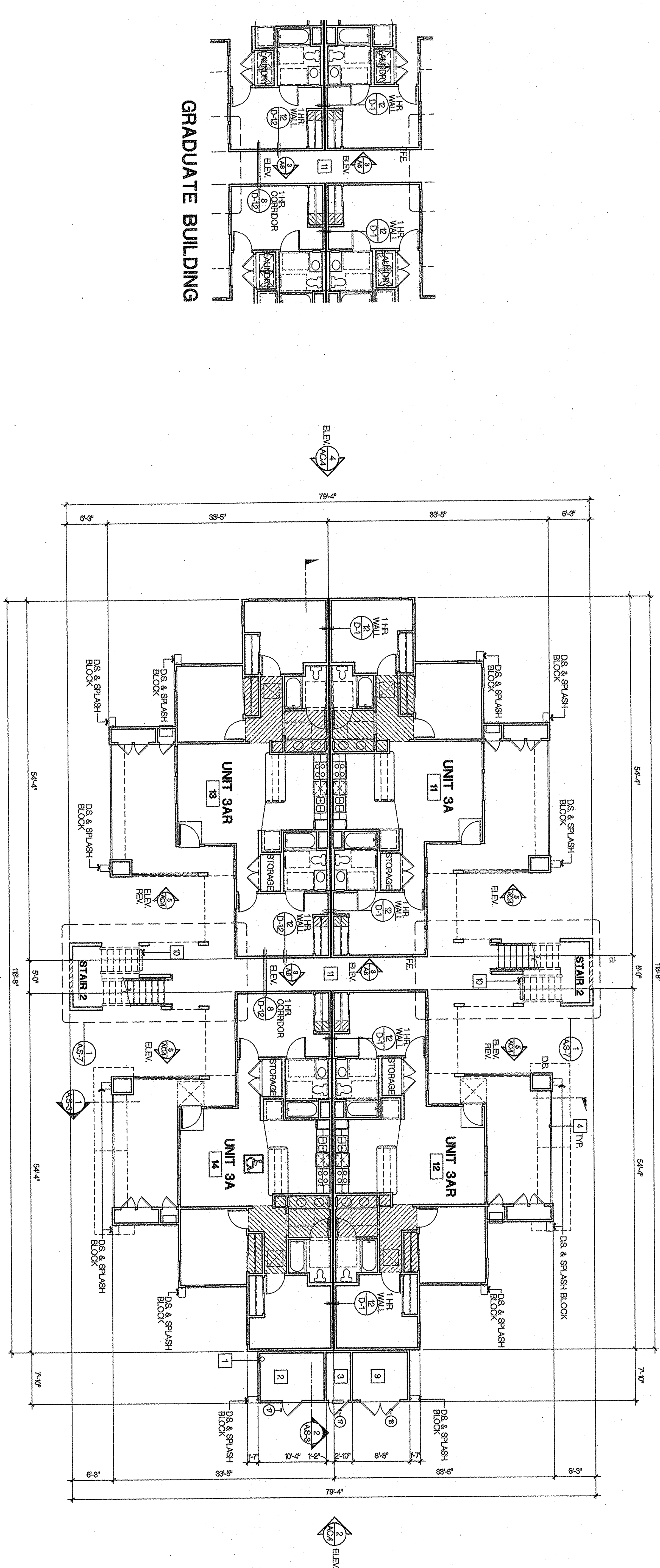
7. SPRINKLING WILL BE PROVIDED AT THROATLINE, ELECTRICAL PANELS, AND ALL EXITS. ALL EXITS WILL BE PROVIDED WITH EXIT SPRINKLER AND FIVE EXTENDING TO THROATLINE (THAT LEAD TO EXITS ASSEMBLED BY FLOOR, SECTION ONE AND TWO).
8. ALL VERTICAL DUCTWORK NOTED IN SPECIFIC CEILING HEADERS/CEILING FLOOR JOINTS, THE TOP OF SUSPENDING OR FINISH FLOOR SHALL BE AT THE INTERIOR OF THE UNITS.
9. PROVIDE WATERTIGHT AND DIRT TIGHTLY DUCTWORK WITH A MINIMUM OF 18" CLEARANCE FROM THE FLOOR LABEL, PER UBC, SECTION 902.
10. SHALL PROVIDE DUCTWORK INSTALLED IN UNITS/VENTS, AND ALL PLUMBING REQUIRED TO SET WALL WITH SHIELDING PLANS FOR MINIMUM STRUCTURAL REQUIREMENTS.
11. SOLATE PLUMBING & PIPING WALLS PER DETAILED, 8" R/C 15' D-T 15'.
12. THE EXISTING DRAINAGE FROM THE TOP OF SPRINKLING IN THE EXITS SHALL BE PROVIDED WITH A MINIMUM OF 18" CLEARANCE FROM THE FLOOR LABEL, PER UBC, SECTION 902.
13. INTERIOR UNIT FLOOR TOPPING AND GROUT THICK AND WATERPROOFED PER DETAIL AT EXTERIOR STAGES.
14. EXIST DRAINAGE AT EXTERIOR STAGES.
15. EXIST DRAINAGE AT EXTERIOR STAGES.
16. EXIST DRAINAGE AT EXTERIOR STAGES.
17. EXIST DRAINAGE AT EXTERIOR STAGES.
18. EXIST DRAINAGE AT EXTERIOR STAGES.
19. EXIST DRAINAGE AT EXTERIOR STAGES.
20. EXIST DRAINAGE AT EXTERIOR STAGES.
21. EXIST DRAINAGE AT EXTERIOR STAGES.
22. EXIST DRAINAGE AT EXTERIOR STAGES.
23. EXIST DRAINAGE AT EXTERIOR STAGES.
24. EXIST DRAINAGE AT EXTERIOR STAGES.
25. EXIST DRAINAGE AT EXTERIOR STAGES.
26. EXIST DRAINAGE AT EXTERIOR STAGES.
27. EXIST DRAINAGE AT EXTERIOR STAGES.
28. EXIST DRAINAGE AT EXTERIOR STAGES.
29. EXIST DRAINAGE AT EXTERIOR STAGES.
30. EXIST DRAINAGE AT EXTERIOR STAGES.
31. EXIST DRAINAGE AT EXTERIOR STAGES.
32. EXIST DRAINAGE AT EXTERIOR STAGES.
33. EXIST DRAINAGE AT EXTERIOR STAGES.
34. EXIST DRAINAGE AT EXTERIOR STAGES.
35. EXIST DRAINAGE AT EXTERIOR STAGES.
36. EXIST DRAINAGE AT EXTERIOR STAGES.
37. EXIST DRAINAGE AT EXTERIOR STAGES.
38. EXIST DRAINAGE AT EXTERIOR STAGES.
39. EXIST DRAINAGE AT EXTERIOR STAGES.
40. EXIST DRAINAGE AT EXTERIOR STAGES.
41. EXIST DRAINAGE AT EXTERIOR STAGES.
42. EXIST DRAINAGE AT EXTERIOR STAGES.
43. EXIST DRAINAGE AT EXTERIOR STAGES.
44. EXIST DRAINAGE AT EXTERIOR STAGES.
45. EXIST DRAINAGE AT EXTERIOR STAGES.
46. EXIST DRAINAGE AT EXTERIOR STAGES.
47. EXIST DRAINAGE AT EXTERIOR STAGES.
48. EXIST DRAINAGE AT EXTERIOR STAGES.
49. EXIST DRAINAGE AT EXTERIOR STAGES.
50. EXIST DRAINAGE AT EXTERIOR STAGES.
51. EXIST DRAINAGE AT EXTERIOR STAGES.
52. EXIST DRAINAGE AT EXTERIOR STAGES.
53. EXIST DRAINAGE AT EXTERIOR STAGES.
54. EXIST DRAINAGE AT EXTERIOR STAGES.
55. EXIST DRAINAGE AT EXTERIOR STAGES.
56. EXIST DRAINAGE AT EXTERIOR STAGES.
57. EXIST DRAINAGE AT EXTERIOR STAGES.
58. EXIST DRAINAGE AT EXTERIOR STAGES.
59. EXIST DRAINAGE AT EXTERIOR STAGES.
60. EXIST DRAINAGE AT EXTERIOR STAGES.
61. EXIST DRAINAGE AT EXTERIOR STAGES.
62. EXIST DRAINAGE AT EXTERIOR STAGES.
63. EXIST DRAINAGE AT EXTERIOR STAGES.
64. EXIST DRAINAGE AT EXTERIOR STAGES.
65. EXIST DRAINAGE AT EXTERIOR STAGES.
66. EXIST DRAINAGE AT EXTERIOR STAGES.
67. EXIST DRAINAGE AT EXTERIOR STAGES.
68. EXIST DRAINAGE AT EXTERIOR STAGES.
69. EXIST DRAINAGE AT EXTERIOR STAGES.
70. EXIST DRAINAGE AT EXTERIOR STAGES.
71. EXIST DRAINAGE AT EXTERIOR STAGES.
72. EXIST DRAINAGE AT EXTERIOR STAGES.
73. EXIST DRAINAGE AT EXTERIOR STAGES.
74. EXIST DRAINAGE AT EXTERIOR STAGES.
75. EXIST DRAINAGE AT EXTERIOR STAGES.
76. EXIST DRAINAGE AT EXTERIOR STAGES.
77. EXIST DRAINAGE AT EXTERIOR STAGES.
78. EXIST DRAINAGE AT EXTERIOR STAGES.
79. EXIST DRAINAGE AT EXTERIOR STAGES.
80. EXIST DRAINAGE AT EXTERIOR STAGES.
81. EXIST DRAINAGE AT EXTERIOR STAGES.
82. EXIST DRAINAGE AT EXTERIOR STAGES.
83. EXIST DRAINAGE AT EXTERIOR STAGES.
84. EXIST DRAINAGE AT EXTERIOR STAGES.
85. EXIST DRAINAGE AT EXTERIOR STAGES.
86. EXIST DRAINAGE AT EXTERIOR STAGES.
87. EXIST DRAINAGE AT EXTERIOR STAGES.
88. EXIST DRAINAGE AT EXTERIOR STAGES.
89. EXIST DRAINAGE AT EXTERIOR STAGES.
90. EXIST DRAINAGE AT EXTERIOR STAGES.
91. EXIST DRAINAGE AT EXTERIOR STAGES.
92. EXIST DRAINAGE AT EXTERIOR STAGES.
93. EXIST DRAINAGE AT EXTERIOR STAGES.
94. EXIST DRAINAGE AT EXTERIOR STAGES.
95. EXIST DRAINAGE AT EXTERIOR STAGES.
96. EXIST DRAINAGE AT EXTERIOR STAGES.
97. EXIST DRAINAGE AT EXTERIOR STAGES.
98. EXIST DRAINAGE AT EXTERIOR STAGES.
99. EXIST DRAINAGE AT EXTERIOR STAGES.
100. EXIST DRAINAGE AT EXTERIOR STAGES.

KEYNOTES

- [illegible]



SECOND FLOOR PLAN



FIRST FLOOR PLAN

SCALE: 1/8" = 1'-0"