

# Los Angeles Lakers Headquarters

2275 Mariposa  
El Segundo, California  
90245

Issued for ASI # 011 February 5th, 2016  
Plan Check No: G0015-15, G0019-15, P022-15, M0316-15, E0445-15,  
B0973-15, B1107-15, B1169-15, B1185-15, B1186-15

RA Project Number: 2014-015



CLIENT:  
**LAL Property, LLC,**  
a California Limited Liability Company

555 North Nash Street  
El Segundo, CA 90245  
TEL: (310) 426-6000  
Contact: Joseph B McCormack  
Jmccormack@la-lakers.com

PROJECT MANAGER :  
**Pica + Sullivan Architects, Ltd.**

9911 W. Pico Blvd.  
Suite 102  
Los Angeles, CA 90035  
TEL: (323) 653-7124  
Contact: V. Joseph Pica  
Joe@picasullivan.com

LAND USE ATTORNEY :  
**Armbruster Goldsmith and  
Delvac, LLP Attorney**

11611 San Vicente Blvd.  
Suite 900  
Los Angeles, CA 90049  
TEL: (310) 209-8800  
Contact: Dale Goldsmith  
Dale@AG-LandUse.com

PARKING CONSULTANT  
**Hirsch Green Parking Consultants**

13333 Venture Blvd.  
Suite 204  
Sherman Oaks, CA 91423  
TEL: (818) 325-0530  
Contact: Ron Hirsch  
Ron@hdttraffic.com

TITLE 24 CONSULTANT / LEED CONSULTANT  
**VCA Green**

2200 West Orangewood Avenue, Suite 155  
Orange, California 92668  
TEL: (714) 363-4700  
FAX: (714) 363-4747  
Contact: Moe Fakih  
mfakih@vca-green.com

ARCHITECT:  
**ROSSETTI**

160 WEST FORT, SUITE 400  
DETROIT, MICHIGAN, 48226  
TEL: (313) 463-5151  
FAX: (313) 463-5160  
Contact: Jon Wakeman  
Jwakeman@ROSSETTI.com

CIVIL ENGINEER  
**KPFF Consulting Engineers**

6080 Center Drive  
Suite 700  
Los Angeles, CA 90045  
TEL: (310) 665-2800  
FAX: (310) 665-9075  
Contact: Charlotte Chan  
Charlotte.Chan@kpff.com

LANDSCAPE ARCHITECT  
**AHBE Landscape Architects**

617 West 7th Street  
Suite 304  
Los Angeles, CA 90017  
TEL: (213) 694-3800  
FAX: (213) 694-3801  
Contact: Brian Mitchell  
Bmitchell@ahba.com

STRUCTURAL ENGINEER  
**John Labib & Associates**

319 Main Street  
El Segundo, CA 90245  
TEL: (213) 239-9600  
FAX: (213) 239-9699  
Contact: Peter Behnam  
peter.behnam@labibse.com

FIRE / LIFE SAFETY CONSULTANT  
**FP&C Consultants**

3770 Broadway  
Kansas City, MO 64111  
TEL: (816) 931-3377  
FAX: (816) 931-3378  
Contact: Jeffrey Bresette  
Jbresette@fpc-consultants.com

FIRE / LIFE SAFETY CONSULTANT  
**The Bigelow Co., Inc.**

6501 E Commerce Ave Suite 120  
Kansas City, MO 64120  
TEL: (816) 483-5553  
FAX: (816) 483-5510  
Contact: Tracy Taraski  
TracyTaraski@bigelowcompanies.com

ASSOCIATE ARCHITECT:  
**Perkins & Will**

617 West 7th Street  
Suite 1200  
Los Angeles, CA 90017  
TEL: (213) 270-8400  
FAX: (213) 270-8410  
Contact: Bill Wagner  
Bill.Wagner@perkinswill.com

MECH/ELEC/PLUMB & FIRE PROTECTION  
**Smith Seckman Reid, Inc.**

2995 Sidco Drive  
Nashville, TN 37204  
TEL: (615) 383-1113  
FAX: (615) 386-8469  
Contact: Carl Kickert  
ckickert@ssri-inc.com

ARCHITECTURAL LIGHTING  
**Kaplan Gehring McCarrol  
Architectural Lighting**

270 Coral Circle  
El Segundo, CA 90245  
TEL: (310) 552-2191  
Contact: John Martin  
jmartin@kgmlighting.com

ACOUSTICAL/AUDIO VISUAL/SECURITY CONSULTANT  
**WJHW, Inc.**

4801 Spring Valley Road, Suite 113  
Dallas, TX 75244  
TEL: (972) 934-3700  
FAX: (972) 934-3720  
Contact: Todd Sample  
TSample@wjhw.com

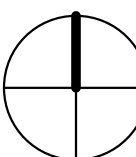
WATERPROOFING & METHANE CONSULTANT  
**Tera-Petra**

700 S. Flower Street, Suite 2580  
Los Angeles, CA 90017  
TEL: (213) 458-0494  
FAX: (213) 788-3564  
Contact: Justin Conaway  
Justin@terra-petra.com

CONSTRUCTION MANAGER  
**Morley Builders**

3330 Ocean Blvd.  
Santa Monica, CA 90405  
TEL: (310) 399-1600  
Contact:  
Michele Prata  
mprata@morleybuilders.com  
Eric Cronin  
ecronin@morleybuilders.com



 **Location Map**  
Not to Scale

Sheet Title  
**Cover Sheet**

Project Number  
**2014-015**  
Sheet number

**G-000**



# Los Angeles Lakers Headquarters

2275 Mariposa  
El Segundo, California  
90245

Issued for Construction - ASI #010 January 22nd, 2016

Plan Check No: G0015-15, G0019-15, P022-15, M0316-15, E0445-15,  
B0973-15, B1107-15, B1169-15, B1185-15, B1186-15

RA Project Number: 2014-015

# ROSSETTI

ROSSETTI . ARCHITECTURE . INTERIORS . GRAPHICS . PLANNING  
160 WEST FORT, SUITE 400, DETROIT, MICHIGAN 48226  
Telephone. 313.463.5151 ROSSETTI.COM Fax. 313.463.5160

PERKINS+WILL



CLIENT:  
**LAL Property, LLC,**  
a California Limited Liability Company

555 North Nash Street  
El Segundo, CA 90245  
TEL: (310) 426-6000  
Contact: Joseph B McCormack  
Jmccormack@la-lakers.com

PROJECT MANAGER :  
**Pica + Sullivan Architects, Ltd.**

9911 W. Pico Blvd.  
Suite 102  
Los Angeles, CA 90035  
TEL: (323) 653-7124  
Contact: V. Joseph Pica  
Joe@picasullivan.com

LAND USE ATTORNEY :  
**Armbruster Goldsmith and  
Delvac, LLP Attorney**

11611 San Vicente Blvd.  
Suite 900  
Los Angeles, CA 90049  
TEL: (310) 209-8800  
Contact: Dale Goldsmith  
Dale@AG-LandUse.com

PARKING CONSULTANT  
**Hirsch Green Parking Consultants**

13333 Venture Blvd.  
Suite 204  
Sherman Oaks, CA 91423  
TEL: (818) 325-0530  
Contact: Ron Hirsch  
Ron@hdttraffic.com

TITLE 24 CONSULTANT / LEED CONSULTANT  
**VCA Green**

2200 West Orangewood Avenue, Suite 155  
Orange, California 92668  
TEL: (714) 363-4700  
FAX: (714) 363-4747  
Contact: Moe Fakih  
mfakih@vca-green.com

ARCHITECT:  
**ROSSETTI**  
160 WEST FORT, SUITE 400  
DETROIT, MICHIGAN, 48226  
TEL: (313) 463-5151  
FAX: (313) 463-5160  
Contact: Jon Wakeman  
Jwakeman@ROSSETTI.com

CIVIL ENGINEER  
**KPFF Consulting Engineers**

6080 Center Drive  
Suite 700  
Los Angeles, CA 90045  
TEL: (310) 665-2800  
FAX: (310) 665-9075  
Contact: Charlotte Chan  
Charlotte.Chan@kpff.com

LANDSCAPE ARCHITECT  
**AHBE Landscape Architects**

617 West 7th Street  
Suite 304  
Los Angeles, CA 90017  
TEL: (213) 694-3800  
FAX: (213) 694-3801  
Contact: Brian Mitchell  
Bmitchell@ahba.com

STRUCTURAL ENGINEER  
**John Labib & Associates**

319 Main Street  
El Segundo, CA 90245  
TEL: (213) 239-9600  
FAX: (213) 239-9699  
Contact: Peter Behnam  
peter.behnam@labibse.com

FIRE / LIFE SAFETY CONSULTANT  
**FP&C Consultants**

3770 Broadway  
Kansas City, MO 64111  
TEL: (816) 931-3373  
FAX: (816) 931-3378  
Contact: Jeffrey Bresette  
Jbresette@fpc-consultants.com

FIRE / LIFE SAFETY CONSULTANT  
**The Bigelow Co., Inc.**

6501 E Commerce Ave Suite 120  
Kansas City, MO 64120  
TEL: (816) 483-5533  
FAX: (816) 483-5510  
Contact: Tracy Taraski  
TracyTaraski@bigelowcompanies.com

ASSOCIATE ARCHITECT:  
**Perkins & Will**

617 West 7th Street  
Suite 1200  
Los Angeles, CA 90017  
TEL: (213) 270-8400  
FAX: (213) 270-8410  
Contact: Bill Wagner  
Bill.Wagner@perkinswill.com

MECH/ELEC/PLUMB & FIRE PROTECTION  
**Smith Seckman Reid, Inc.**

2995 Sidco Drive  
Nashville, TN 37204  
TEL: (615) 383-1113  
FAX: (615) 385-8469  
Contact: Carl Kickert  
ckickert@ssri-inc.com

ARCHITECTURAL LIGHTING  
**Kaplan Gehring McCarroll  
Architectural Lighting**

270 Coral Circle  
El Segundo, CA 90245  
TEL: (310) 552-2191  
Contact: John Martin  
jmartin@kgmlighting.com

ACOUSTICAL/AUDIO VISUAL/SECURITY CONSULTANT  
**WJHW, Inc.**

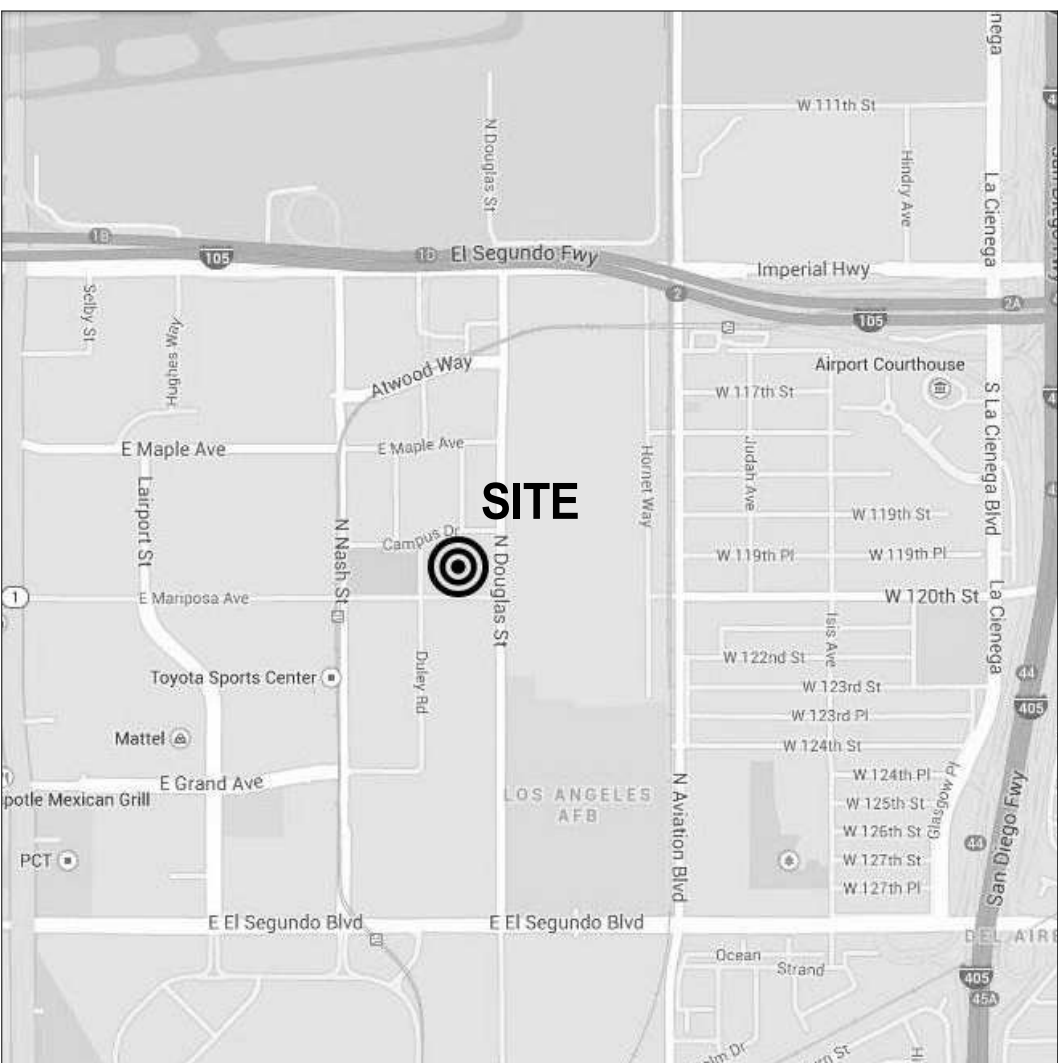
4801 Spring Valley Road, Suite 113  
Dallas, TX 75244  
TEL: (972) 934-3700  
FAX: (972) 934-3720  
Contact: Todd Sample  
TSample@wjhw.com

WATERPROOFING & METHANE CONSULTANT  
**Tera-Petra**

700 S. Flower Street, Suite 2580  
Los Angeles, CA 90017  
TEL: (213) 458-0494  
FAX: (213) 789-3564  
Contact: Justin Conaway  
Justin@terra-petra.com

CONSTRUCTION MANAGER  
**Morley Builders**

3330 Ocean Blvd.  
Santa Monica, CA 90405  
TEL: (310) 399-1600  
Contact:  
Michele Prata  
mprata@morleybuilders.com  
Eric Cronin  
ecronin@morleybuilders.com



Location Map  
Not to Scale

Sheet Title  
**Cover Sheet**

Project Number  
**2014-015**  
Sheet number

**G-000**

© 2014 ROSSETTI



01-GENERAL

G-000

Cover Sheet

G-001

Draw Sheet

G-002

General Information Sheet

G-003

GENERAL COORDINATION - LEVEL 1 EXTERIOR SLAB EDGE

G-003.1

GENERAL COORDINATION - LEVEL 2 AND ROOF

G-004

LEVEL 1 & 2 SLAB DEPRESSION PLANS

G-005

Mounting Heights & Clearances

G-005.1

Accessibility Requirements

02-Life Safety

LS-01a

LIFE SAFETY - LEVEL 01

LS-01b

LIFE SAFETY - LEVEL 01

LS-01c

LIFE SAFETY - LEVEL 01

LS-02

LIFE SAFETY - LEVEL 02

03-Civil

C-001

TIME SHEET

C-002

SURVEY (FOR REFERENCE ONLY)

C-110

DEMOLITION PLAN

C-120

EROSION CONTROL PLAN

C-130

ROUGH GRADING PLAN

C-131

ROUGH GRADING PROFILES

C-141

GRADING PLAN-NORTH

C-142

GRADING PLAN-SOUTH

C-151

UTILITY PLAN-NORTH

C-152

UTILITY PLAN-SOUTH

C-153

STORM DRAIN LINES

C-160

PAVING PLAN

C-170

FIRE ACCESS PLAN

C-500

DETAIL SHEET

C-501

DETAIL SHEET

C-502

Detail Sheet

04-Landscape

L-100

LANDSCAPE CONSTRUCTION LEGEND AND NOTES

L-101

LANDSCAPE PLAN

L-102

LANDSCAPE PLAN

L-131

LANDSCAPE ENLARGEMENT PLAN

L-132

LANDSCAPE CONSTRUCTION DETAILS

L-200

IRRIGATION LEGEND

L-201

IRRIGATION PLAN

L-202

IRRIGATION PLAN

L-251

IRRIGATION DETAILS

L-252

IRRIGATION DETAILS

L-253

IRRIGATION DETAILS

L-254

IRRIGATION NOTES

L-300

PLANTING LEGEND AND NOTES

L-301

LANDSCAPE PLANTING PLAN

L-302

LANDSCAPE PLANTING PLAN

L-351

LANDSCAPE PLANTING DETAILS

05-Structural

S-001

GENERAL NOTES

S-002

GENERAL NOTES

S-003

GENERAL NOTES

S-011

TYPICAL DETAILS

S-012

TYPICAL DETAILS

S-013

TYPICAL DETAILS

S-014

TYPICAL DETAILS

S-015

TYPICAL DETAILS

S-016

TYPICAL DETAILS

S-017

TYPICAL DETAILS

S-018

TYPICAL DETAILS

S-101

OVERALL PLAN - FOUNDATION / LEVEL 1 PLAN

S-102

OVERALL PLAN - LEVEL 2 PLAN

S-103

OVERALL PLAN - ROOF PLAN

S-111

FOUNDATION / LEVEL 1 PLAN - NORTH

S-112

FOUNDATION / LEVEL 1 PLAN - SOUTH

S-113

LEVEL 2 FRAMING PLAN - NORTH

S-114

LEVEL 2 FRAMING PLAN - SOUTH

S-115

LOWER ROOF FRAMING PLAN - NORTH

S-116

LOWER ROOF FRAMING PLAN - SOUTH

S-117

UPPER ROOF FRAMING PLAN

S-201

SITE WALL DETAILS

S-301

COLUMN & GRADE BEAM SCHEDULE AND DETAILS

S-301

COVERED PARKING FOUNDATION PLAN

S-302

COVERED PARKING ROOF FRAMING PLAN

S-401

MOMENT FRAME ELEVATIONS

S-402

MOMENT FRAME ELEVATIONS

S-403

MOMENT FRAME ELEVATIONS

S-404

MOMENT FRAME ELEVATIONS

S-511

MF SECTIONS AND DETAILS

S-521

MF QUALITY ASSURANCE NOTES

S-522

MF QUALITY ASSURANCE TABLE AND DETAILS

S-601

SECTIONS & DETAILS

S-611

MECHANICAL SCREEN ROOF ELEVATIONS & DETAILS

S-612

MECHANICAL SCREEN ROOF ELEVATIONS & DETAILS

S-613

MECHANICAL SCREEN ROOF ELEV & DETAILS

S-701

STAIR PLANS, SECTIONS, & DETAILS

S-702

SECTIONS & DETAILS

06-Architectural

A-100

Site Plan

A-101

Overall Plan - Level 01

A-101.1

North (Envelope) - Level 01

A-101.2

South (Envelope) - Level 01

A-102

Overall Plan - Level 02

A-102.1

North (Envelope) - Level 02

A-102.2

South (Envelope) - Level 02

A-103

Overall Plan - Roof

A-103.1

Overall Plan - Level 02

A-111

Ground Floor - North

A-112

Ground Floor - South

A-121

Upper Floor - North

A-122

Upper Floor - South

A-200

Overall Building Elevations

A-201

Enlarged East Elevation

A-202

Enlarged South & North Elevation

A-203

Enlarged West Elevation

A-301

Overall Building Sections

A-302

Overall Building Sections

A-311

Sections & Details at Player Entrance

A-311.1

Sections & Details at Player Entrance

A-311.2

Sections & Details at Player Entrance

A-312

Section & Details at Sponsor Sign

A-312.1

Section & Details at Sponsor Sign

A-313

Section & Details at Sand Pit

A-313.1

Section & Details at Sand Pit

A-321

Section & Details at Storage & Loading

A-321.1

Section & Details at Storage & Loading

A-331

Section & Details at Event Entrance

A-332

Section & Details at Event Entrance Ticket Windows

A-332.1

Section & Details at Event Entrance Ticket Windows

A-333

Section & Details at "LAKER" Sign

A-341

Section & Details at Visitor Staff Entry

A-341.1

Section & Details at Visitor Staff Entry

A-351

Section & Details at Gallery

A-352

Section & Details at Visitor Staff Entry (Upper)

A-353

Section & Details at North Wall

A-353.1

Section & Details at North Wall

A-353.2

Section & Details at North Wall

A-361

Section & Details at Courtyard

A-362

Section & Details at Courtyard

A-363

Section & Details at Courtyard

A-381

SECTION & DETAILS AT ROOF

A-382

Section & Details at Roof

A-383

Section & Details at Roof

A-384

Section & Details at Roof

A-385

Section & Details at Roof

A-390

Screen Wall, Fencing, & Signage Plan

A-391

Section & Details at Covered Parking

A-392

Section & Details at Covered Parking

A-392.1

Section & Details at Covered Parking

A-393

Entry Gates & Guard House

06-Architectural (cont.)

A-401

Enlarged Plan at Sponsor's Gallery

A-402

Enlarged Plan at Lakers Lockers Suite

A-402.1

Enlarged Elevations at Lockers Suite

A-402.2

Enlarged Elevations at Locker Lounge

A-403

Enlarged Plan at Lakers Shower and Training Treatment

A-403.1

Enlarged Elevations at Lakers Shower and Hydro

A-403.2

Enlarged Elevations at Lakers Shower / Toilet / Hallway

A-404

Enlarged Plan at Weight Training

A-405

Enlarged Plan & Elevations at D-Enders Lockers

A-406

Enlarged Plan at Official's Lockers, Men's/Women's Toilet

A-406.1

Enlarged Elevations at Men's/Women's Room

A-421

Enlarged Plan at President Office

A-421.1

Enlarged Elevations at President Office

A-422

Enlarged Plan at Conference Room

A-422.1

Enlarged Elevations at Conference Room & Restrooms

A-423

Enlarged Plan at Conference Room

A-423.1

Enlarged Elevations at Conference Room

A-424

Enlarged Plan / Elevations at Headquarters Suite

A-441

Enlarged Plan & Sections at Stair (South & East)

A-441.1

Enlarged Plan & Sections at West Stair (Lobby)

A-441.2

ENLARGED COURT ELEVATION AT WEST STAIR (LOBBY)

A-442

ENLARGED PLAN & SECTION AT STAIR (SOUTH & EAST)

A-442.1

Enlarged Plan & Sections at Stair (Lobby)

A-442.2

STAIR DETAILS

A-442.3

STAIR DETAILS

A-444

Enlarged Plan & Sections at Elevator

A-444.1

Elevator Details

A-450

Door Details

A-450.1

Window Details

A-451

Casework Details

A-452

Casework Details

A-453

Lobby Reception Desk

A-453

Transition Details

A-454

Partition Details

A-454.1

PARTITION FRAMING DETAILS

A-454.2

Partition Details

A-454.3

Partition Details

A-455

Ceiling Detail

A-456

Star Details

A-457

Reflected Ceiling Detail - Gypsum Board

A-458

INTERIOR DETAILS

A-501

Enlarged Court Level Plan

A-511

Enlarged Court Elevation

A-512

Enlarged Court Elevation

A-513

Enlarged Court Elevation

A-514

Enlarged Court Elevation

A-602

Room Finish Legend

A-611

GROUND FLOOR FINISH PLAN NORTH

A-612

GROUND FLOOR FINISH PLAN SOUTH

A-621

UPPER FLOOR FINISH PLAN NORTH

A-622

UPPER FLOOR FINISH PLAN SOUTH

A-631

Wall Partitions

A-641

Door Schedule - Exterior Doors

A-642

Door Schedule - Interior LEVEL 1

A-643

DOOR SCHEDULE - INTERIOR LEVEL 02

A-701.1

North (Envelope) - Level 01 Ribbon Window & Soffit

A-701.2

South (Envelope) - Level 01 Ribbon Window & Soffit

A-711

RCF Ground Floor - North

A-712

RCF Ground Floor - South

A-721

RCF Upper Floor - North

A-722

RCF Upper Floor - South

A-811

Furniture Plan Ground Floor - North

A-812

Furniture Plan Ground Floor - South

A-821

Furniture Plan Upper Floor - North

A-822

Furniture Plan Upper Floor - South

07-Fire Protection

FP-000

FIRE PROTECTION SCHEDULES, NOTES, AND LEGENDS

FP-111

FIRE PROTECTION GROUND LEVEL PLAN - NORTH

FP-112

FIRE PROTECTION GROUND LEVEL PLAN - SOUTH

FP-121

FIRE PROTECTION UPPER LEVEL PLAN - NORTH

FP-122

FIRE PROTECTION UPPER LEVEL PLAN - SOUTH

FP-501

FIRE PROTECTION DETAILS

FP-502

FIRE PROTECTION DETAILS

08-Plumbing

P-000

PLUMBING SCHEDULES, NOTES, AND LEGENDS

P-001

Plumbing Schedules

P-201

PLUMBING UNDERGROUND PLAN - NORTH

P-202

PLUMBING UNDERGROUND PLAN - SOUTH

P-211

PLUMBING GROUND LEVEL PLAN - NORTH

P-212

PLUMBING GROUND LEVEL PLAN - SOUTH

P-221

PLUMBING UPPER LEVEL PLAN - NORTH

P-222

PLUMBING UPPER LEVEL PLAN - SOUTH

P-231

PLUMBING ROOF PLAN - NORTH

P-232

PLUMBING ROOF PLAN - SOUTH

P-401

ENLARGED KITCHEN PLAN

P-402

ENLARGED HYDROTHERAPY PLANS

P-501

PLUMBING DETAILS

P-502

PLUMBING DETAILS

P-603

PLUMBING DETAILS

P-601

PLUMBING RISER DIAGRAMS

P-602

PLUMBING RISER DIAGRAMS

09-Mechanical

M-001

HVAC LEGENDS, NOTES AND INDEX

M-002

HVAC SCHEDULES

M-003

HVAC SCHEDULES

M-004

HVAC SCHEDULES

M-005

HVAC AIR BALANCE SCHEDULES

M-006

HVAC LOADS

M-111

HVAC GROUND LEVEL PLAN - NORTH

M-112

HVAC GROUND LEVEL PLAN - SOUTH

M-121

HVAC UPPER LEVEL PLAN - NORTH

M-122

HVAC UPPER LEVEL PLAN - SOUTH

M-131

HVAC ROOF PLAN - NORTH

M-132

HVAC ROOF PLAN - SOUTH

M-211

HVAC PIPING GROUND LEVEL 1 NORTH

M-212

HVAC PIPING GROUND LEVEL 1 SOUTH

M-221

HVAC PIPING GROUND LEVEL 2 NORTH

M-222

HVAC PIPING GROUND LEVEL 2 SOUTH

M-301

HVAC ENLARGED PLANS

M-302

KITCHEN PLANS - FOR REFERENCE ONLY

M-401

HVAC DETAILS

M-402

HVAC DETAILS

M-403

HVAC DETAILS

M-404

HVAC DETAILS

M-501

HVAC SECTIONS

M-601

HVAC CONTROLS

M-602

HVAC CONTROLS

M-603

HVAC CONTROLS

M-604

HVAC CONTROLS

M-605

HVAC CONTROLS

M-606

HVAC CONTROLS

M-607

HVAC CONTROLS

M-608

HVAC CONTROLS

M-701

HVAC COMPLIANCE DOCUMENTS

10-Electrical

E-001

ELECTRICAL LEGENDS, SHEET INDEX

E-002

ELECTRICAL SCHEDULES

E-003

Electrical Schedules

E-004

Electrical Schedules

E-005

Electrical Schedules

E-100

ELECTRICAL SITE PLAN

E-101

PHOTOMETRIC PLAN

E-111

LIGHTING GROUND LEVEL PLAN - NORTH

E-112

LIGHTING GROUND LEVEL PLAN - SOUTH

E-121

LIGHTING UPPER LEVEL PLAN - NORTH

E-122

LIGHTING UPPER LEVEL PLAN - SOUTH

E-131

LIGHTING PLAN - ROOF LOWER NORTH

E-132

LIGHTING PLAN - ROOF LOWER SOUTH

E-211

POWER GROUND LEVEL PLAN - NORTH

E-212

POWER GROUND LEVEL PLAN - SOUTH

E-221

POWER UPPER LEVEL PLAN - NORTH

E-222

POWER UPPER LEVEL PLAN - SOUTH

E-231

POWER ROOF PLAN - NORTH

E-232

POWER ROOF PLAN - SOUTH

E-401

ELECTRICAL PLAN - COVERED PARKING

E-402

ELECTRICAL LARGE SCALE PLAN

10-Electrical

E-001

ELECTRICAL LEGENDS, SHEET INDEX

E-002

ELECTRICAL SCHEDULES

E-003

Electrical Schedules

E-004

Electrical Schedules

E-005

Electrical Schedules

E-100

ELECTRICAL SITE PLAN

E-101

PHOTOMETRIC PLAN

E-111

LIGHTING GROUND LEVEL PLAN - NORTH

E-112

LIGHTING GROUND LEVEL PLAN - SOUTH

E-121

LIGHTING UPPER LEVEL PLAN - NORTH

E-122

LIGHTING UPPER LEVEL PLAN - SOUTH

E-131

LIGHTING PLAN - ROOF LOWER NORTH

E-132

LIGHTING PLAN - ROOF LOWER SOUTH

E-211

POWER GROUND LEVEL PLAN - NORTH

E-212

POWER GROUND LEVEL PLAN - SOUTH

E-221

POWER UPPER LEVEL PLAN - NORTH

E-222

POWER UPPER LEVEL PLAN - SOUTH

E-231

POWER ROOF PLAN - NORTH

E-232

POWER ROOF PLAN - SOUTH

E-401

ELECTRICAL PLAN - COVERED PARKING

E-402

ELECTRICAL LARGE SCALE PLAN

10-Electrical

E-001

ELECTRICAL LEGENDS, SHEET INDEX

E-002

ELECTRICAL SCHEDULES

E-003

Electrical Schedules

E-004

Electrical Schedules

E-005

Electrical Schedules

E-100

ELECTRICAL SITE PLAN

E-101

PHOTOMETRIC PLAN

E-111

LIGHTING GROUND LEVEL PLAN - NORTH

E-112

LIGHTING GROUND LEVEL PLAN - SOUTH

E-121

LIGHTING UPPER LEVEL PLAN - NORTH

E-122

LIGHTING UPPER LEVEL PLAN - SOUTH

E-131

LIGHTING PLAN - ROOF LOWER NORTH

E-132

LIGHTING PLAN - ROOF LOWER SOUTH

E-211

POWER GROUND LEVEL PLAN - NORTH

E-212

POWER GROUND LEVEL PLAN - SOUTH

E-221

POWER UPPER LEVEL PLAN - NORTH

E-222

POWER UPPER LEVEL PLAN - SOUTH

E-231

POWER ROOF PLAN - NORTH

E-232

POWER ROOF PLAN - SOUTH

E-401

ELECTRICAL PLAN - COVERED PARKING

E-402

ELECTRICAL LARGE SCALE PLAN

10-Electrical

E-001

ELECTRICAL LEGENDS, SHEET INDEX

E-002

ELECTRICAL SCHEDULES

E-003

Electrical Schedules

E-004

Electrical Schedules

E-005

Electrical Schedules

E-100

ELECTRICAL SITE PLAN

E-101

PHOTOMETRIC PLAN

E-111

LIGHTING GROUND LEVEL PLAN - NORTH

E-112

LIGHTING GROUND LEVEL PLAN - SOUTH

E-121

LIGHTING UPPER LEVEL PLAN - NORTH

E-122

LIGHTING UPPER LEVEL PLAN - SOUTH

E-131

LIGHTING PLAN - ROOF LOWER NORTH

E-132

LIGHTING PLAN - ROOF LOWER SOUTH

E-211

POWER GROUND LEVEL PLAN - NORTH

E-212

POWER GROUND LEVEL PLAN - SOUTH

E-221

POWER UPPER LEVEL PLAN - NORTH

E-222

POWER UPPER LEVEL PLAN - SOUTH

E-231

POWER ROOF PLAN - NORTH

E-232

POWER ROOF PLAN - SOUTH

E-401

ELECTRICAL PLAN - COVERED PARKING

E-402

ELECTRICAL LARGE SCALE PLAN

10-Electrical

E-001

ELECTRICAL LEGENDS, SHEET INDEX

E-002

ELECTRICAL SCHEDULES

E-003

Electrical Schedules

E-004

Electrical Schedules

E-005

Electrical Schedules

E-100

ELECTRICAL SITE PLAN

E-101

PHOTOMETRIC PLAN

E-111

LIGHTING GROUND LEVEL PLAN - NORTH

E-112

LIGHTING GROUND LEVEL PLAN - SOUTH

E-121

LIGHTING UPPER LEVEL PLAN - NORTH

E-122

LIGHTING UPPER LEVEL PLAN - SOUTH

E-131

LIGHTING PLAN - ROOF LOWER NORTH

E-132

LIGHTING PLAN - ROOF LOWER SOUTH

E-211

POWER GROUND LEVEL PLAN - NORTH

E-212

POWER GROUND LEVEL PLAN - SOUTH

E-221

POWER UPPER LEVEL PLAN - NORTH

E-222

POWER UPPER LEVEL PLAN - SOUTH

E-231

POWER ROOF PLAN - NORTH

E-232

POWER ROOF PLAN - SOUTH

E-401

ELECTRICAL PLAN - COVERED PARKING

E-402

ELECTRICAL LARGE SCALE PLAN

10-Electrical

E-001

ELECTRICAL LEGENDS, SHEET INDEX

E-002

ELECTRICAL SCHEDULES

E-003

Electrical Schedules

E-004

Electrical Schedules

E-005

Electrical Schedules

E-100

ELECTRICAL SITE PLAN

E-101

PHOTOMETRIC PLAN

E-111

LIGHTING GROUND LEVEL PLAN - NORTH

E-112

LIGHTING GROUND LEVEL PLAN - SOUTH

E-121

LIGHTING UPPER LEVEL PLAN - NORTH

E-122

LIGHTING UPPER LEVEL PLAN - SOUTH

E-131

LIGHTING PLAN - ROOF LOWER NORTH

E-132

LIGHTING PLAN - ROOF LOWER SOUTH

E-211

POWER GROUND LEVEL PLAN - NORTH

E-212

POWER GROUND LEVEL PLAN - SOUTH

E-221

POWER UPPER LEVEL PLAN - NORTH

E-222

POWER UPPER LEVEL PLAN - SOUTH

E-231

POWER ROOF PLAN - NORTH

E-232

POWER ROOF PLAN - SOUTH

E-401

ELECTRICAL PLAN - COVERED PARKING

E-402

ELECTRICAL LARGE SCALE PLAN

10-Electrical

E-001

ELECTRICAL LEGENDS, SHEET INDEX

E-002

ELECTRICAL SCHEDULES

E-003

Electrical Schedules

E-004

Electrical Schedules

E-005

Electrical Schedules

E-100

ELECTRICAL SITE PLAN

E-101

PHOTOMETRIC PLAN

E-111

LIGHTING GROUND LEVEL PLAN - NORTH

E-112

LIGHTING GROUND LEVEL PLAN - SOUTH

E-121

LIGHTING UPPER LEVEL PLAN - NORTH

E-122

LIGHTING UPPER LEVEL PLAN - SOUTH

E-131

LIGHTING PLAN - ROOF LOWER NORTH

E-132

LIGHTING PLAN - ROOF LOWER SOUTH

E-211

POWER GROUND LEVEL PLAN - NORTH

E-212

POWER GROUND LEVEL PLAN - SOUTH

E-221

POWER UPPER LEVEL PLAN - NORTH

E-222

POWER UPPER LEVEL PLAN - SOUTH

E-231

POWER ROOF PLAN - NORTH

E-232

POWER ROOF PLAN - SOUTH

E-401

ELECTRICAL PLAN - COVERED PARKING

E-402

ELECTRICAL LARGE SCALE PLAN

10-Electrical

E-001

ELECTRICAL LEGENDS, SHEET INDEX

E-002

ELECTRICAL SCHEDULES

E-003

Electrical Schedules

E-004

Electrical Schedules

E-005

Electrical Schedules

E-100

ELECTRICAL SITE PLAN

E-101

PHOTOMETRIC PLAN

E-111

LIGHTING GROUND LEVEL PLAN - NORTH

E-112

LIGHTING GROUND LEVEL PLAN - SOUTH

E-121

LIGHTING UPPER LEVEL PLAN - NORTH

E-122

LIGHTING UPPER LEVEL PLAN - SOUTH

E-131

LIGHTING PLAN - ROOF LOWER NORTH

E-132

LIGHTING PLAN - ROOF LOWER SOUTH

E-211

POWER GROUND LEVEL PLAN - NORTH

E-212

POWER GROUND LEVEL PLAN - SOUTH

E-221

POWER UPPER LEVEL PLAN - NORTH

E-222

POWER UPPER LEVEL PLAN - SOUTH

E-231

POWER ROOF PLAN - NORTH

E-232

POWER ROOF PLAN - SOUTH

E-401

ELECTRICAL PLAN - COVERED PARKING

E-402

ELECTRICAL LARGE SCALE PLAN

10-Electrical

E-001

ELECTRICAL LEGENDS, SHEET INDEX

E-002

ELECTRICAL SCHEDULES

E-003

Electrical Schedules

E-004

Electrical Schedules

E-005

Electrical Schedules

E-100

ELECTRICAL SITE PLAN

E-101

PHOTOMETRIC PLAN

E-111

LIGHTING GROUND LEVEL PLAN - NORTH

E-112

LIGHTING GROUND LEVEL PLAN - SOUTH

E-121

LIGHTING UPPER LEVEL PLAN - NORTH

E-122

LIGHTING UPPER LEVEL PLAN - SOUTH

E-131

LIGHTING PLAN - ROOF LOWER NORTH

E-132

LIGHTING PLAN - ROOF LOWER SOUTH

E-211

POWER GROUND LEVEL PLAN - NORTH

E-212

POWER GROUND LEVEL PLAN - SOUTH

E-221

POWER UPPER LEVEL PLAN - NORTH

E-222

POWER UPPER LEVEL PLAN - SOUTH

E-231

POWER ROOF PLAN - NORTH

E-232

POWER ROOF PLAN - SOUTH

E-401

ELECTRICAL PLAN - COVERED PARKING

E-402

ELECTRICAL LARGE SCALE PLAN

10-Electrical

E-001

ELECTRICAL LEGENDS, SHEET INDEX

E-002

ELECTRICAL SCHEDULES

E-003

Electrical Schedules

E-004

Electrical Schedules

E-005

Electrical Schedules

E-100

ELECTRICAL SITE PLAN

E-101

PHOTOMETRIC PLAN

E-111

LIGHTING GROUND LEVEL PLAN - NORTH

E-112

LIGHTING GROUND LEVEL PLAN - SOUTH

E-121

LIGHTING UPPER LEVEL PLAN - NORTH

E-122

LIGHTING UPPER LEVEL PLAN - SOUTH

E-131

LIGHTING PLAN - ROOF LOWER NORTH

E-132

LIGHTING PLAN - ROOF LOWER SOUTH

E-211

POWER GROUND LEVEL PLAN - NORTH

E-212

POWER GROUND LEVEL PLAN - SOUTH

E-221

POWER UPPER LEVEL PLAN - NORTH

E-222

POWER UPPER LEVEL PLAN - SOUTH

E-231

POWER ROOF PLAN - NORTH

E-232

POWER ROOF PLAN - SOUTH

E-401

ELECTRICAL PLAN - COVERED PARKING

E-402

ELECTRICAL LARGE SCALE PLAN

10-Electrical

E-001

ELECTRICAL LEGENDS, SHEET INDEX

E-002

ELECTRICAL SCHEDULES

E-003

Electrical Schedules

E-004

Electrical Schedules

E-005

Electrical Schedules

E-100

ELECTRICAL SITE PLAN

E-101

PHOTOMETRIC PLAN

E-111

LIGHTING GROUND LEVEL PLAN - NORTH

E-112

LIGHTING GROUND LEVEL PLAN - SOUTH

E-121

LIGHTING UPPER LEVEL PLAN - NORTH

E-122

LIGHTING UPPER LEVEL PLAN - SOUTH

E-131

LIGHTING PLAN - ROOF LOWER NORTH

E-132

LIGHTING PLAN - ROOF LOWER SOUTH

E-211

POWER GROUND LEVEL PLAN - NORTH

E-212

POWER GROUND LEVEL PLAN - SOUTH

E-221

POWER UPPER LEVEL PLAN - NORTH

E-222

POWER UPPER LEVEL PLAN - SOUTH

E-231

POWER ROOF PLAN - NORTH

E-232

POWER ROOF







## Drawing Symbols Reference Legend

Notes

Symbol

Description

1

A

COLUMN GRID LINES

1

A9

DETAIL NUMBER

1

A-999

DRAWINGS NUMBER

1

A10

DETAIL NUMBER

1

A10

DRAWINGS NUMBER

1

A101

SIMILAR OR OPPOSITE HAND (O.H.)

1

A101

DETAIL NUMBER

1

A101

DRAWING NUMBER

1

A9

DETAIL NUMBER

1

A-999

DRAWINGS NUMBER

1

A101

ROOM NUMBER

1

A101

WORKING POINT AND/OR ELEVATION MARK

1

A101

WALL TYPE

1

A

EQUIPMENT TYPE

1

204

DOOR NUMBER

1

10800.P

KEYED NOTE

1

99

Detail Number

1

A-100

Sheet Where Drawn

1

A-100

Drawing Title

1

A-100

Title Lower

1

A-100

SCALE: 1 1/2" = 1'-0"

1

A-100

Drawing Where Referenced

1

A-100

Scale

1

A-100

DRAWING TITLE & REFERENCE INFORMATION

## Abbreviations

|            |                                 |           |                                   |
|------------|---------------------------------|-----------|-----------------------------------|
| & # @      | AND ANGLE AT CENTERLINE         | Ø # (E)   | DIAMETER POUND OR NUMBER EXISTING |
| AA         | ANODIZED ALUMINUM               | H.B.      | HOSE BIBB                         |
| ACCES.     | ACCESS                          | H.C.      | HOLLOW CORE                       |
| ACOUS.     | ACOUSTICAL                      | HDWD      | HARDWOOD                          |
| A.D.       | AREA DRAIN                      | HDWE      | HOLLOW METAL                      |
| ADJ.       | ADJUSTABLE                      | HM        | HORIZONTAL                        |
| A.F.F.     | ABOVE FINISHED FLOOR            | HR        | HOUR                              |
| AGGR.      | AGGREGATE                       | HGT       | HEIGHT                            |
| AL         | ALUMINUM                        | ID        | INSIDE DIAMETER                   |
| APPROX.    | APPROXIMATE                     | INSUL     | INSULATION                        |
| ARCH.      | ARCHITECTURAL                   | INTER.    | INTERIOR                          |
| ASB.       | ASBESTOS                        | JAN       | JANITOR                           |
| ASPH.      | ASPHALT                         | JC        | JANITOR'S CLOSET                  |
| BD.        | BOARD                           | KIT       | KITCHEN                           |
| BITUM.     | BITUMINOUS                      | LAB       | LABORATORY                        |
| BLK.       | BLOCKING                        | LAM       | LAMINATE                          |
| BM.        | BEAM                            | LAV       | LAVATORY                          |
| BOT.       | BOTTOM                          | LXR       | LOCKER                            |
| CAB.       | CABINET                         | LT        | LIGHT                             |
| C.B.       | CATCH BASIN                     | MAX       | MAXIMUM                           |
| CEM.       | CEMENT                          | MECH.     | MECHANICAL                        |
| CER.       | CERAMIC                         | MEMB.     | MEMBRANE                          |
| C.I.       | CAST IRON                       | MTL       | METAL                             |
| CL.G.      | CONTROL JOINT                   | MFR.      | MANUFACTURER                      |
| CLKG.      | CAULKING                        | MH        | MANHOLE                           |
| CLF.       | CLEAR                           | MIN.      | MINIMUM                           |
| C.O.       | CASED OPENING                   | MIR.      | MIRROR                            |
| COL.       | COLUMN                          | MISC.     | MISCELLANEOUS                     |
| CONC.      | CONCRETE                        | M.O.      | MASONRY OPENING                   |
| CONN.      | CONNECTION                      | MTD.      | MOUNTED                           |
| CONSTR.    | CONSTRUCTION                    | MUL.      | MULLION                           |
| CONT.      | CONTINUOUS                      | N         | NORTH                             |
| CORR.      | CORRIDOR                        | NT        | NOT IN CONTRACT                   |
| CTSK.      | COUNTER SUNK                    | NO        | NUMBER                            |
|            |                                 | NOM       | NOMINAL                           |
|            |                                 | NTS       | NOT TO SCALE                      |
| DBL        | DOUBLE                          | OA        | OVERALL                           |
| DEPT.      | DEPARTMENT                      | OBS       | OBSOLETE                          |
| D.F.       | DETAILED                        | ON C      | ON CENTER                         |
| DIA.       | DIAMETER                        | OD        | OUTSIDE DIAMETER                  |
| DIM.       | DIMENSION                       | OF CI     | OWNER FURNISHED CONTRACTOR        |
| DISP.      | DISPENSER                       | INSTALLED | OFFICE                            |
| DSA        | DEPT. OF STATE ARCHITECT        | OPC       | OPPOSITE                          |
| DOWN       | DOWN                            | OPG       | OWNER FURNISHED                   |
| D.O.       | DOOR OPENING                    | OPP       | OWNER INSTALLED                   |
| DR.        | DOOR                            | OF CI     |                                   |
| DWR.       | DRAWER                          |           |                                   |
| D.S.       | DOWN SPOUT                      |           |                                   |
| DSP        | DRY STAND PIPE                  |           |                                   |
| DWG.       | DRAWING                         |           |                                   |
| E          | EAST                            | PRCST     | PRECAST                           |
| EA         | EACH                            | PL        | PLATE                             |
| EC         | EXPOSED CONSTRUCTION            | PLAM      | PLASTER LAMINATE                  |
| EC-P       | EXPOSED CONSTRUCTION            | PT        | POINT                             |
| E.J.       | EXPANSION JOINT                 | PLY       | PLYWOOD                           |
| ELEC.      | ELECTRICAL                      | PR        | PAIR                              |
| ELEV.      | ELEVATOR                        | RO        | ROUGH OPENING                     |
| EMER.      | EMERGENCY                       | RD        | ROOF DRAIN                        |
| ENCL.      | ENCLOSURE                       | RCP       | REFLECTED CEILING                 |
| E.O.S./EOS | EDGE OF SLAB                    | PLAN      | REQUIRED                          |
| E.O.D./EOD | EDGE OF DECK                    | ROD       |                                   |
| EP         | ELECTRICAL PANEL                |           |                                   |
| EQ         | EQUAL                           |           |                                   |
| EQUIP      | EQUIPMENT                       |           |                                   |
| EW         | ELECTRIC WATER COOLER           |           |                                   |
| EXIST.     | EXISTING                        |           |                                   |
| EXT.       | EXTERIOR                        |           |                                   |
| FA         | FIRE ALARM                      |           |                                   |
| FB         | FLAT BAR                        |           |                                   |
| FD         | FLOOR DRAIN                     |           |                                   |
| FON        | FOUNDATION                      |           |                                   |
| FE         | FIRE EXTINGUISHER               |           |                                   |
| FEC        | FIRE EXTINGUISHER CABINET       |           |                                   |
| FHC        | FIRE HOSE CABINET               |           |                                   |
| FIN        | FINISH                          |           |                                   |
| FLASH      | FLASHING                        |           |                                   |
| FLOOR      | FLOURESCENT                     |           |                                   |
| FOC        | FACE OF CONCRETE                |           |                                   |
| FOF        | FACE OF FINISH                  |           |                                   |
| FOS        | FACE OF STUDS                   |           |                                   |
| FPR        | FIBERPROOF TREATED              |           |                                   |
| FRT        | FULL SIZE                       |           |                                   |
| FT.        | FOOT OR FEET                    |           |                                   |
| FTG.       | FOOTING                         |           |                                   |
| FUR        | FURRING                         |           |                                   |
| FUT.       | FUTURE                          |           |                                   |
| GA.        | GALV.                           |           |                                   |
| GALV.      | GALVANIZED                      |           |                                   |
| G.B.       | GRAB BAR                        |           |                                   |
| GFRIC.     | GLASS FIBER REINFORCED CONCRETE |           |                                   |
| GL.        | GLASS                           |           |                                   |
| GND        | GROUND                          |           |                                   |
| GR.        | GRADE                           |           |                                   |
| GYP.       | GYPSPUM                         |           |                                   |
| H.B.       | HOSE BIBB                       |           |                                   |
| H.C.       | HOLLOW CORE                     |           |                                   |
| HDWD       | HARDWOOD                        |           |                                   |
| HDWE       | HOLLOW METAL                    |           |                                   |
| HM         | HORIZONTAL                      |           |                                   |
| HORIZ.     | HORIZONTAL                      |           |                                   |
| HR         | HOUR                            |           |                                   |
| HGT        | HEIGHT                          |           |                                   |
| GA.        | GALV.                           |           |                                   |
| GALV.      | GALVANIZED                      |           |                                   |
| G.B.       | GRAB BAR                        |           |                                   |
| GFRIC.     | GLASS FIBER REINFORCED CONCRETE |           |                                   |
| GL.        | GLASS                           |           |                                   |
| GND        | GROUND                          |           |                                   |
| GR.        | GRADE                           |           |                                   |
| GYP.       | GYPSPUM                         |           |                                   |

## Material Symbols

|       |             |                     |          |                                 |             |                          |               |                        |                  |                     |                  |                 |                         |                       |              |
|-------|-------------|---------------------|----------|---------------------------------|-------------|--------------------------|---------------|------------------------|------------------|---------------------|------------------|-----------------|-------------------------|-----------------------|--------------|
| EARTH | POROUS FILL | SAND OR GRAVEL FILL | CONCRETE | CONCRETE MASONRY UNITS (C.M.U.) | FINISH WOOD | CONTINUOUS WOOD BLOCKING | WOOD BLOCKING | PLYWOOD OR WOOD VENEER | STRUCTURAL STEEL | MISCELLANEOUS METAL | RIGID INSULATION | BATT INSULATION | SEALANT WITH BACKER ROD | SPRAY ON FIREPROOFING | GYPSUM BOARD |
|-------|-------------|---------------------|----------|---------------------------------|-------------|--------------------------|---------------|------------------------|------------------|---------------------|------------------|-----------------|-------------------------|-----------------------|--------------|

## Keynote System

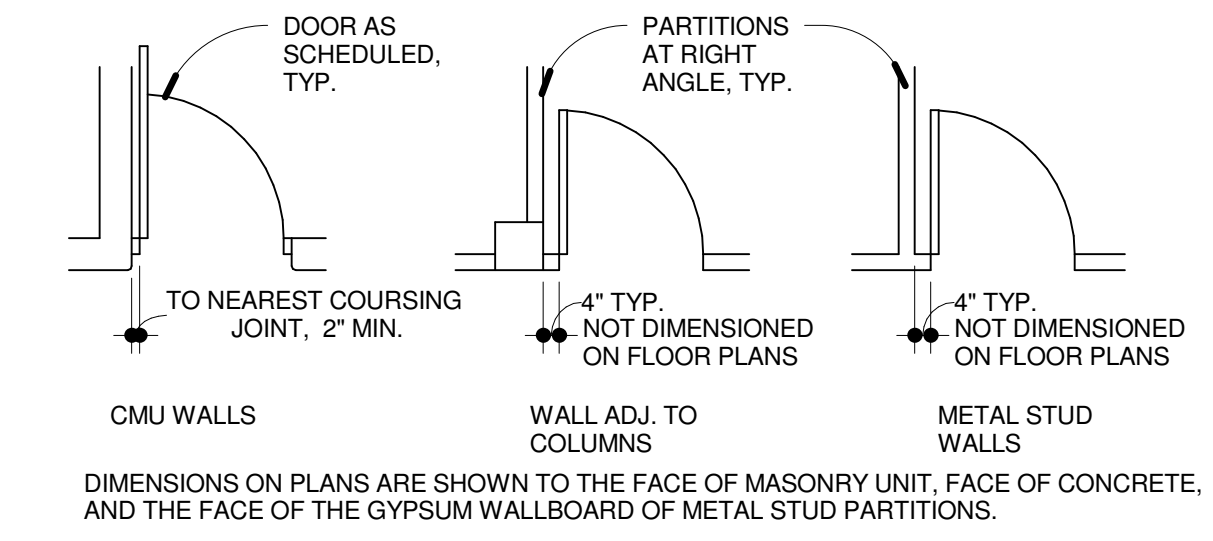
CERTAIN MATERIALS, COMPONENTS OR ASSEMBLIES ARE IDENTIFIED AND/OR DESCRIBED ON SOME DRAWINGS USING AN ALPHANUMERIC REFERENCE-IDENTIFICATION, OR KEYNOTE SYSTEM. THIS KEYNOTE SYSTEM CONSISTS OF A 6-DIGIT NUMBER FOLLOWED BY A PERIOD AND A LETTER SUFFIX. WHERE KEYNOTES ARE USED ON A DRAWING, REFER TO THE LEGEND ON THAT DRAWING FOR IDENTIFICATION WHICH RELATES TO EACH KEYNOTE ITEM. (SHOULD THE LEGEND ON THE DRAWING NOT CONTAIN THAT ITEM, REFER TO LEGENDS ON OTHER DRAWINGS).

THE KEYNOTE SYSTEM IS USED FOR CONVENIENCE AND GENERAL INFORMATION ONLY. AS AN EXPRESSION OF GENERAL INTENT, THE ARCHITECT SPECIFICALLY DOES NOT WARRANT ALL MATERIALS, COMPONENTS OR ASSEMBLIES ARE SIMILARLY IDENTIFIED, OR EVEN THE SAME MATERIAL, COMPONENT OR ASSEMBLY IN DIFFERENT DETAILS OR SECTIONS ARE SIMILARLY IDENTIFIED.

SOME MATERIALS, COMPONENTS OR ASSEMBLIES HAVE ADDITIONAL INFORMATION ADJACENT TO THE KEYNOTE. SHOULD SIMILAR CONDITIONS HAVE DIFFERENT ADDITIONAL INFORMATION, OR ONE NOT HAVE ANY, THE HIGHER QUALITY SHALL TAKE PRECEDENCE UNLESS OTHERWISE DIRECTED BY THE ARCHITECT.

UTILIZATION OF THE KEYNOTE SYSTEM AND ANY RELATION IT MAY HAVE TO SIMILARLY IDENTIFIED SPECIFICATION SECTIONS SHALL NOT CONTROL THE CONTRACTOR IN DIVIDING THE WORK AMONG SUBCONTRACTORS OR IN ESTABLISHING THE EXTENT OF WORK TO BE PERFORMED BY ANY TRADE.

THE INTENT OF THE CONSTRUCTION DOCUMENTS IS TO INCLUDE ALL ITEMS NECESSARY FOR THE PROPER EXECUTION AND COMPLETION OF THE WORK BY THE CONTRACTOR, WHETHER THE KEYNOTE SYSTEM IS USED OR NOT, AND WHETHER OR NOT THE KEYNOTE IS COMPLETE, CONSISTENT, OR THE MOST APPROPRIATE SPECIFICATION SECTION.



ITEMS SHOWN ON THE ARCHITECTURAL DRAWINGS ARE TO BE LOCATED PER THE ARCHITECTURAL DRAWINGS. NOT ALL ITEMS ARE SHOWN ON THE ARCHITECTURAL DRAWINGS. COORDINATE WITH MECHANICAL & ELECTRICAL DRAWINGS FOR LOCATION, MOUNTING CONDITIONS, QUANTITIES AND TYPES OF ALL LIGHTS, GRILLES, DIFFUSERS, EXIT SIGNS, AND ALL MISCELLANEOUS ITEMS.

WOOD BLOCKING REQUIREMENTS

PROVIDE FIRE RETARDANT TREATED WOOD BLOCKING AS SPECIFIED IN SPECIFICATIONS. SECTION 061000 - ROUGH CARPENTRY - FOR THE FOLLOWING ITEMS (UNLESS ANOTHER BACKING MATERIAL IS NOTED):

|    |  |    |                   |
|----|--|----|-------------------|
| A. | GRAB BARS  | G. | DOOR BUMPERS      |
| B. | MIRRORS  | H. | SHELVING          |
| C. | TOILET ACCESSORIES                                 | I. | CLOSET POLES      |
| D. | STAIR RAILS  | J. | COAT HOOKS        |
| E. | TOILET PARTITIONS                                  | K. | MILLWORK COUNTERS |
| F. | UNDER PRE-FAB. CURB FOR ALL ROOF-MOUNTED EQUIPMENT | L. | MILLWORK CABINETS |
|    |  | M. | TV BLOCKING       |

SIGNAGE BACKING PANELS ALL AREAS INDICATED ON THE DRAWINGS. PROVIDE 18 GA. (MINIMUM) STEEL BACKING PANELS AT SIGNAGE LOCATIONS (WHERE ATTACHMENT TO GYPSUM BOARD IS REQUIRED). SPAN PANELS THREE METAL STUDS (MINIMUM) HORIZONTALLY. REFER TO SIGNAGE ISSUE SKETCHES FOR SIGNAGE LOCATIONS.

MECHANICAL AND ELECTRICAL OPENINGS: SIZE AND LOCATION OF ALL FLOOR OPENINGS, ROOF OPENINGS, AND WALL OPENINGS REQUIRED TO ACCOMMODATE DUCT PENETRATIONS, EQUIPMENT, ETC. SHALL BE COORDINATED AND VERIFIED WITH MECHANICAL AND ELECTRICAL TRADES. FIRE SAFETY TO FILL REMAINING GAPS IN RATED OPENINGS.

MECHANICAL AND ELECTRICAL EQUIPMENT PADS: PROVIDE CONCRETE PADS FOR ALL MECHANICAL AND ELECTRICAL EQUIPMENT AS REQUIRED. REFER TO MECHANICAL AND ELECTRICAL DRAWINGS FOR LOCATION OF ALL EQUIPMENT AND VERIFY SIZE WITH MECHANICAL AND ELECTRICAL TRADES.

ROOF EQUIPMENT AND OPENINGS: REFER TO MECHANICAL AND ELECTRICAL DRAWINGS FOR LOCATION OF ALL EXHAUST FANS, VENTS, MECHANICAL OR ELECTRICAL EQUIPMENT, ETC. PROVIDE ROOF CURBS AND FLASHING AS NEEDED.

FIRE EXTINGUISHER TYPES: PROVIDE 2A-10B-C TYPE FIRE EXTINGUISHERS AT ALL TYPICAL LOCATIONS UNLESS NOTED OTHERWISE.

## General Notes

FIRE RESISTIVE ASSEMBLIES: THE PROJECT SHALL CONFORM TO UNDERWRITERS LABORATORY FIRE RESISTANCE DIRECTORY AND BUILDING MATERIALS DIRECTORY.

REFER TO SPECIFICATION SECTION 078100, AS APPLICABLE, FOR SPRAY-ON FIREPROOFING REQUIREMENTS. ANY MATERIAL SUBSTITUTIONS TO A LISTED U.S. DESIGN NUMBER SHALL BE COORDINATED BY THE RELATED PRIME CONTRACTOR. SUBCONTRACTOR AND/OR MATERIAL SUPPLIER FOR COMPLIANCE. THE CONTRACTOR SHALL BE RESPONSIBLE FOR ALL APPROVALS - FOR ANY MATERIAL SUBSTITUTIONS IN THE MECHANICAL AND ELECTRICAL U.L. DESIGN ASSEMBLY - BY THE FIRE MARSHAL AND BUILDING INSPECTOR HAVING JURISDICTION PRIOR TO ACCEPTANCE.

FOR ANY CHANGE OF U.L. DESIGN NUMBER, OR ANY CHANGE IN MATERIAL(S) IN A U.L. DESIGN ASSEMBLY, IT WILL BE THE RESPONSIBILITY OF THE CONTRACTOR TO COORDINATE ALL OTHER RELATED MATERIALS OR ASSEMBLIES AFFECTED BY THE CHANGE.

PROVIDE COMPLETE U.L. APPROVED THROUGH-PENETRATION FIRESTOP SYSTEMS AT ALL RATED WALL PENETRATIONS.

TREATMENT OF EXISTING SURFACES: PATCH AND REPAIR ALL EXISTING WALL SURFACES ADJACENT TO NEW WORK AS REQUIRED TO ACHIEVE AN UNINTERRUPTED SURFACE APPEARANCE.

PATCH AND REPAIR CONCRETE FLOORS TO ACHIEVE A CONTINUOUS, SMOOTH AND FLUSH FLOOR SURFACE.

DIMENSIONING CRITERIA

DIMENSIONS FOR LOCATING PARTITIONS AND OPENINGS ARE GENERALLY ESTABLISHED BY CRITERIA. ONLY EXCEPTIONS TO THESE CRITERIA WILL BE DIMENSIONED. TYPICAL DIMENSIONING CRITERIA ARE OUTLINED BELOW.

FOR OPENINGS IN PARTITIONS OR WALLS:

(A) WHEN AN OPENING OCCURS AT A COLUMN OR GRID LINE, NO

DIMENSIONS WILL BE SHOWN ON THE PLANS. THE OPENING WIDTH WILL BE ESTABLISHED BY EITHER CRITERIA OR SCHEDULES.

(B) WHEN NEITHER THE JAMB OF A DOOR OR OPENING OCCURS AT A COLUMN OR GRID LINE, OR ADJACENT TO A PARTITION AT A RIGHT ANGLE, ONE JAMB WILL BE LOCATED DIMENSIONALLY.

(C) WHEN ONE JAMB IS LOCATED BY A PARTITION AT A RIGHT ANGLE, THE FOLLOWING DIAGRAMS APPLY:



## Deferred Submittals:

- Aluminum Curtainwall / Storefront systems (08 41 13 + 08 44 13)
- Glazed Decorative Metal Railing systems (05 73 13)
- Metal Pan Stairs and Guardrails (05 51 13)
- Exterior wall framing (05 40 00)
- Telescoping stands (12 66 00)
- Elevator guide rail and support brackets (14 24 00)
- Mechanical equipment anchorage (CM to provide updates as necessary).
- Equipment seismic bracing (CM to provide updates as necessary).
- Items in Coordination w/ local Fire Marshal:
  - Fire suppression system (Div 21)
  - Fire alarm system (28 30 00)
  - Generator/Aboveground Fuel Storage (CM to coordinate w/ Fire Marshal)
  - Methane (Refer to ENV Drawings) (CM to coordinate w/ Fire Marshal)
  - Fixed Fire Extinguishing Systems (CM to coordinate w/ Fire Marshal)

## Scope of Work

Foundation & Utilities Permit "B0973-15":

The intent of this work is to provide Foundation only permit for Main Building & Covered Parking, site retaining walls, site walls for the 'Future' 2-Story Practice Facility. Other work that occurs within separate scope shall be submitted as a separate permit.

NOTE: Separate permit application is required for any light pole foundations, plumbing work, and electrical work.

## Fire Department Coordination Items:

GENERAL:

- Fire sprinkler work is to be submitted under separate permit and approved prior to commencing work. (CFC § 901.2)*
- Fire alarm system work is to be submitted under separate permit and approved prior to commencing work (CFC § 901.2)*
- The commercial cooking hood fire extinguishing system work is to be submitted under separate permit and approved prior to commencing work (CFC § 901.2)*
- Private fire water service work is to be submitted under separate permit and approved prior to commencing work. (CFC § 901.2)*
- Exit doors to have single acting hardware with no special knowledge to operate. (CFC § 1008.1.8)*
- (REFER TO DOOR HARDWARE 087100)*
- Exit signs are to be illuminated at all times with a back-up power source. (CFC § 1011.2)*
- A recessed Knox Box is to be installed on the building and Knox Company Override Key Switches are required at each access gate to the fire apparatus access roadway. The location is to be field verified by the field fire inspector. (CFC § 506.1) (REFER TO A-332)*
- Building address numbers are to be a minimum 6 inches in height, in a contrasting color to the background, and installed on the street side of the building. (CFC § 505.1) (REFER TO A-393)*
- Fire extinguishers are to be located within a 75 foot travel distance and to have a minimum rating of 2A-10BC. Fire extinguisher locations are to be field verified by the fire department inspector. (CCR T-19 § 568).*
- (REFER TO A-111, A-112, A-121, A-122).*
- Install plainly visible and legible signs at doors into rooms with electrical control panels stating ELECTRICAL ROOM. (CFC § 605.3.1)*
- (REFER TO GS-111, GS-112, GS-121, GS-122)*
- Install plainly visible and legible signs at doors leading to controls for air conditioning equipment and fire protection equipment. (CFC § 509.1)*
- (REFER TO GS-111, GS-112, GS-121, GS-122)*
- All demolition and construction activities are to be performed in accordance with California Fire Code Chapter 14.*
- The generator and aboveground diesel fuel storage tank installation and work is to be submitted under separate permit. (CFC § 105.7.7)*
- Emergency procedure/evacuation signs are required for this building. The emergency procedure/evacuation plan must be submitted to the El Segundo Fire Department, approved and installed prior to the building permit final. (CCR T-19 § 3.09(a))*
- (REFER TO GS - \_\_\_\_\_)*

## PRIVATE FIRE SERVICE MAIN:

Add Private Underground Fire Service Main to the Deferred Submittals list (CFC § 901.2)

## FIRE ALARM / VOICE EVACUATION SYSTEM:

This project requires a fire alarm/voice evacuation system. Provide a note on the plans that a fire alarm voice evacuation system is to be installed. (REFER TO SPEC 283000 FIRE DETECTION AND ALARM SYSTEM)

## Building Commissioning:

Prior to permit being finalized, a complete report of the commissioning process shall be provided to the Owner/Owner's representative and to the inspector.

Also, note specifications COMMISSIONING REQUIREMENTS - 019 100

## Pending (Rain Screen)

THE CURRENT DRAWINGS INDICATE AN 'INSULATED-CORE METAL WALL PANEL' SYSTEM WHICH WILL BE VOID AFTER 'RAIN SCREEN' HAS BEEN IMPLEMENTED. DETAILING FOR THE 'RAIN SCREEN' WILL BE UPDATED IN AN UPCOMING ASI. (REFERENCE DETAIL 2/A-311.2 - TYP.)

## Pending (Fire Proofing)

THE 'FIRE PROOFING' UL DETAILS ARE PENDING REVIEW OF THE CITY RECENT BACK-CHECK NO. 2'. DETAILS WILL BE UPDATED IN AN UPCOMING ASI. (REFERENCE DETAIL 2/A-101)

## Pending (Hydro Pools)

THE 'HYDRO POOLS' ARE PENDING THE APPROVAL OF THE LA COUNTY HEALTH DEPARTMENT INTENDED MANUFACTURER. DETAILS WILL BE UPDATED IN AN UPCOMING ASI. PENDING THIS APPROVAL. (REFERENCE PLAN 1/A-101).

## Pending (Sponsorship Signage)

THE SIGNAGE IS PENDING REVIEW OF THE OWNERSHIP AND CORPORATE SPONSORS. DETAILING FOR SIGNS WILL BE UPDATED IN AN UPCOMING ASI. (REFERENCE DRAWING A-200 & A-390 ALONG W/ GRAPHIC SIGNAGE DRAWINGS - GS)

## Los Angeles Lakers Headquarters

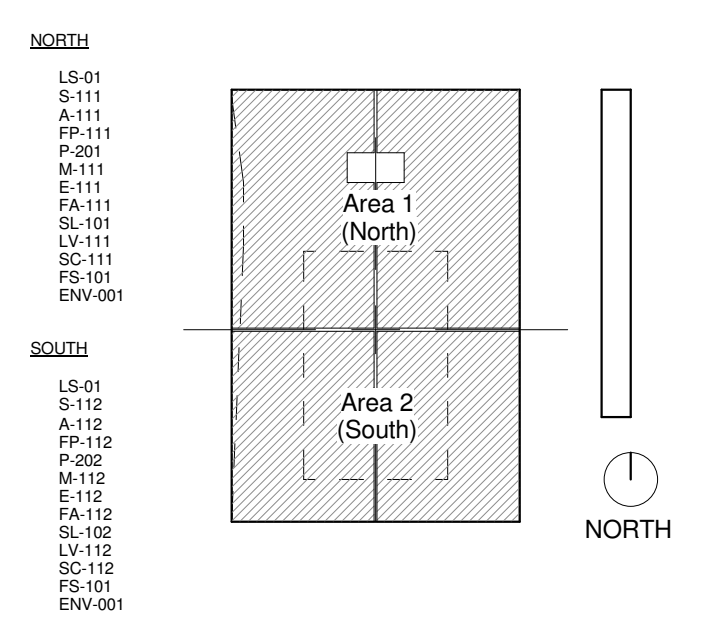
2275 Mariposa  
El Segundo, California 90245

Consultant

Professional Seal

| No. | Description                       | Date     |
|-----|-----------------------------------|----------|
| 1   | 50% CDs for Pricing               | 08/07/15 |
| 2   | Foundation & Utilities Permit     | 08/12/15 |
| 3   | Plan Check                        | 09/18/15 |
| 4   | Back-Check#1 - Fndn & Utility     | 09/18/15 |
| 5   | ASI 004 (Fndn Const.)             | 10/30/15 |
| 6   | Back-Check #1                     | 11/20/15 |
| 7   | Back-Check #2 - ASI 008           | 01/08/16 |
| 8   | Issued for Construction - ASI 010 | 01/22/16 |

Key Plan



Sheet Title

## General Information Sheet

Project Number 2014-015 CAD File

Sheet number



### Material Keynotes:

|          |  |
|----------|--|
| 033000.E | CONCRETE FLOOR SLAB                            |
| 033000.G | STEEL REINFORCING                              |
| 071399.A | SUB SLAB MEMBRANE COATING (REFER TO ENV DWG'S) |
| 072100.A | RIGID FOUNDATION PERIMETER INSULATION          |
| 084113.B | ALUMINUM DOOR, PREFINISHED                     |
| 084113.C | ALUMINUM WINDOW FRAME, PREFINISHED             |
| 087100.B | ALUMINUM THRESHOLD, SET IN MASTIC              |

### Edge of Slab Legend:

|  |                |
|--|----------------|
|  | DEPRESSION     |
|  | SLAB OPENING   |
|  | SPOT ELEVATION |
|  | ROOF DECK      |

### Grade Conversion:

0'-0" DRAWING BASE ELEVATION ON ARCHITECTURAL = 103.30

NOTE:  
THIS DRAWING IS PROVIDED FOR GENERAL INFORMATION AND PRELIMINARY COORDINATION ONLY.

CONTRACTOR TO CONFIRM & COORDINATE ALL FINAL INFORMATION RELATED TO DEPRESSIONS, OPENINGS, PENETRATIONS, AND SLAB VARIATIONS W/ ALL SELECTED MANUFACTURES.

### Fire Rating Notes:

- PROTECT ALL GRAVITY LOAD BEARING STRUCTURAL ELEMENTS WITH CEMENTITIOUS FIREPROOFING ACCORDING TO NOTES ON DRAWINGS LS-101  
APPLICABLE UL DESIGNS :  
2 HR COLUMNS UL# X790  
2 HR FLOOR SLAB AND BEAMS UL# D902  
1 HR ROOF AND BEAMS UL# P730
- ROOF DECK AT MAIN COURT, PRACTICE COURT AND ALL OPEN WEB JOISTS SHALL NOT BE FIREPROOFED.
- COLUMNS THUS MARKED (G-003.1)

SHALL BE PROTECTED WITH INTUMESCENT PAINT WHERE COLUMN IS NOT COVERED BY GYP ENCLOSURE (REFER TO DETAILS ON DRAWINGS A-381 THROUGH A-385)

- 1 HR COLUMNS UL# X606
- BEAMS AT PERIMETER OF UPPER ROOF SHALL BE PROTECTED WITH INTUMESCENT PAINT (REFER TO DETAILS ON DRAWINGS A-381 THROUGH A-385)  
1 HR BEAMS UL# S601
- IN REGARD TO THE STEEL FIRE PROOFING REFER TO 'FIRE PROOFING MEMO' DATED 01/08/16 FROM ROSSETTI. ALSO REFER TO 'FIRE RATINGS' 2/A-101.
- CONTINUOUS INSPECTION IS REQUIRED FOR SPRAY TYPE OF FIRE PROOFING MATERIAL. ALSO, REFER TO SPECIFICATIONS 073100 - APPLIED FIREPROOFING & 059646 INTUMESCENT PAINTS.

Project

# Los Angeles Lakers Headquarters

2275 Mariposa  
El Segundo, California 90245

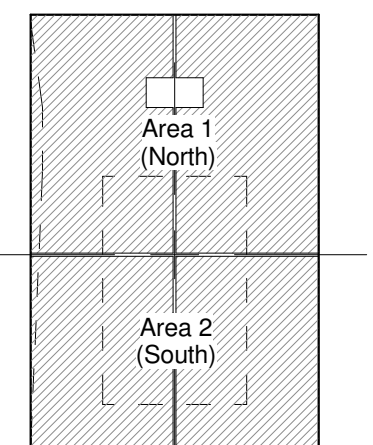
Consultant

Professional Seal

| No. | Description                       | Date     |
|-----|-----------------------------------|----------|
| 1   | 50% CDs for Pricing               | 08/07/15 |
| 2   | Foundation & Utilities Permit     | 08/12/15 |
| 3   | Plan Check                        | 09/18/15 |
| 4   | Back-Check#1 - Fndn & Utility     | 10/09/15 |
| 5   | ASI 004 (Fndn Const.)             | 10/30/15 |
| 6   | Back-Check #1                     | 11/20/15 |
| 7   | Back-Check #2 - ASI 008           | 01/08/16 |
| 8   | Issued for Construction - ASI 010 | 01/22/16 |
| 9   | ASI 011                           | 02/05/16 |

Key Plan

084113.B  
084113.C  
072100.A  
084113.B  
087100.B  
072100.A



Sheet Title

## General Coordination - Level 1 Exterior Slab Edge

Project Number

2014-015

Sheet number

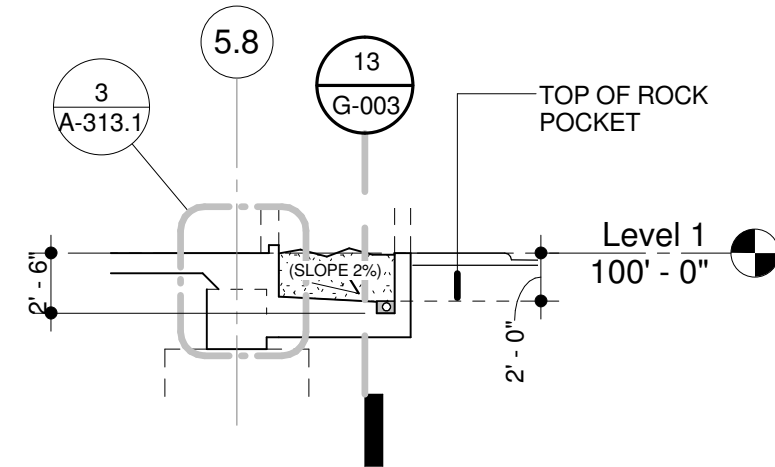
CAD File

# G-003

### 15 G-003 Section at Hydro Pits

Scale: 1/8" = 1'-0"

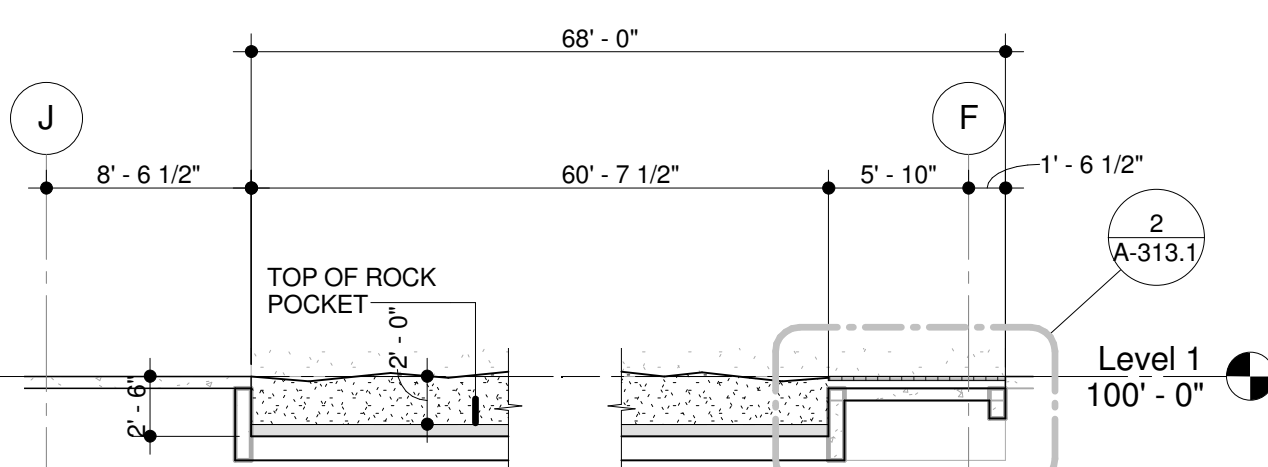
Ref:



### 14 G-003 Section at Sand Pit

Scale: 1/8" = 1'-0"

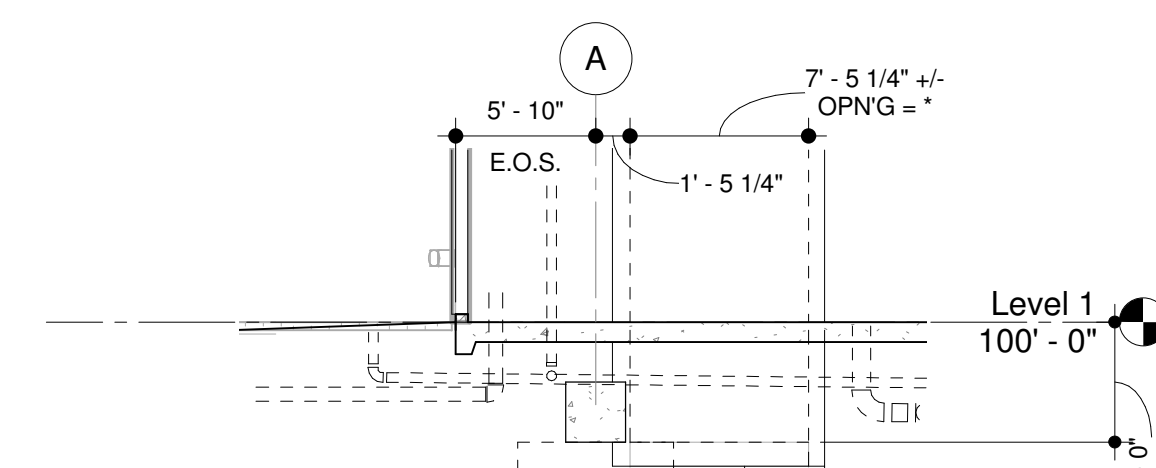
Ref:



### 13 G-003 Section at Sand Pit (Longitudinal)

Scale: 1/8" = 1'-0"

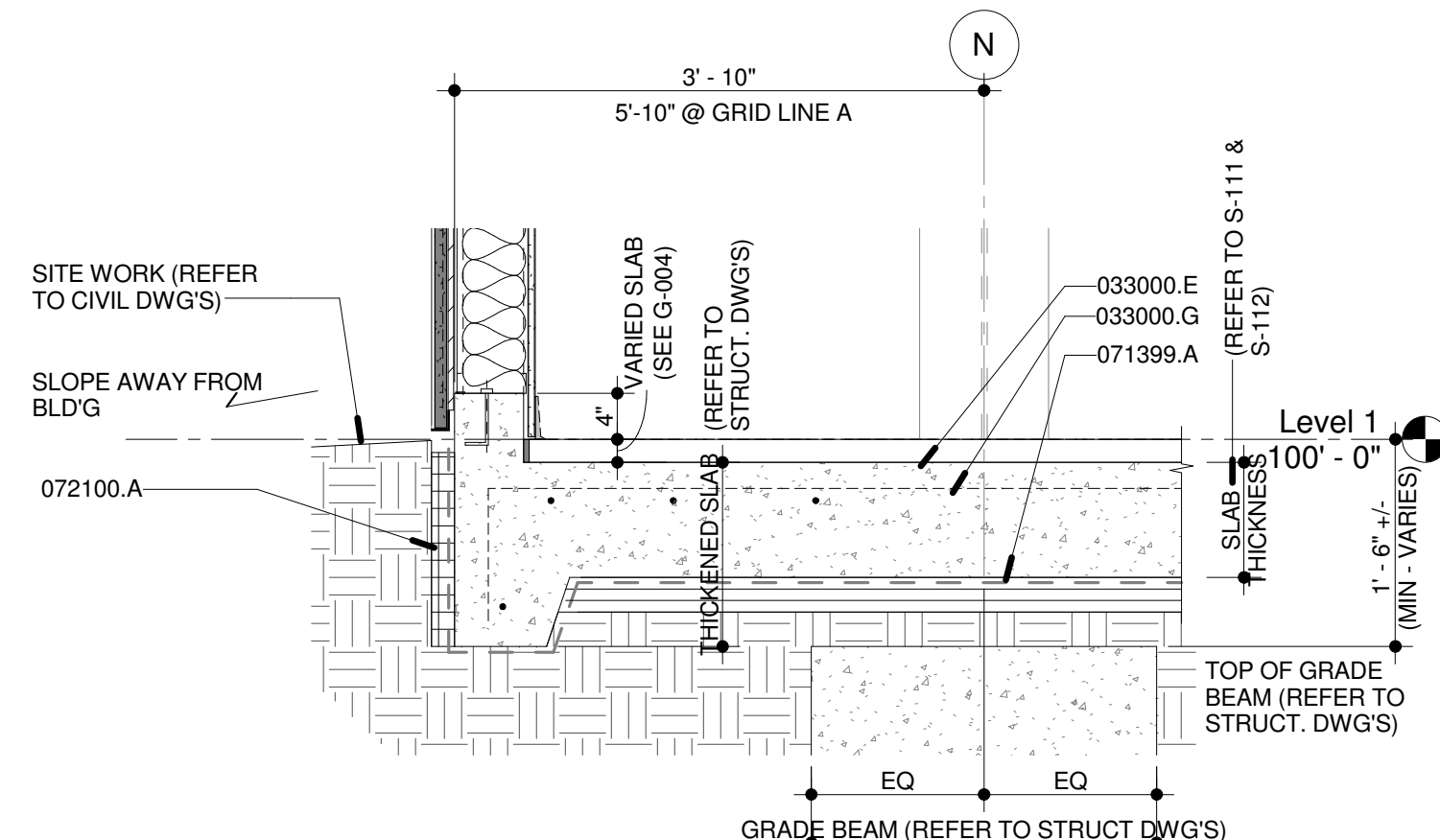
Ref:



### 12 G-003 Section at Extended Slab

Scale: 1/8" = 1'-0"

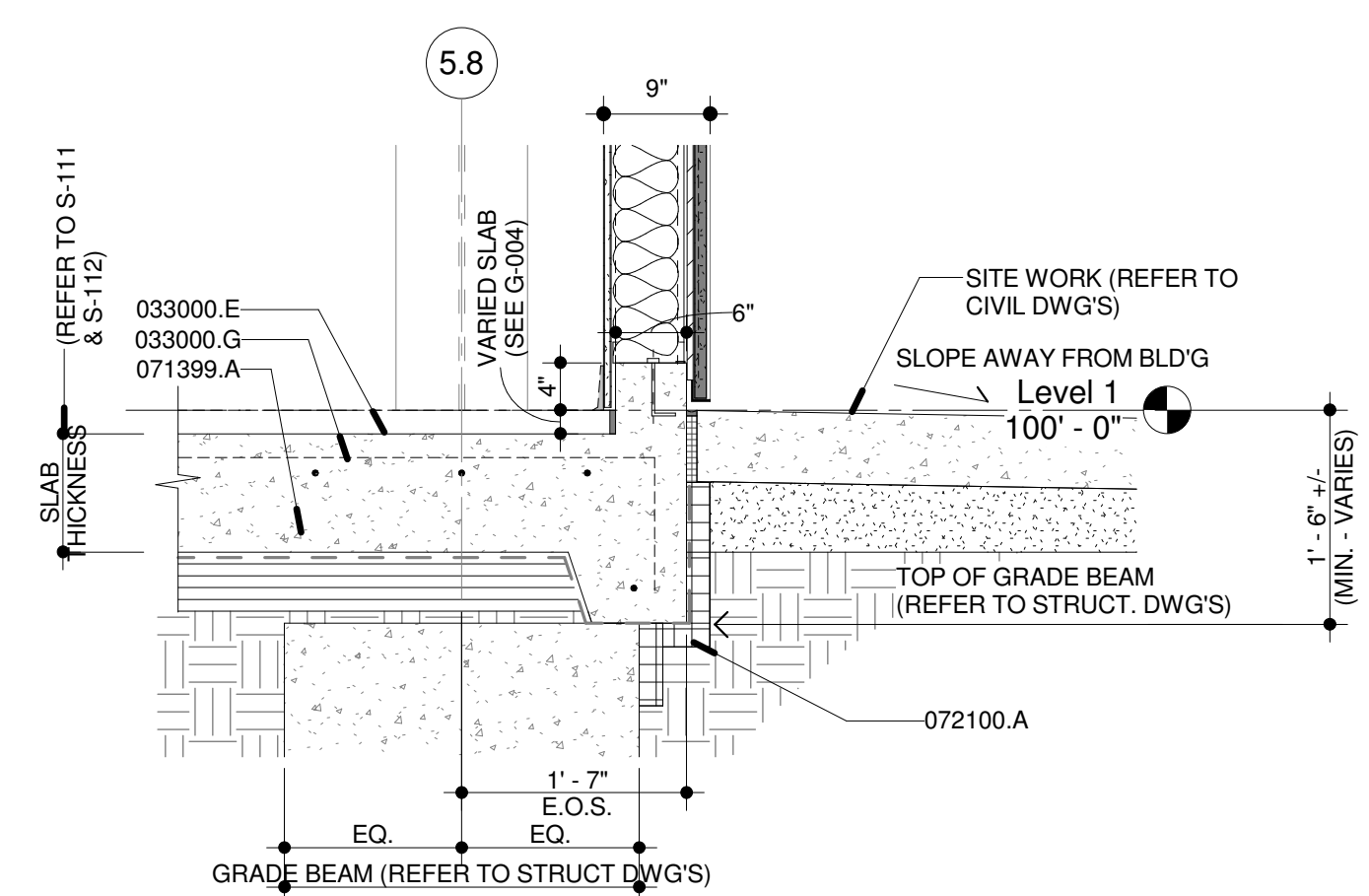
Ref:



### 11 G-003 Detail at Curb Extended Slab (Typical)

Scale: 3/4" = 1'-0"

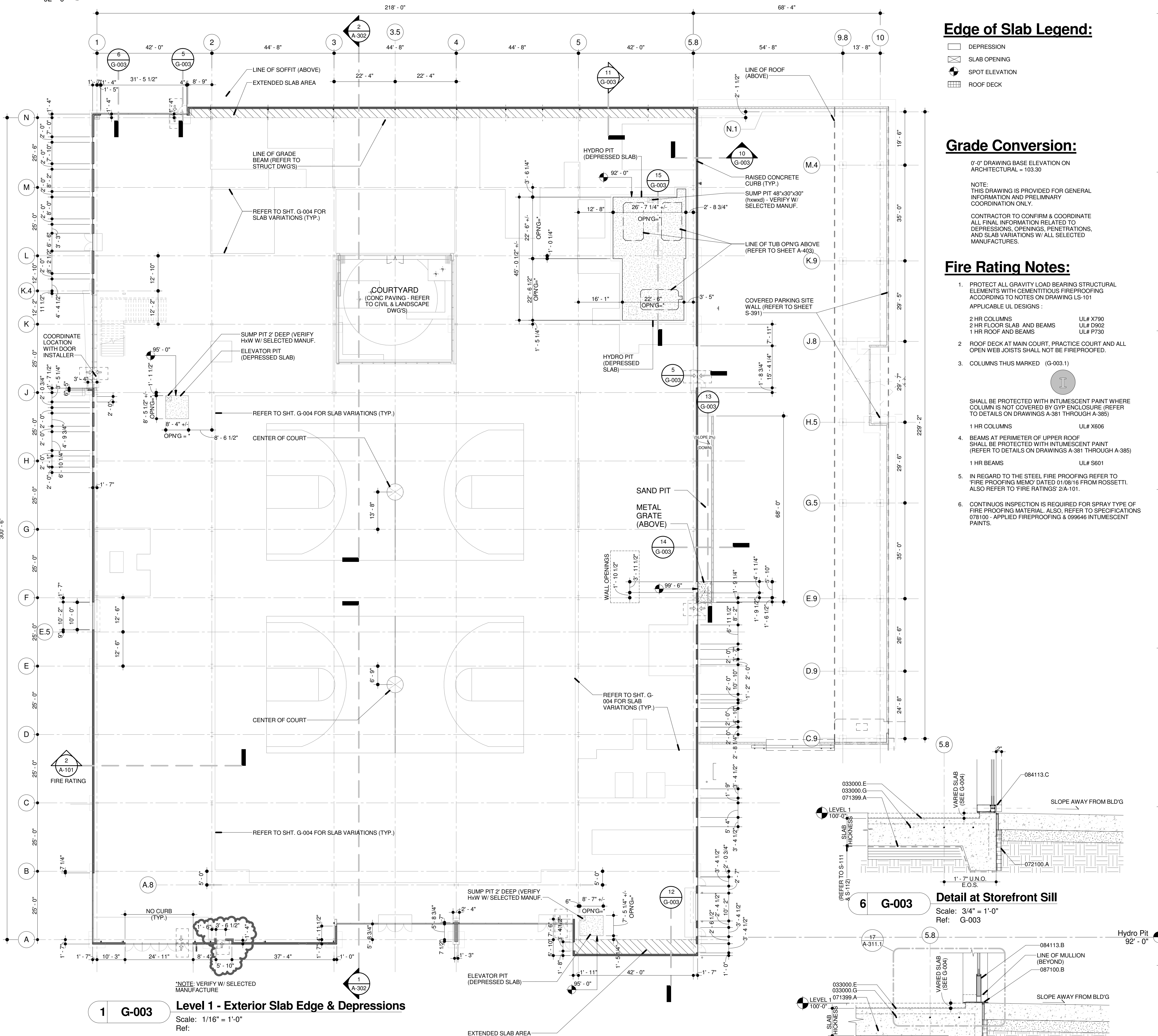
Ref:



### 10 G-003 Detail at Curb (Typical)

Scale: 3/4" = 1'-0"

Ref:



### 1 G-003 Level 1 - Exterior Slab Edge & Depressions

Scale: 1/16" = 1'-0"

Ref:

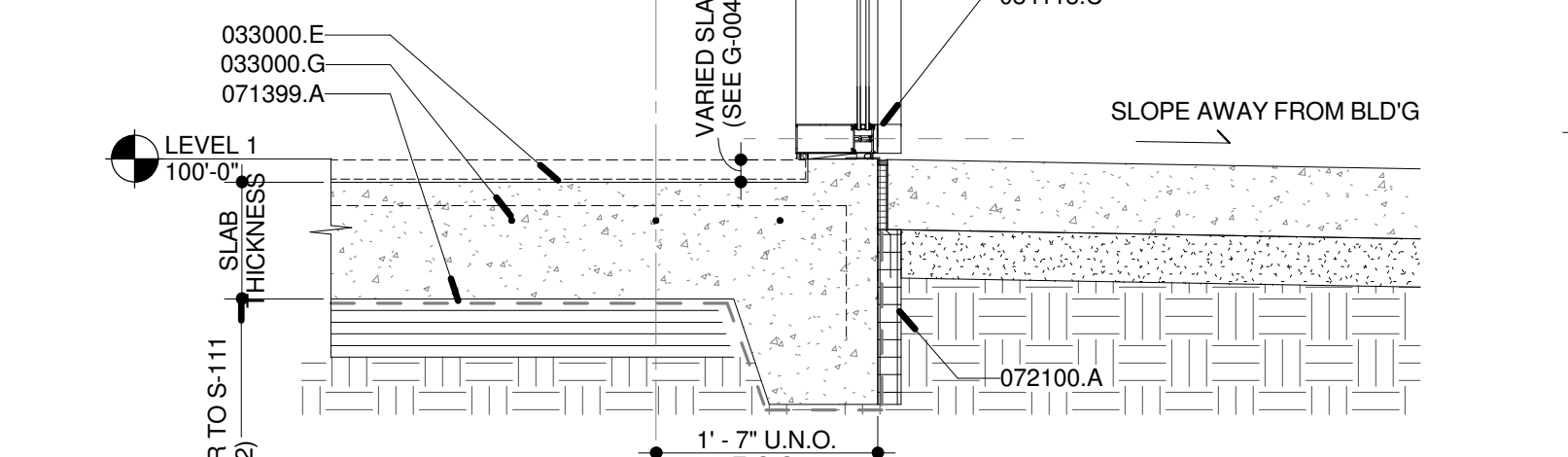
### Slab Depression Note:

- \* = ALL SLAB OPENINGS DIMENSIONS TO BE VERIFIED W/ SELECTED MANUFACTURE PRIOR TO CONSTRUCTION.
- ALL CURB OPENINGS TO BE VERIFIED W/ DOOR FRAME SCHEDULE.

### 6 G-003 Detail at Storefront Sill

Scale: 3/4" = 1'-0"

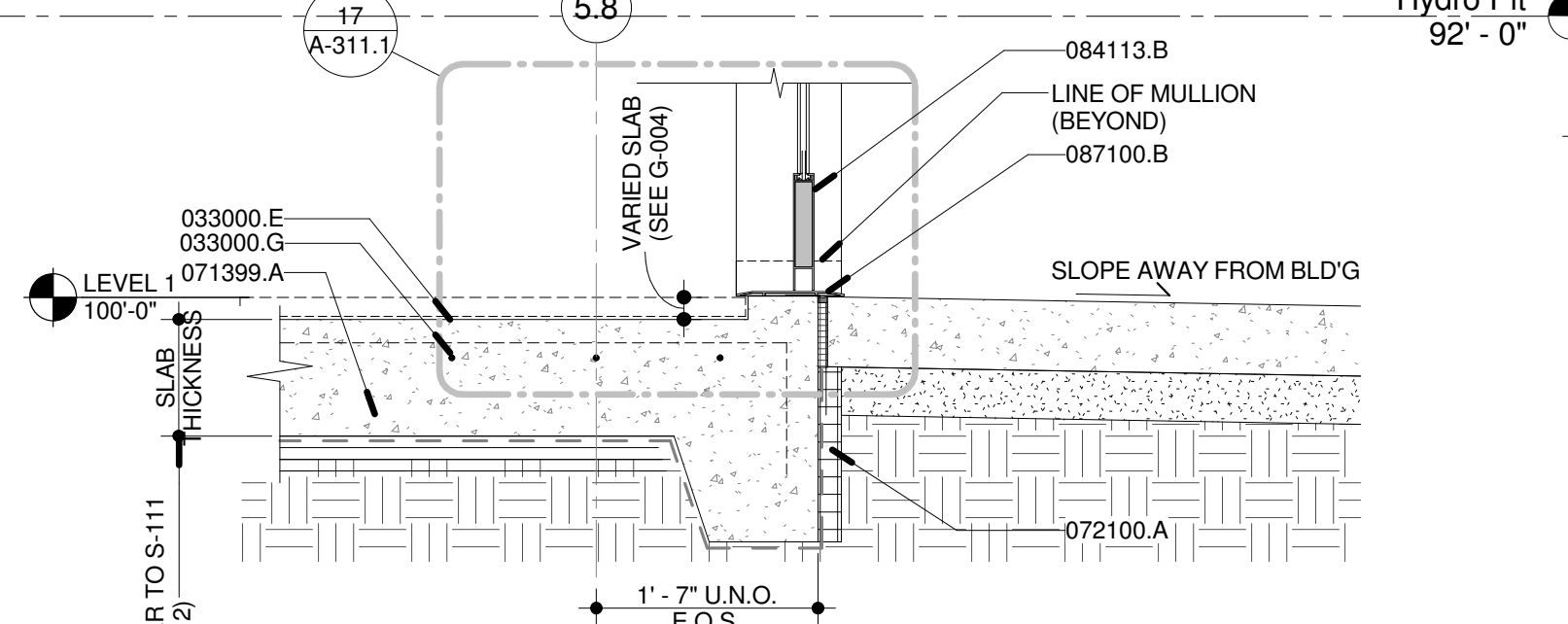
Ref: G-003



### 5 G-003 Detail at Threshold

Scale: 3/4" = 1'-0"

Ref: G-003





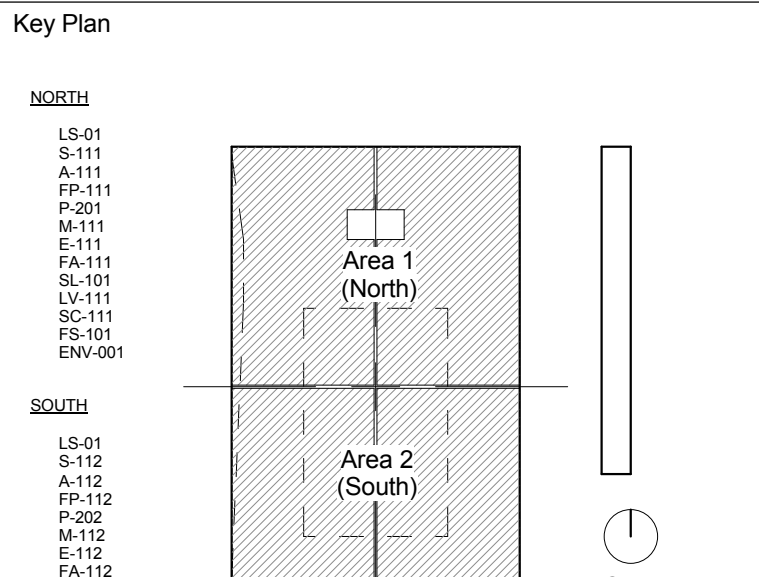
Project  
**Los Angeles  
Lakers  
Headquarters**

2275 Mariposa  
El Segundo, California 90245

Consultant

Professional Seal

| No. | Description                       | Date     |
|-----|-----------------------------------|----------|
| 1   | 50% CDs for Pricing               | 08/07/15 |
| 2   | Foundation & Utilities Permit     | 08/12/15 |
| 3   | Plan Check                        | 09/18/15 |
| 4   | Back-Check #1 - Fndn & Utility    | 10/09/15 |
| 5   | ASI 004 (Fndn Const.)             | 10/30/15 |
| 6   | Back-Check #1                     | 11/20/15 |
| 7   | Back-Check #2 - ASI 008           | 01/08/16 |
| 8   | Issued for Construction - ASI 010 | 01/22/16 |



Sheet Title  
**General Coordination - Level  
1 Exterior Slab Edge**

Project Number  
**2014-015**

CAD File

Sheet number

**G-003**

**Material Keynotes:**

- 033000.E CONCRETE FLOOR SLAB
- 033000.G STEEL REINFORCING
- 071399.A SUB SLAB MEMBRANE COATING (REFER TO ENV DWGS)
- 072100.A RIGID FOUNDATION PERIMETER INSULATION
- 084113.B ALUMINUM DOOR, PREFINISHED
- 084113.C ALUMINUM WINDOW FRAME, PREFINISHED
- 087100.B ALUMINUM THRESHOLD, SET IN MASTIC

**Edge of Slab Legend:**

- DEPRESSION
- SLAB OPENING
- SPOT ELEVATION
- ROOF DECK

**Grade Conversion:**

8'-0" DRAWING BASE ELEVATION ON ARCHITECTURAL = 103.30

NOTE:  
THIS DRAWING IS PROVIDED FOR GENERAL INFORMATION AND PRELIMINARY COORDINATION ONLY.

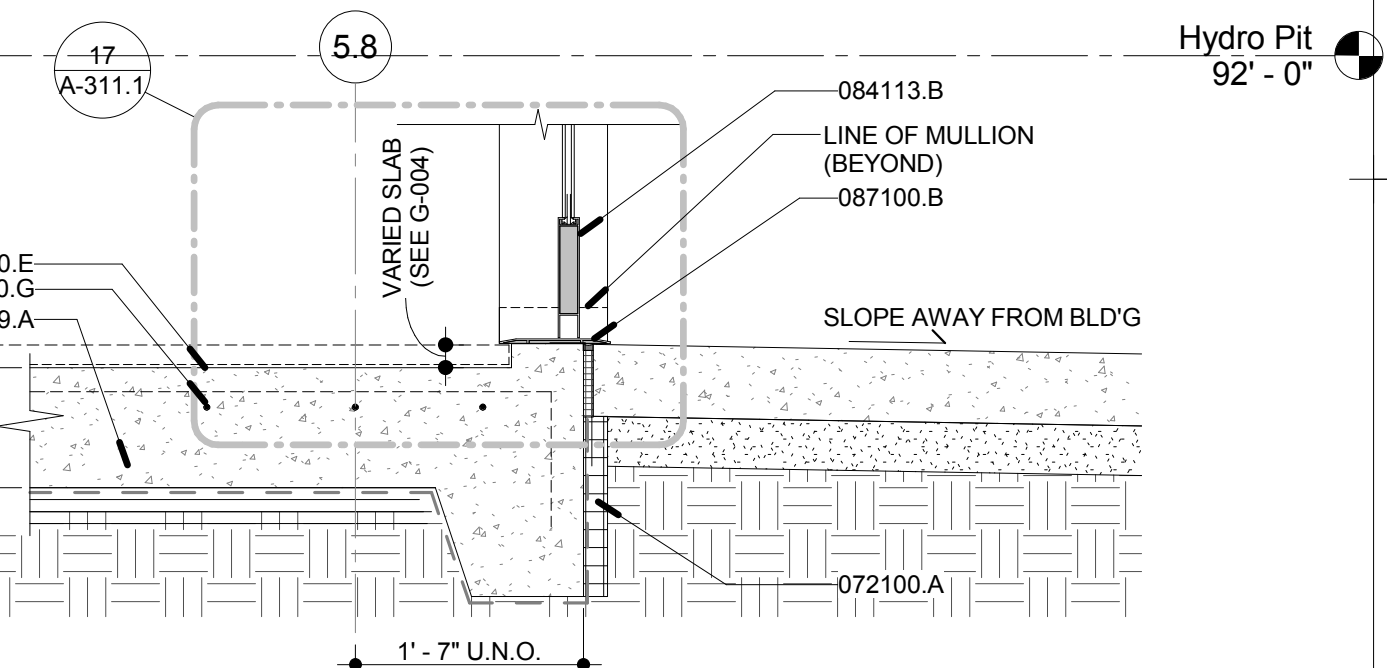
CONTRACTOR TO CONFIRM & COORDINATE ALL FINAL INFORMATION RELATED TO DEPRESSIONS, OPENINGS, PENETRATIONS, AND SLAB VARIATIONS W/ ALL SELECTED MANUFACTURES.

**Fire Rating Notes:**

- PROTECT ALL GRAVITY LOAD BEARING STRUCTURAL ELEMENTS WITH CEMENTITIOUS FIREPROOFING ACCORDING TO NOTES ON DRAWING LS-101  
APPLICABLE UL DESIGNS:  
2 HR COLUMNS UL# X790  
2 HR FLOOR SLAB AND BEAMS UL# D902  
1 HR ROOF AND BEAMS UL# P730
- ROOF DECK AT MAIN COURT, PRACTICE COURT AND ALL OPEN WEB JOISTS SHALL NOT BE FIREPROOFED.
- COLUMNS THUS MARKED (G-003.1)
- SHALL BE PROTECTED WITH INTUMESCENT PAINT WHERE COLUMN IS NOT COVERED BY GYP ENCLASURE (REFER TO DETAILS ON DRAWINGS A-381 THROUGH A-385)  
1 HR COLUMNS UL# X606
- BEAMS AT PERIMETER OF UPPER ROOF SHALL BE PROTECTED WITH INTUMESCENT PAINT (REFER TO DETAILS ON DRAWINGS A-381 THROUGH A-385)  
1 HR BEAMS UL# S601
- IN REGARD TO THE STEEL FIRE PROOFING REFER TO "FIRE PROOFING MEMO" DATED 01/08/16 FROM ROSSETTI. ALSO REFER TO "FIRE RATINGS" 2/A-101.
- CONTINUOUS INSPECTION IS REQUIRED FOR SPRAY TYPE OF FIRE PROOFING MATERIAL. ALSO, REFER TO SPECIFICATIONS 073100 - APPLIED FIREPROOFING & 059646 INTUMESCENT PAINTS.

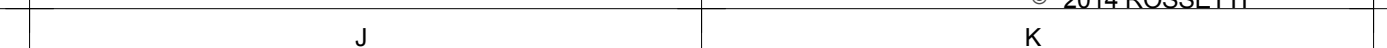
**Detail at Storefront Sill**

Scale: 3/4" = 1'-0"  
Ref: G-003



**Detail at Threshold**

Scale: 3/4" = 1'-0"  
Ref: G-003



**Level 1 - Exterior Slab Edge & Depressions**

Scale: 1/16" = 1'-0"  
Ref:

**Slab Depression Note:**

- \* = ALL SLAB OPENINGS DIMENSIONS TO BE VERIFIED W/ SELECTED MANUFACTURE PRIOR TO CONSTRUCTION.
- ALL CURB OPENINGS TO BE VERIFIED W/ DOOR FRAME SCHEDULE.

**1 G-003**

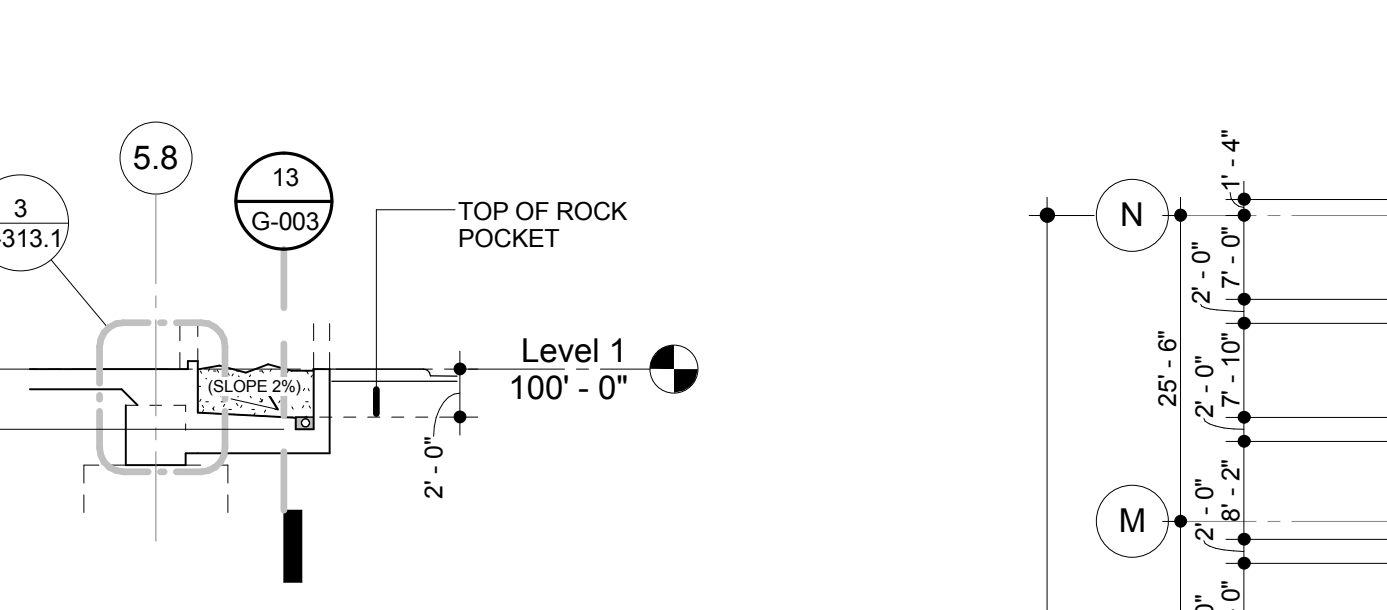
Scale: 1/16" = 1'-0"  
Ref:

**Slab Depression Note:**

- \* = ALL SLAB OPENINGS DIMENSIONS TO BE VERIFIED W/ SELECTED MANUFACTURE PRIOR TO CONSTRUCTION.
- ALL CURB OPENINGS TO BE VERIFIED W/ DOOR FRAME SCHEDULE.

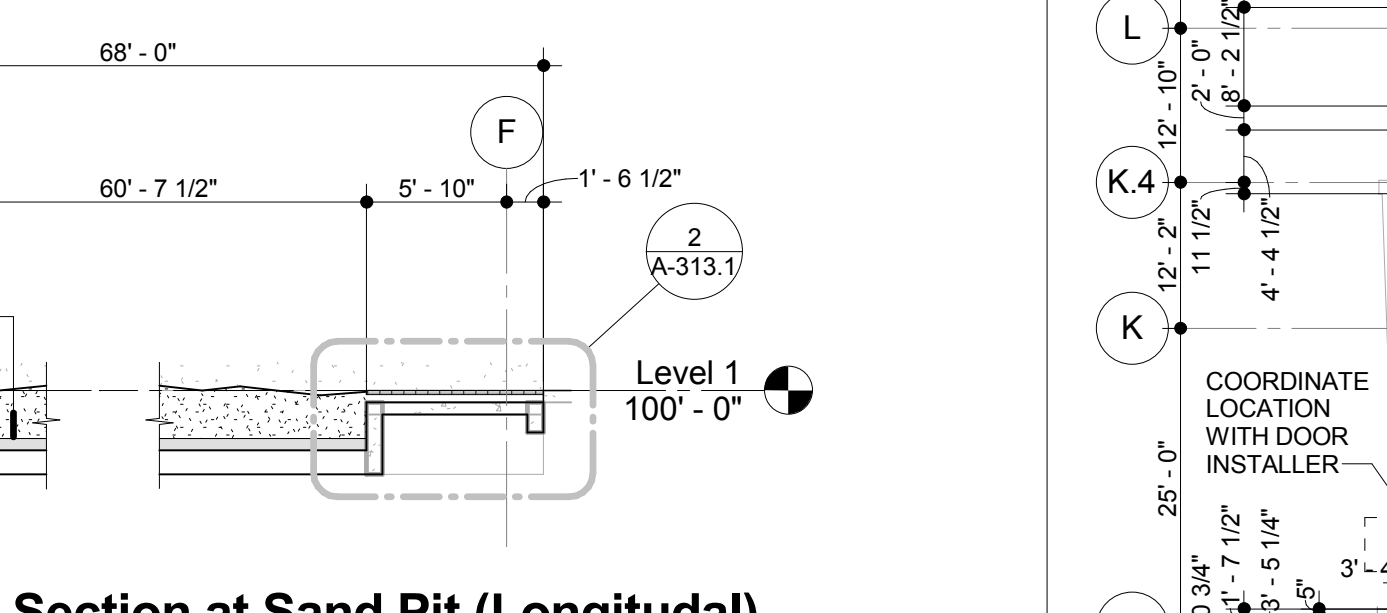
**Section at Hydro Pits**

Scale: 1/8" = 1'-0"  
Ref:



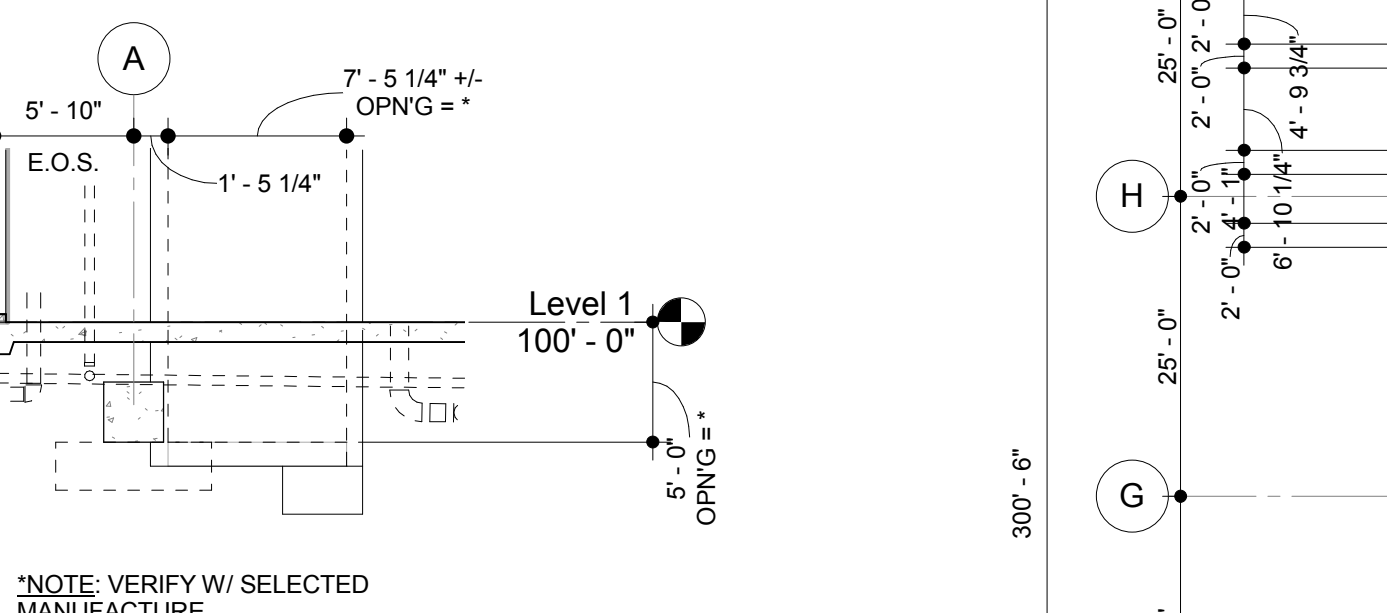
**Section at Sand Pit**

Scale: 1/8" = 1'-0"  
Ref:



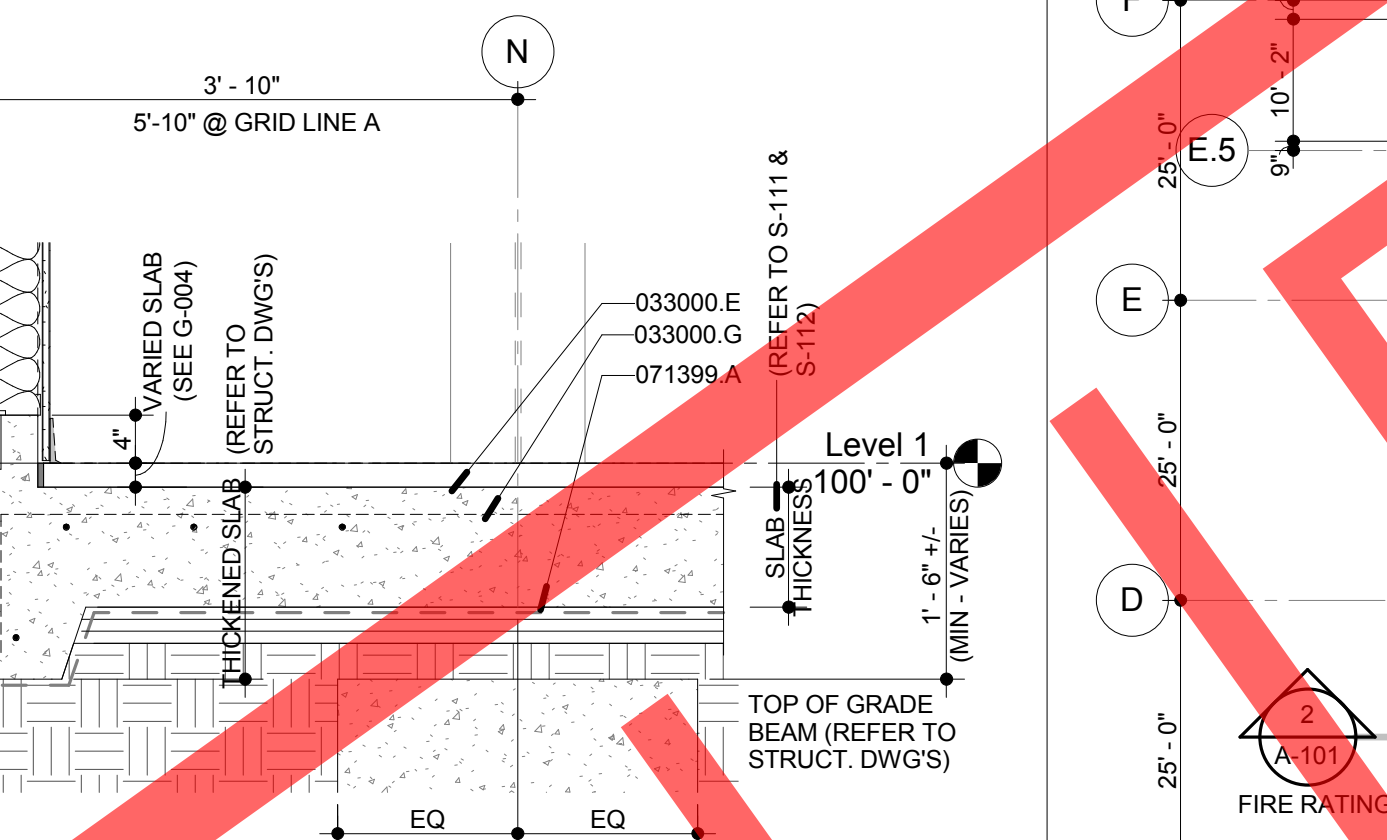
**Section at Sand Pit (Longitudinal)**

Scale: 1/8" = 1'-0"  
Ref:



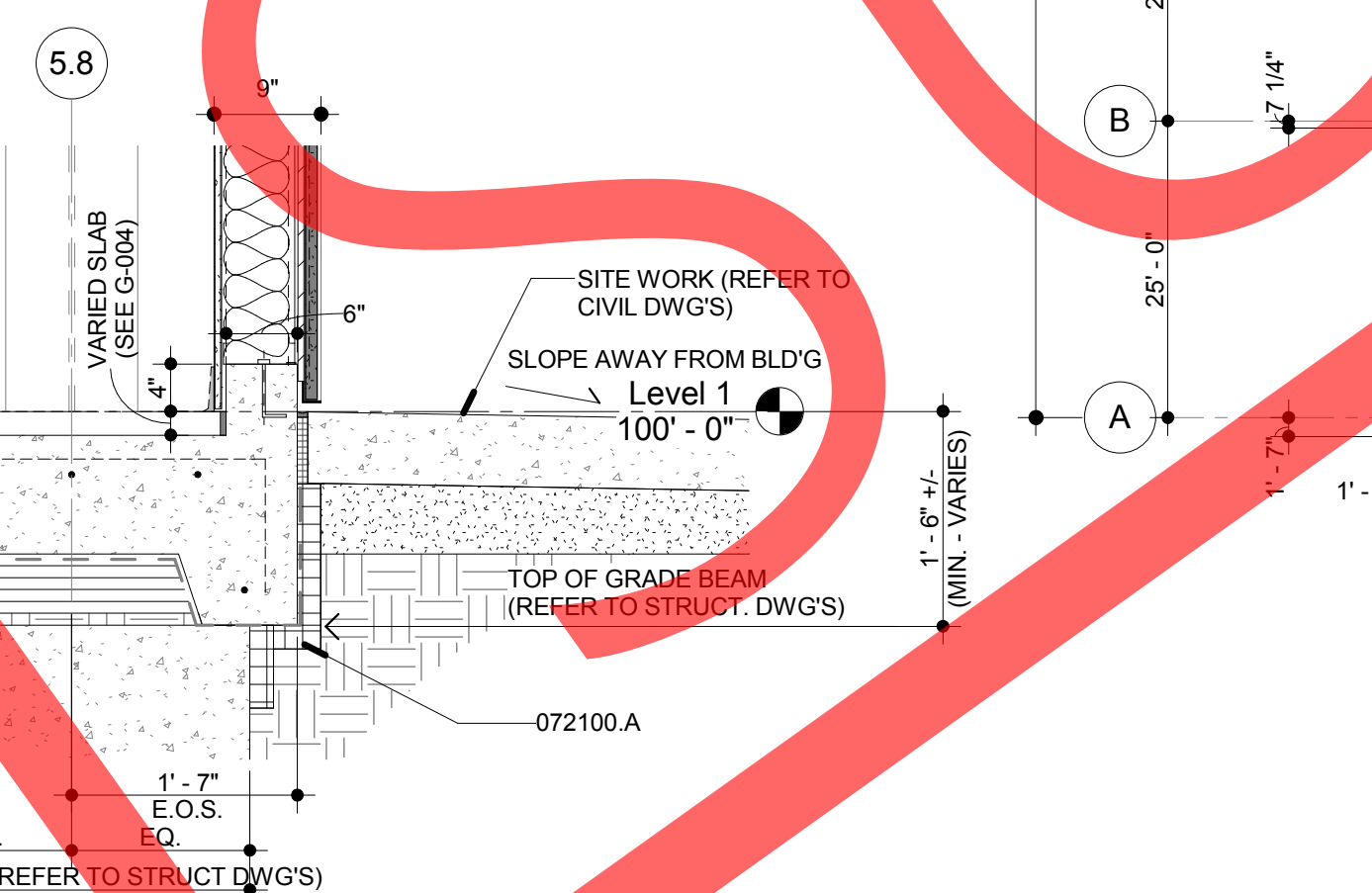
**Section at Extended Slab**

Scale: 1/8" = 1'-0"  
Ref:



**Detail at Curb Extended Slab (Typical)**

Scale: 3/4" = 1'-0"  
Ref:



**Detail at Curb (Typical)**

Scale: 3/4" = 1'-0"  
Ref:





# Los Angeles Lakers Headquarters

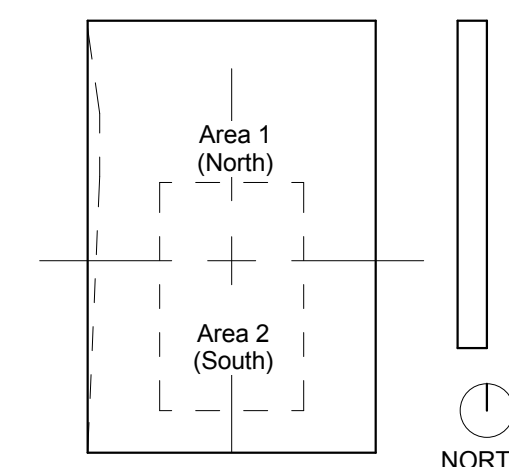
2275 Mariposa  
El Segundo, California 90245

Consultant

Professional Seal

| No. | Description                       | Date     |
|-----|-----------------------------------|----------|
| 1   | 50% CDs for Pricing               | 08/07/15 |
| 2   | Foundation & Utilities Permit     | 08/12/15 |
| 3   | Plan Check                        | 09/18/15 |
| 4   | Back-Check #1                     | 11/20/15 |
| 5   | Back-Check #2 - ASI 008           | 01/08/16 |
| 6   | Issued for Construction - ASI 010 | 01/22/16 |

**Key Plan**



Sheet Title

## General Coordination Plan

Project Number

|  |          |
|--|----------|
|  | CAD File |
|--|----------|

2014-013  
Sheet number

### G-003.1

1. PROTECT ALL GRAVITY LOAD BEARING STRUCTURAL ELEMENTS WITH CONTIGUITOUS FIREPROOFING ACCORDING TO NOTES ON DRAWING LS-101  
APPLICABLE UL DESIGNS :

|                           |          |
|---------------------------|----------|
| 2 HR COLUMNS              | UL# X790 |
| 2 HR FLOOR SLAB AND BEAMS | UL# D902 |
| 1 HR ROOF AND BEAMS       | UL# F730 |
2. ROOF DECK AT MAIN COURT, PRACTICE COURT AND ALL OPEN WEB JOISTS SHALL NOT BE FIREPROOFED.
3. COLUMNS THUS MARKED

SHALL BE PROTECTED WITH INTUMESCENT PAINT WHERE COLUMN IS NOT COVERED BY GYP ENCLOSURE (REFER TO DETAILS ON DRAWINGS A-381 THROUGH A-385)

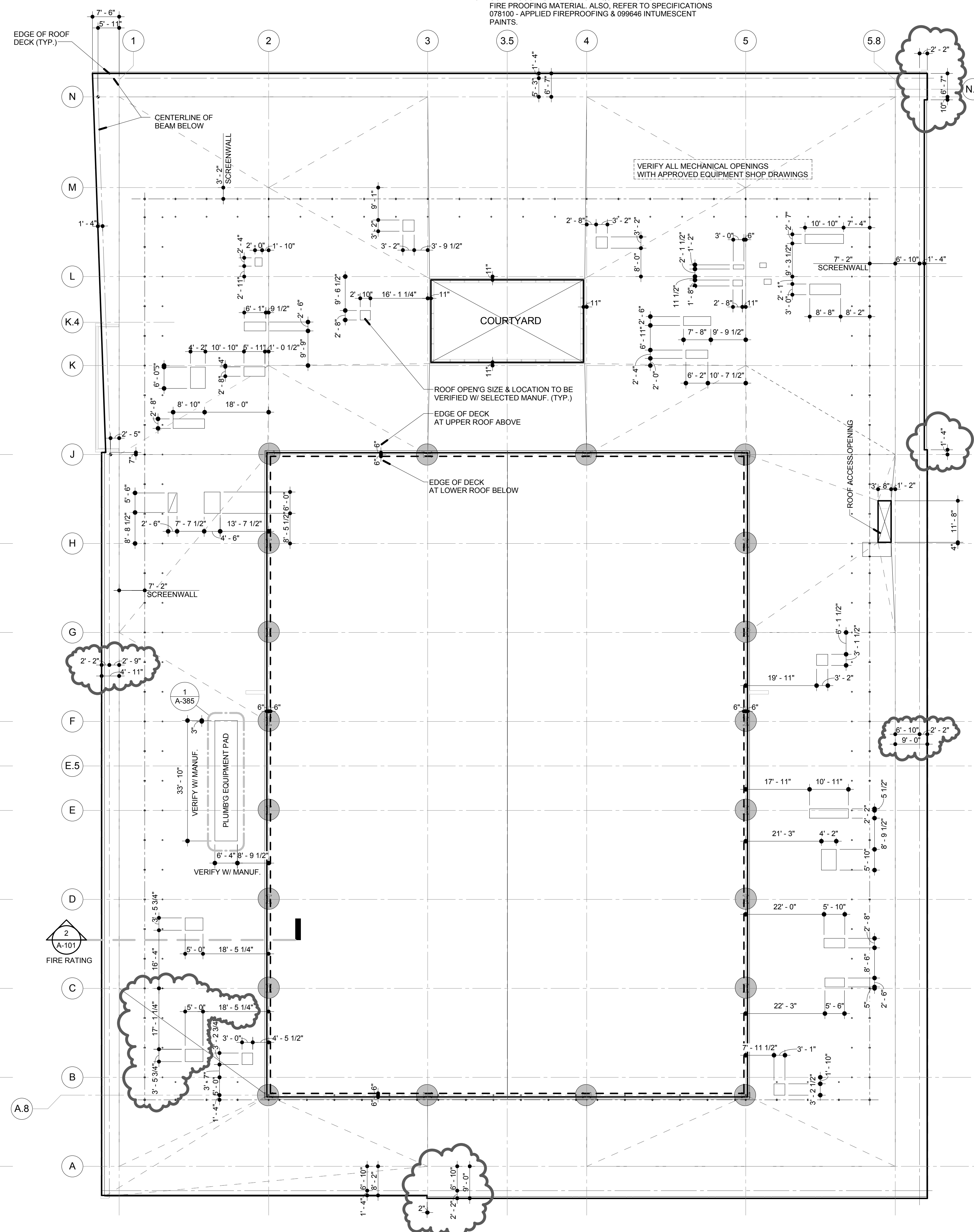
1 HR COLUMNS UJ # X606

4. BEAMS AT PERIMETER OF UPPER ROOF  
SHALL BE PROTECTED WITH INTUMESCENT PAINT  
(REFER TO DETAILS ON DRAWINGS A-381 THROUGH A-385)

1 HR BEAMS                                  UI # S601

5. IN REGARD TO THE STEEL FIRE PROOFING REFER TO 'FIRE PROOFING MEMO' DATED 01/08/16 FROM ROSSETTI. ALSO REFER TO 'FIRE RATINGS' 2/A-101.

6. CONTINUOUS INSPECTION IS REQUIRED FOR SPRAY TYPE OF FIRE PROOFING MATERIAL. ALSO, REFER TO SPECIFICATIONS 078100 - APPLIED FIREPROOFING & 099646 INTUMESCENT PAINTS.



|   |         |
|---|---------|
| 1 | G-003.1 |
|---|---------|

### Roof - Coordination Plan

Scale: 1/16" = 1'-0"  
Ref:

Ref

|   |         |
|---|---------|
| 2 | G-003.1 |
|---|---------|

## Level 2 - Coordination Plan

Scale: 1/16" = 1'-0"  
Ref: A-101

Ref: A-101



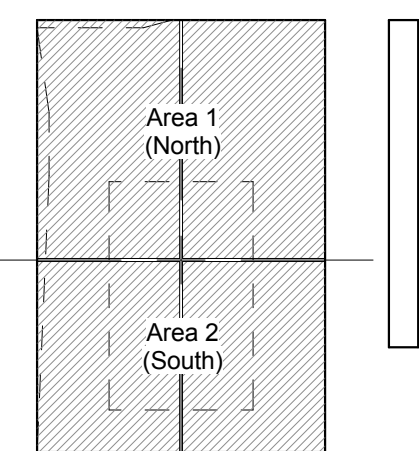
2275 Mariposa, El Segundo, California 90245

Consultant

Professional Seal

| No. | Description                       | Date     |
|-----|-----------------------------------|----------|
| 1   | 50% CD'S For Pricing              | 08/07/15 |
| 2   | Foundation & Utilities Permit     | 08/12/15 |
| 3   | Plan Check                        | 09/18/15 |
| 4   | Back Check #1                     | 11/20/15 |
| 5   | Back Check #2 - ASI 008           | 01/08/16 |
| 6   | Issued for Construction - ASI 010 | 01/22/16 |

**Key Plan**



Sheet Title

### Level 1 & 2 Slab Depression Plans

Project Number

|  |          |
|--|----------|
|  | CAD File |
|--|----------|

|              |
|--------------|
| 2014-013     |
| Sheet number |

**G-004**





| No. | Description                       | Date     |
|-----|-----------------------------------|----------|
| 4   | Back Check #1                     | 11/20/15 |
| 5   | Back Check #2 - ASI 008           | 01/08/16 |
| 6   | Issued for Construction - ASI 010 | 01/22/16 |

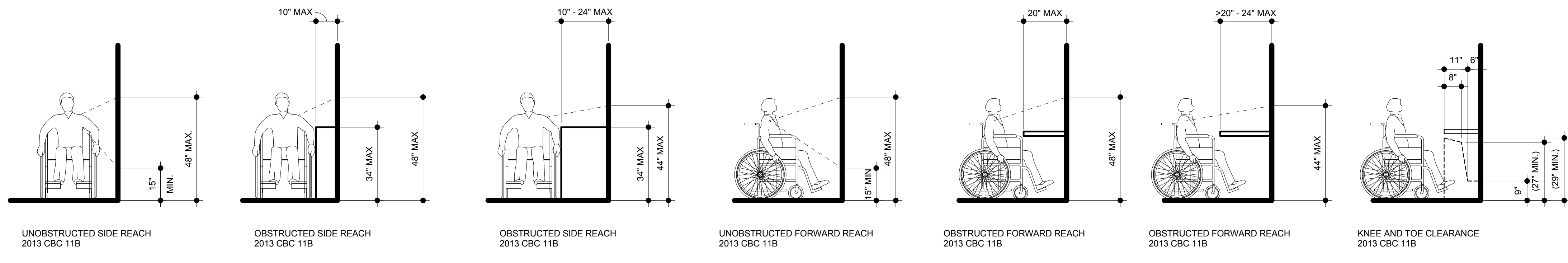
### Material Keynotes:


## Standard & Barrier Free Mounting Heights

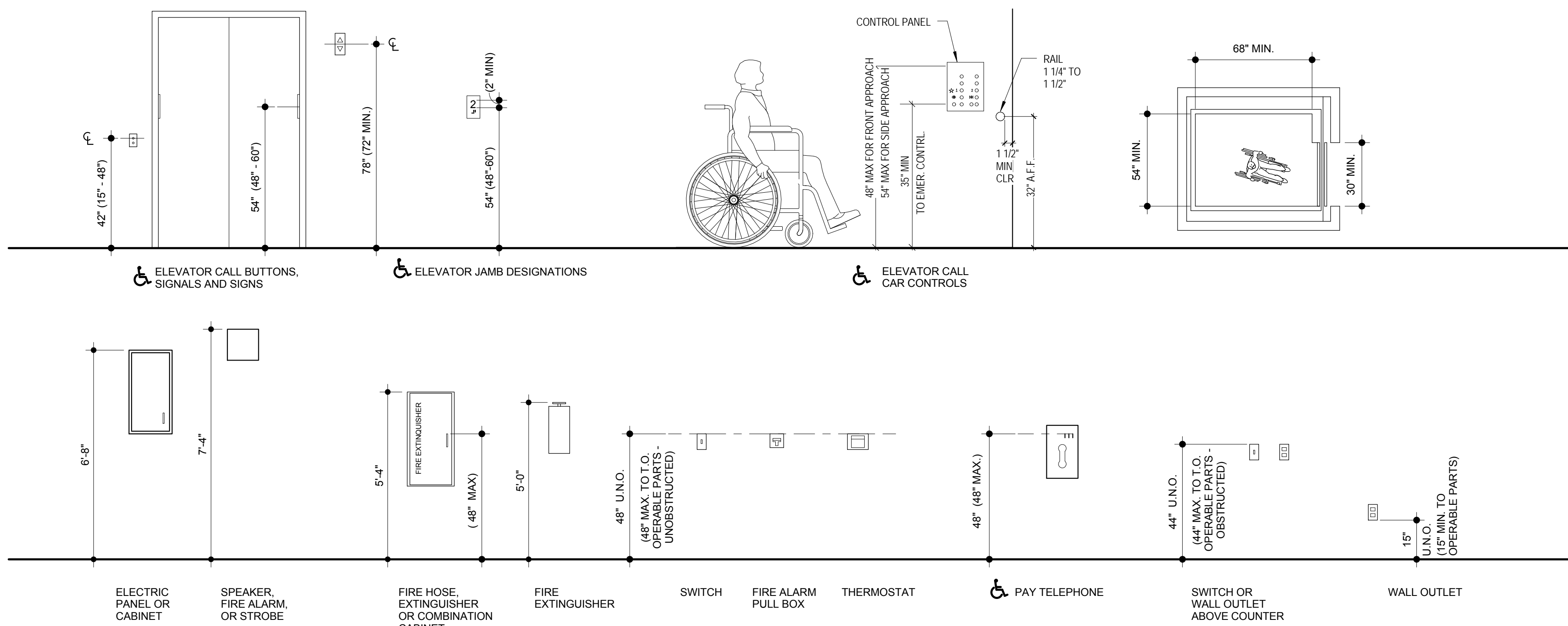
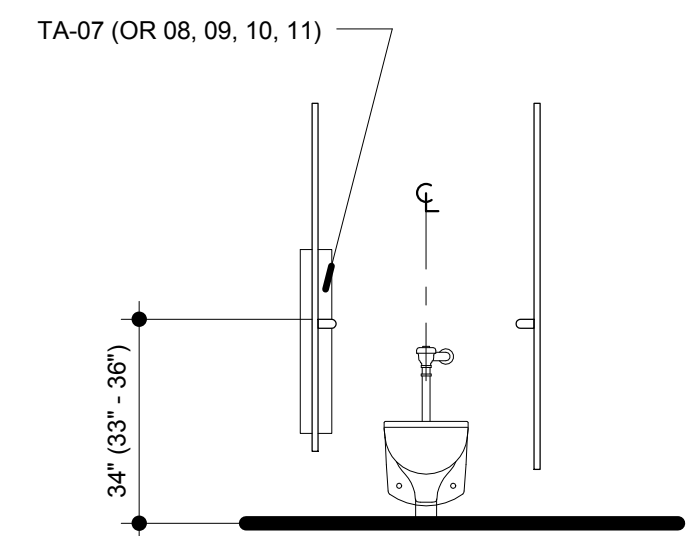
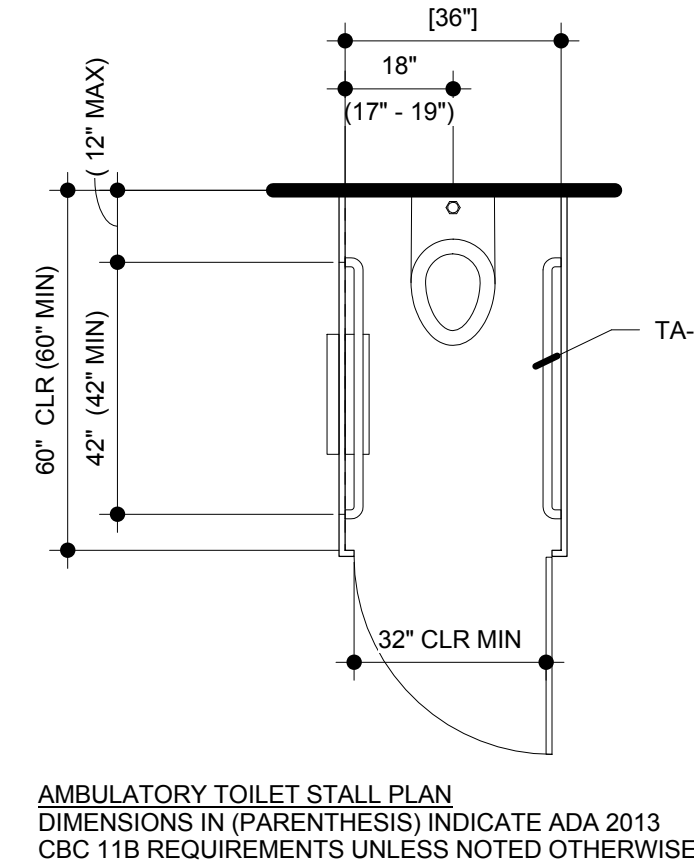
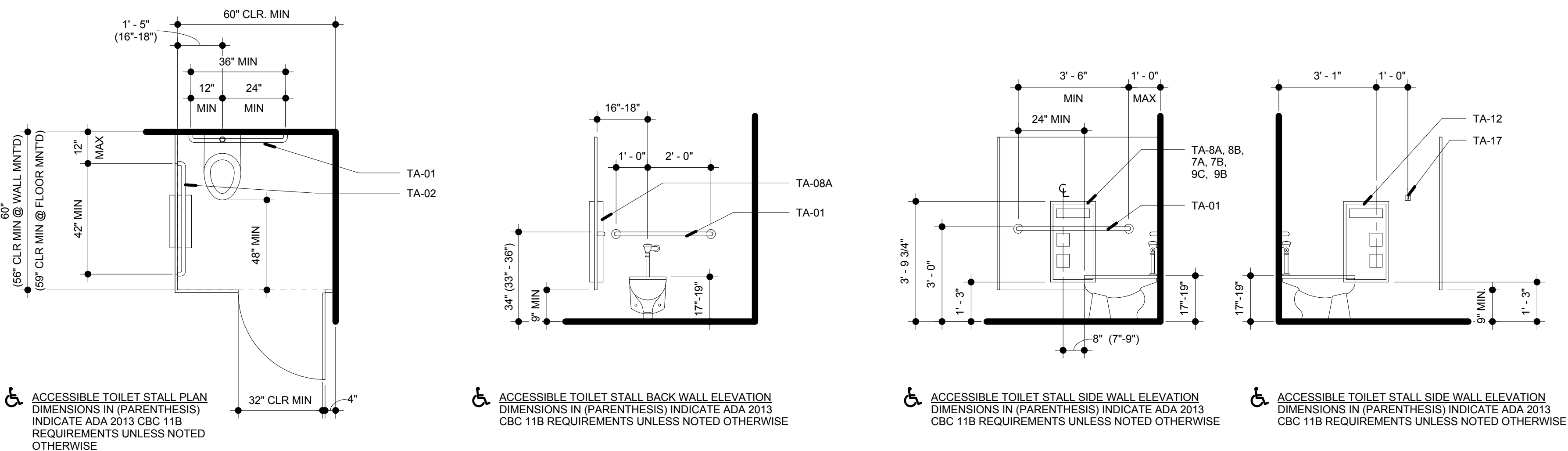
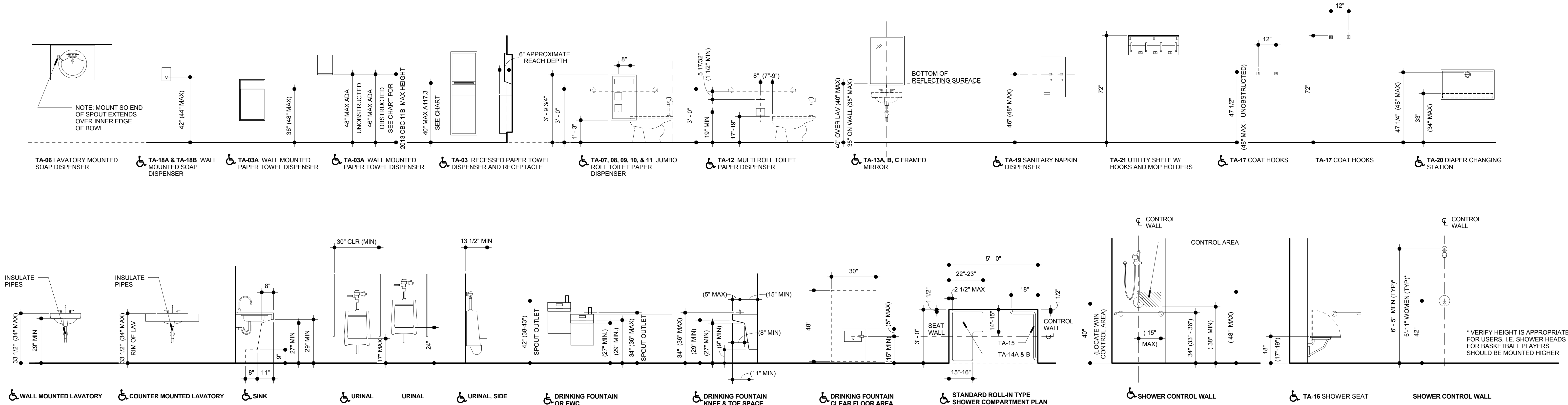
NOTES:

 WHERE ACCESSIBLE DESIGN IS INDICATED ON PLAN OR REQUIRED BY CODE, USE THE MOUNTING HEIGHTS AS SHOWN BELOW, UNLESS OTHERWISE NOTED ON DRAWINGS.

DIMENSIONS IN (PARENTHESES) INDICATE ALLOWABLE RANGE PER ADA 2013 CBC 11B.



| MAXIMUM REACH DEPTH AND HEIGHT<br>PAPER TOWEL DISPENSERS AND HAND DRYERS<br>ADA 2013 CBC 11B. |      |     |     |     |     |     |  |
|---|------|-----|-----|-----|-----|-----|---|
| MAXIMUM REACH DEPTH   | 0.5' | 2'  | 5'  | 6'  | 9'  | 11' |   |
| MAXIMUM REACH HEIGHT  | 48"  | 46" | 42" | 40" | 36" | 34" |   |



| TOILET ACCESSORY SCHEDULE (Section 102800) |              |   |                 |             |
|--|--------------|---|-----------------|-------------|
| CODE                                       | MANUFACTURER | DESCRIPTION   | PRODUCT #       | REMARKS     |
| TA-1                                       | BOBRICK      | GRAB BAR 36"  | B-68640 X35     |             |
| TA-2                                       | BOBRICK      | GRAB BAR 42"  | B-6806 9/4 X2   |             |
| TA-3                                       | BOBRICK      | RECESSED PAPER TOWEL DISPENSER/WASTE RECEPTACLE   | B-3803          |             |
| TA-3A                                      | BOBRICK      | RECESSED PAPER TOWEL DISPENSER  | B-35903         |             |
| TA-4                                       | BOBRICK      | PARTITION MTD TOILET PAPER/ SEAT COVER DISPENSER (LEFT; SERVES 1 STALL)                           | B-3479          |             |
| TA-5                                       | GAMCO        | RECESSED FACIAL WIPER DISPENSER   | B-826.18        |             |
| TA-6                                       | BOBRICK      | COUNTER TOP MTD SOAP DISPENSER  | B-826.18        |             |
| TA-7                                       | BOBRICK      | RECESSED TOILET PAPER/ SEAT COVER DISPENSER + NAPKIN RECEPTACLE (LEFT)                            | B-3374          |             |
| TA-7B                                      | BOBRICK      | RECESSED TOILET PAPER/ SEAT COVER DISPENSER + NAPKIN RECEPTACLE (RIGHT)                           | B-3374S         |             |
| TA-8A                                      | BOBRICK      | PARTITION MTD TOILET PAPER/ SEAT COVER DISPENSER + NAPKIN RECEPTACLE (SERVES 2 STALLS)            | B-357           |             |
| TA-8B                                      | BOBRICK      | PARTITION MTD TOILET PAPER/ SEAT COVER DISPENSER + NAPKIN RECEPTACLE (ADA RIGHT; SERVES 2 STALLS) | B-357I          |             |
| TA-9A                                      | BOBRICK      | PARTITION MTD TOILET PAPER/ SEAT COVER DISPENSER (SERVES 2 STALLS)                                | B-347           |             |
| TA-9B                                      | BOBRICK      | PARTITION MTD TOILET PAPER/ SEAT COVER DISPENSER (ADA LEFT; SERVES 2 STALLS)                      | B-347IS         |             |
| TA-9C                                      | BOBRICK      | PARTITION MTD TOILET PAPER/ SEAT COVER DISPENSER (ADA RIGHT; SERVES 2 STALLS)                     | B-347I          |             |
| TA-10A                                     | BOBRICK      | RECESSED TOILET PAPER/ SEAT COVER DISPENSER (LEFT)  | B-3474          |             |
| TA-10B                                     | BOBRICK      | RECESSED TOILET PAPER/ SEAT COVER DISPENSER (RIGHT)   | B-3474S         |             |
| TA-11                                      | BOBRICK      | SURFACE MTD SINGLE TOILET PAPER DISPENSER   | B-344           |             |
| TA-12                                      | BOBRICK      | SURFACE MTD SPARE TOILET ROLL HOLDER  | B-345           |             |
| TA-13A                                     | BOBRICK      | FRAMED MIRROR (Full H Dressing for Misc Lockers)  | B-290 2484      |             |
| TA-13B                                     | BOBRICK      | FRAMED MIRROR (24"W/48"H Above Wall Mtd Sinks - Exhibition Restrooms)                             | B-290 2484      |             |
| TA-13C                                     | BOBRICK      | FRAMED MIRROR (24"W/48"H Above Undermount Sinks in Single Toilet Rooms)                           | B-290 2448      |             |
| TA-14A                                     | BOBRICK      | SHOWER FOLDING SEAT (LEFT)  | B-518           |             |
| TA-14B                                     | BOBRICK      | SHOWER FOLDING SEAT (RIGHT)   | B-517           |             |
| TA-15                                      | BOBRICK      | SHOWER L-SHAPED GRAB BAR  | B-6861.99       |             |
| TA-16                                      | BOBRICK      | SHOWER CURTAIN ROLL WITH CONCEALED MOUNTING   | B-6047          | SIZE VARIES |
| TA-17                                      | BOBRICK      | DOUBLE ROBE HOOK WITH CONCEALED MOUNTING  | B-64127         |             |
| TA-18A                                     | SIMPLEHUMAN  | WALL MTD TRIPLE SLL SOAP DISPENSER (1 UNIT ALL ALL LAKERS PLAYERS SHOWERS)                        | BT1029          | OF/OI       |
| TA-18B                                     | SMEDBO       | WALL MTD TRIPLE SOAP DISPENSER  | FK259           | OF/OI       |
| TA-19                                      | BOBRICK      | RECESSED NAPKIN/TAMPON VENDOR (S 50)  | B-37063 50      |             |
| TA-20                                      | KOALA KARE   | WALL MTD BABY CHANGING TABLE  | BK200-015S GREY |             |
| TA-21                                      | BOBRICK      | UTILITY SHELF WW/ MOP/ BROOM HOLDER   | B-239           |             |

GENERAL NOTES:

1. UON, ALL ACCESSORIES ARE PROVIDED & INSTALLED BY GC.
2. GC TO PROVIDE BLOCKING AS NEEDED FOR ALL ACCESSORIES.
3. GC RESPONSIBLE FOR FURRING-OUT WALLS AS NEEDED TO ACCOMMODATE ALL ACCESSORIES.
4. GC TO REFER TO MANUFACTURER'S DATA SHEETS FOR INSTALLATION HEIGHTS.



