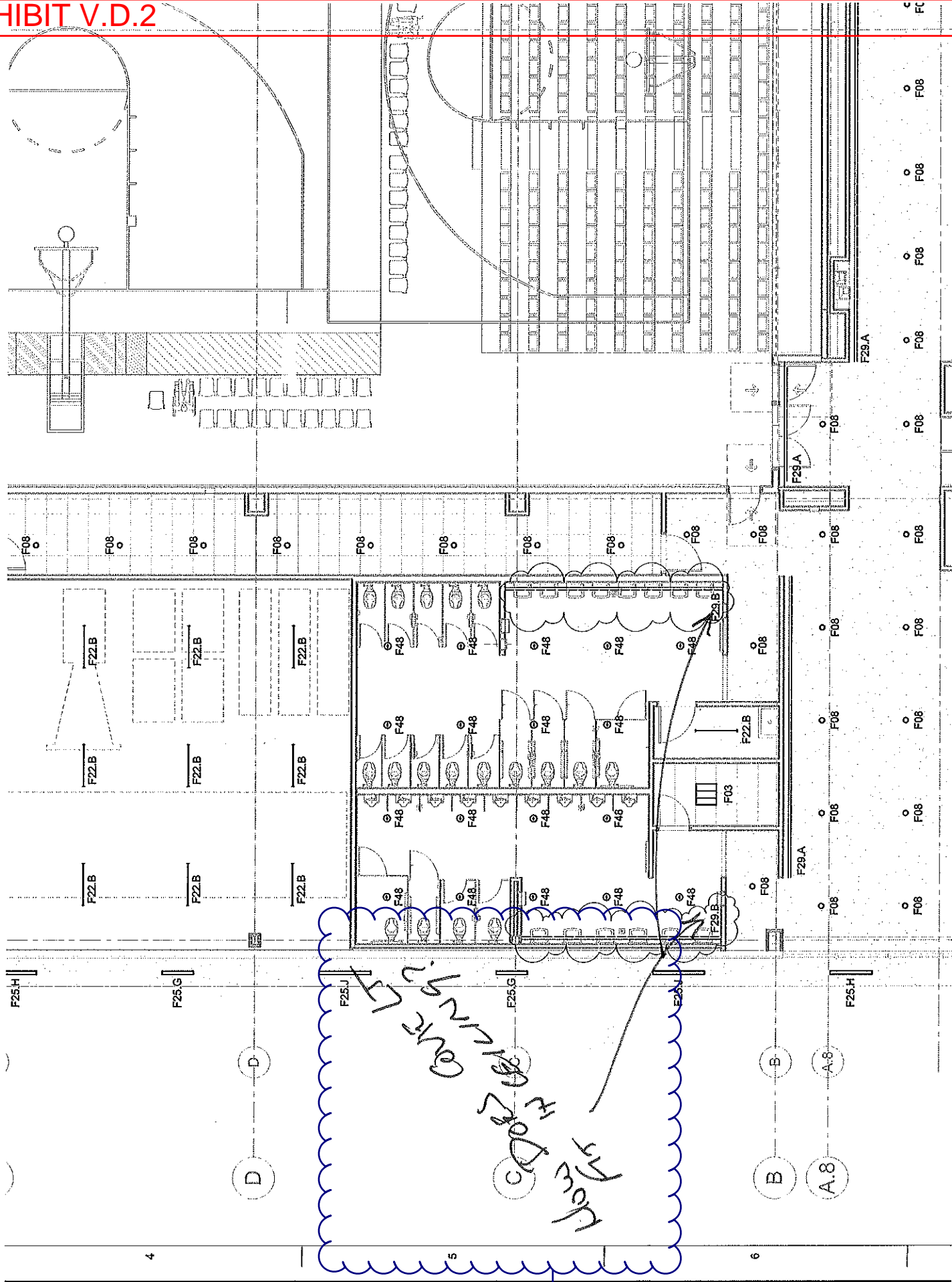


B

Gordon's Handwriting
Reads:
Size Does Not Match
Specification

FINISH	CODE	ITEM	SPEC #	DESCRIPTION
ACT	1	ACOUSTICAL CEILING TILE	09 51 13	ARMSTRONG
				CIRRUS 589
				UNPERFORATED
				513 WHITE
				2'X2'X5/8"
				ARMSTRONG SILHOUETTE 1/8" REVEAL GRID
ACT	2	ACOUSTICAL CEILING TILE	09 51 13	ARMSTRONG
				OPTIMA VECTOR 3906
				UNPERFORATED
				WHITE
				2' X 6' X 7/8"
				PRELUDE 15/16" SUSPENSION SYSTEM
ACT	3	NOT USED		
ACT	4	ACOUSTICAL CEILING TILE	09 51 13	ARMSTRONG
				KITCHEN ZONE
				673
				WHITE
				2'X2'X5/8"
				PRELUDE 15/16" WHITE

SIZE DOES NOT
MATCH SPEC



Gordon's Handwriting Reads:
How Does Light Fit In Ceiling?

Submittal Data Sheet S-1233D-LF
January 2015

NEXT GENERATION HIGH LOW

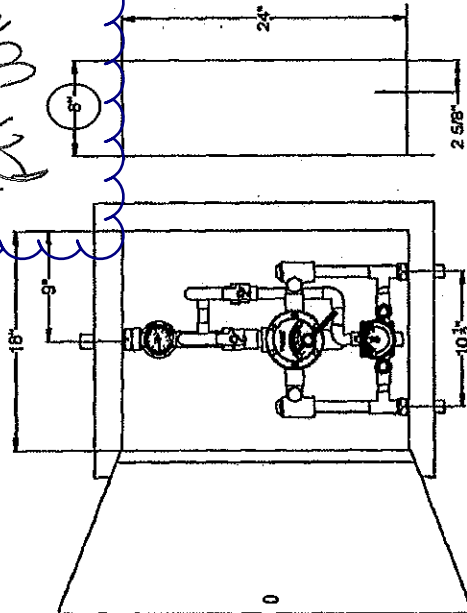
TM-186-520B-LF STSL- REC

Cabinet Assembly

- Large Type TM Thermostatic water mixing valve, adjustable high temperature limit stop*, inlet checkstops, wall support, outlet ball valve
- Small Type TM Thermostatic water mixing valve, adjustable high temperature limit stop*, inlet checkstops, outlet ball valve
- 3/4" inlets, 1" outlet (19mm X 25mm)
- 1 GPM (3.8 l/min) minimum flow capacity
- Color-coded dial thermometer (0 to 140°F, -10 to 60°C)
- Inlet manifold piping
- Locking temperature regulators
- Recessed cabinet with hinged door and cylinder lock
- Factory assembled and tested

SYSTEM

ECO-MIX™



This product is certified to meet Low Lead requirements of wetted surface area containing less than 0.25% lead by weight

OPTIONS:

- ___ SUFFIX CP - Chrome plated (Material finish may vary)
- ___ SUFFIX BWE REC - Steel cabinet, baked white enamel recessed
- X** SUFFIX STSL REC - Stainless Steel recessed cabinet
- ___ SUFFIX BWE EXP - Exposed cabinet, baked white enamel
- ___ SUFFIX STSL EXP - Exposed cabinet, Stainless steel
- ___ SUFFIX SEMI - Semi-recessed frame 4" deep
- ___ SUFFIX VIEW - View port on door
- ___ SUFFIX TC - Test connection on outside of exposed cabinets only and shipped loose
- ___ SUFFIX IT - Inlet thermometers on outside of exposed cabinets only and shipped loose

MINIMUM FLOW (GPM) (l/min)	SYSTEM PRESSURE DROP (PSIG)											
	5	10	15	20	25	30	35	40	45	50	PSI	
	.3	.7	.97	1.4	1.7	2.1	2.4	2.8	3.1	3.4	BAR	
1.0 (3.8)	19	29	38	45	51	56	62	68	72	75	GPM	
	72	110	144	170	193	212	235	257	272	284	l/min	

Valve assembly is ASSE 1017 Certified



Valve assembly is CSA Certified



NOTE: Flowrates will vary depending on existing field conditions. Leonard Valve Company always recommends using CASPAK® sizing software for proper valve sizing and model number applications.

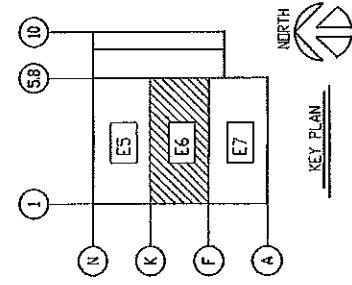
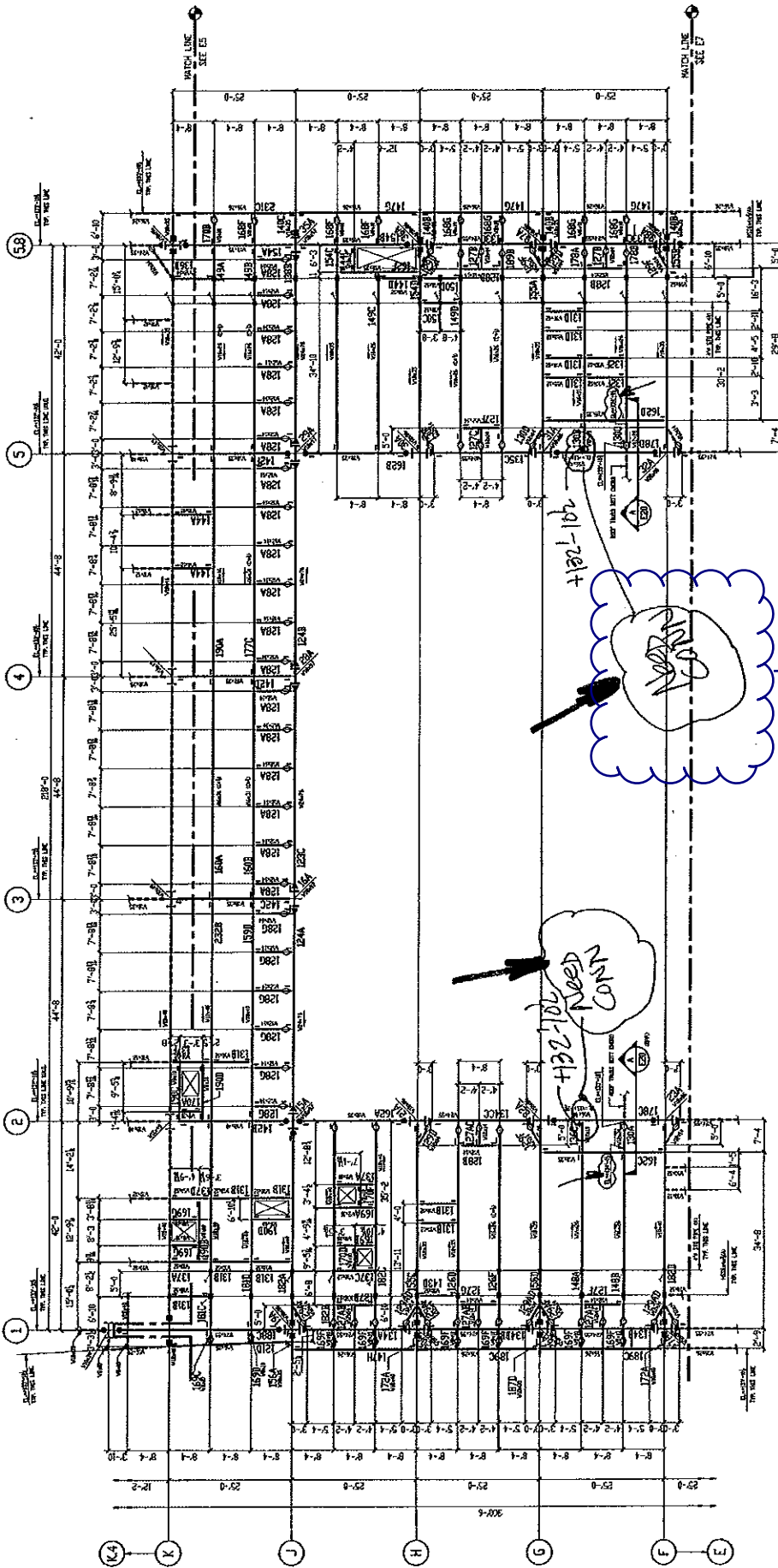
CAUTION! All thermostatic water mixing valves have limitations. They will NOT provide the desired accuracy outside of their flow capacity range. Consult the Flow Capacity Chart and DO NOT OVERSIZE. Minimum flow must be no less than as indicated.

Note: Leonard Valve Company reserves the right of product, or design modifications without notice or obligation.

*NOTE: A limit stop, set for 120°F (49°C), is simply a mechanical setting to prevent excessive handle rotation. If incoming water is hotter than 150°F (65.5°C), the temperature of the factory test, the valve when turned to full HOT may deliver water in excess of 120°F and the limit stop MUST BE RESET BY THE INSTALLER

Gordon's Handwriting
Reads:
Does Not Fit In Wall

MCC-SK-RFI 152-1



Gordon's Handwriting Reads:
Need Connection



PARTIAL LOWER ROOF FRAMING PLAN

- 1. TALL DIM. VERTICAL REF. PLAN
- 2. DIM. INDICATES MEMBER FRAME CORN. SEE 1/07.
- 3. DIM. INDICATES BEAM FRAME CORN.
- 4. DIM. INDICATES RIGID JOINT CORN. SEE 2/07, 3/07, 4/07, 5/07.
- 5. DIM. INDICATES RIGID JOINT CORN. SEE 6/07.
- 6. DIM. INDICATES BRACES HORIZONTAL PLAN.

REVISION LOG	
DATE	DESCRIPTION
12/7/15	1. TALL DIM. VERTICAL REF. PLAN
12/7/15	2. DIM. INDICATES MEMBER FRAME CORN. SEE 1/07.
12/7/15	3. DIM. INDICATES BEAM FRAME CORN.
12/7/15	4. DIM. INDICATES RIGID JOINT CORN. SEE 2/07, 3/07, 4/07, 5/07.
12/7/15	5. DIM. INDICATES RIGID JOINT CORN. SEE 6/07.
12/7/15	6. DIM. INDICATES BRACES HORIZONTAL PLAN.

OCE

Orange County Erection, Inc.
217 E. Main Street
Orange, CA 92667
Phone: (714) 952-0000
Fax: (714) 952-0001
E-Mail: info@oceerect.com
Website: www.oceerect.com
CONTRACTOR: MOBLEY CONSTRUCTION COMPANY
SITE ADDRESS: 2275 MARIPOSA, #3 SEQUOIA, CA
DRAWN BY: JF
CHECKED BY: JF
DATE: 12/7/15
SCOPE: PARTIAL LOWER ROOF FRAMING PLAN
PROJECT NO.: 15-019
RELEASE NO.: 15-019
FOIA: E6

