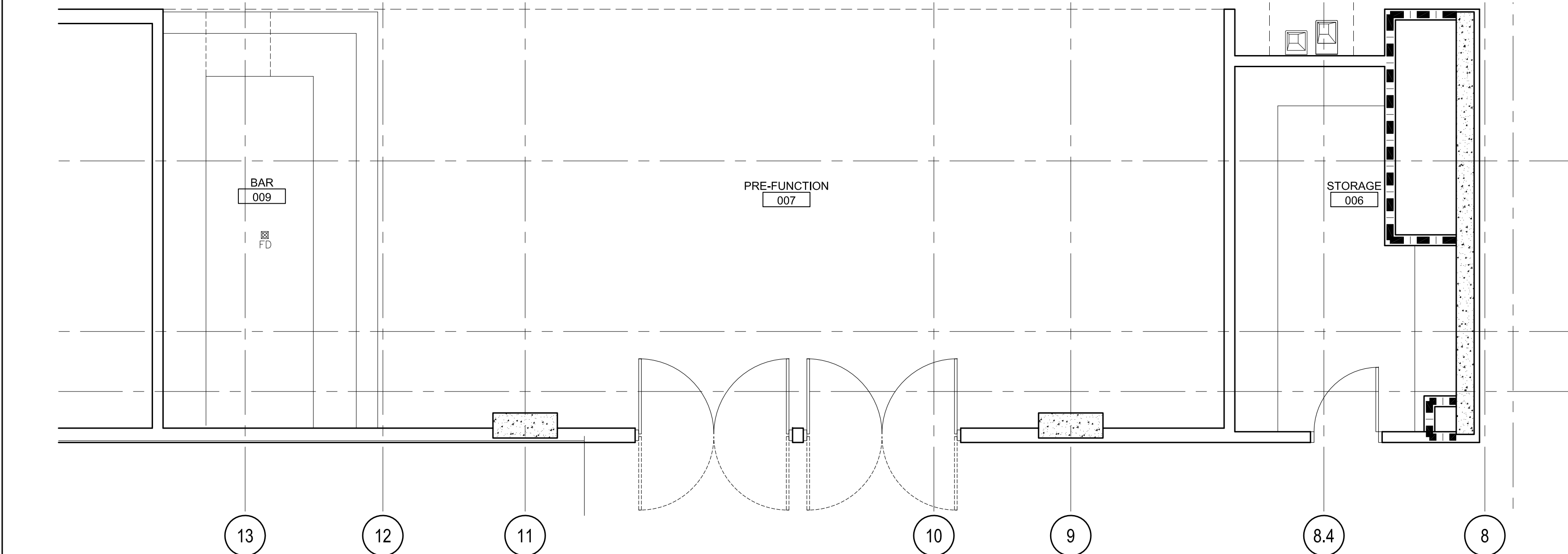
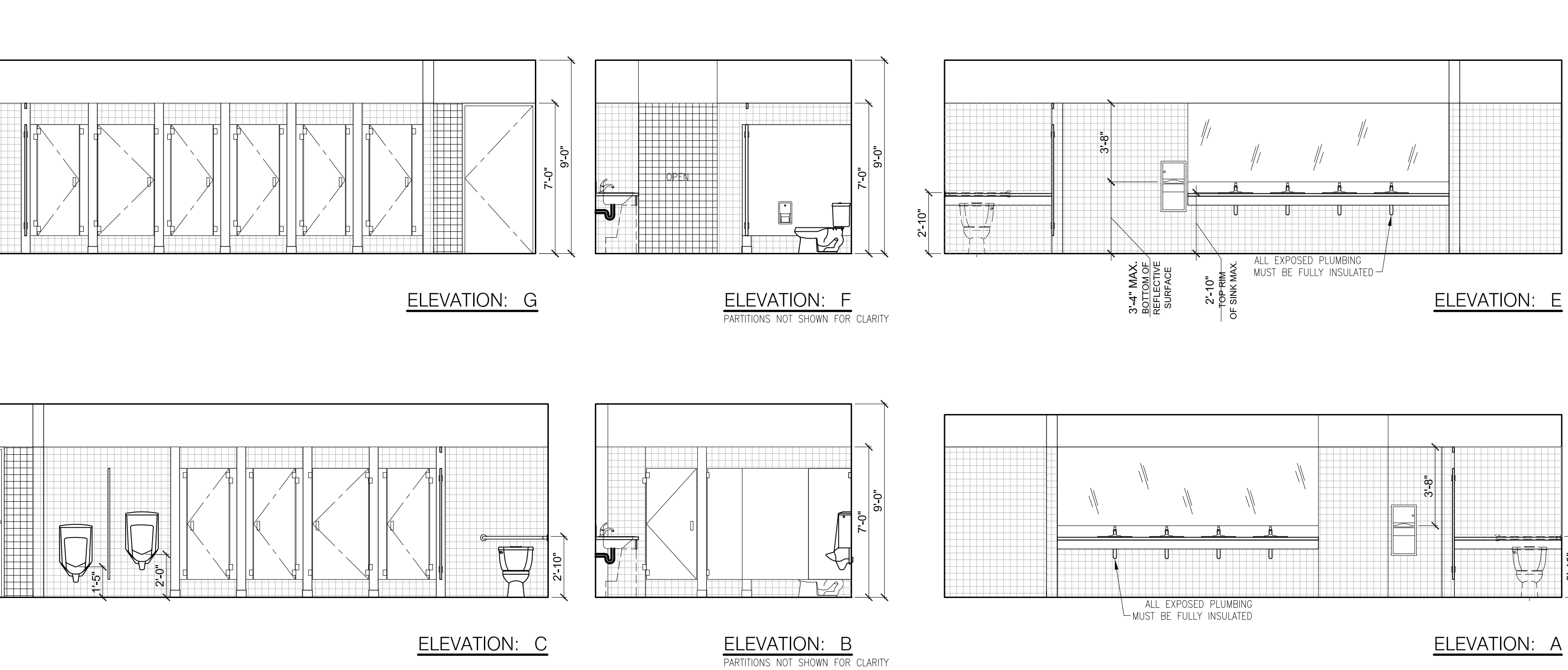


PRE-FUNCTION
GROUND FLOOR RCP



PRE-FUNCTION
GROUND FLOOR

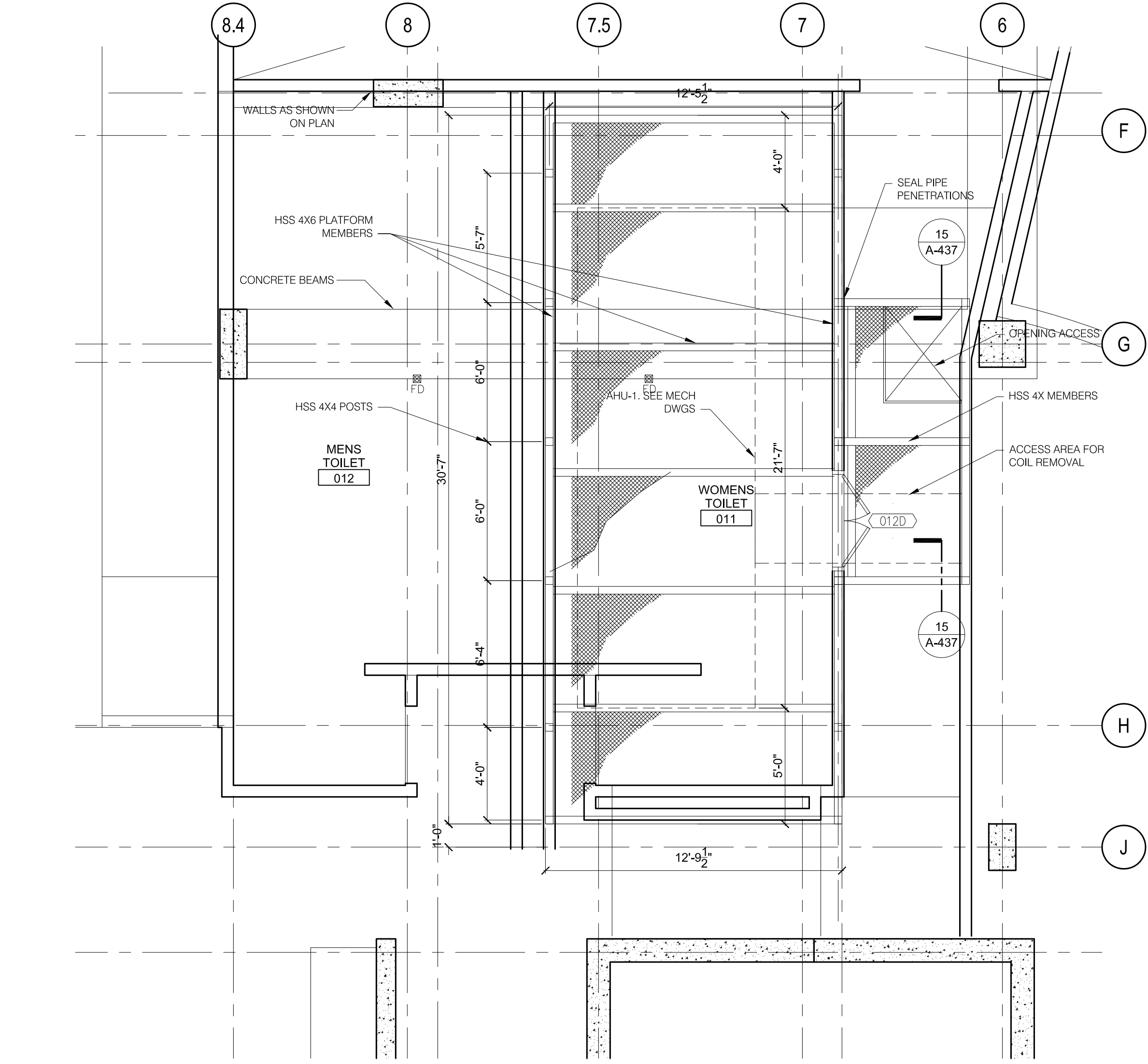


PUBLIC TOILET - ELEVATIONS
GROUND FLOOR

EQUIPMENT LEGEND

LOCKERS (25)	SEE PLUMBING DRAWINGS - URINAL (19)	RECESSED TOILET PAPER DISPENSER W/ FEMININE NAPKIN DISPOSAL (13)	36"W x 40"H MIRROR W/ SHELF (7)	WALL MOUNTED SOAP DISPENSER (1)
HAND DRYER, BOBRICK (26)	WALL MOUNTED SHOWER HEAD (20)	GRAB BAR - 36" (14)	SMALL MIRROR (8)	TOILET PAPER DISPENSER W/ SEAT COVER DISPENSER (2)
DRINKING FOUNTAIN (27)	WALL MOUNTED HAND HELD SHOWER (21)	GRAB BAR - 42" (15)	SEAT COVER DISPENSER (9)	SANITARY NAPKIN RECEPTACLE (3)
MOP SINK (28)	BABY CHANGING STATION (22)	GRAB BAR - FULL RETURN 42"X36" (16)	FEMININE NAPKIN DISPENSER (10)	PAPER TOWEL DISPENSER/ WASTE RECEPTACLE- WALL RECESSED (4)
	DYSON HAND DRYER (23)	FOLDING SEAT (17)	COAT HOOK (11)	PARTITION, STAINLESS STEEL WALL HUNG (5)
		SEE PLUMBING DRAWINGS - SINK (18)	CURTAIN ROD (12)	MIRROR (6)

AHU-1 ACCESS - SECTION
GROUND

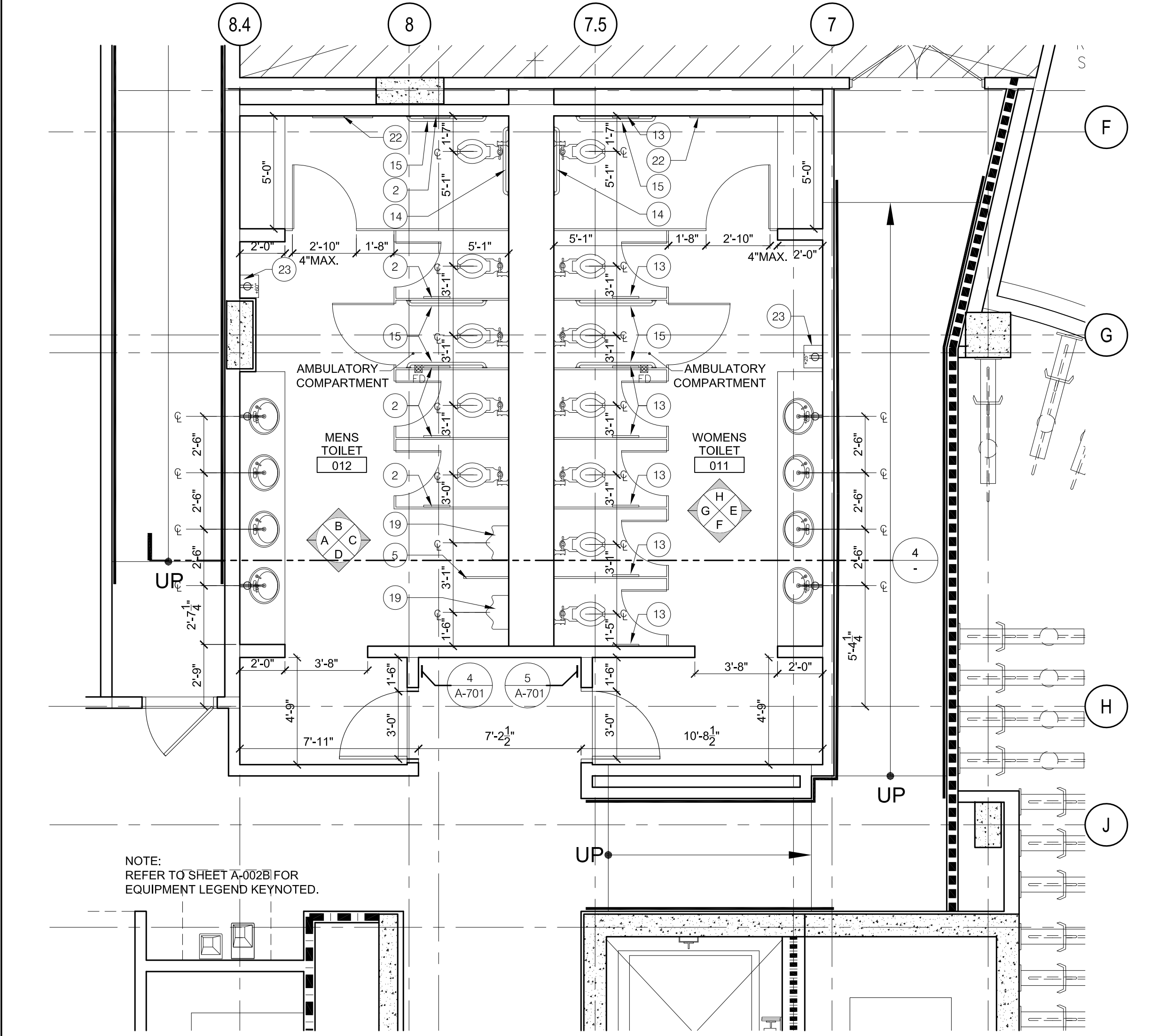


PUBLIC TOILETS AREA - PLATFORM FOR AHU-1
GROUND FLOOR RCP

GENERAL GRAPHIC LEGEND:

4 HOUR RATED CONC WALL	ACCENT MIRROR LIGHT- ML-1	ML-1
4 HOUR RATED CMU WALL	ACCENT LIGHT- AC-5	AC-5
4 HOUR RATED (E) CONC. WALL	ACCENT LIGHT- AC-1 THROUGH AC-4	AC-1
NON-RATED WALLS	PIN LIGHTS LIGHTS - PL-1 THROUGH PL-3	PL-1
2 HOUR RATED WALLS	DOWN LIGHTS - DL-1 THROUGH DL-16	DL-1
1 HOUR RATED WALLS	SPECIALTY PENDANT - 300W	SP1
GFRC PANEL WALL SYSTEM		
REFER TO SHEET A-601 FOR ALL WALL TYPES		

PUBLIC TOILETS
GROUND FLOOR RCP



PUBLIC TOILETS
GROUND FLOOR

SURFACE WALL MOUNTED - 50W	CEILING HEIGHT ABOVE FINISH FLOOR
SURFACE MOUNTED T8 - 2X28 W	LAY-IN ACOUSTICAL TILE CEILING
PENDANT MOUNTED T8- 2X28 W	SUSPENDED GYPSUM BOARD CEILING
SURFACE MOUNTED- SF-1	NO CEILING; OPEN TO STRUCTURE ABOVE
2'X4' FLUORESCENT - DC-2 OR DC-4	REFER TO SPECS DETAILS FOR ACCESS HATCH TYPES
2'X2' FLUORESCENT - DC-1 OR DC-3	

REVISIONS	DATE	BY	CHKD
REVISION 01	05/07/2015	ML	SC
REVISION 02	09/04/2015	ML	SC
REVISION 03	10/20/2015	ML	SC
REVISION 04	05/27/2016	ML	SC



howard laks architects
1545 hewlett street
santa monica, ca 90401
voice : 310-393-4465
fax : 310-393-2230

CONSULTANTS

710 WILSHIRE BOULEVARD
MIXED-USE HOTEL PROJECT
SANTA MONICA - CALIFORNIA 90401
ENLARGED PUBLIC TOILET ROOM PLANS

DRAWN	SKH / SC
CHECKED	HLA
APPROVED	-
SCALE	AS NOTED
SHEET	A-253
DATE	June 25, 2013
PROJECT NUMBER	HLA 0000000-00000