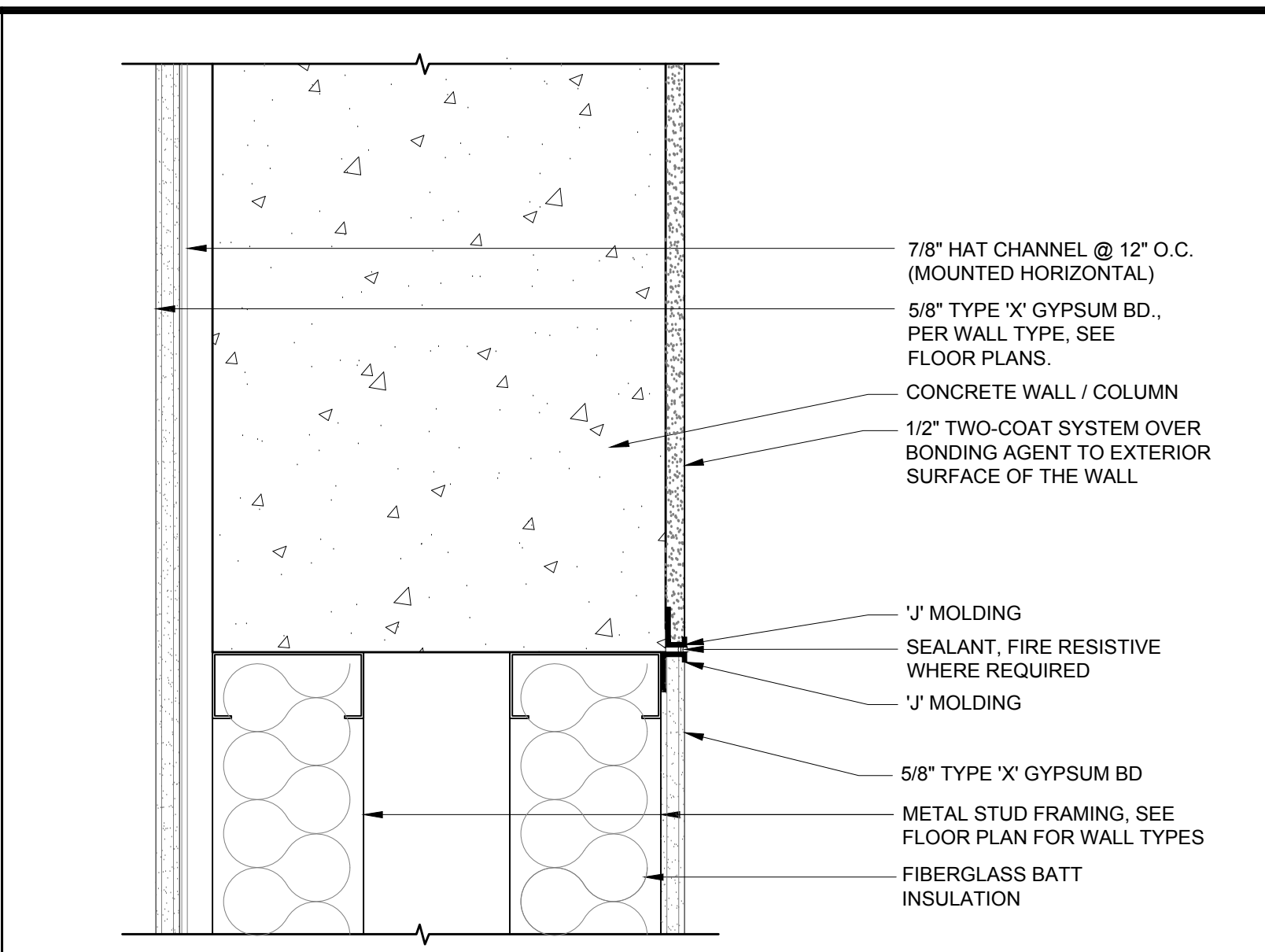
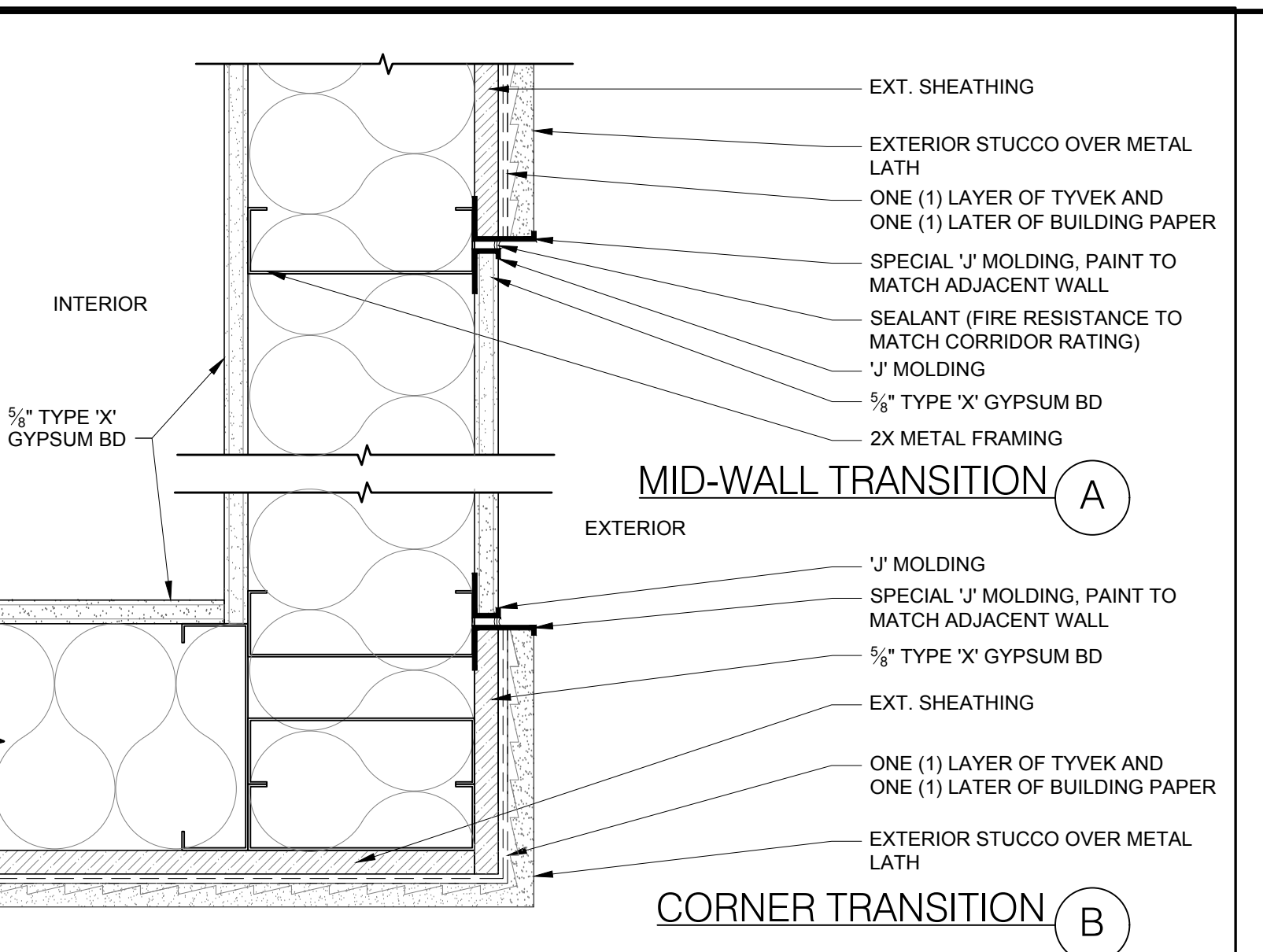


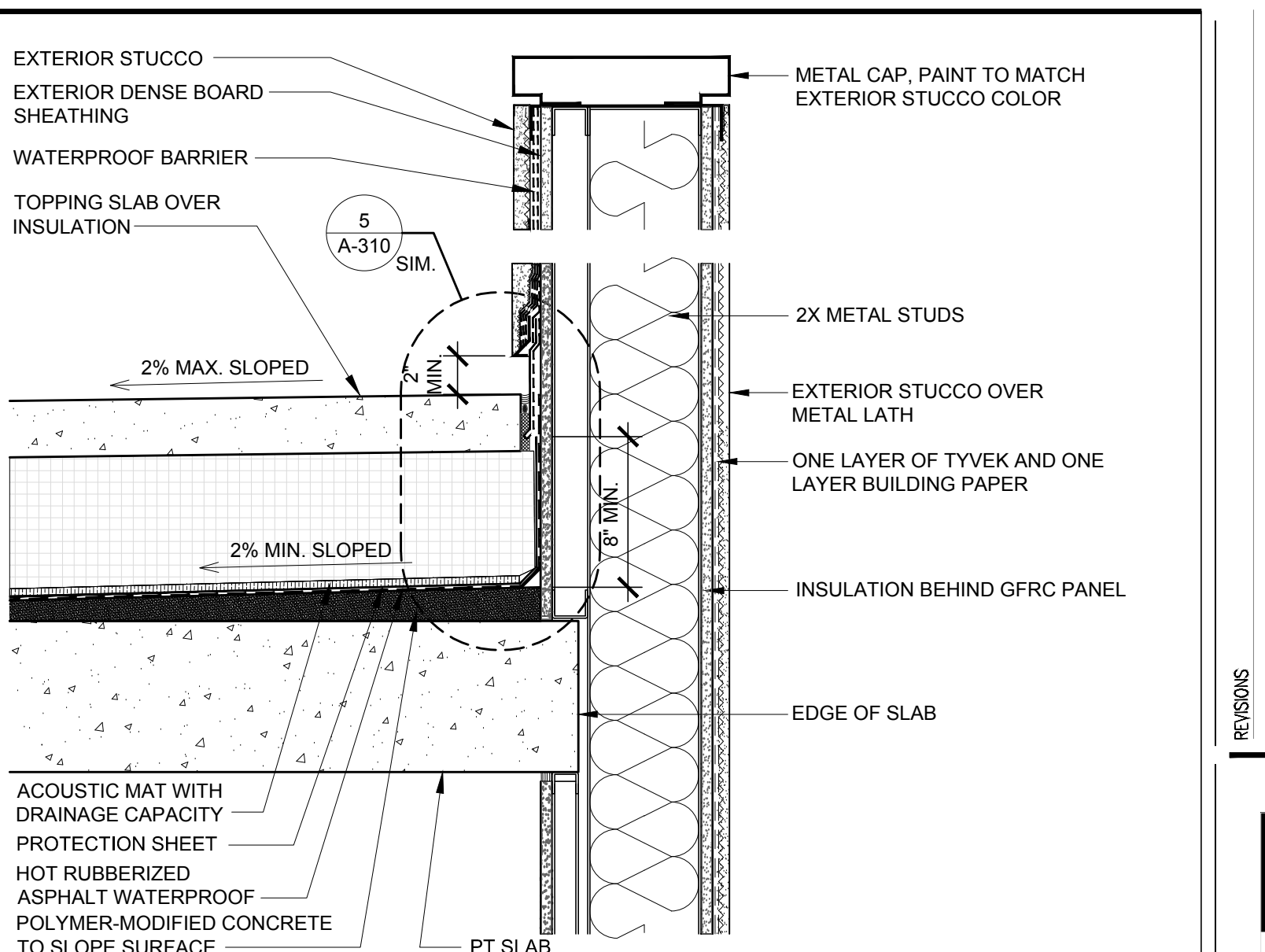
**HORIZONTAL CONTROL JOINT @ EXTERIOR STUCCO**  
 3" = 1'-0" 16



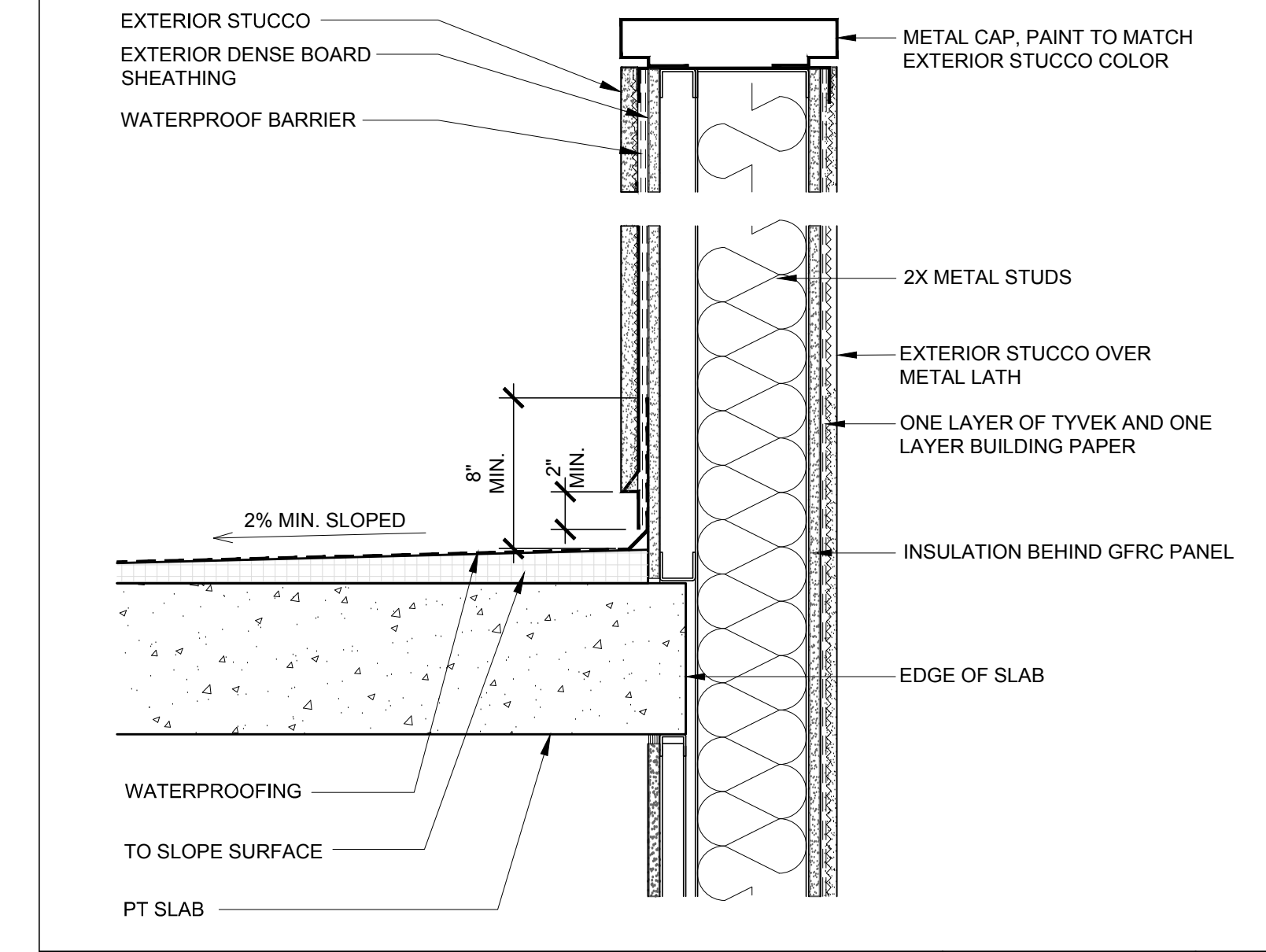
**EXT STUCCO TO GYP BD FINISH TRANSITION DETAILS**  
 3" = 1'-0" 12



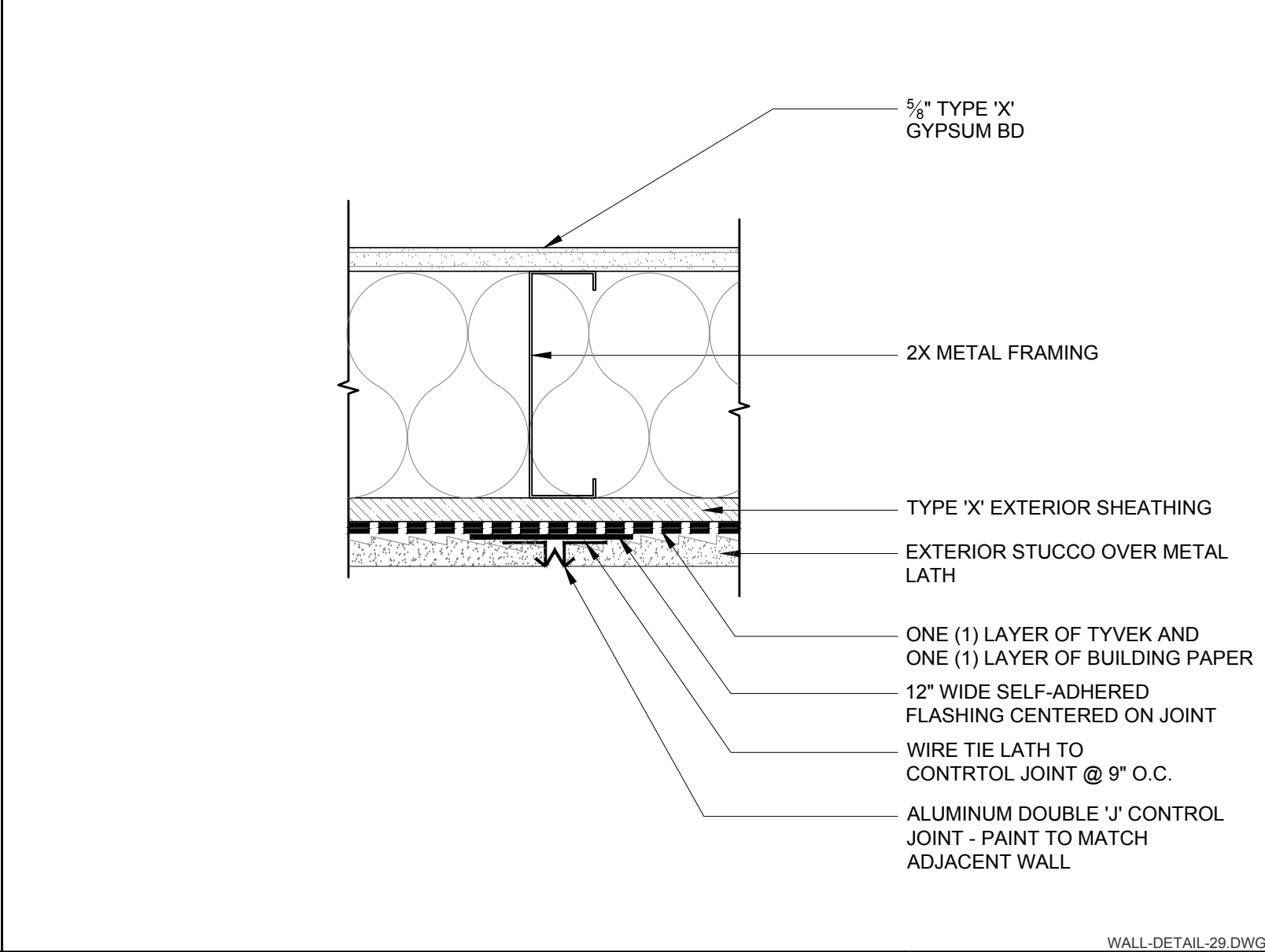
**EXT STUCCO TO GYP BD FINISH TRANSITION DETAILS - PLAN VIEW**  
 3" = 1'-0" 8



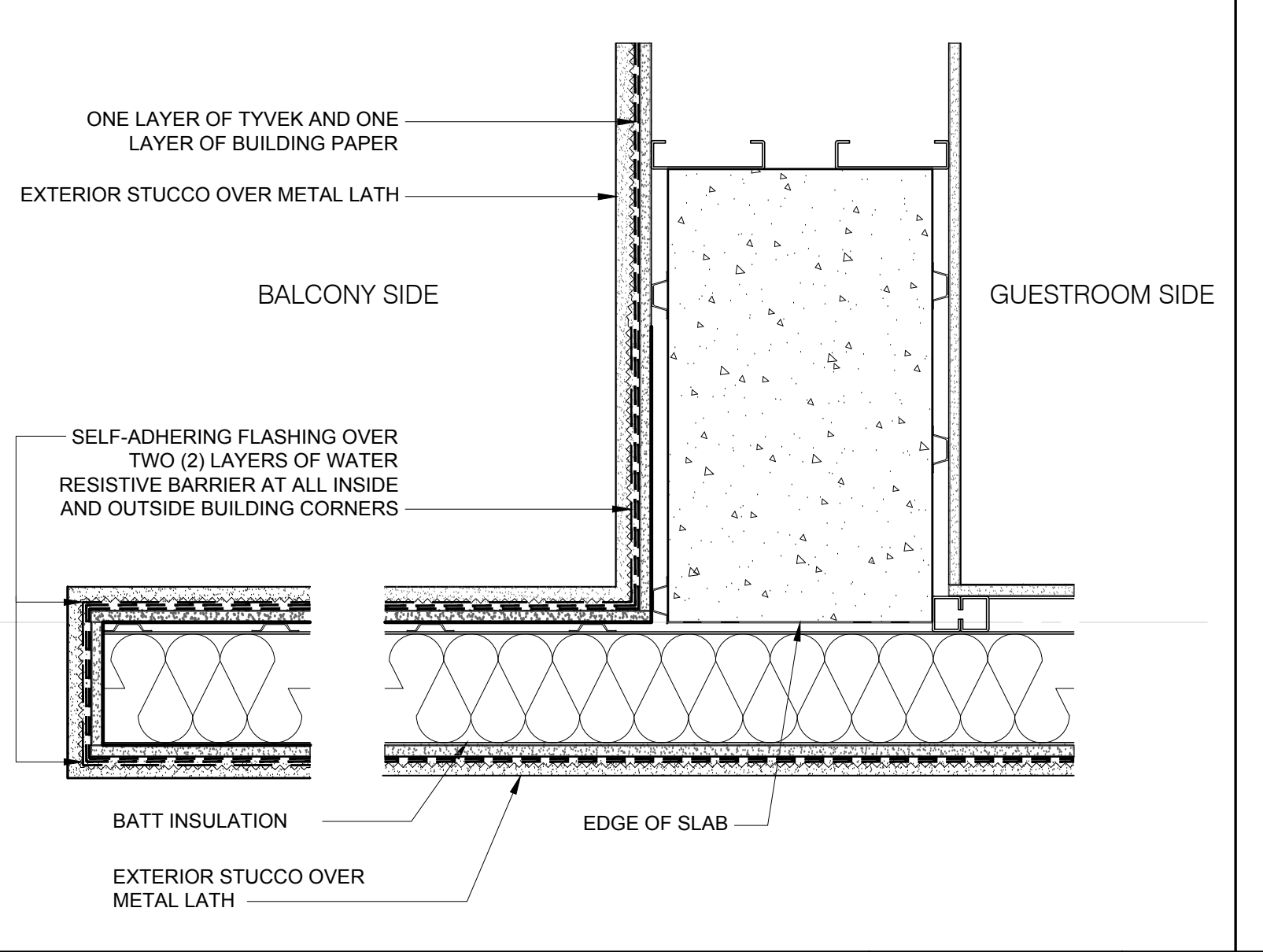
**EXTERIOR STUCCO WALL DETAIL**  
 1 1/2" = 1'-0" 4



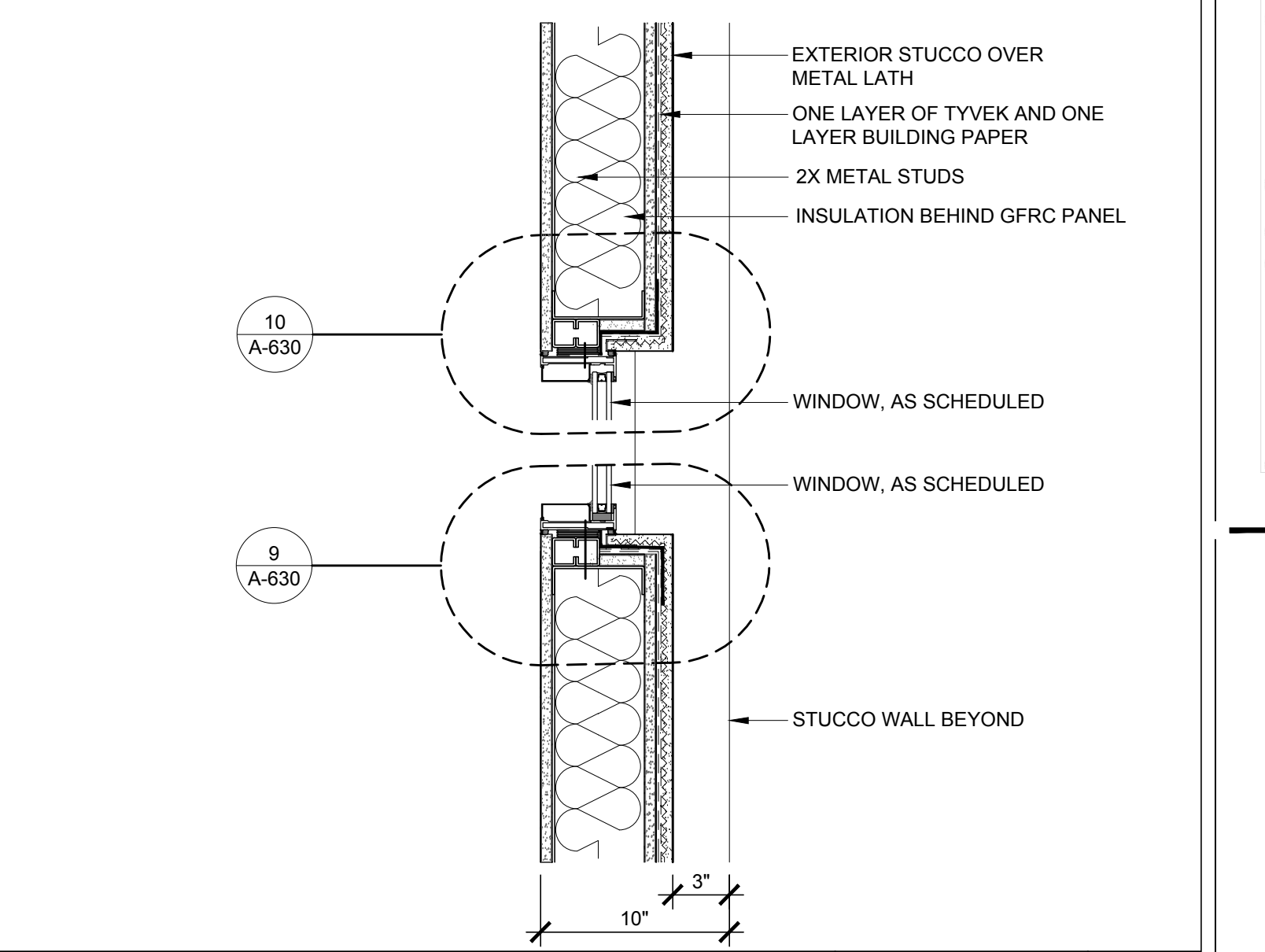
**EXTERIOR STUCCO WALL DETAIL**  
 1 1/2" = 1'-0" 15



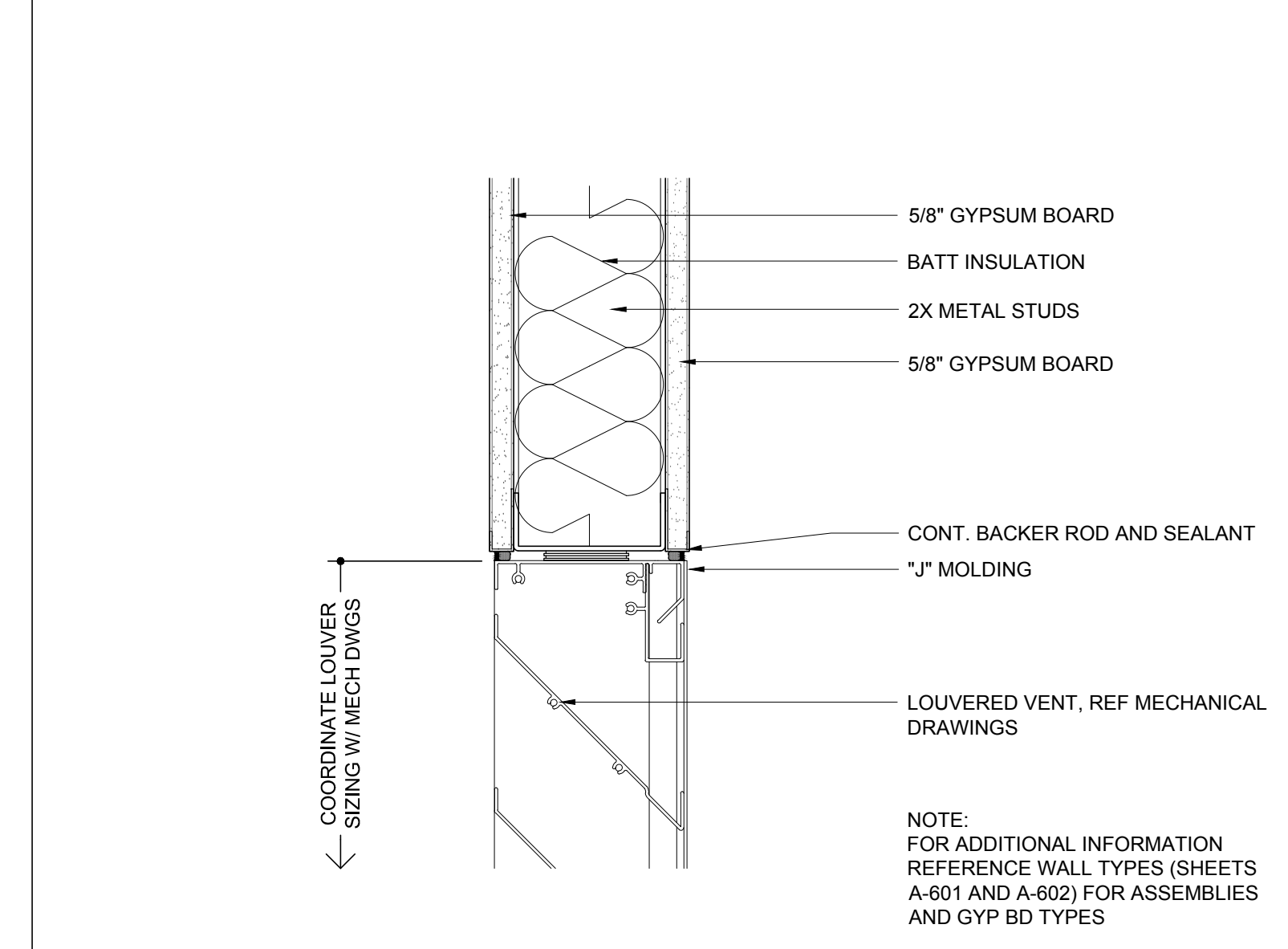
**VERTICAL CONTROL JOINT @ EXTERIOR STUCCO**  
 3" = 1'-0" 11



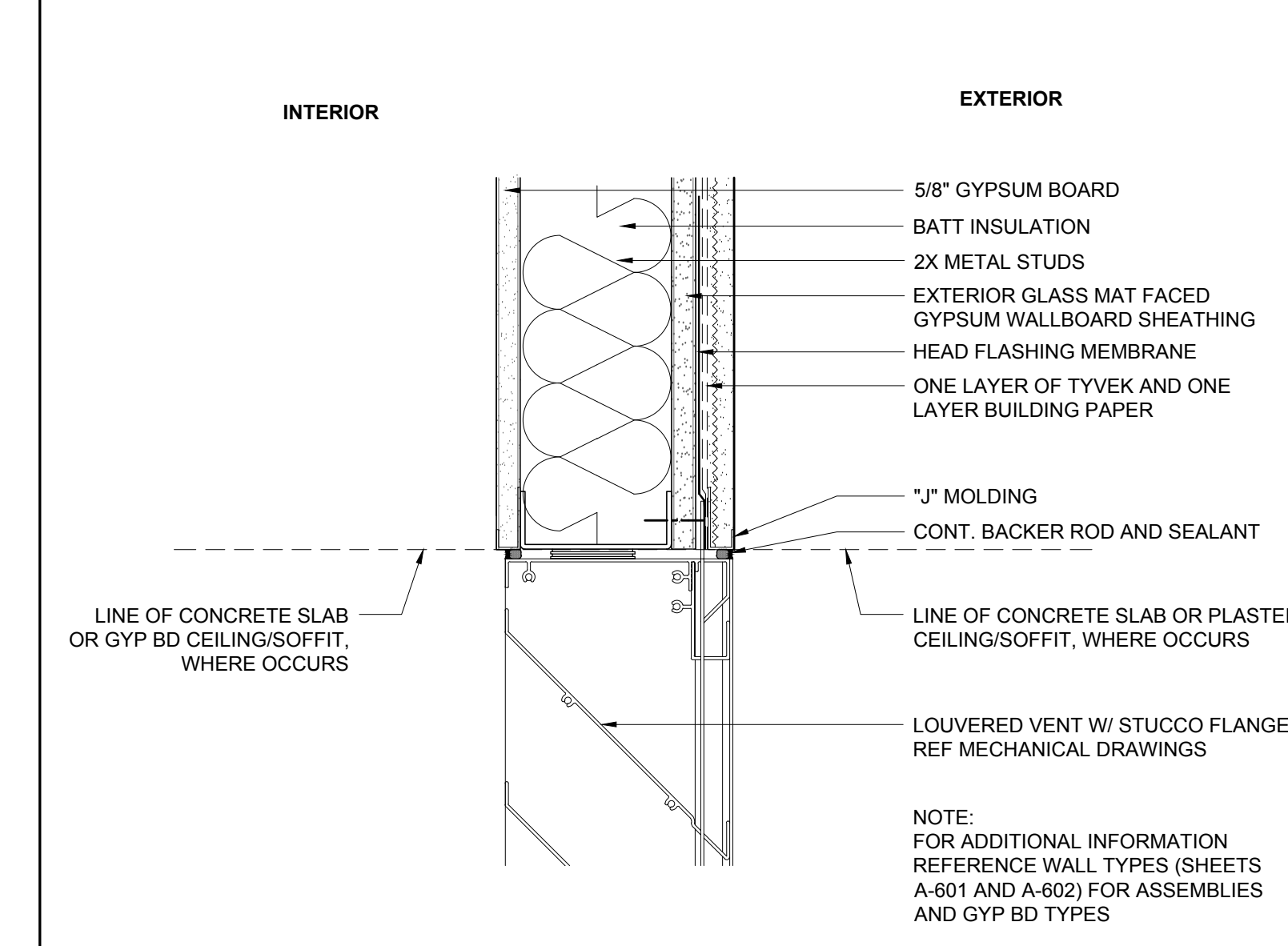
**EXTERIOR STUCCO WALL DETAIL PLAN VIEW**  
 1 1/2" = 1'-0" 7



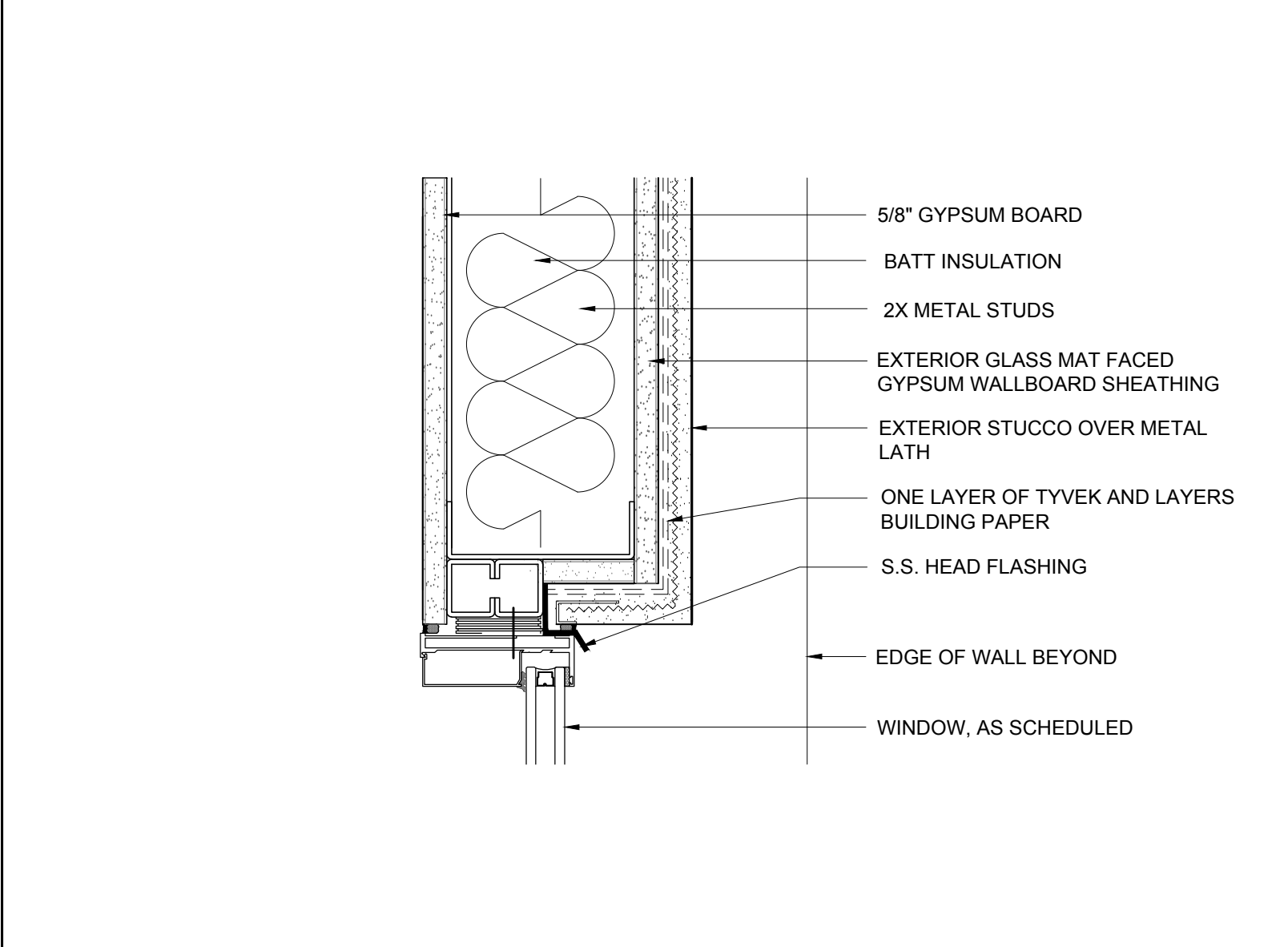
**EXTERIOR STUCCO WALL DETAIL**  
 1 1/2" = 1'-0" 3



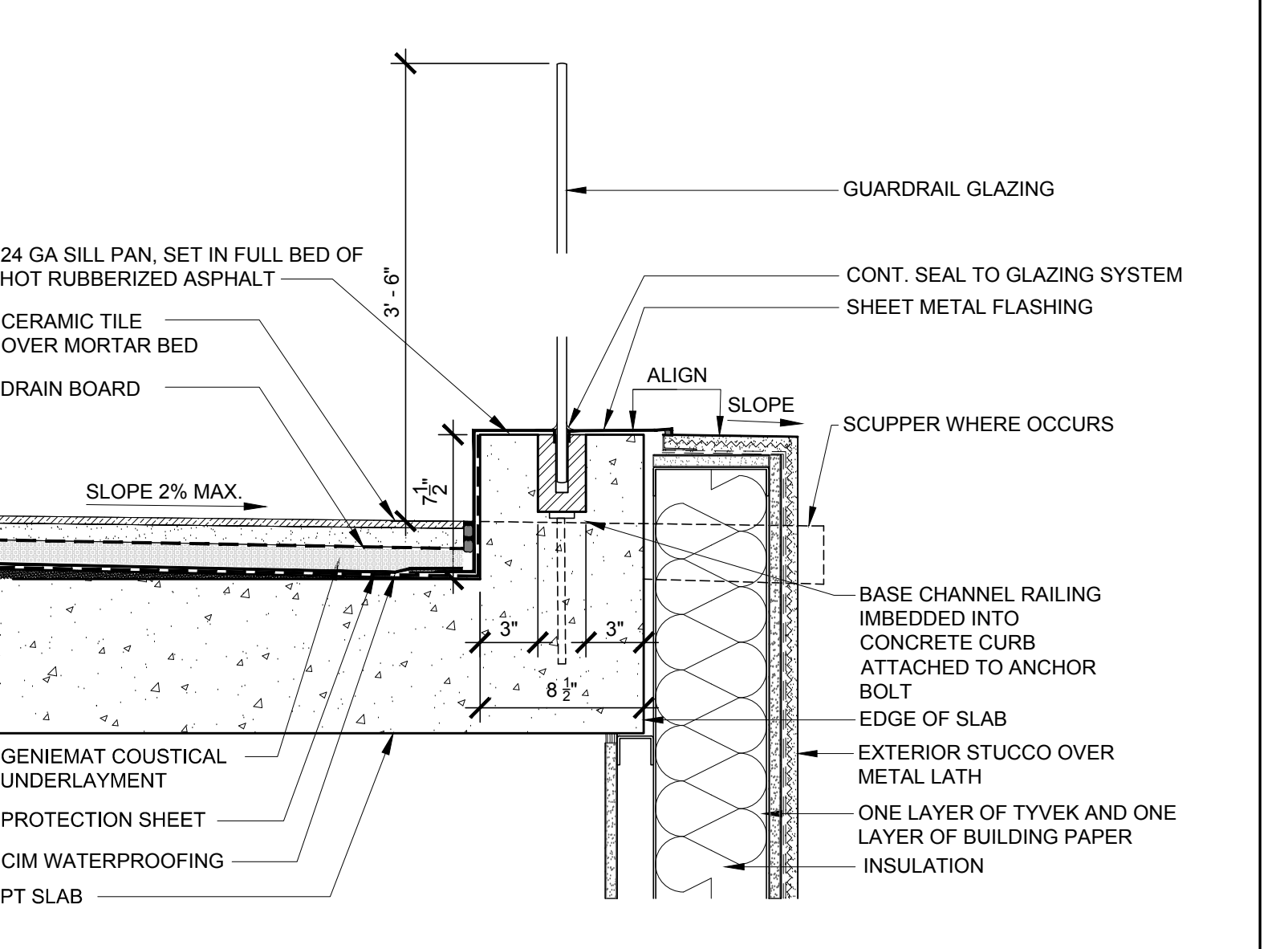
**VENT HEADER DETAIL @ INTERIOR WALL**  
 3" = 1'-0" 18



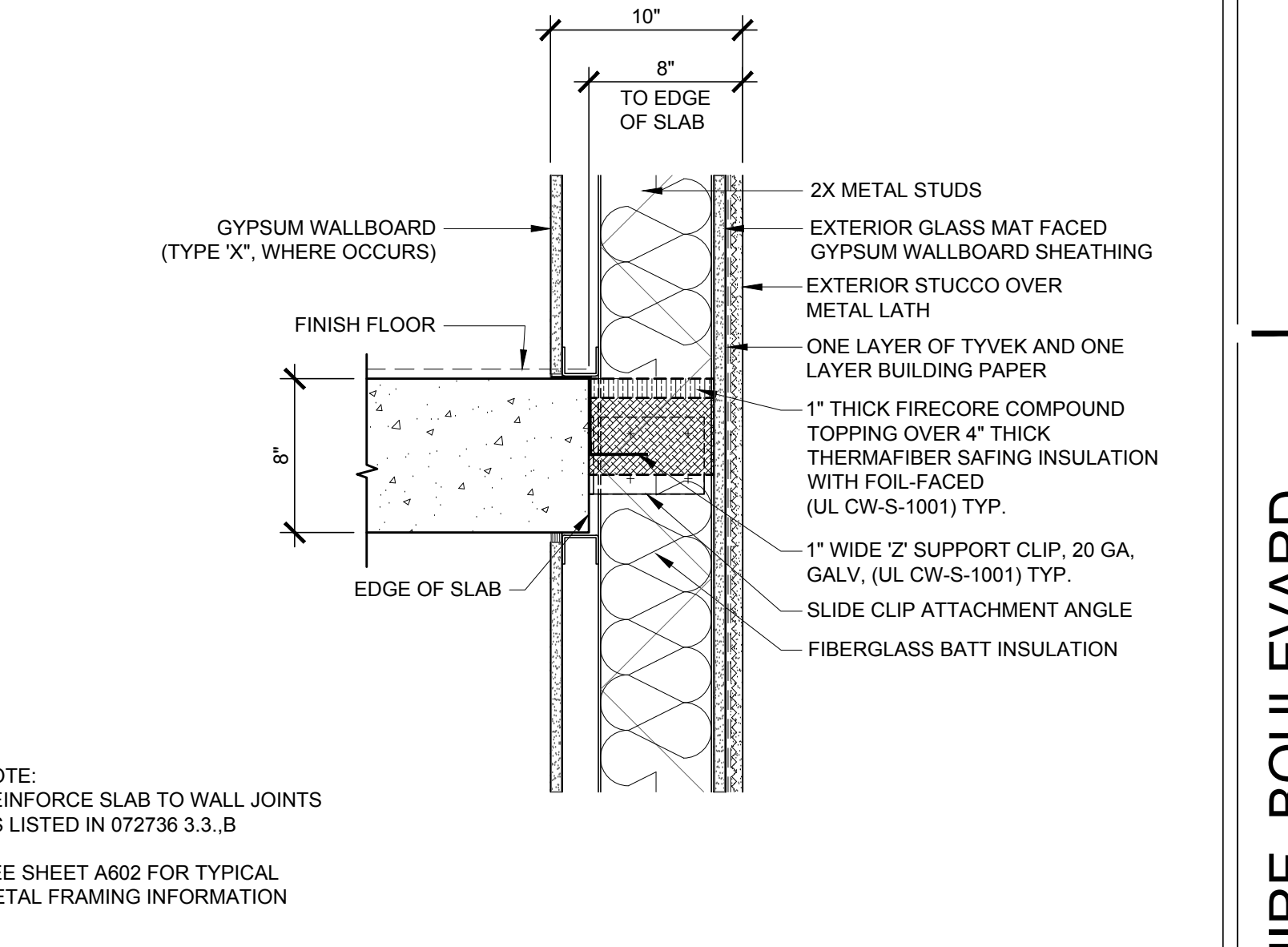
**VENT HEADER DETAIL @ EXTERIOR STUCCO WALL**  
 3" = 1'-0" 14



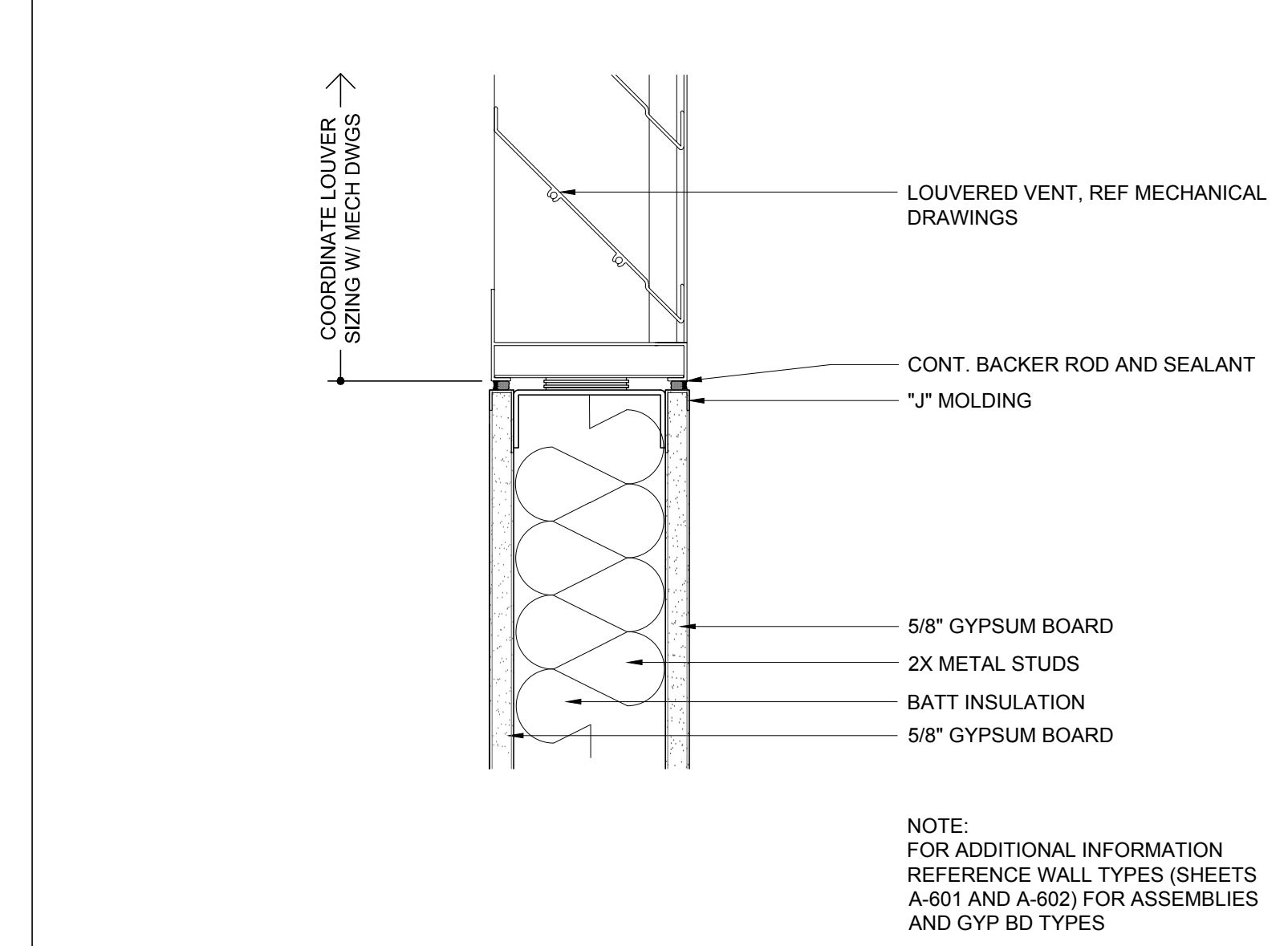
**WINDOW HEADER DETAIL @ EXTERIOR STUCCO WALL**  
 3" = 1'-0" 10



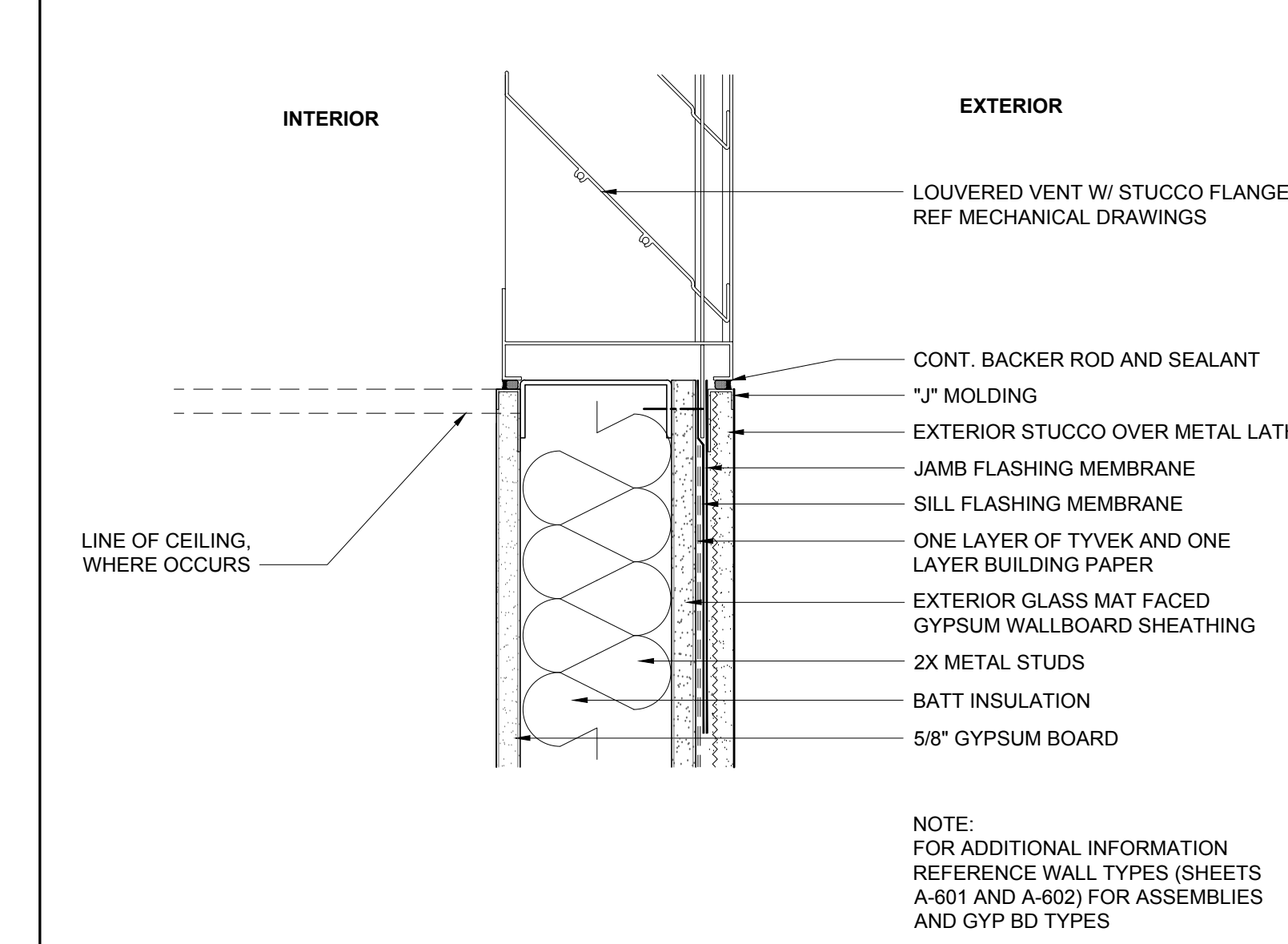
**EXTERIOR STUCCO WALL AT BALCONY**  
 1 1/2" = 1'-0" 6



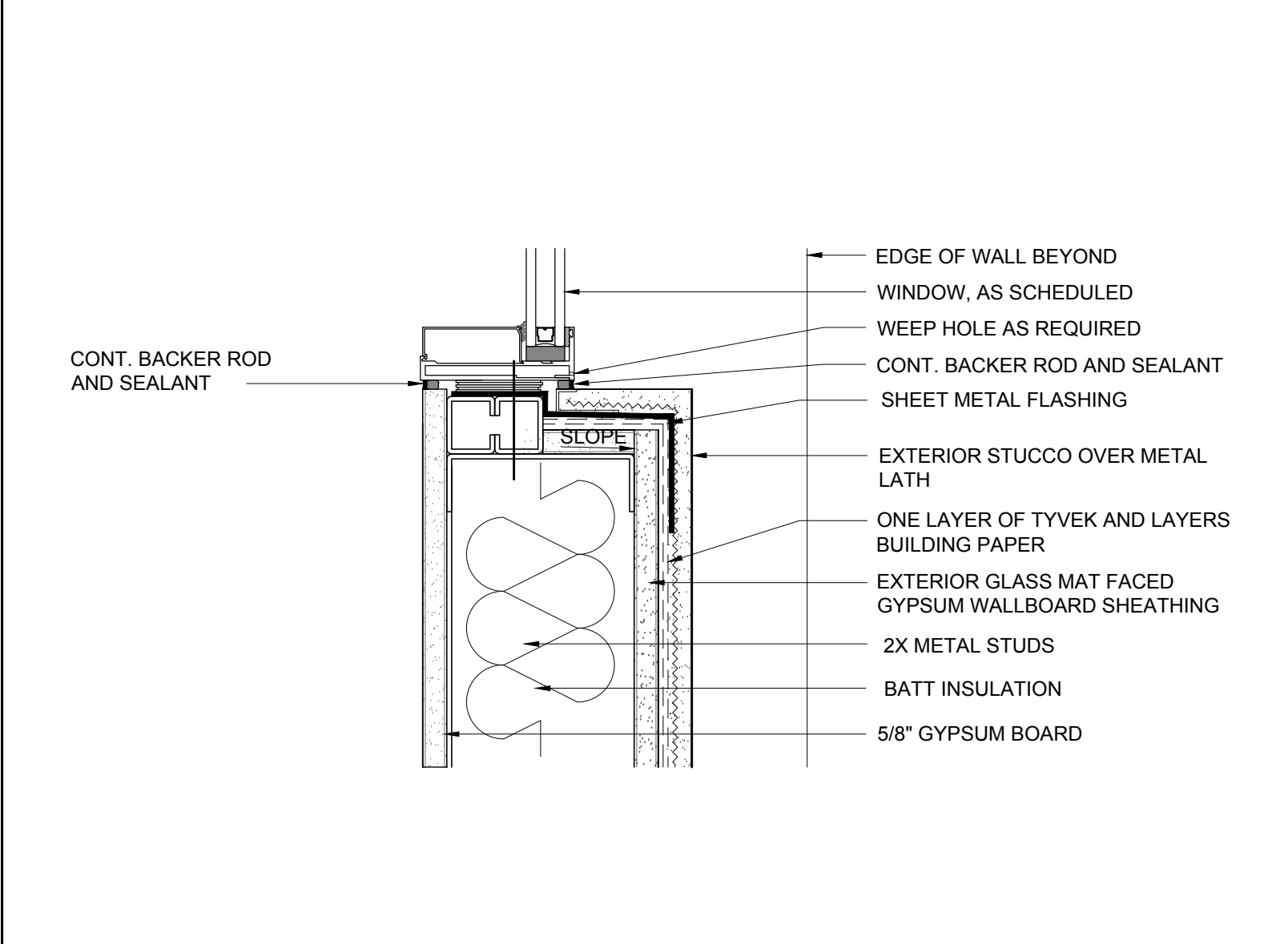
**EXTERIOR STUCCO WALL DETAIL**  
 1 1/2" = 1'-0" 2



**VENT SILL DETAIL @ INTERIOR WALL**  
 3" = 1'-0" 17



**VENT SILL DETAIL @ EXTERIOR STUCCO WALL**  
 3" = 1'-0" 13



**WINDOW SILL DETAIL @ EXTERIOR STUCCO WALL**  
 3" = 1'-0" 9



**EXTERIOR STUCCO WALL DETAIL**  
 1 1/2" = 1'-0" 1