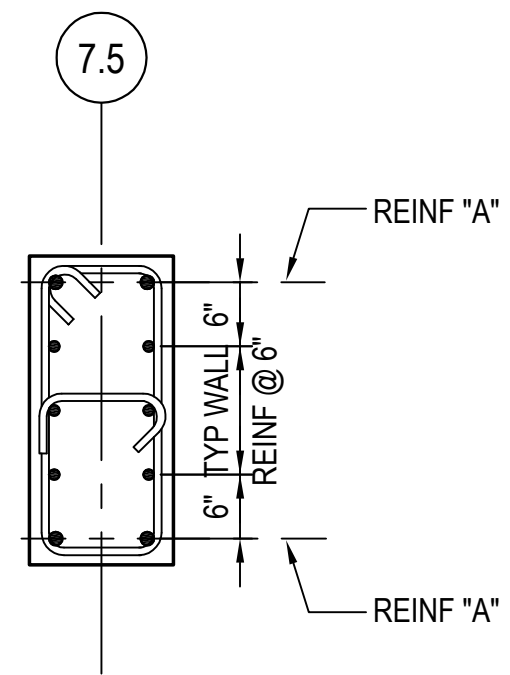
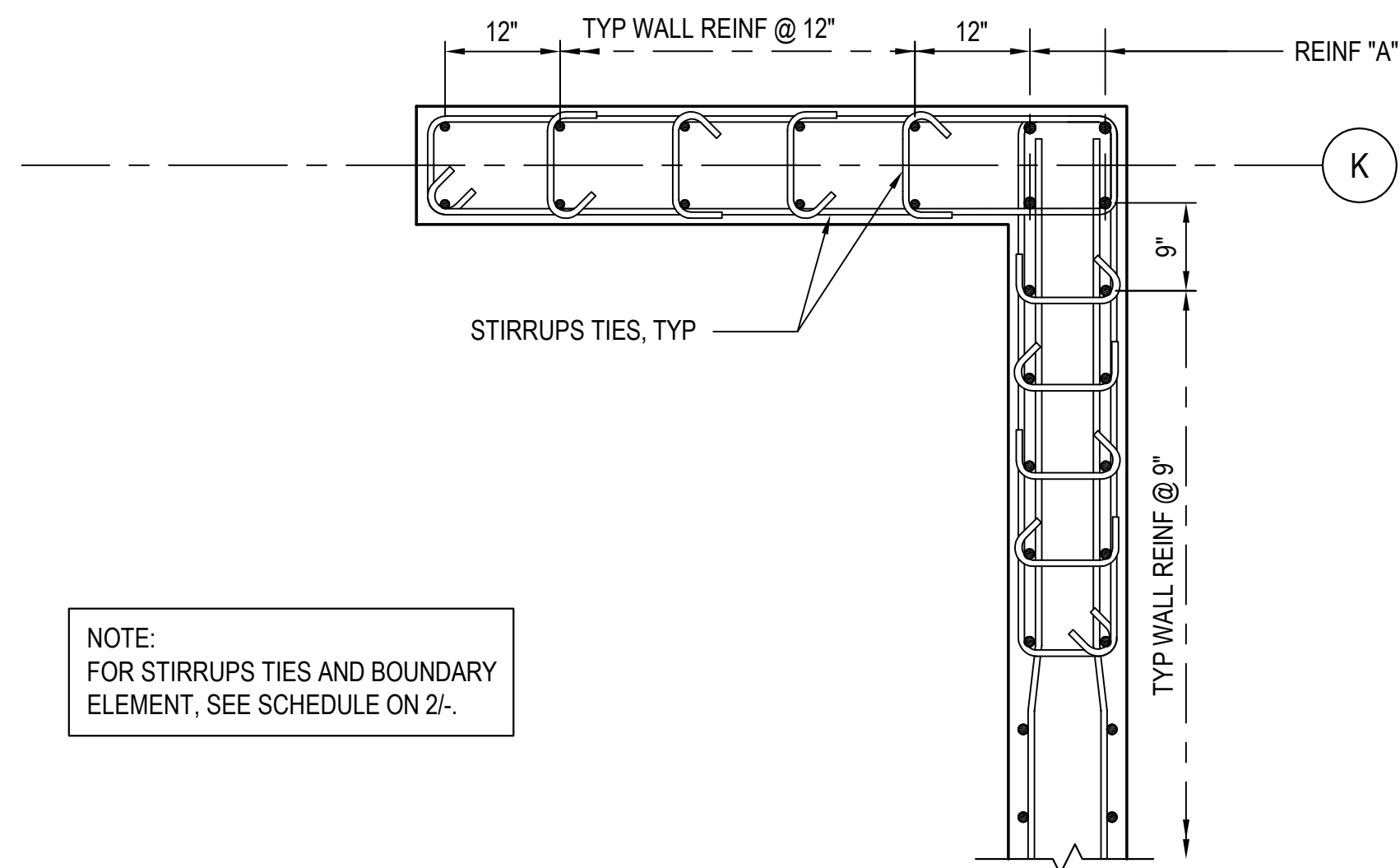


REINFORCING			
LEVEL	*A*	STIRRUPS TIES	
P4 - 2ND	(2) #9	#5@4"	
2ND - 4TH	(2) #9	#5@6"	
4TH - 6TH	(2) #8	#5@8"	
6TH - PENT	(2) #6	#4@12"	


$$\frac{3}{4}'' = 1'-0''$$

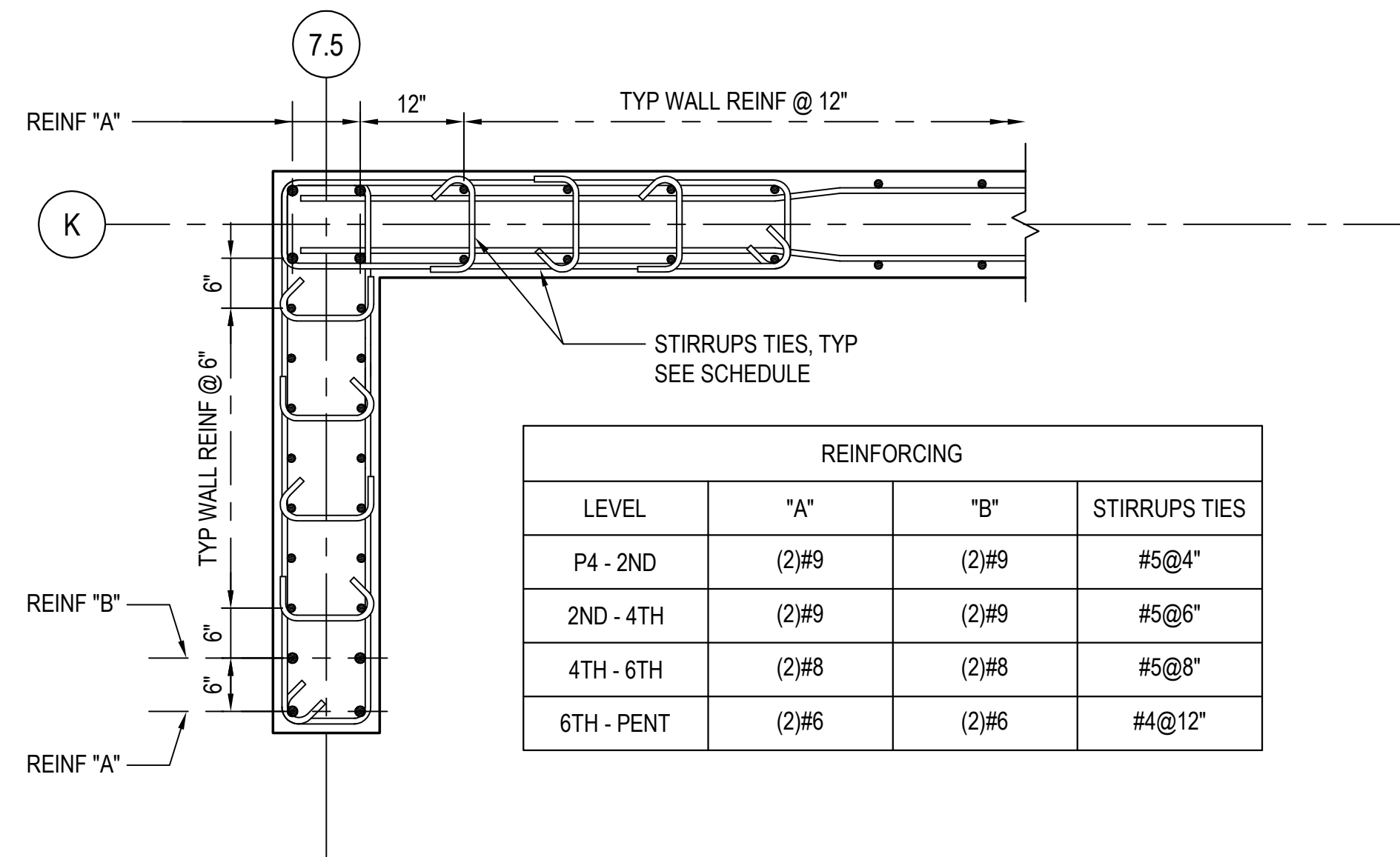
TYPICAL SOUTH CORE WALL REINFORCING PLAN

8


$$3/4" = 1' - 0"$$

SOUTH CORE WALL REINFORCING PLAN LEVEL P4 - LEVEL GROUND

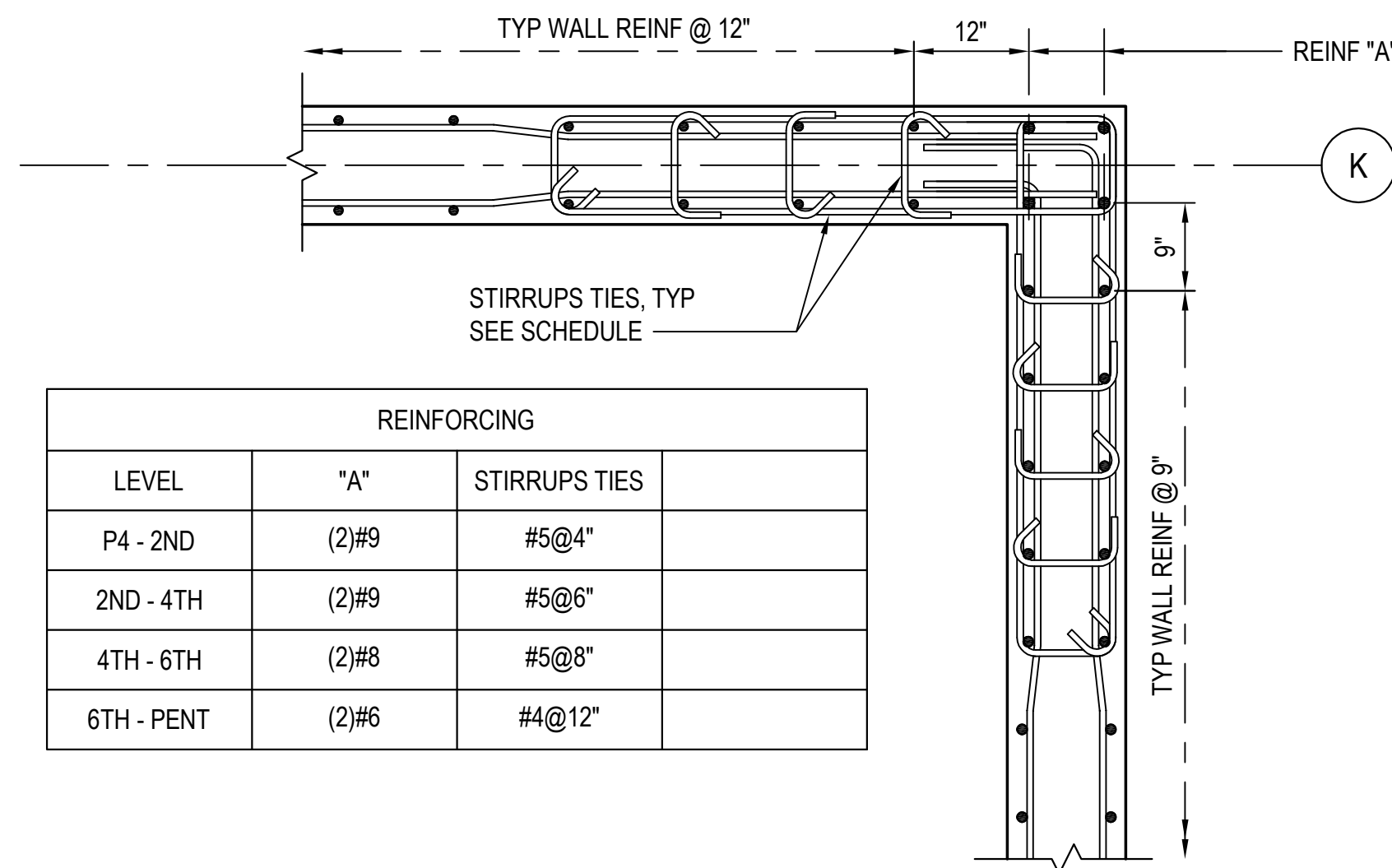
6



3/4"=1'-0"

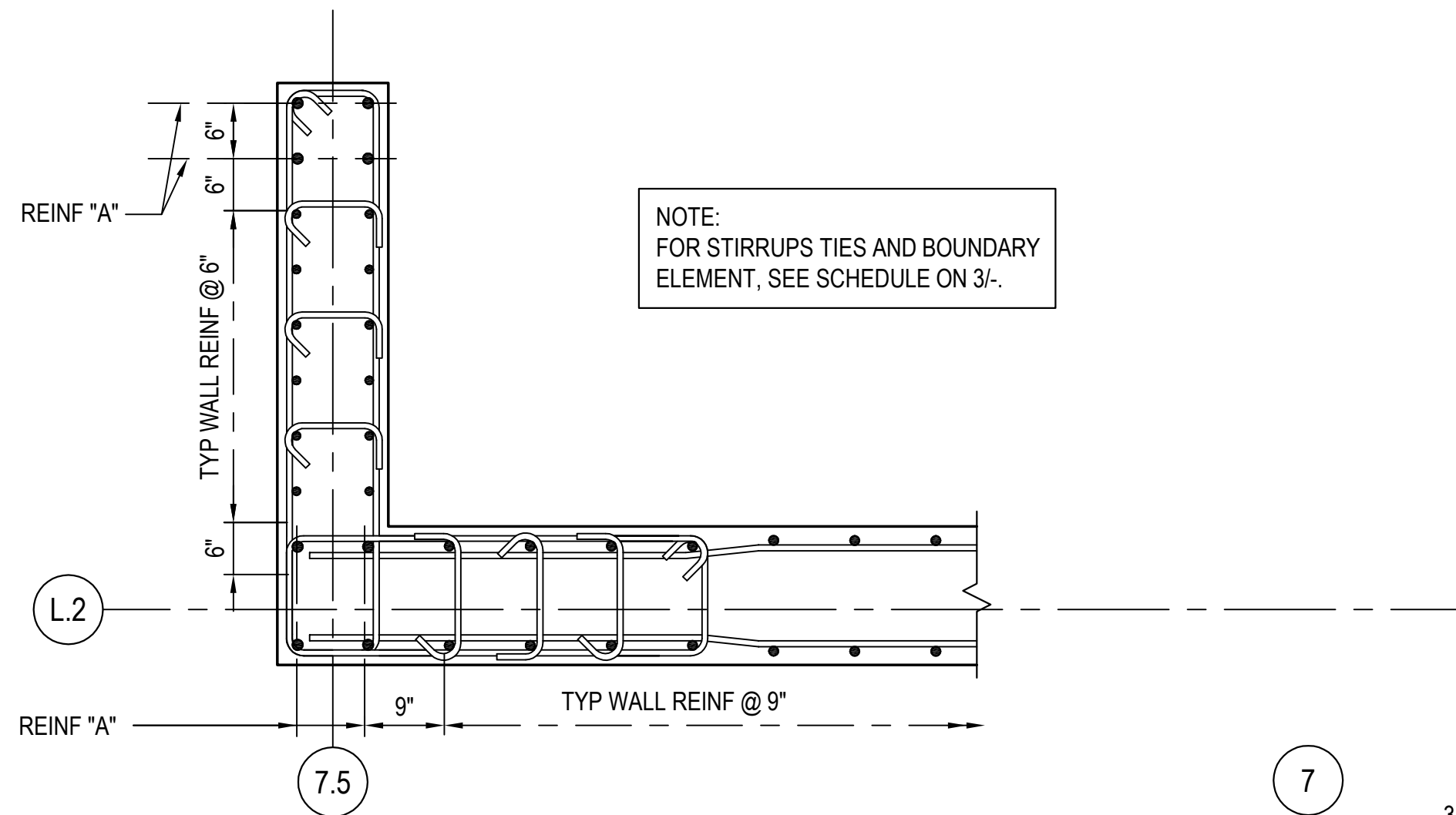
TYPICAL SOUTH CORE WALL REINFORCING PLAN

4


$$\frac{3}{4}'' = 1'-0''$$

TYPICAL SOUTH CORE WALL REINFORCING PLAN

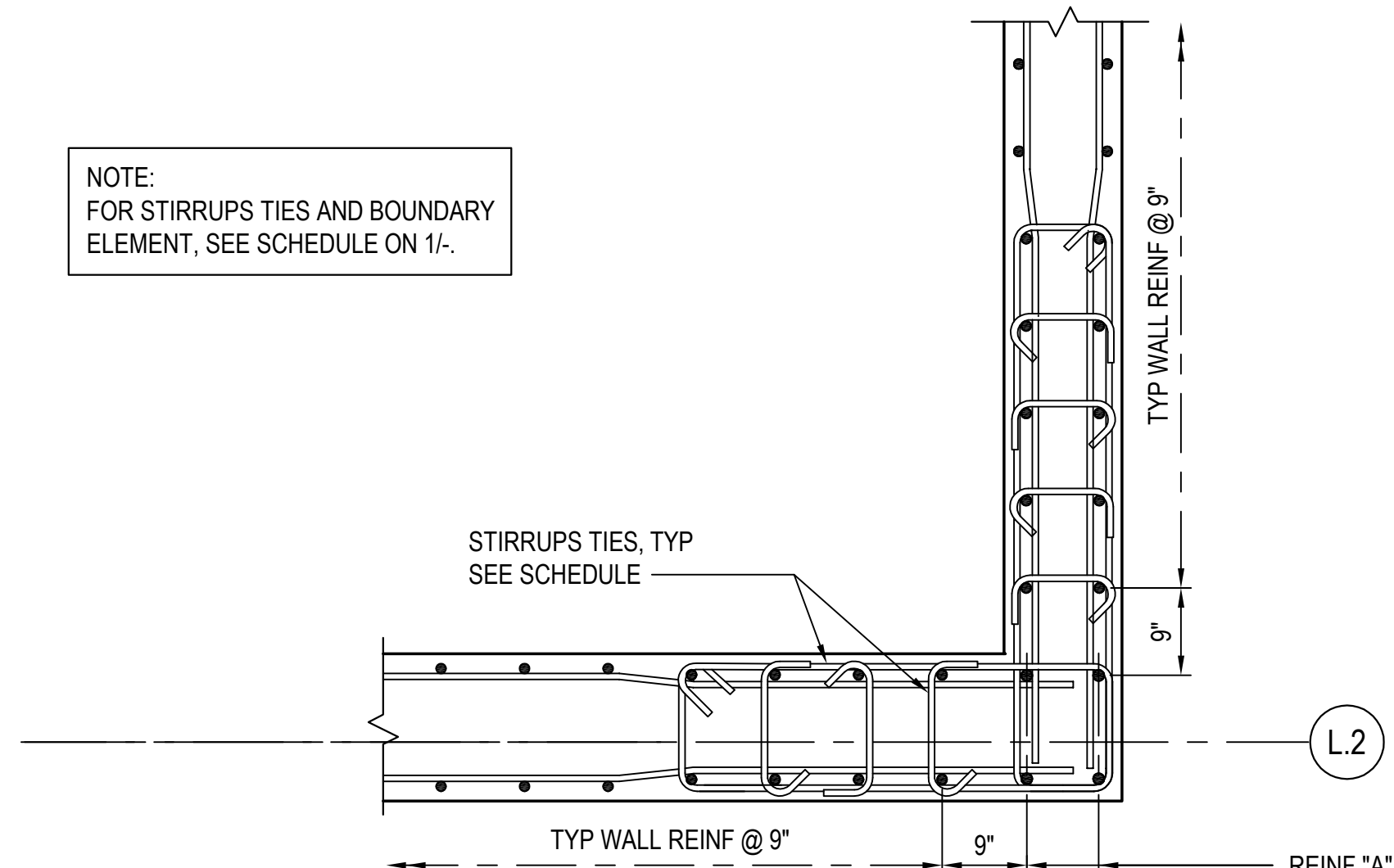
2



3/4"=1'-0"

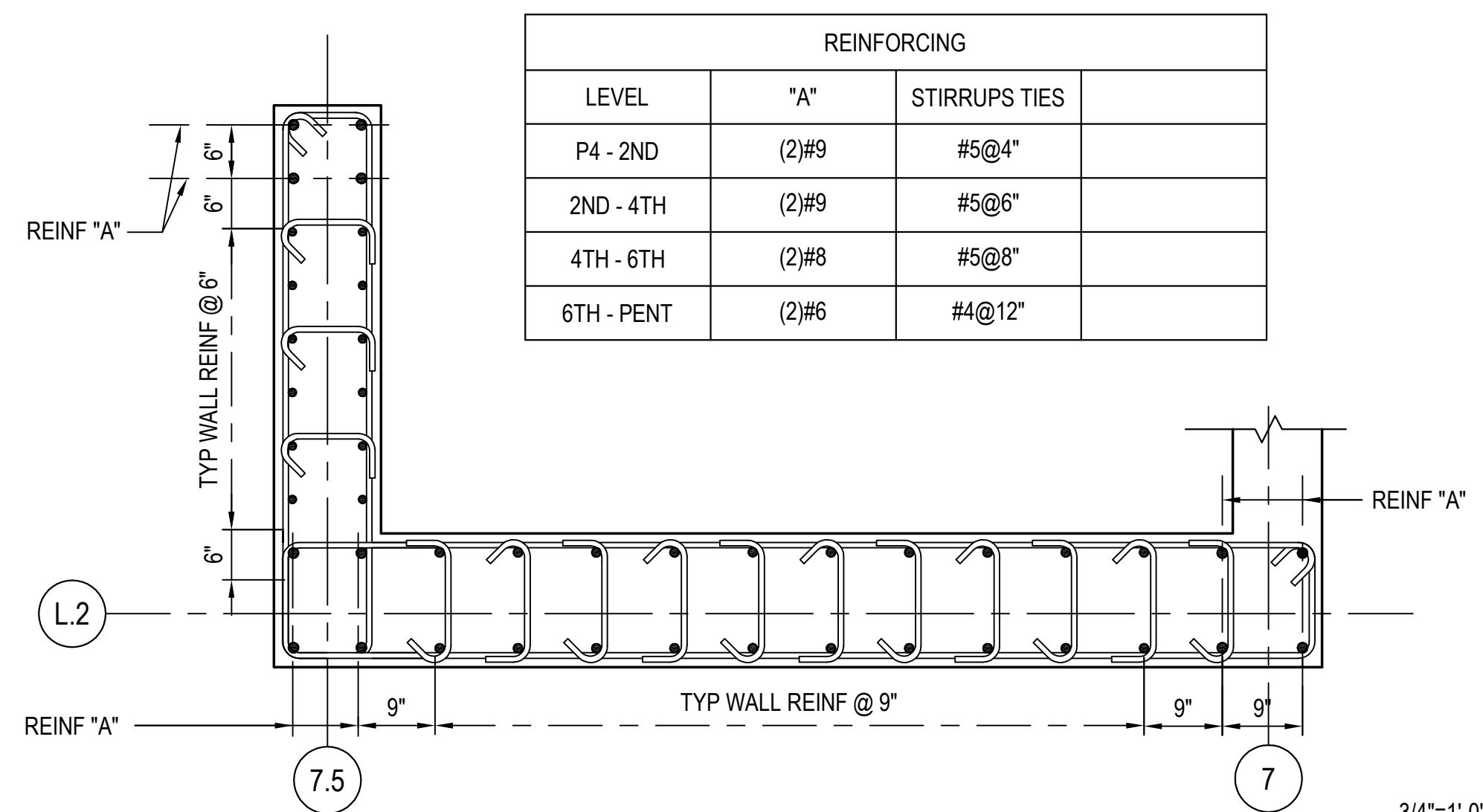
SOUTH CORE WALL REINFORCING PLAN LEVEL P4 - LEVEL GROUND

7


$$3/4'' = 1' - 0''$$

SOUTH CORE WALL REINFORCING PLAN LEVEL P4 - LEVEL GROUND

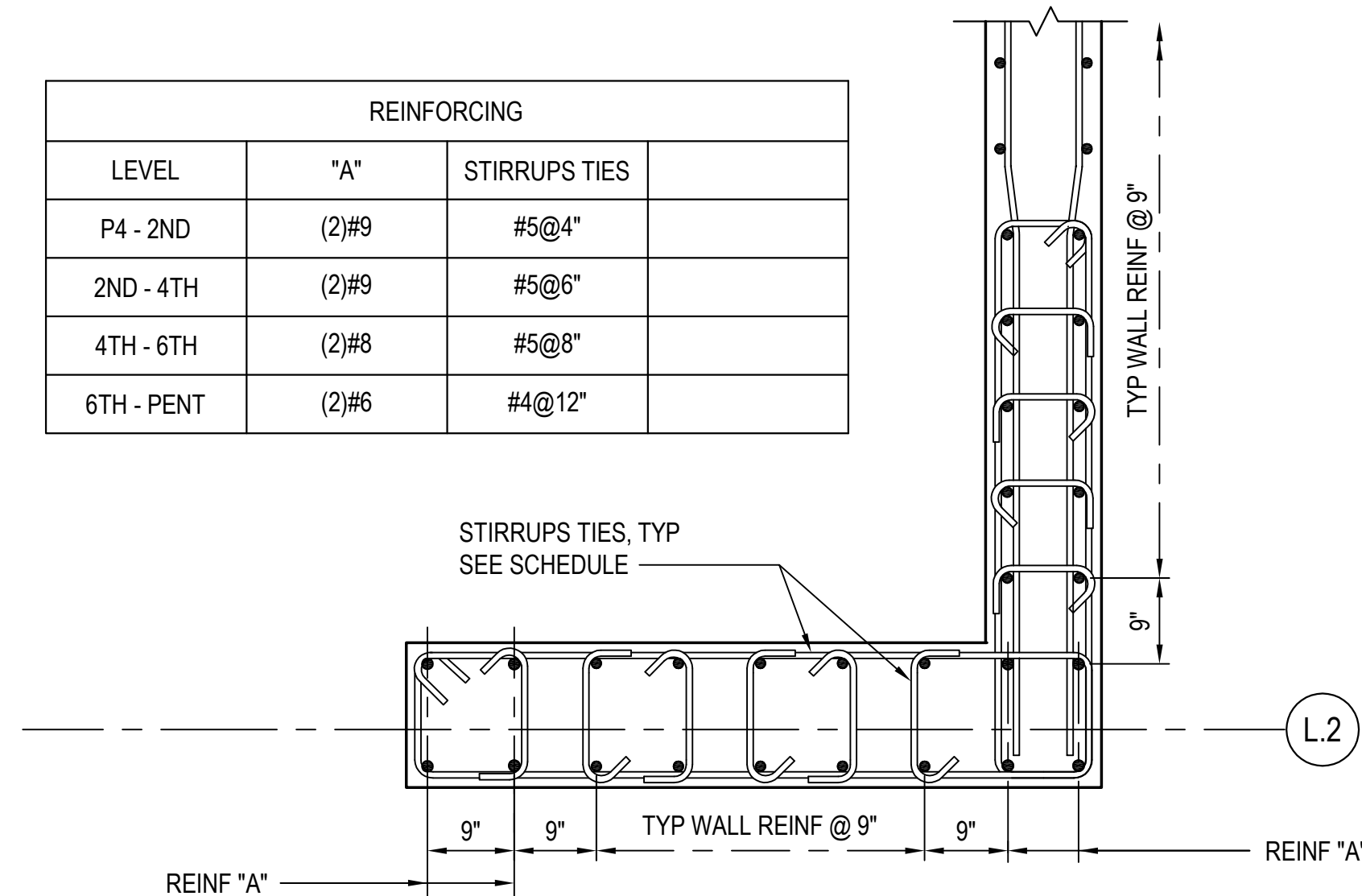
5



3/4"=1'-0"

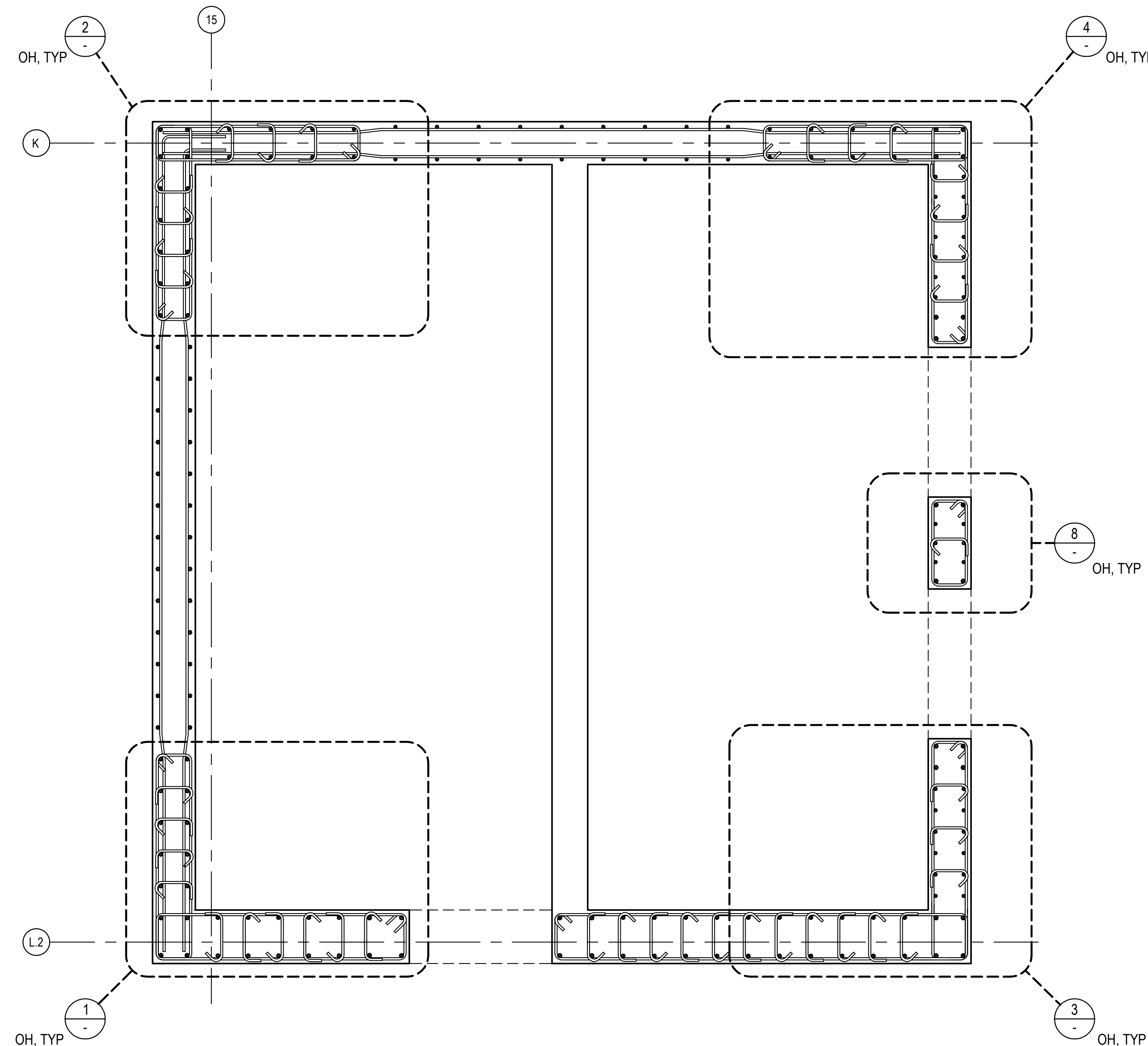
TYPICAL SOUTH CORE WALL REINFORCING PLAN

3


$$\frac{3}{4}'' = 1'-0''$$

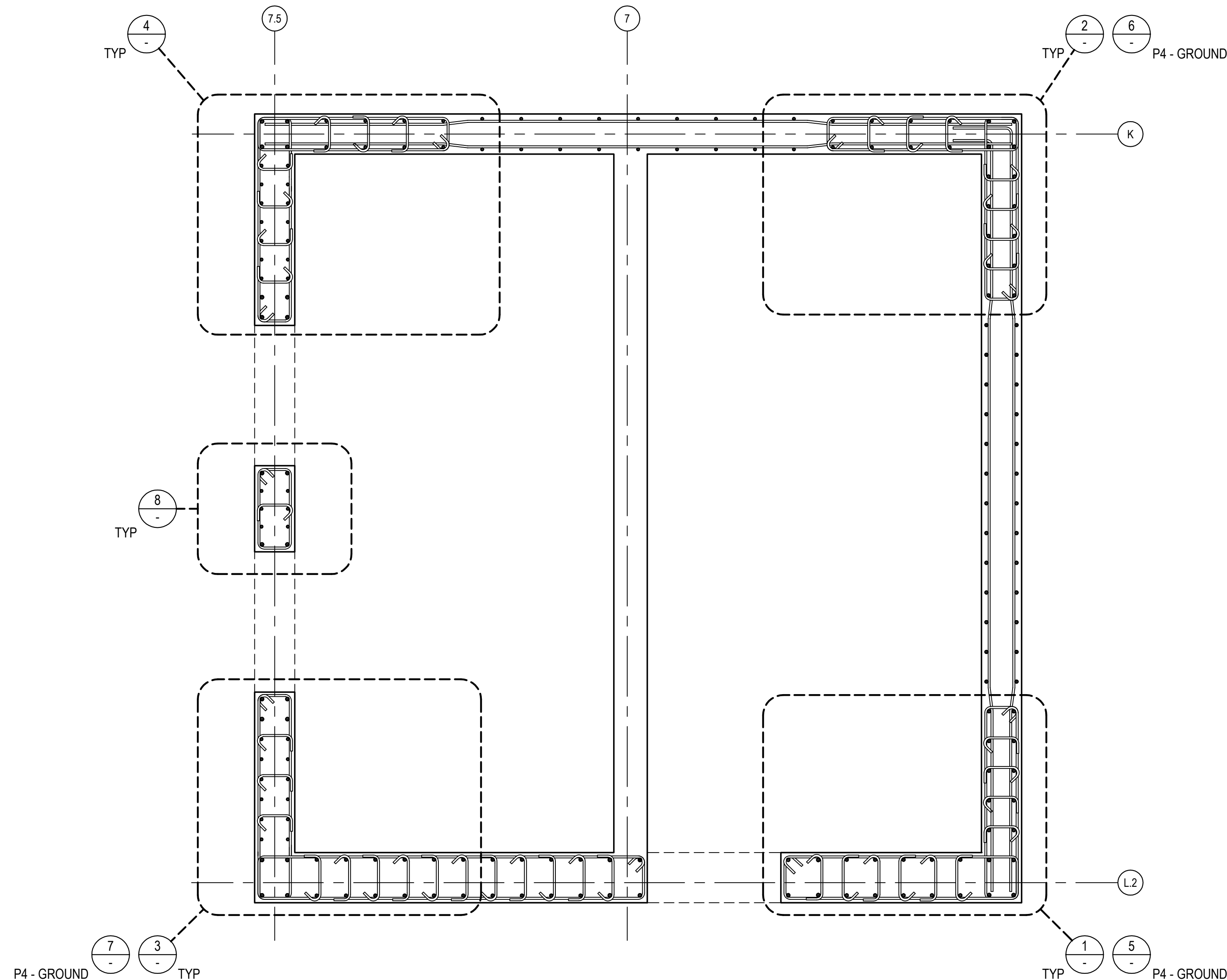
TYPICAL SOUTH CORE WALL REINFORCING PLAN

1

 $1/2"=1'-0"$

NORTH CORE WALL REINFORCING PLAN

B


$$1/2'' = 1'-0''$$

SOUTH CORE WALL REINFORCING PLAN

A