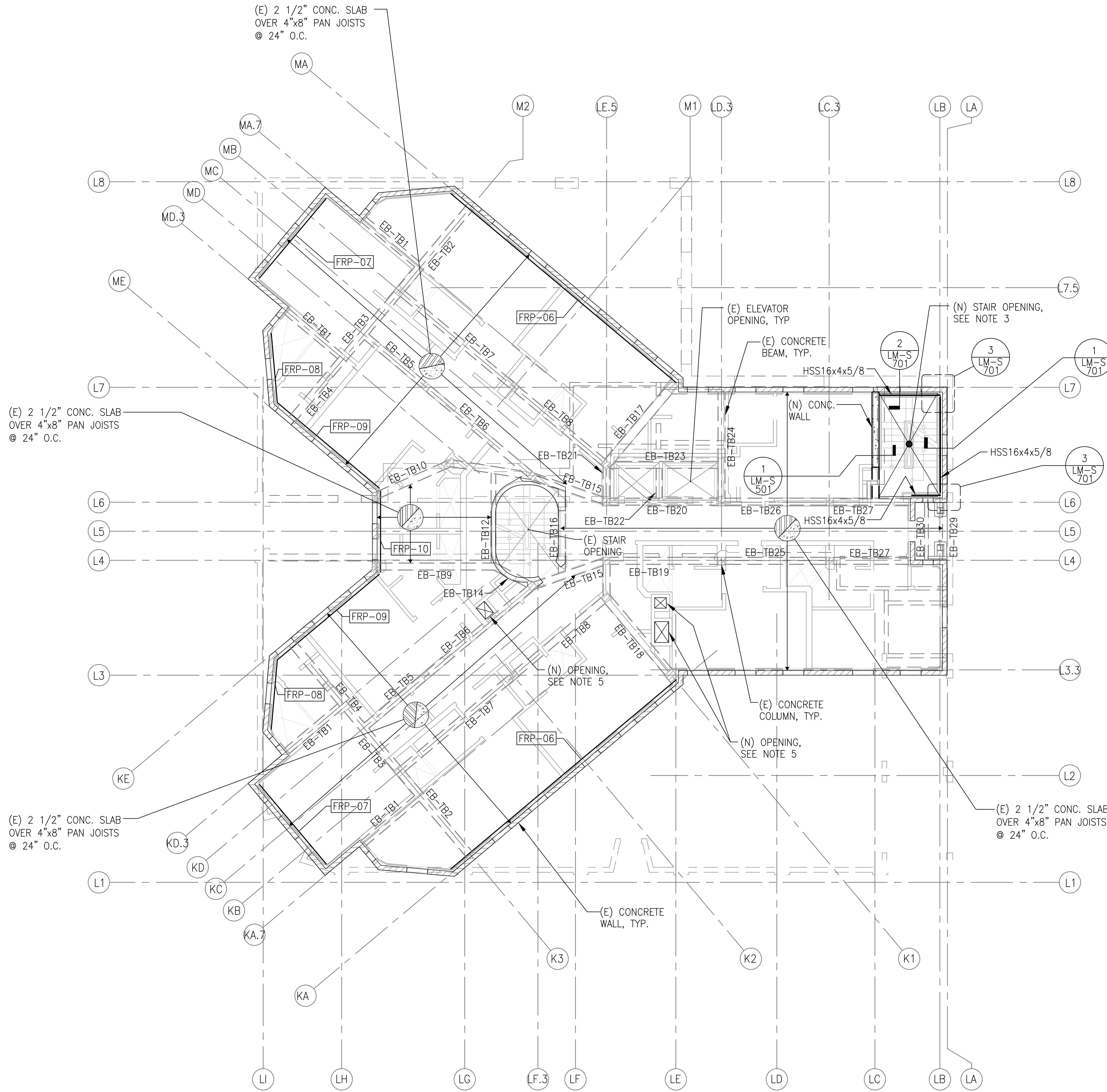


# 2 THIRD FLOOR PLAN

1/8"=1'-0"

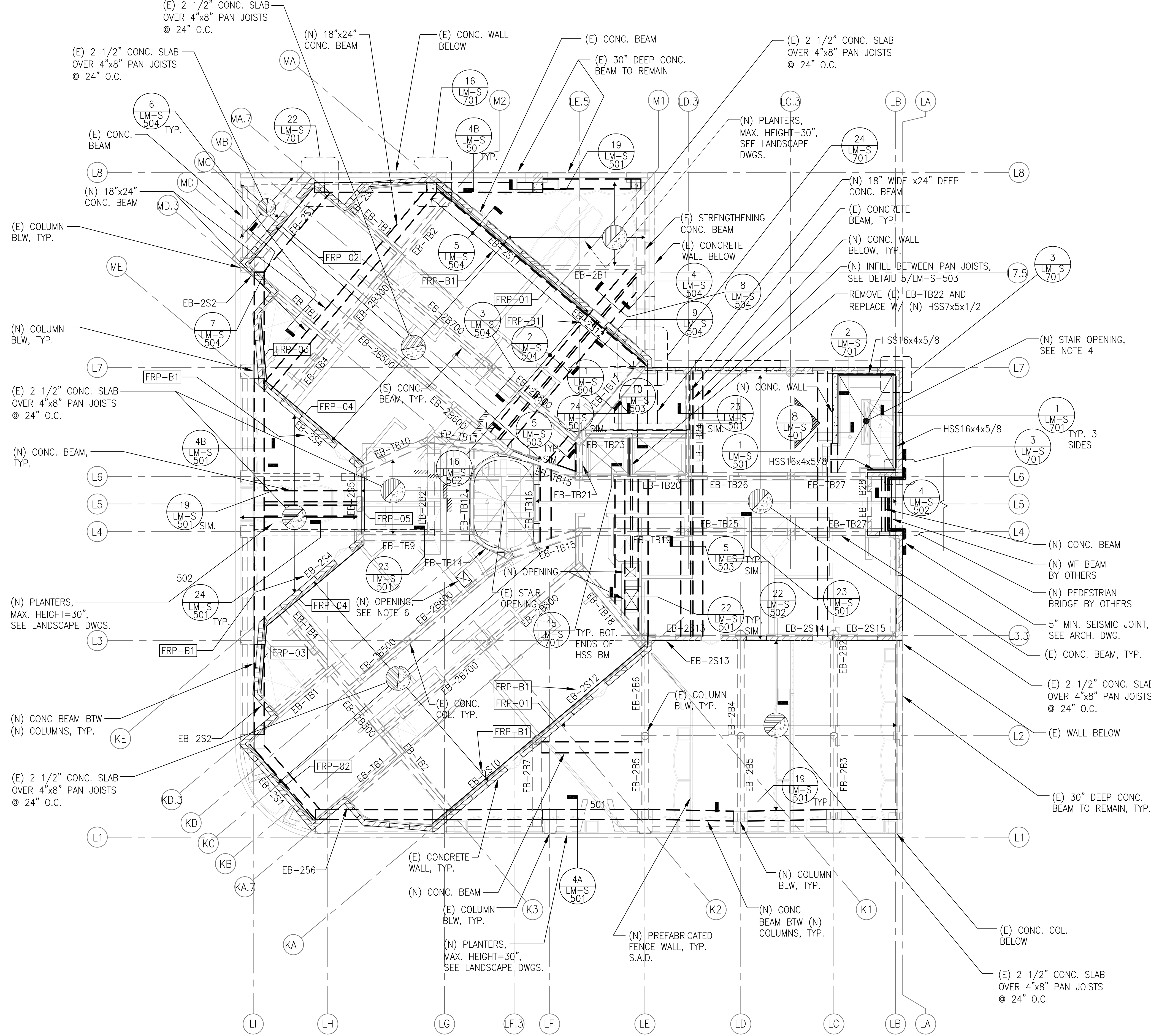


## NOTES:

1. INDICATES EXTEND OF FRP.
2. FRP-XX INDICATES TYPE OF FRP. SEE DETAIL 6/LM-S-801.
3. CONTRACTOR IS SOLELY RESPONSIBLE FOR EXCAVATION AND SHORING PROCEDURES INCLUDING LAGGING, UNDERPINNING AND PROTECTION OF EXISTING STRUCTURE.
4. EB-XX INDICATES EXISTING CONCRETE BEAM, SEE EXISTING BEAM SCHEDULE 16/LM-S-501.
5. SEE DETAILS 22/LM-S-501 AND 8/LM-S-501 FOR STRENGTHENING REQUIRED AROUND NEW OPENINGS PENETRATING THRU (E) CONCRETE PAN JOISTS.
6. LOCATE SMALLER PENETRATIONS BETWEEN (E) CONCRETE PAN JOISTS & REFER TO DETAIL 7/LM-S-004 FOR STRENGTHENING REQUIREMENTS. REFER TO DETAILS 22/LM-S-501 AND 8/LM-S-501 AT LOCATIONS WHERE (E) CONCRETE PAN JOISTS ARE TO BE CUT.
7. REFER TO ARCHITECTURAL & MECHANICAL DRAWINGS FOR LOCATION OF (N) PENETRATIONS IN (E) CONCRETE SLAB.
8. CARE SHALL BE TAKEN DURING CONSTRUCTION TO AVOID DAMAGING (E) STRUCTURE. CONTRACTOR TO NOTIFY STRUCTURAL FOCUS & OWNER'S REPRESENTATIVE IF (E) STRUCTURE IS DAMAGED DURING CONSTRUCTION. CONTRACTOR IS RESPONSIBLE FOR REPAIRING SUCH DAMAGES. STRUCTURAL FOCUS NEEDS TO REVIEW REPAIR DETAILS PRIOR TO START OF THE REPAIR WORK.
9. REFER TO NOTE 3 ON BASEMENT/FOUNDATION PLAN, 1/LM-S-201.

# 1 SECOND FLOOR PLAN

1/8"=1'-0"



## NOTES:

1. INDICATES EXTEND OF FRP.
2. FRP-XX INDICATES TYPE OF FRP. SEE DETAIL 6/LM-S-801.
3. REFER TO TO LM-S-802 FOR DIAPHRAGM FRP STRENGTHENING.
4. CONTRACTOR IS SOLELY RESPONSIBLE FOR EXCAVATION AND SHORING PROCEDURES INCLUDING LAGGING, UNDERPINNING AND PROTECTION OF EXISTING STRUCTURE.
5. EB-XX INDICATES EXISTING CONCRETE BEAM. SEE EXISTING BEAM SCHEDULE 16/LM-S-501.
6. SEE DETAILS 22/LM-S-501 AND 8/LM-S-501 FOR STRENGTHENING REQUIRED AROUND NEW OPENINGS PENETRATING THRU (E) CONCRETE PAN JOISTS.
7. LOCATE SMALLER PENETRATIONS BETWEEN (E) CONCRETE PAN JOISTS & REFER TO DETAIL 7/LM-S-004 FOR STRENGTHENING REQUIREMENTS. REFER TO DETAILS 8/LM-S-501 AND 22/LM-S-501 AT LOCATIONS WHERE (E) CONCRETE PAN JOISTS ARE TO BE CUT.
8. REFER TO ARCHITECTURAL & MECHANICAL DRAWINGS FOR LOCATION OF (N) PENETRATIONS IN (E) CONCRETE SLAB.
9. CARE SHALL BE TAKEN DURING CONSTRUCTION TO AVOID DAMAGING (E) STRUCTURE. CONTRACTOR TO NOTIFY STRUCTURAL FOCUS & OWNER'S REPRESENTATIVE IF (E) STRUCTURE IS DAMAGED DURING CONSTRUCTION. CONTRACTOR IS RESPONSIBLE FOR REPAIRING SUCH DAMAGES. STRUCTURAL FOCUS NEEDS TO REVIEW REPAIR DETAILS PRIOR TO START OF THE REPAIR WORK.
10. REFER TO NOTE 3 ON BASEMENT/FOUNDATION PLAN, 1/LM-S-201.
11. INDICATES TYPE OF BEAM FRP STRENGTHENING, SEE DETAIL FRP-BX 8/LM-S-801.
12. CONTRACTOR SHALL TAKE MEASURES NECESSARY TO PREVENT DISTRESS OR DAMAGE TO EXISTING CONCRETE CAUSED BY TEMPERATURE FLUCTUATION DUE TO DIRECT SUNLIGHT, ETC., DURING FRP INSTALLATION.

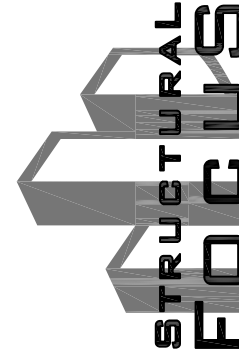
REVISION	DATE	DESCRIPTION
01	06/07/2015	Revised 02
02	06/04/2015	Revised 03
03	10/02/2015	Revised 04
04	02/27/2016	Revised 05



howard laks architects  
1945 hillside street  
santa monica, ca 90401  
voice : 310-393-4465  
fax : 310-393-2230

## CONSULTANTS

CELA & BERNARDI ASSOCIATES  
BUILDING & STRUCTURAL ENGINEERS  
GARDEN, CALIFORNIA 90248  
TEL: 310.323.9955  
FAX: 310.323.9955



710 WILSHIRE BOULEVARD  
MIXED-USE HOTEL PROJECT  
SANTA MONICA - CALIFORNIA, 90401  
SECOND AND THIRD FLOOR PLANS

PREPARED BY: E. J. B.  
FOR CONSULTATION

DRAWN	
CHECKED	
APPROVED	
SCALE	AS NOTED
SHEET	LM-S-202
DATE	JUNE 25, 2013
PROJECT NUMBER	10129