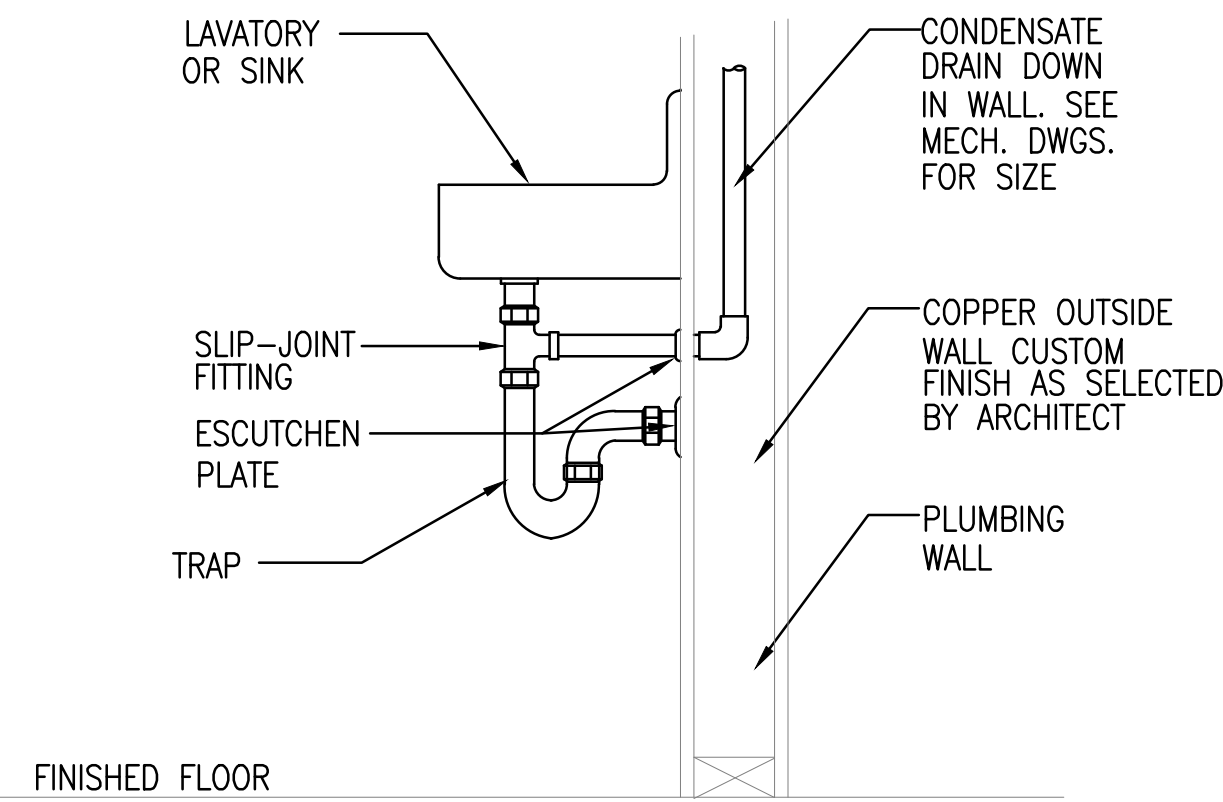


TRAPEZE PIPE MOUNT

SCALE
NONE

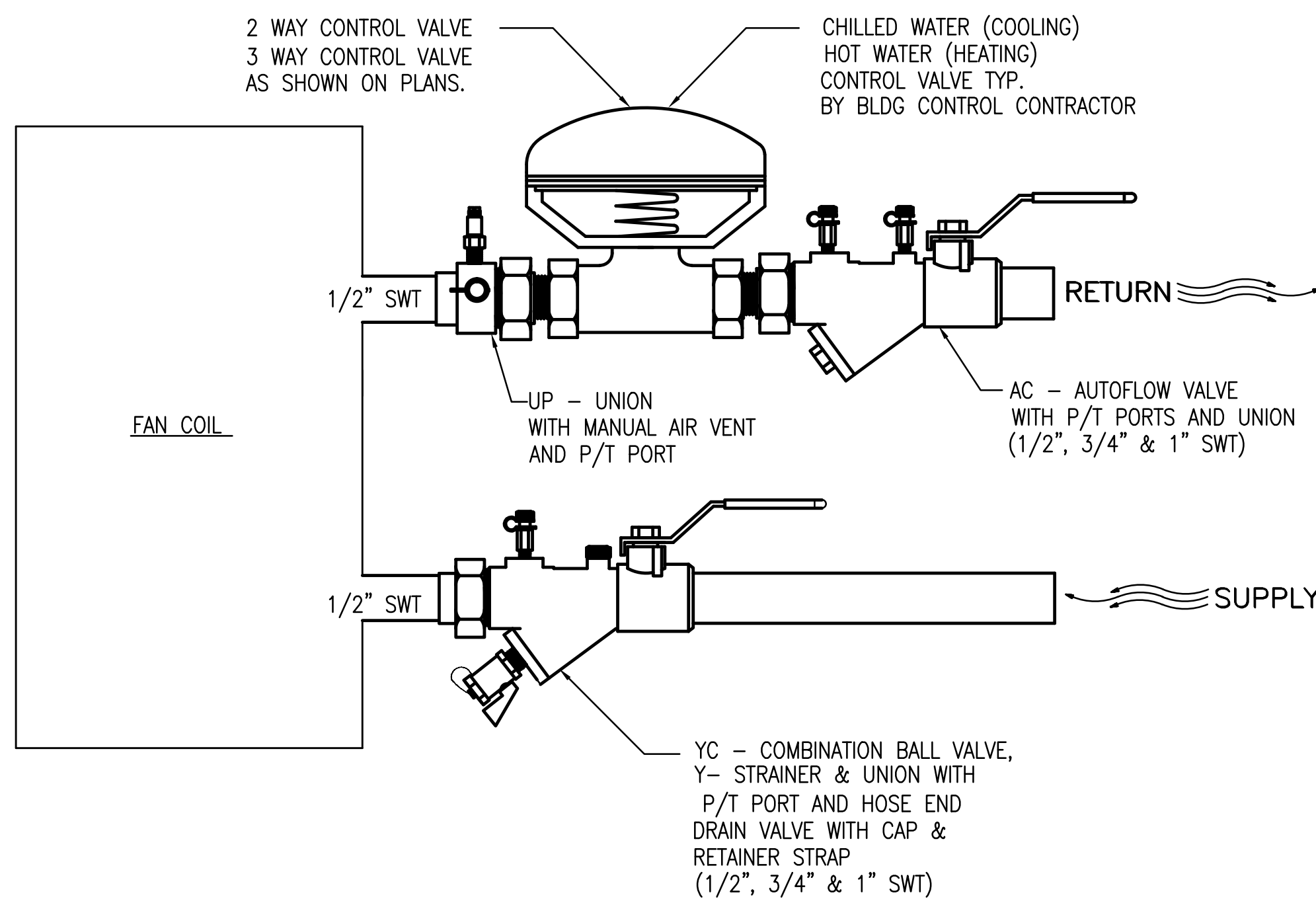
7



CONDENSATE DRAIN TO SINK TAILPIECE DETAIL

SCALE
NONE

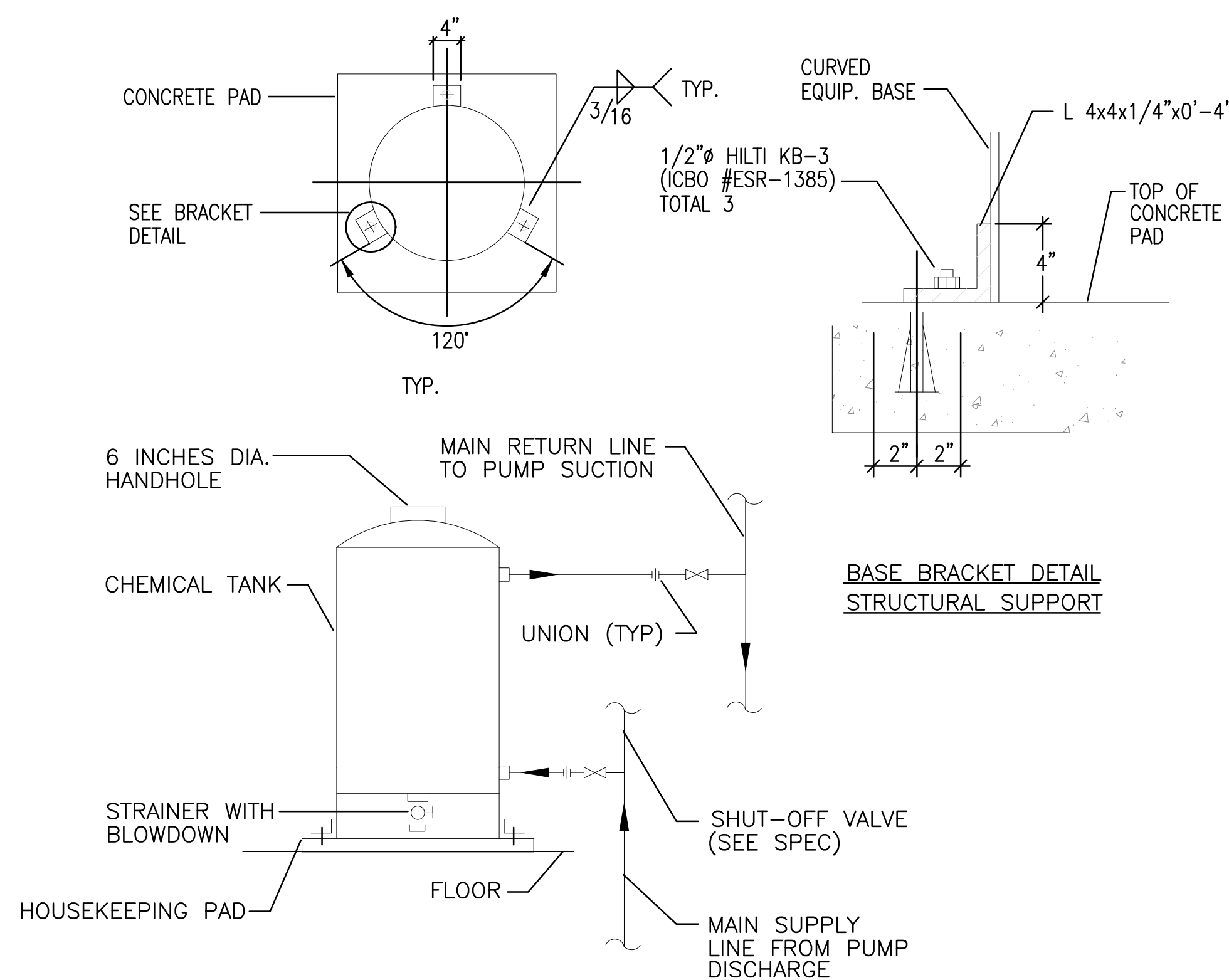
7



COIL PIPING DIAGRAM AND FITTING DIAGRAM (OPTIONAL)

SCALE
NONE

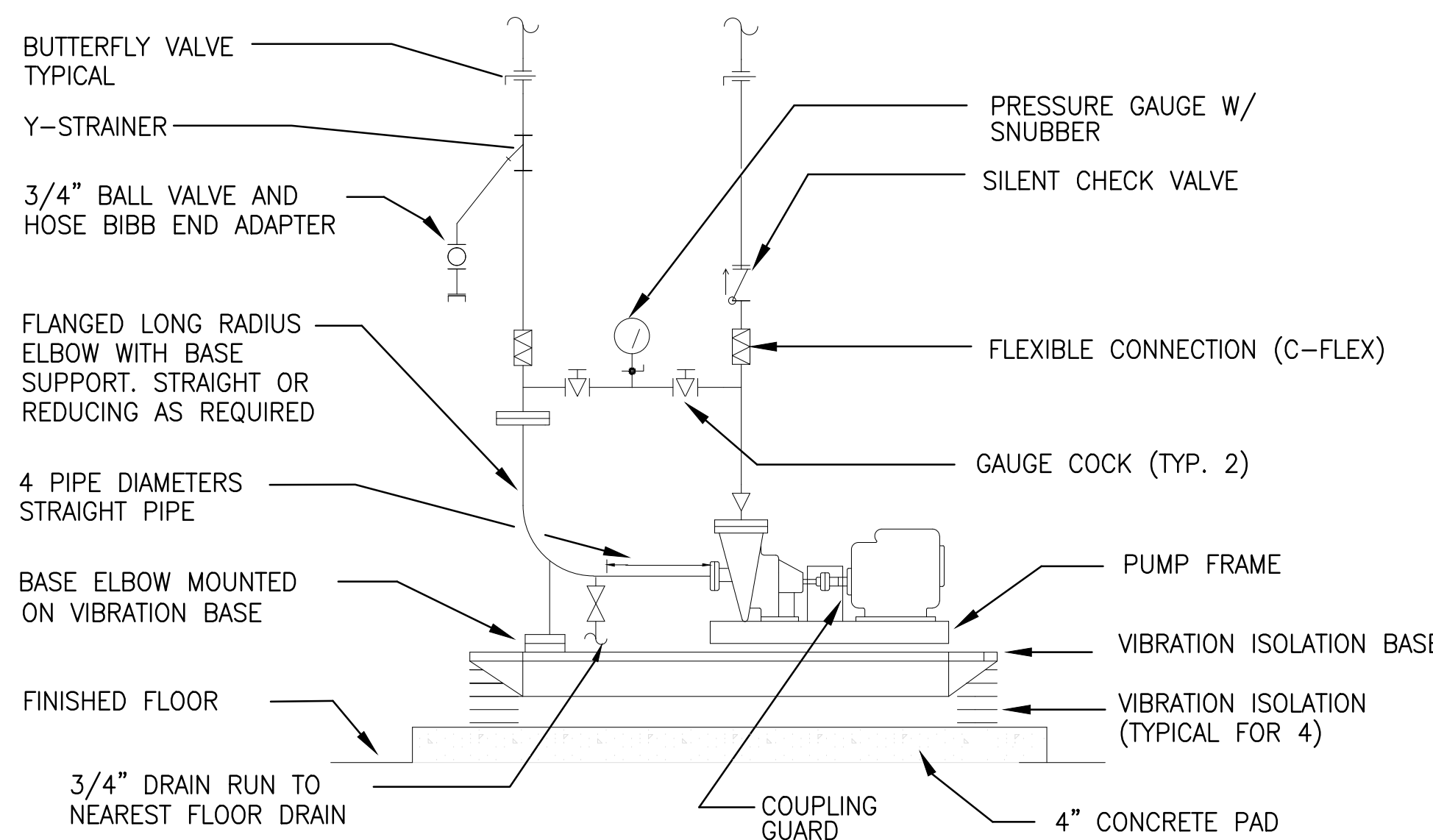
8



CHEMICAL BY-PASS FEEDER

SCALE
NONE

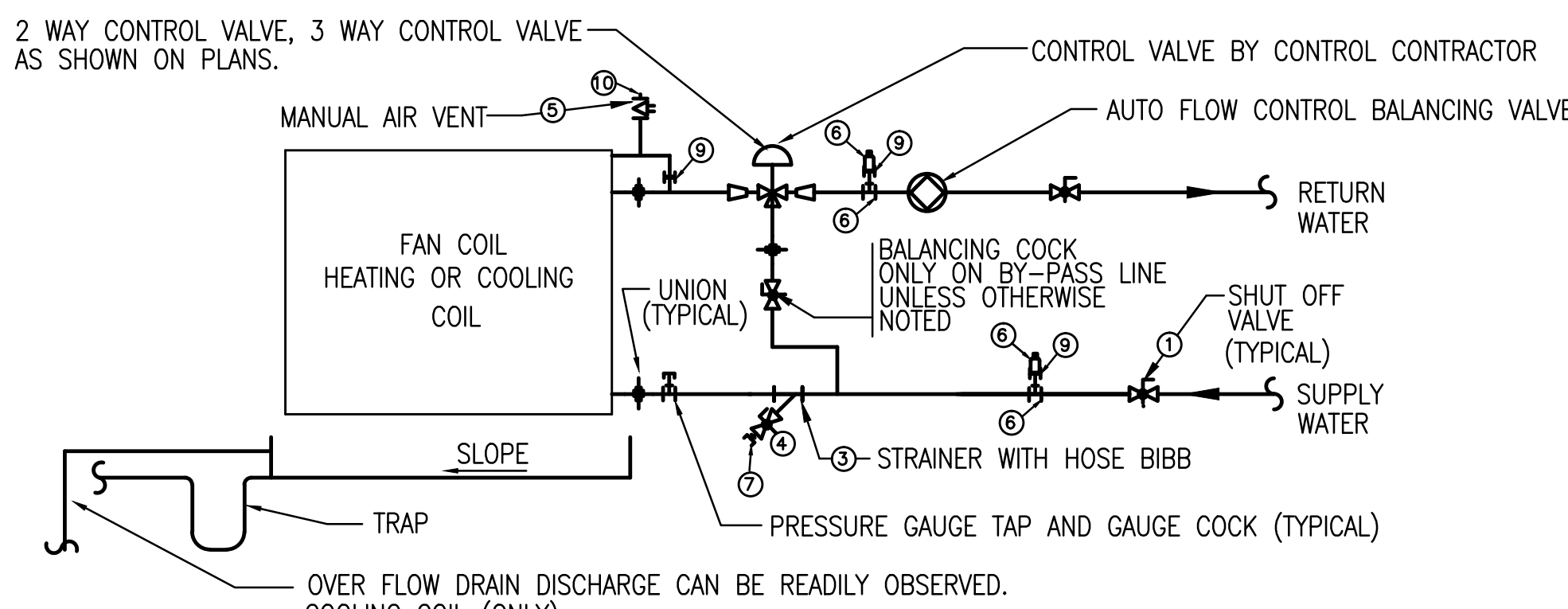
8



END SUCTION PUMP PIPING DIAGRAM

SCALE
NONE

9

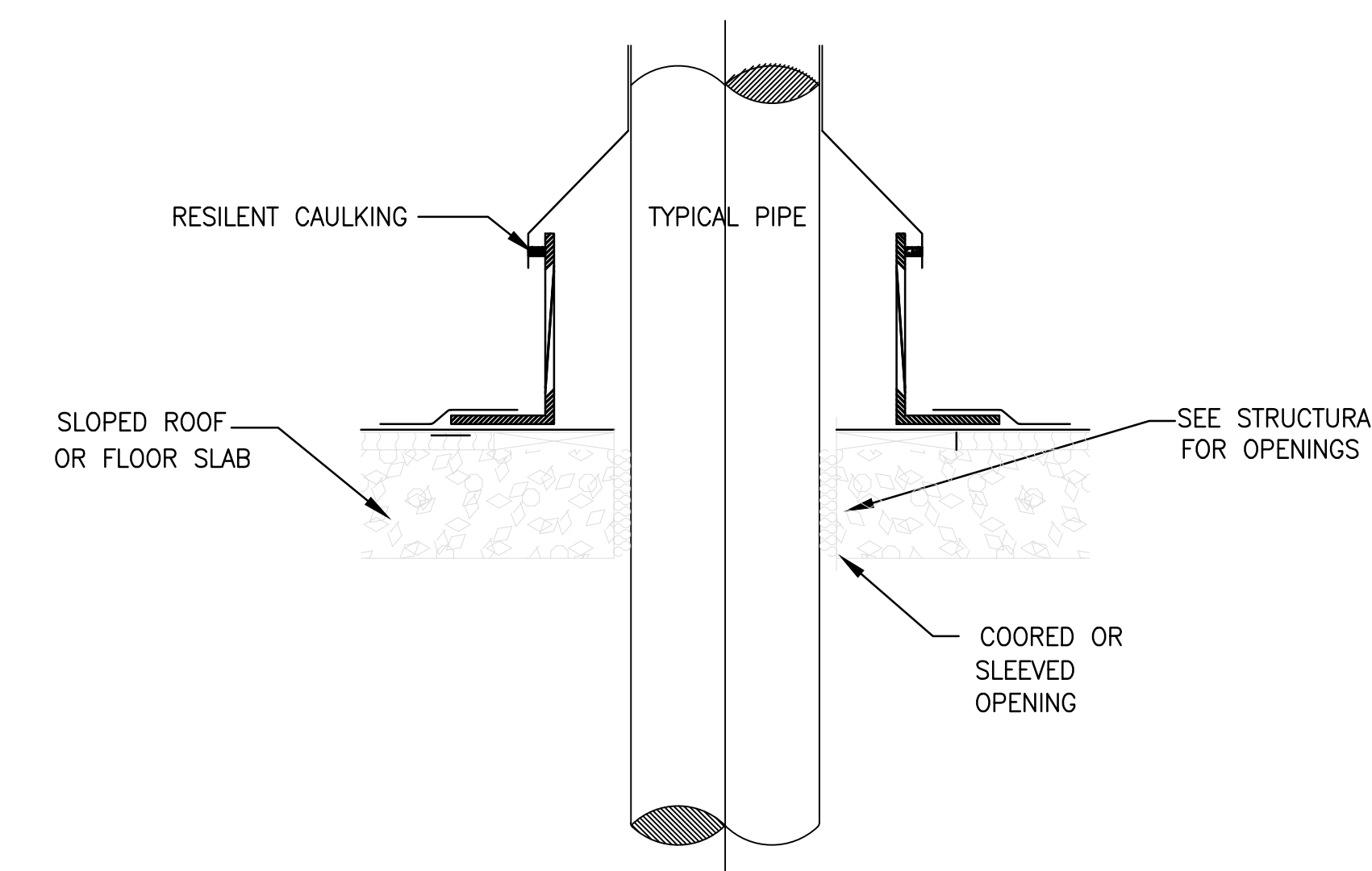


PIPING AND FITTING SCHEDULE			
SYMBOL	SIZE	DESCRIPTION	END CONN.
①	PIPE SIZE	BALL VALVE SIMILAR TO NIBCO S-585-70 (FULL PORT)	SOLDER
②	PIPE SIZE	FLOW CONTROL BALANCING VALVE SIMILAR TO FDI OR MEMORY STOP COMB. BALANCING & SHUT-OFF VALVE	SOLDER
③	BRANCH SIZE	"Y" STRAINER SIMILAR TO MULLER 3531/2 M	SOLDER
④	1/2"	BALL VALVE SIMILAR TO NIBCO T-585-70 FOR DRAIN	THREADE
⑤	1/4"	BALL VALVE SIMILAR TO NIBCO T-585-70 FOR VENT	THREADE
⑥	1/4"	PETE'S PLUG SIMILAR TO NIBCO 400 316 S.S.	THREADE
⑦	1/2"	1/2" MNPT HOSE ADAPTER	THREADE
⑧	1/2"	CXCXC TEE COPPER UNLESS NOTED OTHERWISE (U.N.O.)	SOLDER
⑨	1/2" X 1/4"	COPPER 1/2"FTG X 1/4" FNPT ADAPTER (U.N.O.)	SOLDER TO THR'D
⑩	1/4"	BRASS PLUG	THREADE

COIL PIPING DIAGRAM AND FITTING SCHEDULE

SCALE
NONE

4

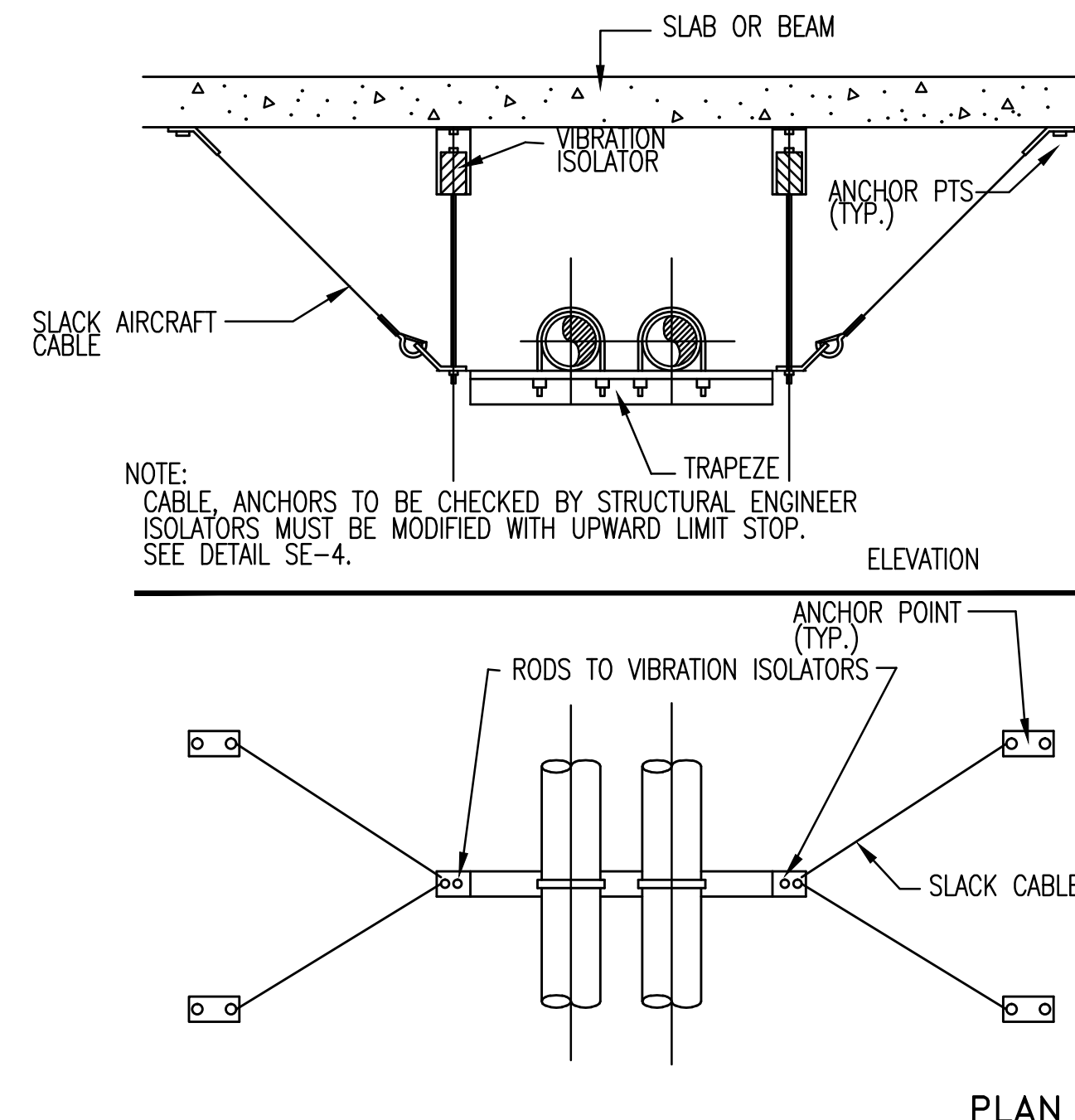


1. PROVIDE PITCH POCKET CONSTRUCTION, ADDITIONAL FLASHING OR WEATHER CAP AS REQUIRED FOR WATERPROOF CONSTRUCTION. DO NOT MECHANICALLY TIE THE PIPE TO STRUCTURE IN ANY WAY.
2. SPACE BETWEEN PIPE AND SLEEVE SHALL BE FREE OF ANY FOREIGN MATERIAL.

VERTICAL PIPE PENETRATIONS THRU ROOF DETAIL

SCALE
NONE

5

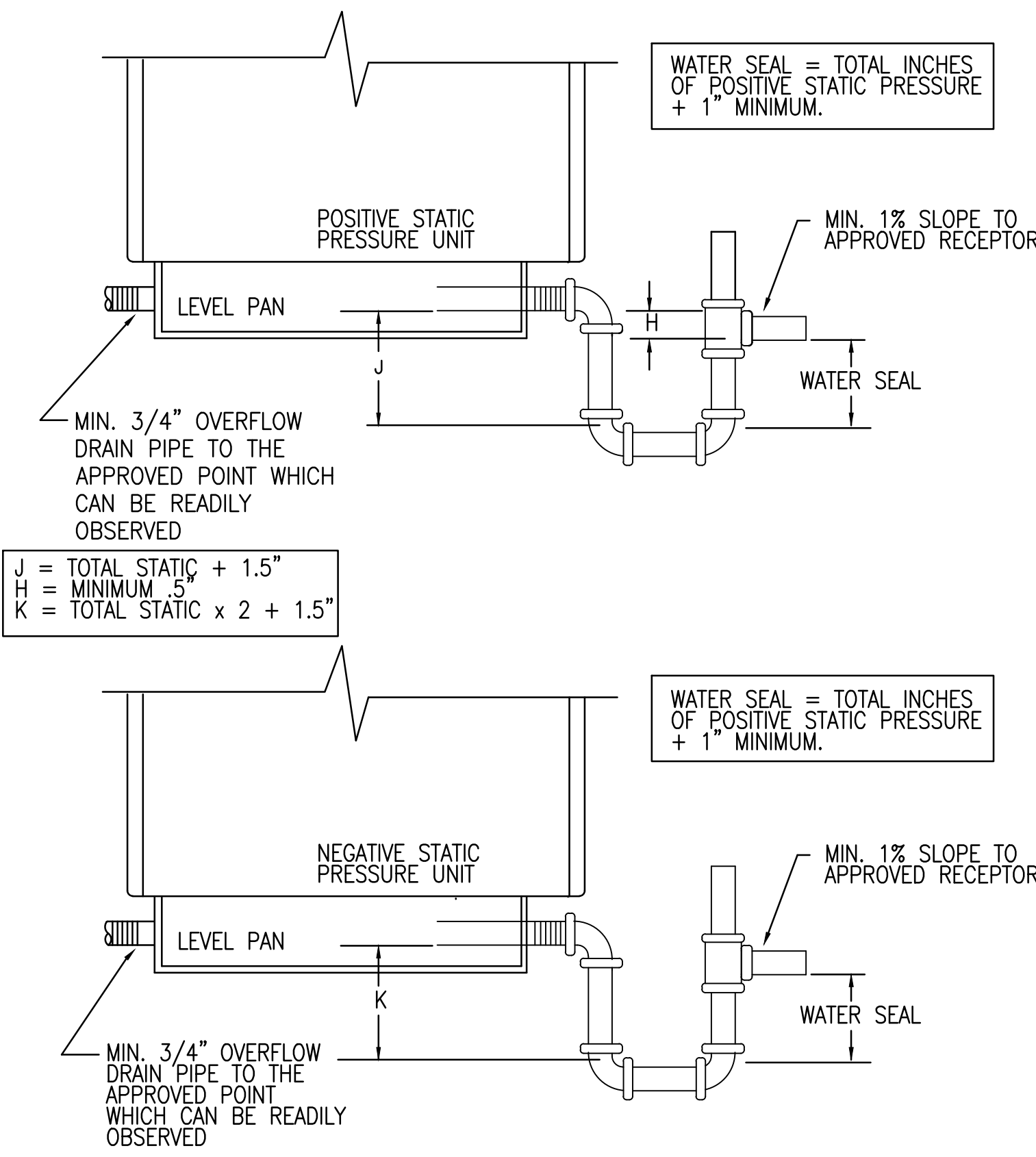


- NOTES:
1. CABLE, ANCHORS, ETC. TO BE CHECKED BY STRUCTURAL ENGINEER.
 2. MAXIMUM SPACING INTERVAL TO BE DETERMINED BY STRUCTURAL ENGINEER.
 3. LOCATE VIBRATION ISOLATION HANGER DIRECTLY ABOVE SEISMIC RESTRAINT AS INDICATED.
 4. ISOLATORS MUST BE MODIFIED WITH UPPER TRAVEL LIMIT STOP. SEE DETAIL SE-4

ALL-DIRECTIONAL RESTRAINT DETAIL
.-SUSPENDED PIPE TRAPEZE

SCALE
NONE

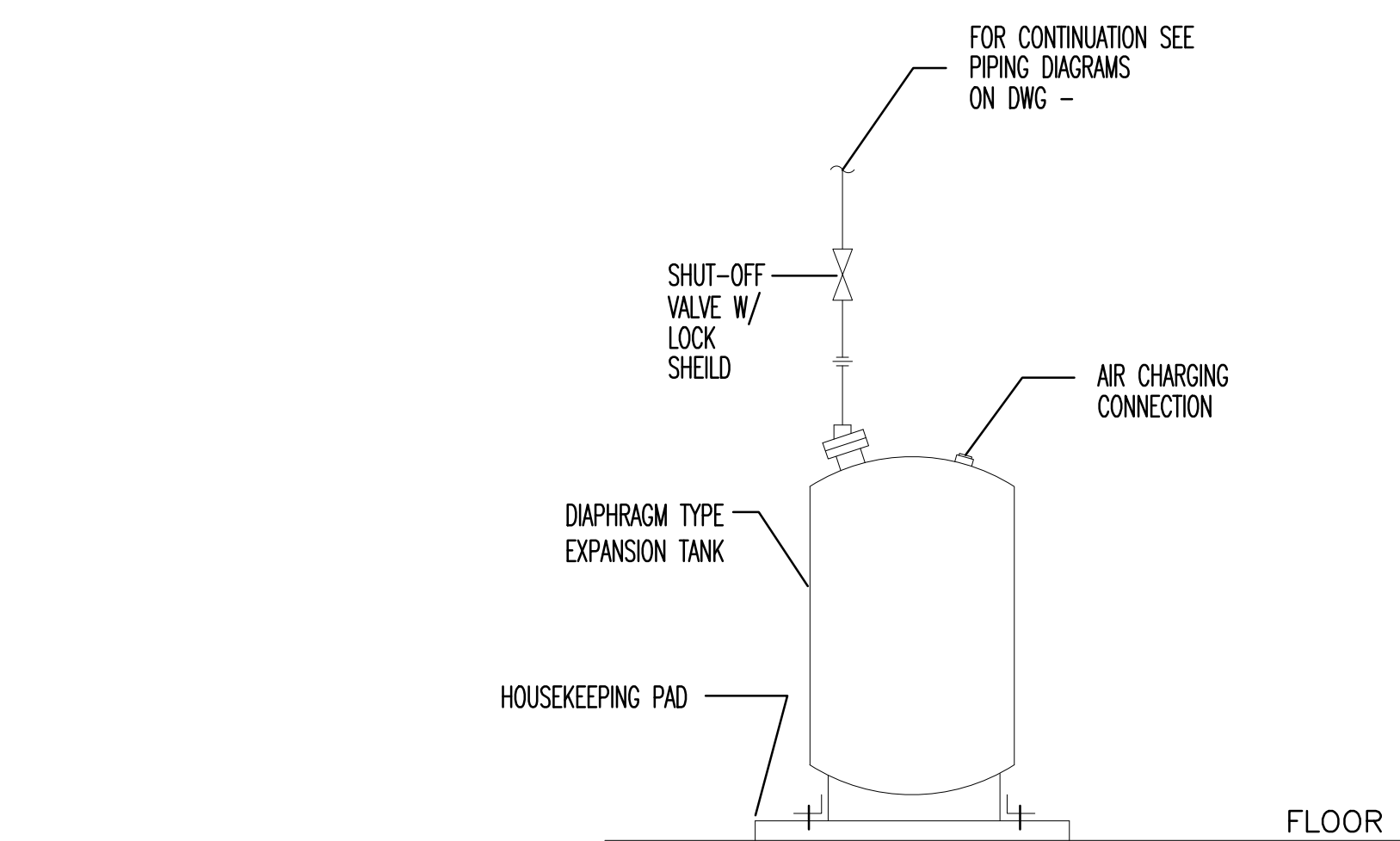
6



CONDENSATE DRAIN AND TRAP PIPING DETAIL

SCALE
NONE

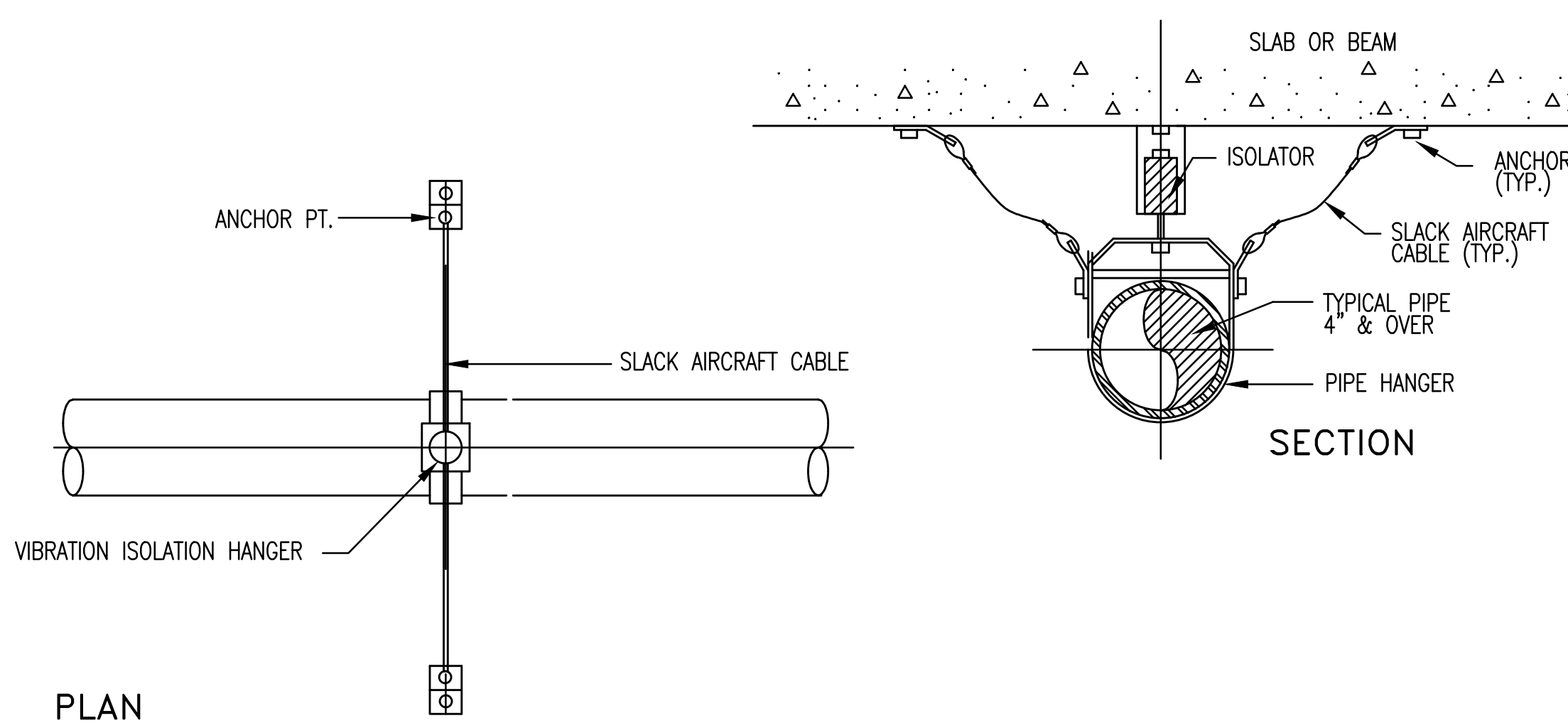
1



BLADDER EXPANSION TANK

SCALE
NONE

2



- NOTES:
1. CABLE, ANCHORS, HANGER SPACING ETC. TO BE DESIGNED BY A STRUCTURAL ENGINEER LICENSED IN THE STATE WHICH THE WORK IS TO TAKE PLACE.
 2. HANGER LOADS & LOCATIONS TO BE SUBMITTED FOR REVIEW BY STRUCTURAL ENGINEER PRIOR TO CONSTRUCTION.
 3. LOCATE VIBRATION ISOLATION HANGER DIRECTLY ABOVE SEISMIC RESTRAINT AS INDICATED.
 4. MUST BE MODIFIED WITH UPPER TRAVEL LIMIT STOP. SEE DETAIL SE-4

LATERAL RESTRAINT DETAIL-PIPING

SCALE
NONE

3

REVISION	DATE	DESCRIPTION
1	06/07/2015	Medium 02
2	09/04/2015	Medium 03
3	10/20/2015	Medium 04
4	06/27/2016	Medium 05



howard laks architects

1945 hewlett street
santa monica, ca 90401

CONSULTANTS
Donald F. Dickerson, Architect
CONSULTING MECHANICAL & ELECTRICAL ENGINEERS
1700 WILSHIRE BOULEVARD, SUITE 404
SANTA MONICA, CA 90401
TEL: (310) 310-1888
FAX: (310) 310-1889
E-MAIL: ddickerson@hla.com
JOB NO. 201225

710 WILSHIRE BOULEVARD
MIXED-USE HOTEL PROJECT
SANTA MONICA - CALIFORNIA 90401

DETAILS

DRAWN	CM
CHECKED	-
APPROVED	-
SCALE	-
SHEET	M-402
DATE	June 25, 2013
PROJECT NUMBER	HLA 0000000-00000