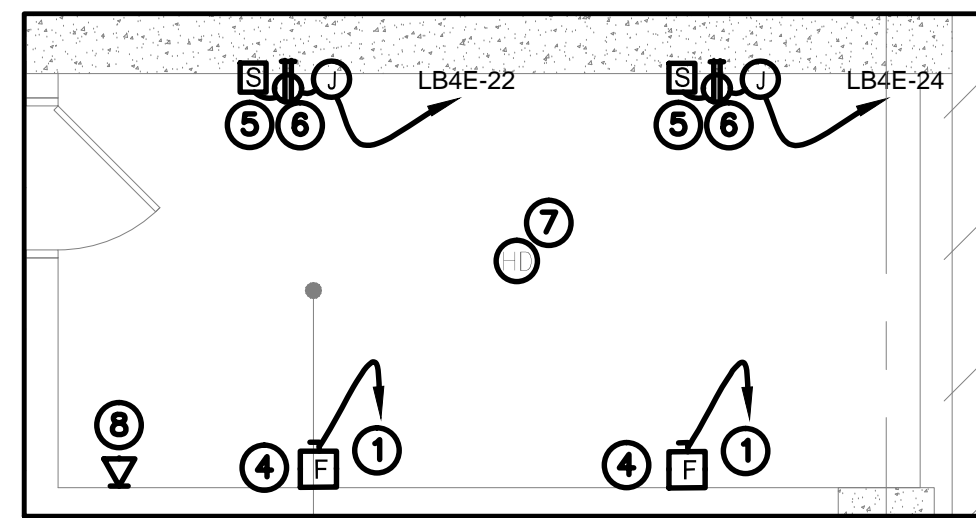


ENLARGED ELEVATOR #1 MACHINE ROOM  
1/4" = 1'-0"



ENLARGED ELEVATOR #1 MACHINE ROOM  
1/4" = 1'-0"

#### KEY NOTES:

1. REFER TO SINGLE LINE DIAGRAM FOR CIRCUIT INFORMATION.
2. CARBON MONOXIDE SENSORS (BY HVAC CONTRACTOR). FOR QUANTITIES AND LOCATION REFER TO HVAC DRAWINGS. INTERCONNECT ALL SENSORS ON THIS PLAN WITH 3/4" CONDUIT AND RUN 1" CONDUIT FROM LAST SENSOR TO CARBON MONOXIDE CONTROL PANEL.
3. PROVIDE ADDITIONAL 1" C TO MPOE ROOF FOR FUTURE EV CHARGER.
4. DISCONNECT SWITCH FOR ELEVATOR MOTOR (COORDINATE SIZE WITH EQUIPMENT PROVIDER PRIOR TO INSTALLATION)
5. LOCKABLE SWITCH FOR ELEVATOR CAB LIGHTING.
6. JUNCTION BOX FOR ELEVATOR CONTROLLER.
7. HEAT DETECTOR TO CONTROL SHUNT TRIP CIRCUIT BREAKER FOR ELEVATOR MOTOR.
8. TELEPHONE OUTLET. RUN 3/4" C.O. TO NEAREST TELEPHONE BACKBOARD.

#### SHEET NOTES:

1. FOR EXACT LOCATION AND CONTROL REQUIREMENTS OF HVAC AND PLUMBING EQUIPMENT REFER TO CORRESPONDING DRAWINGS.
2. PROVIDE EXTRA UNSWITCHED HOT WIRE FOR EXIT SIGNS. LOCATION AND QUANTITY OF EXIT SIGNS SHALL MATCH ARCHITECTURAL DRAWINGS.

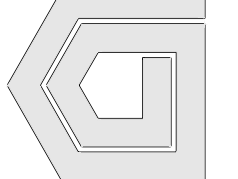
DESIGN	DATE	DESCRIPTION
REV	05/07/2015	Medium 02
REV	09/04/2015	Medium 03
REV	10/20/2015	Medium 04
REV	05/27/2016	Medium 05



howard laks architects  
1545 hewlett street  
santa monica, ca 90401  
voice : 310-393-4465  
fax : 310-393-2230

#### CONSULTANTS

Donald F. Diskerup Associates  
CONSULTING MECHANICAL & ELECTRICAL ENGINEERS  
1100 WILSHIRE BOULEVARD, SUITE 404  
SANTA MONICA, CA 90401  
(310) 393-2230  
E-MAIL: DONALD@DFA.COM



710 WILSHIRE BOULEVARD  
MIXED-USE HOTEL PROJECT  
SANTA MONICA - CALIFORNIA, 90401  
PARKING FLOOR PLAN - P4

DRAWN	AH/SC
CHECKED	HLA
APPROVED	-
SCALE	1/8" = 1'-0"
SHEET	E-202
DATE	June 25, 2013
PROJECT NUMBER	HLA 0000000-00000