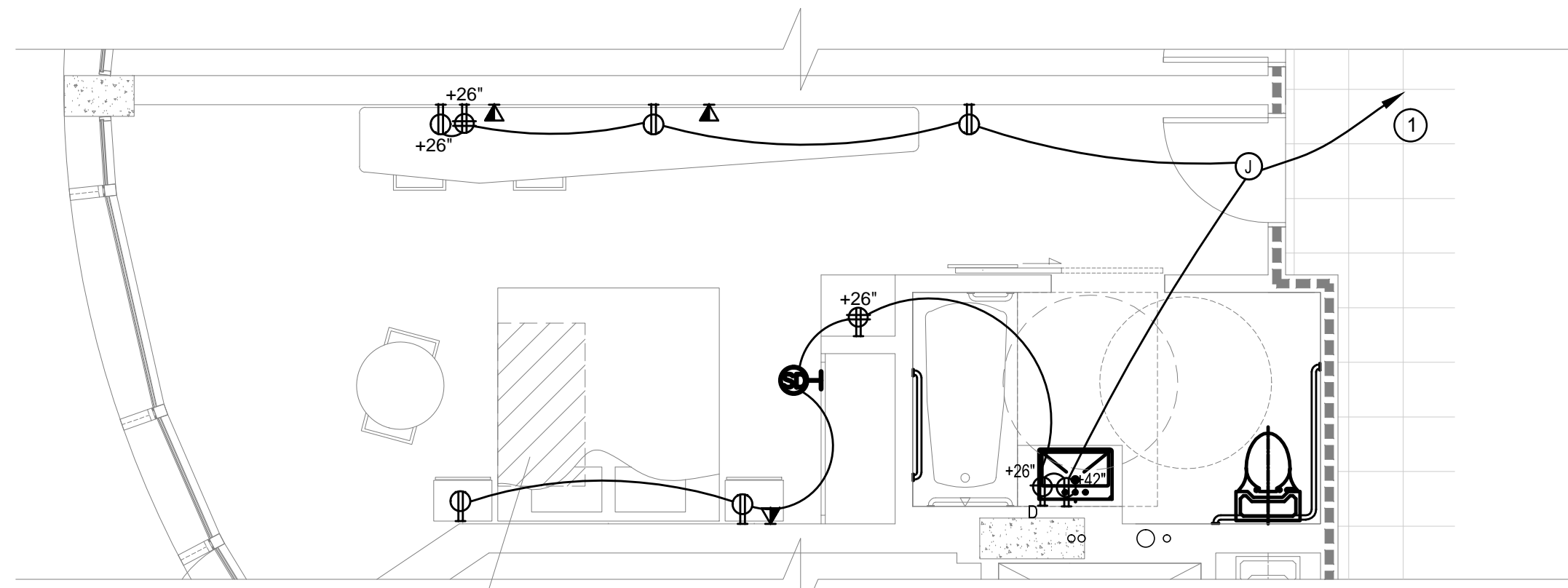


SHEET NOTES:

- FOR EXACT LOCATIONS OF OUTLETS, SWITCHES AND LIGHTING FIXTURES IN THE TYPICAL GUESTROOMS REFER TO ARCHITECTURAL DRAWINGS.
- FOR EXACT LOCATIONS OF FAN COIL UNITS REFER TO HVAC DRAWINGS.
- SWITCHING SCHEME SHOWN ON THIS DRAWING SHALL BE COORDINATED AND CONFIRMED WITH OWNER AND ARCHITECT.
- ALL OUTLETS WITHIN 6 FEET OF SINKS SHALL BE GFCI TYPE.

KEY NOTES:

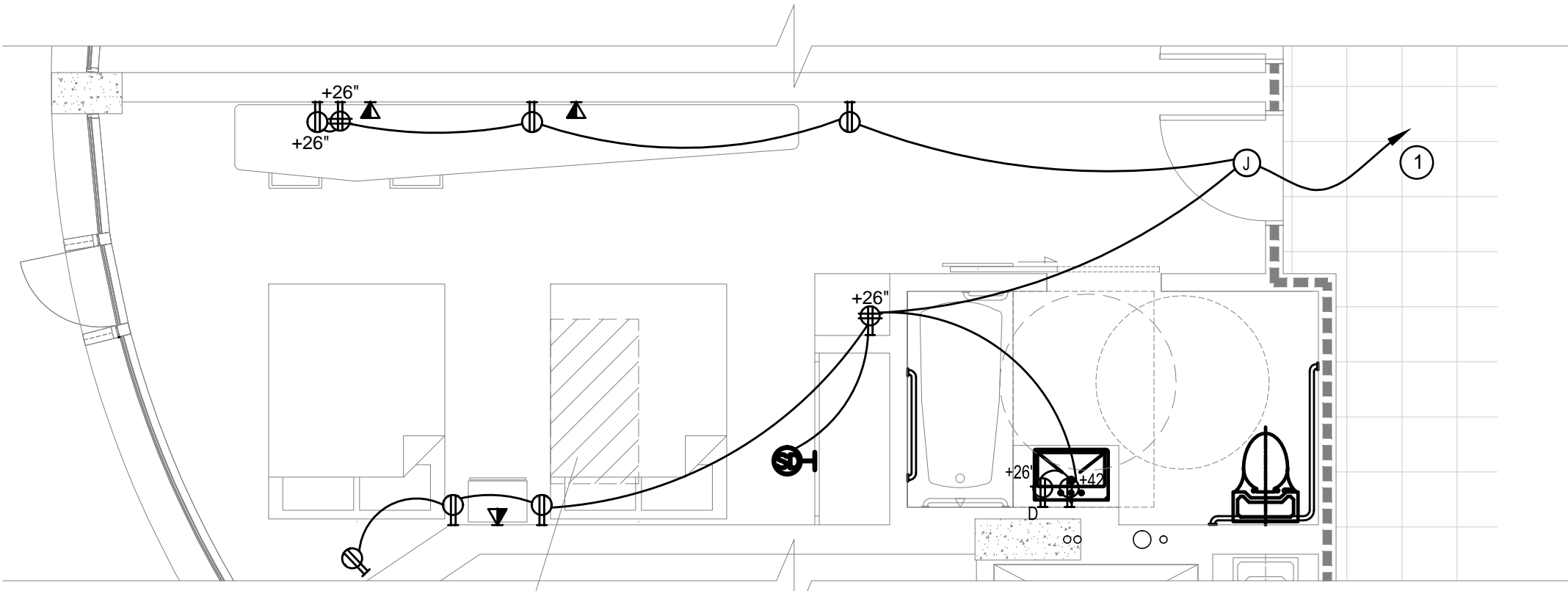
- FOR HOME RUN DESIGNATION AND CIRCUIT NUMBERS REFER TO GUEST ROOM FLOOR PLANS.
- PROVIDE CONTACT SWITCH AT TOP OF CLOSET DOOR TO OPERATE CLOSET LIGHT WHEN CLOSET IS AJAR.



ENLARGED TYP. GUEST ROOM (ACCESSIBLE SHOWER)

8

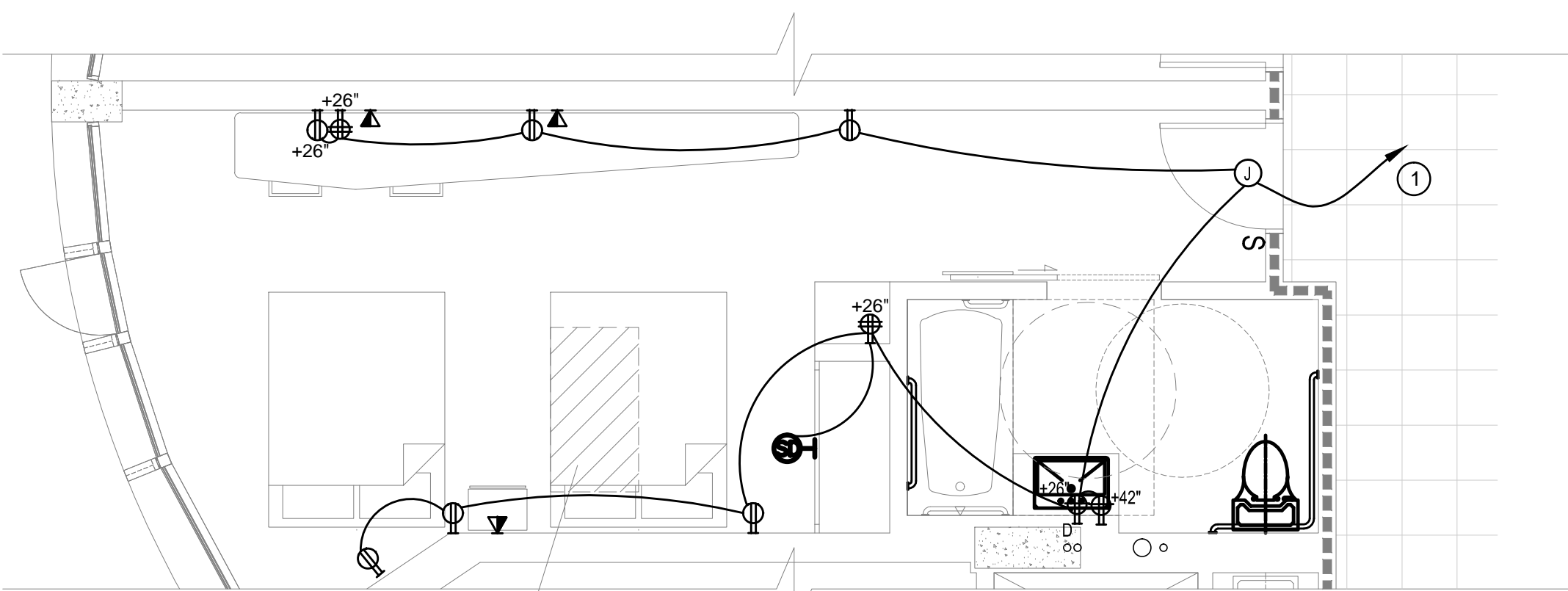
1/4" = 1'-0"



ENLARGED TYP. TWO BEDDED GUEST ROOM (ACCESSIBLE SHOWER)

7

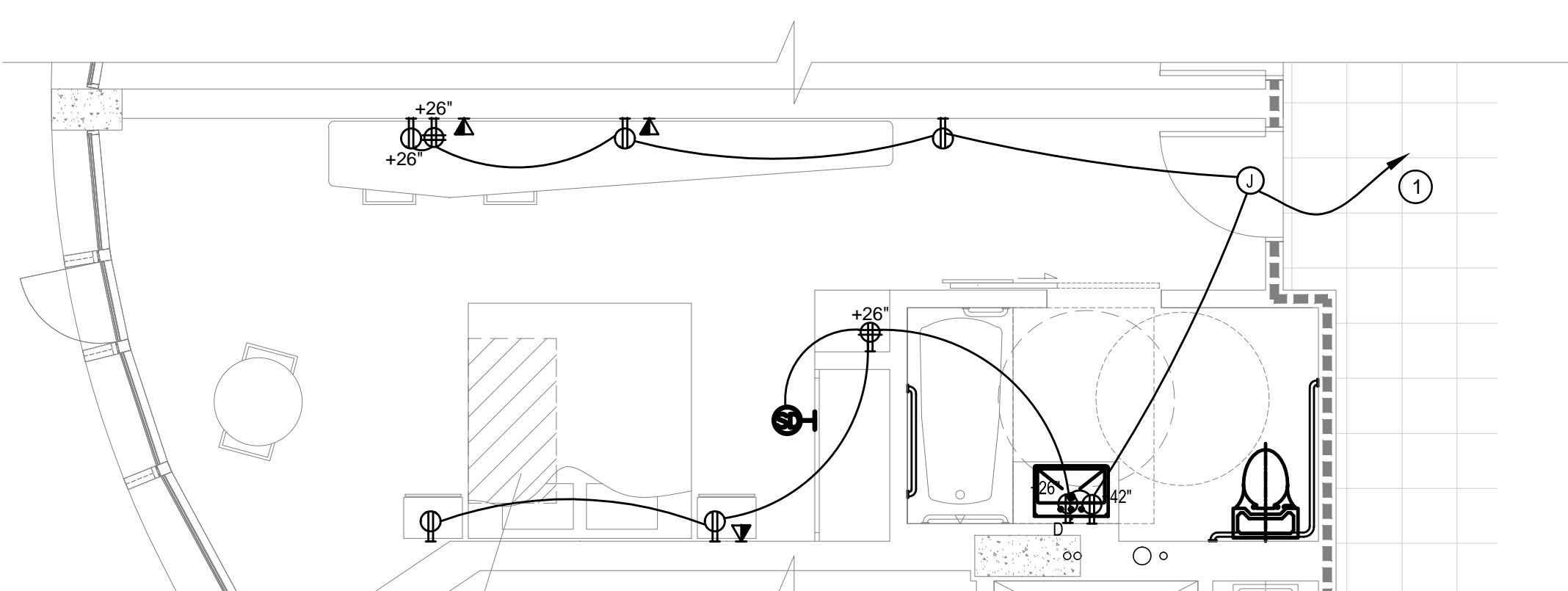
1/4" = 1'-0"



ENLARGED TYP. TWO BEDDED GUEST ROOM (ACCESSIBLE BATHTUB)

6

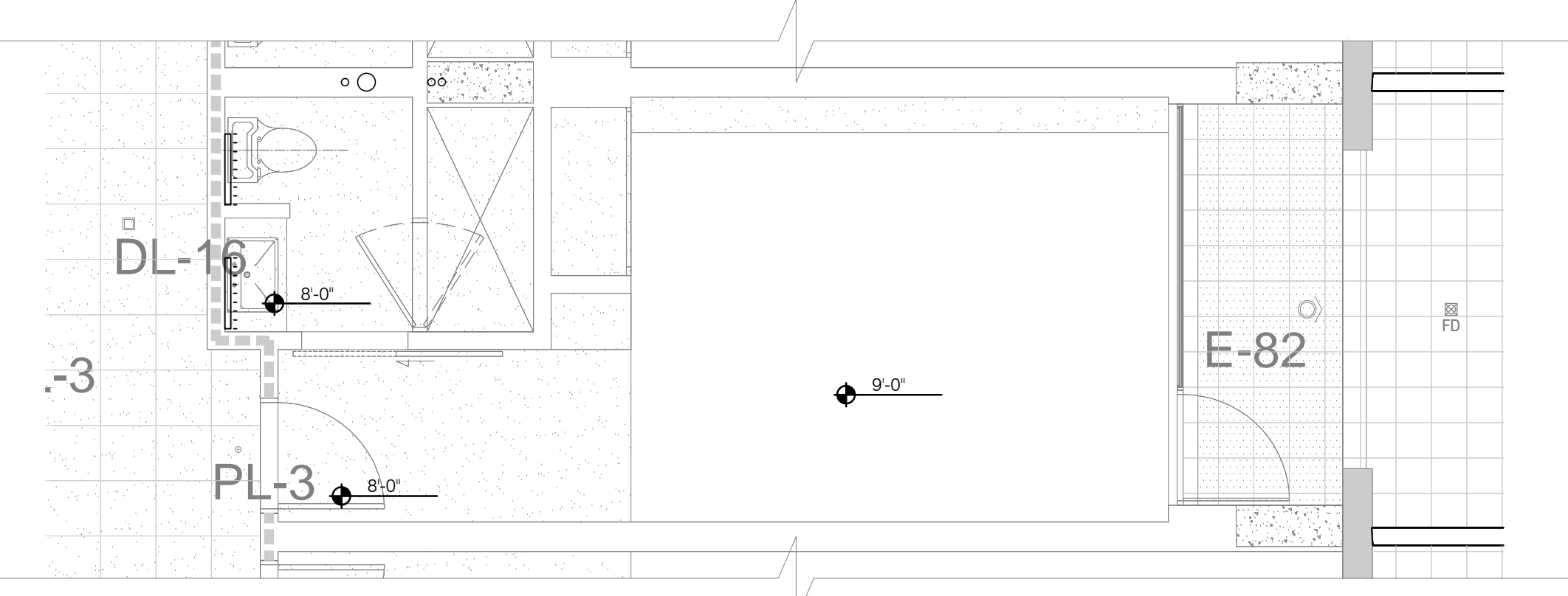
1/4" = 1'-0"



ENLARGED TYP. GUEST ROOM (ACCESSIBLE BATHTUB)

5

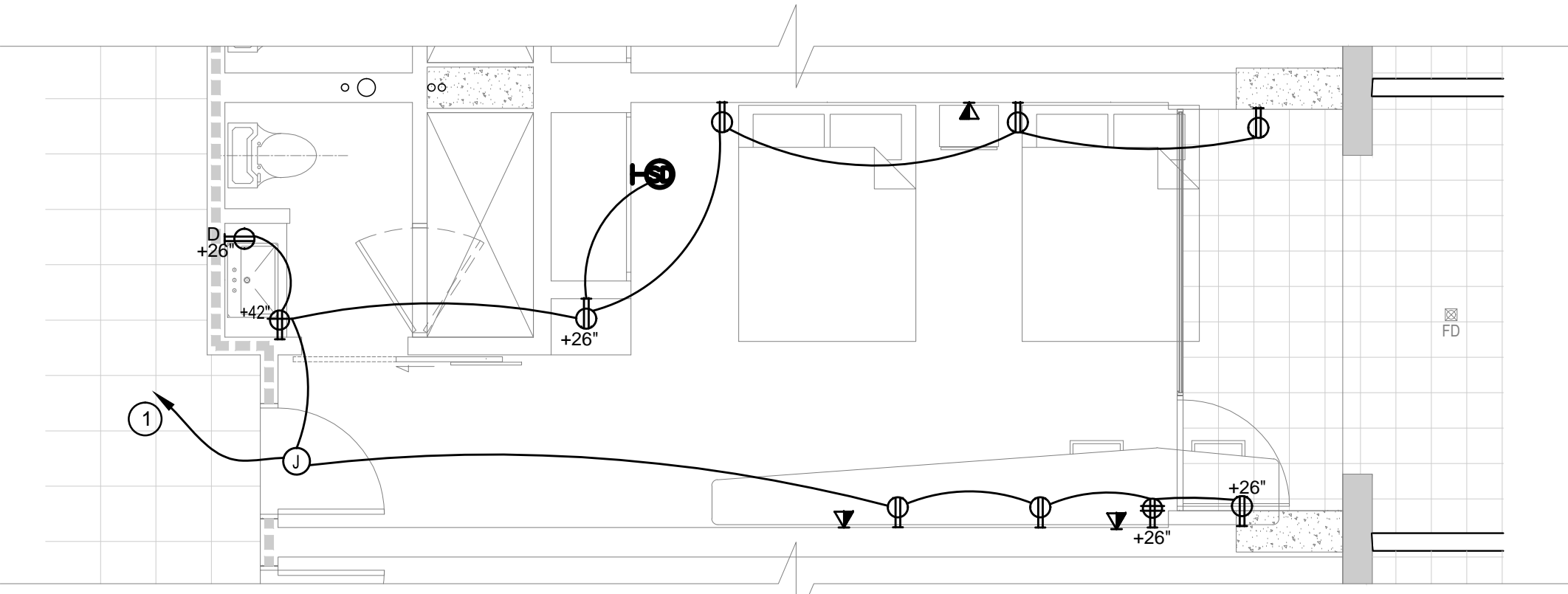
1/4" = 1'-0"



ENLARGED RCP, TYP. GUEST ROOM

4

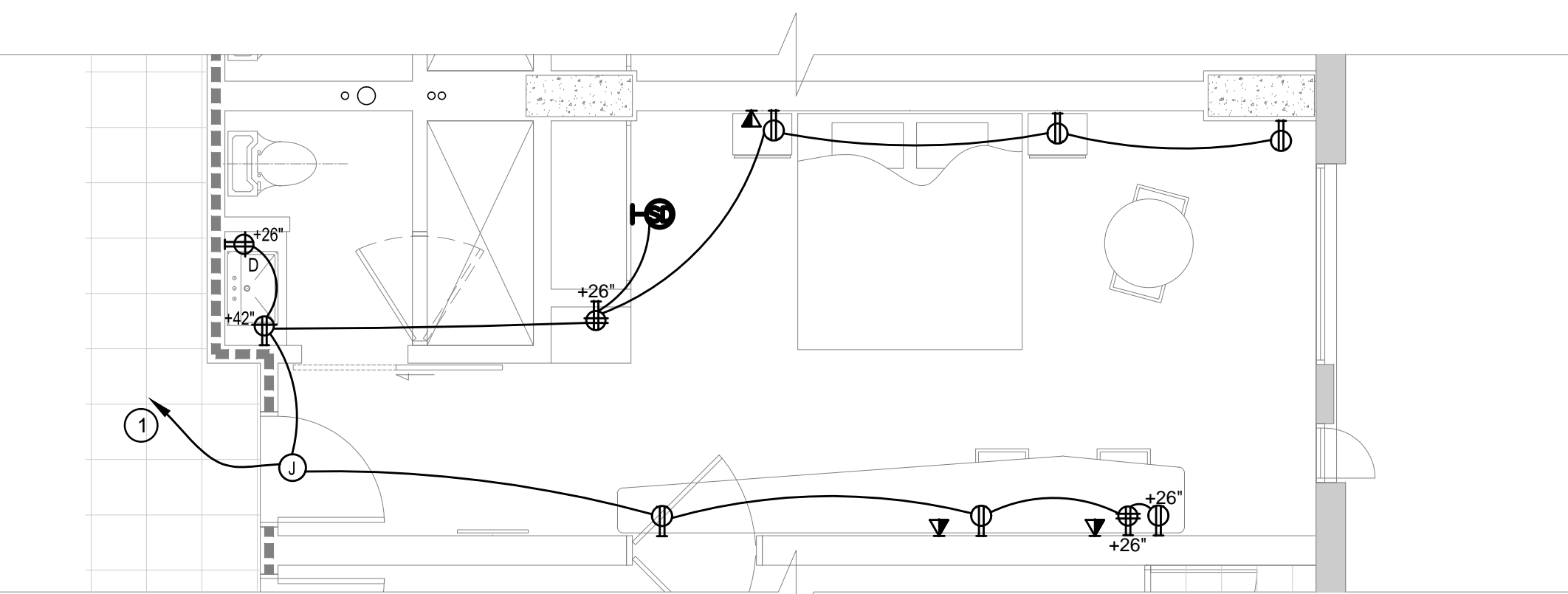
1/4" = 1'-0"



ENLARGED TYP. TWO BEDDED GUEST ROOM

3

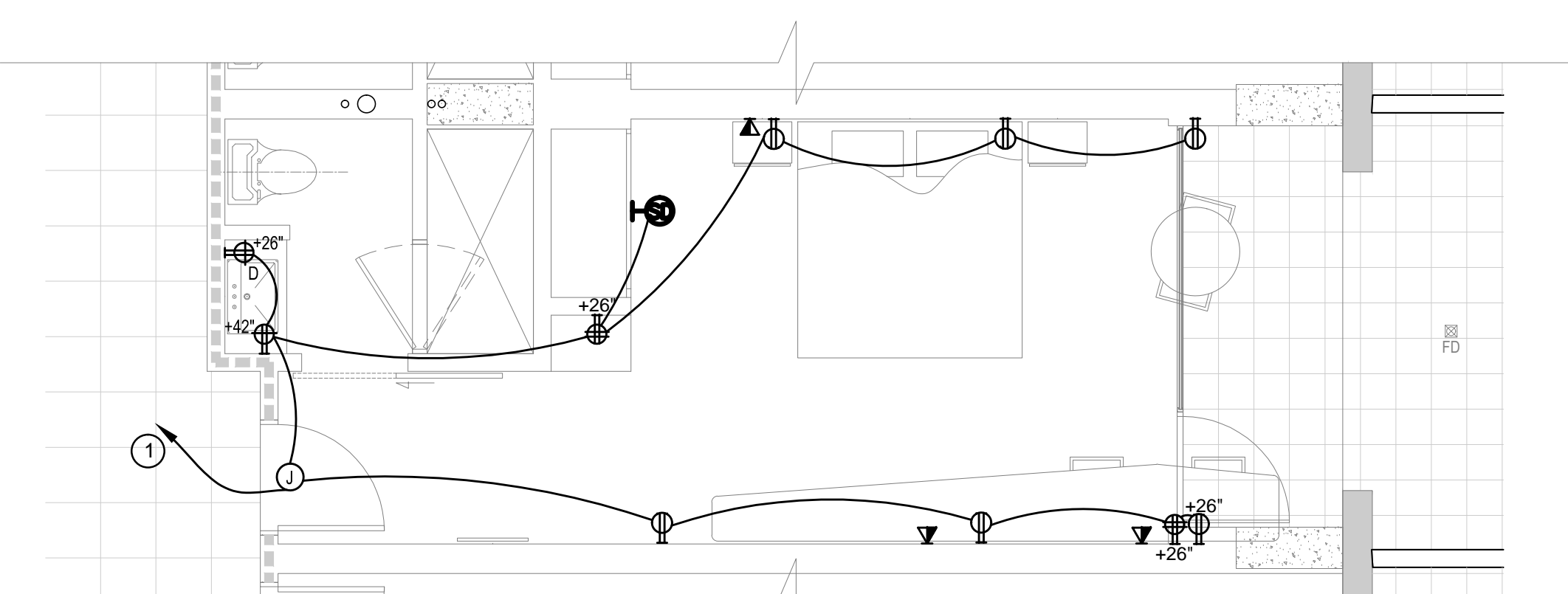
1/4" = 1'-0"



ENLARGED TYP. 6TH FL OOR GUEST ROOM

2

1/4" = 1'-0"



ENLARGED TYP. GUEST ROOM

1

1/4" = 1'-0"

TELEVISION OUTLET -
SWITCH, THREE WAY -
KEY OPERATED SWITCH -
THERMOSTAT -
CLOCK -

DUPLEX RECEPTACLE -
FOURPLEX RECEPTACLE -
DUPLEX WITH GROUND FAULT INDICATOR -
DATA OUTLET -
PHONE OUTLET -
COMBINATION TELEPHONE/DATA OUTLET -

EXTERIOR DIRECTIONAL TYPE A - 50W
RECESSED TROUGH LIGHTS - 32 W

DOWN LIGHT TYPE A - 32W
DOWN LIGHT TYPE B - 32W
DOWN LIGHT TYPE C - 32W
RECESSED WALL MOUNTED - 50W
SURFACE WALL MOUNTED - 50W
SPECIALTY PENDANT - 300W

SP1

1X8' PENDANT T8- 4X28 W
SURFACE MOUNTED T8- 2X28 W
PENDANT MOUNTED T8- 2X28 W
WALL MOUNTED T8 - 2X14W
2'X4' RECESSED FLUORESCENT - 2X28W
2'X2' RECESSED FLUORESCENT - 2X14W

REFLECTED CEILING PLAN LEGEND

CEILING HEIGHT ABOVE FINISH FLOOR
LAY-IN ACOUSTICAL TILE CEILING
SUSPENDED GYPSUM BOARD CEILING
NO CEILING; OPEN TO STRUCTURE ABOVE

DATE
June 25, 2013
PROJECT NUMBER
HLA 0000000-00000



howard laks architects
1545 hewlett street
santa monica, ca 90401
voice : 310-393-4465
fax : 310-393-2230

CONSULTANTS
Donald F. Dickerson Associates
CONSULTING MECHANICAL & ELECTRICAL ENGINEERS
1400 WILSHIRE BLVD., SUITE 404
SANTA MONICA, CA 90401
TEL: 310-393-4465
FAX: 310-393-2230
E-MAIL: ddickerson@dfda.com
JOB NO. 201225

710 WILSHIRE BOULEVARD
MIXED-USE HOTEL PROJECT
SANTA MONICA - CALIFORNIA, 90401
ENLARGED GUEST ROOM PLANS

DATE
June 25, 2013
PROJECT NUMBER
HLA 0000000-00000