

- NOTES:
1. THE PIPE IS BURIED AT LEAST 2 FEET DEEP.
 2. ALL HEATING CABLE CONNECTIONS ARE MADE ABOVE GROUND.
 3. THE POWER CONNECTION AND END SEAL ARE MADE IN UL LISTED AND CSA CERTIFIED JUNCTION BOXES (SUPPLIED BY OTHERS).
 4. THE XL-TRACE HEATING CABLE AND THE RTD ARE PROTECTED FROM THE PIPE TO THE POWER CONNECTION BOX IN UL LISTED AND CSA CERTIFIED WATER-SEALED CONDUIT (3/4" DIA. MIN.) SUITABLE FOR LOCATION (SUPPLIED BY OTHERS).
 5. CLOSED-CELL, WATERPROOF THERMAL INSULATION WITH WATERPROOF COVERING SUITABLE FOR DIRECT BURIAL IS USED (SUPPLIED BY OTHERS).
 6. IF SPRAY FOAM INSULATION IS USED, THE XL-TRACE HEATING CABLE MUST BE COVERED WITH AT-180 ALUMINUM TAPE.
 7. A 30-MA GROUND-FAULT PROTECTION DEVICE MUST BE USED.
 8. THE HEATING CABLE IS INSTALLED PER MANUFACTURER'S INSTALLATION INSTRUCTIONS.

- NOTES:
1. INSTALLATION TO BE COMPLETED IN ACCORDANCE WITH MANUFACTURER'S SPECIFICATIONS.
 2. DO NOT SCALE DRAWINGS.
 3. CONTRACTORS NOTE: FOR PRODUCT AND COMPANY INFORMATION VISIT www.CADdetails.com/info REFERENCE NUMBER 3408-060.

BURIED GREASY WASTE WITH LOOPED XL-TRACE & CONTROL INSTALLATION DETAIL

SCALE
NONE

5

GREASY WASTE FLOW MAINTENANCE (BELOW GROUND)

SCALE
NONE

3

2000 GALLON GREASE INTERCEPTOR

MODEL JP2000G
TRAFFIC RATED ACCEPTED BY UPC ®

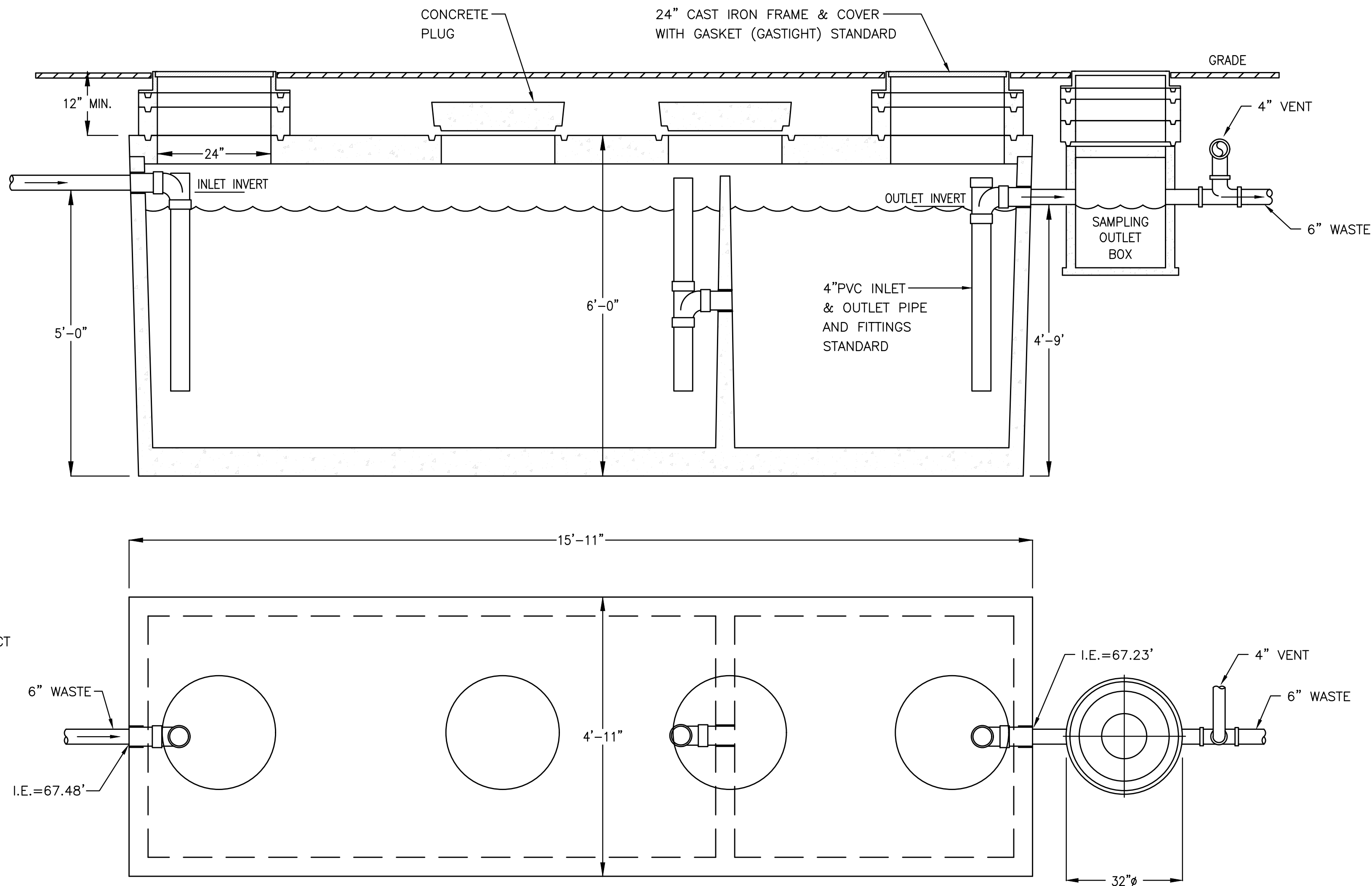
LIQUID CAPACITY: 2,000 GALLONS.

TANK DESIGNED FOR H-20 TRAFFIC WHEEL LOAD WITH DRY SOIL CONDITIONS (WATER TABLE BELOW TANK)
EARTH COVER OVER TANK NOT TO EXCEED 6 FT.

SUITABLE NATIVE OR SUB-BASE SHALL BE PREPARED TO HANDLE ANTICIPATED LOADS.
THE EXCAVATION SHALL BE BEDDED WITH SUITABLE GRANULAR MATERIAL AND SHALL BE COMPACTED TO 90% MAXIMUM DRY DENSITY, OR TO REQUIREMENTS OF THE PROJECT GEOTECHNICAL ENGINEER.

FOR COMPLETE DESIGN AND PRODUCT INFORMATION CONTACT JENSEN PRECAST.

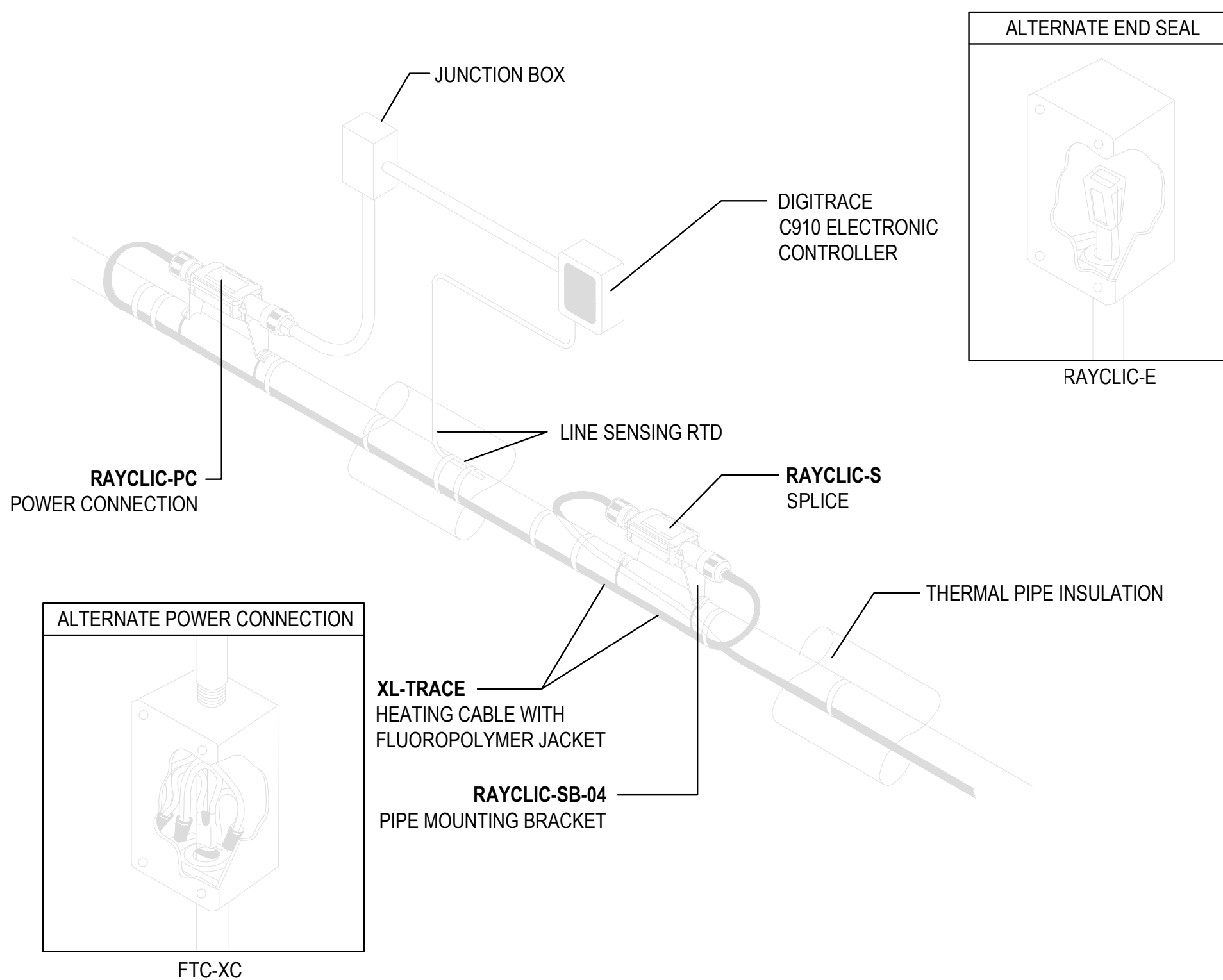
GREASE REMOVAL SERVICE
JR GREASE SERVICES
PHONE:
LOS ANGELES COUNTY (562) 551 8727
ORANGE COUNTY (714) 794 8727
24 HOUR SERVICE
EMAIL: INFO@GREASESERVICES.COM
FAX: (866) 929 5897



SCALE
NONE

1

2000 GALLON GREASE INTERCEPTOR



- NOTES:
1. INSTALLATION TO BE COMPLETED IN ACCORDANCE WITH MANUFACTURER'S INSTALLATION INSTRUCTIONS.
 2. ALL CONNECTIONS MUST BE MADE OFF THE PIPE.
 3. FLUOROPOLYMER (CT) JACKET REQUIRED FOR GREASY WASTE APPLICATION.
 4. RAYCLIC-PC AND FTC-XC POWER CONNECTION KITS INCLUDE RAYCLIC-E END SEAL.
 5. DO NOT SCALE DRAWINGS.
 6. CONTRACTORS NOTE: FOR PRODUCT AND COMPANY INFORMATION VISIT www.CADdetails.com/info REFERENCE NUMBER 3408-062.

TYPICAL ABOVE GROUND PIPING FOR GREASY WASTE LINE INSTALLATION DETAIL

SCALE
NONE

6

GREASY WASTE FLOW MAINTENANCE (ABOVE GROUND)

SCALE
NONE

4

2000 GALLON SAND-OIL INTERCEPTOR

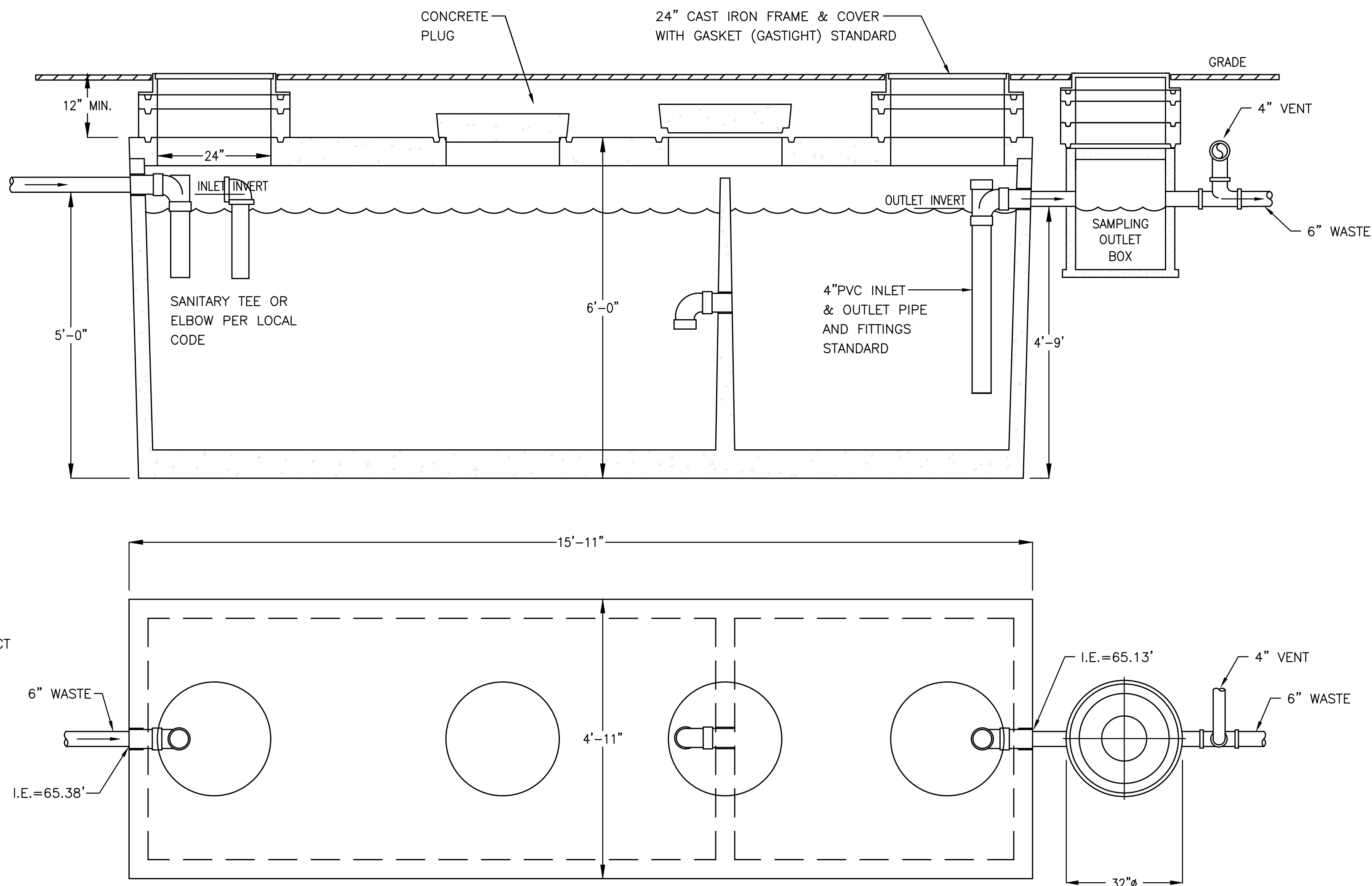
MODEL JP2000SO
TRAFFIC RATED ACCEPTED BY UPC ®

LIQUID CAPACITY: 2,000 GALLONS.

TANK DESIGNED FOR H-20 TRAFFIC WHEEL LOAD WITH DRY SOIL CONDITIONS (WATER TABLE BELOW TANK)
EARTH COVER OVER TANK NOT TO EXCEED 6 FT.

SUITABLE NATIVE OR SUB-BASE SHALL BE PREPARED TO HANDLE ANTICIPATED LOADS.
THE EXCAVATION SHALL BE BEDDED WITH SUITABLE GRANULAR MATERIAL AND SHALL BE COMPACTED TO 90% MAXIMUM DRY DENSITY, OR TO REQUIREMENTS OF THE PROJECT GEOTECHNICAL ENGINEER.

FOR COMPLETE DESIGN AND PRODUCT INFORMATION CONTACT JENSEN PRECAST.



SCALE
NONE

2

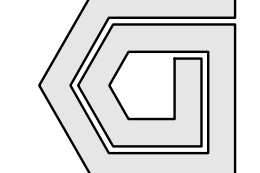
2000 GALLON SAND-OIL INTERCEPTOR

| REVISION | DATE | DESCRIPTION |
|----------|------------|-------------|
| 1 | 05/07/2013 | Revised |
| 2 | 06/04/2013 | Revised |
| 3 | 06/04/2013 | Revised |
| 4 | 06/04/2013 | Revised |
| 5 | 06/04/2013 | Revised |



howard laks architects
1945 wealth street
santa monica, ca 90401
voice : 310-393-4465
fax : 310-393-2230

CONSULTANTS
Donald F. Dickerson, Architect
CONSULTING MECHANICAL & ELECTRICAL ENGINEERS
10000 WILSHIRE BOULEVARD, SUITE 404
SANTA MONICA, CA 90401
(310) 393-2230
E-MAIL: info@dfedesign.com JOB NO. 201225



710 WILSHIRE BOULEVARD
MIXED-USE HOTEL PROJECT
SANTA MONICA - CALIFORNIA 90401
PLUMBING DETAILS

| | |
|----------------|-------------------|
| DRAWN | -- |
| CHECKED | -- |
| APPROVED | -- |
| SCALE | AS NOTED |
| SHEET | P-501 |
| DATE | June 25, 2013 |
| PROJECT NUMBER | HLA 0000000-00000 |