

PI  
46H

TYPE 'IPS' VIBRATION ISOLATION SLEEVE

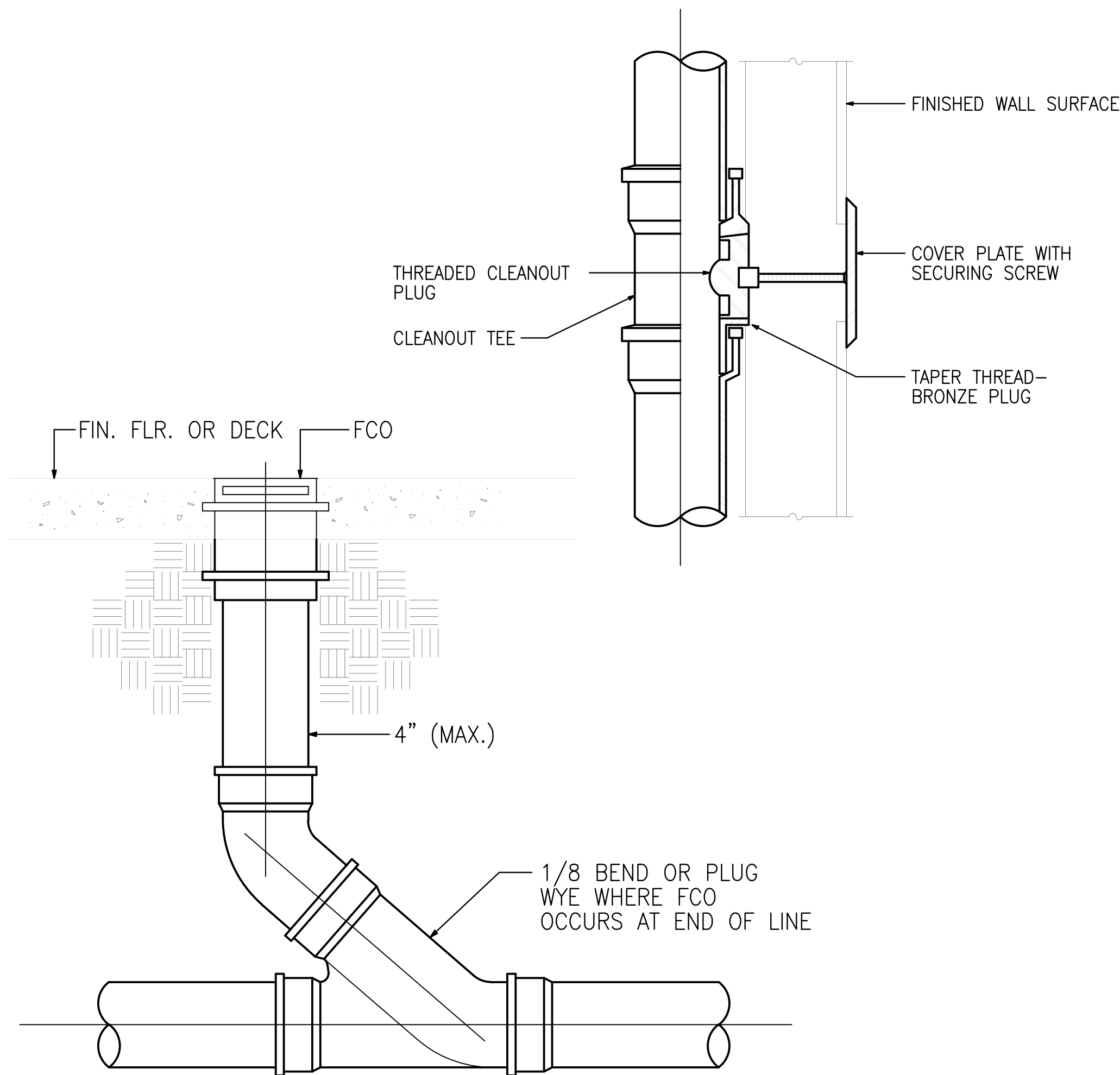
SCALE  
NONE

7

--

SCALE  
NONE

5



FLOOR CLEANOUT / WALL CLEANOUT

SCALE  
NONE

3

VIBRATION ISOLATION SCHEDULE

SCALE  
NONE

1

PLUMBING PIPING (APPLIES TO ALL PIPING OF TYPE INDICATED AND LOCATED DIRECTLY BELOW OR WITHIN TOWER, RETAIL AND GARAGE.)

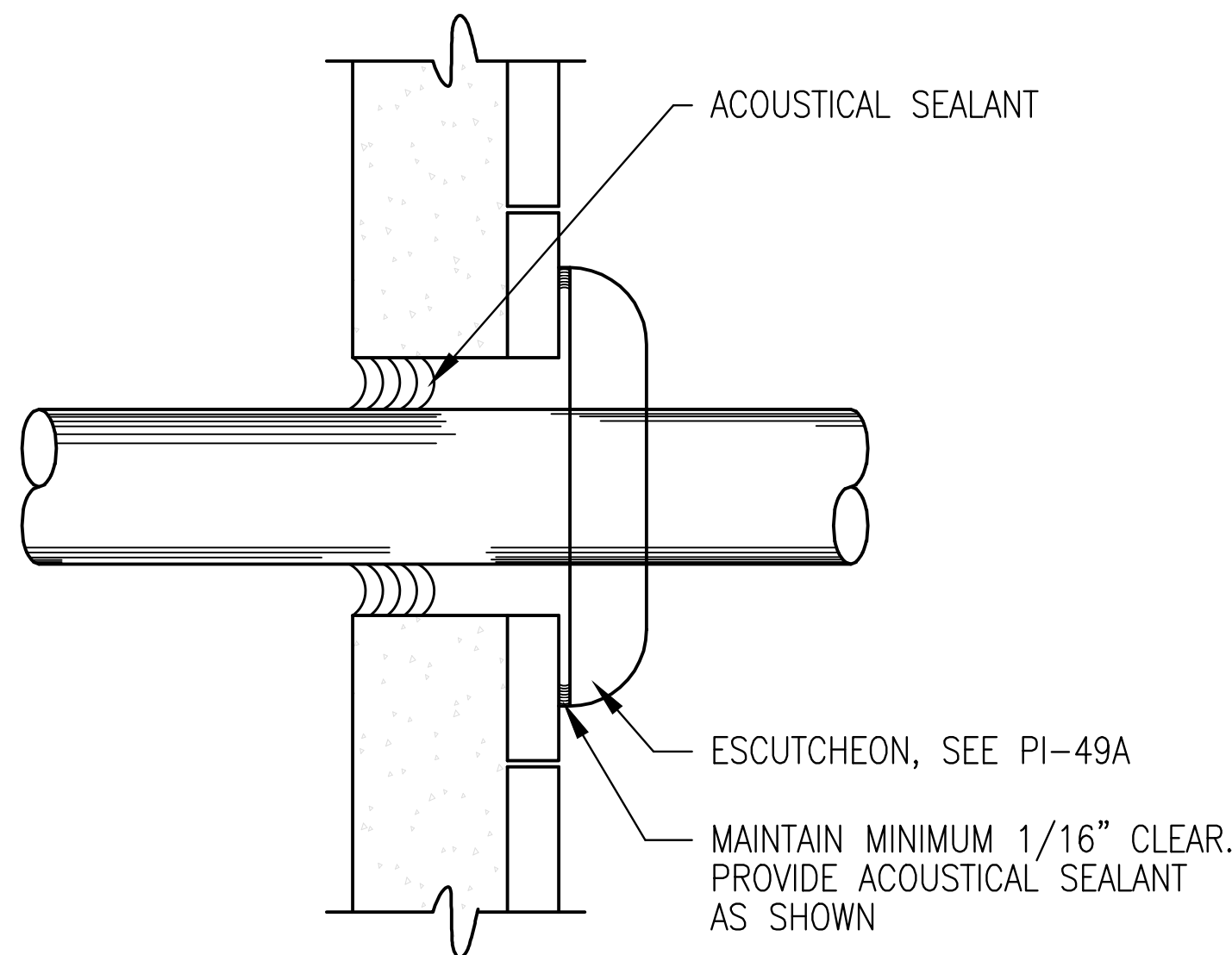
DESCRIPTION	DESIGN DEFL.	ISOLATOR		MTG. DETAIL	SEISMIC RESTRAINT NOTE 5	
		TYPE	DETAIL		TYPE	DETAIL
DOMESTIC COLD AND HOT WATER SUPPLY AND RETURN WATER PIPING						
1. SUSPENDED IN BOOSTER PUMP ROOM AND FROM GROUND LEVEL FLOOR SLAB TO VERTICAL RISER (APPLIES TO DOMESTIC COLD WATER PIPING ONLY)	0.3"	HN	PI-3	PI-9(g)	III	SE-3,-4, 5
2. SUSPENDED ABOVE TYPICAL CORRIDORS	0.3"	HN	PI-3	PI-9(g)	III	5
3. SUSPENDED DISTRIBUTION PIPING		IPC or	PI-41H	PI-79H	--	--
4. ATTACHMENT TO AND THROUGH STUDS, ETC.	--	IPS	PI-46H	PI-78H	--	--
5. ATTACHMENT FOR VERTICAL AND HORIZONTAL PIPING IN STUD CAVITY AND PARTITION PENETRATIONS AT FIXTURE	--	IPC	PI-41H	PI-80H	--	--
6. SUPPORT OF VERTICAL RISERS	--	IP	PI-1AH	PI-21H	--	--
7. PARTITION PENETRATIONS	--	--	--	PI-20A	--	--
8. PARTITION PENETRATIONS AT FIXTURES	--	ISL	PI-43	PI-52A	--	--
WASTE, VENT AND STORM DRAIN PIPING						
1. SUPPORT AND VERTICAL RISERS	--	IP	PI-1AH	PI-21H	--	--
2. SUSPENSION OF HORIZONTAL LINES	--	IL	PI-82H	PI-82H	--	--
3. MISCELLANEOUS ATTACHMENT WITHIN STUD CAVITY	--	IL	PI-82	--	--	--
4. PARTITION PENETRATIONS	--	--	--	PI-20	--	--

PLUMBING EQUIPMENT VIBRATION ISOLATION SCHEDULE

MARK	DESIGN DEFL.	ISOLATOR		FRAME DETAIL	MTG. DETAIL	SEISMIC RESTRAINT NOTE 5	
		TYPE	DETAIL			TYPE	DETAIL
DOMESTIC WATER PUMPS, WATER HEATERS, EXPANSION TANKS, PRV STATIONS	0.3"	HMN	PI-71	NOTE 4	--	NOTE 1	NOTE 1

NOTES:

- SEISMIC RESTRAINT IS BUILT INTO THE ISOLATOR.
- DETAIL TO BE PROVIDED TO INDICATE THAT CLEARANCE IS REQUIRED BETWEEN THE PIPE AND THE ROOF CONSTRUCTION IN ORDER TO AVOID A SHORT CIRCUIT OF THE VIBRATION. SEE OTHER DETAILS REGARDING ATTACHMENT AND WATERPROOFING REQUIREMENTS.
- CONTRACTOR TO PROVIDE SHOP DRAWING INDICATING ATTACHMENT METHOD BASED UPON PLUMBING ACOUSTICAL MOCKUP.
- CONTACT MANUFACTURER TO DETERMINE IF A FRAME IS REQUIRED OR IF ISOLATOR CAN BE DIRECTLY ATTACHED TO EQUIPMENT.
- IF REQUIRED BY BUILDING CODE OR CALCULATION.



NOTES:

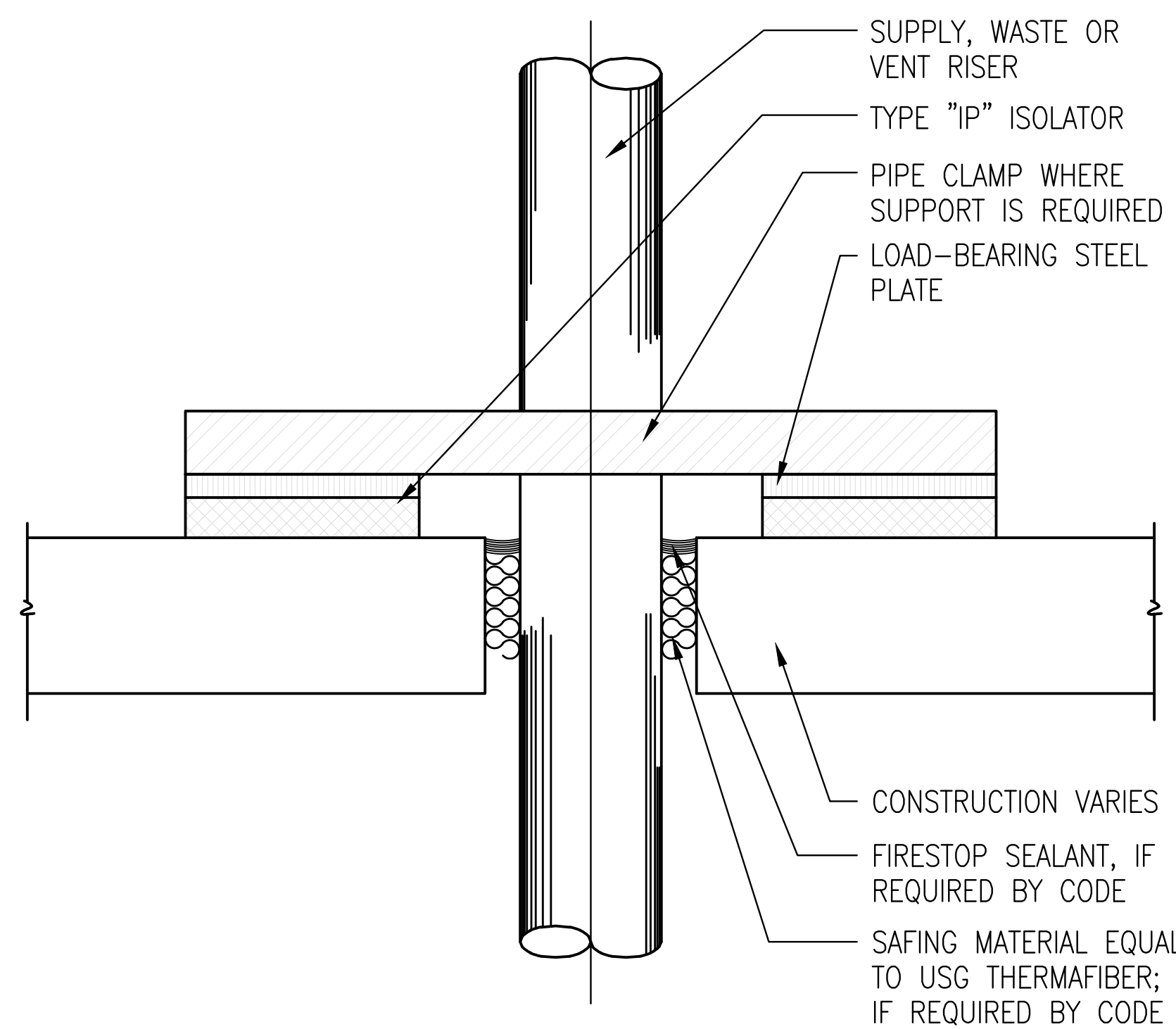
- SPACE BETWEEN PIPE AND SLEEVE SHALL BE FREE OF ANY FOREIGN MATERIALS.
- PIPE SHALL NOT CONTACT STRUCTURE AT ANY TIME. WEDGES SHALL NOT BE USED TO MAINTAIN PIPE IN POSITION.
- PIPE MUST BE APPROXIMATELY CENTERED IN OPENING. PROVIDE ADDITIONAL CLEARANCE FOR POSITIONAL CHANGE OF PIPE DUE TO LOADING OF PIPE OR OPERATION OF SYSTEM.

PI  
52A

ISOLATED PIPE PENETRATION

SCALE  
NONE

6



NOTES:

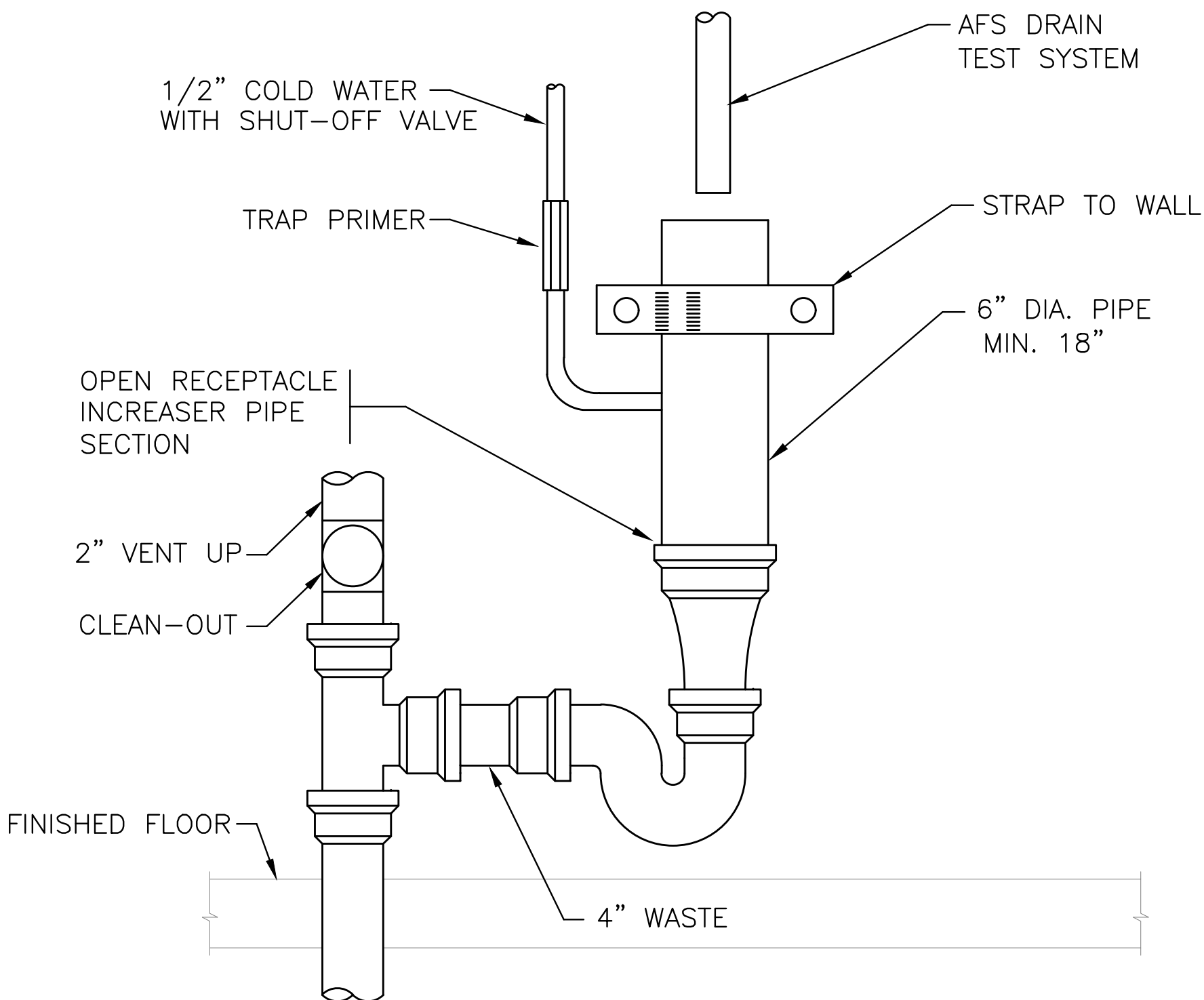
- NO CONTACT BETWEEN PIPE CLAMP AND STUDS OR GYPSUM BOARD.

PI  
21H

VIBRATION ISOLATION OF PLUMBING RISERS

SCALE  
NONE

4



STANDPIPE DRAIN HD-1

SCALE  
NONE

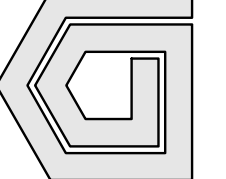
2

DESIGN	DATE	DESCRIPTION
PI	05/07/2013	Medium 02
	09/04/2013	Medium 03
	10/20/2013	Medium 04
	05/27/2016	Medium 05



howard laks architects  
1945 health street  
santa monica, ca 90401  
voice : 310-393-4465  
fax : 310-393-2230

CONSULTANTS  
Donald F. Dickerson Associates  
CONSULTING MECHANICAL & ELECTRICAL ENGINEERS  
1400 WILSHIRE BOULEVARD, SUITE 404  
SANTA MONICA, CA 90401  
(310) 393-2230  
E-MAIL: DONALD@DFDA.COM



710 WILSHIRE BOULEVARD  
MIXED-USE HOTEL PROJECT  
SANTA MONICA - CALIFORNIA 90401  
PLUMBING DETAILS

DRAWN  
CHECKED  
APPROVED  
SCALE  
SHEET  
AS NOTED

P-502

DATE June 25, 2013  
PROJECT NUMBER HLA 0000000-00000