

NOTES:

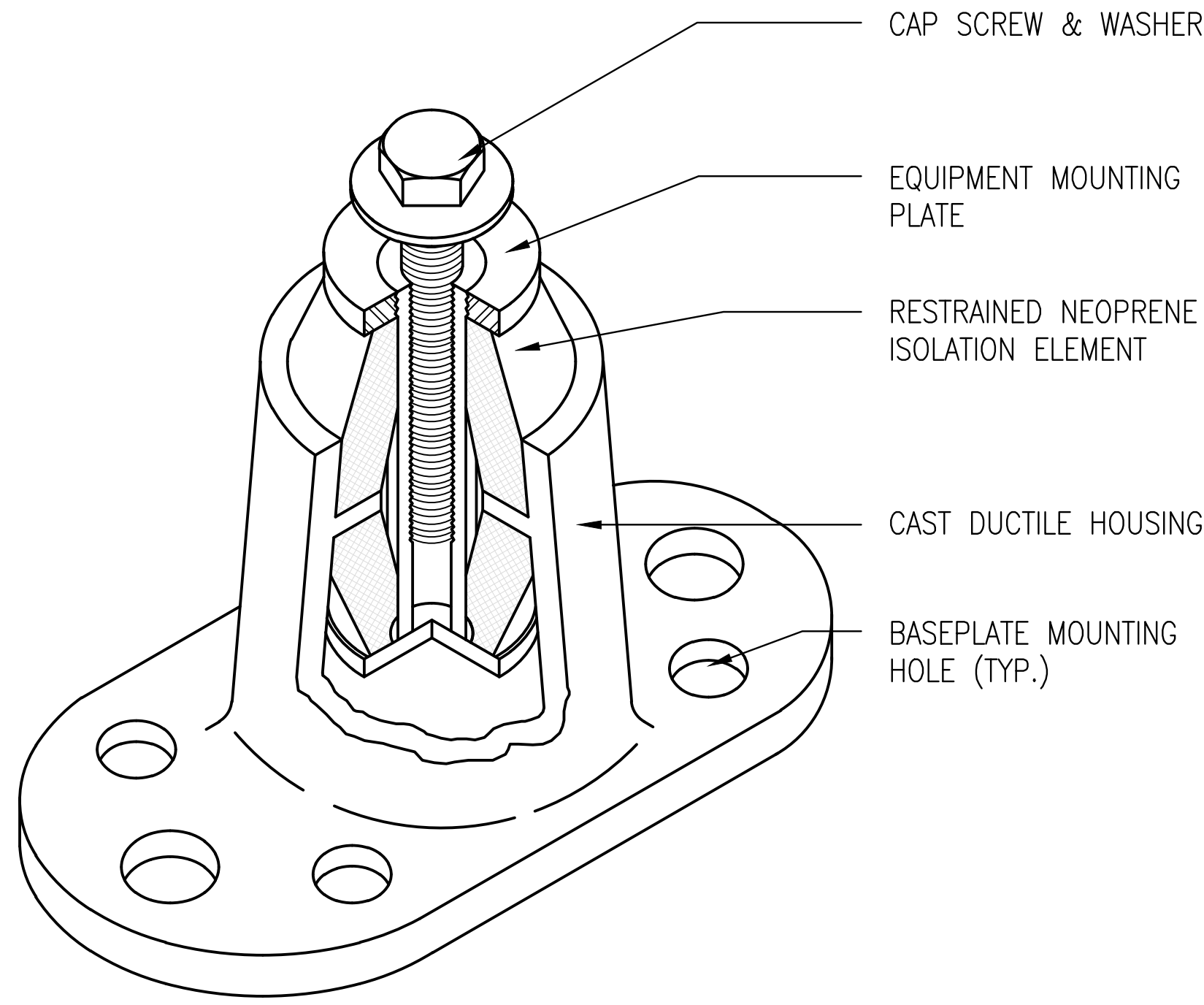
1. CABLE, ANCHORS, HANGER SPACING ETC. TO BE DESIGNED BY A STRUCTURAL ENGINEER LICENSED IN THE STATE WHICH THE WORK IS TO TAKE PLACE.
2. HANGER LOADS & LOCATIONS TO BE SUBMITTED FOR REVIEW BY STRUCTURAL ENGINEER PRIOR TO CONSTRUCTION.
3. LOCATE VIBRATION ISOLATION HANGER DIRECTLY ABOVE SEISMIC RESTRAINT AS INDICATED.
4. MUST BE MODIFIED WITH UPPER TRAVEL LIMIT STOP. SEE DETAIL SE-4

SE
3

LATERAL RESTRAINT DETAIL-PIPING

SCALE
NONE

5

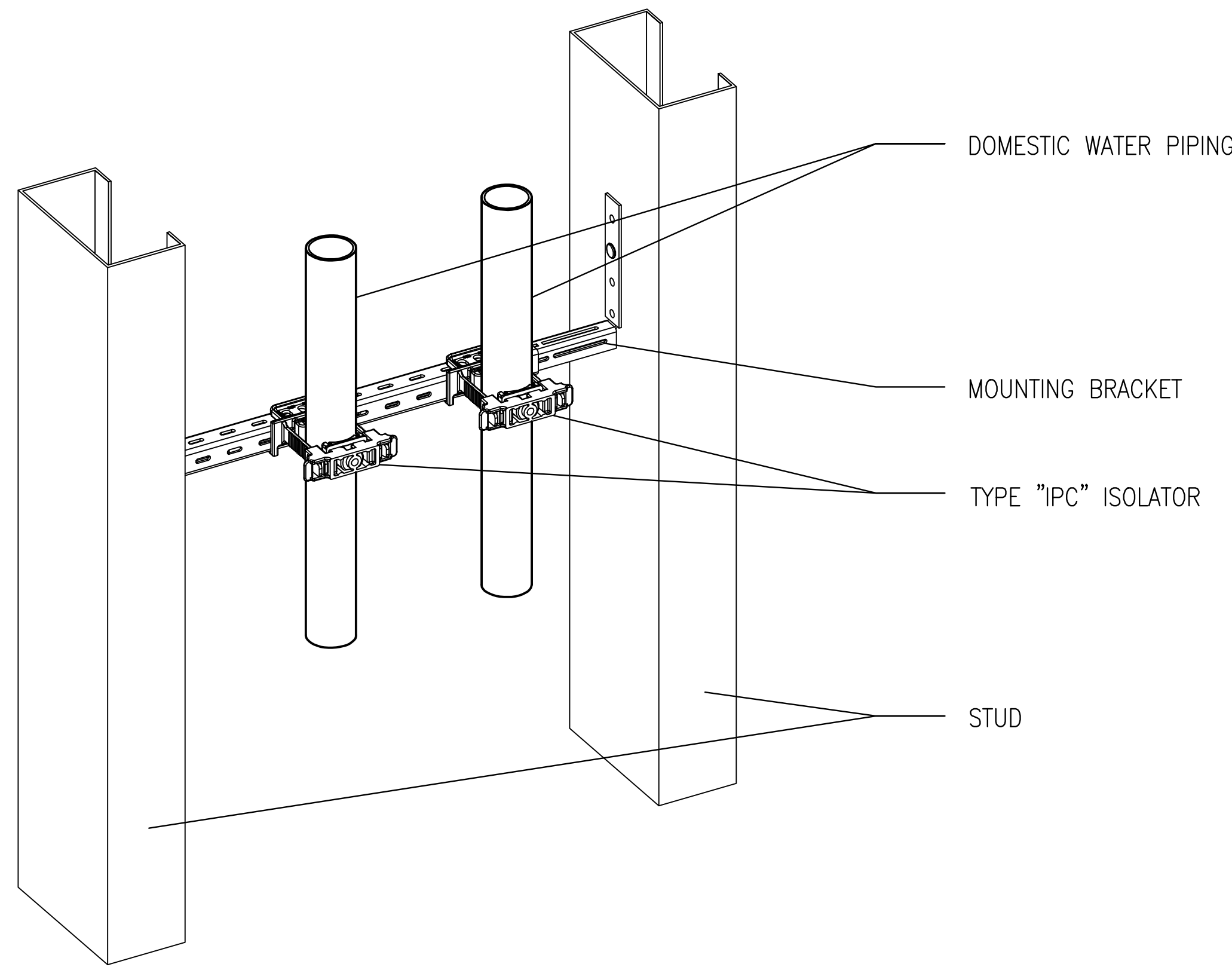


PI
71

TYPE HMN VIBRATION ISOLATOR

SCALE
NONE

3

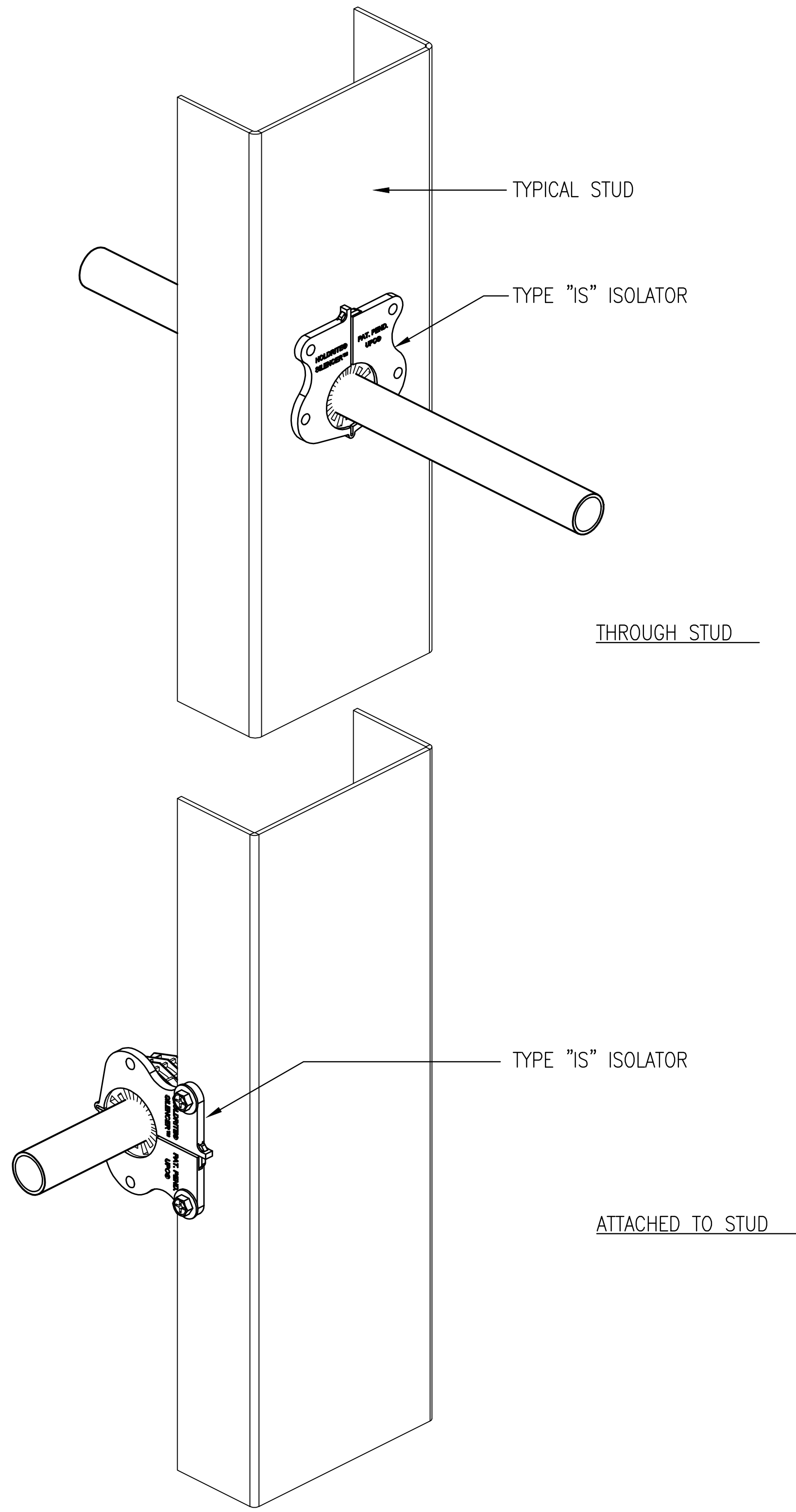


PI
80H

WATERPROOF PENETRATION DETAIL

SCALE
NONE

2

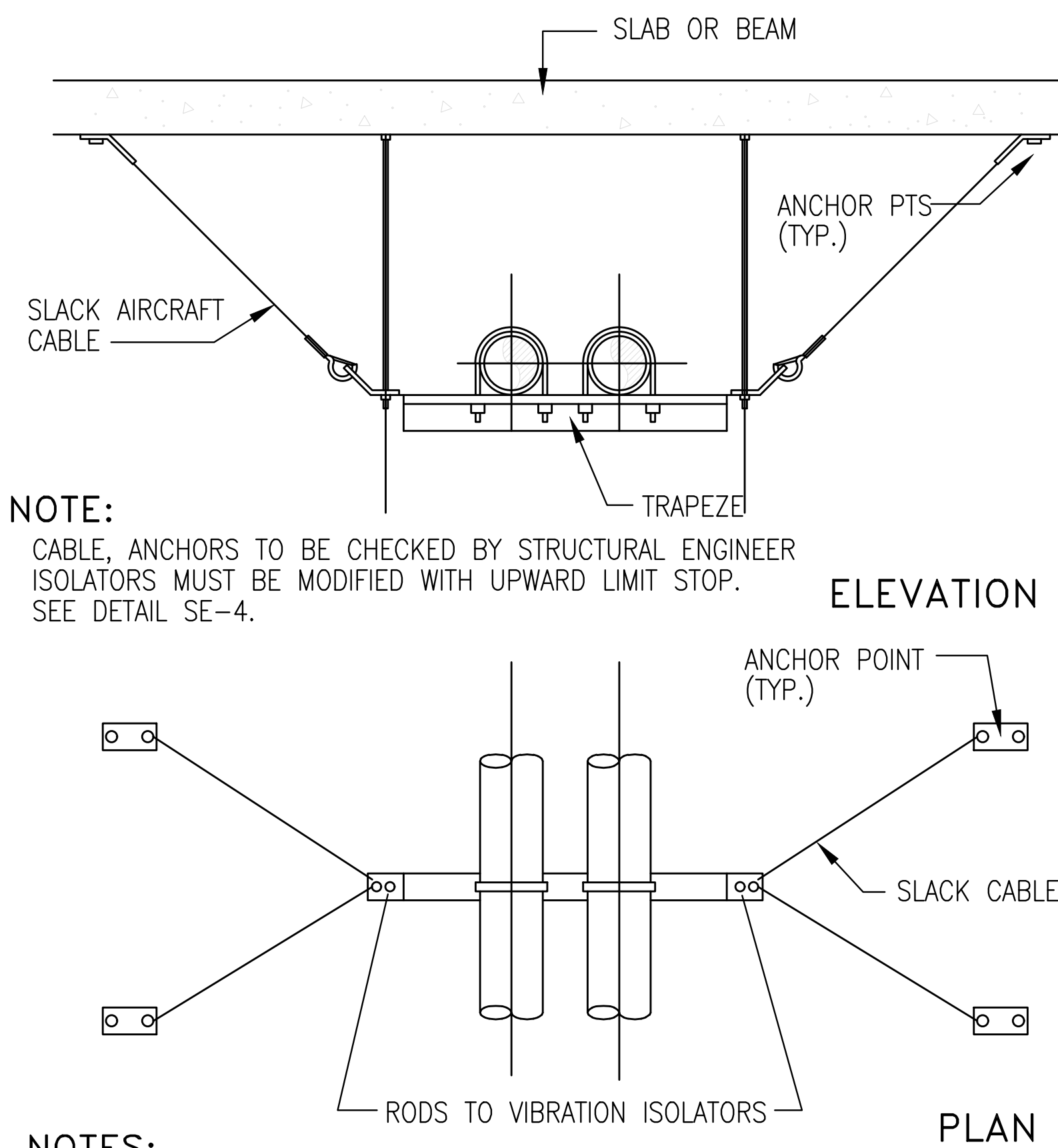


PI
78H

ISOLATED PIPE PENETRATION

SCALE
NONE

1



NOTE:

CABLE, ANCHORS TO BE CHECKED BY STRUCTURAL ENGINEER. ISOLATORS MUST BE MODIFIED WITH UPWARD LIMIT STOP. SEE DETAIL SE-4.

NOTES:

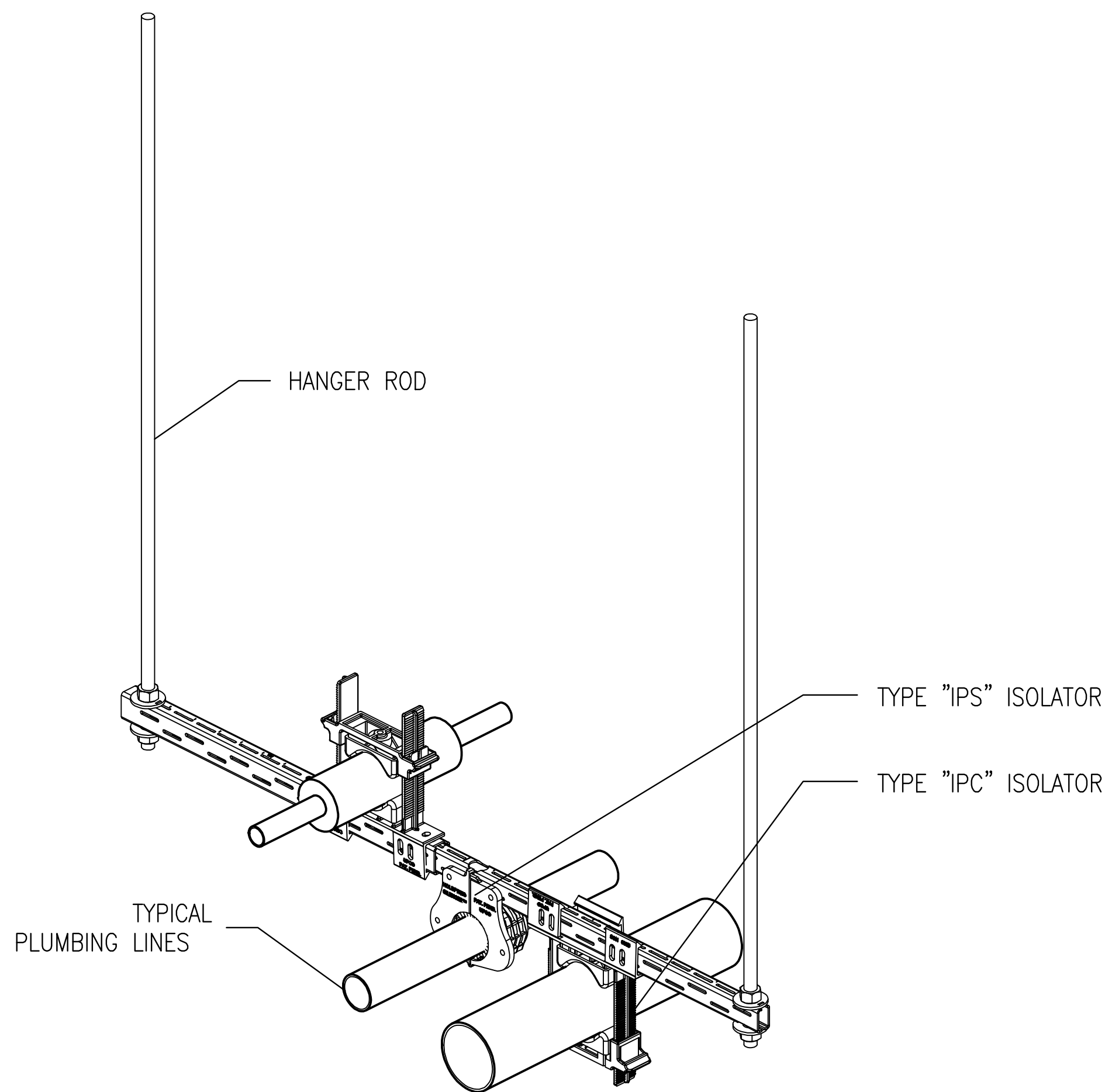
1. CABLE, ANCHORS, ETC. TO BE CHECKED BY STRUCTURAL ENGINEER.
2. MAXIMUM SPACING INTERVAL TO BE DETERMINED BY STRUCTURAL ENGINEER.
3. LOCATE VIBRATION ISOLATION HANGER DIRECTLY ABOVE SEISMIC RESTRAINT AS INDICATED.
4. ISOLATORS MUST BE MODIFIED WITH UPPER TRAVEL LIMIT STOP. SEE DETAIL SE-4

SE
5

ALL-DIRECTIONAL RESTRAINT DETAIL- PIPE TRAPEZE

SCALE
NONE

6

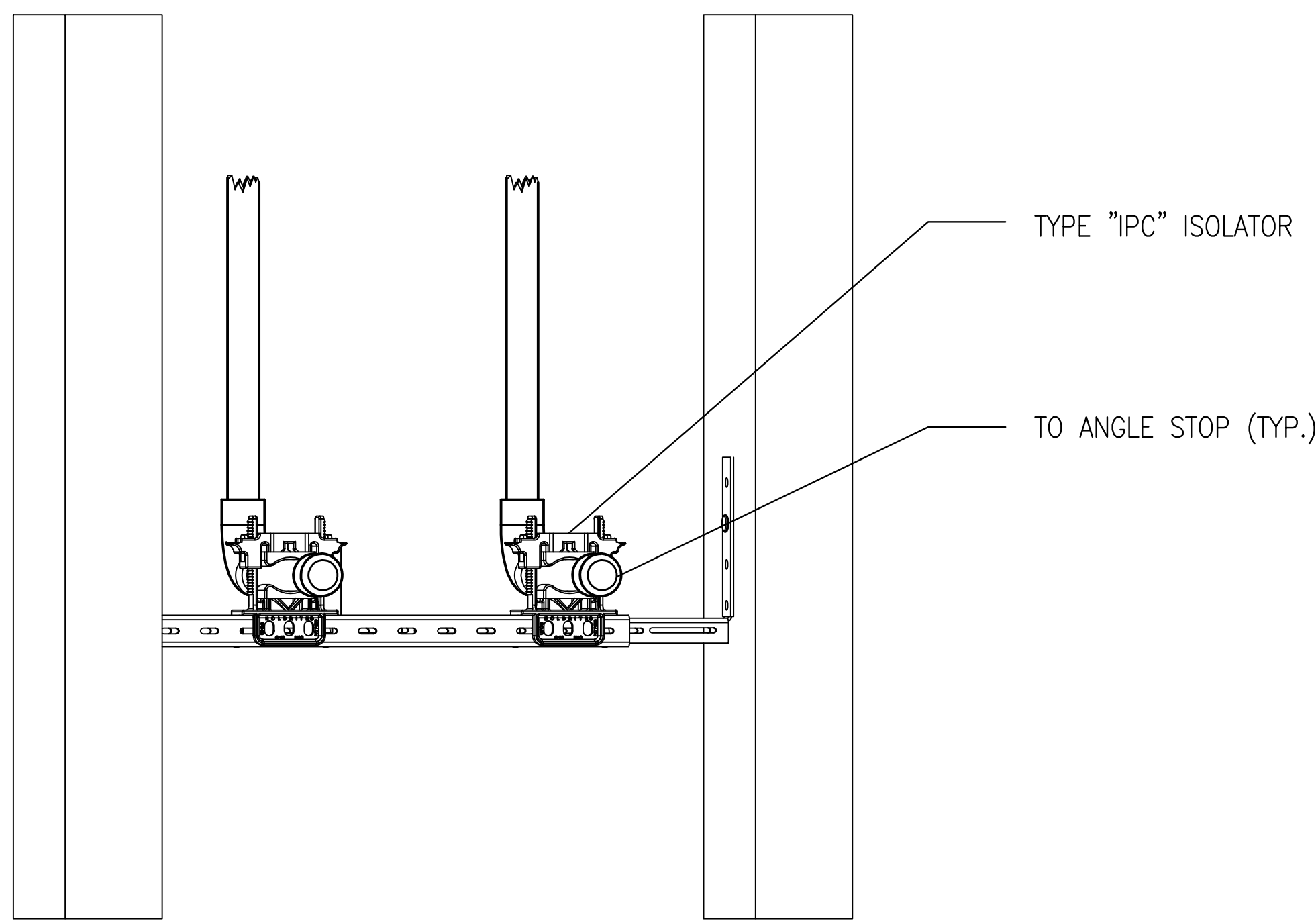


PI
79H

TYP. OVERHEAD TRAPEZE PIPING VIBRATION ISOLATION

SCALE
NONE

4

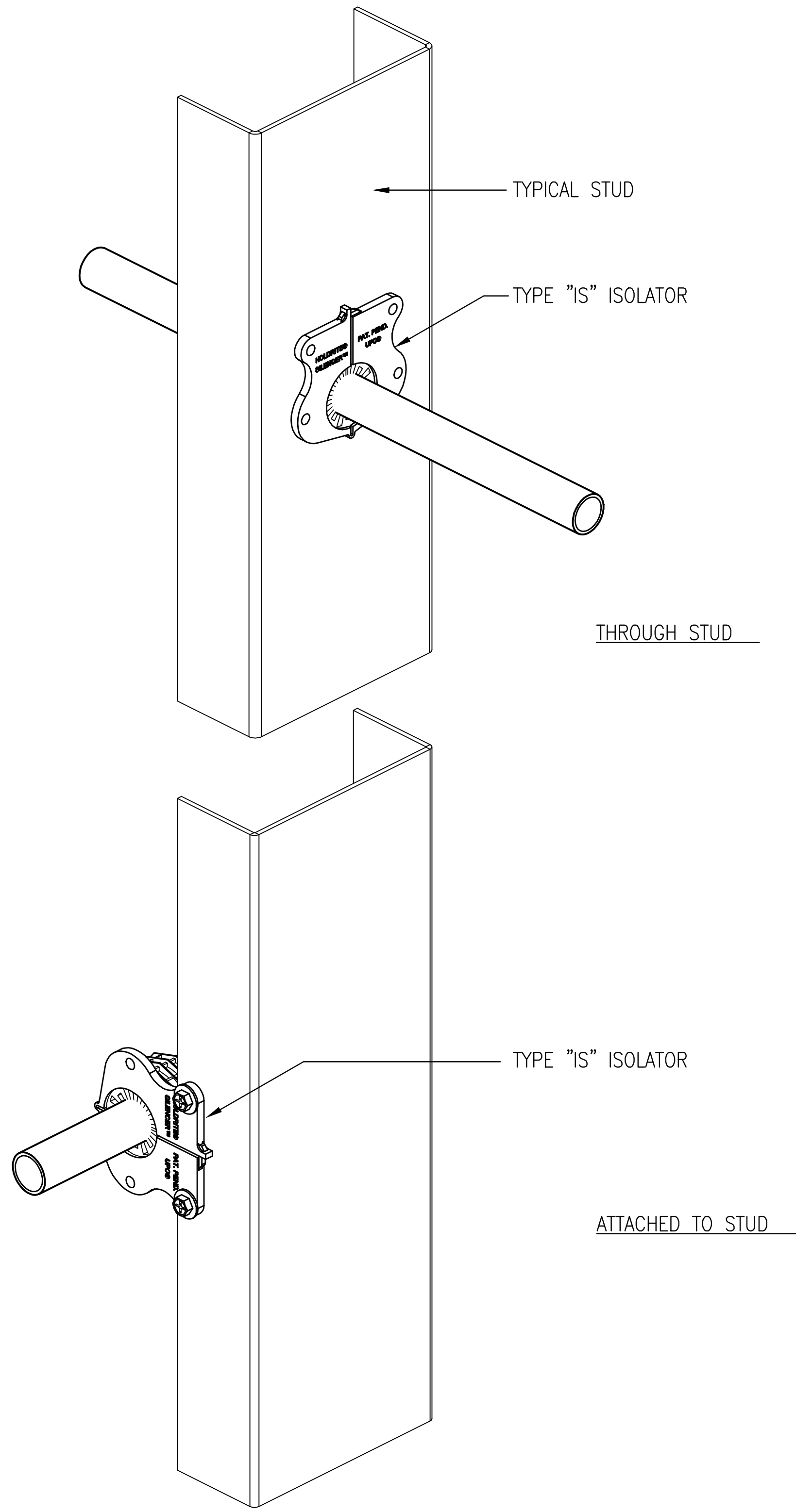


PI
80H

WATERPROOF PENETRATION DETAIL

SCALE
NONE

2



PI
78H

ISOLATED PIPE PENETRATION

SCALE
NONE

1