

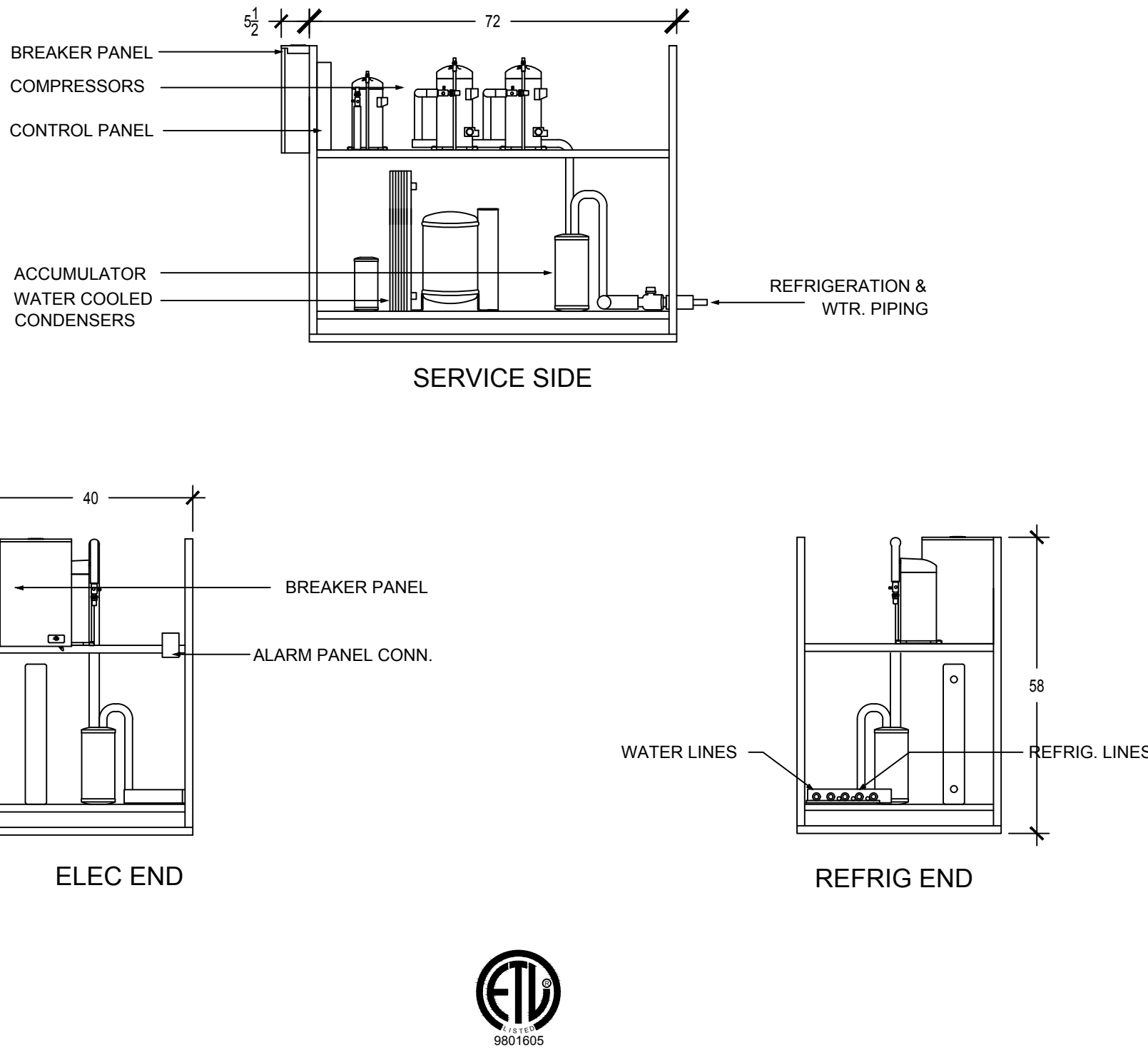
710 WILSHIRE, LOS ANGELES

FIXTURE			CONDENSING UNIT										EVAPORATOR													
SYSTEM	ITEM	DESCRIPTION	FIX TEMP	SUC TEMP	H.P.	CAP @ 90 F.	MODEL #	REF	VOLT	PH	RLA	FUSE	MODEL	QTY	VLT	AMPS	DEF	HEATER		LINE SZ		TIME		REMARKS		
																		VLT	AMPS	SUCT	LIQ	CLOCK				
AA1	1-91	BACK BAR REF.	35										BY OTHERS											E.S.T		
AA2	1-94	BACK BAR REF.	35										BY OTHERS											E.S.T		
AA3	1-110	BACK BAR REF.	35										BY OTHERS											E.S.T		
AA4	1-110	BACK BAR REF.	35										BY OTHERS											E.S.T		
AA5	1-153	BACK BAR REF.	35										BY OTHERS											E.S.T		
AA6	1-153	BACK BAR REF.	35										BY OTHERS											E.S.T		
AA7	1-164	WALK-IN COOLER	35										KLP209W											E.S.T		
AA8	20	WALK-IN COOLER	35										KLP317M	1	115	4.2	O.C.							E.S.T		
A-1	1-168	SINPLEX COMPRESSOR	35	20	3 1/2	33,000	ZS20K4E	R404	208	3	13.6	20		1	115	6.3	O.C.				1 1/8	1/2				
A-2		SINPLEX COMPRESSOR	35	20	3 1/2	33,000	ZS20K4E	R404	208	3	13.6	20		1	115	6.3	O.C.				1 1/8	1/2				
B		WALK-IN FREEZER	-10	-20	2	7,000	ZS15K4E	R404	208	3	9.3	15***15		1	230	2.2	ELEC	230	10.3	7/8	3/8	8145-20		E.S.T		
MODEL #: RCE2-2N0							VOLTS/PH: 208-230/3							RACK SIZE: 72" x 40" x 58" HIGH							WATER TEMP: 90.00					
DESCRIPTION: SINPLEX							AMPACITY: 42.10							WEIGHT: 1,380 LBS							WATER SUPPLY: TOWER					
LOCATION: MECH ROOM							DISCONNECT: 50.00							PAD SIZE: N/A							TOTAL G.P.M.: 14.60					
COOLING: WATER COOLED							DESCRIPTION: BREAKER PANEL							PIPING: RIGHT END							PRESSURE DROP: 19.10					
PAINTED: YES							LOCATION: LEFT END							CFM VENT: 1049 @ 90 D.F.							SUPPLY AND RETURN SIZE: 1"					

E = THERMAL EXPANSION VALVE, S = SOLENOID VALVE, T = THERMOSTAT, SW = SWITCH, OC = OFF CYCLE, E = ELECTRIC, SC = SELF CONTAIN

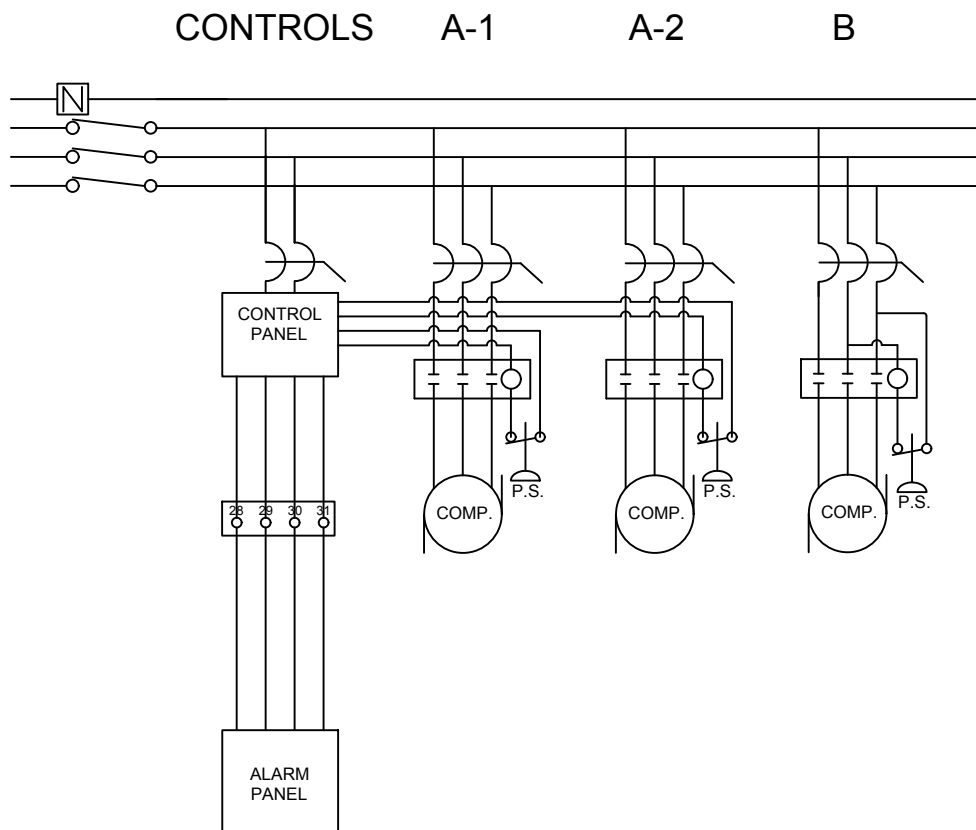
**SEE ELECTRICAL LOW TEMP EVAPORATOR DIAGRAM BELOW

SYSTEM CONFIGURATION

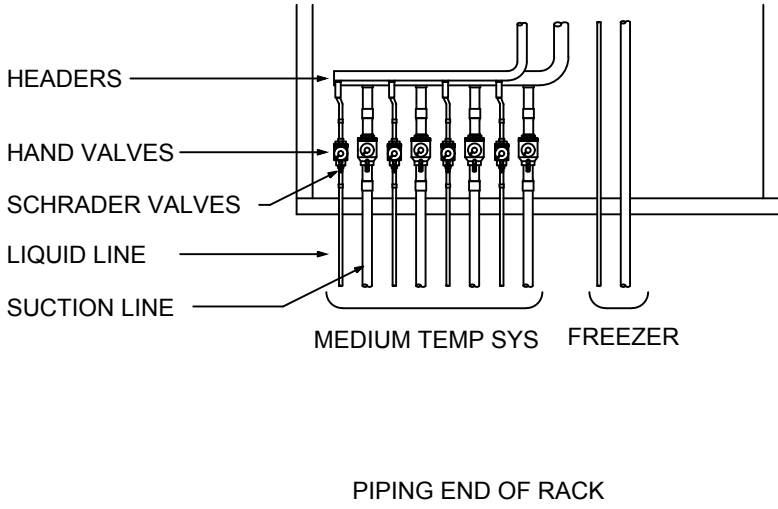


NOTE:
MAINTAIN 3' CLEAR ON ALL SIDES OF REFRIGERATION RACK

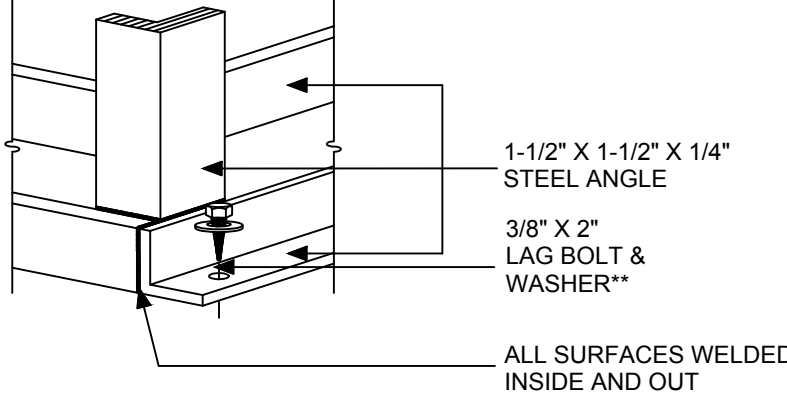
WIRING SCHEMATIC



LINE SEQUENCE

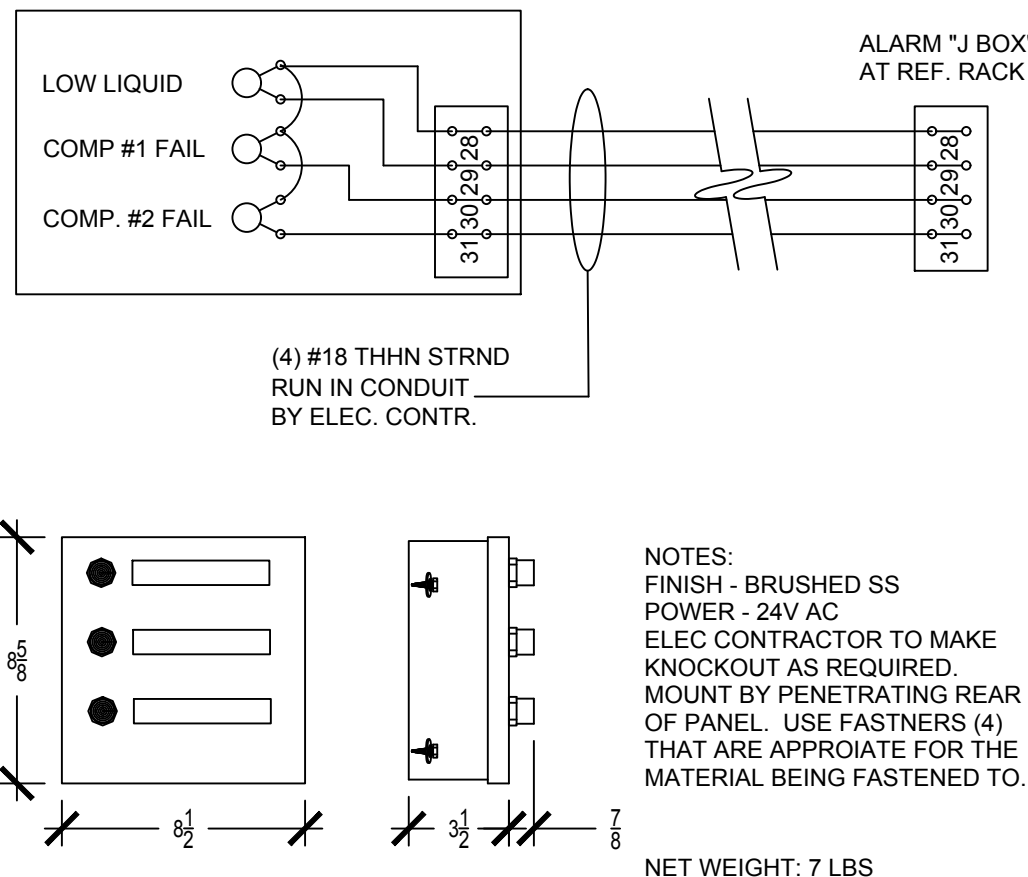


SEISMIC RESTRAINT

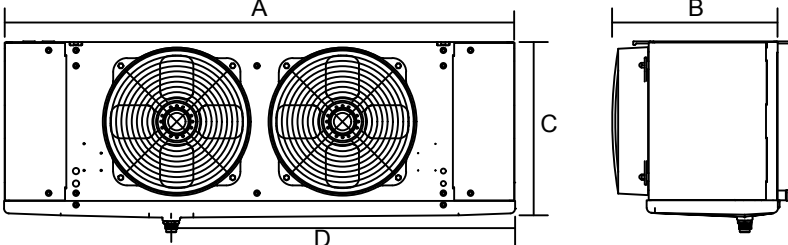


**FOR CONCRETE, SUBSTITUTE HILTI 3/8" x 2" DROP IN ANCHOR
TYPICAL 3 PLACES AT EACH END OF RACK

ALARM PANEL



EVAPORATOR DATA



UNIT	LENGTH	WIDTH	HEIGHT	DRAIN
AA7	46.3	13.4	16.0	27
AA8	62.3	13.4	16.0	31
B	46.3	13.4	16.0	27

REFRIGERATION NOTES

1. GENERAL CONTRACTOR

GENERAL CONTRACTOR SHALL VERIFY AND COORDINATE EXACT LOCATION OF COMPRESSOR RACK(S) WITH ARCHITECT AND SHALL PROVIDE ACCESS FOR DELIVERY AND INSTALLATION OF EACH COMPRESSOR RACK

GENERAL CONTRACTOR SHALL PROVIDE ALL FLOOR OR ROOF PENETRATIONS, RACEWAYS OR SLEEVES THROUGH WALLS AND CONDUIT RUNS AS REQUIRED FROM REMOTE COMPRESSOR RACK LOCATIONS TO REFRIGERATED ITEMS AS REQUIRED BY LOCAL CODES, JOB CONDITIONS, AS INDICATED ON PLANS. CONDUIT RUNS SHALL BE RIGID WITH MINIMUM 24" RADIUS BENDS. PULL BOXES SHALL BE REQUIRED EACH 48" OF CONDUIT RUN WITH NO MORE THAN TWO ELLS ALLOWED BETWEEN PULL BOXES. NO FACTORY ELLS PERMITTED. SIZE OF CONDUIT AND/OR RACEWAYS SHALL BE VERIFIED WITH REFRIGERATION CONTRACTOR.

INSTALLATION CLEARANCE OF 3'-0" REQUIRED ON ALL SIDES OF COMPRESSOR RACK. CONSULT FACTORY IF PROPER CLEARANCE CANNOT BE PROVIDED.

GENERAL CONTRACTOR SHALL PROVIDE LEVEL ROOF OR MECHANICAL ROOM PAD AS NOTED BELOW. SIZE AS INDICATED ON DATA SHEET. ROOF PAD SHALL BE COVERED WITH A WATERTIGHT METAL COVER. PITCH POCKET TO BE LOCATED AS INDICATED ON DRAWING AND BACK FILLED WITH HOT PITCH BY G.C. AFTER COMPLETION OF SERVICES.

2. ELECTRICAL CONTRACTOR

ELECTRICAL CONTRACTOR SHALL PROVIDE AND CONNECT POWER CIRCUITS TO EACH COMPRESSOR RACK AND/OR CONDENSING UNIT AS INDICATED ON PLAN. REFER TO DATA SHEET FOR ELECTRICAL CHARACTERISTICS.

ELECTRICAL CONTRACTOR SHALL PROVIDE AND INSTALL POWER TO ALL EVAPORATORS AND SHALL PROVIDE AND INSTALL COLOR-CODED DEFROST CIRCUITS AS REQUIRED FROM RACK TIME CLOCK(S) TO FREEZER EVAPORATOR.

ELECTRICAL CONTRACTOR SHALL PROVIDE POWER AND CONNECT ALL DRAIN LINE HEATERS IN ALL FREEZER COMPARTMENTS. HEATER PROVIDED BY REFRIGERATION CONTRACTOR.

ELECTRICAL CONTRACTOR SHALL PROVIDE WIRING AND CONNECTIONS FOR THERMOSTATS AND SOLENOID VALVES AS REQUIRED.

ALL WIRING AND INSTALLATION SHALL BE IN ACCORDANCE TO DIAGRAMS, THE NATIONAL ELECTRIC CODE AND LOCAL CODES.

3. PLUMBING CONTRACTOR

PLUMBING CONTRACTOR SHALL PROVIDE AND INSTALL ACR TYPE "L" HARD COPPER DRAIN LINES WITH P-TRAPS FROM EACH WALK-IN EVAPORATOR. P-TRAP SHALL BE PIPED AND MOUNTED OUTSIDE OF FIXTURE.

FOR BASE DRAINS, PLUMBER TO PROVIDE DRAIN LINE WITH SOFT SOLDER OR BRASS COMPRESSION FITTINGS.

ALL PIPING TO BE COMPLETED IN ACCORDANCE WITH NATIONAL AND LOCAL CODES.

4. COMPRESSOR RACK PACKAGE

AIR OR WATER COOLED COMPRESSORS, CONDENSERS AND/OR CONDENSING UNITS SHALL BE PREPARED AND FACTORY ASSEMBLED. COMPLETE WITH PRESSURE CONTROLS, LIQUID LINE DRIERS, SIGHT GLASSES, SUCTION LINE FILTERS, SUCTION ACCUMULATORS, CRANKCASE PRESSURE REGULATORS, HEAD PRESSURE CONTROLS, CRANKCASE AND FORCED AIR HEATERS AS REQUIRED.

ALL REFRIGERATION LINES SHALL BE EXTENDED TO OUTSIDE OF PACKAGE AS INDICATED ON DATA SHEET. TUBING SHALL BE SECURELY SUPPORTED AND ANCHORED WITH CLAMPING. ENDS OF ALL LINES SHALL BE CAPPED AGAINST CONTAMINATION AFTER EACH UNIT IS COMPLETED. CAPPED ENDS ARE TO BE OPENED AT TIME OF FINAL CONNECTION.

COMPRESSOR RACK(S) SHALL HAVE ELECTRICAL CHARACTERISTICS AS INDICATED ON DATA SHEET. ELECTRICIAN TO MAKE CONNECTIONS AS REQUIRED.

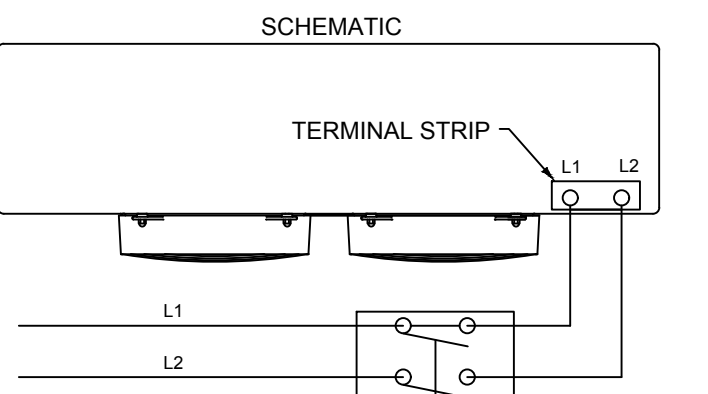
5. REFRIGERATION CONTRACTOR

REFRIGERATION CONTRACTOR TO PROVIDE ALL REFRIGERANT PIPING. PIPING SHALL CONFORM TO ASTM STANDARD SPECIFICATIONS FOR COPPER REFRIGERANT TUBING SERIAL DESIGNATION B-88. ALL PIPING SHALL BE TYPE "L". REFRIGERATION CONTRACTOR SHALL BE RESPONSIBLE FOR PROPERLY SIZING LIQUID, SUCTION AND RISER LINES FOR EACH SYSTEM. SUCTION LINES TO BE SIZED TO GIVE MAXIMUM PRESSURE DROP FROM EVAPORATOR TO FIXTURE OF 24" FOR HIGH AND MEDIUM TEMPERATURE SYSTEMS AND 10" DROP FOR LOW TEMPERATURE SYSTEMS. ALL REFRIGERANT LINES NOT RUN IN PVC OR EMT SHALL BE INSULATED WITH MINIMUM 1/2" THICK WALL ARMSTRONG ARMAFLEX INSULATION OR APPROVED EQUAL, MEETING SPECIFICATION AND LOCAL AND STATE CODES.

LOW TEMP EVAPORATOR

ITEM 1-168

ELECTRICAL CONTRACTOR TO SUPPLY AND INSTALL 208-230/1 PHASE SERVICE CONNECT SAS SHOWN BELOW



REVISIONS

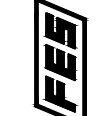
DATE: BY: NOTES:

DATE: BY: NOTES:

DATE: BY: NOTES:

FRIGID ENGINEERING SERVICES

19145 PARTHENA STREET, SUITE G
NORTHBRIDGE, CA 91324
PHONE 818/946-2808 FAX 818/772-2008
email: info@fes.com



710 WILSHIRE BLVD
LOS ANGELES, CA

DATE

12/18/12

DRAWN

T. COYLE

SHEET

R-1

OF 1 SHEETS

REVISION	DATE	DESCRIPTION
1	05/07/2013	Medium 02
2	09/04/2013	Medium 03
3	10/20/2013	Medium 04
4	06/27/2016	Medium 05



howard laks architects

1545 health street
santa monica, ca 90401

CONSULTANTS

Kitchen Professionals

18742 Colwood Street, Suite 103
Huntington Beach, Ca 92647
Phone: 714.841.0531 Fax: 714.441.9986

710 WILSHIRE BOULEVARD
MIXED-USE HOTEL PROJECT
SANTA MONICA - CALIFORNIA, 90401

MAIN KITCHEN & GROUND FLOOR REFRIGERATION DATA

DRAWN

JL

CHECKED

CH

APPROVED

-

SCALE

N/A

SHEET

K-0.5.2

DATE

June 25, 2013

PROJECT NUMBER

HJA_0000000-00000