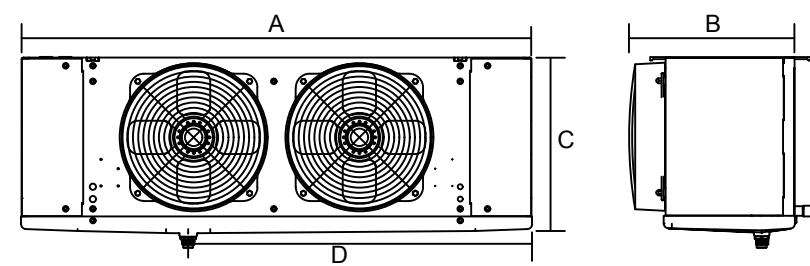


EQUIPMENT SCHEDULE																							
710 WILSHIRE																							
FIXTURE			COMPRESSOR										EVAPORATOR										
SYSTEM	ITEM#	DESCRIPTION	FIX TEMP	SUC TEMP	7HP WATTS	BTU AT 90°F	MODEL NO.	REF	VOLT	PH	RLA	FUSE	MODEL NO.	QTY	FAN		DEF.	HEATER		LINE SIZES		TIME CLOCK	REMARKS
															VOLT	AMPS		VOLT	AMPS	SUC.	LIQ		
A	2	WALK-IN COOLER	35	25	34	7,640	IMEF-0090	R404	230	1	9.9	15	LC4072	1	115	2.0	0.0			5/8	5/8		
MODEL # [A1]-110						VOLTS/PH 208-230V						RACK SIZE 11A" x 11A" x 11A" HIGH						WATER TEMP N/A					
DESCRIPTION INDV. CONDENSING UNIT						CAPACITY 12.4 AMPS						WEIGHT 110 LBS						WATER SUPPLY N/A					
LOCATION OUTDOOR						DISCONNECT 15 AMP MAIN						PAD SIZE 36" x 48"						TOTAL OPH N/A					
COOLING [AIR COOLED]						DESCRIPTION INDV. DISCONNECT SWITCH						PIPING REAR						PRESSURE DROP N/A					
PAINTED YES						LOCATION LEFT END						CFM VENT N/A						WATER PIPE SIZE N/A					
E = THERMAL EXPANSION VALVE, S = SOLENOID, T = THERMOSTAT, SW = SWITCH, OC = OFF CYCLE, H = ELECTRIC HEATER, SC = SELF CONTAINED																							

EVAPORATOR DIMENSIONS



SYSTEM	A	B	C	D
A	45.5	14.9	14.9	0

REFRIGERATION NOTES

1. GENERAL CONTRACTOR

GENERAL CONTRACTOR SHALL VERIFY AND COORDINATE EXACT LOCATION OF COMPRESSOR RACK(S) WITH ARCHITECT AND SHALL PROVIDE ACCESS FOR DELIVERY AND INSTALLATION OF EACH COMPRESSOR RACK

GENERAL CONTRACTOR SHALL PROVIDE ALL FLOOR OR ROOF PENETRATIONS, RACEWAYS OR SLEEVES THROUGH WALLS AND CONDUIT RUNS AS REQUIRED FROM REMOTE COMPRESSOR RACK LOCATIONS TO REFRIGERATED ITEMS AS REQUIRED BY LOCAL CODES. JOB CONDITIONS, AS INDICATED ON PLANS. CONDUIT RUNS SHALL BE RIGID WITH MINIMUM 24" RADIUS BENDS. PULL BOXES SHALL BE REQUIRED EACH 48" OF CONDUIT RUN WITH NO MORE THAN TWO ELLS ALLOWED BETWEEN PULL BOXES. NO FACTORY ELLS PERMITTED. SIZE OF CONDUIT AND/OR RACEWAYS SHALL BE VERIFIED WITH REFRIGERATION CONTRACTOR.

INSTALLATION CLEARANCE OF 3'-0" REQUIRED ON ALL SIDES OF COMPRESSOR RACK. CONSULT FACTORY IF PROPER CLEARANCE CANNOT BE PROVIDED.

GENERAL CONTRACTOR SHALL PROVIDE LEVEL ROOF OR MECHANICAL ROOM PAD AS NOTED BELOW. SIZE AS INDICATED ON DATA SHEET. ROOF PAD SHALL BE COVERED WITH A WATERTIGHT METAL COVER. PITCH POCKET TO BE LOCATED AS INDICATED ON DRAWING AND BACK FILLED WITH HOT PITCH BY G.C. AFTER COMPLETION OF SERVICES.

2. ELECTRICAL CONTRACTOR

ELECTRICAL CONTRACTOR SHALL PROVIDE AND CONNECT POWER CIRCUITS TO EACH COMPRESSOR RACK AND/OR CONDENSING UNIT AS INDICATED ON PLAN. REFER TO DATA SHEET FOR ELECTRICAL CHARACTERISTICS.

ELECTRICAL CONTRACTOR SHALL PROVIDE AND INSTALL POWER TO ALL EVAPORATORS AND SHALL PROVIDE AND INSTALL COLOR-CODED DEFROST CIRCUITS AS REQUIRED FROM RACK TIME CLOCK(S) TO FREEZER EVAPORATOR.

ELECTRICAL CONTRACTOR SHALL PROVIDE POWER AND CONNECT ALL DRAIN LINE HEATERS IN ALL FREEZER COMPARTMENTS. HEATER PROVIDED BY REFRIGERATION CONTRACTOR.

ELECTRICAL CONTRACTOR SHALL PROVIDE WIRING AND CONNECTIONS FOR THERMOSTATS AND SOLENOID VALVES AS REQUIRED.

ALL WIRING AND INSTALLATION SHALL BE IN ACCORDANCE TO DIAGRAMS, THE NATIONAL ELECTRIC CODE AND LOCAL CODES.

3. PLUMBING CONTRACTOR

PLUMBING CONTRACTOR SHALL PROVIDE AND INSTALL ACR TYPE 1" HARD COPPER DRAIN LINES WITH P-TRAPS FROM EACH WALK-IN EVAPORATOR. P-TRAP SHALL BE PIPED AND MOUNTED OUTSIDE OF FIXTURE.

FOR BASE DRAINS, PLUMBER TO PROVIDE DRAIN LINE WITH SOFT SOLDER OR BRASS COMPRESSION FITTINGS.

ALL PIPING TO BE COMPLETED IN ACCORDANCE WITH NATIONAL AND LOCAL CODES.

4. COMPRESSOR RACK PACKAGE

AIR OR WATER COOLED COMPRESSORS, CONDENSERS AND/OR CONDENSING UNITS SHALL BE PREPARED AND FACTORY ASSEMBLED, COMPLETE WITH PRESSURE CONTROLS, LIQUID LINE DRIERS, SIGHT GLASSES, SUCTION LINE FILTERS, SUCTION ACCUMULATORS, CRANKCASE PRESSURE REGULATORS, HEAD PRESSURE CONTROLS, CRANKCASE AND FORCED AIR HEATERS AS REQUIRED.

ALL REFRIGERATION LINES SHALL BE EXTENDED TO OUTSIDE OF PACKAGE AS INDICATED ON DATA SHEET. TUBING SHALL BE SECURELY SUPPORTED AND ANCHORED WITH CLAMPING. ENDS OF ALL LINES SHALL BE CAPPED AGAINST CONTAMINATION AFTER EACH UNIT IS COMPLETED. CAPPED ENDS ARE TO BE OPENED AT TIME OF FINAL CONNECTION.

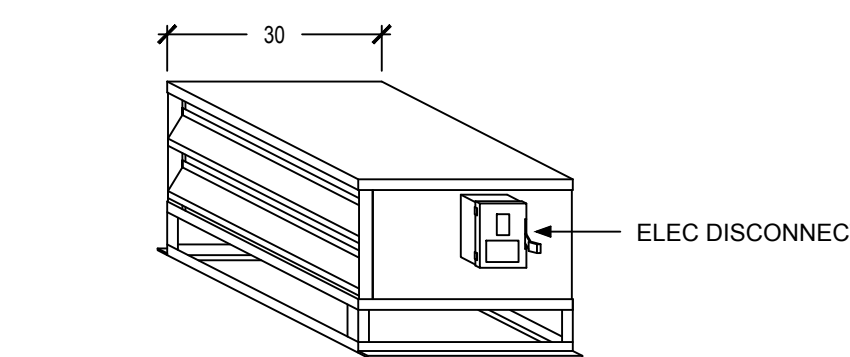
COMPRESSOR RACK(S) SHALL HAVE ELECTRICAL CHARACTERISTICS AS INDICATED ON DATA SHEET. ELECTRICIAN TO MAKE CONNECTIONS AS REQUIRED.

5. REFRIGERATION CONTRACTOR

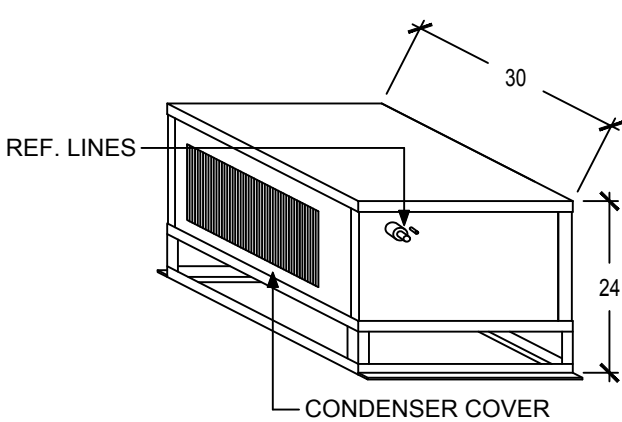
REFRIGERATION CONTRACTOR TO PROVIDE ALL REFRIGERANT PIPING. PIPING SHALL CONFORM TO ASTM STANDARD SPECIFICATIONS FOR COPPER. REFRIGERANT TUBING SERIAL DESIGNATION B-88. ALL PIPING SHALL BE TYPE 1". REFRIGERATION CONTRACTOR SHALL BE RESPONSIBLE FOR PROPERLY SIZING LIQUID, SUCTION AND RISER LINES FOR EACH SYSTEM. SUCTION LINES TO BE SIZED TO GIVE MAXIMUM PRESSURE DROP FROM EVAPORATOR TO FIXTURE OF 24" FOR HIGH AND MEDIUM TEMPERATURE SYSTEMS AND 14" DROP FOR LOW TEMPERATURE SYSTEMS. ALL REFRIGERANT LINES NOT RUN IN PVC OR EMT SHALL BE INSULATED WITH MINIMUM 1/2" THICK WALL ARMASTRONG ARMAFLEX INSULATION OR APPROVED EQUAL, MEETING SPECIFICATION AND LOCAL AND STATE CODES.

REFRIGERATION CONTRACTOR SHALL PROVIDE AND INSTALL ACR TYPE 1" HARD COPPER DRAIN LINES WITH P-TRAPS FROM EACH WALK-IN EVAPORATOR. P-TRAP SHALL BE PIPED AND MOUNTED OUTSIDE OF FIXTURE.

SYSTEM CONFIGURATION



SERVICE SIDE

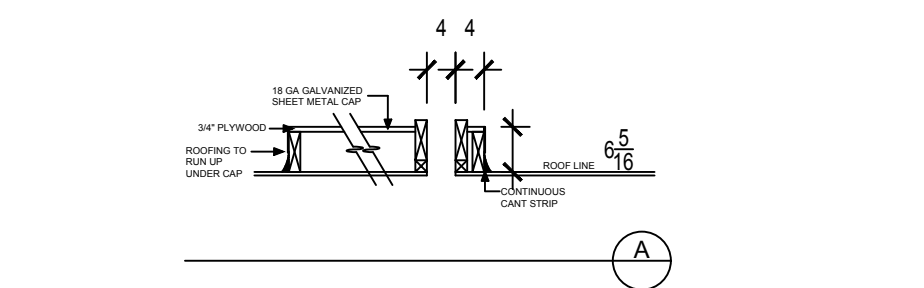
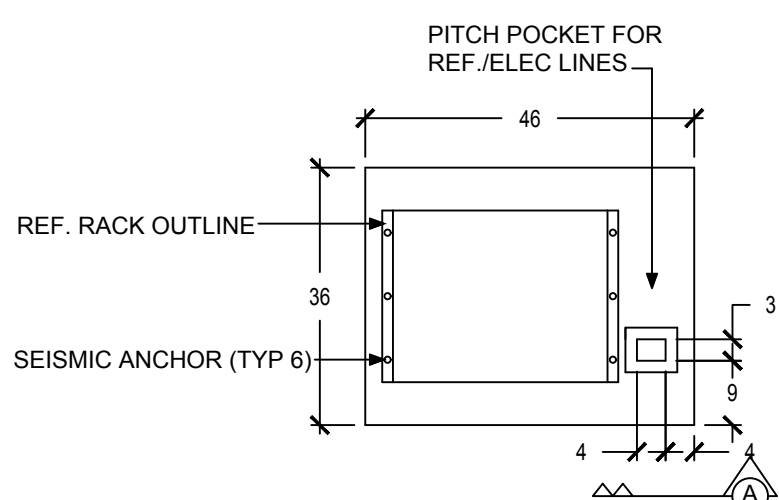


CONDENSER SIDE

NOTE: MAINTAIN 3 FEET CLEAR ON ALL SIDES OF REFRIGERATION SYSTEM

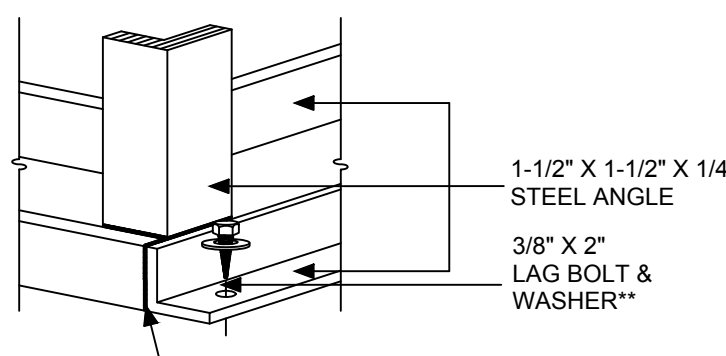


ROOF PAD DETAIL



TYPICAL ROOF PAD DETAIL. NOT FOR CONSTRUCTION; REFERENCE ONLY

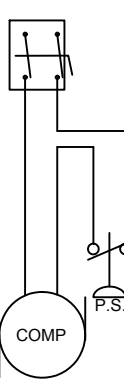
SEISMIC RESTRAINT



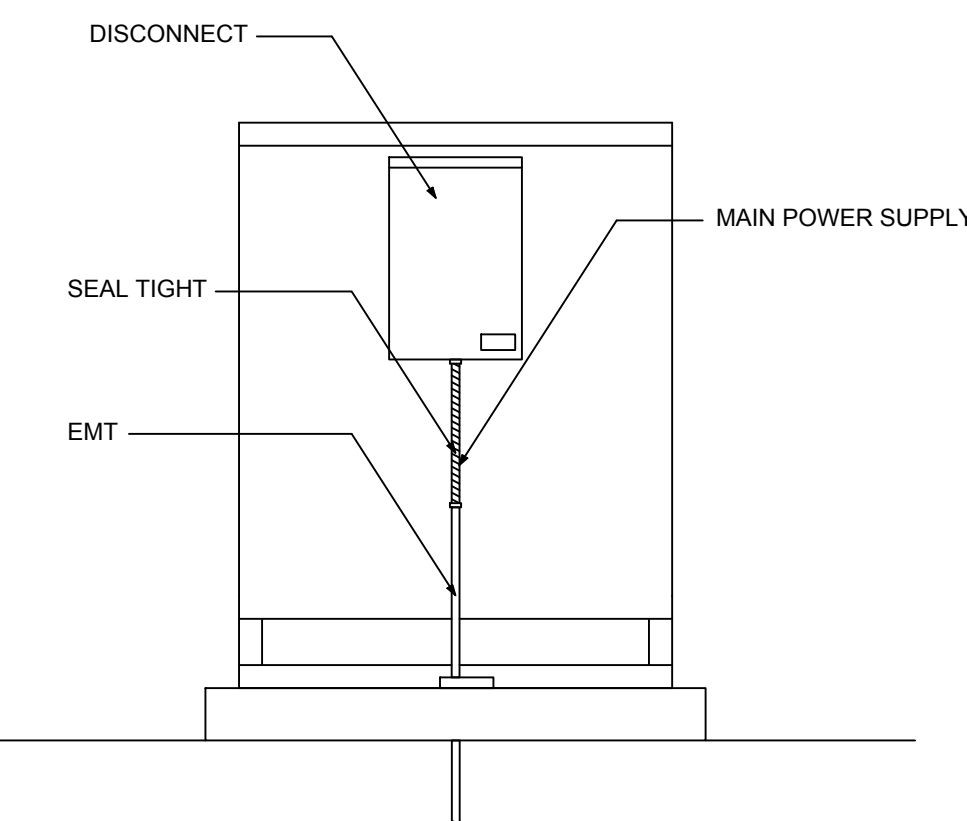
**FOR CONCRETE, SUBSTITUTE HLTI 3/8" X 2" DROP IN ANCHOR TYPICAL 3 PLACES AT EACH SIDE OF RACK

WIRING SCHEMATIC

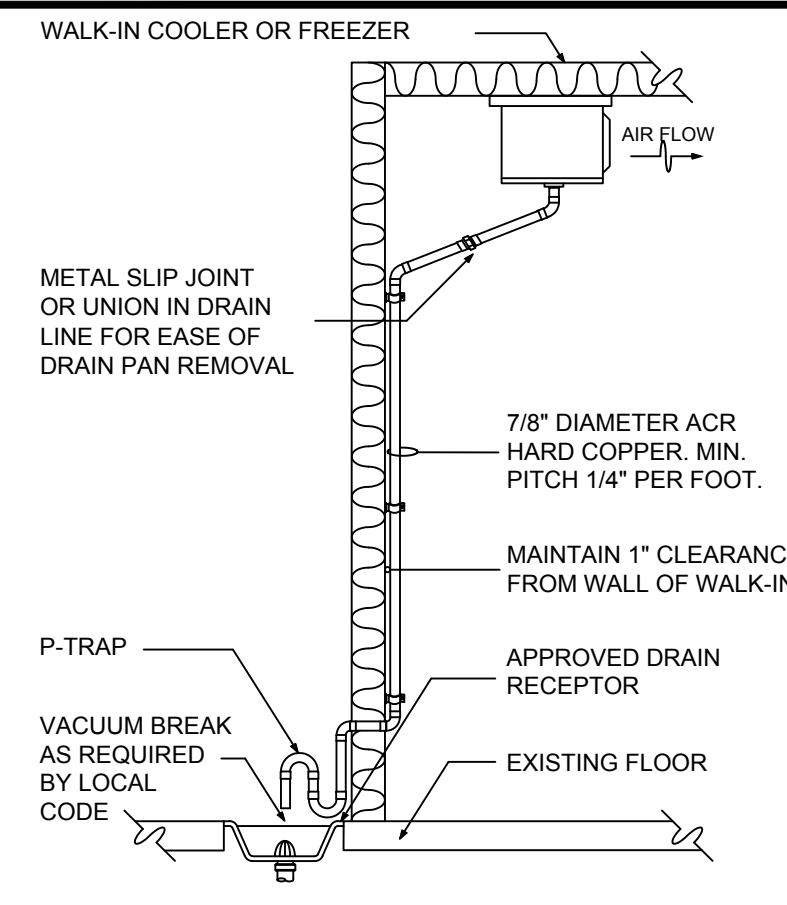
A



ELECTRICAL CONNECTIONS



WALK-IN DRAIN LINE DTL.



FREEZER EVAPORATORS:
ELEC. CONTRACTOR TO MAKE FINAL CONNECTION OF DRAIN LINE HEATER THAT IS SUPPLIED AND INSTALLED BY REFRIGERATION CONTRACTOR.

REVISIONS		
DATE:	BY:	NOTES:
DATE:	BY:	NOTES:
DATE:	BY:	NOTES:

FRIGID ENGINEERING SERVICES
19145 WILSHIRE BOULEVARD, SUITE 103
SANTA MONICA, CA 90401
PHONE 310-393-4465 FAX 310-393-2220
email: fgs@fgs.com



710 WILSHIRE
LOS ANGELES

DATE	02/20/13
DRAWN	T. COYLE
R-2	
SHEET 1 OF 1 SHEETS	

REVISION	DATE	DESCRIPTION
1	05/07/2013	Medium 02
2	09/04/2013	Medium 03
3	10/20/2013	Medium 04
4	05/27/2013	Medium 05



howard laks architects
1545 hollywood street
santa monica, ca 90401
voice 310-393-4465
fax 310-393-2220

CONSULTANTS

Kitchen Professionals
16742 Culwood Street, Suite 103
Huntington Beach, CA 92647
Phone: 714.841.0531 Fax: 714.441.9986

710 WILSHIRE BOULEVARD
MIXED-USE HOTEL PROJECT
SANTA MONICA - CALIFORNIA 90401
ROOF TOP BAR REFRIGERATION DATA

DRAWN	JL
CHECKED	CH
APPROVED	-
SCALE	N/A
SHEET	
K-2.5.2	
DATE	June 25, 2013
PROJECT NUMBER	HLA 0000000-00000