

SHEET NOTES:

- ① PROVIDE ELECTRICAL PANEL 208Y/120V-3P-4W. SEE PANEL SCHEDULE FOR ADDITIONAL INFORMATION.
- ② PROVIDE 2" CONDUIT ONLY FROM CHEMICAL CONTROL MONITOR TO THE FOLLOWING EQUIPMENT. STUB CONDUIT 12" ABOVE FINISHED FLOOR AT CHEMICAL CONTROL MONITOR.
- A. (1) 2" C.O. TO FILTER SYSTEM
B. (1) 2" C.O. TO CHEMICAL ROOM
C. (1) 2" C.O. TO CIRCULATION PUMP PIT
D. (1) 2" C.O. TO SURGE PIT (VERIFY EXACT LOCATION)
E. (1) 2" C.O. TO BACKWASH PIT (VERIFY EXACT LOCATION)
- ③ CHEMICAL FEED PUMPS RECEPTACLES, MOUNT RECEPTACLES 12" BELOW FEED PUMP RACK. COORDINATE EXACT LOCATION WITH POOL CONTRACTOR.
- ④ RUN CONDUIT AND WIRES THROUGH ENCLOSED RELAY TO CONTROL. SEE CONTROL DIAGRAM.
- ⑤ SINGLE PHASE SWITCH WITH HAND OFF AUTO SELECTOR SWITCH ALLEN BRADLEY BULLETIN 800 SERIES OR EQUAL.
- ⑥ PROVIDE 1" C-3 #8 CU THWN + 1 #10 CU GROUND.
- ⑦ RUN CONDUIT AND WIRES THROUGH CHEMICAL CONTROL RELAY TO INTERLOCK THE PRESSURE AMPLIFICATION PUMP WITH THE POOL CIRCULATION PUMP. SEE PUMP CONTROL DIAGRAM
- ⑧ REFER TO SINGLE DIAGRAM FOR ADDITIONAL INFORMATION
- ⑨ CONNECT TO HEATER IGNITION SYSTEM PER MANUFACTURER RECOMMENDATIONS.
- ⑩ NOT USED.
- ⑪ TO CIRCUIT BREAKER IN PANEL M8B PANEL AND BREAKER ARE PROVIDED BY BUILDING ELECTRICAL CONTRACTOR. SEE SINGLE LINE DIAGRAM FOR ADDITIONAL INFORMATION.
- ⑫ PROVIDE GUTTER AND RELAYS IN NEMA 3R ENCLOSURE SEE DETAIL FOR ADDITIONAL INFORMATION.
- ⑬ PROVIDE TELEPHONE/DATA OUTLET FOR CCM. PROVIDE 1" C WITH (4) CAT 6E WIRING TO NEAREST TELEPHONE CLOSET, FIELD VERIFY. MOUNT OUTLET AT 42" AFF.
- ⑭ PROVIDE RK1 TYPE FUSE. FUSE SIZE PER MANUFACTURER'S UL COMPLIANCE CHART.
- ⑮ PROVIDE 3/4" CO TO PANEL P8 FOR FUTURE HEATER.
- ⑯ PROVIDE 30A-3P FUSED DISCONNECT WITH 15A FUSE. FUSE TYPE TO BE RK1. PROVIDE AUXILIARY CONTACTS TO SIGNAL VFD OF DISCONNECTION.
- ⑰ PROVIDE PULL BOX 18" X 18" X 4" DEEP FOR FUTURE 50M CIRCULATION PUMP.
- ⑱ PROVIDE LC&D BLUE BOX WITH (16) RELAYS. MODEL GR1408L716-DCT MODEM+HL-SM.
- ⑲ EXPOSED CONDUIT IN CHEMICAL ROOMS TO BE PVC COATED RIGID CONDUIT.
- ⑳ PROVIDE FILTER SYSTEM TRANSFORMER, 120 VAC PRIMARY 24 VAC SECONDARY IN NEMA 3R ENCLOSURE WITH PRIMARY FUSE PROTECTION.
- ㉑ FILTER CONTROL PANEL.
- ㉒ 1" C WITH WIRING TO GUTTER AND RELAYS. SEE CONTROL DIAGRAM FOR ADDITIONAL INFORMATION.
- ㉓ FUTURE EQUIPMENT. PROVIDE CONDUIT ONLY.
- ㉔ PROVIDE NEMA 1, 80AS, 40AF DISCONNECT SWITCH.
- ㉕ PROVIDE NEMA 1, 30AS, 15AF DISCONNECT SWITCH.
- ㉖ CONNECT TO EQUIPMENT PER MANUFACTURERS RECOMMENDATIONS.

POOL EQUIPMENT

- ① CIRCULATION PUMP - PACO 10-4A-20867 200 GPM @80' HEAD 10HP 1200 RPM TEFC MOTOR 208/460VAC 3 PHASE WITH MANUFACTURES CAST IRON BASE.
- ② FILTER SYSTEM - (2) TRITON TR 140 C SAND FILTER WITH MULTIPOINT VALVE 7.08 SQ. FT. OF SAND EACH (14.12 SQ. FT. SAND TOTAL) #20 SILICA SAND AND MANUAL BACKWASH CONTROL. 1419 GPM PER SQ. FT. OF SAND. 3600 LBS.
- ③ HEATER SYSTEM - RAYPAC 407 HEATER WITH CUPPRO NICKEL HEAT EXCHANGER, 399,000 BTUH INPUT, 5" INTAKE AIR, 6" EXHAUST, 3/4" GAS CONNECTION, 2" PVC WATER CONNECTION.
- ④ CHEMICAL CONTROL MONITOR - BEC - SYS-6 CHEMICAL CONTROL MONITOR WITH CIRCULATION PUMP INTERLOCK AND GOLD TIP ORP SENSOR.
- ⑤ CO2 TANK - TAYLOR WARTON 800 LB CO2 CRYOGENIC STORAGE TANK LOCATED IN SERVICE DELIVERY AREA WITH REMOTE FILL BOX. (SEE ARCHITECTURAL FOR EXACT LOCATION)
- ⑥ FLOW METER - SIGNET FLOW SENSOR P-51530-0 SERIES ANALOG SELF POWERED FLOW SENSOR FOR 3" PIPE
- ⑦ SALT CHLORINE GENERATOR - COR-KING CHLOR - 10 LBS PER DAY CHLORINE PRODUCTION
- ⑧ BALANCE TANK - NEMATO 34" HORIZONTAL BALANCE TANK WITH MODULATIONS VALVE CONTRACTOR TO VERIFY PIPING ORIENTATION BEFORE ORDERING TANK FLANGE
- ⑨ PH-MTS CO2 FEED SYSTEM - EKO - 3 PHMTS CO2 GAS MASS TRANSFER UNIT

SPA EQUIPMENT

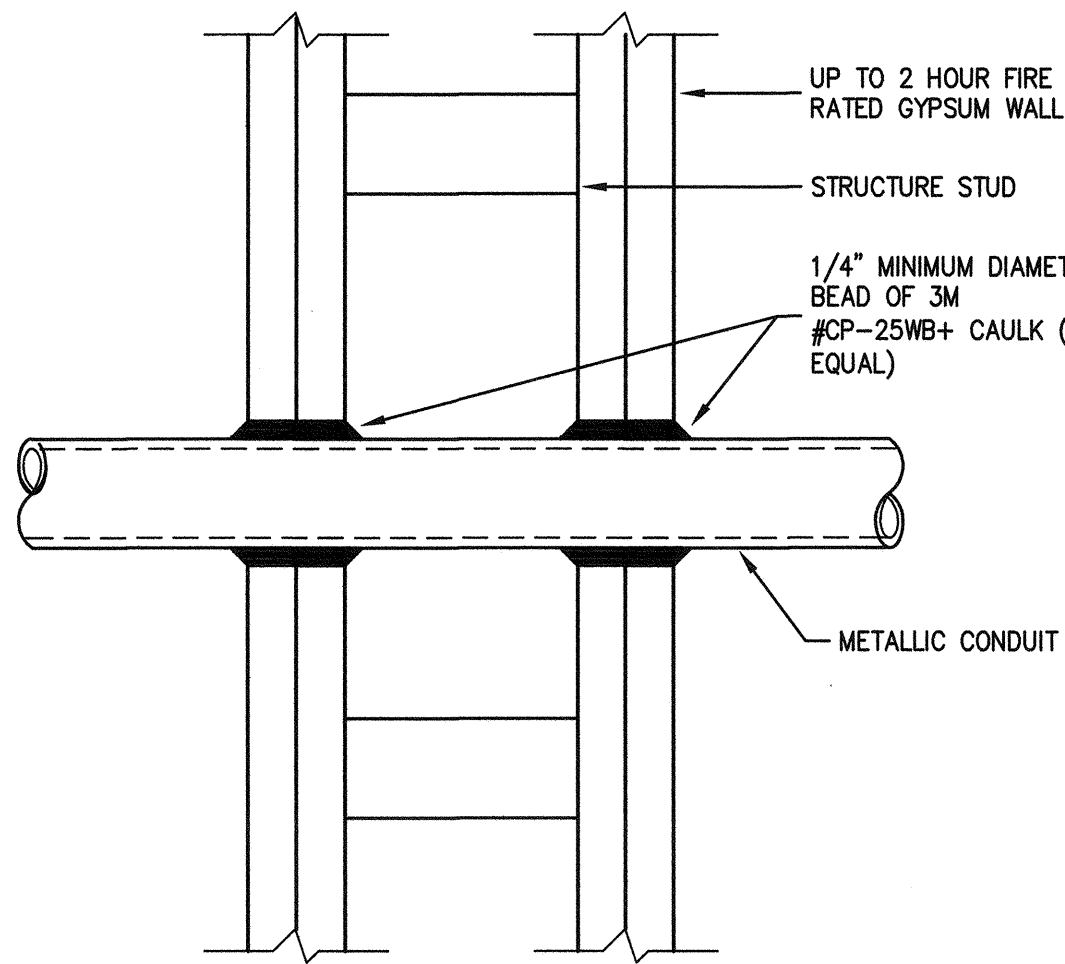
- ⑩ CIRCULATION PUMP - PENTAIR WISPER FLO WFK-6, 220/208-460V, VAC, 1.5 HP, 99 GPM @ 60' HEAD.
- ⑪ FILTER SYSTEM - PENTAIR TRITON TR-140C 7.08 SQ. FT. OF SAND, WITH MULTIPOINT VALVE MANIFOLD, MANUAL BACKWASH SYSTEM, WEIGHT: 1400 LBS.
- ⑫ HEATER SYSTEM - RAYPAC DIGITAL MODEL 207 HEATER WITH CUPPRO NICKEL HEAT EXCHANGER, 266,000 BTUH INPUT, 3/4" GAS CONNECTION, 2" PVC WATER CONNECTION.
- ⑬ CHEMICAL CONTROL MONITOR - BEC - SYS-6 CHEMICAL CONTROL MONITOR WITH ETHERNET CONNECTION AND CIRCULATION PUMP INTER LOCK AND GOLD TIP RED ORP PROBE
- ⑭ SALT CHLORINE GENERATOR - COR-KING CHLOR - 1.5 LBS PER DAY CHLORINE PRODUCTION
- ⑮ PH-MTS CO2 FEED SYSTEM - EKO - 3 PHMTS CO2 GAS MASS TRANSFER UNIT
- ⑯ FLOW METER - SIGNET FLOW METER P-51530-0 SERIES ANALOG SELF POWERED FLOW METER FOR 3" PIPE
- ⑰ BOOST PUMP - PACO 10-30127 LC 400 GPM @ 80' HEAD 1200 RPM 10 HP TEFC MOTOR 208/460 VAC. PROVIDE CAST IRON BASE
- ⑱ BOOST PUMP VFD - PENTAIR ACCUDRIVE VFD-10 HP MOTOR

EQUIPMENT ROOM SCHEDULE

SCALE: N.T.S.

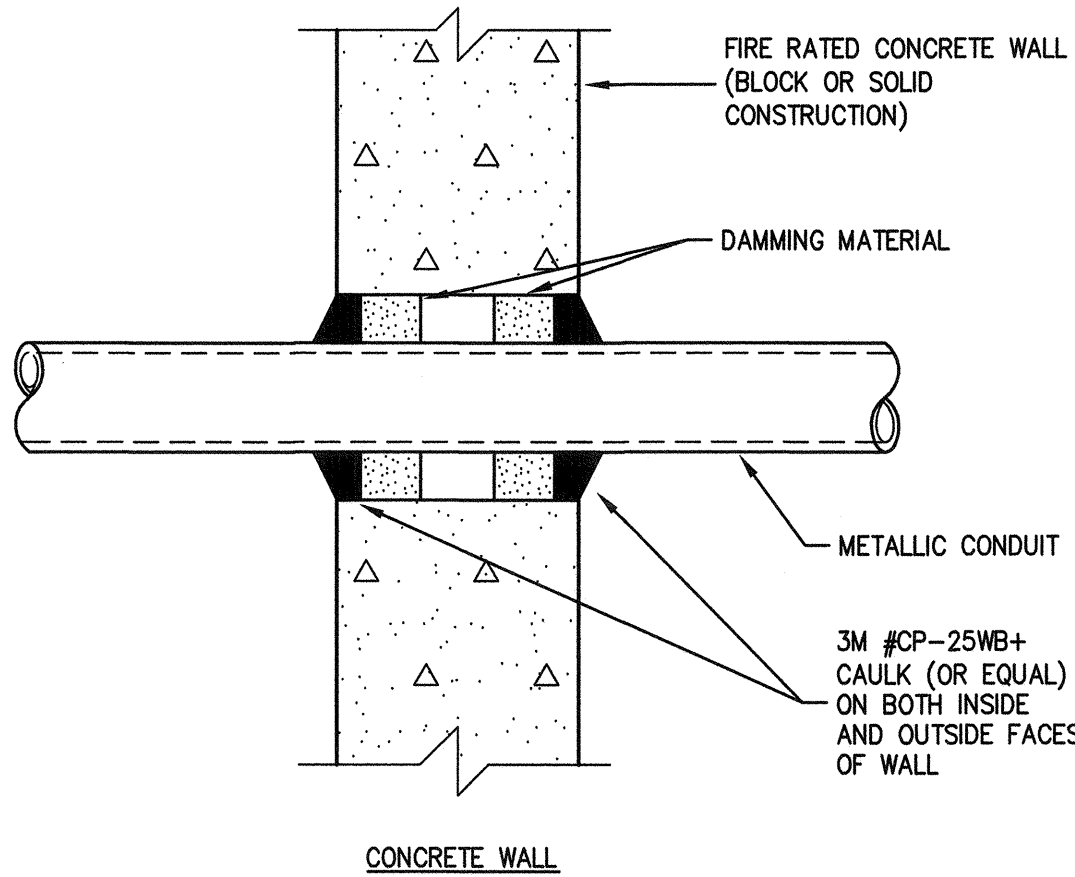
11

THE FOLLOWING INFORMATION IS FOR REFERENCE ONLY. ALL PENETRATIONS IN FIRE-RATED ASSEMBLIES SHALL BE PROTECTED AS REQUIRED BY C.B.C., CHAPTER 7. THE UL FIRESTOP SYSTEM SHALL BE INSTALLED AND USED EXACTLY AS STATED IN THE UL FIRE RESISTANCE DIRECTORY.



NOTES:

1. THE CAULK SHALL TO BE FORCED INTO THE ANNULAR SPACE TO THE MAXIMUM EXTENT POSSIBLE FLUSH WITH THE EXTERIOR OF THE PENETRATED SURFACE.
2. FINISH CAULKING WITH A 1/4" MINIMUM BEAD OF CP-25WB+ CAULK APPLIED TO THE PERIMETER OF THE CONDUIT/PIPE AT ITS EGRESS FROM THE WALL.
3. THE MAXIMUM ANNULAR SPACE IS NOT TO EXCEED 3/16".
4. INSTALL 3M FIRESTOP ON BOTH FACES OF THE WALL.
5. INSTRUCTIONS ARE BASED ON PRODUCT PERFORMANCE PER ASTM E814 (ANSI/UL 1479) FIRE TEST AND UL THROUGH-PENETRATION FIRESTOP SYSTEM #ML1001.
6. 3M MODEL #CP-25WB+ CAULK, C.S.F.M. LISTING #4485-0941:103.



NOTES:

- A. THE FIRESTOP SYSTEM MUST BE INSTALLED ON BOTH SIDES OF THE WALL WHEN THE ANNULAR SPACE IS GREATER THAN 1".
- B. WHEN MAXIMUM ANNULAR SPACE IS 1" OR LESS, A 1/2" MINIMUM DEPTH 3M FIRE BARRIER CP-20WB+ CAULK IS REQUIRED. CP-20WB+ CAULK MAY BE APPLIED TO ONE SIDE OF THE WALL ONLY WHEN MAXIMUM ANNULAR SPACE IS LESS THAN 1".
- C. WHEN THE MAXIMUM ANNULAR SPACE IS GREATER THAN 1", A 1" MINIMUM DEPTH OF CP-25WB+ CAULK IS REQUIRED.
- D. THE MAXIMUM ANNULAR SPACE TO BE FILLED WITHOUT A COVER PLATE IS 2 1/2".
- E. POINT CONTACT WITH THE PENETRATING ITEM AND THE THROUGH OPENING IS PERMISSIBLE.
- F. THE CP-25WB+ CAULK FIRE RATING IS BASED ON THE WET INSTALLED DEPTH AND SHRINKAGE MAY BE EXPECTED AFTER INSTALLATION.
- G. THESE RECOMMENDATIONS ARE BASED ON PRODUCT PERFORMANCE PER ASTM E814 (ANSI/UL 1479) FIRE TEST AND UL THROUGH-PENETRATION FIRESTOP SYSTEM #ML1001.
- H. 3M MODEL #CP-25WB+ CAULK, C.S.F.M. LISTING #4485-0941:103.

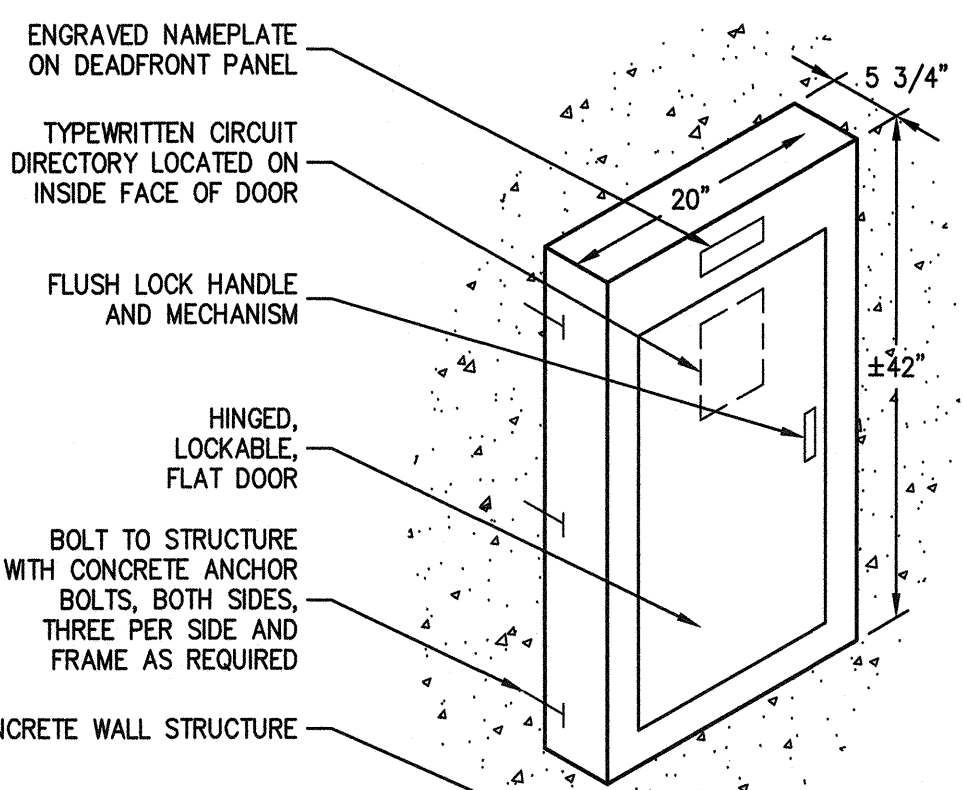
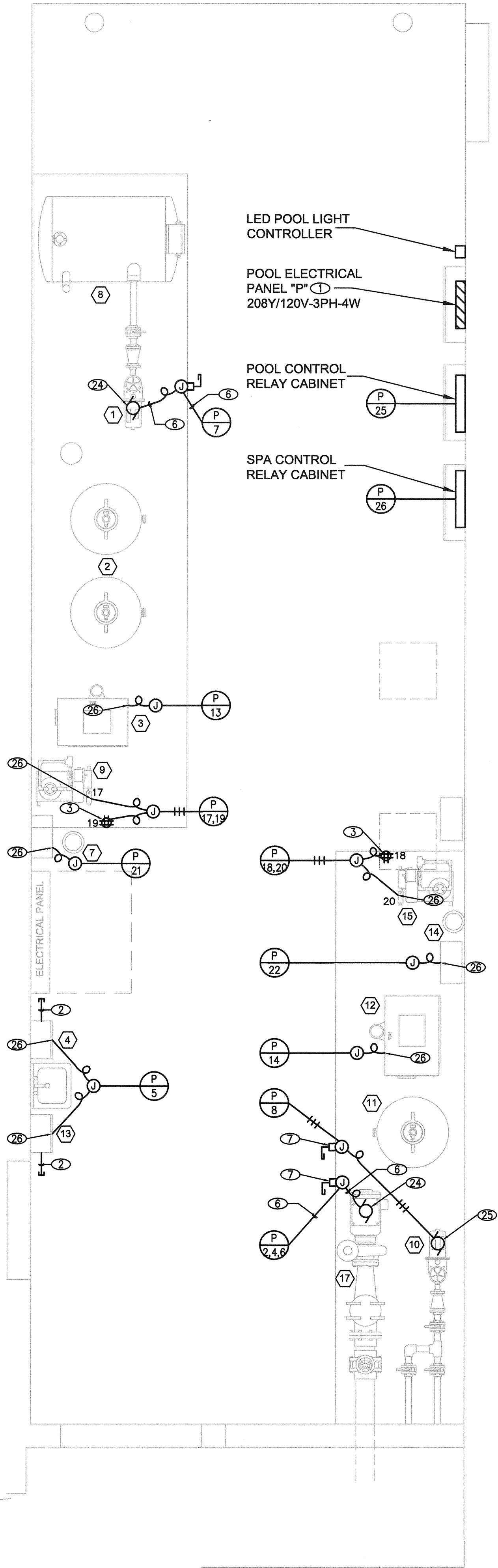
FIRESTOP REQUIREMENTS FOR CONDUIT PENETRATION

FOR METALLIC CONDUITS THROUGH FIRE RATED WALLS

9

POOL EQUIPMENT ROOM ELECTRICAL PLAN

SCALE: 3/8"=1'-0"



NOTE:
PROVIDE ENCLOSURE TO MATCH WALL RATING IF PANEL OCCURS IN FIRE RATED WALL. CONTRACTOR SHALL FIELD VERIFY ALL LOCATIONS.

SURFACE PANEL MOUNTING
MOUNTED ON A CONCRETE WALL

SCALE: N.T.S.

18

REVISIONS	DATE	DESCRIPTION
BY	09/25/13	Rev Check Submit
	07/09/13	Rev Check Re-Submit Date 01
	07/09/13	Rev Check Re-Submit Date 02
	07/07/14	Rev Check Re-Submit Date 03

hla
howard laks architects
5546 Wilshire Blvd
Suite 200
Beverly Hills, CA 90210
Tel: 310.274.2224 Fax: 310.274.2280
www.hla.com

CONSULTANTS

Rowley International Inc
AQUATIC Design, Engineering & Consulting
2200 Wilshire Blvd Suite 200
Santa Monica, CA 90401
Tel: 310.374.2224 Fax: 310.374.2280
www.rowleyintl.com

710 WILSHIRE BOULEVARD
MIXED-USE HOTEL PROJECT
SANTA MONICA - CALIFORNIA 90401

EQUIPMENT ROOM PLAN / HEATER & SCHEDULE



DRAWN: LVA
CHECKED: VWW
APPROVED: VWW
SCALE: AS NOTED
SHEET

SP-6.2
DATE: OCTOBER 17, 2014
PROJECT NUMBER: HLA 0000000-00000

1